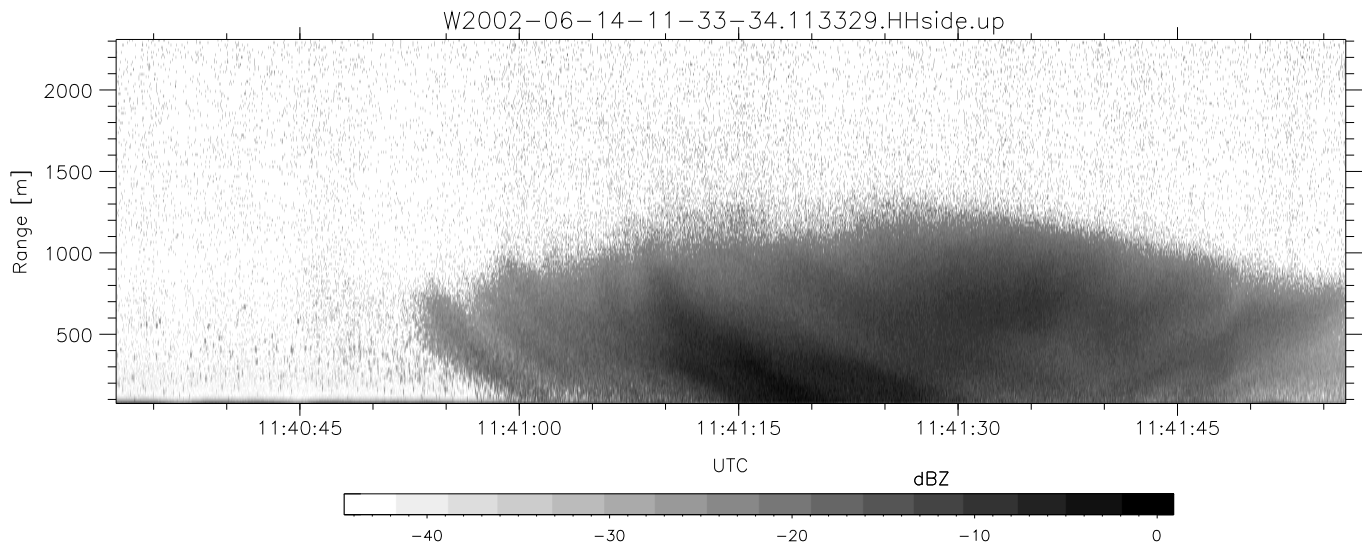
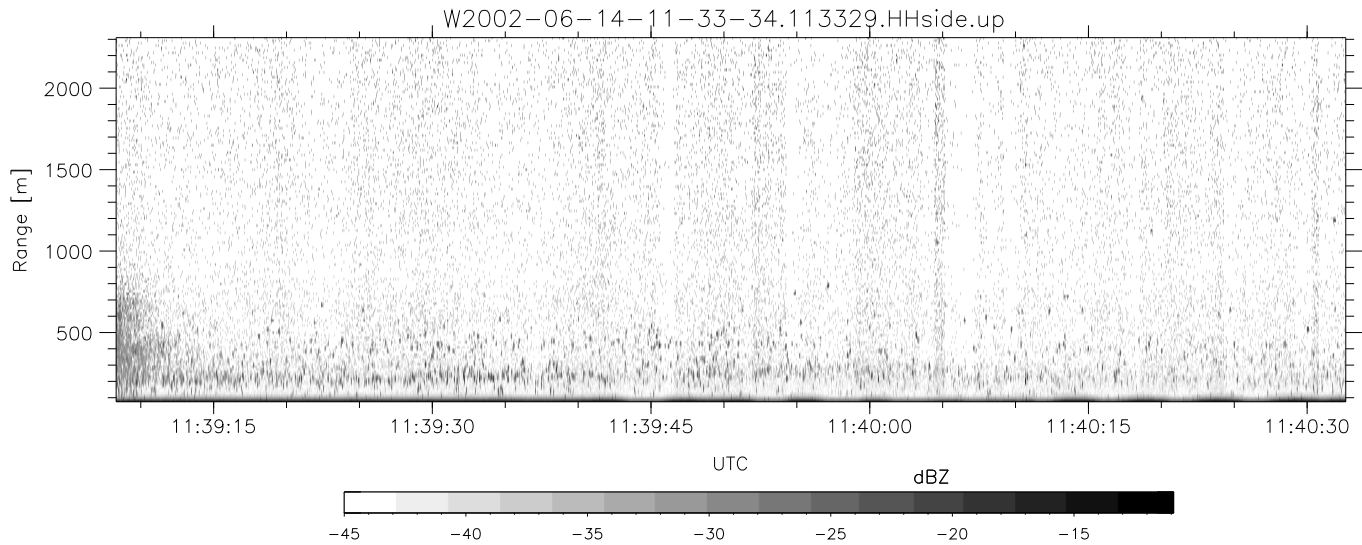
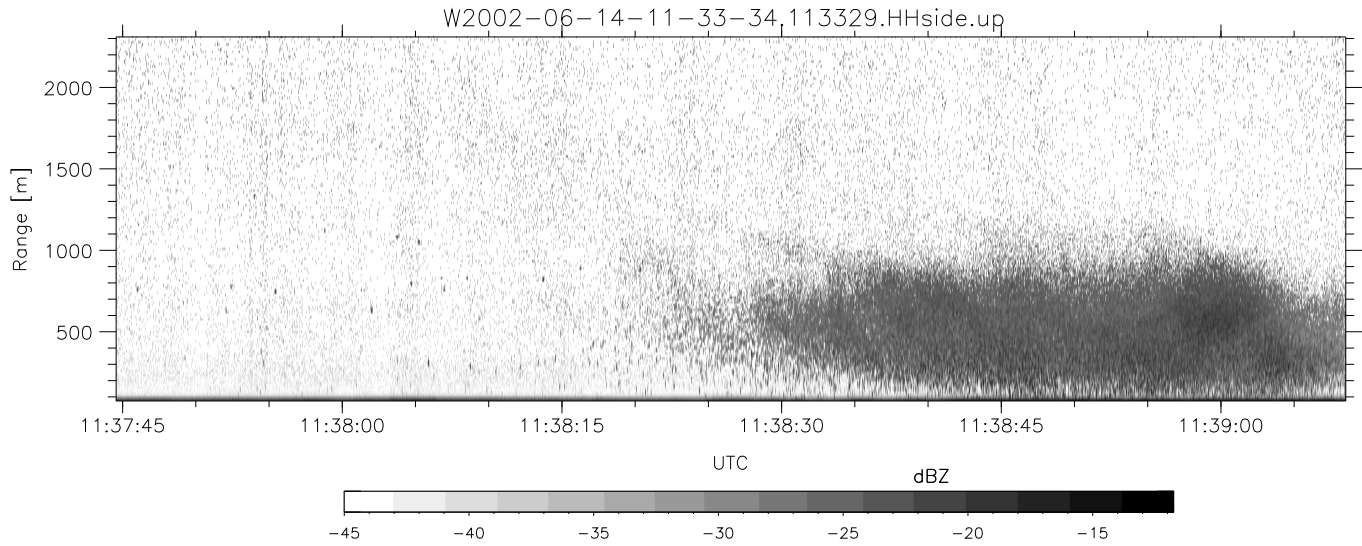


IHOP 2002 (dual-antenna config, modes 1,3,4,7) Data (cal: 49.0,50.0)

W2002-06-14-11-33-34 - SPPMAG
 IRIG:1,UTC: 11:33:29.94 to 12:39:31.65, Dur: 3962s
 TimeLngth: 3961.70s, TimeInt: 24ms (40.9pps)
 TimeCor=-13.0s, DSPDif(mn,min,mx):27,20,278
 PPS(min,max,std): 20,42,2.77
 Prof: 511 to 162678, NumProf(t/r): 162167/30122
 ProcTime/Recs: 11:33:29-11:45:46/0-30121
 MxACQtime: 17ms; DRate: 98.0KB/s; Flags: 0, 0, 0
 Pulse: 275ns, IFfilt: 5.0MHz; ppPol: HH
 TxPol: H, PRF: 20 kHz
 Range: Delay 75m, Spacing 15m, Gates 150
 Ave. Pulses: 348, Rng/Prof Aspect@90m/s: 6.8

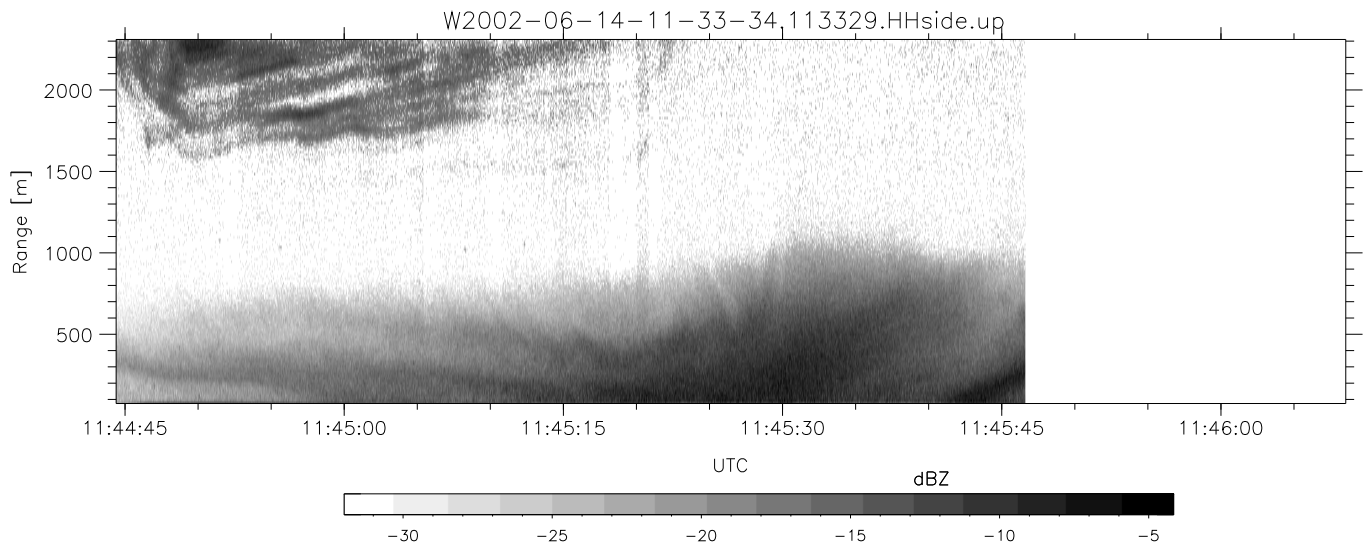
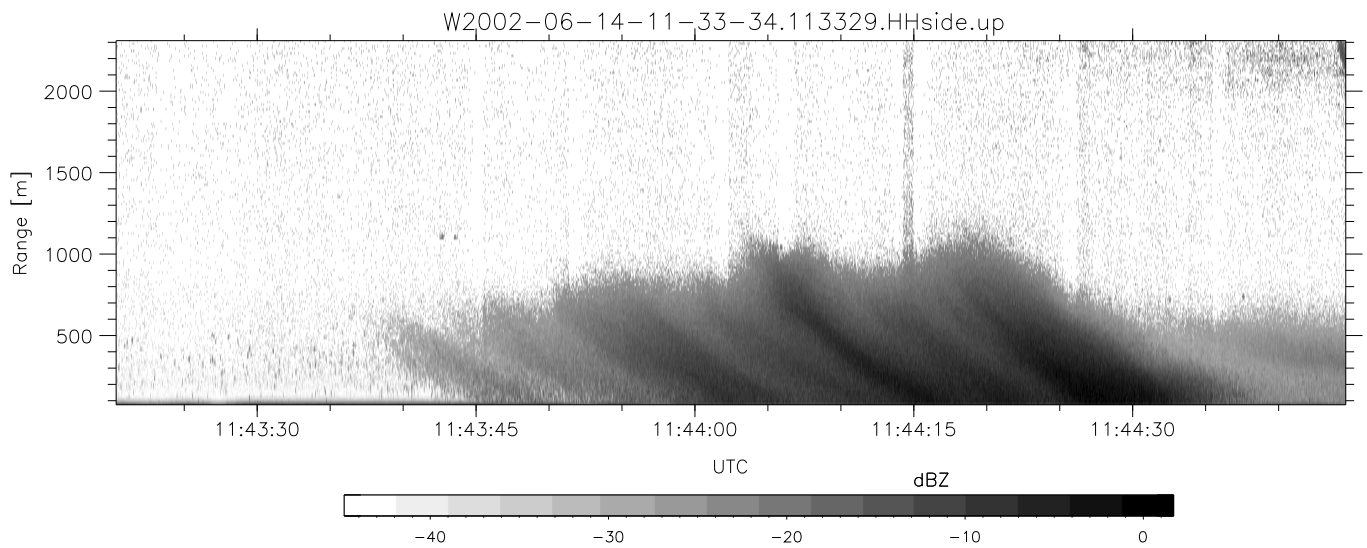
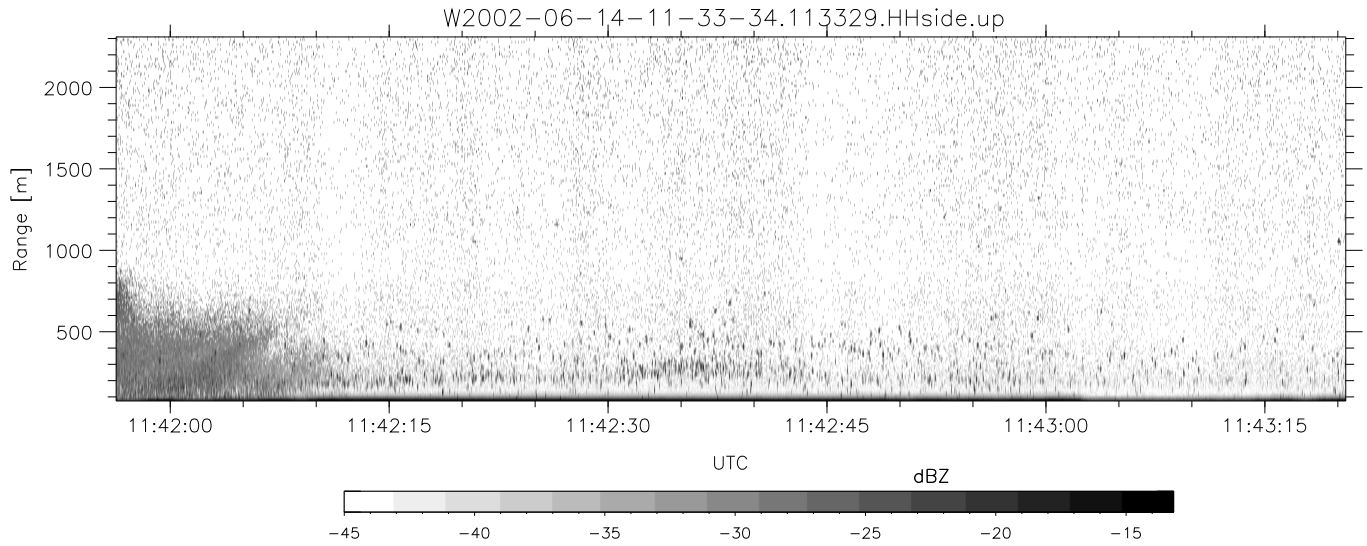
	Min	Max	Mean	Std	Varc%
hhN(dB)	-65.89	-63.81	-64.92	-77.53	5.5
vvN(dB)	-66.33	-64.17	-65.29	-77.39	6.2
hhL(dB)	-14.29	-2.43	-7.48	-10.36	51.5
vhL(dB)	-23.58	-1.96	-7.06	-8.79	67.2
ppN(m/s)	-15.80	15.80	0.53	9.00	
ppT(m/s)	-0.05	0.05	-0.00	0.01	
vh/hh(dB)	-NaN	3.22	-17.94	-13.11	304.
hnjmp(dB)	-1.06	1.33	0.15	-11.60	6.7
vnjmp(dB)	-1.37	1.42	0.11	-11.57	6.8



IHOP 2002 (dual-antenna config, modes 1,3,4,7) Data (cal: 49.0,50.0)

W2002-06-14-11-33-34 - SPPMAG
 IRIG:1,UTC: 11:33:29.94 to 12:39:31.65, Dur: 3962s
 TimeLngth: 3961.70s, TimeInt: 24ms (40.9pps)
 TimeCor=-13.0s, DSPDif(mn,min,mx):27,20,278
 PPS(min,max,std): 20,42,2.77
 Prof: 511 to 162678, NumProf(t/r): 162167/30122
 ProcTime/Recs: 11:33:29-11:45:46/0-30121
 MxACQtime: 17ms; DRate: 98.0KB/s; Flags: 0, 0, 0
 Pulse: 275ns, IFfilt: 5.0MHz; ppPol: HH
 TxPol: H, PRF: 20 kHz
 Range: Delay 75m, Spacing 15m, Gates 150
 Ave. Pulses: 348, Rng/Prof Aspect@90m/s: 6.8

	Min	Max	Mean	Std	Varc%
hhN(dB)	-65.89	-63.81	-64.92	-77.53	5.5
vvN(dB)	-66.33	-64.17	-65.29	-77.39	6.2
hhL(dB)	-14.29	-2.43	-7.48	-10.36	51.5
vhL(dB)	-23.58	-1.96	-7.06	-8.79	67.2
ppN(m/s)	-15.80	15.80	0.53	9.00	
ppT(m/s)	-0.05	0.05	-0.00	0.01	
vh/hh(dB)	-NaN	3.22	-17.94	-13.11	304.
hnjmp(dB)	-1.06	1.33	0.15	-11.60	6.7
vnjmp(dB)	-1.37	1.42	0.11	-11.57	6.8



IHOP 2002 (dual-antenna config, modes 1,3,4,7) Data (cal: 49.0,50.0)

W2002-06-14-11-33-34 - SPPMAG
 IRIG:1,UTC: 11:33:29.94 to 12:39:31.65, Dur: 3962s
 TimeLngth: 3961.70s, TimeInt: 24ms (40.9pps)
 TimeCor=-13.0s, DSPDif(mn,min,mx):27,20,278
 PPS(min,max,std): 20,42,2.77
 Prof: 511 to 162678, NumProf(t/r): 162167/30122
 ProcTime/Recs: 11:33:29-11:45:46/0-30121
 MxACQtime: 17ms; DRate: 98.0KB/s; Flags: 0, 0, 0
 Pulse: 275ns, IFfilt: 5.0MHz; ppPol: HH
 TxPol: H, PRF: 20 kHz
 Range: Delay 75m, Spacing 15m, Gates 150
 Ave. Pulses: 348, Rng/Prof Aspect@90m/s: 6.8

	Min	Max	Mean	Std	Varc%
hhN (dB)	-65.89	-63.81	-64.92	-77.53	5.5
vvN (dB)	-66.33	-64.17	-65.29	-77.39	6.2
hhL (dB)	-14.29	-2.43	-7.48	-10.36	51.5
vhL (dB)	-23.58	-1.96	-7.06	-8.79	67.2
ppN (m/s)	-15.80	15.80	0.53	9.00	
ppT (m/s)	-0.05	0.05	-0.00	0.01	
vh/hh (dB)	-NaN	3.22	-17.94	-13.11	304.
hnjmp (dB)	-1.06	1.33	0.15	-11.60	6.7
vnjmp (dB)	-1.37	1.42	0.11	-11.57	6.8