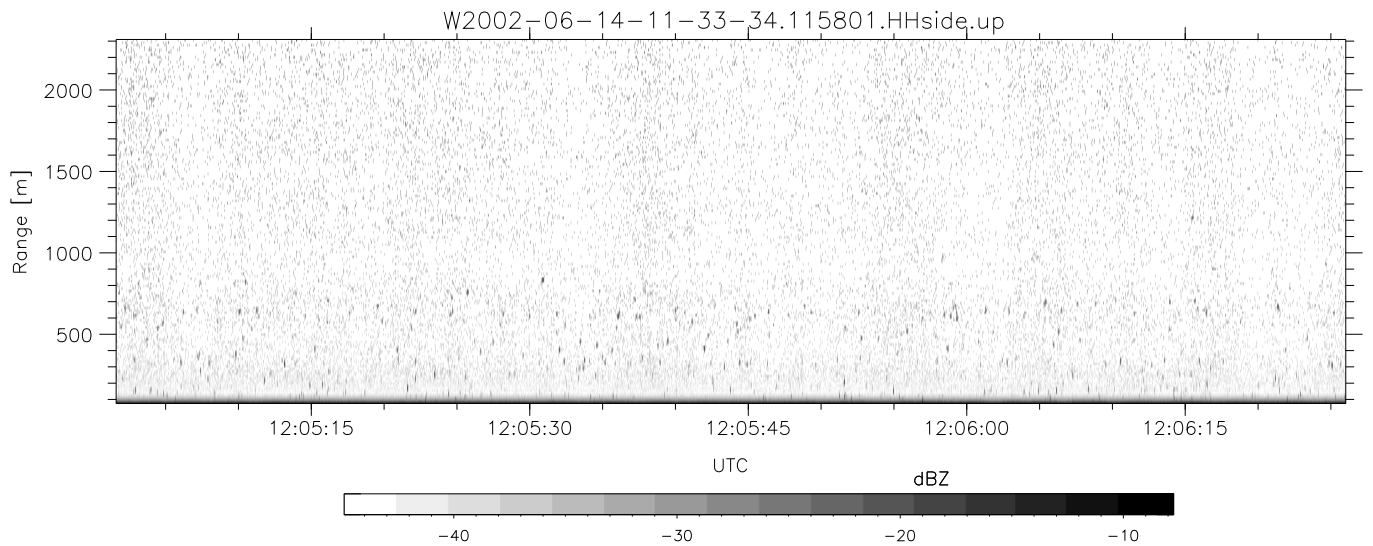
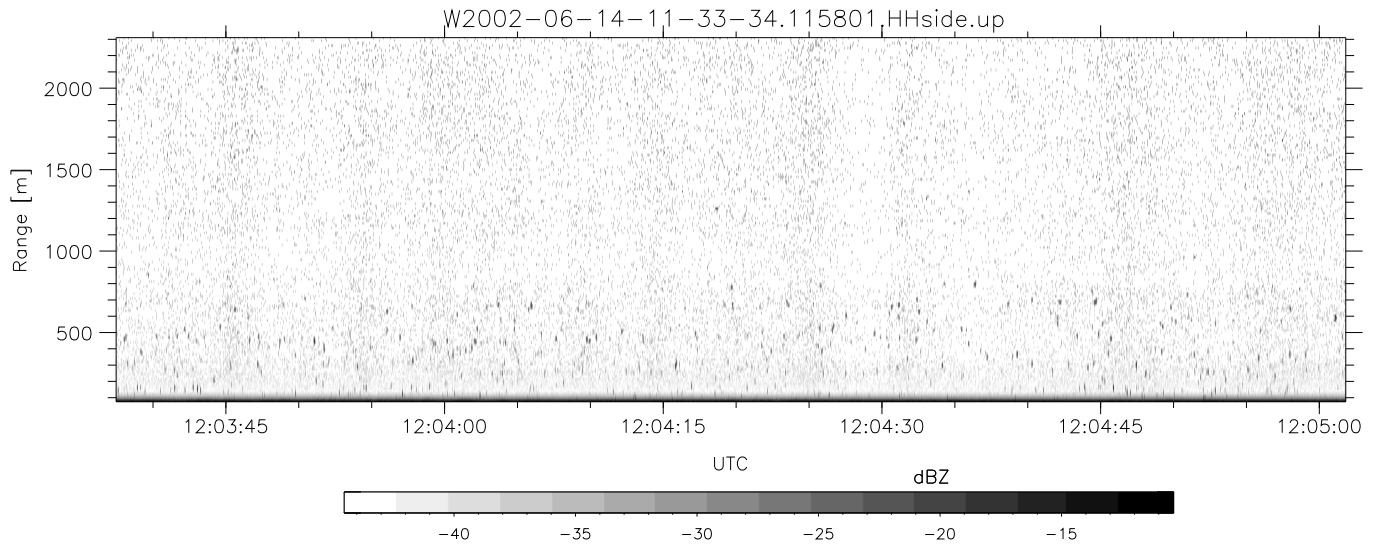
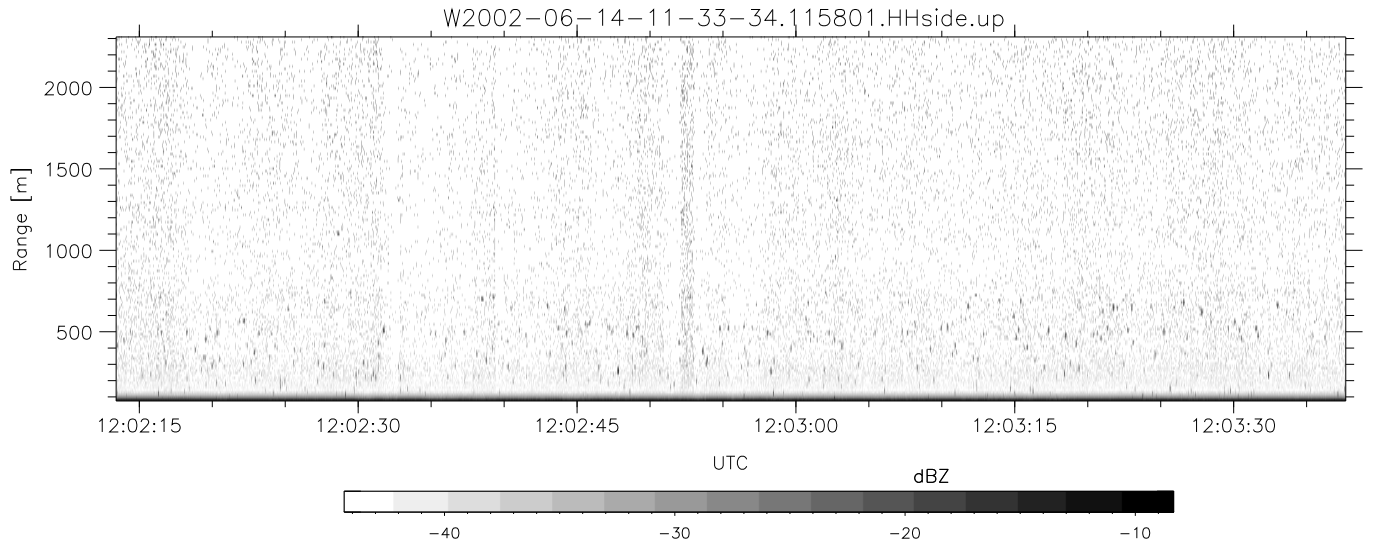


IHOP 2002 (dual-antenna config, modes 1,3,4,7) Data (cal: 49.0,50.0)

W2002-06-14-11-33-34 - SPPMAG
 IRIG:1,UTC: 11:33:29.94 to 12:39:31.65, Dur: 3962s
 TimeLngth: 3961.70s, TimeInt: 24ms (40.9pps)
 TimeCor=-13.0s, DSPDif(mn,min,mx):28,20,311
 PPS(min,max,std): 30,42,2.50
 Prof: 511 to 162678, NumProf(t/r): 162167/30122
 ProcTime/Recs: 11:58:01-12:10:16/60244-90365
 MxACQtime: 17ms; DRate: 98.0KB/s; Flags: 0, 0, 0
 Pulse: 275ns, IFfilt: 5.0MHz; ppPol: HH
 TxPol: H, PRF: 20 kHz
 Range: Delay 75m, Spacing 15m, Gates 150
 Ave. Pulses: 348, Rng/Prof Aspect@90m/s: 6.8

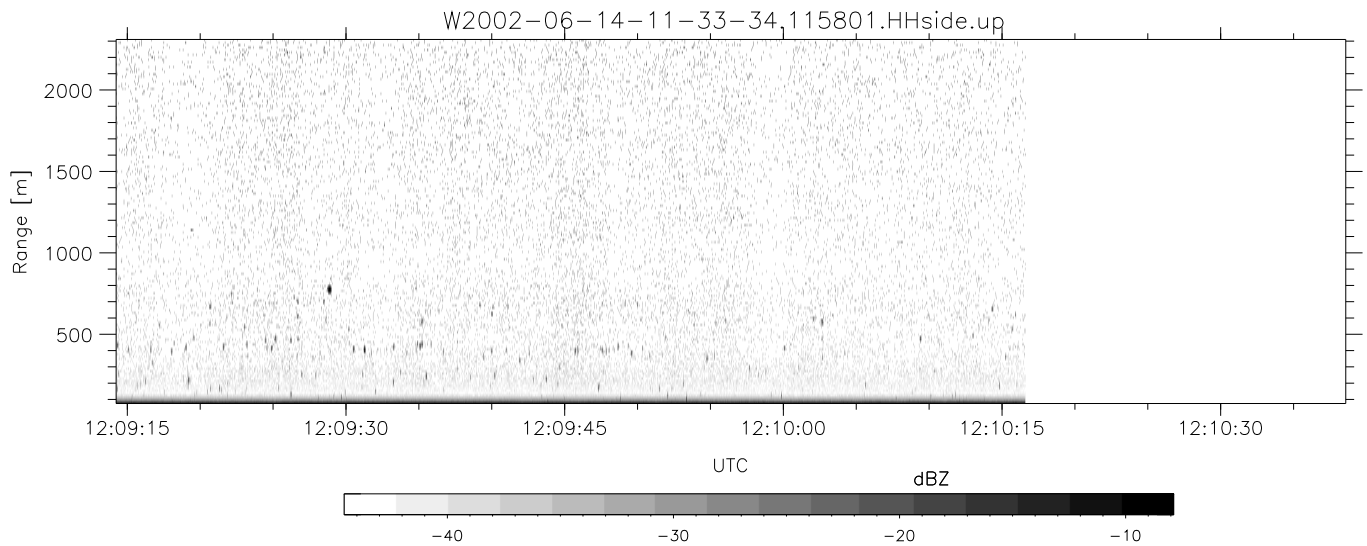
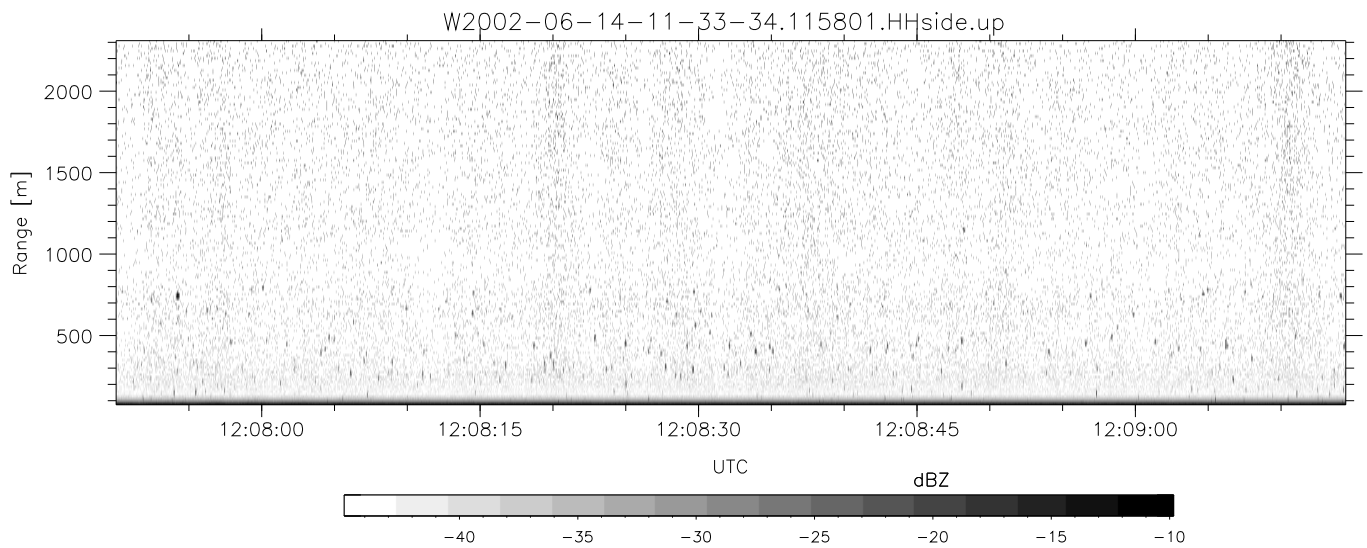
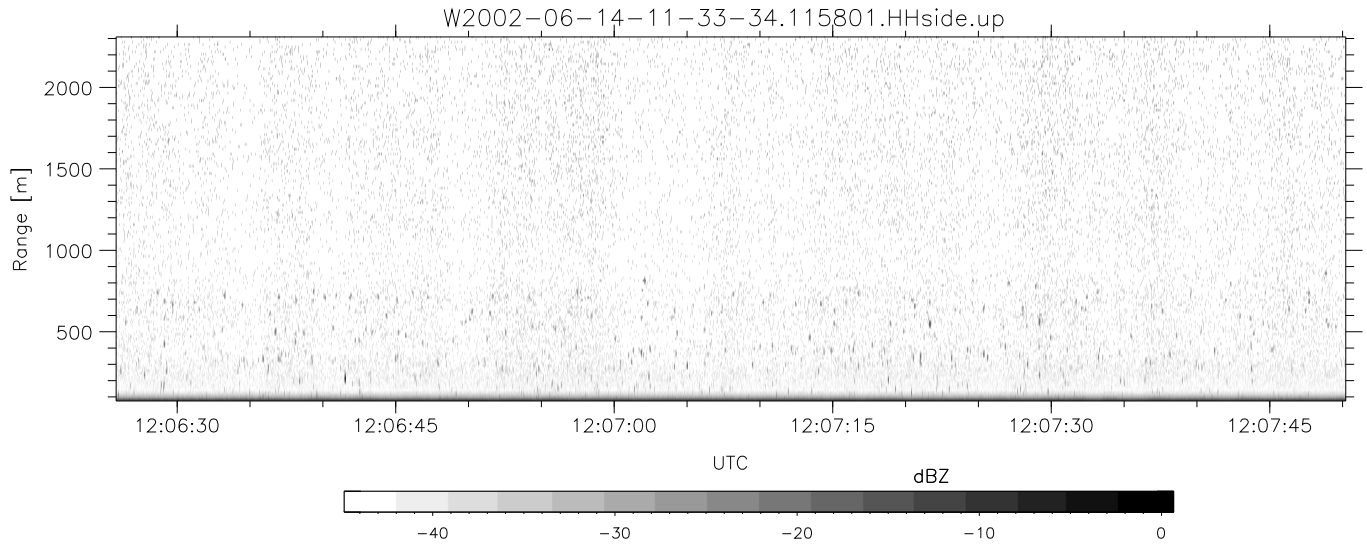
	Min	Max	Mean	Std	Varc%
hhN(dB)	-65.94	-64.15	-65.10	-77.96	5.2
vvN(dB)	-66.21	-64.20	-65.36	-78.09	5.3
hhL(dB)	-13.62	-2.03	-4.39	-11.00	21.8
vhL(dB)	-15.02	-1.47	-3.76	-10.31	22.1
ppN(m/s)	-15.80	15.80	0.09	8.99	
ppT(m/s)	-0.03	0.04	-0.00	0.01	
vh/hh(dB)	-39.90	-14.46	-20.12	-18.83	134.
hnjmp(dB)	-1.00	1.66	0.16	-11.58	6.7
vnjmp(dB)	-0.90	1.18	0.12	-11.54	6.8



IHOP 2002 (dual-antenna config, modes 1,3,4,7) Data (cal: 49.0,50.0)

W2002-06-14-11-33-34 - SPPMAG
 IRIG:1,UTC: 11:33:29.94 to 12:39:31.65, Dur: 3962s
 TimeLngth: 3961.70s, TimeInt: 24ms (40.9pps)
 TimeCor=-13.0s, DSPDif(mn,min,mx):28,20,311
 PPS(min,max,std): 30,42,2.50
 Prof: 511 to 162678, NumProf(t/r): 162167/30122
 ProcTime/Recs: 11:58:01-12:10:16/60244-90365
 MxACQtime: 17ms; DRate: 98.0KB/s; Flags: 0, 0, 0
 Pulse: 275ns, IFfilt: 5.0MHz; ppPol: HH
 TxPol: H, PRF: 20 kHz
 Range: Delay 75m, Spacing 15m, Gates 150
 Ave. Pulses: 348, Rng/Prof Aspect@90m/s: 6.8

	Min	Max	Mean	Std	Varc%
hhN (dB)	-65.94	-64.15	-65.10	-77.96	5.2
vvN (dB)	-66.21	-64.20	-65.36	-78.09	5.3
hhL (dB)	-13.62	-2.03	-4.39	-11.00	21.8
vhL (dB)	-15.02	-1.47	-3.76	-10.31	22.1
ppN (m/s)	-15.80	15.80	0.09	8.99	
ppT (m/s)	-0.03	0.04	-0.00	0.01	
vh/hh (dB)	-39.90	-14.46	-20.12	-18.83	134.
hnjmp (dB)	-1.00	1.66	0.16	-11.58	6.7
vnjmp (dB)	-0.90	1.18	0.12	-11.54	6.8



IHOP 2002 (dual-antenna config, modes 1,3,4,7) Data (cal: 49.0,50.0)

W2002-06-14-11-33-34 - SPPMAG
 IRIG:1,UTC: 11:33:29.94 to 12:39:31.65, Dur: 3962s
 TimeLngth: 3961.70s, TimeInt: 24ms (40.9pps)
 TimeCor=-13.0s, DSPDif(mn,min,mx):28,20,311
 PPS(min,max,std): 30,42,2.50
 Prof: 511 to 162678, NumProf(t/r): 162167/30122
 ProcTime/Recs: 11:58:01-12:10:16/60244-90365
 MxACQtime: 17ms; DRate: 98.0KB/s; Flags: 0, 0, 0
 Pulse: 275ns, IFfilt: 5.0MHz; ppPol: HH
 TxPol: H, PRF: 20 kHz
 Range: Delay 75m, Spacing 15m, Gates 150
 Ave. Pulses: 348, Rng/Prof Aspect@90m/s: 6.8

	Min	Max	Mean	Std	Varc%
hhN(dB)	-65.94	-64.15	-65.10	-77.96	5.2
vvN(dB)	-66.21	-64.20	-65.36	-78.09	5.3
hhL(dB)	-13.62	-2.03	-4.39	-11.00	21.8
vhL(dB)	-15.02	-1.47	-3.76	-10.31	22.1
ppN(m/s)	-15.80	15.80	0.09	8.99	
ppT(m/s)	-0.03	0.04	-0.00	0.01	
vh/hh(dB)	-39.90	-14.46	-20.12	-18.83	134.
hnjmp(dB)	-1.00	1.66	0.16	-11.58	6.7
vnjmp(dB)	-0.90	1.18	0.12	-11.54	6.8