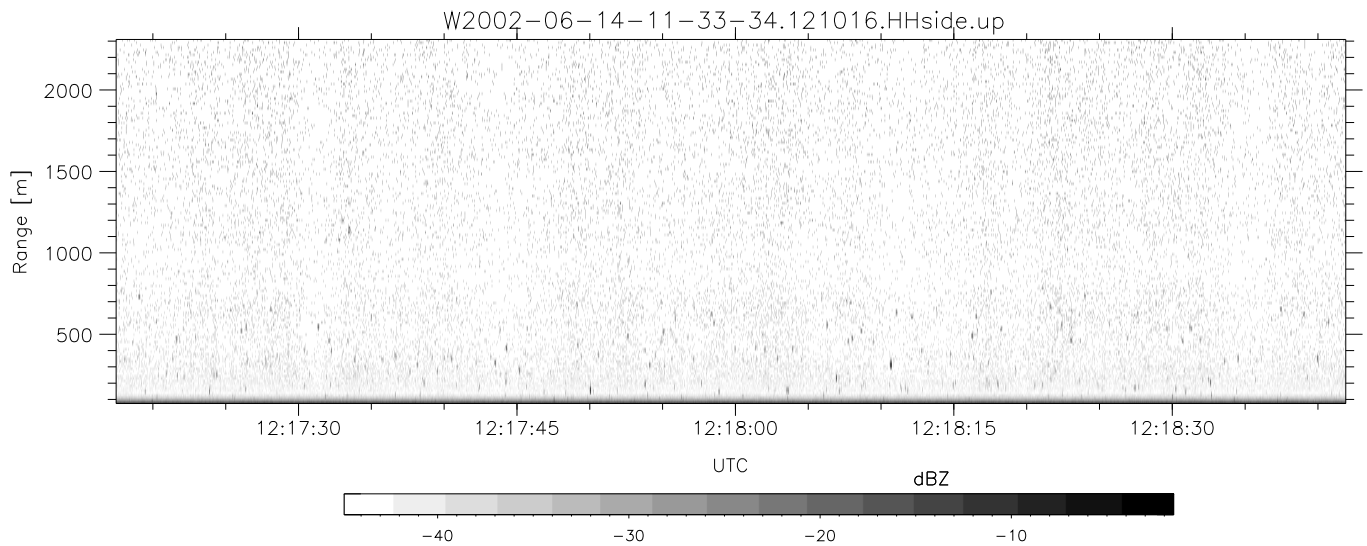
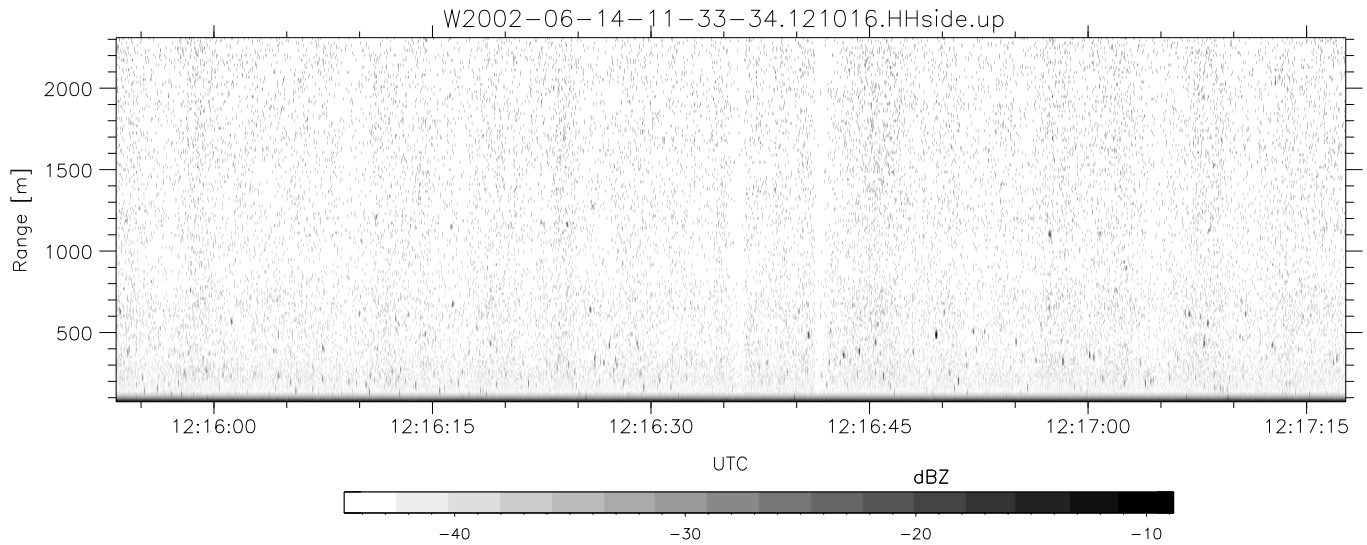
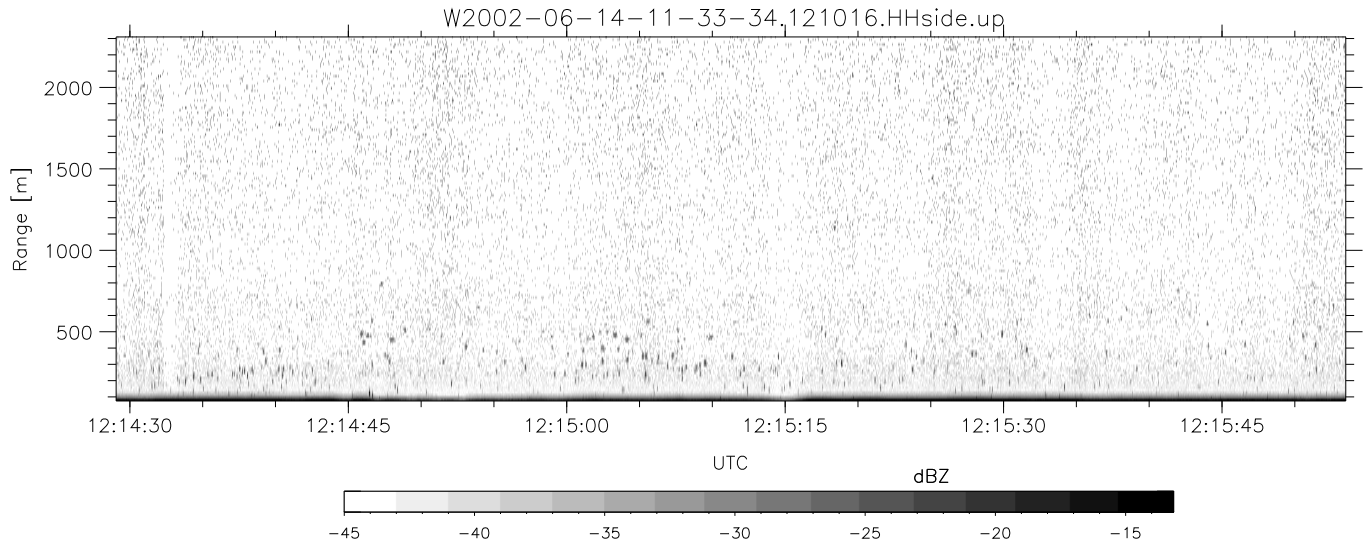


IHOP 2002 (dual-antenna config, modes 1,3,4,7) Data (cal: 49.0,50.0)

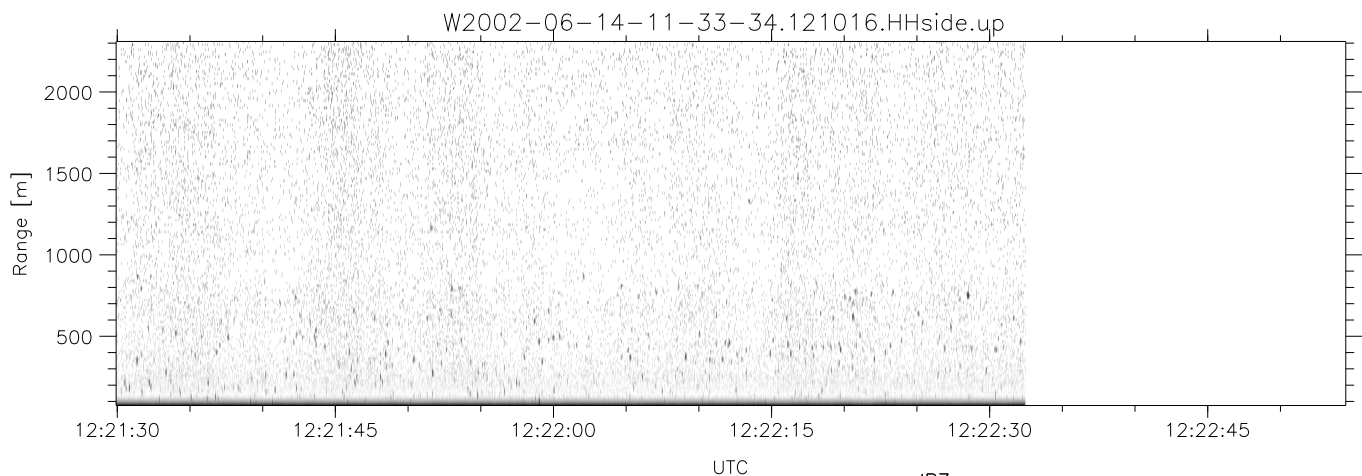
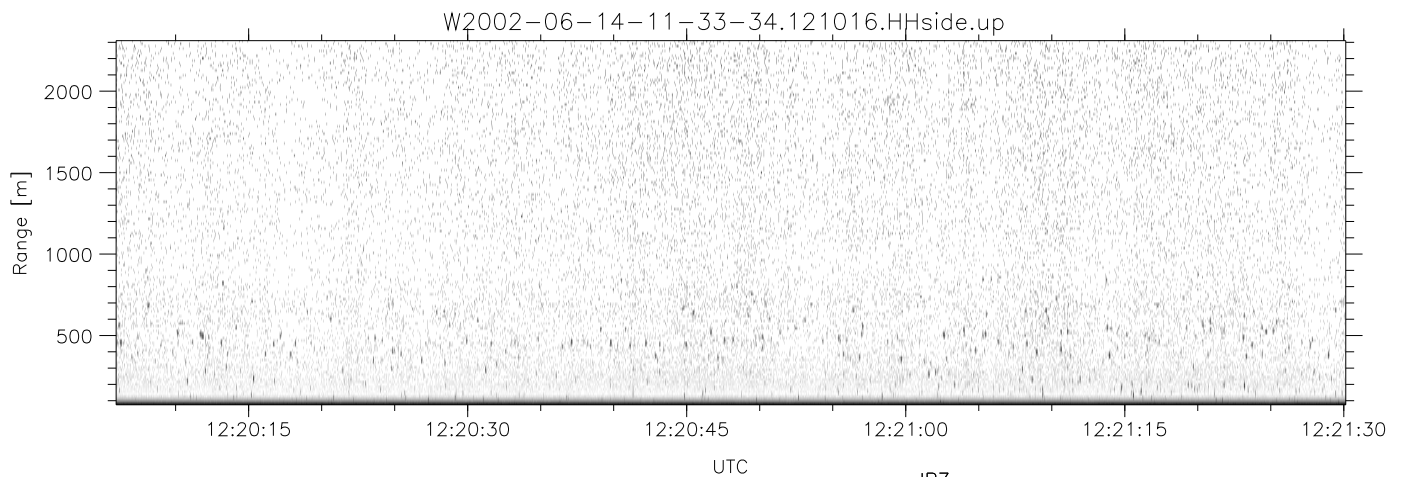
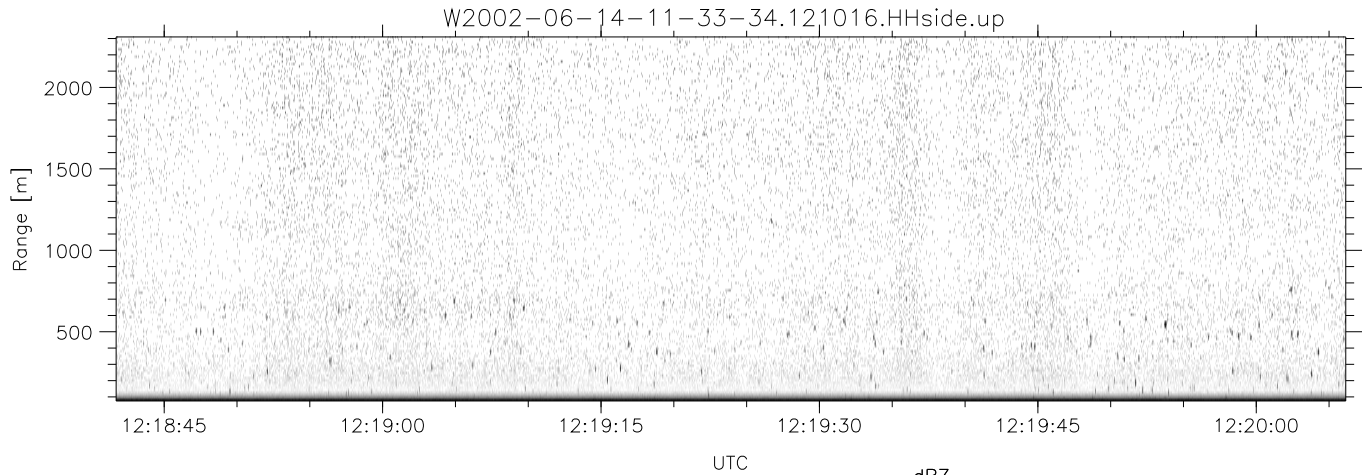
W2002-06-14-11-33-34 - SPPMAG	Min	Max	Mean	Std	Varc%	
IRIG:1,UTC: 11:33:29.94 to 12:39:31.65, Dur: 3962s	hhN(dB)	-66.11	-64.24	-65.18	-78.09	5.1
TimeLngth: 3961.70s, TimeInt: 24ms (40.9pps)	vvN(dB)	-66.39	-64.33	-65.44	-78.33	5.1
TimeCor=-13.0s, DSPDif(mn,min,mx):28,20,250	hhL(dB)	-13.69	-2.00	-4.54	-11.87	18.5
PPS(min,max,std): 33,42,2.56	vhL(dB)	-19.34	-1.50	-3.98	-10.88	20.4
Prof: 511 to 162678, NumProf(t/r): 162167/30122	ppN(m/s)	-15.80	15.80	0.05	9.03	
ProcTime/Recs: 12:10:16-12:22:32/90366-120487	ppT(m/s)	-0.04	0.03	-0.00	0.01	
MxACQtime: 17ms; DRate: 98.0KB/s; Flags: 0, 0, 0	vh/hh(dB)	-35.87	3.29	-3.57	-0.95	183.
Pulse: 275ns, IFfilt: 5.0MHz; ppPol: HH	hn_jmp(dB)	-0.99	1.33	0.16	-11.58	6.7
TxPol: H, PRF: 20 kHz	vn_jmp(dB)	-0.94	1.18	0.13	-11.57	6.8
Range: Delay 75m, Spacing 15m, Gates 150						
Ave. Pulses: 348, Rng/Prof Aspect@90m/s: 6.8						



IHOP 2002 (dual-antenna config, modes 1,3,4,7) Data (cal: 49.0,50.0)

W2002-06-14-11-33-34 - SPPMAG
 IRIG:1,UTC: 11:33:29.94 to 12:39:31.65, Dur: 3962s
 TimeLngth: 3961.70s, TimeInt: 24ms (40.9pps)
 TimeCor=-13.0s, DSPDif(mn,min,mx):28,20,250
 PPS(min,max,std): 33,42,2.56
 Prof: 511 to 162678, NumProf(t/r): 162167/30122
 ProcTime/Recs: 12:10:16-12:22:32/90366-120487
 MxACQtime: 17ms; DRate: 98.0KB/s; Flags: 0, 0, 0
 Pulse: 275ns, IFfilt: 5.0MHz; ppPol: HH
 TxPol: H, PRF: 20 kHz
 Range: Delay 75m, Spacing 15m, Gates 150
 Ave. Pulses: 348, Rng/Prof Aspect@90m/s: 6.8

	Min	Max	Mean	Std	Varc%
hhN(dB)	-66.11	-64.24	-65.18	-78.09	5.1
vvN(dB)	-66.39	-64.33	-65.44	-78.33	5.1
hhL(dB)	-13.69	-2.00	-4.54	-11.87	18.5
vhL(dB)	-19.34	-1.50	-3.98	-10.88	20.4
ppN(m/s)	-15.80	15.80	0.05	9.03	
ppT(m/s)	-0.04	0.03	-0.00	0.01	
vh/hh(dB)	-35.87	3.29	-3.57	-0.95	183.
hnjmp(dB)	-0.99	1.33	0.16	-11.58	6.7
vnjmp(dB)	-0.94	1.18	0.13	-11.57	6.8



IHOP 2002 (dual-antenna config, modes 1,3,4,7) Data (cal: 49.0,50.0)

	Min	Max	Mean	Std	Varc%
W2002-06-14-11-33-34 - SPPMAG					
IRIG:1,UTC: 11:33:29.94 to 12:39:31.65, Dur: 3962s	hhN (dB)	-66.11 -64.24	-65.18	-78.09	5.1
TimeLngth: 3961.70s, TimeInt: 24ms (40.9pps)	vvN (dB)	-66.39 -64.33	-65.44	-78.33	5.1
TimeCor=-13.0s, DSPDif(mn,min,mx):28,20,250	hhL (dB)	-13.69 -2.00	-4.54	-11.87	18.5
PPS(min,max,std): 33,42,2.56	vhL (dB)	-19.34 -1.50	-3.98	-10.88	20.4
Prof: 511 to 162678, NumProf(t/r): 162167/30122	ppN (m/s)	-15.80 15.80	0.05	9.03	
ProcTime/Recs: 12:10:16-12:22:32/90366-120487	ppT (m/s)	-0.04 0.03	-0.00	0.01	
MxACQtime: 17ms; DRate: 98.0KB/s; Flags: 0, 0, 0	vh/hh (dB)	-35.87 3.29	-3.57	-0.95	183.
Pulse: 275ns, IFfilt: 5.0MHz; ppPol: HH	hn_jmp (dB)	-0.99 1.33	0.16	-11.58	6.7
TxPol: H, PRF: 20 kHz	vn_jmp (dB)	-0.94 1.18	0.13	-11.57	6.8
Range: Delay 75m, Spacing 15m, Gates 150					
Ave. Pulses: 348, Rng/Prof Aspect@90m/s: 6.8					