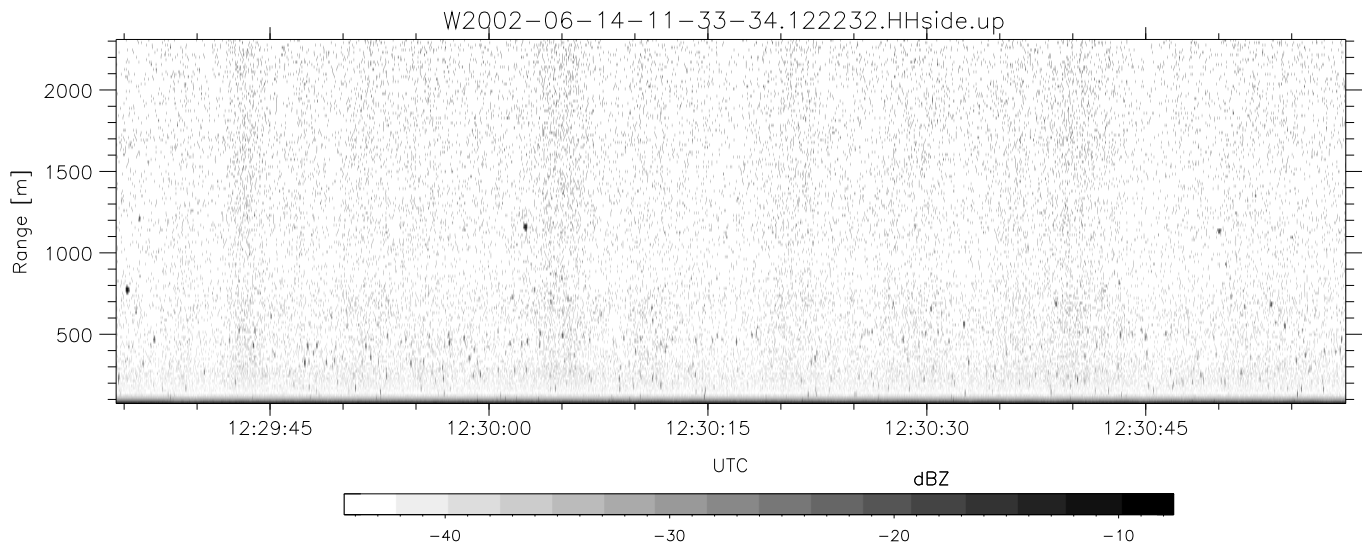
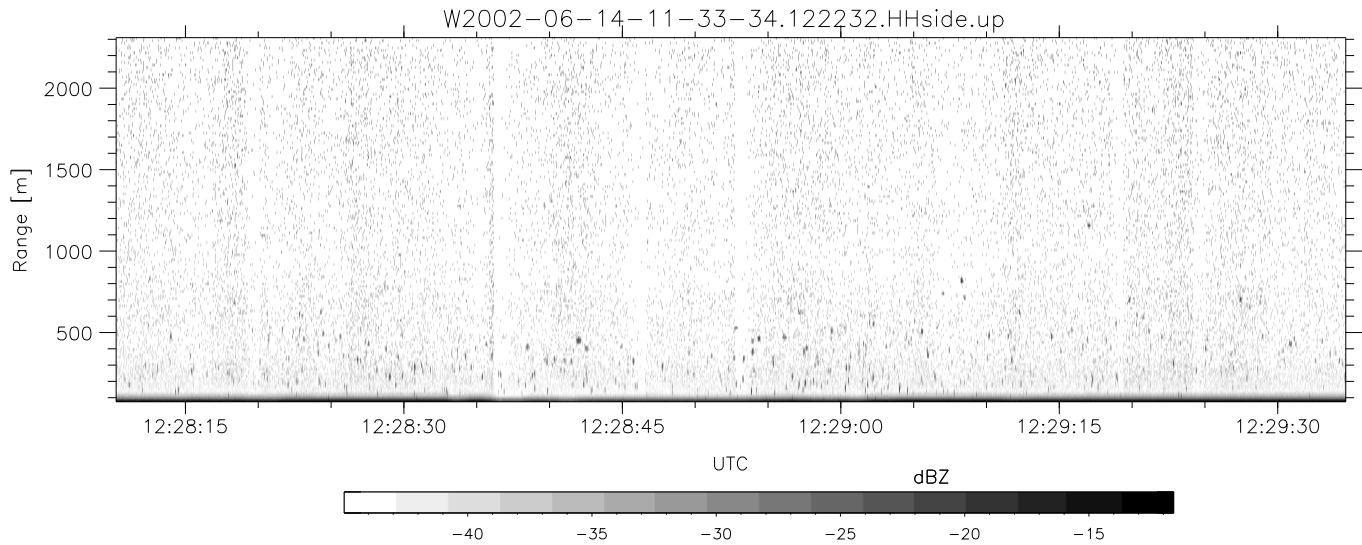
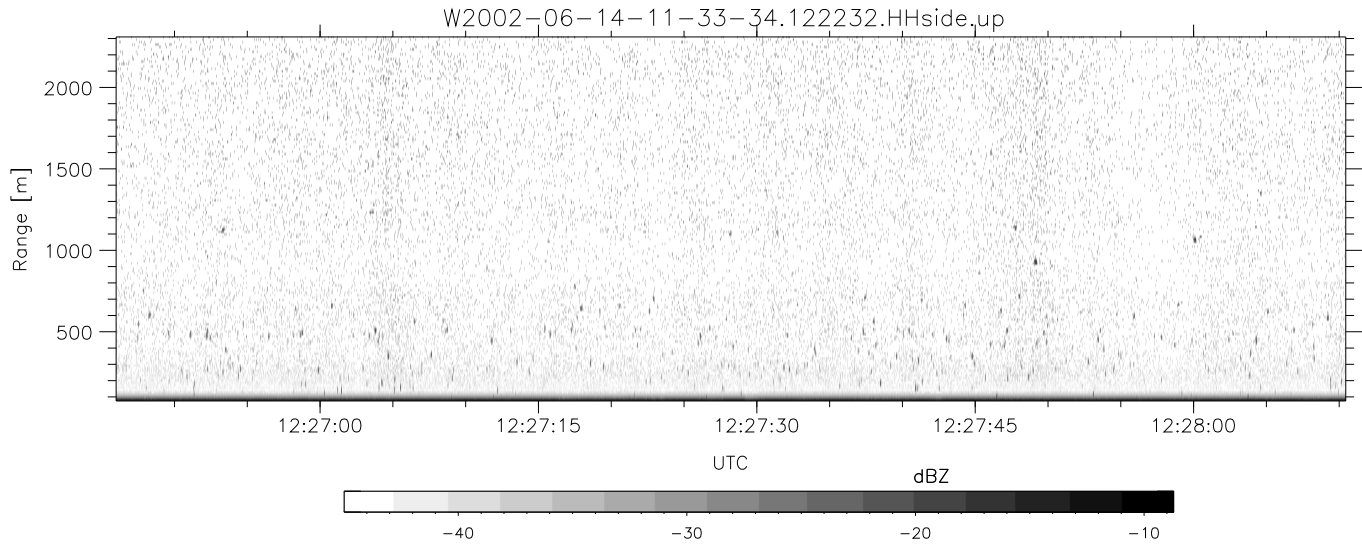


IHOP 2002 (dual-antenna config, modes 1,3,4,7) Data (cal: 49.0,50.0)

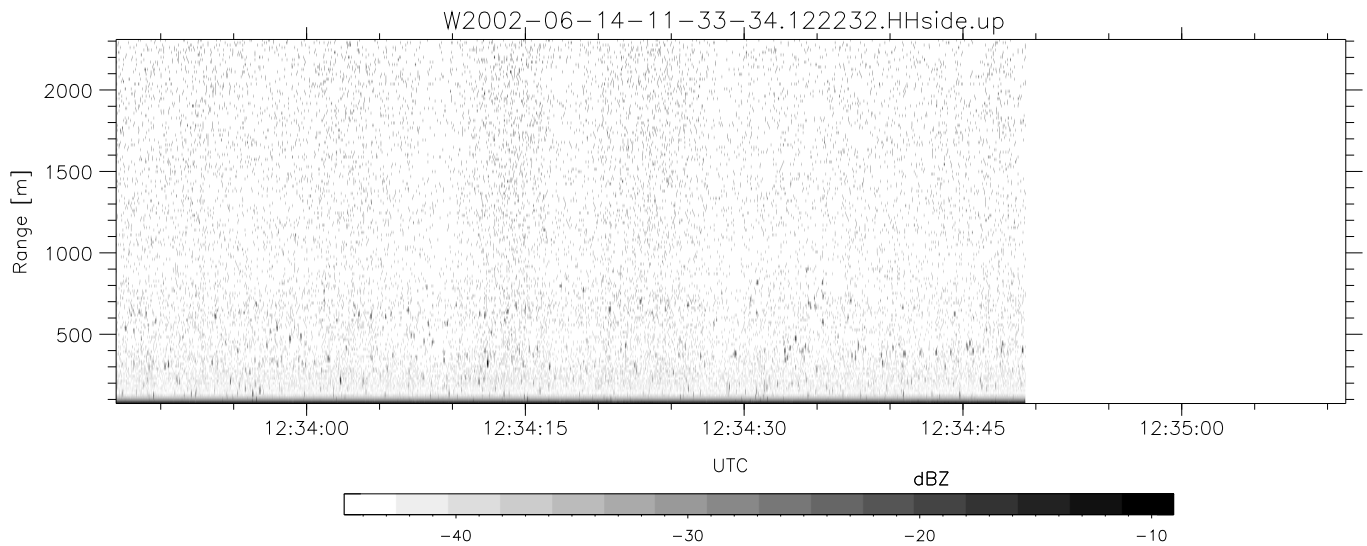
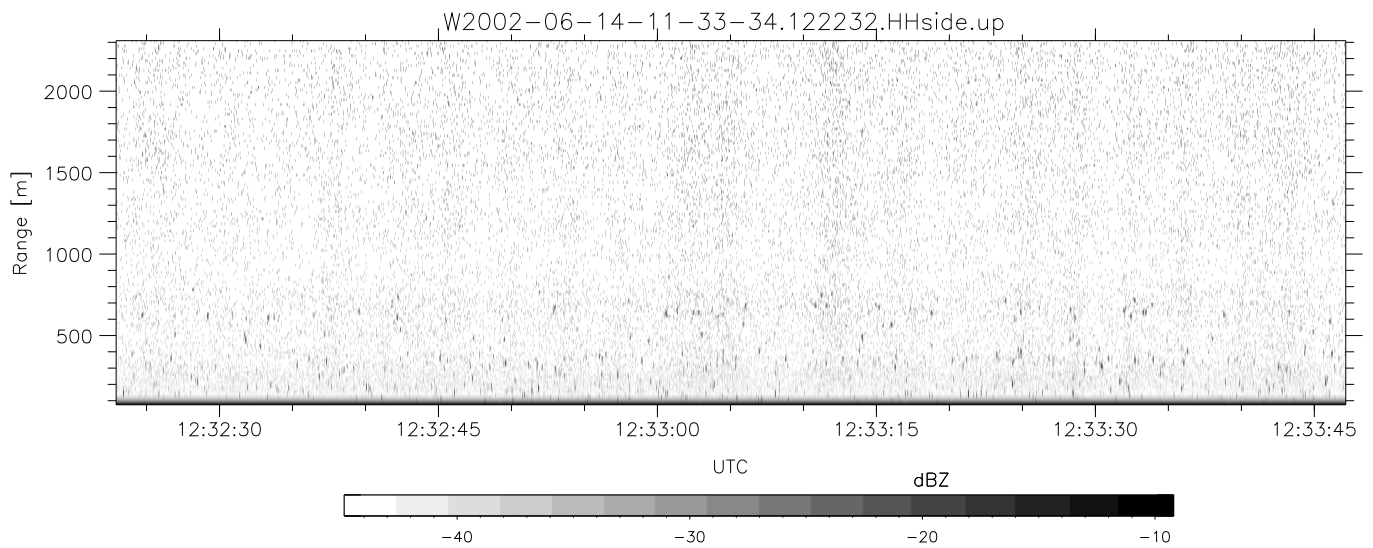
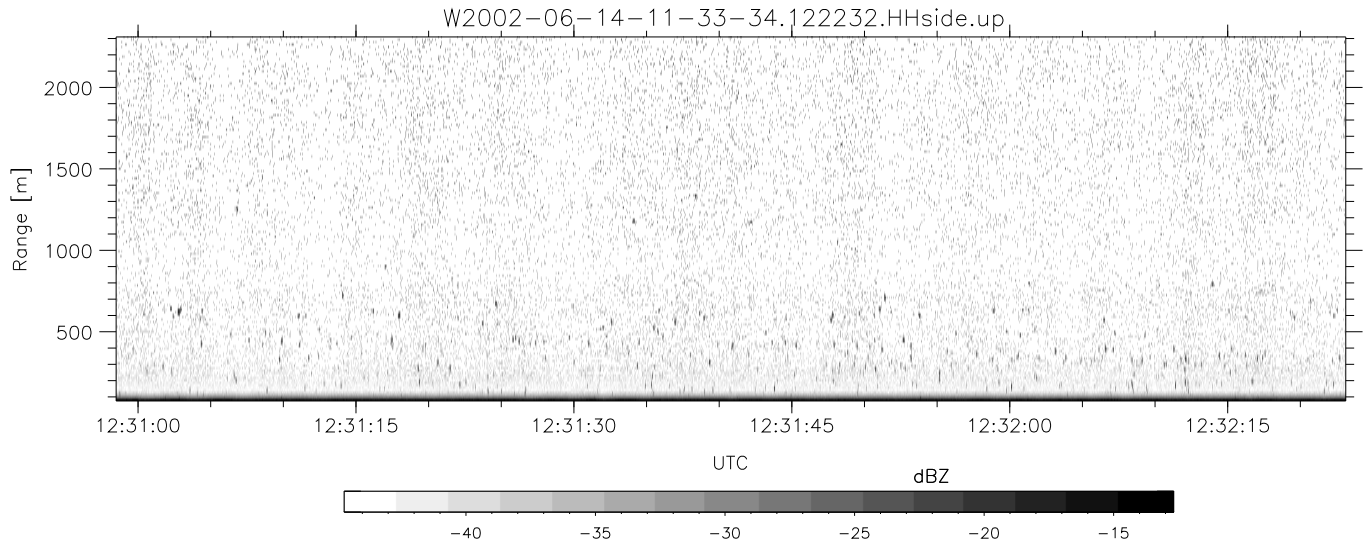
W2002-06-14-11-33-34 - SPPMAG	Min	Max	Mean	Std	Varc%	
IRIG:1,UTC: 11:33:29.94 to 12:39:31.65, Dur: 3962s	hhN(dB)	-66.21	-64.12	-65.26	-78.08	5.2
TimeLngth: 3961.70s, TimeInt: 24ms (40.9pps)	vvN(dB)	-66.46	-64.39	-65.51	-78.11	5.5
TimeCor=-13.0s, DSPDif(mn,min,mx):28,20,350	hhL(dB)	-12.15	-2.40	-4.44	-11.60	19.2
PPS(min,max,std): 22,42,2.75	vhL(dB)	-15.19	-1.89	-4.03	-10.78	21.1
Prof: 511 to 162678, NumProf(t/r): 162167/30122	ppN(m/s)	-15.80	15.80	0.24	9.05	
ProcTime/Recs: 12:22:32-12:34:49/120488-150609	ppT(m/s)	-0.03	0.02	-0.00	0.01	
MxACQtime: 17ms; DRate: 98.0KB/s; Flags: 0, 0, 0	vh/hh(dB)	-39.87	-12.86	-20.72	-17.44	212.
Pulse: 275ns, IFfilt: 5.0MHz; ppPol: HH	hnjmp(dB)	-1.08	1.21	0.16	-11.60	6.7
TxPol: H, PRF: 20 kHz	vnjmp(dB)	-0.95	1.26	0.13	-11.56	6.8
Range: Delay 75m, Spacing 15m, Gates 150						
Ave. Pulses: 348, Rng/Prof Aspect@90m/s: 6.8						



IHOP 2002 (dual-antenna config, modes 1,3,4,7) Data (cal: 49.0,50.0)

W2002-06-14-11-33-34 - SPPMAG  
 IRIG:1,UTC: 11:33:29.94 to 12:39:31.65, Dur: 3962s  
 TimeLngth: 3961.70s, TimeInt: 24ms (40.9pps)  
 TimeCor=-13.0s, DSPDif(mn,min,mx):28,20,350  
 PPS(min,max,std): 22,42,2.75  
 Prof: 511 to 162678, NumProf(t/r): 162167/30122  
 ProcTime/Recs: 12:22:32-12:34:49/120488-150609  
 MxACQtime: 17ms; DRate: 98.0KB/s; Flags: 0, 0, 0  
 Pulse: 275ns, IFfilt: 5.0MHz; ppPol: HH  
 TxPol: H, PRF: 20 kHz  
 Range: Delay 75m, Spacing 15m, Gates 150  
 Ave. Pulses: 348, Rng/Prof Aspect@90m/s: 6.8

	Min	Max	Mean	Std	Varc%
hhN(dB)	-66.21	-64.12	-65.26	-78.08	5.2
vvN(dB)	-66.46	-64.39	-65.51	-78.11	5.5
hhL(dB)	-12.15	-2.40	-4.44	-11.60	19.2
vhL(dB)	-15.19	-1.89	-4.03	-10.78	21.1
ppN(m/s)	-15.80	15.80	0.24	9.05	
ppT(m/s)	-0.03	0.02	-0.00	0.01	
vh/hh(dB)	-39.87	-12.86	-20.72	-17.44	212.
hnjmp(dB)	-1.08	1.21	0.16	-11.60	6.7
vnjmp(dB)	-0.95	1.26	0.13	-11.56	6.8



IHOP 2002 (dual-antenna config, modes 1,3,4,7) Data (cal: 49.0,50.0)

W2002-06-14-11-33-34 - SPPMAG  
 IRIG:1,UTC: 11:33:29.94 to 12:39:31.65, Dur: 3962s  
 TimeLngth: 3961.70s, TimeInt: 24ms (40.9pps)  
 TimeCor=-13.0s, DSPDif(mn,min,mx):28,20,350  
 PPS(min,max,std): 22,42,2.75  
 Prof: 511 to 162678, NumProf(t/r): 162167/30122  
 ProcTime/Recs: 12:22:32-12:34:49/120488-150609  
 MxACQtime: 17ms; DRate: 98.0KB/s; Flags: 0, 0, 0  
 Pulse: 275ns, IFfilt: 5.0MHz; ppPol: HH  
 TxPol: H, PRF: 20 kHz  
 Range: Delay 75m, Spacing 15m, Gates 150  
 Ave. Pulses: 348, Rng/Prof Aspect@90m/s: 6.8

	Min	Max	Mean	Std	Varc%
hhN (dB)	-66.21	-64.12	-65.26	-78.08	5.2
vvN (dB)	-66.46	-64.39	-65.51	-78.11	5.5
hhL (dB)	-12.15	-2.40	-4.44	-11.60	19.2
vhL (dB)	-15.19	-1.89	-4.03	-10.78	21.1
ppN (m/s)	-15.80	15.80	0.24	9.05	
ppT (m/s)	-0.03	0.02	-0.00	0.01	
vh/hh (dB)	-39.87	-12.86	-20.72	-17.44	212.
hnjmp (dB)	-1.08	1.21	0.16	-11.60	6.7
vnjmp (dB)	-0.95	1.26	0.13	-11.56	6.8