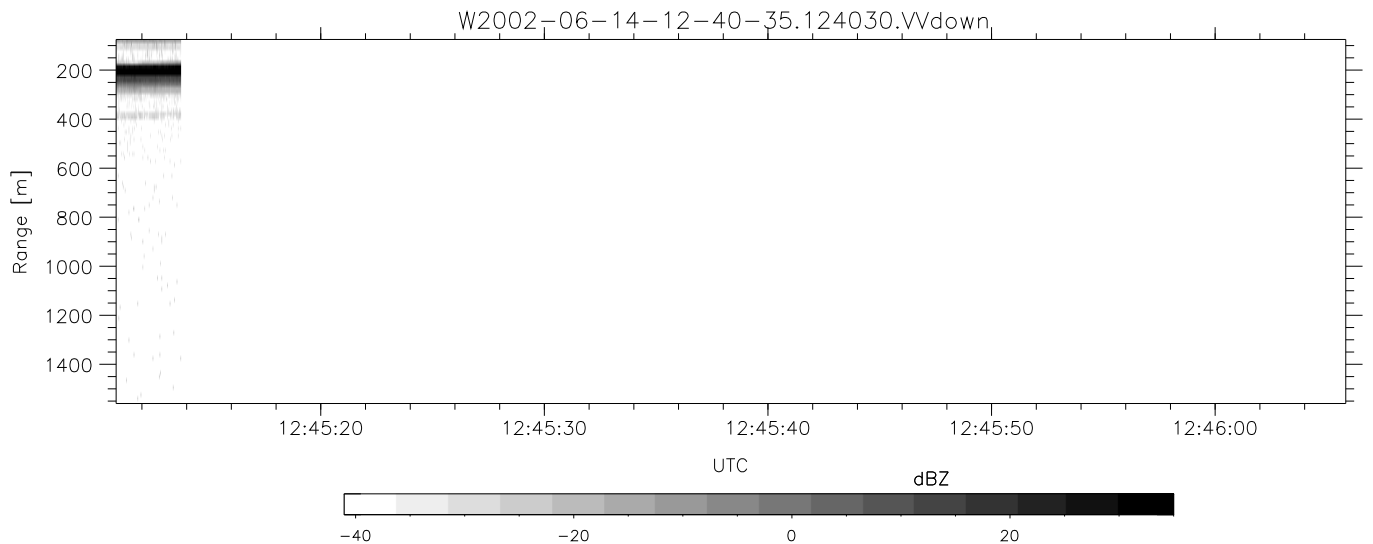
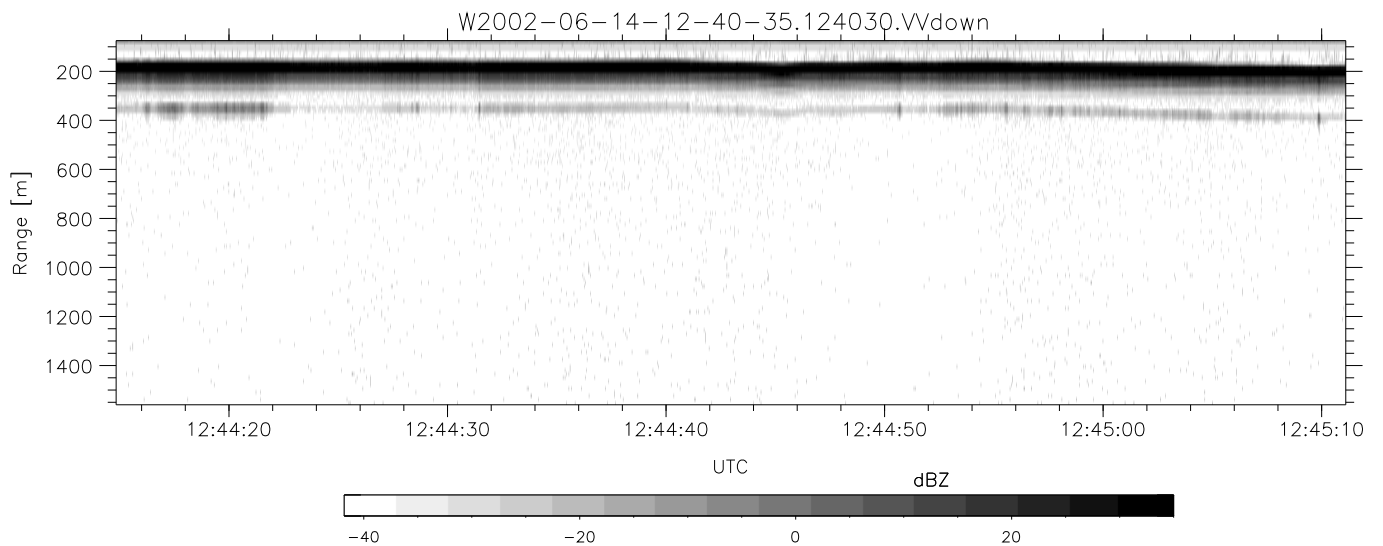
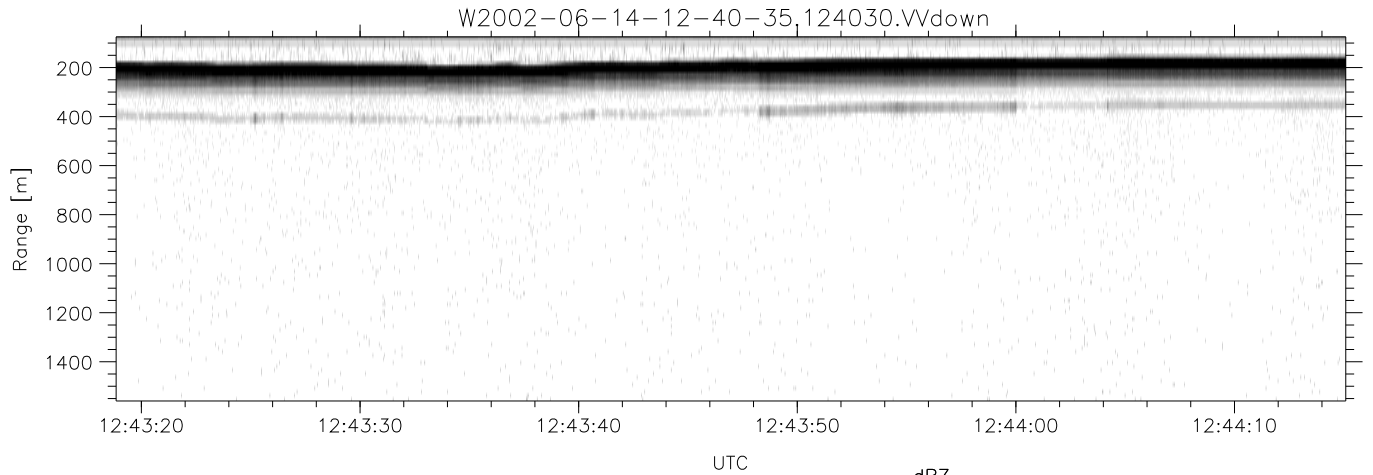


IHOP 2002 (dual-antenna config, modes 1,3,4,7) Data (cal: 49.0,50.0)

W2002-06-14-12-40-35 - PPMAG4
 IRIG:1,UTC: 12:40:30.84 to 12:45:13.73, Dur: 283s
 TimeLngth: 282.89s, TimeInt: 28ms (34.6pps)
 TimeCor=-13.0s, DSPDif(mn,min,mx):29,28,311
 PPS(min,max,std): 24,36,2.24
 Prof: 323 to 10105, NumProf(t/r): 9782/9782
 MxACQtime: 33ms; DRate: 193.6KB/s; Flags: 0, 0, 0
 Pulse: 275ns, IFfilt: 5.0MHz; ppPol: HH HV VV
 TxPol: HHVV, PRF: 20 10 20 10 kHz
 Range: Delay 75m, Spacing 15m, Gates 100
 Ave. Pulses: 84, Rng/Prof Aspect@90m/s: 5.8

	Min	Max	Mean	Std	Varc%
hhN(dB)	-67.06	-63.27	-65.33	-75.44	9.8
vvN(dB)	-67.39	-64.11	-65.61	-75.66	9.9
hhL(dB)	-15.83	-2.33	-4.25	-9.84	27.6
vvL(dB)	-5.91	0.93	-1.27	-7.92	21.7
ppN(m/s)	-12.47	12.39	0.10	4.14	
ppT(m/s)	-98.53	97.90	0.76	32.68	
hh/vv(dB)	-NaN	47.23	19.77	35.83	4033
vh/hh(dB)	-99.00	-99.00	-99.00	-99.00	-99.
hv/vv(dB)	-NaN	-32.50	-47.87	-44.57	213.
hnjmp(dB)	-2.14	2.43	0.16	-8.52	13.6
vnjmp(dB)	-2.34	2.57	0.14	-8.54	13.6



IHOP 2002 (dual-antenna config, modes 1,3,4,7) Data (cal: 49.0,50.0)

W2002-06-14-12-40-35 - PPMAG4
 IRIG:1,UTC: 12:40:30.84 to 12:45:13.73, Dur: 283s
 TimeLngth: 282.89s, TimeInt: 28ms (34.6pps)
 TimeCor=-13.0s, DSPDif(mn,min,mx):29,28,311
 PPS(min,max,std): 24,36,2.24
 Prof: 323 to 10105, NumProf(t/r): 9782/9782
 MxACQtime: 33ms; DRate: 193.6KB/s; Flags: 0, 0, 0
 Pulse: 275ns, IFfilt: 5.0MHz; ppPol: HH HV VV
 TxPol: HHVV, PRF: 20 10 20 10 kHz
 Range: Delay 75m, Spacing 15m, Gates 100
 Ave. Pulses: 84, Rng/Prof Aspect@90m/s: 5.8

	Min	Max	Mean	Std	Varc%
hhN(dB)	-67.06	-63.27	-65.33	-75.44	9.8
vvN(dB)	-67.39	-64.11	-65.61	-75.66	9.9
hhL(dB)	-15.83	-2.33	-4.25	-9.84	27.6
vvL(dB)	-5.91	0.93	-1.27	-7.92	21.7
ppN(m/s)	-12.47	12.39	0.10	4.14	
ppT(m/s)	-98.53	97.90	0.76	32.68	
hh/vv(dB)	-NaN	47.23	19.77	35.83	4033
vh/hh(dB)	-99.00	-99.00	-99.00	-99.00	-99.
hv/vv(dB)	-NaN	-32.50	-47.87	-44.57	213.
hnjmp(dB)	-2.14	2.43	0.16	-8.52	13.6
vnjmp(dB)	-2.34	2.57	0.14	-8.54	13.6