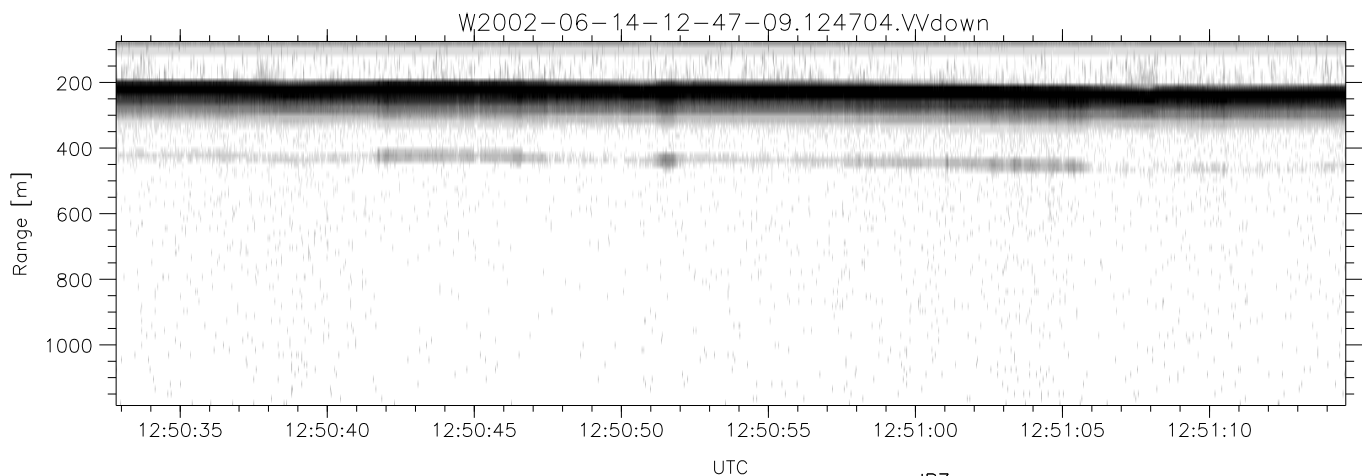
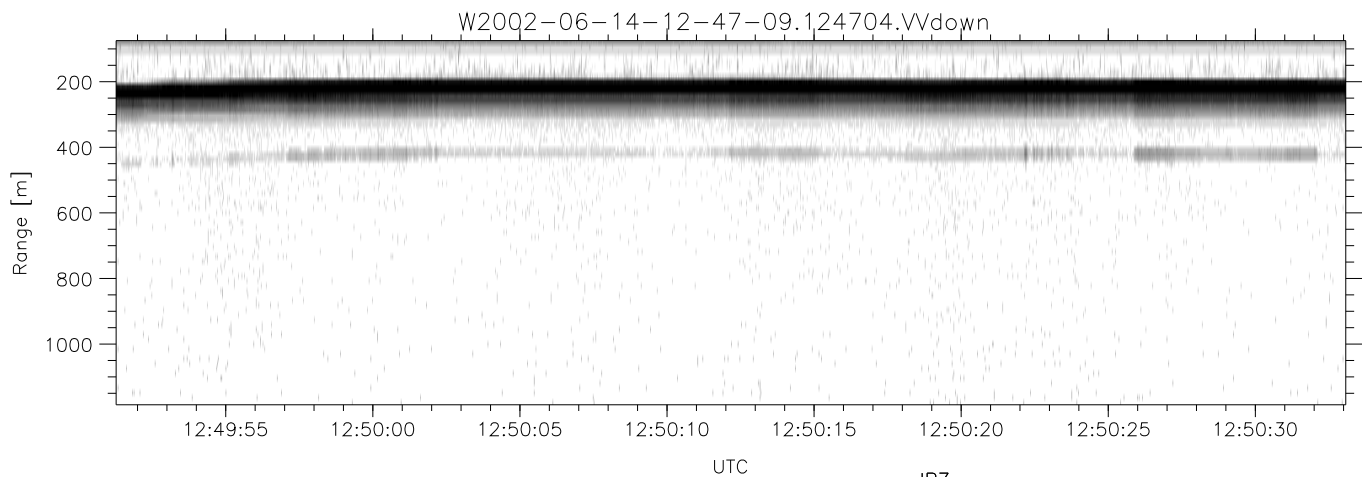
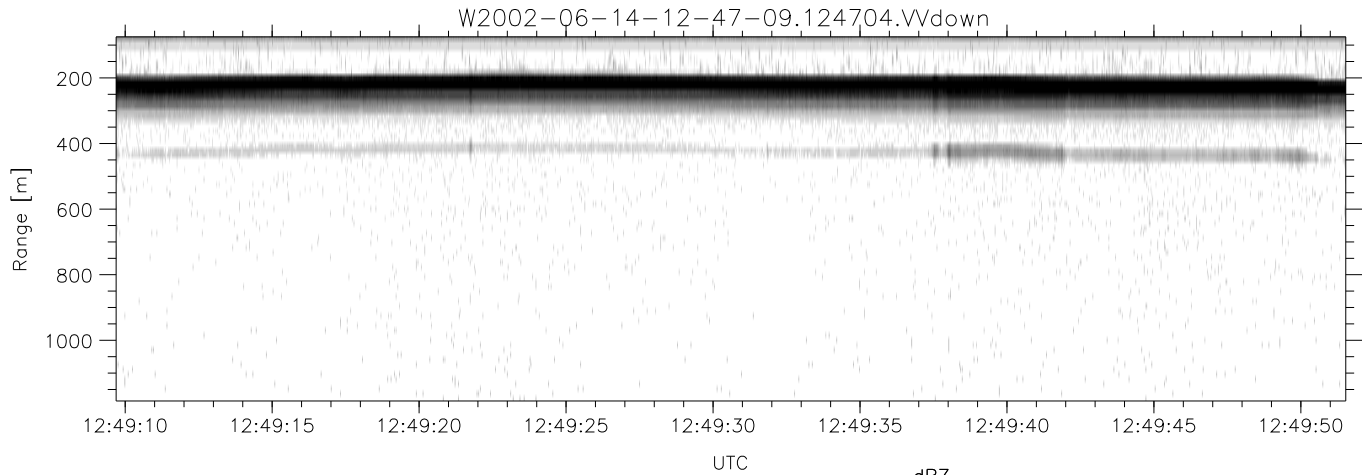


IHOP 2002 (dual-antenna config, modes 1,3,4,7) Data (cal: 49.0,50.0)

W2002-06-14-12-47-09 - PPMAG4
 IRIG:1,UTC: 12:47:04.94 to 14:14:34.13, Dur: 5250s
 TimeLngth: 5249.19s, TimeInt: 28ms (34.6pps)
 TimeCor=-13.0s, DSPDif(mn,min,mx):28,28,448
 PPS(min,max,std): 25,36,1.70
 Prof: 2869 to 184451, NumProf(t/r): 181582/12802
 ProcTime/Recs: 12:47:04-12:53:11/0-12801
 MxACQtime: 33ms; DRate: 146.3KB/s; Flags: 0, 0, 0
 Pulse: 275ns, IFfilt: 5.0MHz; ppPol: HH HV VV
 TxPol: HHVV, PRF: 20 10 20 10 kHz
 Range: Delay 75m, Spacing 15m, Gates 75
 Ave. Pulses: 84, Rng/Prof Aspect@90m/s: 5.8

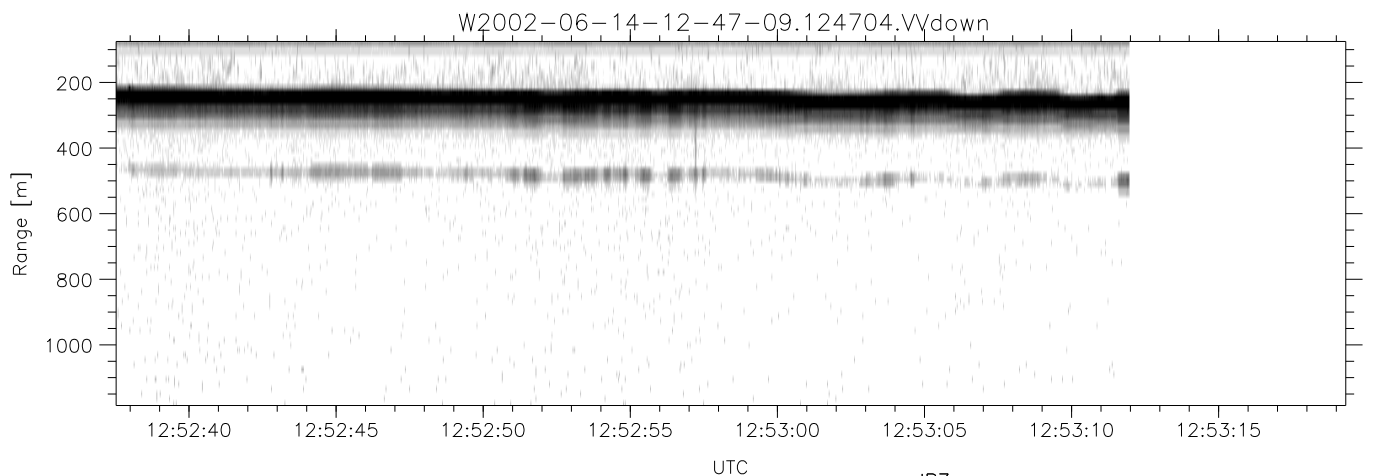
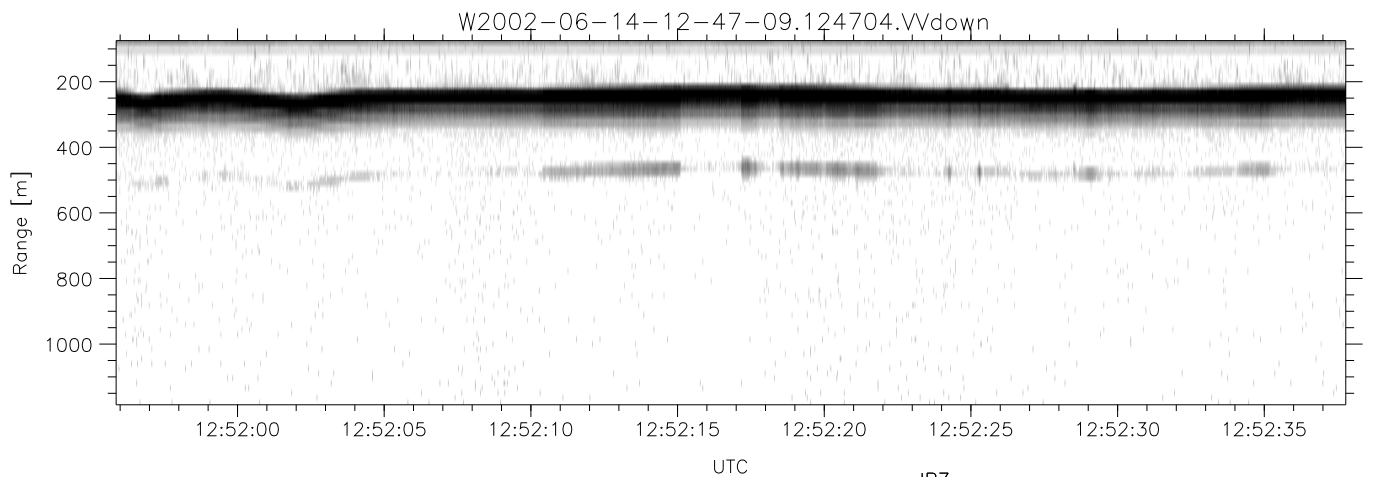
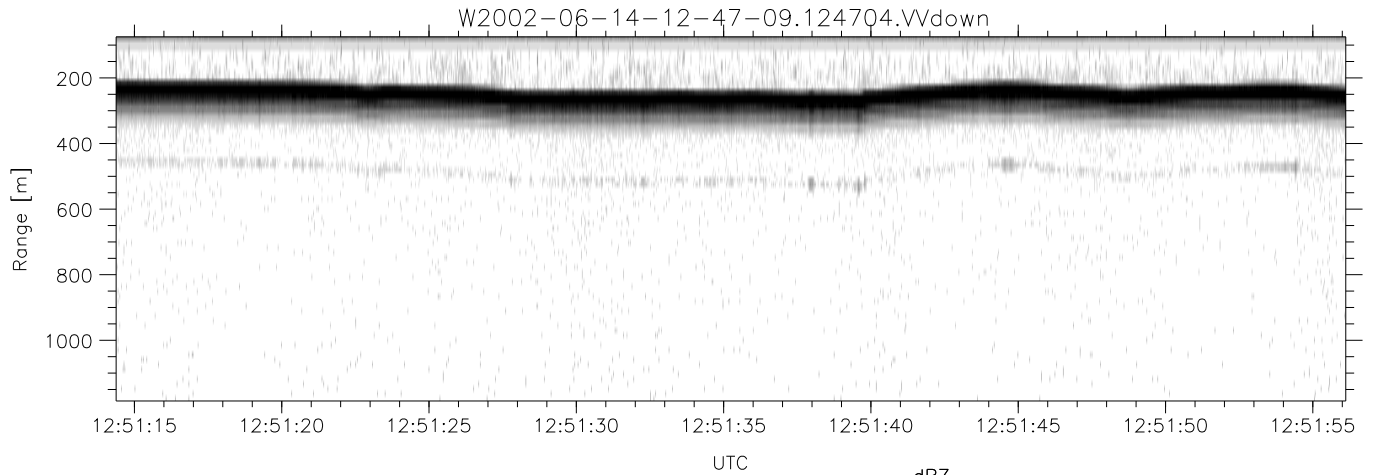
	Min	Max	Mean	Std	Varc%
hhN(dB)	-66.98	-63.78	-65.37	-75.48	9.7
vvN(dB)	-67.24	-63.87	-65.66	-75.77	9.8
hhL(dB)	-9.18	-2.83	-4.43	-12.78	14.6
vvL(dB)	-4.62	0.52	-1.43	-10.09	13.6
ppN(m/s)	-12.09	11.89	-0.05	4.09	
ppT(m/s)	-95.51	93.94	-0.40	32.30	
hh/vv(dB)	-NaN	34.63	18.65	24.90	422.
vh/hh(dB)	-99.00	-99.00	-99.00	-99.00	-99.
hv/vv(dB)	-NaN	-30.62	-48.66	-45.39	212.
hnjmp(dB)	-2.09	2.48	0.16	-8.49	13.6
vnjmp(dB)	-1.92	2.22	0.15	-8.49	13.7



IHOP 2002 (dual-antenna config, modes 1,3,4,7) Data (cal: 49.0,50.0)

W2002-06-14-12-47-09 - PPMAG4
 IRIG:1,UTC: 12:47:04.94 to 14:14:34.13, Dur: 5250s
 TimeLngth: 5249.19s, TimeInt: 28ms (34.6pps)
 TimeCor=-13.0s, DSPDif(mn,min,mx):28,28,448
 PPS(min,max,std): 25,36,1.70
 Prof: 2869 to 184451, NumProf(t/r): 181582/12802
 ProcTime/Recs: 12:47:04-12:53:11/0-12801
 MxAcQtime: 33ms; DRate: 146.3KB/s; Flags: 0, 0, 0
 Pulse: 275ns, IFfilt: 5.0MHz; ppPol: HH HV VV
 TxPol: HHVV, PRF: 20 10 20 10 kHz
 Range: Delay 75m, Spacing 15m, Gates 75
 Ave. Pulses: 84, Rng/Prof Aspect@90m/s: 5.8

	Min	Max	Mean	Std	Varc%
hhN(dB)	-66.98	-63.78	-65.37	-75.48	9.7
vvN(dB)	-67.24	-63.87	-65.66	-75.77	9.8
hhL(dB)	-9.18	-2.83	-4.43	-12.78	14.6
vvL(dB)	-4.62	0.52	-1.43	-10.09	13.6
ppN(m/s)	-12.09	11.89	-0.05	4.09	
ppT(m/s)	-95.51	93.94	-0.40	32.30	
hh/vv(dB)	-NaN	34.63	18.65	24.90	422.
vh/hh(dB)	-99.00	-99.00	-99.00	-99.00	-99.
hv/vv(dB)	-NaN	-30.62	-48.66	-45.39	212.
hnjmp(dB)	-2.09	2.48	0.16	-8.49	13.6
vnjmp(dB)	-1.92	2.22	0.15	-8.49	13.7



IHOP 2002 (dual-antenna config, modes 1,3,4,7) Data (cal: 49.0,50.0)

W2002-06-14-12-47-09 - PPMAG4
 IRIG:1,UTC: 12:47:04.94 to 14:14:34.13, Dur: 5250s
 TimeLngth: 5249.19s, TimeInt: 28ms (34.6pps)
 TimeCor=-13.0s, DSPDif(mn,min,mx):28,28,448
 PPS(min,max,std): 25,36,1.70
 Prof: 2869 to 184451, NumProf(t/r): 181582/12802
 ProcTime/Recs: 12:47:04-12:53:11/0-12801
 MxACQtime: 33ms; DRate: 146.3KB/s; Flags: 0, 0, 0
 Pulse: 275ns, IFfilt: 5.0MHz; ppPol: HH HV VV
 TxPol: HHVV, PRF: 20 10 20 10 kHz
 Range: Delay 75m, Spacing 15m, Gates 75
 Ave. Pulses: 84, Rng/Prof Aspect@90m/s: 5.8

	Min	Max	Mean	Std	Varc%
hhN(dB)	-66.98	-63.78	-65.37	-75.48	9.7
vvN(dB)	-67.24	-63.87	-65.66	-75.77	9.8
hhL(dB)	-9.18	-2.83	-4.43	-12.78	14.6
vvL(dB)	-4.62	0.52	-1.43	-10.09	13.6
ppN(m/s)	-12.09	11.89	-0.05	4.09	
ppT(m/s)	-95.51	93.94	-0.40	32.30	
hh/vv(dB)	-NaN	34.63	18.65	24.90	422.
vh/hh(dB)	-99.00	-99.00	-99.00	-99.00	-99.
hv/vv(dB)	-NaN	-30.62	-48.66	-45.39	212.
hnjmp(dB)	-2.09	2.48	0.16	-8.49	13.6
vnjmp(dB)	-1.92	2.22	0.15	-8.49	13.7