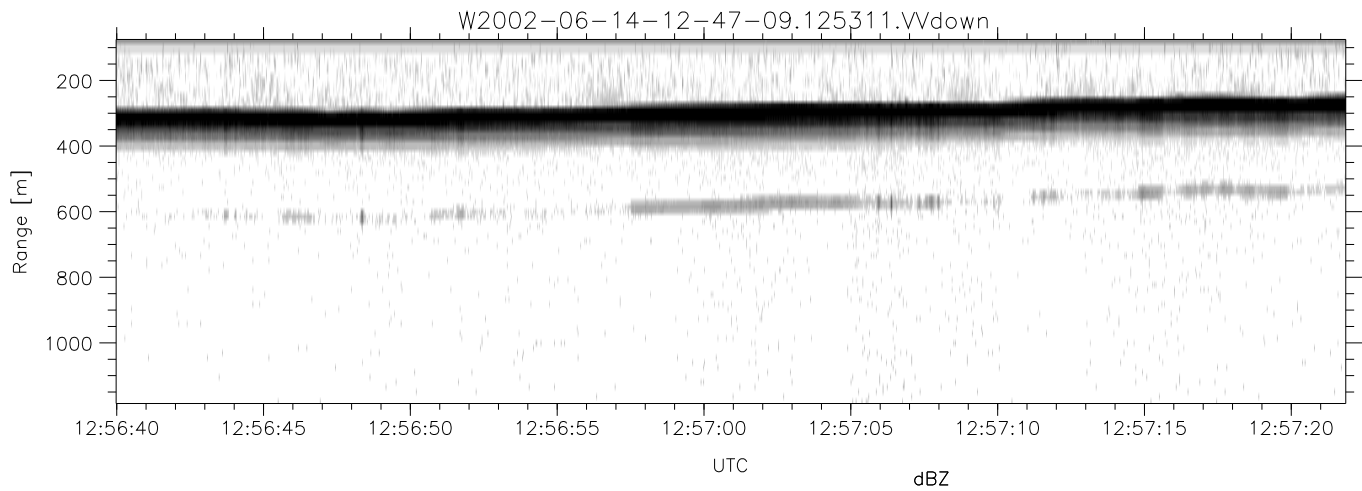
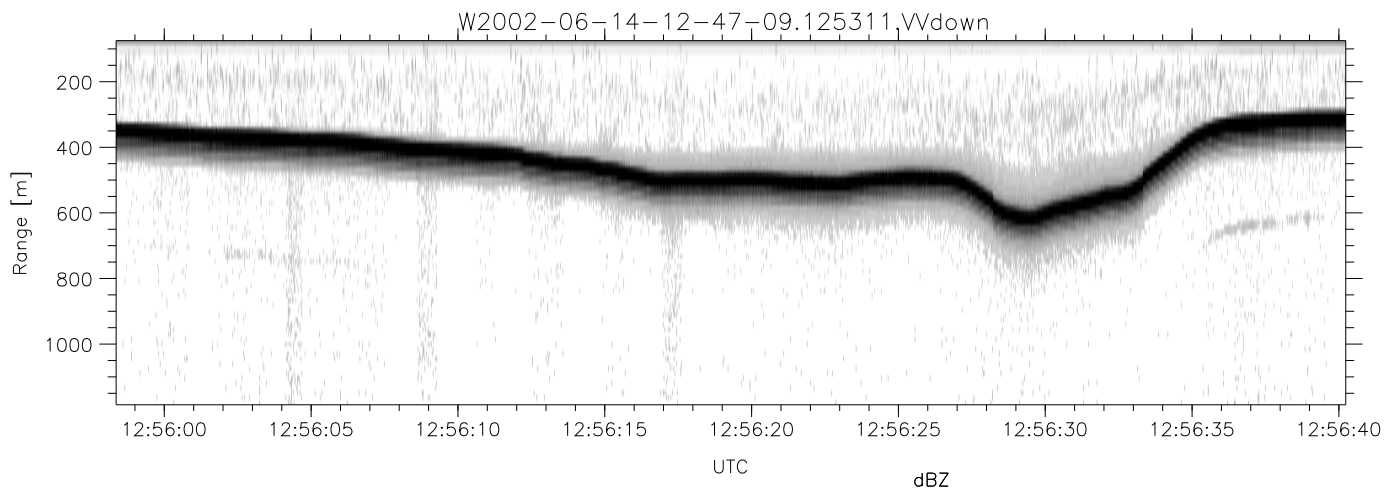
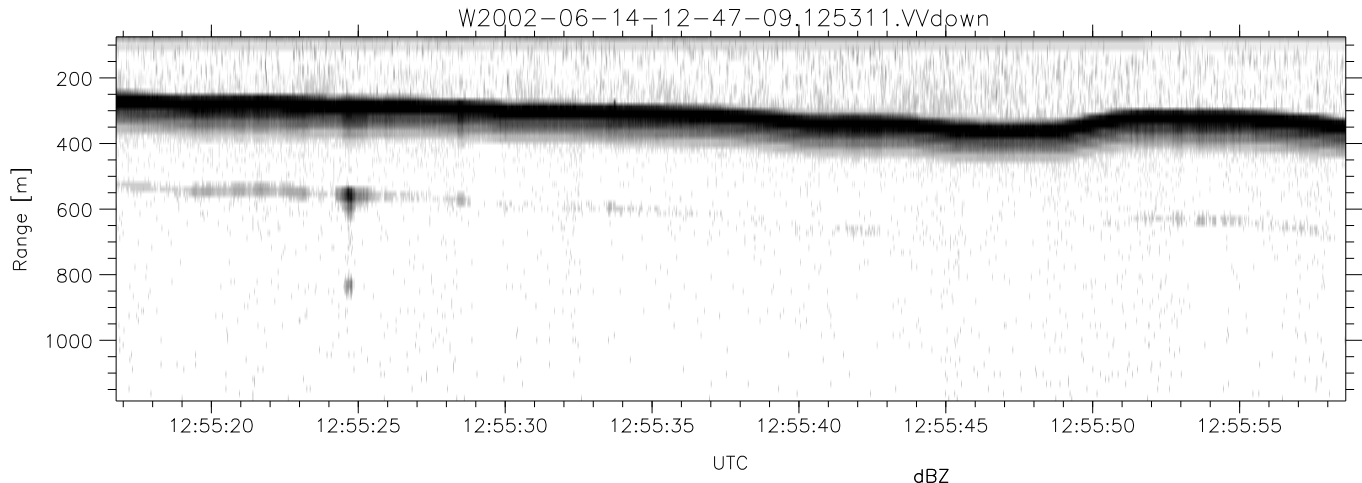


IHOP 2002 (dual-antenna config, modes 1,3,4,7) Data (cal: 49.0,50.0)

W2002-06-14-12-47-09 - PPMAG4  
 IRIG:1,UTC: 12:47:04.94 to 14:14:34.13, Dur: 5250s  
 TimeLngth: 5249.19s, TimeInt: 28ms (34.6pps)  
 TimeCor=-13.0s, DSPDif(mn,min,mx):28,28,263  
 PPS(min,max,std): 28,36,1.68  
 Prof: 2869 to 184451, NumProf(t/r): 181582/12802  
 ProcTime/Recs: 12:53:11-12:59:19/12802-25603  
 MxACQtime: 33ms; DRate: 146.3KB/s; Flags: 0, 0, 0  
 Pulse: 275ns, IFilt: 5.0MHz; ppPol: HH HV VV  
 TxPol: HHVV, PRF: 20 10 20 10 kHz  
 Range: Delay 75m, Spacing 15m, Gates 75  
 Ave. Pulses: 84, Rng/Prof Aspect@90m/s: 5.8

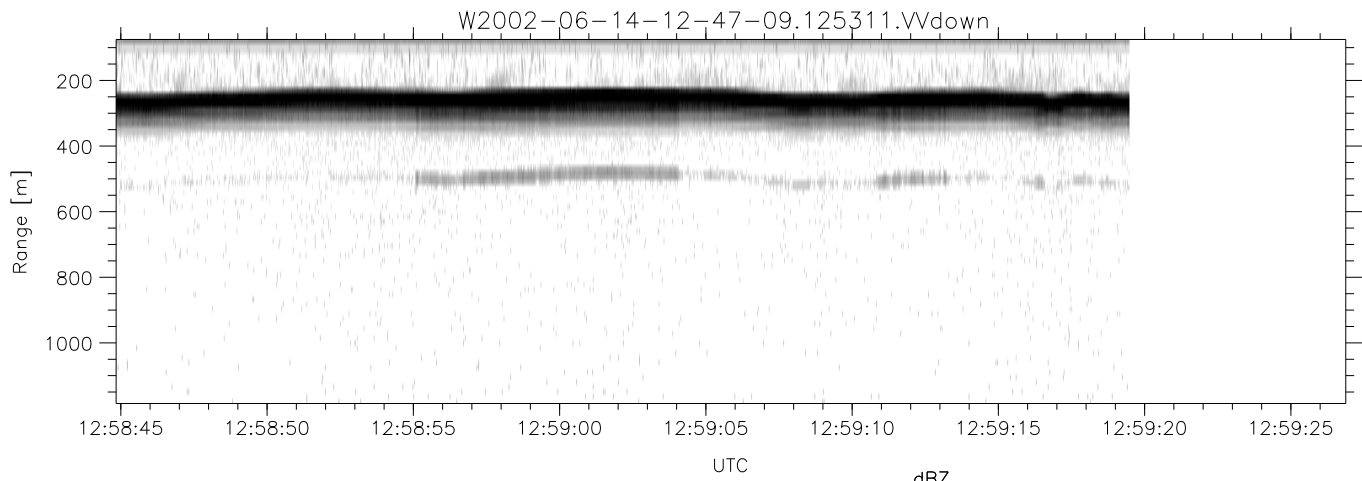
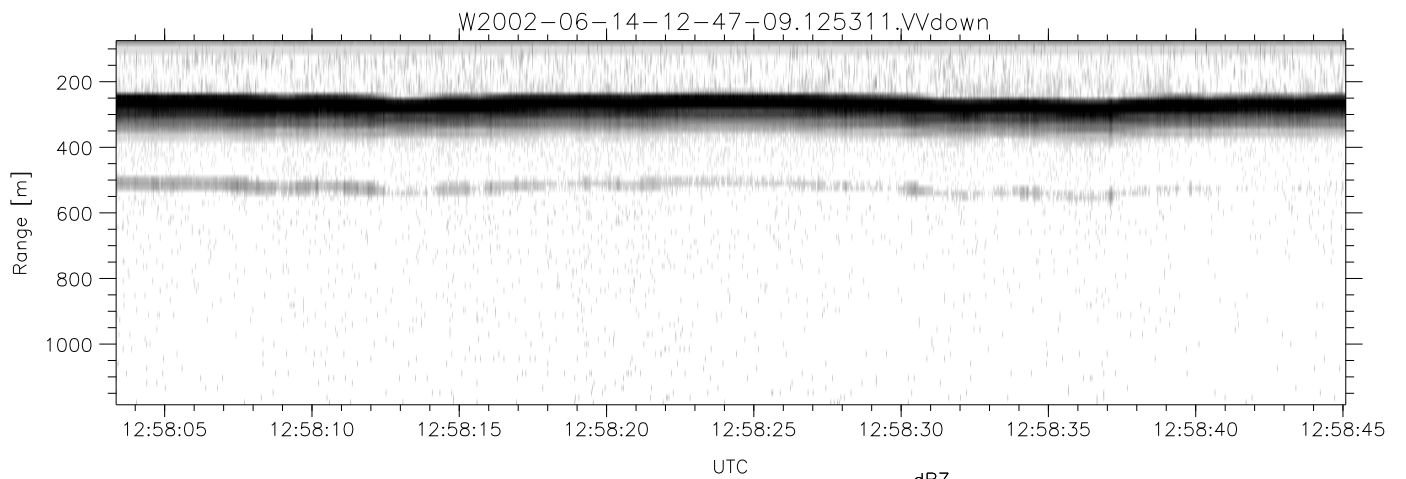
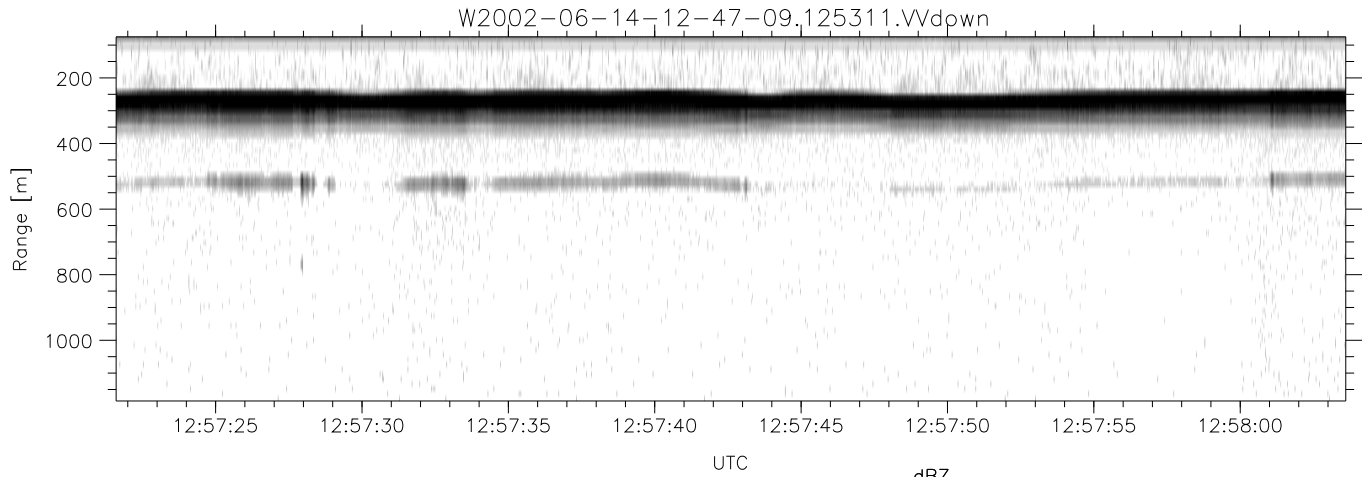
	Min	Max	Mean	Std	Varc%
hhN(dB)	-67.17	-63.65	-65.38	-75.47	9.8
vvN(dB)	-67.43	-63.77	-65.65	-75.63	10.0
hhL(dB)	-17.20	-2.40	-4.65	-10.02	29.0
vvL(dB)	-5.65	1.18	-1.40	-7.67	23.6
ppN(m/s)	-12.39	12.45	0.14	4.14	
ppT(m/s)	-97.91	98.33	1.10	32.70	
hh/vv(dB)	-NaN	36.60	19.15	26.64	561.
vh/hh(dB)	-99.00	-99.00	-99.00	-99.00	-99.
hv/vv(dB)	-NaN	-29.15	-49.83	-45.79	253.
hnjmp(dB)	-2.03	2.22	0.16	-8.47	13.7
vnjmp(dB)	-2.02	2.26	0.16	-8.44	13.8



IHOP 2002 (dual-antenna config, modes 1,3,4,7) Data (cal: 49.0,50.0)

W2002-06-14-12-47-09 - PPMAG4  
 IRIG:1,UTC: 12:47:04.94 to 14:14:34.13, Dur: 5250s  
 TimeLngth: 5249.19s, TimeInt: 28ms (34.6pps)  
 TimeCor=-13.0s, DSPDif(mn,min,mx):28,28,263  
 PPS(min,max,std): 28,36,1.68  
 Prof: 2869 to 184451, NumProf(t/r): 181582/12802  
 ProcTime/Recs: 12:53:11-12:59:19/12802-25603  
 MxACQtime: 33ms; DRate: 146.3KB/s; Flags: 0, 0, 0  
 Pulse: 275ns, IFilt: 5.0MHz; ppPol: HH HV VV  
 TxPol: HHVV, PRF: 20 10 20 10 kHz  
 Range: Delay 75m, Spacing 15m, Gates 75  
 Ave. Pulses: 84, Rng/Prof Aspect@90m/s: 5.8

	Min	Max	Mean	Std	Varc%
hhN(dB)	-67.17	-63.65	-65.38	-75.47	9.8
vvN(dB)	-67.43	-63.77	-65.65	-75.63	10.0
hhL(dB)	-17.20	-2.40	-4.65	-10.02	29.0
vvL(dB)	-5.65	1.18	-1.40	-7.67	23.6
ppN(m/s)	-12.39	12.45	0.14	4.14	
ppT(m/s)	-97.91	98.33	1.10	32.70	
hh/vv(dB)	-NaN	36.60	19.15	26.64	561.
vh/hh(dB)	-99.00	-99.00	-99.00	-99.00	-99.
hv/vv(dB)	-NaN	-29.15	-49.83	-45.79	253.
hnjmp(dB)	-2.03	2.22	0.16	-8.47	13.7
vnjmp(dB)	-2.02	2.26	0.16	-8.44	13.8



IHOP 2002 (dual-antenna config, modes 1,3,4,7) Data (cal: 49.0,50.0)

W2002-06-14-12-47-09 - PPMAG4  
 IRIG:1,UTC: 12:47:04.94 to 14:14:34.13, Dur: 5250s  
 TimeLngth: 5249.19s, TimeInt: 28ms (34.6pps)  
 TimeCor=-13.0s, DSPDif(mn,min,mx):28,28,263  
 PPS(min,max,std): 28,36,1.68  
 Prof: 2869 to 184451, NumProf(t/r): 181582/12802  
 ProcTime/Recs: 12:53:11-12:59:19/12802-25603  
 MxACQtime: 33ms; DRate: 146.3KB/s; Flags: 0, 0, 0  
 Pulse: 275ns, IFfilt: 5.0MHz; ppPol: HH HV VV  
 TxPol: HHVV, PRF: 20 10 20 10 kHz  
 Range: Delay 75m, Spacing 15m, Gates 75  
 Ave. Pulses: 84, Rng/Prof Aspect@90m/s: 5.8

	Min	Max	Mean	Std	Varc%
hhN(dB)	-67.17	-63.65	-65.38	-75.47	9.8
vvN(dB)	-67.43	-63.77	-65.65	-75.63	10.0
hhL(dB)	-17.20	-2.40	-4.65	-10.02	29.0
vvL(dB)	-5.65	1.18	-1.40	-7.67	23.6
ppN(m/s)	-12.39	12.45	0.14	4.14	
ppT(m/s)	-97.91	98.33	1.10	32.70	
hh/vv(dB)	-NaN	36.60	19.15	26.64	561.
vh/hh(dB)	-99.00	-99.00	-99.00	-99.00	-99.
hv/vv(dB)	-NaN	-29.15	-49.83	-45.79	253.
hnjmp(dB)	-2.03	2.22	0.16	-8.47	13.7
vnjmp(dB)	-2.02	2.26	0.16	-8.44	13.8