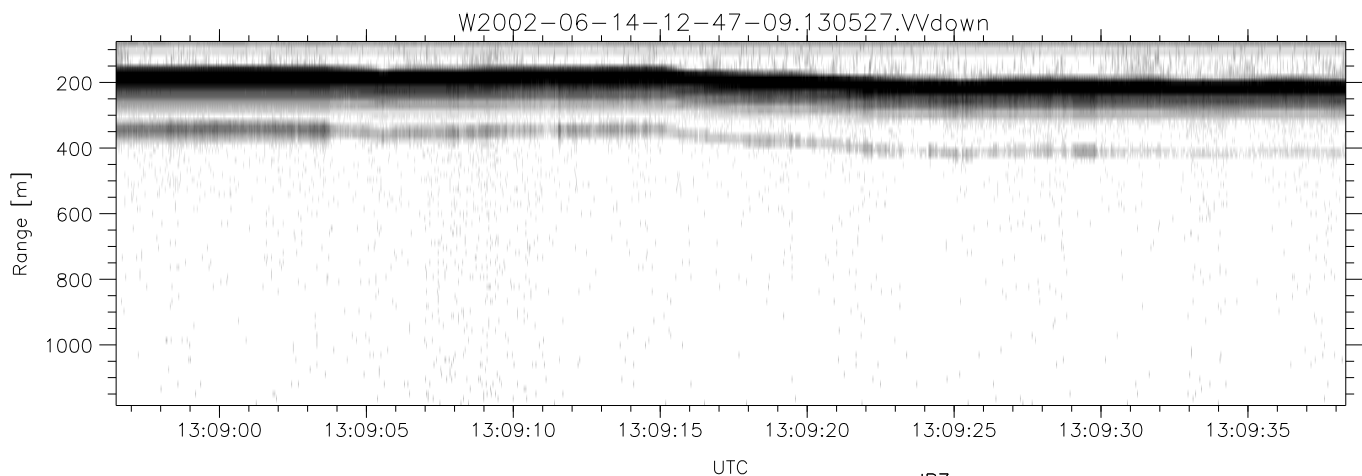
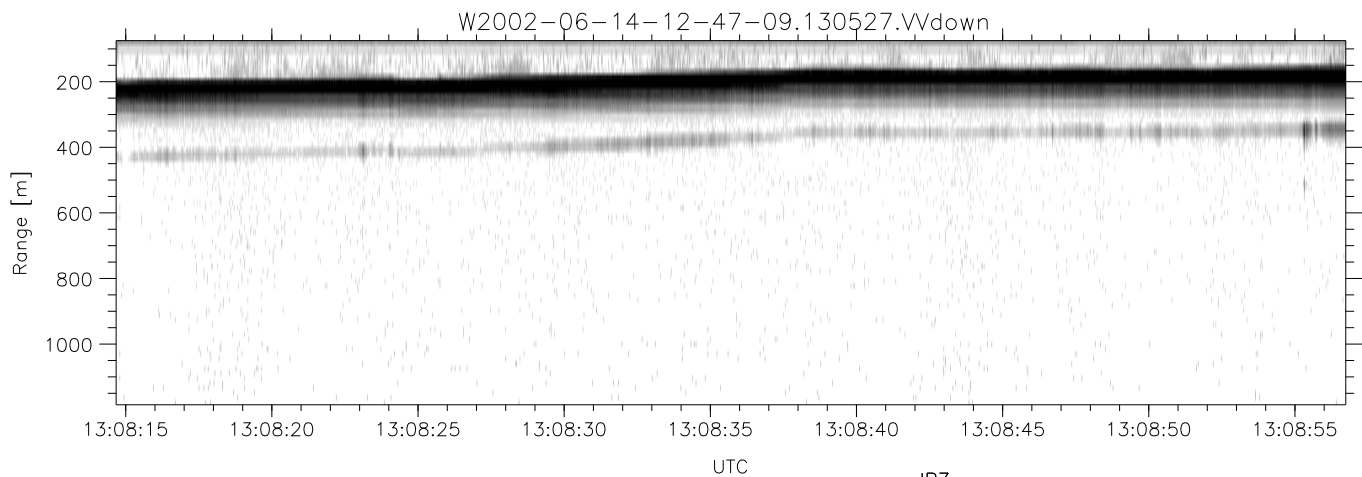
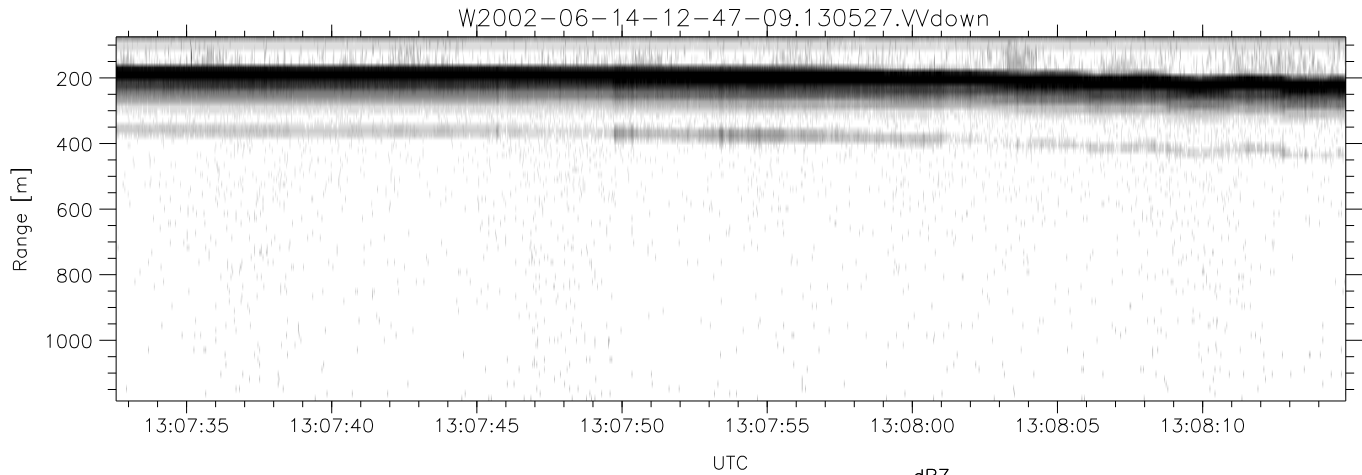


IHOP 2002 (dual-antenna config, modes 1,3,4,7) Data (cal: 49.0,50.0)

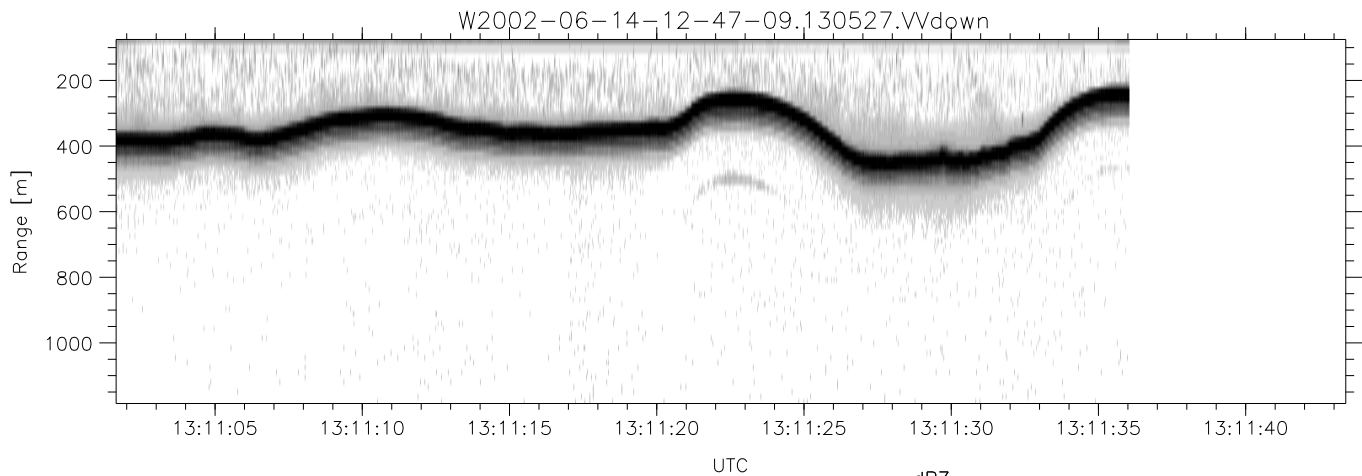
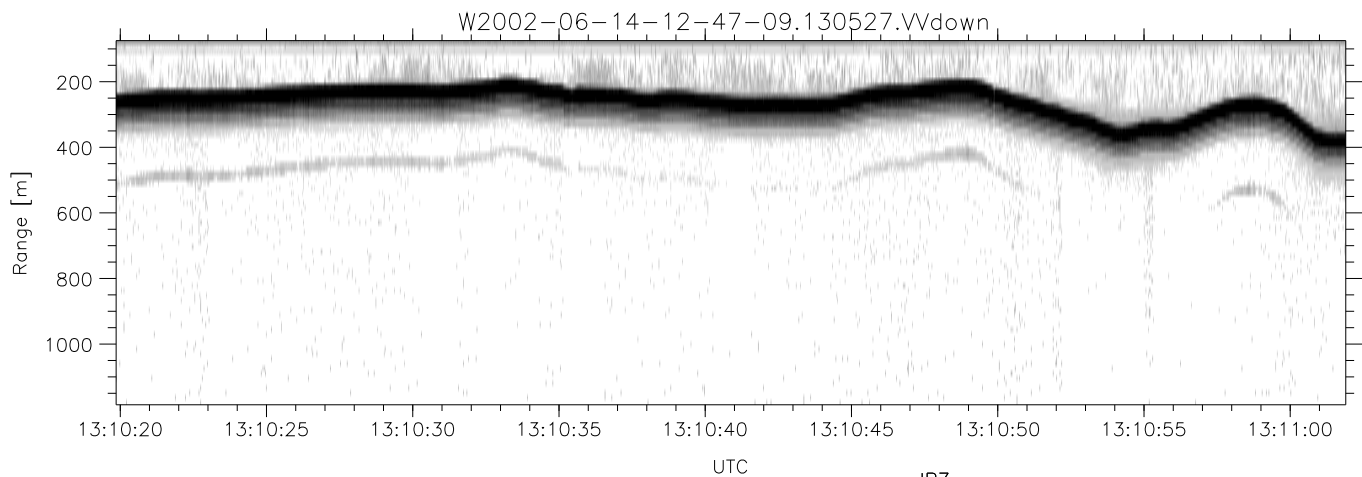
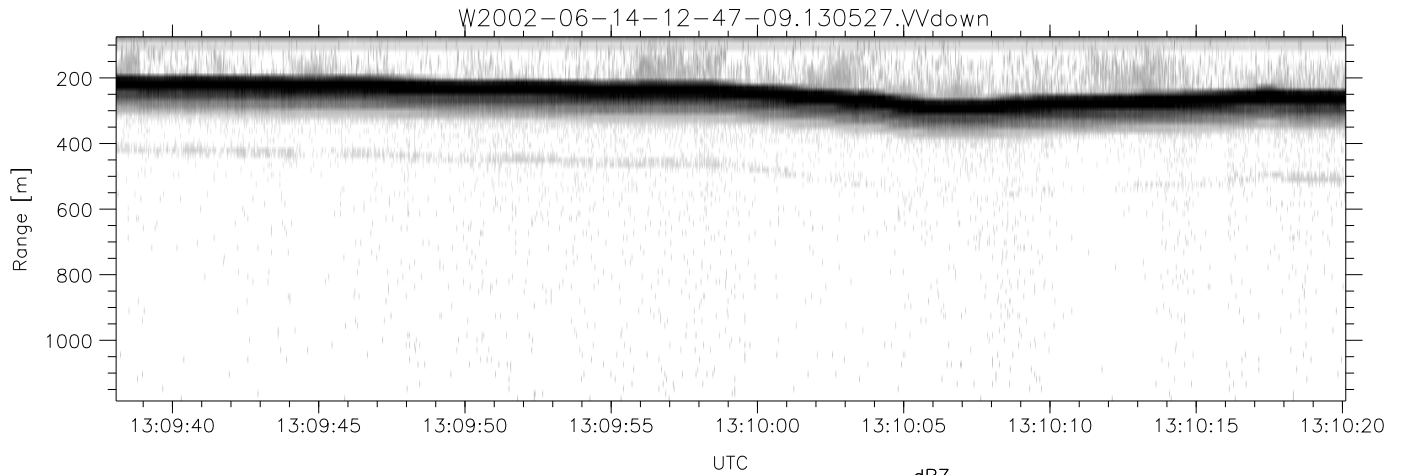
W2002-06-14-12-47-09 - PPMAG4	Min	Max	Mean	Std	Varc%	
IRIG:1,UTC: 12:47:04.94 to 14:14:34.13, Dur: 5250s	hhN (dB)	-67.01	-63.55	-65.38	-75.41	9.9
TimeLngth: 5249.19s, TimeInt: 28ms (34.6pps)	vvN (dB)	-67.56	-64.02	-65.64	-75.42	10.5
TimeCor=-13.0s, DSPDif(mn,min,mx):28,28,234	hhL (dB)	-15.33	-2.38	-4.52	-10.56	24.9
PPS(min,max,std): 27,36,1.71	vvL (dB)	-16.58	1.27	-1.28	-8.21	20.3
Prof: 2869 to 184451, NumProf(t/r): 181582/12802	ppN (m/s)	-12.77	12.57	0.40	4.15	
ProcTime/Recs: 13:05:27-13:11:36/38406-51207	ppT (m/s)	-100.8	99.28	3.19	32.82	
MxACQtime: 33ms; DRate: 146.3KB/s; Flags: 0, 0, 0	hh/vv (dB)	-NaN	40.03	17.03	26.51	886.
Pulse: 275ns, IFfilt: 5.0MHz; ppPol: HH HV VV	vh/hh (dB)	-99.00	-99.00	-99.00	-99.00	-99.
TxPol: HHVV, PRF: 20 10 20 10 kHz	hv/vv (dB)	-NaN	-33.20	-48.37	-45.06	214.
Range: Delay 75m, Spacing 15m, Gates 75	hnjmp (dB)	-2.01	2.47	0.17	-8.48	13.6
Ave. Pulses: 84, Rng/Prof Aspect@90m/s: 5.8	vnjmp (dB)	-2.00	2.19	0.16	-8.42	13.9



IHOP 2002 (dual-antenna config, modes 1,3,4,7) Data (cal: 49.0,50.0)

W2002-06-14-12-47-09 - PPMAG4
 IRIG:1,UTC: 12:47:04.94 to 14:14:34.13, Dur: 5250s
 TimeLngth: 5249.19s, TimeInt: 28ms (34.6pps)
 TimeCor=-13.0s, DSPDif(mn,min,mx):28,28,234
 PPS(min,max,std): 27,36,1.71
 Prof: 2869 to 184451, NumProf(t/r): 181582/12802
 ProcTime/Recs: 13:05:27-13:11:36/38406-51207
 MxACQtime: 33ms; DRate: 146.3KB/s; Flags: 0, 0, 0
 Pulse: 275ns, IFilt: 5.0MHz; ppPol: HH HV VV
 TxPol: HHVV, PRF: 20 10 20 10 kHz
 Range: Delay 75m, Spacing 15m, Gates 75
 Ave. Pulses: 84, Rng/Prof Aspect@90m/s: 5.8

	Min	Max	Mean	Std	Varc%
hhN(dB)	-67.01	-63.55	-65.38	-75.41	9.9
vvN(dB)	-67.56	-64.02	-65.64	-75.42	10.5
hhL(dB)	-15.33	-2.38	-4.52	-10.56	24.9
vvL(dB)	-16.58	1.27	-1.28	-8.21	20.3
ppN(m/s)	-12.77	12.57	0.40	4.15	
ppT(m/s)	-100.8	99.28	3.19	32.82	
hh/vv(dB)	-NaN	40.03	17.03	26.51	886.
vh/hh(dB)	-99.00	-99.00	-99.00	-99.00	-99.
hv/vv(dB)	-NaN	-33.20	-48.37	-45.06	214.
hnjmp(dB)	-2.01	2.47	0.17	-8.48	13.6
vnjmp(dB)	-2.00	2.19	0.16	-8.42	13.9



IHOP 2002 (dual-antenna config, modes 1,3,4,7) Data (cal: 49.0,50.0)

W2002-06-14-12-47-09 - PPMAG4
 IRIG:1,UTC: 12:47:04.94 to 14:14:34.13, Dur: 5250s
 TimeLngth: 5249.19s, TimeInt: 28ms (34.6pps)
 TimeCor=-13.0s, DSPDif(mn,min,mx):28,28,234
 PPS(min,max,std): 27,36,1.71
 Prof: 2869 to 184451, NumProf(t/r): 181582/12802
 ProcTime/Recs: 13:05:27-13:11:36/38406-51207
 MxACQtime: 33ms; DRate: 146.3KB/s; Flags: 0, 0, 0
 Pulse: 275ns, IFfilt: 5.0MHz; ppPol: HH HV VV
 TxPol: HHVV, PRF: 20 10 20 10 kHz
 Range: Delay 75m, Spacing 15m, Gates 75
 Ave. Pulses: 84, Rng/Prof Aspect@90m/s: 5.8

	Min	Max	Mean	Std	Varc%
hhN(dB)	-67.01	-63.55	-65.38	-75.41	9.9
vvN(dB)	-67.56	-64.02	-65.64	-75.42	10.5
hhL(dB)	-15.33	-2.38	-4.52	-10.56	24.9
vvL(dB)	-16.58	1.27	-1.28	-8.21	20.3
ppN(m/s)	-12.77	12.57	0.40	4.15	
ppT(m/s)	-100.8	99.28	3.19	32.82	
hh/vv(dB)	-NaN	40.03	17.03	26.51	886.
vh/hh(dB)	-99.00	-99.00	-99.00	-99.00	-99.
hv/vv(dB)	-NaN	-33.20	-48.37	-45.06	214.
hnjmp(dB)	-2.01	2.47	0.17	-8.48	13.6
vnjmp(dB)	-2.00	2.19	0.16	-8.42	13.9