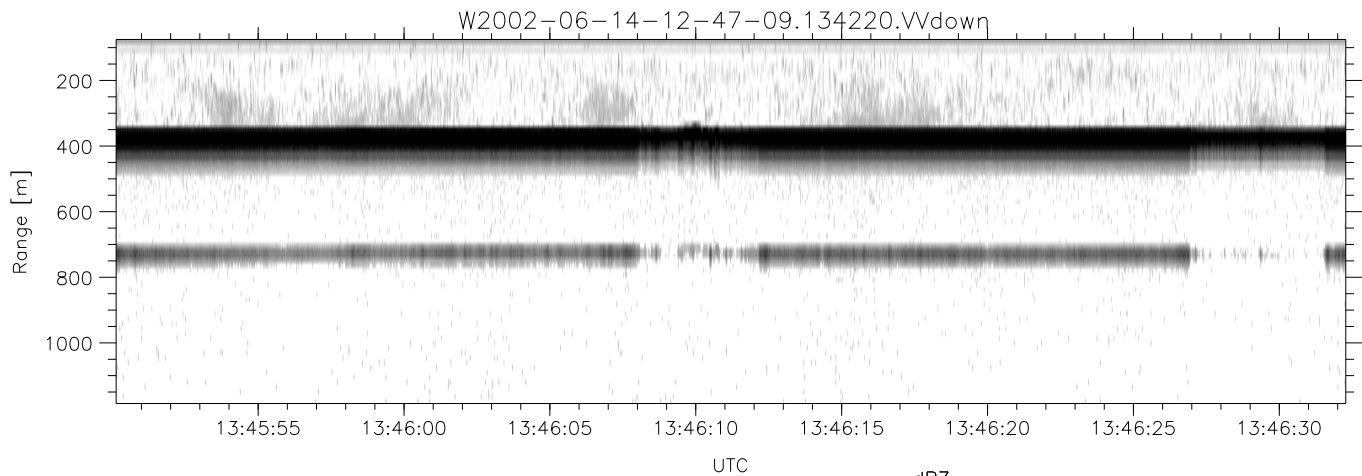
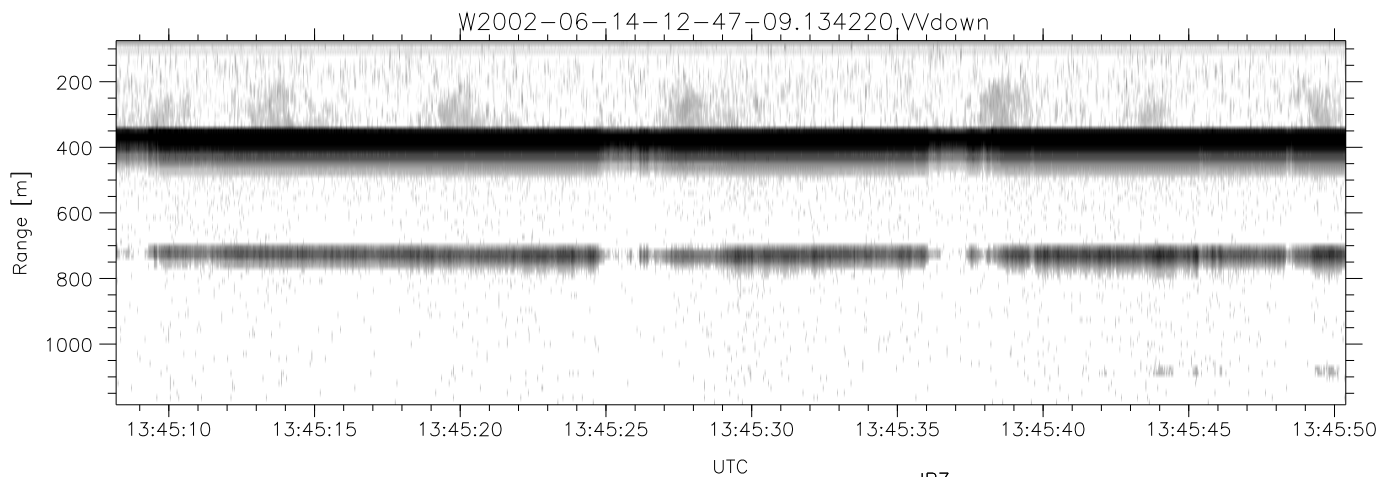
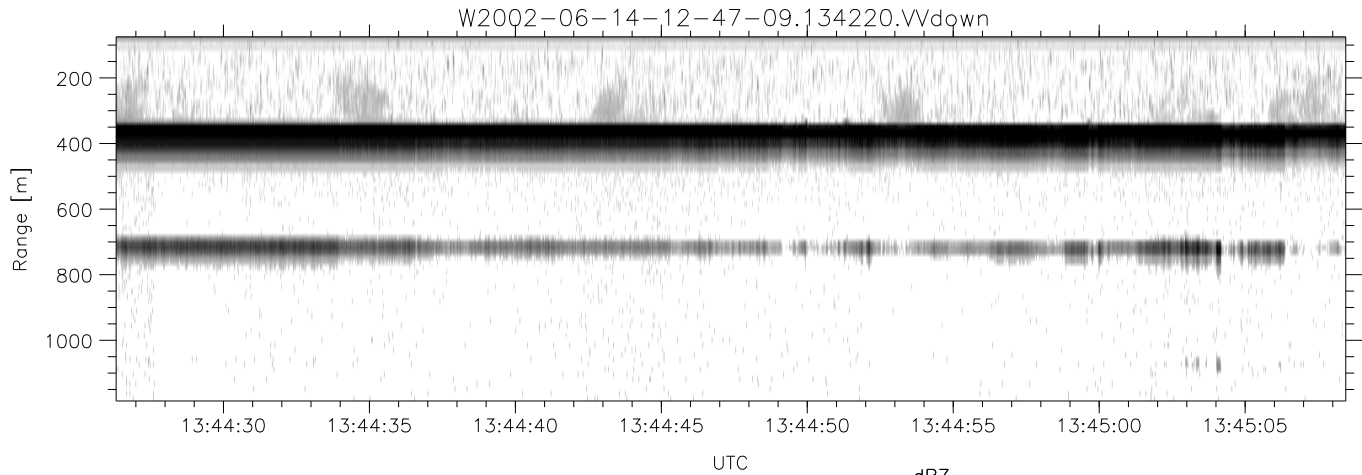


IHOP 2002 (dual-antenna config, modes 1,3,4,7) Data (cal: 49.0,50.0)

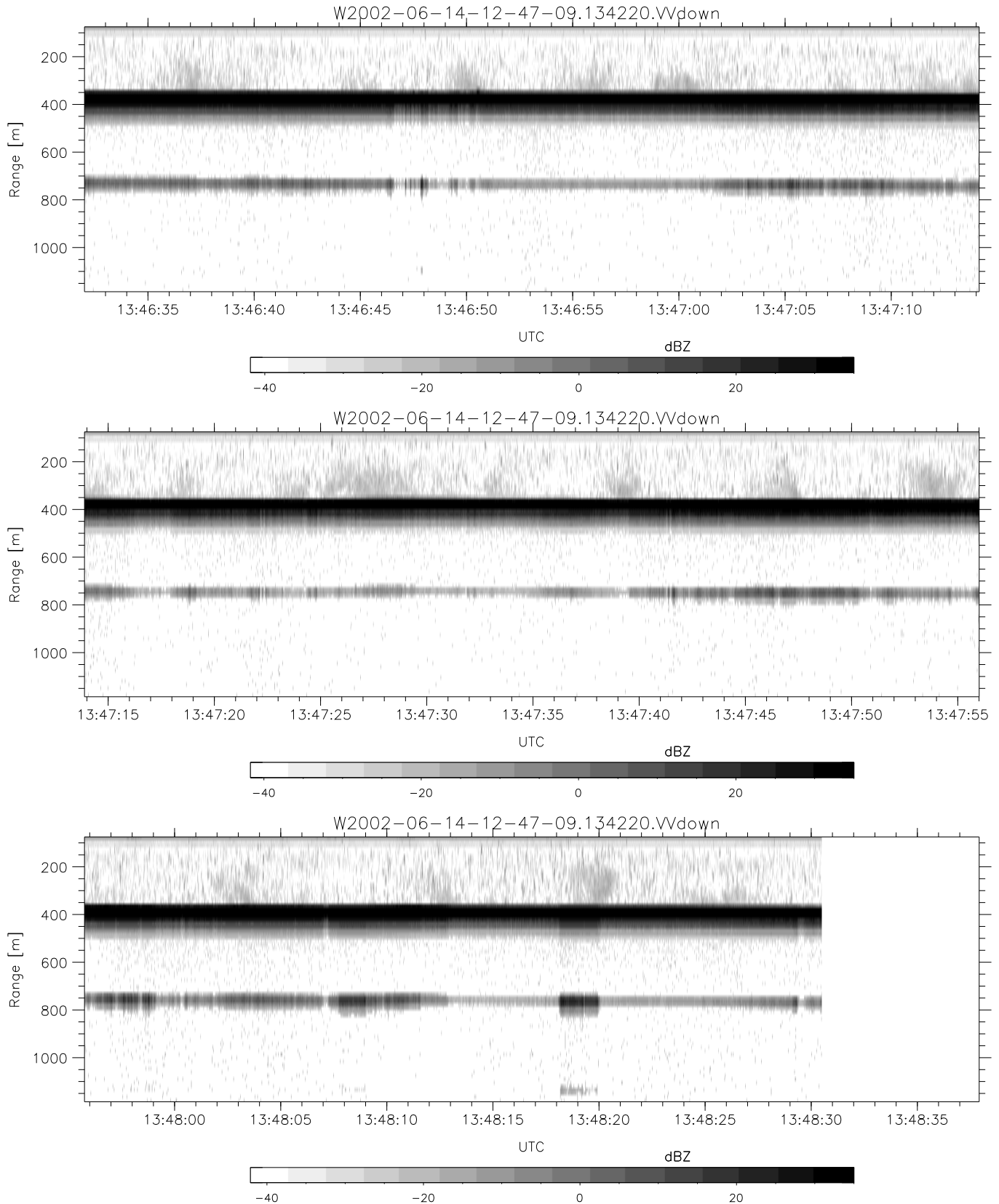
W2002-06-14-12-47-09 - PPMAG4
 IRIG:1,UTC: 12:47:04.94 to 14:14:34.13, Dur: 5250s
 TimeLngth: 5249.19s, TimeInt: 28ms (34.6pps)
 TimeCor=-13.0s, DSPDif(mn,min,mx):28,28,239
 PPS(min,max,std): 26,36,1.72
 Prof: 2869 to 184451, NumProf(t/r): 181582/12802
 ProcTime/Recs: 13:42:20-13:48:30/115218-128019
 MxACQtime: 33ms; DRate: 146.3KB/s; Flags: 0, 0, 0
 Pulse: 275ns, IFfilt: 5.0MHz; ppPol: HH HV VV
 TxPol: HHVV, PRF: 20 10 20 10 kHz
 Range: Delay 75m, Spacing 15m, Gates 75
 Ave. Pulses: 84, Rng/Prof Aspect@90m/s: 5.8

	Min	Max	Mean	Std	Varc%
hhN(dB)	-67.12	-64.10	-65.49	-75.57	9.8
vvN(dB)	-67.44	-64.12	-65.79	-75.78	10.0
hhL(dB)	-10.91	-5.01	-8.72	-17.38	13.6
vvL(dB)	-4.17	-0.36	-2.73	-12.96	9.5
ppN(m/s)	-12.38	12.64	0.03	4.12	
ppT(m/s)	-97.79	99.84	0.26	32.52	
hh/vv(dB)	-NaN	42.74	22.15	30.02	611.
vh/hh(dB)	-36.02	-29.33	-31.70	-33.83	61.3
hv/vv(dB)	-NaN	-31.17	-48.39	-45.50	194.
hnjmp(dB)	-2.15	2.00	0.17	-8.39	13.9
vnjmp(dB)	-2.01	2.59	0.15	-8.33	14.2



IHOP 2002 (dual-antenna config, modes 1,3,4,7) Data (cal: 49.0,50.0)

W2002-06-14-12-47-09 - PPMAG4	Min	Max	Mean	Std	Varc%	
IRIG:1,UTC: 12:47:04.94 to 14:14:34.13, Dur: 5250s	hhN(dB)	-67.12	-64.10	-65.49	-75.57	9.8
TimeLngth: 5249.19s, TimeInt: 28ms (34.6pps)	vvN(dB)	-67.44	-64.12	-65.79	-75.78	10.0
TimeCor=-13.0s, DSPDif(mn,min,mx):28,28,239	hhL(dB)	-10.91	-5.01	-8.72	-17.38	13.6
PPS(min,max,std): 26,36,1.72	vvL(dB)	-4.17	-0.36	-2.73	-12.96	9.5
Prof: 2869 to 184451, NumProf(t/r): 181582/12802	ppN(m/s)	-12.38	12.64	0.03	4.12	
ProcTime/Recs: 13:42:20-13:48:30/115218-128019	ppT(m/s)	-97.79	99.84	0.26	32.52	
MxACQtime: 33ms; DRate: 146.3KB/s; Flags: 0, 0, 0	hh/vv(dB)	-NaN	42.74	22.15	30.02	611.
Pulse: 275ns, IFilt: 5.0MHz; ppPol: HH HV VV	vh/hh(dB)	-36.02	-29.33	-31.70	-33.83	61.3
TxPol: HHVV, PRF: 20 10 20 10 kHz	hv/vv(dB)	-NaN	-31.17	-48.39	-45.50	194.
Range: Delay 75m, Spacing 15m, Gates 75	hnjmp(dB)	-2.15	2.00	0.17	-8.39	13.9
Ave. Pulses: 84, Rng/Prof Aspect@90m/s: 5.8	vnjmp(dB)	-2.01	2.59	0.15	-8.33	14.2



IHOP 2002 (dual-antenna config, modes 1,3,4,7) Data (cal: 49.0,50.0)

W2002-06-14-12-47-09 - PPMAG4
 IRIG:1,UTC: 12:47:04.94 to 14:14:34.13, Dur: 5250s
 TimeLngth: 5249.19s, TimeInt: 28ms (34.6pps)
 TimeCor=-13.0s, DSPDif(mn,min,mx):28,28,239
 PPS(min,max,std): 26,36,1.72
 Prof: 2869 to 184451, NumProf(t/r): 181582/12802
 ProcTime/Recs: 13:42:20-13:48:30/115218-128019
 MxACQtime: 33ms; DRate: 146.3KB/s; Flags: 0, 0, 0
 Pulse: 275ns, IFfilt: 5.0MHz; ppPol: HH HV VV
 TxPol: HHVV, PRF: 20 10 20 10 kHz
 Range: Delay 75m, Spacing 15m, Gates 75
 Ave. Pulses: 84, Rng/Prof Aspect@90m/s: 5.8

	Min	Max	Mean	Std	Varc%
hhN(dB)	-67.12	-64.10	-65.49	-75.57	9.8
vvN(dB)	-67.44	-64.12	-65.79	-75.78	10.0
hhL(dB)	-10.91	-5.01	-8.72	-17.38	13.6
vvL(dB)	-4.17	-0.36	-2.73	-12.96	9.5
ppN(m/s)	-12.38	12.64	0.03	4.12	
ppT(m/s)	-97.79	99.84	0.26	32.52	
hh/vv(dB)	-NaN	42.74	22.15	30.02	611.
vh/hh(dB)	-36.02	-29.33	-31.70	-33.83	61.3
hv/vv(dB)	-NaN	-31.17	-48.39	-45.50	194.
hnjmp(dB)	-2.15	2.00	0.17	-8.39	13.9
vnjmp(dB)	-2.01	2.59	0.15	-8.33	14.2