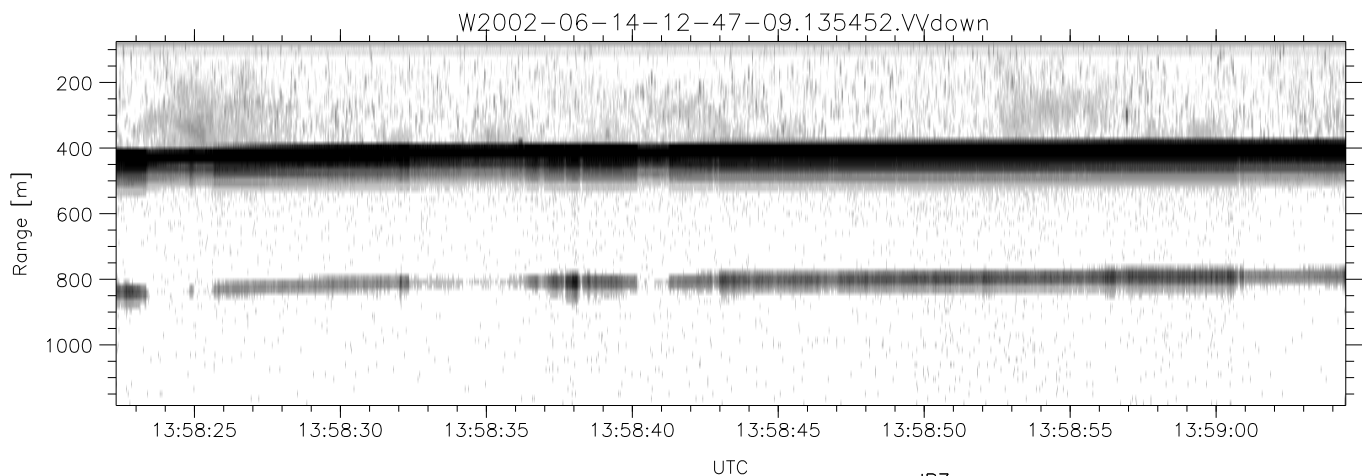
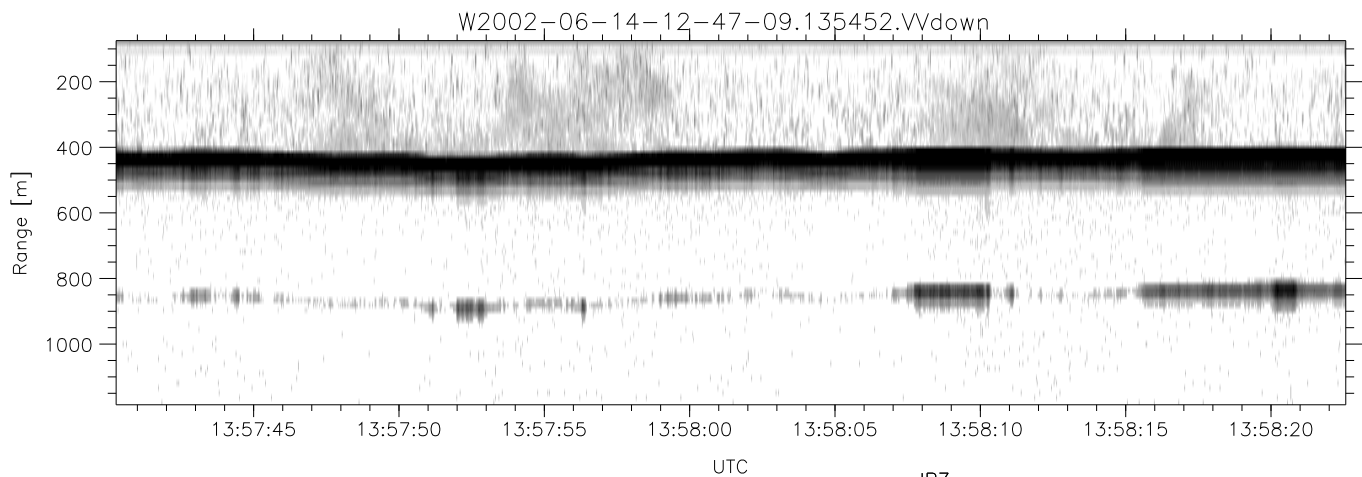
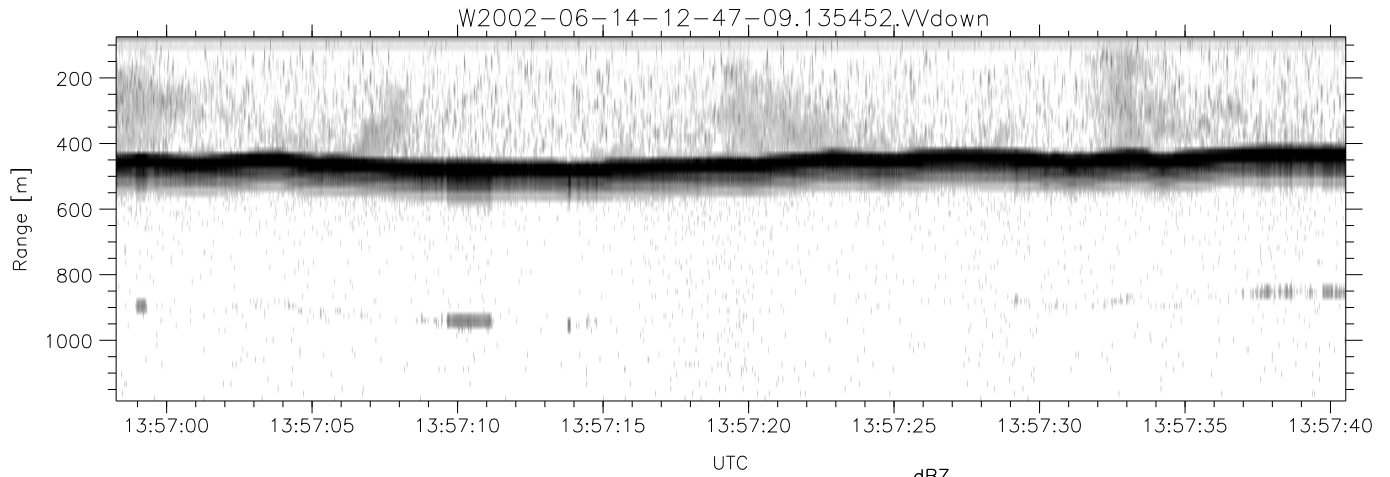


IHOP 2002 (dual-antenna config, modes 1,3,4,7) Data (cal: 49.0,50.0)

W2002-06-14-12-47-09 - PPMAG4
 IRIG:1,UTC: 12:47:04.94 to 14:14:34.13, Dur: 5250s
 TimeLngth: 5249.19s, TimeInt: 28ms (34.6pps)
 TimeCor=-13.0s, DSPDif(mn,min,mx):28,28,251
 PPS(min,max,std): 27,36,1.68
 Prof: 2869 to 184451, NumProf(t/r): 181582/12802
 ProcTime/Recs: 13:54:52-14:01:02/140822-153623
 MxACQtime: 33ms; DRate: 146.3KB/s; Flags: 0, 0, 0
 Pulse: 275ns, IFilt: 5.0MHz; ppPol: HH HV VV
 TxPol: HHVV, PRF: 20 10 20 10 kHz
 Range: Delay 75m, Spacing 15m, Gates 75
 Ave. Pulses: 84, Rng/Prof Aspect@90m/s: 5.8

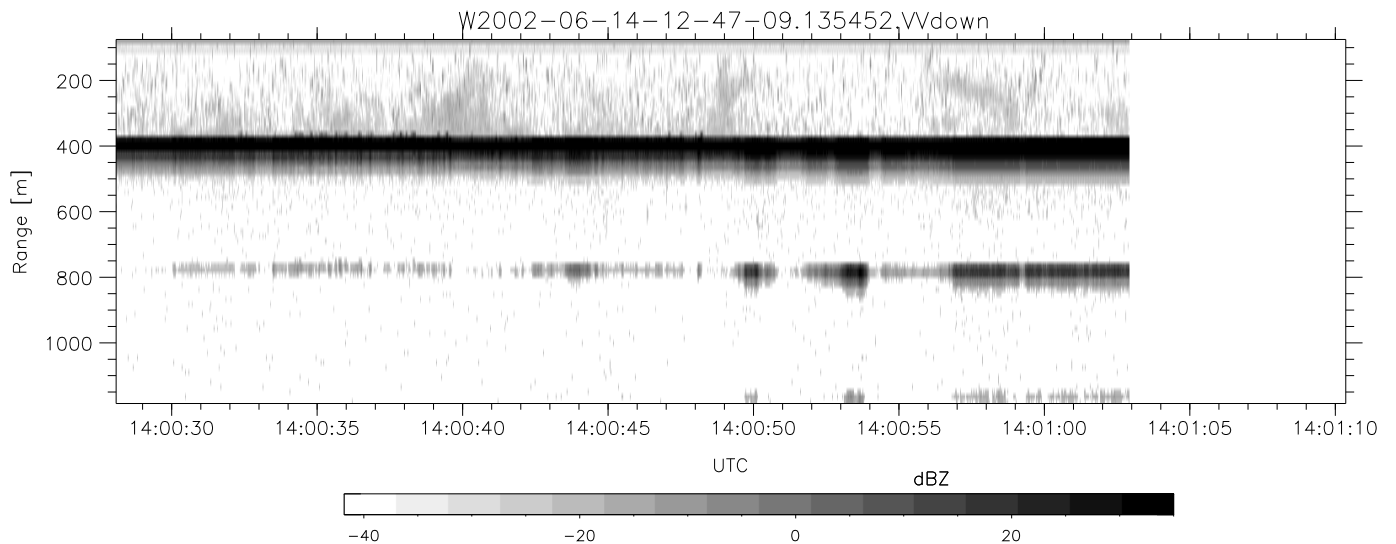
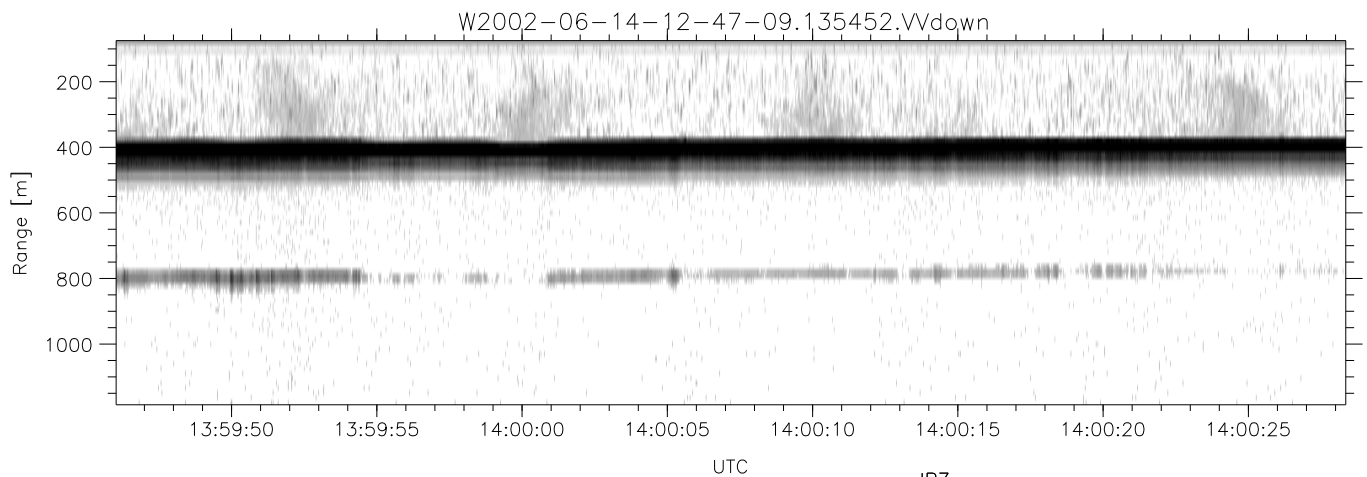
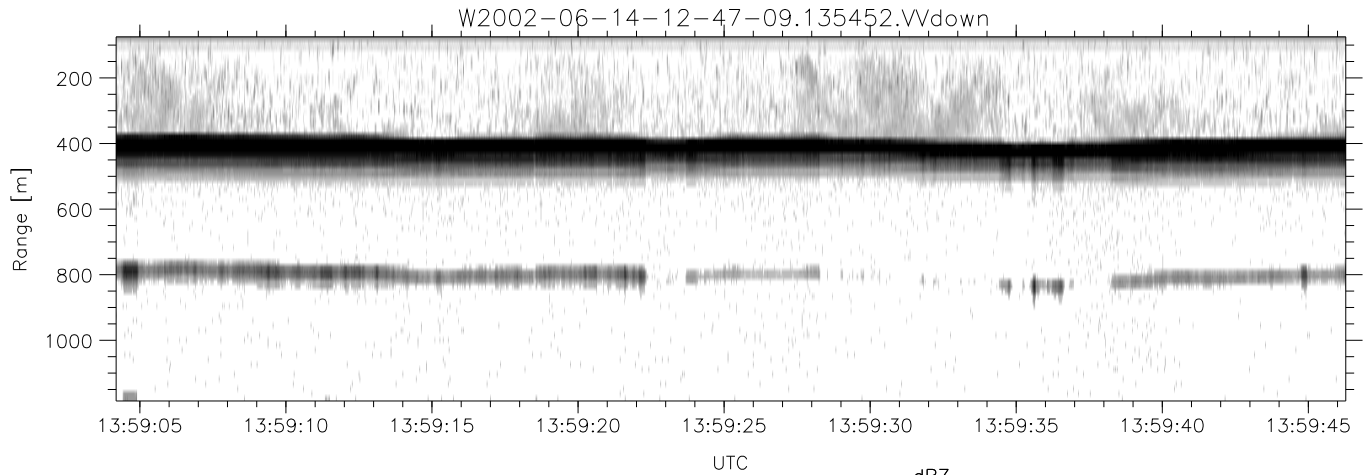
| | Min | Max | Mean | Std | Varc% |
|-----------|--------|--------|--------|--------|-------|
| hhN(dB) | -67.22 | -63.81 | -65.51 | -75.58 | 9.9 |
| vvN(dB) | -67.55 | -64.23 | -65.78 | -75.72 | 10.1 |
| hhL(dB) | -12.10 | -2.57 | -8.60 | -13.57 | 31.8 |
| vvL(dB) | -7.61 | 0.74 | -2.73 | -11.29 | 13.9 |
| ppN(m/s) | -12.69 | 12.72 | 0.11 | 4.13 | |
| ppT(m/s) | -100.2 | 100.51 | 0.88 | 32.62 | |
| hh/vv(dB) | -NaN | 33.66 | 19.68 | 28.10 | 695. |
| vh/hh(dB) | -99.00 | -99.00 | -99.00 | -99.00 | -99. |
| hv/vv(dB) | -NaN | -33.27 | -49.82 | -45.89 | 247. |
| hnjmp(dB) | -2.07 | 2.53 | 0.16 | -8.43 | 13.8 |
| vnjmp(dB) | -2.15 | 2.36 | 0.16 | -8.33 | 14.2 |



IHOP 2002 (dual-antenna config, modes 1,3,4,7) Data (cal: 49.0,50.0)

W2002-06-14-12-47-09 - PPMAG4
 IRIG:1,UTC: 12:47:04.94 to 14:14:34.13, Dur: 5250s
 TimeLngth: 5249.19s, TimeInt: 28ms (34.6pps)
 TimeCor=-13.0s, DSPDif(mn,min,mx):28,28,251
 PPS(min,max,std): 27,36,1.68
 Prof: 2869 to 184451, NumProf(t/r): 181582/12802
 ProcTime/Recs: 13:54:52-14:01:02/140822-153623
 MxACQtime: 33ms; DRate: 146.3KB/s; Flags: 0, 0, 0
 Pulse: 275ns, IFfilt: 5.0MHz; ppPol: HH HV VV
 TxPol: HHVV, PRF: 20 10 20 10 kHz
 Range: Delay 75m, Spacing 15m, Gates 75
 Ave. Pulses: 84, Rng/Prof Aspect@90m/s: 5.8

| | Min | Max | Mean | Std | Varc% |
|-----------|--------|--------|--------|--------|-------|
| hhN(dB) | -67.22 | -63.81 | -65.51 | -75.58 | 9.9 |
| vvN(dB) | -67.55 | -64.23 | -65.78 | -75.72 | 10.1 |
| hhL(dB) | -12.10 | -2.57 | -8.60 | -13.57 | 31.8 |
| vvL(dB) | -7.61 | 0.74 | -2.73 | -11.29 | 13.9 |
| ppN(m/s) | -12.69 | 12.72 | 0.11 | 4.13 | |
| ppT(m/s) | -100.2 | 100.51 | 0.88 | 32.62 | |
| hh/vv(dB) | -NaN | 33.66 | 19.68 | 28.10 | 695. |
| vh/hh(dB) | -99.00 | -99.00 | -99.00 | -99.00 | -99. |
| hv/vv(dB) | -NaN | -33.27 | -49.82 | -45.89 | 247. |
| hnjmp(dB) | -2.07 | 2.53 | 0.16 | -8.43 | 13.8 |
| vnjmp(dB) | -2.15 | 2.36 | 0.16 | -8.33 | 14.2 |



IHOP 2002 (dual-antenna config, modes 1,3,4,7) Data (cal: 49.0,50.0)

W2002-06-14-12-47-09 - PPMAG4
 IRIG:1,UTC: 12:47:04.94 to 14:14:34.13, Dur: 5250s
 TimeLngth: 5249.19s, TimeInt: 28ms (34.6pps)
 TimeCor=-13.0s, DSPDif(mn,min,mx):28,28,251
 PPS(min,max,std): 27,36,1.68
 Prof: 2869 to 184451, NumProf(t/r): 181582/12802
 ProcTime/Recs: 13:54:52-14:01:02/140822-153623
 MxACQtime: 33ms; DRate: 146.3KB/s; Flags: 0, 0, 0
 Pulse: 275ns, IFilt: 5.0MHz; ppPol: HH HV VV
 TxPol: HHVV, PRF: 20 10 20 10 kHz
 Range: Delay 75m, Spacing 15m, Gates 75
 Ave. Pulses: 84, Rng/Prof Aspect@90m/s: 5.8

| | Min | Max | Mean | Std | Varc% |
|-----------|--------|--------|--------|--------|-------|
| hhN(dB) | -67.22 | -63.81 | -65.51 | -75.58 | 9.9 |
| vvN(dB) | -67.55 | -64.23 | -65.78 | -75.72 | 10.1 |
| hhL(dB) | -12.10 | -2.57 | -8.60 | -13.57 | 31.8 |
| vvL(dB) | -7.61 | 0.74 | -2.73 | -11.29 | 13.9 |
| ppN(m/s) | -12.69 | 12.72 | 0.11 | 4.13 | |
| ppT(m/s) | -100.2 | 100.51 | 0.88 | 32.62 | |
| hh/vv(dB) | -NaN | 33.66 | 19.68 | 28.10 | 695. |
| vh/hh(dB) | -99.00 | -99.00 | -99.00 | -99.00 | -99. |
| hv/vv(dB) | -NaN | -33.27 | -49.82 | -45.89 | 247. |
| hnjmp(dB) | -2.07 | 2.53 | 0.16 | -8.43 | 13.8 |
| vnjmp(dB) | -2.15 | 2.36 | 0.16 | -8.33 | 14.2 |