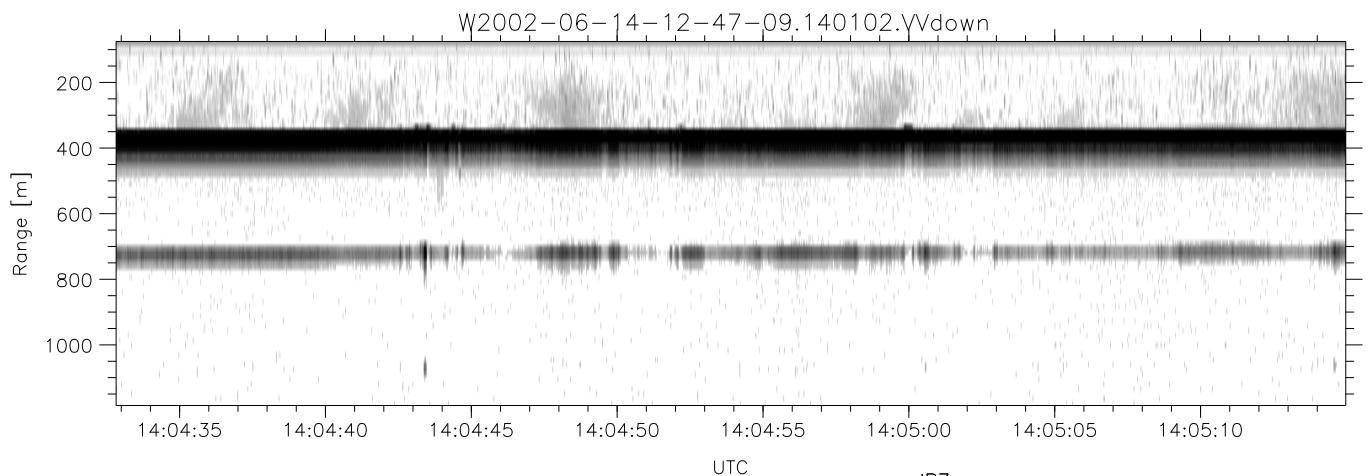
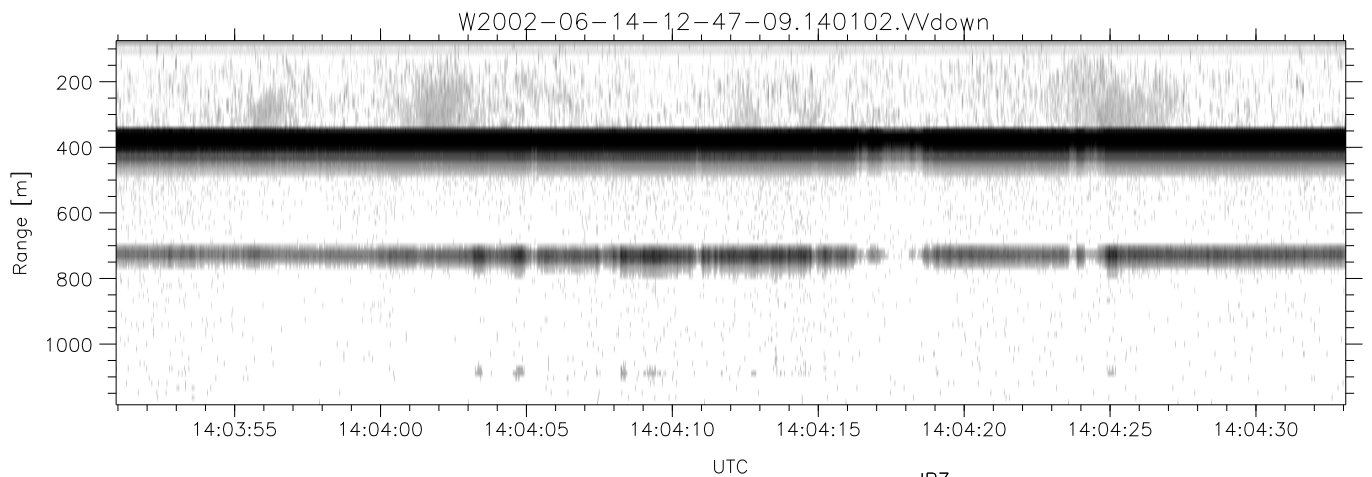
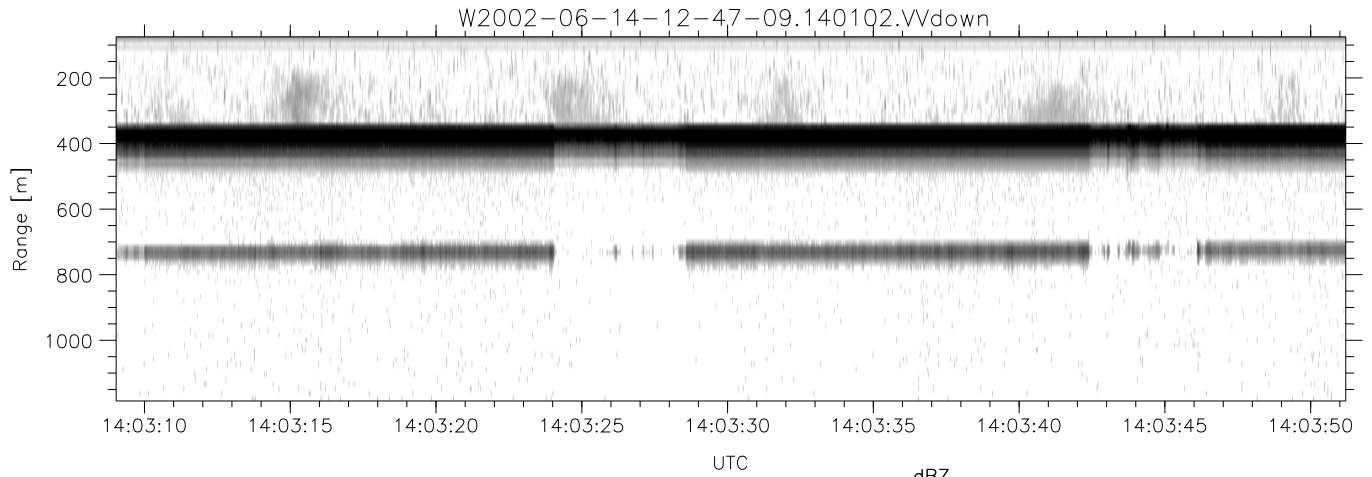


IHOP 2002 (dual-antenna config, modes 1,3,4,7) Data (cal: 49.0,50.0)

W2002-06-14-12-47-09 - PPMAG4
 IRIG:1,UTC: 12:47:04.94 to 14:14:34.13, Dur: 5250s
 TimeLngth: 5249.19s, TimeInt: 28ms (34.6pps)
 TimeCor=-13.0s, DSPDif(mn,min,mx):28,28,243
 PPS(min,max,std): 25,36,1.74
 Prof: 2869 to 184451, NumProf(t/r): 181582/12802
 ProcTime/Recs: 14:01:02-14:07:13/153624-166425
 MxAcQtime: 33ms; DRate: 146.3KB/s; Flags: 0, 0, 0
 Pulse: 275ns, IFfilt: 5.0MHz; ppPol: HH HV VV
 TxPol: HHVV, PRF: 20 10 20 10 kHz
 Range: Delay 75m, Spacing 15m, Gates 75
 Ave. Pulses: 84, Rng/Prof Aspect@90m/s: 5.8

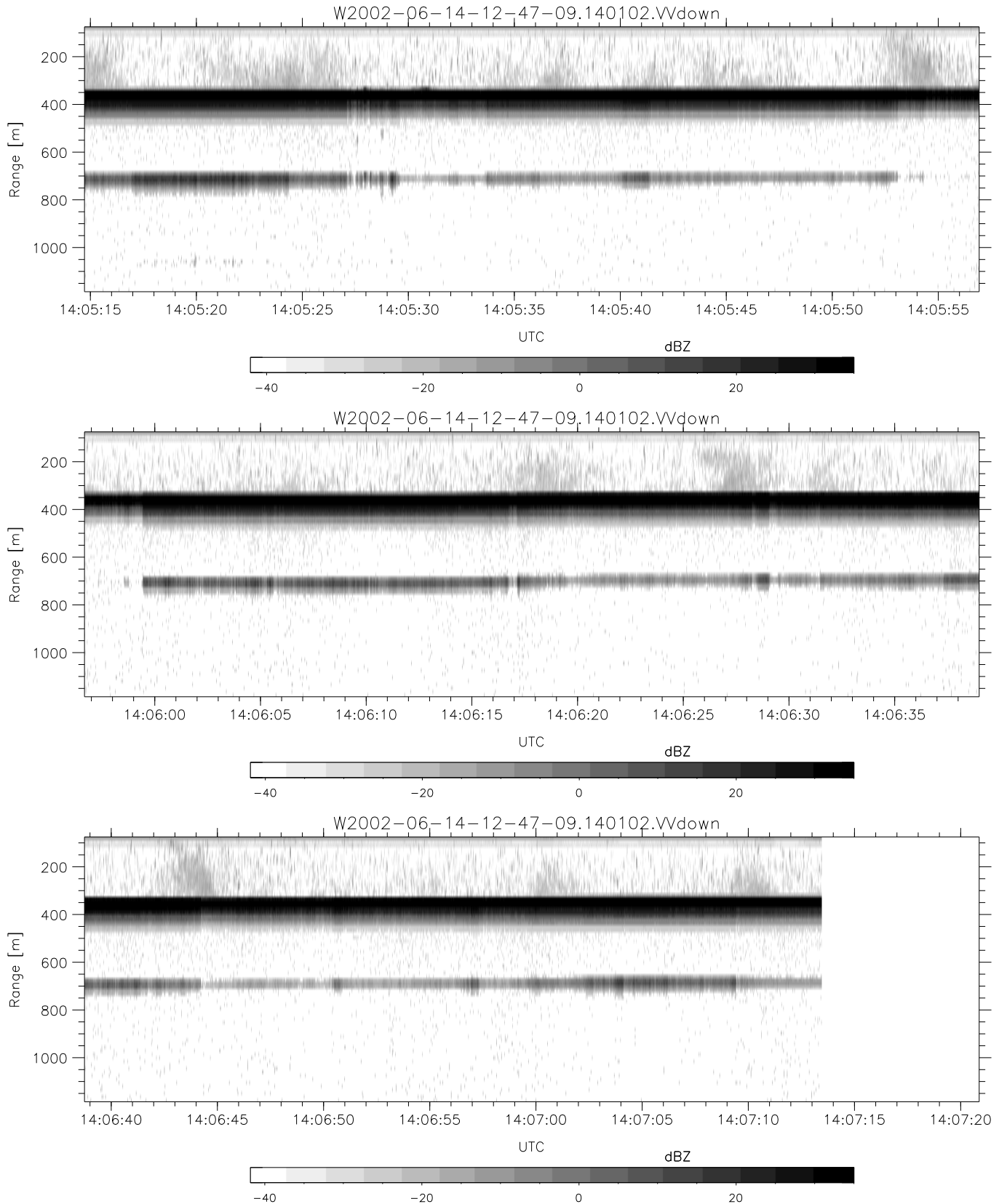
	Min	Max	Mean	Std	Varc%
hhN(dB)	-67.64	-64.09	-65.50	-75.57	9.8
vvN(dB)	-67.67	-64.03	-65.80	-75.78	10.0
hhL(dB)	-11.39	-3.97	-8.51	-16.73	15.1
vvL(dB)	-4.50	-0.04	-2.89	-12.69	10.5
ppN(m/s)	-12.10	12.38	0.05	4.15	
ppT(m/s)	-95.62	97.80	0.37	32.75	
hh/vv(dB)	-NaN	41.90	20.25	30.76	1124
vh/hh(dB)	-99.00	-99.00	-99.00	-99.00	-99.
hv/vv(dB)	-NaN	-32.55	-48.57	-45.76	190.
hnjmp(dB)	-2.17	2.26	0.16	-8.41	13.9
vnjmp(dB)	-2.10	2.20	0.16	-8.40	13.9



IHOP 2002 (dual-antenna config, modes 1,3,4,7) Data (cal: 49.0,50.0)

W2002-06-14-12-47-09 - PPMAG4
 IRIG:1,UTC: 12:47:04.94 to 14:14:34.13, Dur: 5250s
 TimeLngth: 5249.19s, TimeInt: 28ms (34.6pps)
 TimeCor=-13.0s, DSPDif(mn,min,mx):28,28,243
 PPS(min,max,std): 25,36,1.74
 Prof: 2869 to 184451, NumProf(t/r): 181582/12802
 ProcTime/Recs: 14:01:02-14:07:13/153624-166425
 MxACQtime: 33ms; DRate: 146.3KB/s; Flags: 0, 0, 0
 Pulse: 275ns, IFfilt: 5.0MHz; ppPol: HH HV VV
 TxPol: HHVV, PRF: 20 10 20 10 kHz
 Range: Delay 75m, Spacing 15m, Gates 75
 Ave. Pulses: 84, Rng/Prof Aspect@90m/s: 5.8

	Min	Max	Mean	Std	Varc%
hhN(dB)	-67.64	-64.09	-65.50	-75.57	9.8
vvN(dB)	-67.67	-64.03	-65.80	-75.78	10.0
hhL(dB)	-11.39	-3.97	-8.51	-16.73	15.1
vvL(dB)	-4.50	-0.04	-2.89	-12.69	10.5
ppN(m/s)	-12.10	12.38	0.05	4.15	
ppT(m/s)	-95.62	97.80	0.37	32.75	
hh/vv(dB)	-NaN	41.90	20.25	30.76	1124
vh/hh(dB)	-99.00	-99.00	-99.00	-99.00	-99.
hv/vv(dB)	-NaN	-32.55	-48.57	-45.76	190.
hnjmp(dB)	-2.17	2.26	0.16	-8.41	13.9
vnjmp(dB)	-2.10	2.20	0.16	-8.40	13.9



IHOP 2002 (dual-antenna config, modes 1,3,4,7) Data (cal: 49.0,50.0)

W2002-06-14-12-47-09 - PPMAG4
 IRIG:1,UTC: 12:47:04.94 to 14:14:34.13, Dur: 5250s
 TimeLngth: 5249.19s, TimeInt: 28ms (34.6pps)
 TimeCor=-13.0s, DSPDif(mn,min,mx):28,28,243
 PPS(min,max,std): 25,36,1.74
 Prof: 2869 to 184451, NumProf(t/r): 181582/12802
 ProcTime/Recs: 14:01:02-14:07:13/153624-166425
 MxAcQtime: 33ms; DRate: 146.3KB/s; Flags: 0, 0, 0
 Pulse: 275ns, IFilt: 5.0MHz; ppPol: HH HV VV
 TxPol: HHVV, PRF: 20 10 20 10 kHz
 Range: Delay 75m, Spacing 15m, Gates 75
 Ave. Pulses: 84, Rng/Prof Aspect@90m/s: 5.8

	Min	Max	Mean	Std	Varc%
hhN(dB)	-67.64	-64.09	-65.50	-75.57	9.8
vvN(dB)	-67.67	-64.03	-65.80	-75.78	10.0
hhL(dB)	-11.39	-3.97	-8.51	-16.73	15.1
vvL(dB)	-4.50	-0.04	-2.89	-12.69	10.5
ppN(m/s)	-12.10	12.38	0.05	4.15	
ppT(m/s)	-95.62	97.80	0.37	32.75	
hh/vv(dB)	-NaN	41.90	20.25	30.76	1124
vh/hh(dB)	-99.00	-99.00	-99.00	-99.00	-99.
hv/vv(dB)	-NaN	-32.55	-48.57	-45.76	190.
hnjmp(dB)	-2.17	2.26	0.16	-8.41	13.9
vnjmp(dB)	-2.10	2.20	0.16	-8.40	13.9