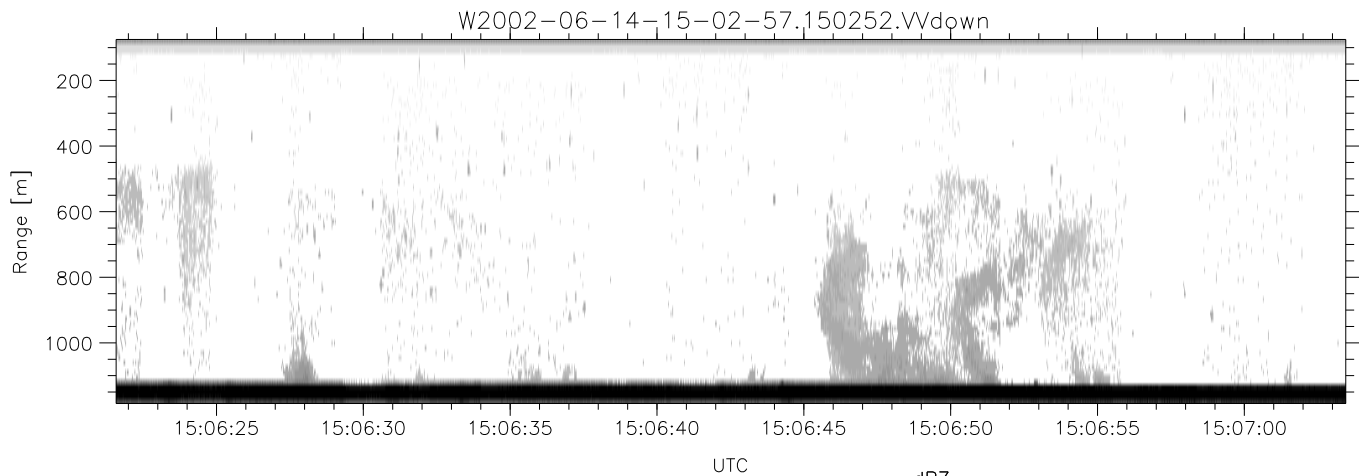
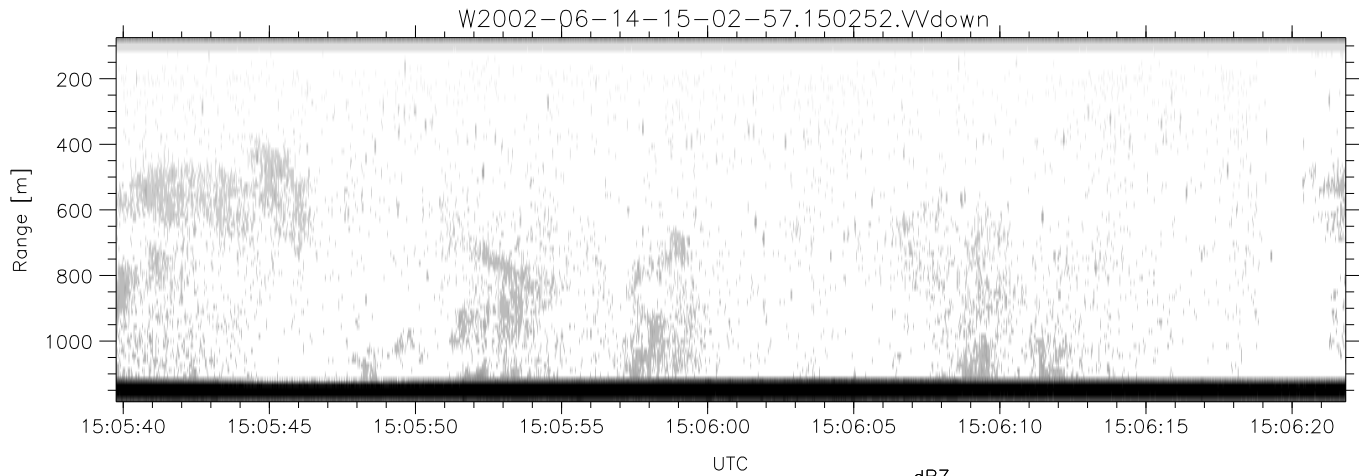
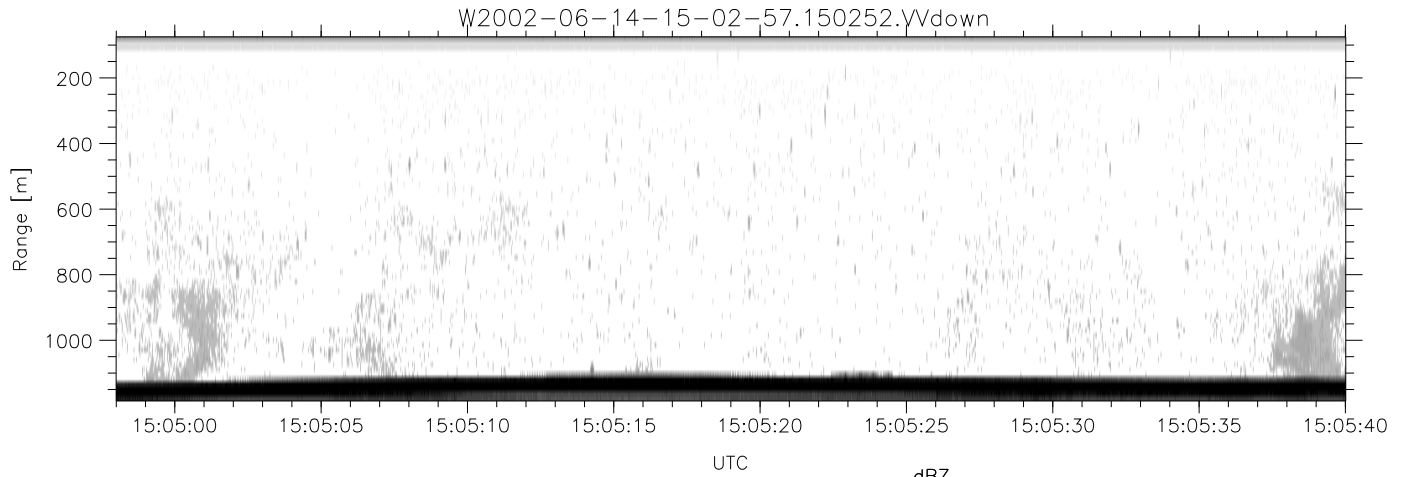


IHOP 2002 (dual-antenna config, modes 1,3,4,7) Data (cal: 49.0,50.0)

W2002-06-14-15-02-57 - PPMAG4  
 IRIG:1,UTC: 15:02:52.11 to 17:39:16.80, Dur: 9384s  
 TimeLngth: 9384.69s, TimeInt: 28ms (34.7pps)  
 TimeCor=-13.0s, DSPDif(mn,min,mx):28,28,329  
 PPS(min,max,std): 22,36,1.86  
 Prof: 394 to 326207, NumProf(t/r): 325813/12802  
 ProcTime/Recs: 15:02:52-15:08:59/0-12801  
 MxACQtime: 33ms; DRate: 146.9KB/s; Flags: 0, 0, 0  
 Pulse: 275ns, IFilt: 5.0MHz; ppPol: HH HV VV  
 TxPol: HHVV, PRF: 20 10 20 10 kHz  
 Range: Delay 75m, Spacing 15m, Gates 75  
 Ave. Pulses: 84, Rng/Prof Aspect@90m/s: 5.8

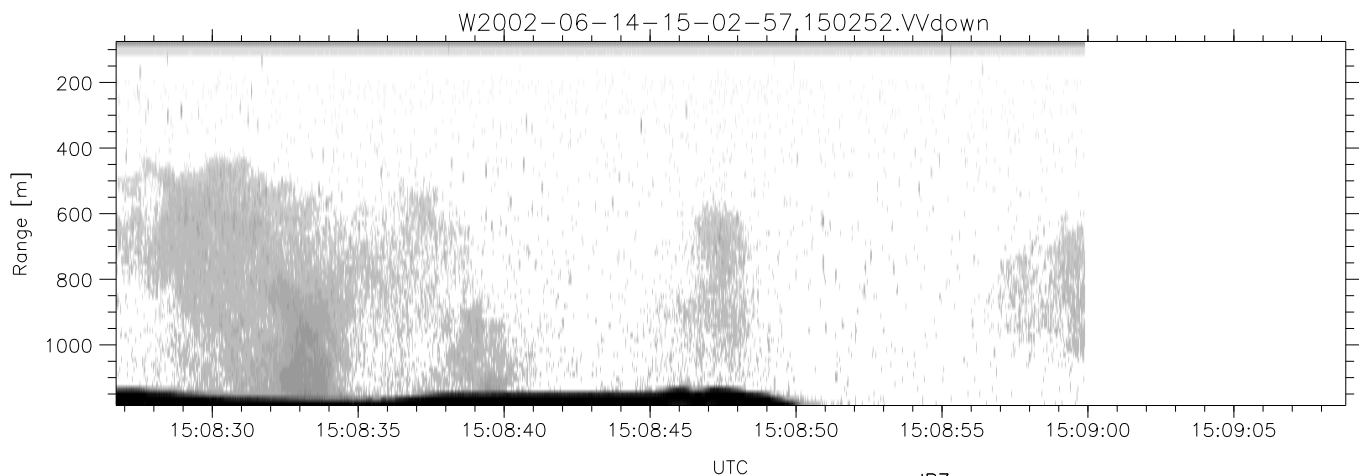
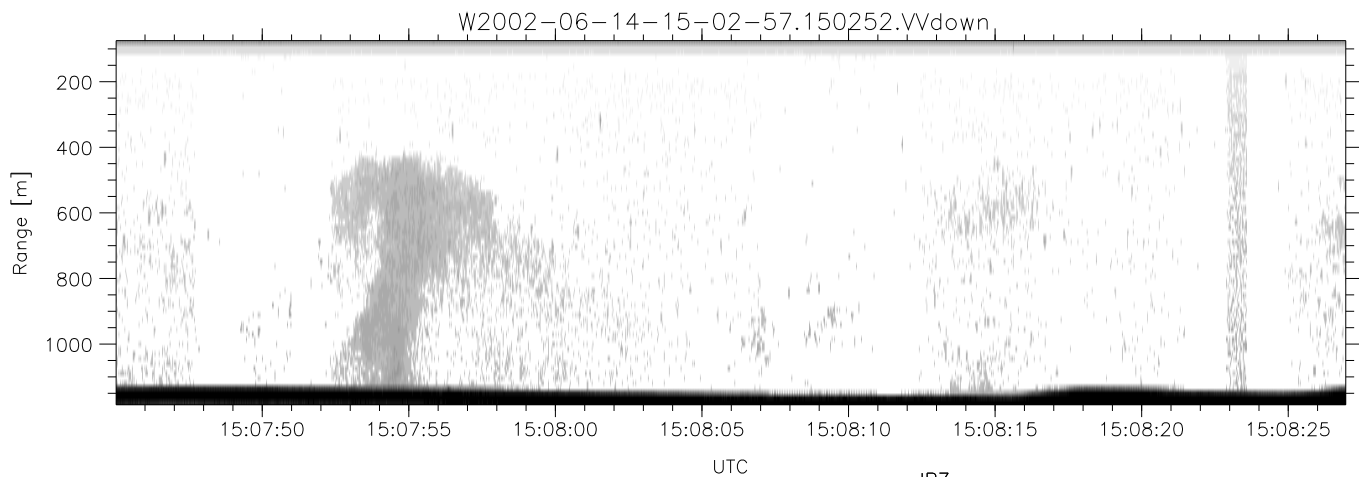
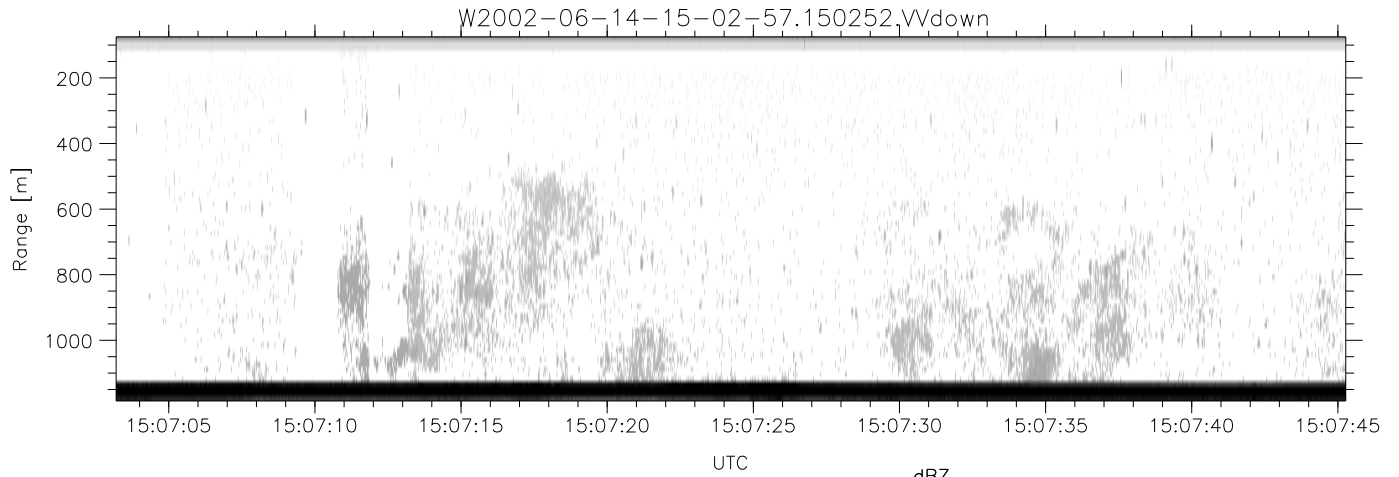
	Min	Max	Mean	Std	Varc%
hhN(dB)	-67.02	-61.64	-65.12	-72.10	20.0
vvN(dB)	-67.24	-61.83	-65.42	-72.25	20.7
hhL(dB)	-8.38	-6.12	-7.45	-18.50	7.8
vvL(dB)	-0.90	0.37	-0.22	-12.07	6.5
ppN(m/s)	-12.29	12.82	0.39	4.22	
ppT(m/s)	-97.10	101.31	3.09	33.36	
hh/vv(dB)	-NaN	51.32	31.75	42.48	1185
vh/hh(dB)	-99.00	-99.00	-99.00	-99.00	-99.
hv/vv(dB)	-NaN	-28.92	-52.63	-42.54	1020
hnjmp(dB)	-2.92	2.12	-0.07	-8.69	13.7
vnjmp(dB)	-3.23	2.18	-0.06	-8.67	13.8



IHOP 2002 (dual-antenna config, modes 1,3,4,7) Data (cal: 49.0,50.0)

W2002-06-14-15-02-57 - PPMAG4  
 IRIG:1,UTC: 15:02:52.11 to 17:39:16.80, Dur: 9384s  
 TimeLngth: 9384.69s, TimeInt: 28ms (34.7pps)  
 TimeCor=-13.0s, DSPDif(mn,min,mx):28,28,329  
 PPS(min,max,std): 22,36,1.86  
 Prof: 394 to 326207, NumProf(t/r): 325813/12802  
 ProcTime/Recs: 15:02:52-15:08:59/0-12801  
 MxACQtime: 33ms; DRate: 146.9KB/s; Flags: 0, 0, 0  
 Pulse: 275ns, IFfilt: 5.0MHz; ppPol: HH HV VV  
 TxPol: HHVV, PRF: 20 10 20 10 kHz  
 Range: Delay 75m, Spacing 15m, Gates 75  
 Ave. Pulses: 84, Rng/Prof Aspect@90m/s: 5.8

	Min	Max	Mean	Std	Varc%
hhN(dB)	-67.02	-61.64	-65.12	-72.10	20.0
vvN(dB)	-67.24	-61.83	-65.42	-72.25	20.7
hhL(dB)	-8.38	-6.12	-7.45	-18.50	7.8
vvL(dB)	-0.90	0.37	-0.22	-12.07	6.5
ppN(m/s)	-12.29	12.82	0.39	4.22	
ppT(m/s)	-97.10	101.31	3.09	33.36	
hh/vv(dB)	-NaN	51.32	31.75	42.48	1185
vh/hh(dB)	-99.00	-99.00	-99.00	-99.00	-99.
hv/vv(dB)	-NaN	-28.92	-52.63	-42.54	1020
hnjmp(dB)	-2.92	2.12	-0.07	-8.69	13.7
vnjmp(dB)	-3.23	2.18	-0.06	-8.67	13.8



IHOP 2002 (dual-antenna config, modes 1,3,4,7) Data (cal: 49.0,50.0)

W2002-06-14-15-02-57 - PPMAG4  
 IRIG:1,UTC: 15:02:52.11 to 17:39:16.80, Dur: 9384s  
 TimeLngth: 9384.69s, TimeInt: 28ms (34.7pps)  
 TimeCor=-13.0s, DSPDif(mn,min,mx):28,28,329  
 PPS(min,max,std): 22,36,1.86  
 Prof: 394 to 326207, NumProf(t/r): 325813/12802  
 ProcTime/Recs: 15:02:52-15:08:59/0-12801  
 MxACQtime: 33ms; DRate: 146.9KB/s; Flags: 0, 0, 0  
 Pulse: 275ns, IFfilt: 5.0MHz; ppPol: HH HV VV  
 TxPol: HHVV, PRF: 20 10 20 10 kHz  
 Range: Delay 75m, Spacing 15m, Gates 75  
 Ave. Pulses: 84, Rng/Prof Aspect@90m/s: 5.8

	Min	Max	Mean	Std	Varc%
hhN(dB)	-67.02	-61.64	-65.12	-72.10	20.0
vvN(dB)	-67.24	-61.83	-65.42	-72.25	20.7
hhL(dB)	-8.38	-6.12	-7.45	-18.50	7.8
vvL(dB)	-0.90	0.37	-0.22	-12.07	6.5
ppN(m/s)	-12.29	12.82	0.39	4.22	
ppT(m/s)	-97.10	101.31	3.09	33.36	
hh/vv(dB)	-NaN	51.32	31.75	42.48	1185
vh/hh(dB)	-99.00	-99.00	-99.00	-99.00	-99.
hv/vv(dB)	-NaN	-28.92	-52.63	-42.54	1020
hnjmp(dB)	-2.92	2.12	-0.07	-8.69	13.7
vnjmp(dB)	-3.23	2.18	-0.06	-8.67	13.8