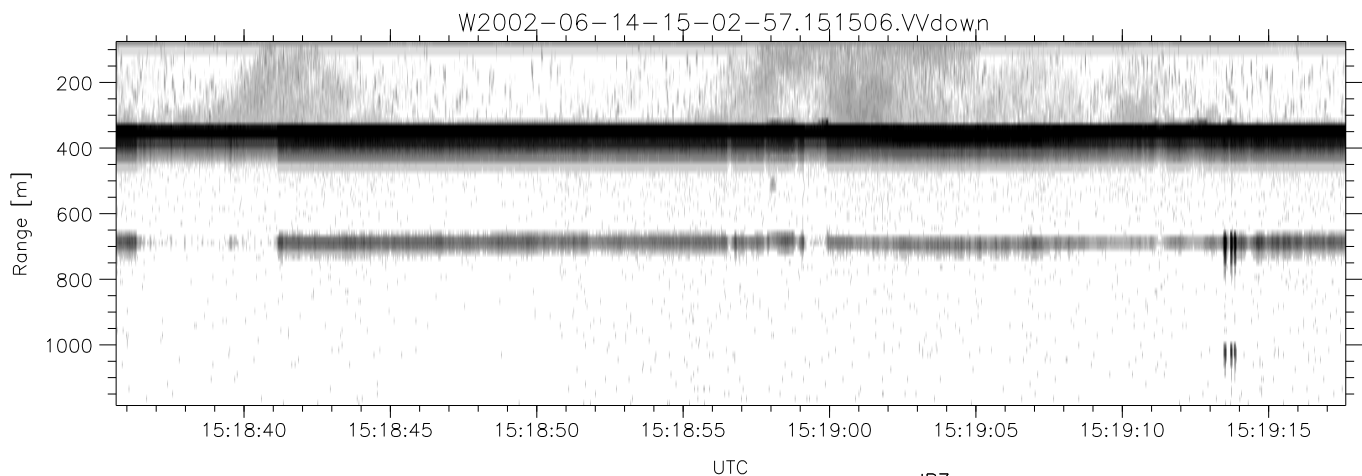
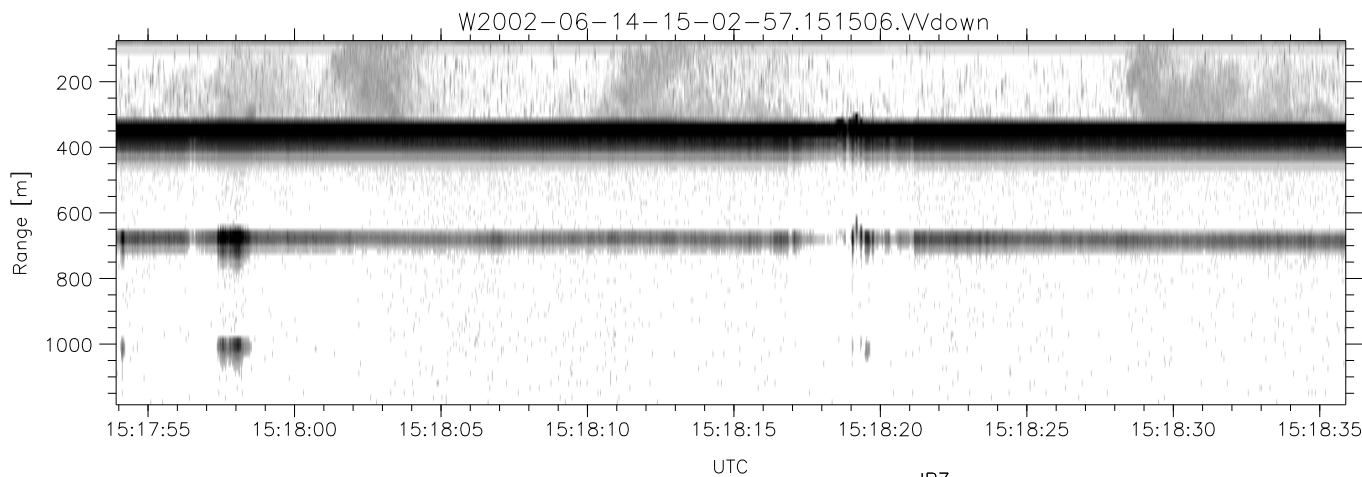
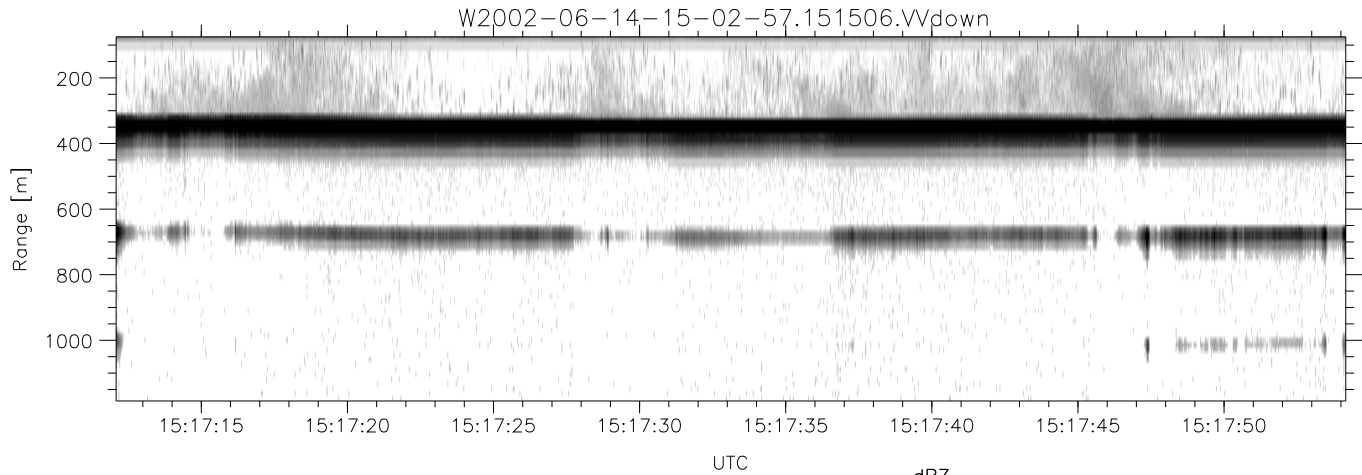


IHOP 2002 (dual-antenna config, modes 1,3,4,7) Data (cal: 49.0,50.0)

W2002-06-14-15-02-57 - PPMAG4  
 IRIG:1,UTC: 15:02:52.11 to 17:39:16.80, Dur: 9384s  
 TimeLngth: 9384.69s, TimeInt: 28ms (34.7pps)  
 TimeCor=-13.0s, DSPDif(mn,min,mx):28,28,246  
 PPS(min,max,std): 28,36,1.69  
 Prof: 394 to 326207, NumProf(t/r): 325813/12802  
 ProcTime/Recs: 15:15:06-15:21:13/25604-38405  
 MxACQtime: 33ms; DRate: 146.9KB/s; Flags: 0, 0, 0  
 Pulse: 275ns, IFfilt: 5.0MHz; ppPol: HH HV VV  
 TxPol: HHVV, PRF: 20 10 20 10 kHz  
 Range: Delay 75m, Spacing 15m, Gates 75  
 Ave. Pulses: 84, Rng/Prof Aspect@90m/s: 5.8

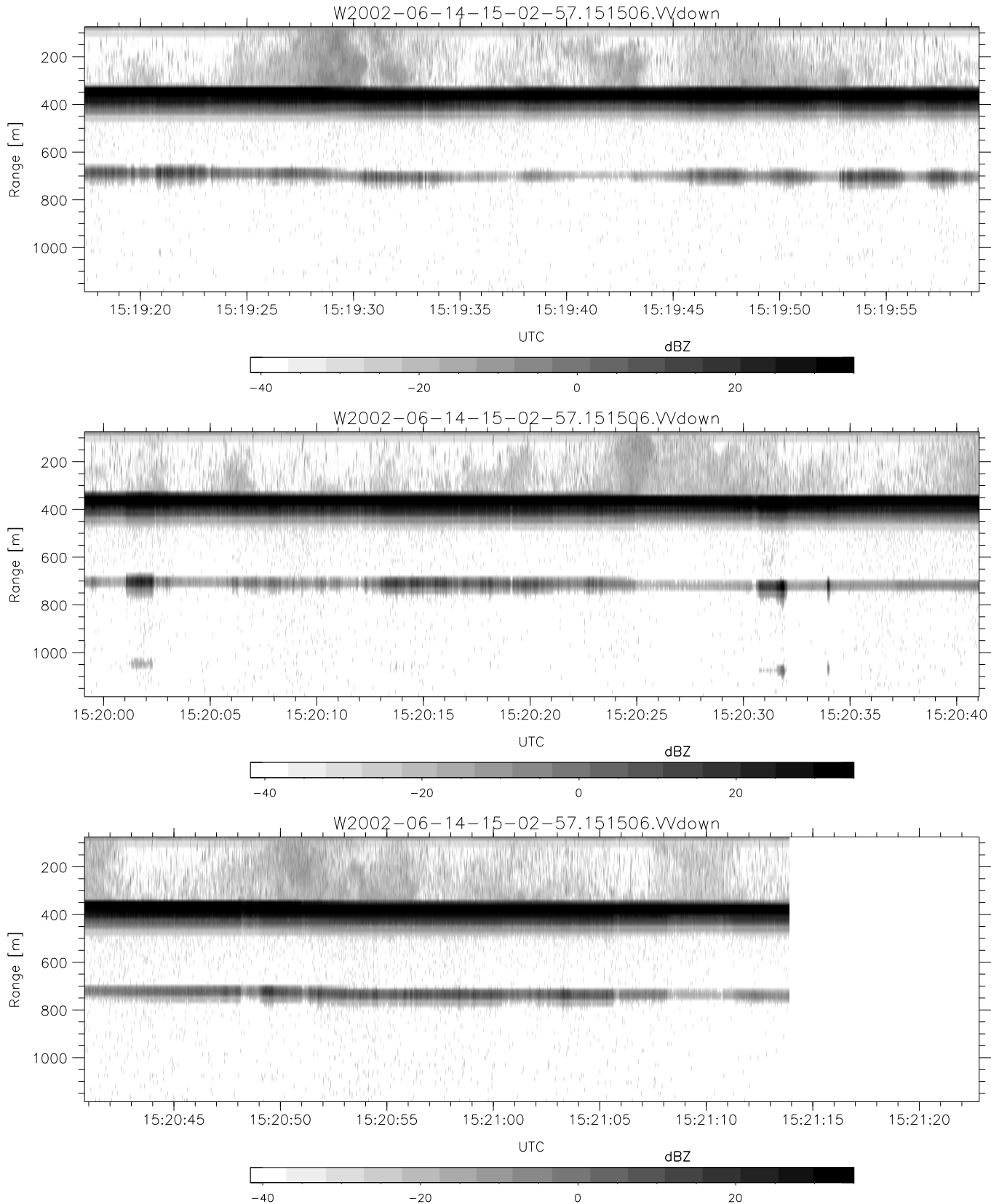
	Min	Max	Mean	Std	Varc%
hhN(dB)	-66.90	-63.76	-65.29	-75.37	9.8
vvN(dB)	-67.30	-63.81	-65.61	-75.53	10.2
hhL(dB)	-9.91	-1.75	-3.04	-10.13	19.5
vvL(dB)	-3.08	0.50	-1.02	-9.63	13.8
ppN(m/s)	-12.59	12.91	0.01	4.11	
ppT(m/s)	-99.42	102.03	0.11	32.47	
hh/vv(dB)	-NaN	39.21	14.31	28.14	2417
vh/hh(dB)	-38.40	-28.05	-31.55	-34.25	53.7
hv/vv(dB)	-NaN	-17.96	-45.83	-37.02	759.
hnjmp(dB)	-2.19	2.08	-0.10	-8.74	13.7
vnjmp(dB)	-2.48	2.17	-0.08	-8.66	13.9



IHOP 2002 (dual-antenna config, modes 1,3,4,7) Data (cal: 49.0,50.0)

W2002-06-14-15-02-57 - PPMAG4  
 IRIG:1,UTC: 15:02:52.11 to 17:39:16.80, Dur: 9384s  
 TimeLngth: 9384.69s, TimeInt: 28ms (34.7pps)  
 TimeCor=-13.0s, DSPDif(mn,min,mx):28,28,246  
 PPS(min,max,std): 28,36,1.69  
 Prof: 394 to 326207, NumProf(t/r): 325813/12802  
 ProcTime/Recs: 15:15:06-15:21:13/25604-38405  
 MxACQtime: 33ms; DRate: 146.9KB/s; Flags: 0, 0, 0  
 Pulse: 275ns, IFfilt: 5.0MHz; ppPol: HH HV VV  
 TxPol: HHVV, PRF: 20 10 20 10 kHz  
 Range: Delay 75m, Spacing 15m, Gates 75  
 Ave. Pulses: 84, Rng/Prof Aspect@90m/s: 5.8

	Min	Max	Mean	Std	Varc%
hhN(dB)	-66.90	-63.76	-65.29	-75.37	9.8
vvN(dB)	-67.30	-63.81	-65.61	-75.53	10.2
hhL(dB)	-9.91	-1.75	-3.04	-10.13	19.5
vvL(dB)	-3.08	0.50	-1.02	-9.63	13.8
ppN(m/s)	-12.59	12.91	0.01	4.11	
ppT(m/s)	-99.42	102.03	0.11	32.47	
hh/vv(dB)	-NaN	39.21	14.31	28.14	2417
vh/hh(dB)	-38.40	-28.05	-31.55	-34.25	53.7
hv/vv(dB)	-NaN	-17.96	-45.83	-37.02	759.
hnjmp(dB)	-2.19	2.08	-0.10	-8.74	13.7
vnjmp(dB)	-2.48	2.17	-0.08	-8.66	13.9



IHOP 2002 (dual-antenna config, modes 1,3,4,7) Data (cal: 49.0,50.0)

W2002-06-14-15-02-57 - PPMAG4  
 IRIG:1,UTC: 15:02:52.11 to 17:39:16.80, Dur: 9384s  
 TimeLngth: 9384.69s, TimeInt: 28ms (34.7pps)  
 TimeCor=-13.0s, DSPDif(mn,min,mx):28,28,246  
 PPS(min,max,std): 28,36,1.69  
 Prof: 394 to 326207, NumProf(t/r): 325813/12802  
 ProcTime/Recs: 15:15:06-15:21:13/25604-38405  
 MxACQtime: 33ms; DRate: 146.9KB/s; Flags: 0, 0, 0  
 Pulse: 275ns, IFfilt: 5.0MHz; ppPol: HH HV VV  
 TxPol: HHVV, PRF: 20 10 20 10 kHz  
 Range: Delay 75m, Spacing 15m, Gates 75  
 Ave. Pulses: 84, Rng/Prof Aspect@90m/s: 5.8

	Min	Max	Mean	Std	Varc%
hhN(dB)	-66.90	-63.76	-65.29	-75.37	9.8
vvN(dB)	-67.30	-63.81	-65.61	-75.53	10.2
hhL(dB)	-9.91	-1.75	-3.04	-10.13	19.5
vvL(dB)	-3.08	0.50	-1.02	-9.63	13.8
ppN(m/s)	-12.59	12.91	0.01	4.11	
ppT(m/s)	-99.42	102.03	0.11	32.47	
hh/vv(dB)	-NaN	39.21	14.31	28.14	2417
vh/hh(dB)	-38.40	-28.05	-31.55	-34.25	53.7
hv/vv(dB)	-NaN	-17.96	-45.83	-37.02	759.
hnjmp(dB)	-2.19	2.08	-0.10	-8.74	13.7
vnjmp(dB)	-2.48	2.17	-0.08	-8.66	13.9