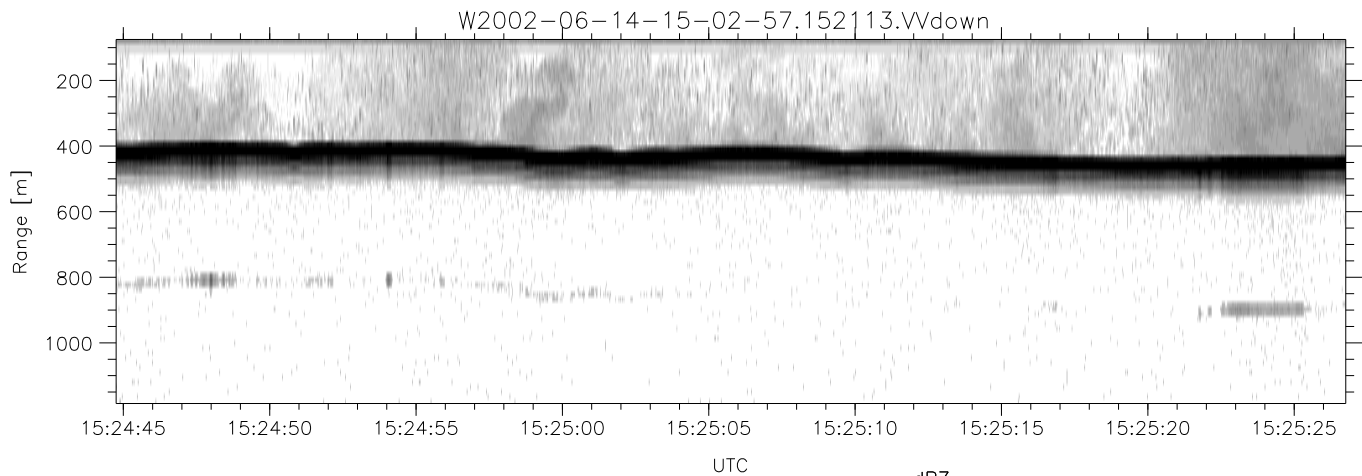
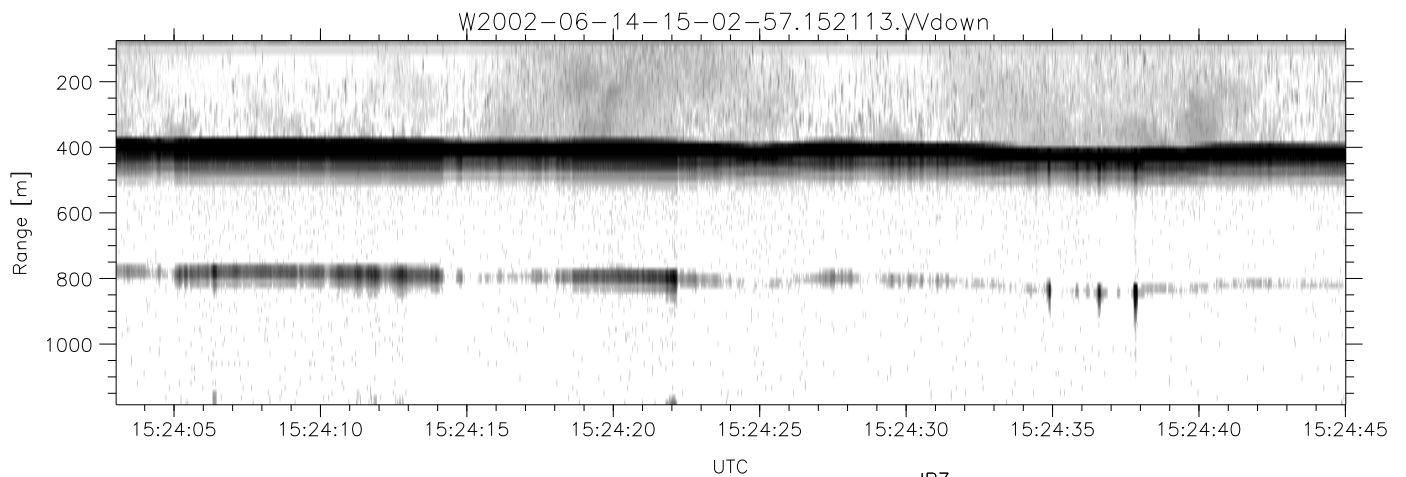
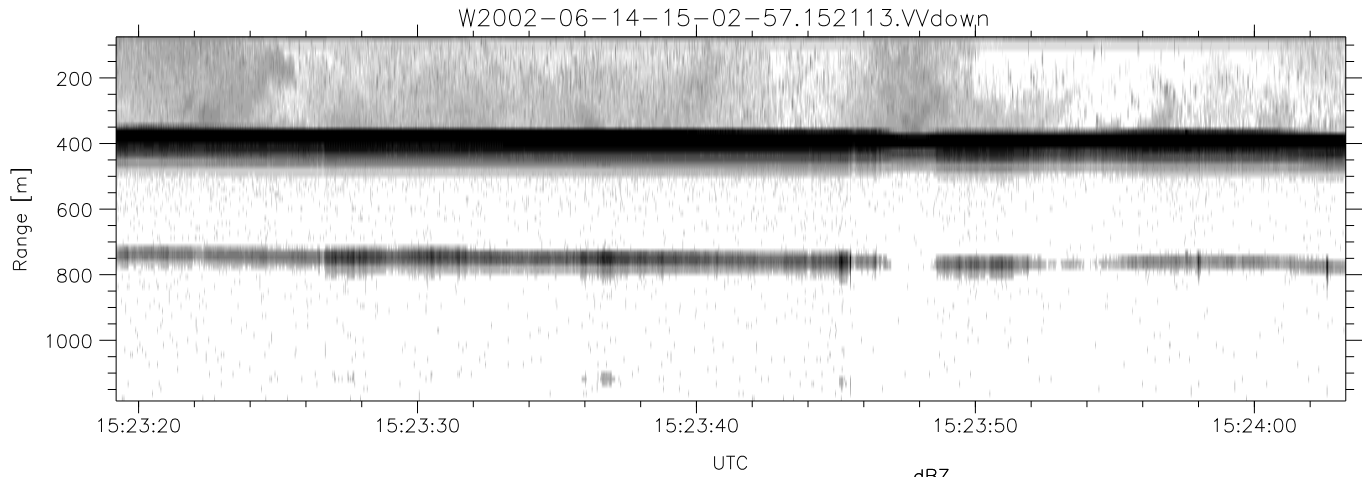


IHOP 2002 (dual-antenna config, modes 1,3,4,7) Data (cal: 49.0,50.0)

W2002-06-14-15-02-57 - PPMAG4  
 IRIG:1,UTC: 15:02:52.11 to 17:39:16.80, Dur: 9384s  
 TimeLngth: 9384.69s, TimeInt: 28ms (34.7pps)  
 TimeCor=-13.0s, DSPDif(mn,min,mx):28,28,372  
 PPS(min,max,std): 17,36,2.32  
 Prof: 394 to 326207, NumProf(t/r): 325813/12802  
 ProcTime/Recs: 15:21:13-15:27:23/38406-51207  
 MxACQtime: 33ms; DRate: 146.9KB/s; Flags: 0, 0, 0  
 Pulse: 275ns, IFfilt: 5.0MHz; ppPol: HH HV VV  
 TxPol: HHVV, PRF: 20 10 20 10 kHz  
 Range: Delay 75m, Spacing 15m, Gates 75  
 Ave. Pulses: 84, Rng/Prof Aspect@90m/s: 5.8

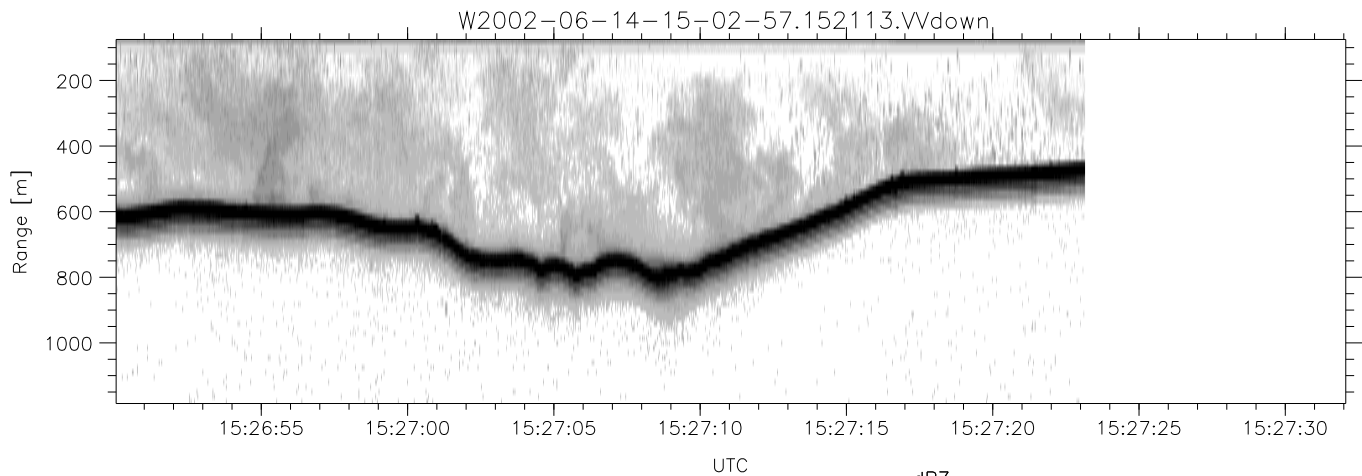
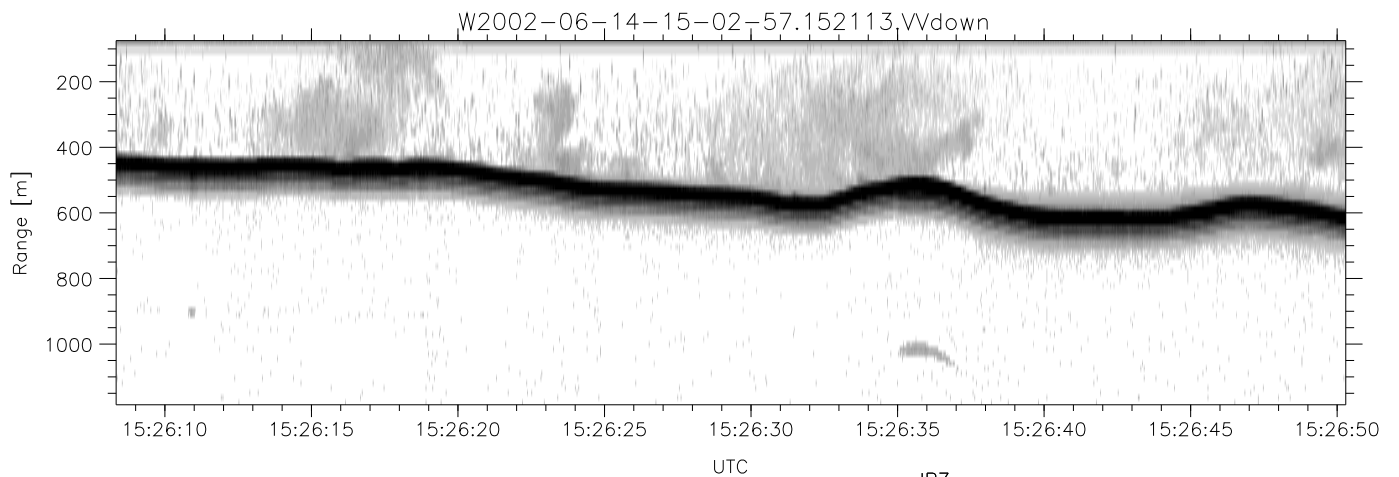
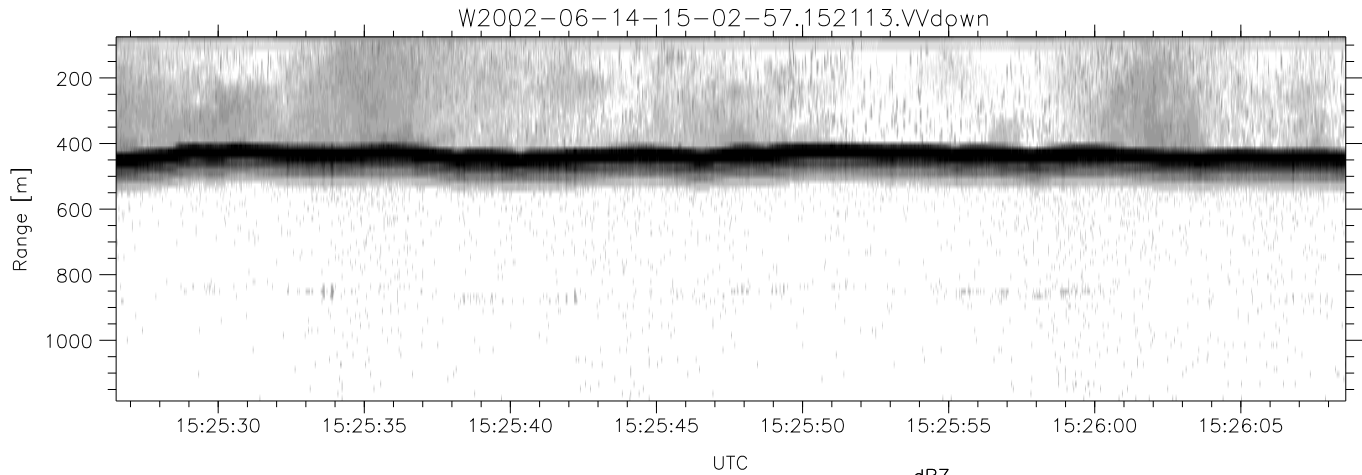
	Min	Max	Mean	Std	Varc%
hhN(dB)	-66.90	-63.85	-65.31	-75.47	9.6
vvN(dB)	-67.35	-64.04	-65.61	-75.61	10.0
hhL(dB)	-12.45	-1.84	-3.42	-9.08	27.2
vvL(dB)	-3.13	0.57	-1.07	-9.54	14.2
ppN(m/s)	-12.46	12.17	0.10	4.12	
ppT(m/s)	-98.44	96.11	0.80	32.57	
hh/vv(dB)	-NaN	48.96	-NaN	33.76	-387
vh/hh(dB)	-NaN	-28.21	-32.65	-34.22	69.7
hv/vv(dB)	-NaN	-18.07	-48.54	-39.44	814.
hnjmp(dB)	-2.24	1.96	-0.09	-8.77	13.6
vnjmp(dB)	-2.25	2.07	-0.08	-8.65	13.9



IHOP 2002 (dual-antenna config, modes 1,3,4,7) Data (cal: 49.0,50.0)

W2002-06-14-15-02-57 - PPMAG4  
 IRIG:1,UTC: 15:02:52.11 to 17:39:16.80, Dur: 9384s  
 TimeLngth: 9384.69s, TimeInt: 28ms (34.7pps)  
 TimeCor=-13.0s, DSPDif(mn,min,mx):28,28,372  
 PPS(min,max,std): 17,36,2.32  
 Prof: 394 to 326207, NumProf(t/r): 325813/12802  
 ProcTime/Recs: 15:21:13-15:27:23/38406-51207  
 MxACQtime: 33ms; DRate: 146.9KB/s; Flags: 0, 0, 0  
 Pulse: 275ns, IFfilt: 5.0MHz; ppPol: HH HV VV  
 TxPol: HHVV, PRF: 20 10 20 10 kHz  
 Range: Delay 75m, Spacing 15m, Gates 75  
 Ave. Pulses: 84, Rng/Prof Aspect@90m/s: 5.8

	Min	Max	Mean	Std	Varc%
hhN(dB)	-66.90	-63.85	-65.31	-75.47	9.6
vvN(dB)	-67.35	-64.04	-65.61	-75.61	10.0
hhL(dB)	-12.45	-1.84	-3.42	-9.08	27.2
vvL(dB)	-3.13	0.57	-1.07	-9.54	14.2
ppN(m/s)	-12.46	12.17	0.10	4.12	
ppT(m/s)	-98.44	96.11	0.80	32.57	
hh/vv(dB)	-NaN	48.96	-NaN	33.76	-387
vh/hh(dB)	-NaN	-28.21	-32.65	-34.22	69.7
hv/vv(dB)	-NaN	-18.07	-48.54	-39.44	814.
hnjmp(dB)	-2.24	1.96	-0.09	-8.77	13.6
vnjmp(dB)	-2.25	2.07	-0.08	-8.65	13.9



IHOP 2002 (dual-antenna config, modes 1,3,4,7) Data (cal: 49.0,50.0)

W2002-06-14-15-02-57 - PPMAG4  
 IRIG:1,UTC: 15:02:52.11 to 17:39:16.80, Dur: 9384s  
 TimeLngth: 9384.69s, TimeInt: 28ms (34.7pps)  
 TimeCor=-13.0s, DSPDif(mn,min,mx):28,28,372  
 PPS(min,max,std): 17,36,2.32  
 Prof: 394 to 326207, NumProf(t/r): 325813/12802  
 ProcTime/Recs: 15:21:13-15:27:23/38406-51207  
 MxACQtime: 33ms; DRate: 146.9KB/s; Flags: 0, 0, 0  
 Pulse: 275ns, IFfilt: 5.0MHz; ppPol: HH HV VV  
 TxPol: HHVV, PRF: 20 10 20 10 kHz  
 Range: Delay 75m, Spacing 15m, Gates 75  
 Ave. Pulses: 84, Rng/Prof Aspect@90m/s: 5.8

	Min	Max	Mean	Std	Varc%
hhN(dB)	-66.90	-63.85	-65.31	-75.47	9.6
vvN(dB)	-67.35	-64.04	-65.61	-75.61	10.0
hhL(dB)	-12.45	-1.84	-3.42	-9.08	27.2
vvL(dB)	-3.13	0.57	-1.07	-9.54	14.2
ppN(m/s)	-12.46	12.17	0.10	4.12	
ppT(m/s)	-98.44	96.11	0.80	32.57	
hh/vv(dB)	-NaN	48.96	-NaN	33.76	-387
vh/hh(dB)	-NaN	-28.21	-32.65	-34.22	69.7
hv/vv(dB)	-NaN	-18.07	-48.54	-39.44	814.
hnjmp(dB)	-2.24	1.96	-0.09	-8.77	13.6
vnjmp(dB)	-2.25	2.07	-0.08	-8.65	13.9