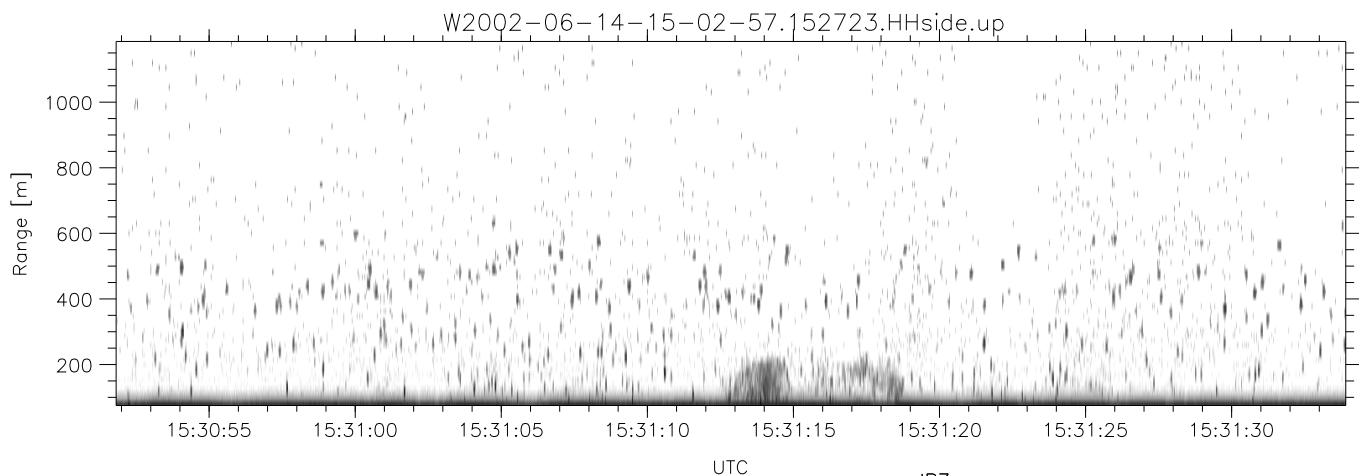
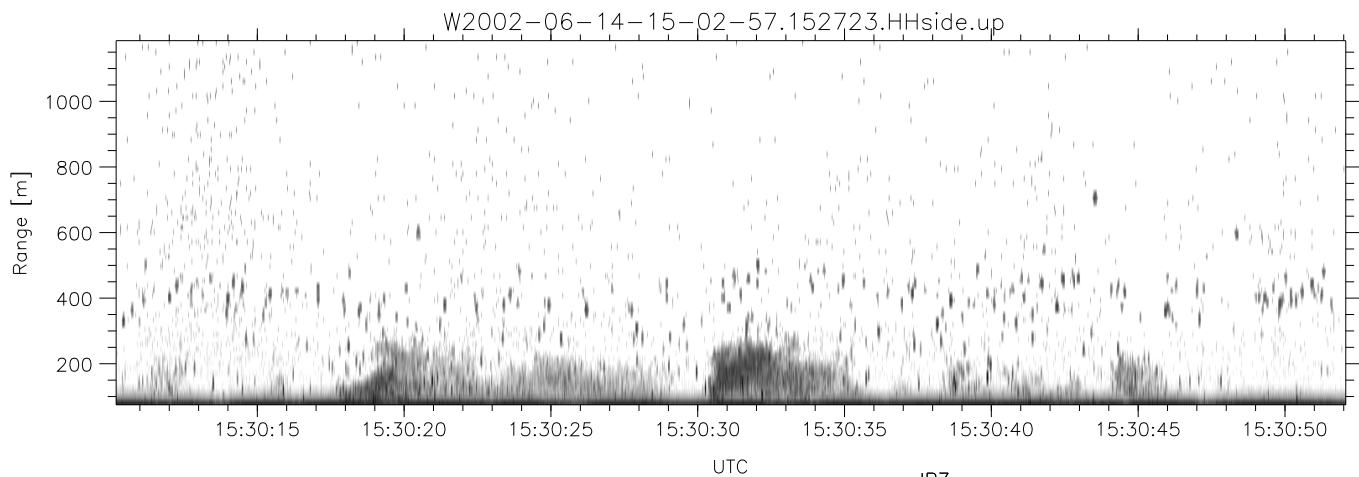
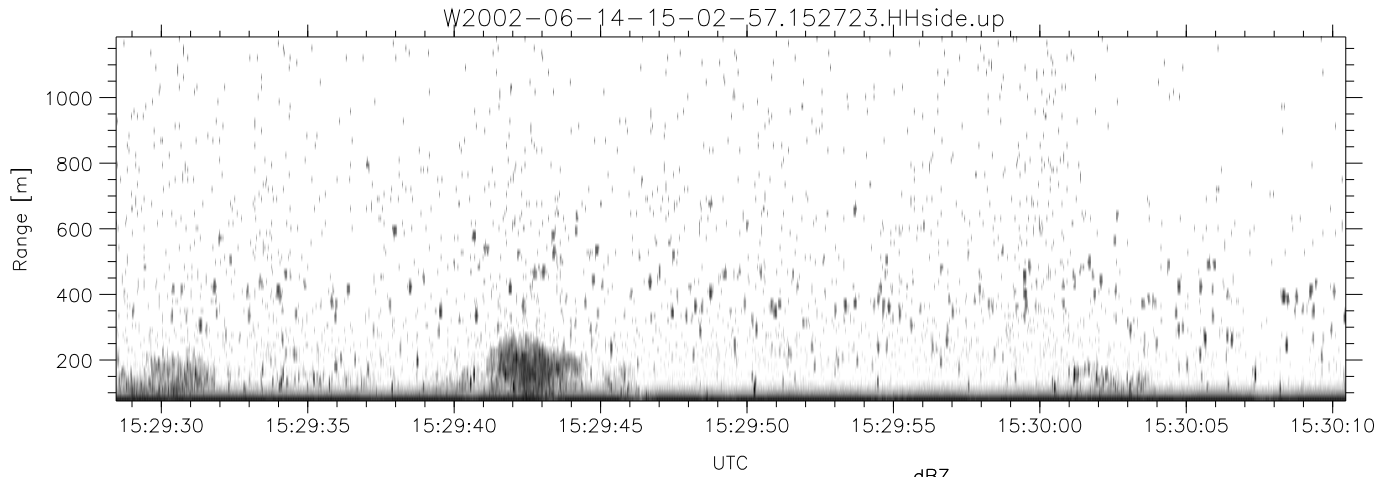


IHOP 2002 (dual-antenna config, modes 1,3,4,7) Data (cal: 49.0,50.0)

W2002-06-14-15-02-57 - PPMAG4  
 IRIG:1,UTC: 15:02:52.11 to 17:39:16.80, Dur: 9384s  
 TimeLngth: 9384.69s, TimeInt: 28ms (34.7pps)  
 TimeCor=-13.0s, DSPDif(mn,min,mx):28,28,239  
 PPS(min,max,std): 27,36,1.66  
 Prof: 394 to 326207, NumProf(t/r): 325813/12802  
 ProcTime/Recs: 15:27:23-15:33:30/51208-64009  
 MxACQtime: 33ms; DRate: 146.9KB/s; Flags: 0, 0, 0  
 Pulse: 275ns, IFfilt: 5.0MHz; ppPol: HH HV VV  
 TxPol: HHVV, PRF: 20 10 20 10 kHz  
 Range: Delay 75m, Spacing 15m, Gates 75  
 Ave. Pulses: 84, Rng/Prof Aspect@90m/s: 5.8

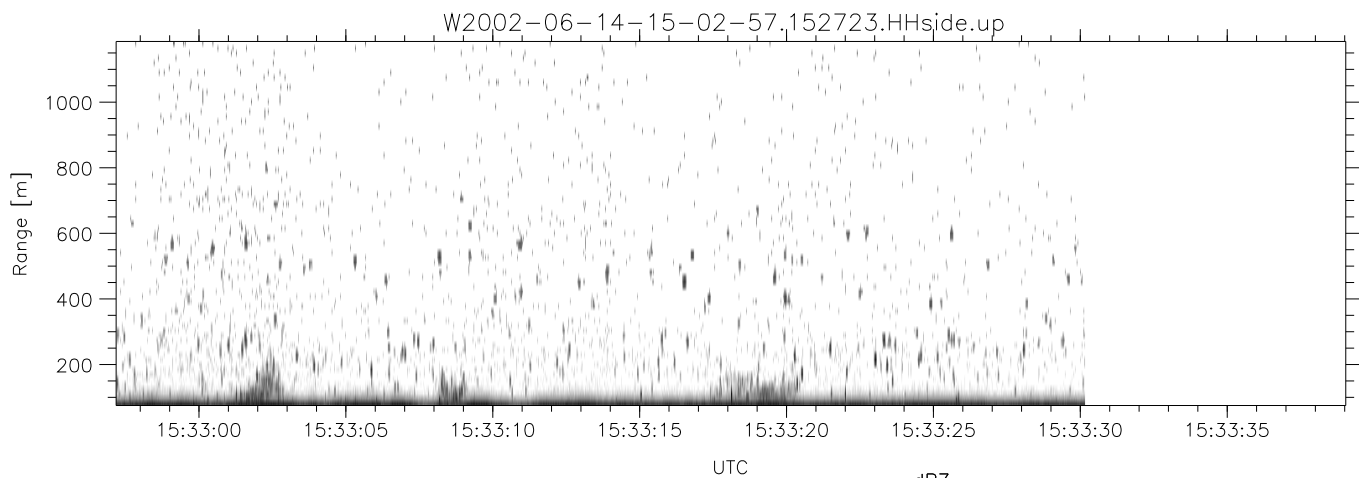
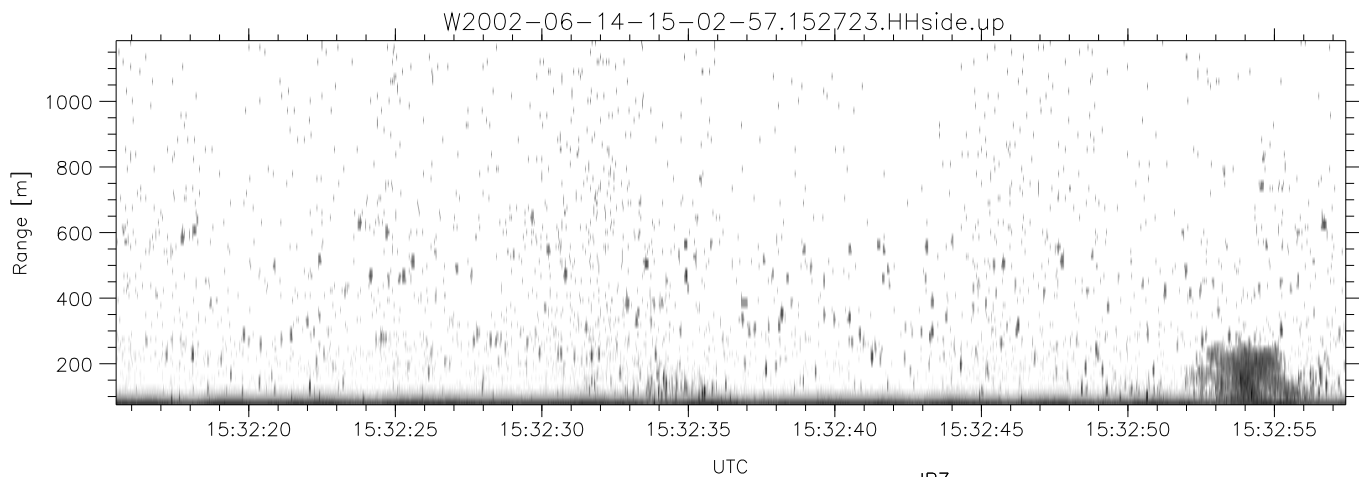
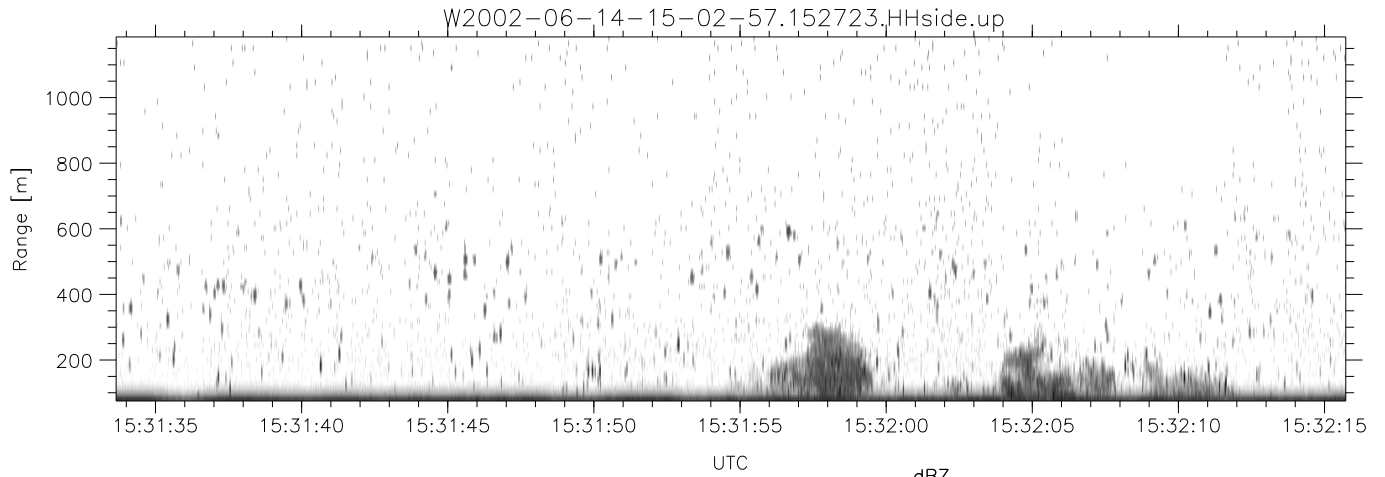
	Min	Max	Mean	Std	Varc%
hhN(dB)	-67.29	-63.59	-65.32	-75.46	9.7
vvN(dB)	-67.31	-63.62	-65.62	-75.58	10.1
hhL(dB)	-11.74	-1.91	-3.94	-8.76	32.9
vvL(dB)	-4.39	0.29	-1.77	-8.29	22.2
ppN(m/s)	-12.31	12.85	0.11	4.18	
ppT(m/s)	-97.23	101.54	0.90	33.06	
hh/vv(dB)	-NaN	46.79	14.73	28.52	2392
vh/hh(dB)	-NaN	-28.28	-32.79	-34.33	70.2
hv/vv(dB)	-NaN	-17.84	-46.86	-36.88	994.
hnjmp(dB)	-2.47	2.21	-0.07	-8.75	13.6
vnjmp(dB)	-2.47	2.02	-0.08	-8.63	14.0



IHOP 2002 (dual-antenna config, modes 1,3,4,7) Data (cal: 49.0,50.0)

W2002-06-14-15-02-57 - PPMAG4  
 IRIG:1,UTC: 15:02:52.11 to 17:39:16.80, Dur: 9384s  
 TimeLngth: 9384.69s, TimeInt: 28ms (34.7pps)  
 TimeCor=-13.0s, DSPDif(mn,min,mx):28,28,239  
 PPS(min,max,std): 27,36,1.66  
 Prof: 394 to 326207, NumProf(t/r): 325813/12802  
 ProcTime/Recs: 15:27:23-15:33:30/51208-64009  
 MxACQtime: 33ms; DRate: 146.9KB/s; Flags: 0, 0, 0  
 Pulse: 275ns, IFfilt: 5.0MHz; ppPol: HH HV VV  
 TxPol: HHVV, PRF: 20 10 20 10 kHz  
 Range: Delay 75m, Spacing 15m, Gates 75  
 Ave. Pulses: 84, Rng/Prof Aspect@90m/s: 5.8

	Min	Max	Mean	Std	Varc%
hhN(dB)	-67.29	-63.59	-65.32	-75.46	9.7
vvN(dB)	-67.31	-63.62	-65.62	-75.58	10.1
hhL(dB)	-11.74	-1.91	-3.94	-8.76	32.9
vvL(dB)	-4.39	0.29	-1.77	-8.29	22.2
ppN(m/s)	-12.31	12.85	0.11	4.18	
ppT(m/s)	-97.23	101.54	0.90	33.06	
hh/vv(dB)	-NaN	46.79	14.73	28.52	2392
vh/hh(dB)	-NaN	-28.28	-32.79	-34.33	70.2
hv/vv(dB)	-NaN	-17.84	-46.86	-36.88	994.
hnjmp(dB)	-2.47	2.21	-0.07	-8.75	13.6
vnjmp(dB)	-2.47	2.02	-0.08	-8.63	14.0



IHOP 2002 (dual-antenna config, modes 1,3,4,7) Data (cal: 49.0,50.0)

W2002-06-14-15-02-57 - PPMAG4  
 IRIG:1,UTC: 15:02:52.11 to 17:39:16.80, Dur: 9384s  
 TimeLngth: 9384.69s, TimeInt: 28ms (34.7pps)  
 TimeCor=-13.0s, DSPDif(mn,min,mx):28,28,239  
 PPS(min,max,std): 27,36,1.66  
 Prof: 394 to 326207, NumProf(t/r): 325813/12802  
 ProcTime/Recs: 15:27:23-15:33:30/51208-64009  
 MxACQtime: 33ms; DRate: 146.9KB/s; Flags: 0, 0, 0  
 Pulse: 275ns, IFfilt: 5.0MHz; ppPol: HH HV VV  
 TxPol: HHVV, PRF: 20 10 20 10 kHz  
 Range: Delay 75m, Spacing 15m, Gates 75  
 Ave. Pulses: 84, Rng/Prof Aspect@90m/s: 5.8

	Min	Max	Mean	Std	Varc%
hhN(dB)	-67.29	-63.59	-65.32	-75.46	9.7
vvN(dB)	-67.31	-63.62	-65.62	-75.58	10.1
hhL(dB)	-11.74	-1.91	-3.94	-8.76	32.9
vvL(dB)	-4.39	0.29	-1.77	-8.29	22.2
ppN(m/s)	-12.31	12.85	0.11	4.18	
ppT(m/s)	-97.23	101.54	0.90	33.06	
hh/vv(dB)	-NaN	46.79	14.73	28.52	2392
vh/hh(dB)	-NaN	-28.28	-32.79	-34.33	70.2
hv/vv(dB)	-NaN	-17.84	-46.86	-36.88	994.
hnjmp(dB)	-2.47	2.21	-0.07	-8.75	13.6
vnjmp(dB)	-2.47	2.02	-0.08	-8.63	14.0