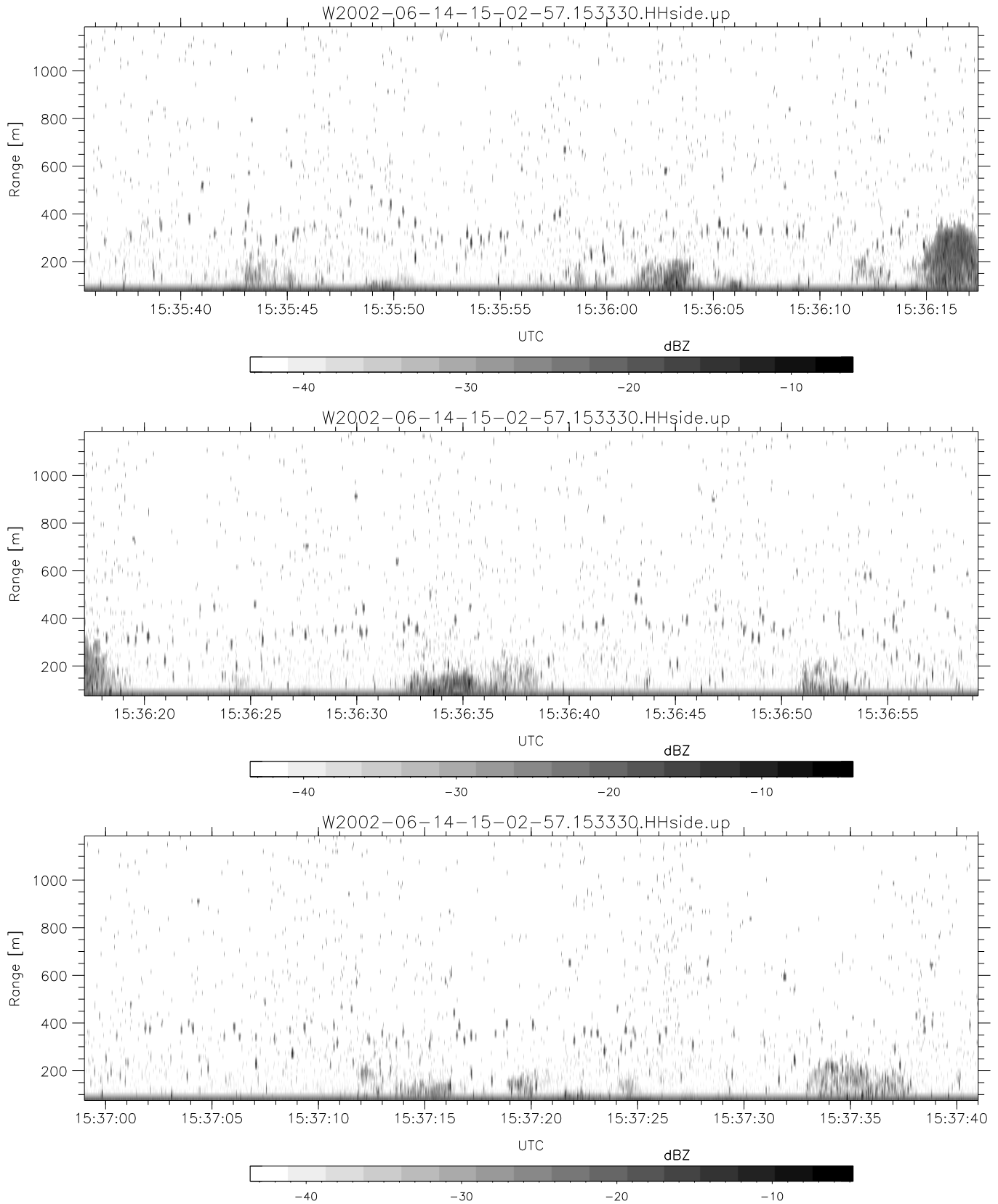


IHOP 2002 (dual-antenna config, modes 1,3,4,7) Data (cal: 49.0,50.0)

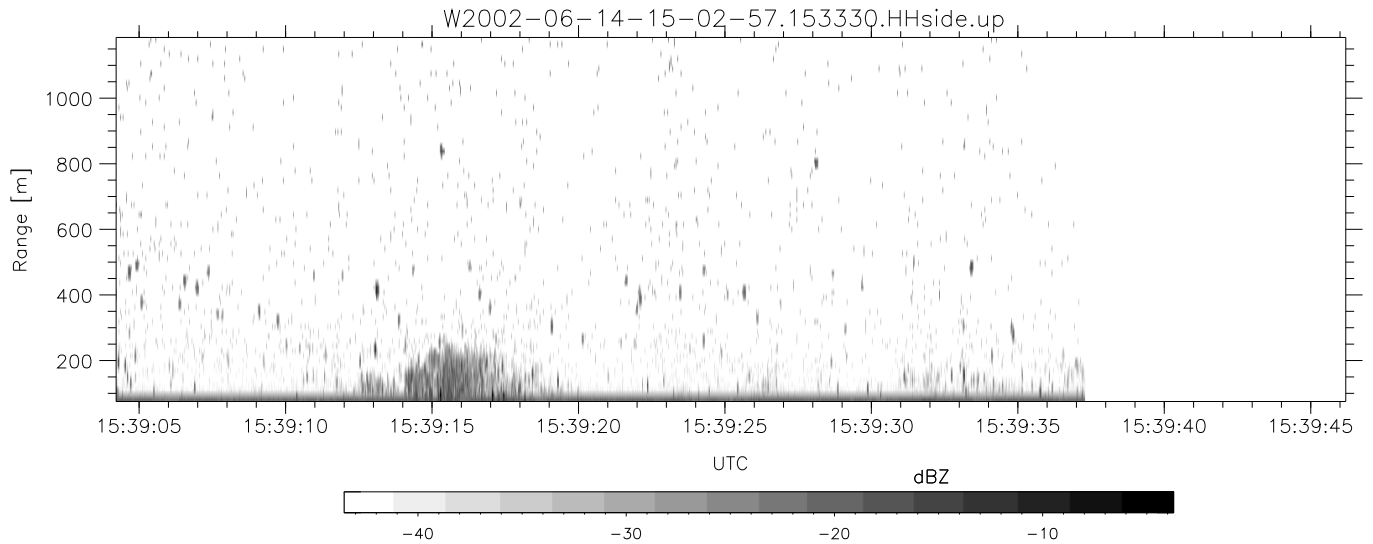
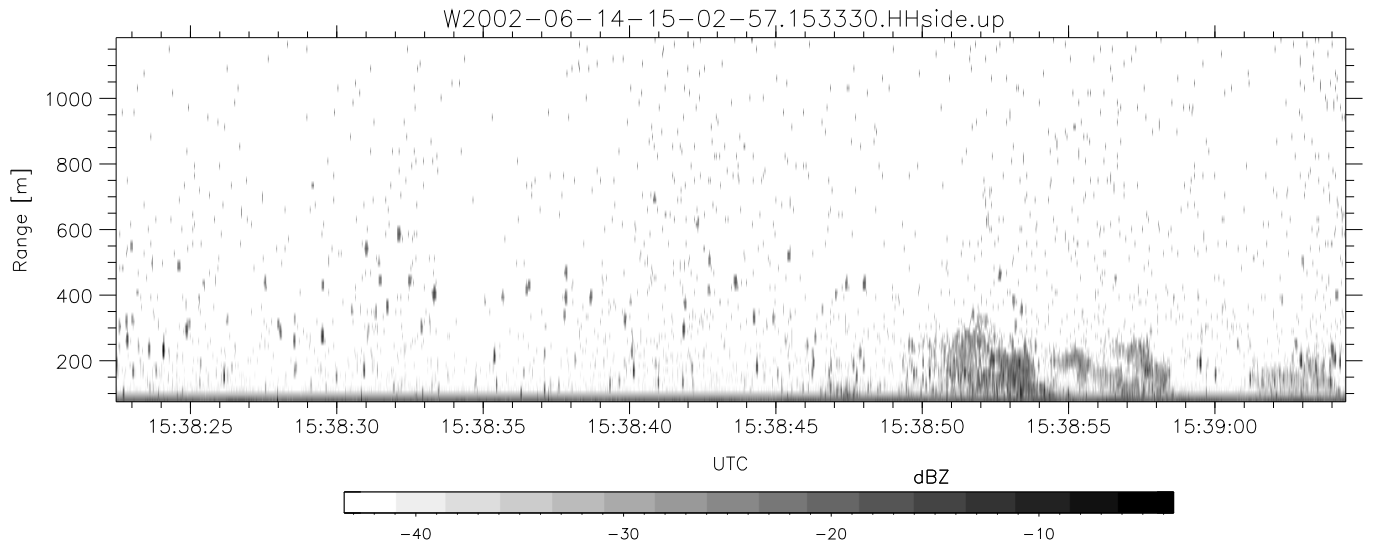
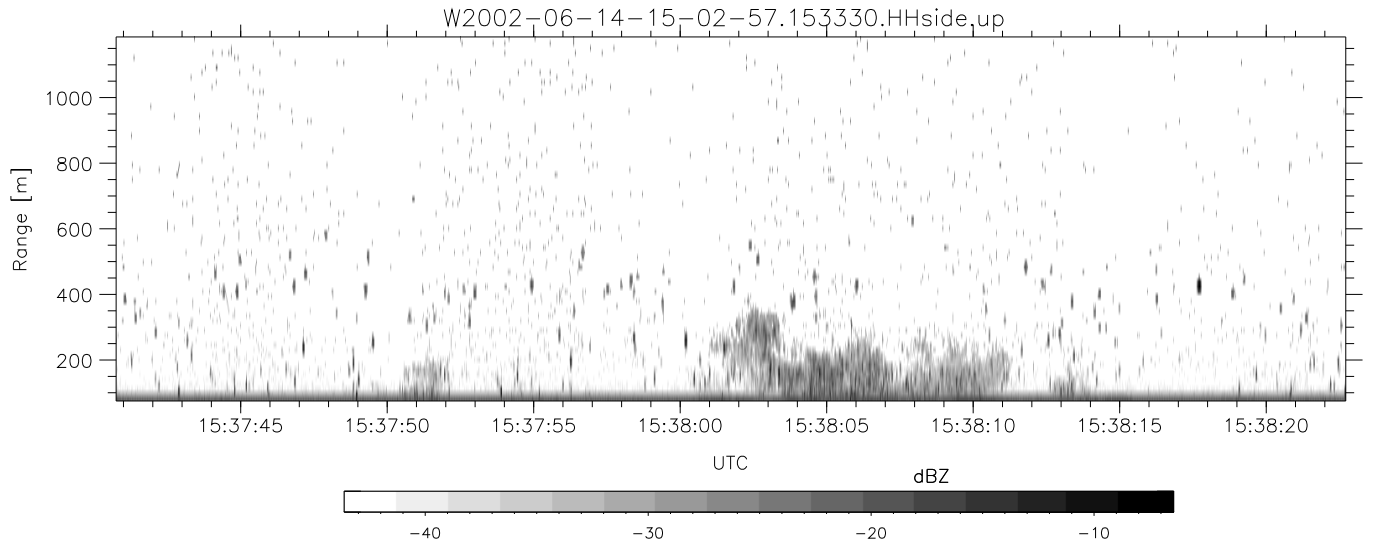
W2002-06-14-15-02-57 - PPMAG4  
 IRIG:1,UTC: 15:02:52.11 to 17:39:16.80, Dur: 9384s  
 TimeLngth: 9384.69s, TimeInt: 28ms (34.7pps)  
 TimeCor=-13.0s, DSPDif(mn,min,mx):28,28,257  
 PPS(min,max,std): 27,36,1.61  
 Prof: 394 to 326207, NumProf(t/r): 325813/12802  
 ProcTime/Recs: 15:33:30-15:39:37/64010-76811  
 MxACQtime: 33ms; DRate: 146.9KB/s; Flags: 0, 0, 0  
 Pulse: 275ns, IFfilt: 5.0MHz; ppPol: HH HV VV  
 TxPol: HHVV, PRF: 20 10 20 10 kHz  
 Range: Delay 75m, Spacing 15m, Gates 75  
 Ave. Pulses: 84, Rng/Prof Aspect@90m/s: 5.8

	Min	Max	Mean	Std	Varc%
hhN(dB)	-67.40	-63.92	-65.34	-75.50	9.6
vvN(dB)	-67.52	-64.02	-65.68	-75.76	9.8
hhL(dB)	-10.73	-3.12	-8.62	-14.06	28.6
vvL(dB)	-4.78	-0.61	-2.65	-10.46	16.5
ppN(m/s)	-12.55	12.66	0.02	4.17	
ppT(m/s)	-99.11	99.99	0.19	32.93	
hh/vv(dB)	-NaN	41.36	14.47	26.87	1741
vh/hh(dB)	-47.42	-31.38	-35.22	-36.76	70.1
hv/vv(dB)	-NaN	-26.83	-47.42	-44.98	175.
hnjmp(dB)	-2.48	2.36	-0.07	-8.72	13.7
vnjmp(dB)	-2.54	2.44	-0.07	-8.65	13.9



IHOP 2002 (dual-antenna config, modes 1,3,4,7) Data (cal: 49.0,50.0)

	Min	Max	Mean	Std	Varc%
W2002-06-14-15-02-57 - PPMAG4					
IRIG:1,UTC: 15:02:52.11 to 17:39:16.80, Dur: 9384s	hhN (dB)	-67.40 -63.92	-65.34	-75.50	9.6
TimeLngth: 9384.69s, TimeInt: 28ms (34.7pps)	vvN (dB)	-67.52 -64.02	-65.68	-75.76	9.8
TimeCor=-13.0s, DSPDif(mn,min,mx):28,28,257	hhL (dB)	-10.73 -3.12	-8.62	-14.06	28.6
PPS(min,max,std): 27,36,1.61	vvL (dB)	-4.78 -0.61	-2.65	-10.46	16.5
Prof: 394 to 326207, NumProf(t/r): 325813/12802	ppN (m/s)	-12.55 12.66	0.02	4.17	
ProcTime/Recs: 15:33:30-15:39:37/64010-76811	ppT (m/s)	-99.11 99.99	0.19	32.93	
MxACQtime: 33ms; DRate: 146.9KB/s; Flags: 0, 0, 0	hh/vv (dB)	-NaN 41.36	14.47	26.87	1741
Pulse: 275ns, IFilt: 5.0MHz; ppPol: HH HV VV	vh/hh (dB)	-47.42 -31.38	-35.22	-36.76	70.1
TxPol: HHVV, PRF: 20 10 20 10 kHz	hv/vv (dB)	-NaN -26.83	-47.42	-44.98	175.
Range: Delay 75m, Spacing 15m, Gates 75	hn/jmp (dB)	-2.48 2.36	-0.07	-8.72	13.7
Ave. Pulses: 84, Rng/Prof Aspect@90m/s: 5.8	vn/jmp (dB)	-2.54 2.44	-0.07	-8.65	13.9



IHOP 2002 (dual-antenna config, modes 1,3,4,7) Data (cal: 49.0,50.0)

W2002-06-14-15-02-57 - PPMAG4  
 IRIG:1,UTC: 15:02:52.11 to 17:39:16.80, Dur: 9384s  
 TimeLngth: 9384.69s, TimeInt: 28ms (34.7pps)  
 TimeCor=-13.0s, DSPDif(mn,min,mx):28,28,257  
 PPS(min,max,std): 27,36,1.61  
 Prof: 394 to 326207, NumProf(t/r): 325813/12802  
 ProcTime/Recs: 15:33:30-15:39:37/64010-76811  
 MxACQtime: 33ms; DRate: 146.9KB/s; Flags: 0, 0, 0  
 Pulse: 275ns, IFfilt: 5.0MHz; ppPol: HH HV VV  
 TxPol: HHVV, PRF: 20 10 20 10 kHz  
 Range: Delay 75m, Spacing 15m, Gates 75  
 Ave. Pulses: 84, Rng/Prof Aspect@90m/s: 5.8

	Min	Max	Mean	Std	Varc%
hhN(dB)	-67.40	-63.92	-65.34	-75.50	9.6
vvN(dB)	-67.52	-64.02	-65.68	-75.76	9.8
hhL(dB)	-10.73	-3.12	-8.62	-14.06	28.6
vvL(dB)	-4.78	-0.61	-2.65	-10.46	16.5
ppN(m/s)	-12.55	12.66	0.02	4.17	
ppT(m/s)	-99.11	99.99	0.19	32.93	
hh/vv(dB)	-NaN	41.36	14.47	26.87	1741
vh/hh(dB)	-47.42	-31.38	-35.22	-36.76	70.1
hv/vv(dB)	-NaN	-26.83	-47.42	-44.98	175.
hnjmp(dB)	-2.48	2.36	-0.07	-8.72	13.7
vnjmp(dB)	-2.54	2.44	-0.07	-8.65	13.9