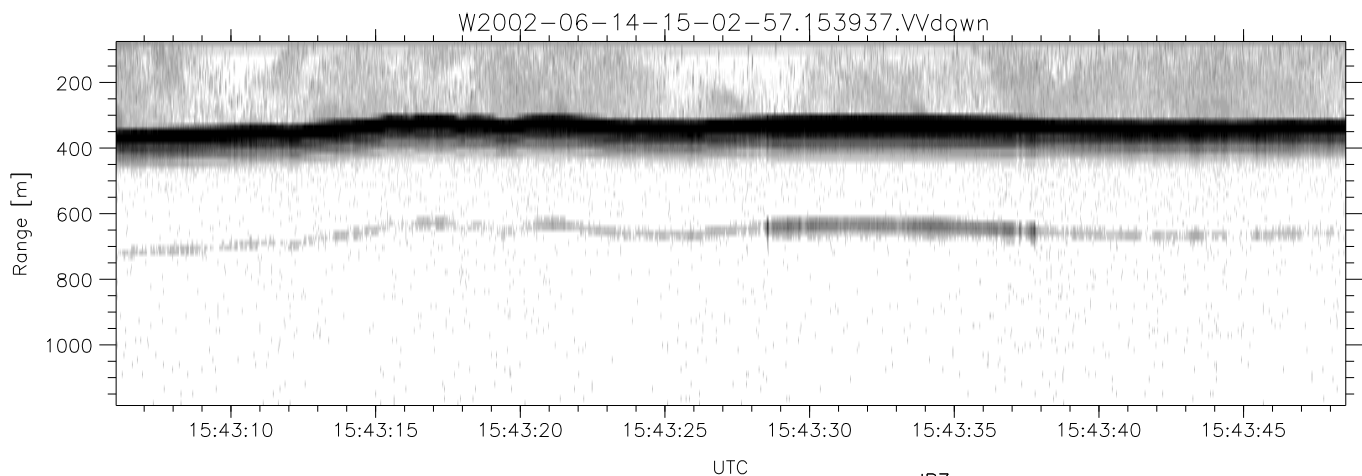
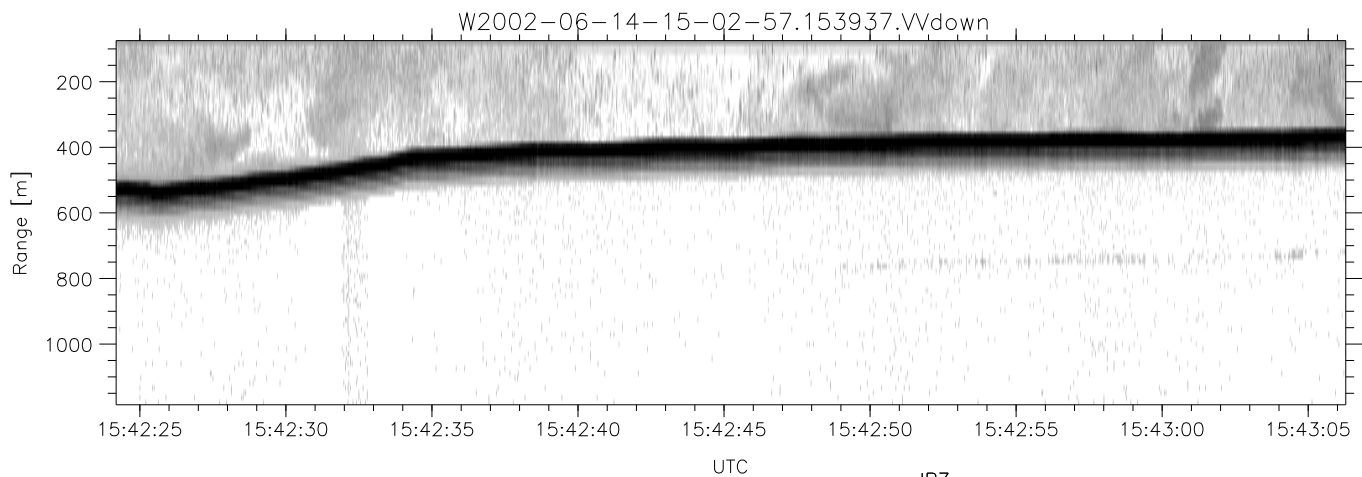
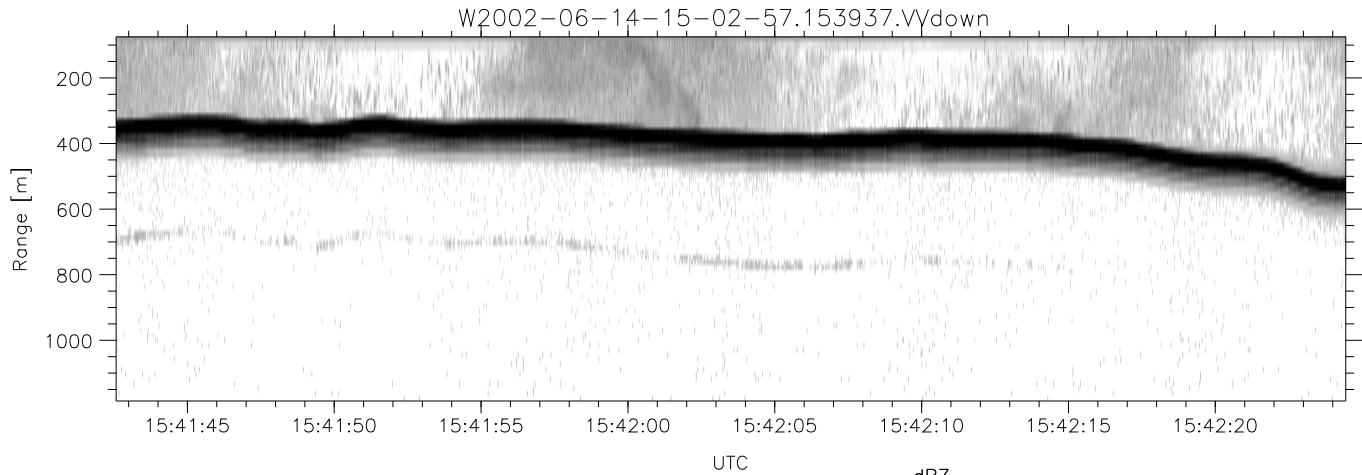


IHOP 2002 (dual-antenna config, modes 1,3,4,7) Data (cal: 49.0,50.0)

W2002-06-14-15-02-57 - PPMAG4  
 IRIG:1,UTC: 15:02:52.11 to 17:39:16.80, Dur: 9384s  
 TimeLngth: 9384.69s, TimeInt: 28ms (34.7pps)  
 TimeCor=-13.0s, DSPDif(mn,min,mx):28,28,390  
 PPS(min,max,std): 20,36,1.92  
 Prof: 394 to 326207, NumProf(t/r): 325813/12802  
 ProcTime/Recs: 15:39:37-15:45:45/76812-89613  
 MxACQtime: 33ms; DRate: 146.9KB/s; Flags: 0, 0, 0  
 Pulse: 275ns, IFfilt: 5.0MHz; ppPol: HH HV VV  
 TxPol: HHVV, PRF: 20 10 20 10 kHz  
 Range: Delay 75m, Spacing 15m, Gates 75  
 Ave. Pulses: 84, Rng/Prof Aspect@90m/s: 5.8

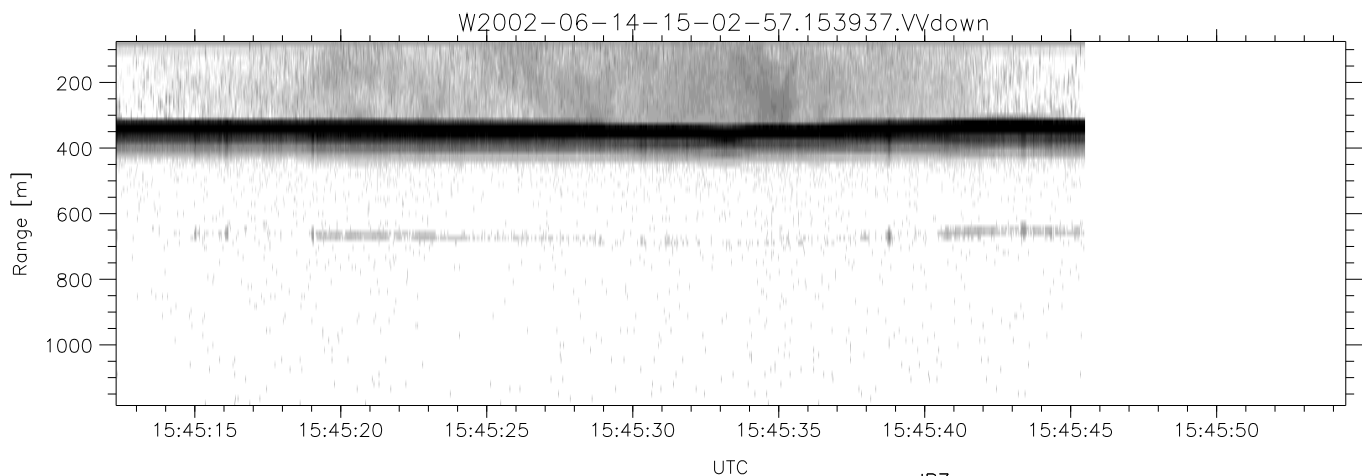
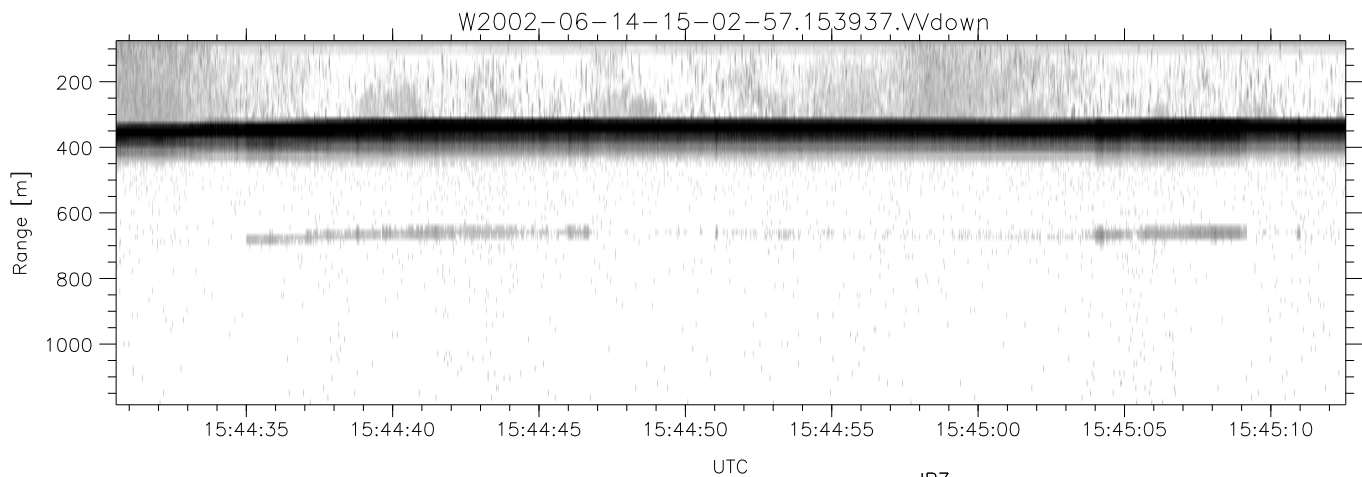
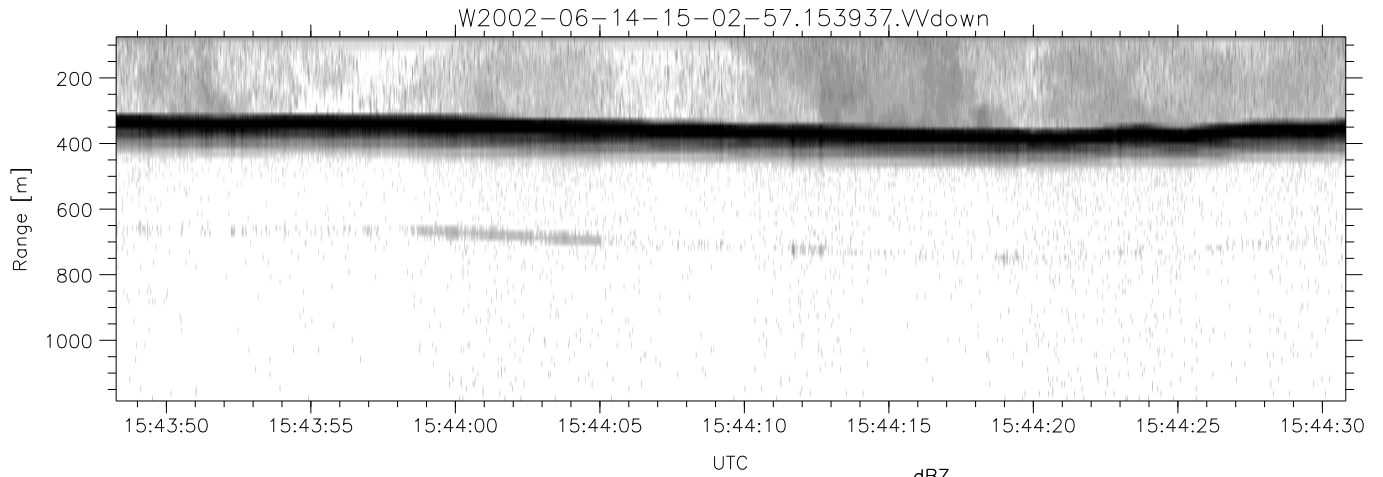
	Min	Max	Mean	Std	Varc%
hhN(dB)	-67.29	-62.31	-65.33	-74.66	11.7
vvN(dB)	-67.26	-62.69	-65.60	-74.85	11.9
hhL(dB)	-11.17	-4.39	-8.86	-17.68	13.1
vvL(dB)	-4.04	-0.37	-2.00	-11.41	11.4
ppN(m/s)	-12.62	12.40	0.11	4.13	
ppT(m/s)	-99.70	97.99	0.91	32.59	
hh/vv(dB)	-NaN	40.31	7.99	20.90	1951
vh/hh(dB)	-NaN	-28.52	-35.77	-36.13	92.0
hv/vv(dB)	-NaN	-30.06	-50.05	-44.84	331.
hh_jmp(dB)	-2.29	2.42	-0.07	-8.69	13.7
vv_jmp(dB)	-2.20	2.12	-0.08	-8.63	14.0



IHOP 2002 (dual-antenna config, modes 1,3,4,7) Data (cal: 49.0,50.0)

W2002-06-14-15-02-57 - PPMAG4  
 IRIG:1,UTC: 15:02:52.11 to 17:39:16.80, Dur: 9384s  
 TimeLngth: 9384.69s, TimeInt: 28ms (34.7pps)  
 TimeCor=-13.0s, DSPDif(mn,min,mx):28,28,390  
 PPS(min,max,std): 20,36,1.92  
 Prof: 394 to 326207, NumProf(t/r): 325813/12802  
 ProcTime/Recs: 15:39:37-15:45:45/76812-89613  
 MxACQtime: 33ms; DRate: 146.9KB/s; Flags: 0, 0, 0  
 Pulse: 275ns, IFfilt: 5.0MHz; ppPol: HH HV VV  
 TxPol: HHVV, PRF: 20 10 20 10 kHz  
 Range: Delay 75m, Spacing 15m, Gates 75  
 Ave. Pulses: 84, Rng/Prof Aspect@90m/s: 5.8

	Min	Max	Mean	Std	Varc%
hhN(dB)	-67.29	-62.31	-65.33	-74.66	11.7
vvN(dB)	-67.26	-62.69	-65.60	-74.85	11.9
hhL(dB)	-11.17	-4.39	-8.86	-17.68	13.1
vvL(dB)	-4.04	-0.37	-2.00	-11.41	11.4
ppN(m/s)	-12.62	12.40	0.11	4.13	
ppT(m/s)	-99.70	97.99	0.91	32.59	
hh/vv(dB)	-NaN	40.31	7.99	20.90	1951
vh/hh(dB)	-NaN	-28.52	-35.77	-36.13	92.0
hv/vv(dB)	-NaN	-30.06	-50.05	-44.84	331.
hnjmp(dB)	-2.29	2.42	-0.07	-8.69	13.7
vnjmp(dB)	-2.20	2.12	-0.08	-8.63	14.0



IHOP 2002 (dual-antenna config, modes 1,3,4,7) Data (cal: 49.0,50.0)

W2002-06-14-15-02-57 - PPMAG4  
 IRIG:1,UTC: 15:02:52.11 to 17:39:16.80, Dur: 9384s  
 TimeLngth: 9384.69s, TimeInt: 28ms (34.7pps)  
 TimeCor=-13.0s, DSPDif(mn,min,mx):28,28,390  
 PPS(min,max,std): 20,36,1.92  
 Prof: 394 to 326207, NumProf(t/r): 325813/12802  
 ProcTime/Recs: 15:39:37-15:45:45/76812-89613  
 MxACQtime: 33ms; DRate: 146.9KB/s; Flags: 0, 0, 0  
 Pulse: 275ns, IFfilt: 5.0MHz; ppPol: HH HV VV  
 TxPol: HHVV, PRF: 20 10 20 10 kHz  
 Range: Delay 75m, Spacing 15m, Gates 75  
 Ave. Pulses: 84, Rng/Prof Aspect@90m/s: 5.8

	Min	Max	Mean	Std	Var%
hhN(dB)	-67.29	-62.31	-65.33	-74.66	11.7
vvN(dB)	-67.26	-62.69	-65.60	-74.85	11.9
hhL(dB)	-11.17	-4.39	-8.86	-17.68	13.1
vvL(dB)	-4.04	-0.37	-2.00	-11.41	11.4
ppN(m/s)	-12.62	12.40	0.11	4.13	
ppT(m/s)	-99.70	97.99	0.91	32.59	
hh/vv(dB)	-NaN	40.31	7.99	20.90	1951
vh/hh(dB)	-NaN	-28.52	-35.77	-36.13	92.0
hv/vv(dB)	-NaN	-30.06	-50.05	-44.84	331.
hnjmp(dB)	-2.29	2.42	-0.07	-8.69	13.7
vnjmp(dB)	-2.20	2.12	-0.08	-8.63	14.0