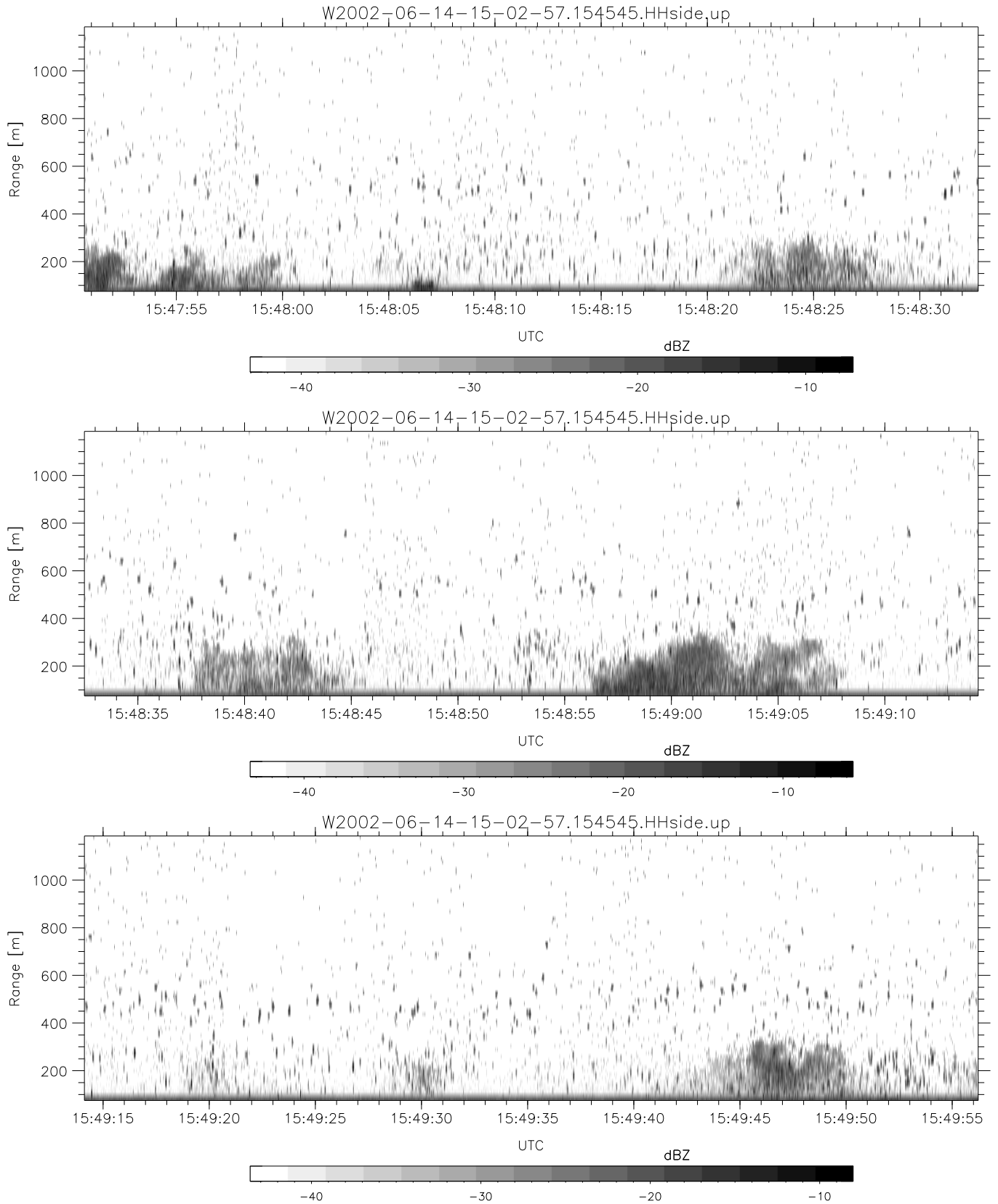


IHOP 2002 (dual-antenna config, modes 1,3,4,7) Data (cal: 49.0,50.0)

W2002-06-14-15-02-57 - PPMAG4  
 IRIG:1,UTC: 15:02:52.11 to 17:39:16.80, Dur: 9384s  
 TimeLngth: 9384.69s, TimeInt: 28ms (34.7pps)  
 TimeCor=-13.0s, DSPDif(mn,min,mx):28,28,240  
 PPS(min,max,std): 28,36,1.59  
 Prof: 394 to 326207, NumProf(t/r): 325813/12802  
 ProcTime/Recs: 15:45:45-15:51:52/89614-102415  
 MxACQtime: 33ms; DRate: 146.9KB/s; Flags: 0, 0, 0  
 Pulse: 275ns, IFilt: 5.0MHz; ppPol: HH HV VV  
 TxPol: HHVV, PRF: 20 10 20 10 kHz  
 Range: Delay 75m, Spacing 15m, Gates 75  
 Ave. Pulses: 84, Rng/Prof Aspect@90m/s: 5.8

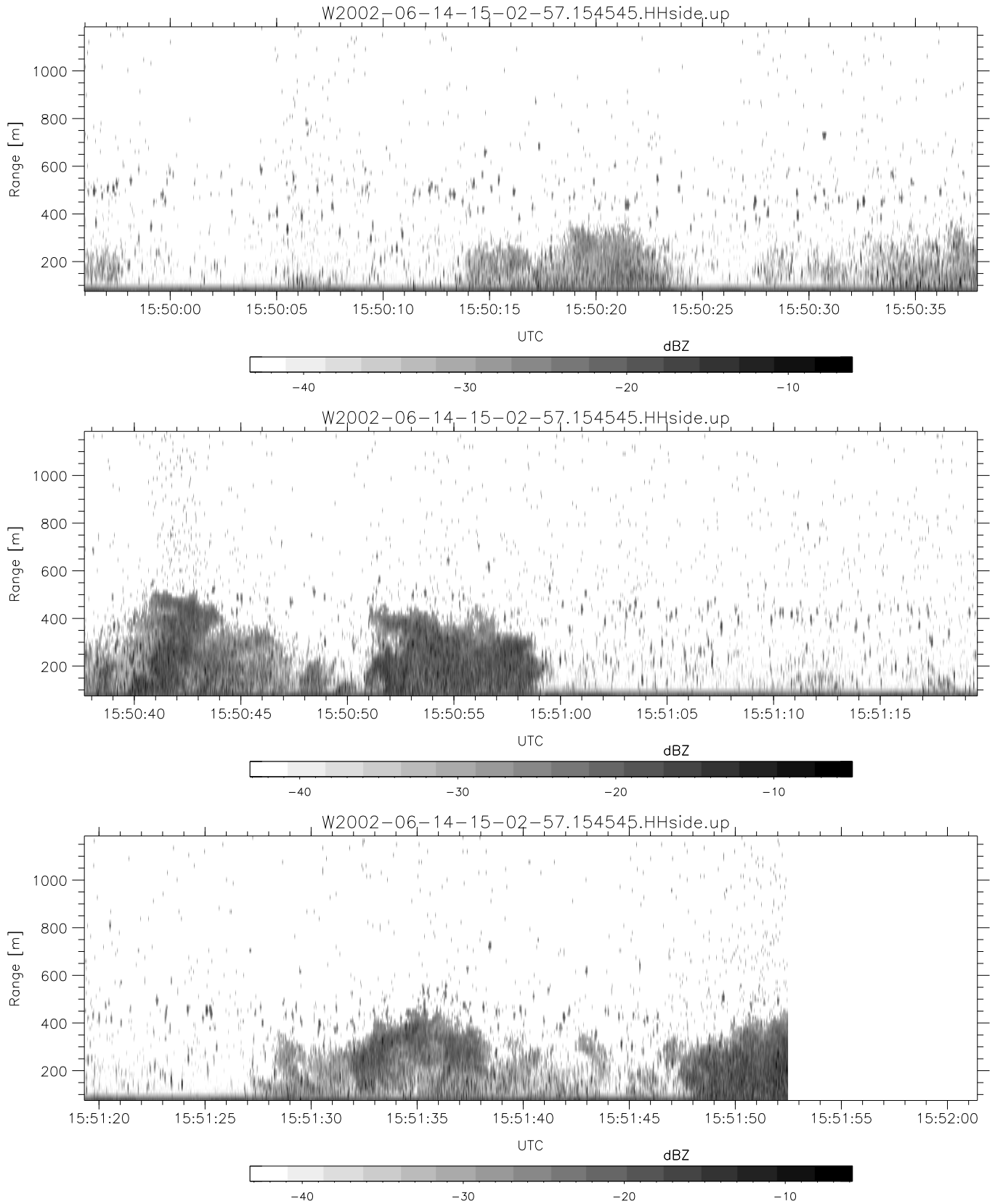
	Min	Max	Mean	Std	Varc%
hhN(dB)	-67.20	-63.66	-65.39	-75.43	9.9
vvN(dB)	-67.50	-64.18	-65.68	-75.73	9.9
hhL(dB)	-11.53	-4.42	-8.88	-17.17	14.8
vvL(dB)	-4.16	-0.18	-2.08	-11.59	11.2
ppN(m/s)	-12.52	12.29	0.03	4.15	
ppT(m/s)	-98.88	97.07	0.22	32.79	
hh/vv(dB)	-NaN	45.49	10.71	29.36	7320
vh/hh(dB)	-NaN	-30.63	-34.59	-35.84	75.1
hv/vv(dB)	-NaN	-31.69	-49.93	-45.86	255.5
hnjmp(dB)	-2.42	2.30	-0.08	-8.59	14.1
vnjmp(dB)	-2.27	2.19	-0.07	-8.57	14.1



IHOP 2002 (dual-antenna config, modes 1,3,4,7) Data (cal: 49.0,50.0)

W2002-06-14-15-02-57 - PPMAG4  
 IRIG:1,UTC: 15:02:52.11 to 17:39:16.80, Dur: 9384s  
 TimeLngth: 9384.69s, TimeInt: 28ms (34.7pps)  
 TimeCor=-13.0s, DSPDif(mn,min,mx):28,28,240  
 PPS(min,max,std): 28,36,1.59  
 Prof: 394 to 326207, NumProf(t/r): 325813/12802  
 ProcTime/Recs: 15:45:45-15:51:52/89614-102415  
 MxAcQtime: 33ms; DRate: 146.9KB/s; Flags: 0, 0, 0  
 Pulse: 275ns, IFfilt: 5.0MHz; ppPol: HH HV VV  
 TxPol: HHVV, PRF: 20 10 20 10 kHz  
 Range: Delay 75m, Spacing 15m, Gates 75  
 Ave. Pulses: 84, Rng/Prof Aspect@90m/s: 5.8

	Min	Max	Mean	Std	Varc%
hhN(dB)	-67.20	-63.66	-65.39	-75.43	9.9
vvN(dB)	-67.50	-64.18	-65.68	-75.73	9.9
hhL(dB)	-11.53	-4.42	-8.88	-17.17	14.8
vvL(dB)	-4.16	-0.18	-2.08	-11.59	11.2
ppN(m/s)	-12.52	12.29	0.03	4.15	
ppT(m/s)	-98.88	97.07	0.22	32.79	
hh/vv(dB)	-NaN	45.49	10.71	29.36	7320
vh/hh(dB)	-NaN	-30.63	-34.59	-35.84	75.1
hv/vv(dB)	-NaN	-31.69	-49.93	-45.86	255.1
hnjmp(dB)	-2.42	2.30	-0.08	-8.59	14.1
vnjmp(dB)	-2.27	2.19	-0.07	-8.57	14.1



IHOP 2002 (dual-antenna config, modes 1,3,4,7) Data (cal: 49.0,50.0)

	Min	Max	Mean	Std	Varc%
W2002-06-14-15-02-57 - PPMAG4					
IRIG:1,UTC: 15:02:52.11 to 17:39:16.80, Dur: 9384s					
TimeLngth: 9384.69s, TimeInt: 28ms (34.7pps)					
TimeCor=-13.0s, DSPDif(mn,min,mx):28,28,240					
PPS(min,max,std): 28,36,1.59					
Prof: 394 to 326207, NumProf(t/r): 325813/12802	hhN(dB)	-67.20 -63.66	-65.39	-75.43	9.9
ProcTime/Recs: 15:45:45-15:51:52/89614-102415	vvN(dB)	-67.50 -64.18	-65.68	-75.73	9.9
MxAcQtime: 33ms; DRate: 146.9KB/s; Flags: 0, 0, 0	hhL(dB)	-11.53 -4.42	-8.88	-17.17	14.8
Pulse: 275ns, IFilt: 5.0MHz; ppPol: HH HV VV	vvL(dB)	-4.16 -0.18	-2.08	-11.59	11.2
TxPol: HHVV, PRF: 20 10 20 10 kHz	ppN(m/s)	-12.52 12.29	0.03	4.15	
Range: Delay 75m, Spacing 15m, Gates 75	ppT(m/s)	-98.88 97.07	0.22	32.79	
Ave. Pulses: 84, Rng/Prof Aspect@90m/s: 5.8	hh/vv(dB)	-NaN 45.49	10.71	29.36	7320
	vh/hh(dB)	-NaN -30.63	-34.59	-35.84	75.1
	hv/vv(dB)	-NaN -31.69	-49.93	-45.86	255.
	hn_jmp(dB)	-2.42 2.30	-0.08	-8.59	14.1
	vn_jmp(dB)	-2.27 2.19	-0.07	-8.57	14.1