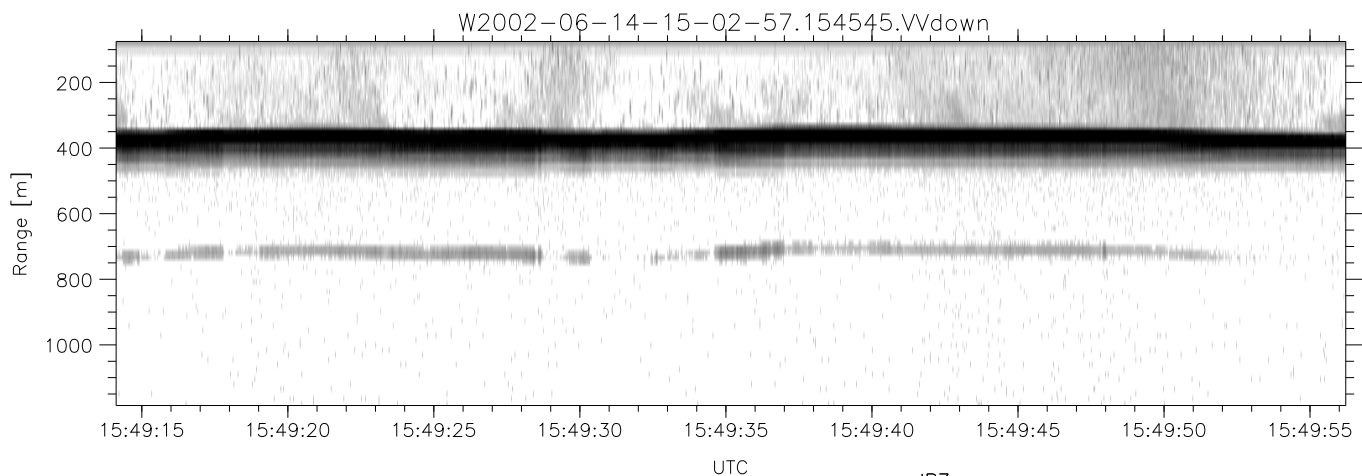
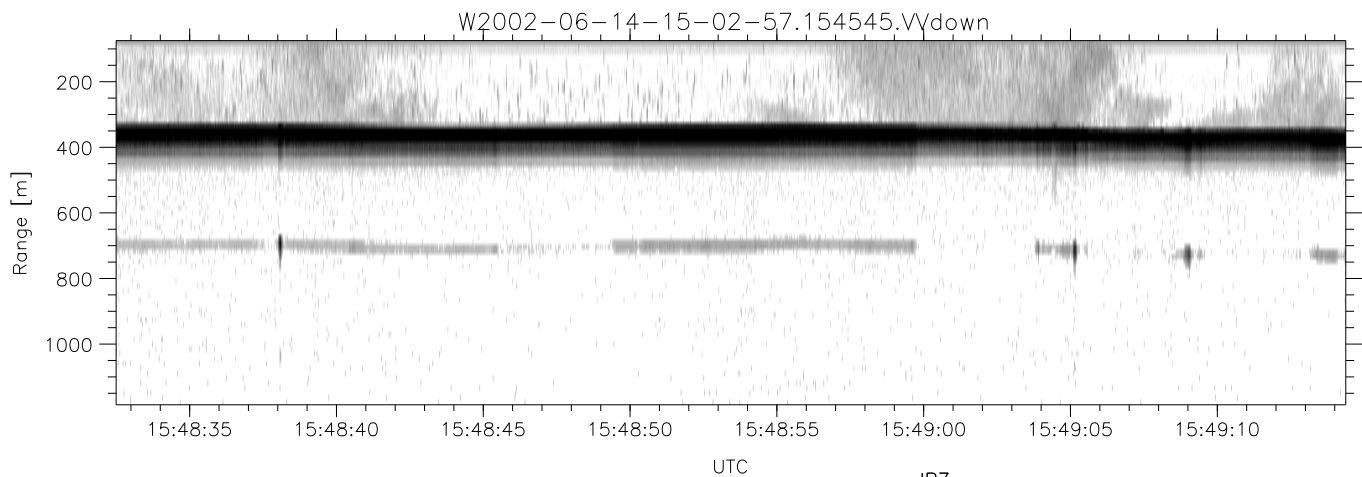
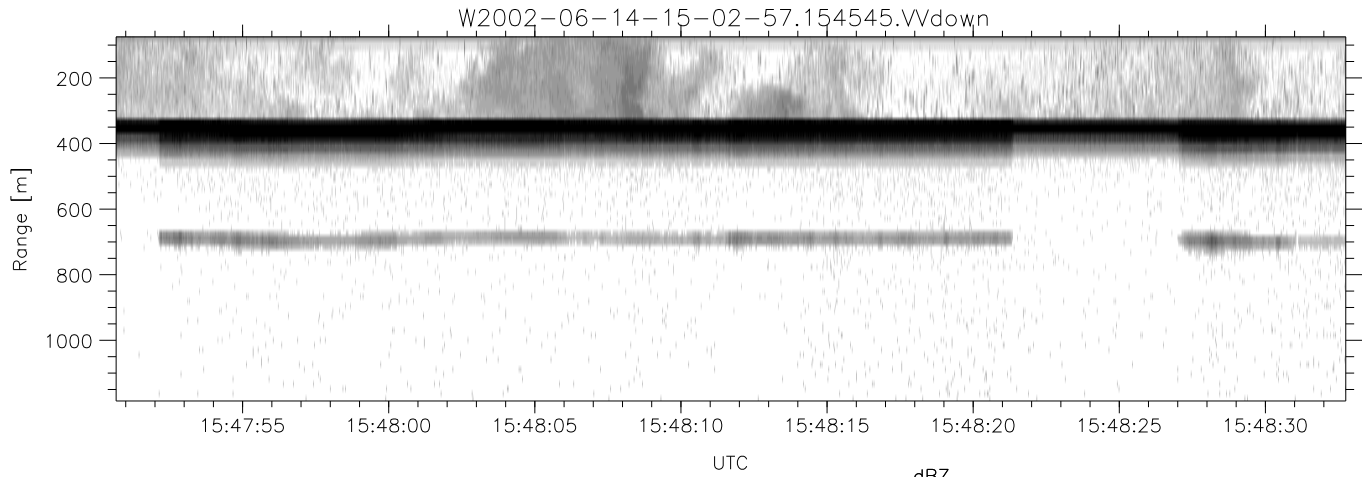


IHOP 2002 (dual-antenna config, modes 1,3,4,7) Data (cal: 49.0,50.0)

W2002-06-14-15-02-57 - PPMAG4
 IRIG:1,UTC: 15:02:52.11 to 17:39:16.80, Dur: 9384s
 TimeLngth: 9384.69s, TimeInt: 28ms (34.7pps)
 TimeCor=-13.0s, DSPDif(mn,min,mx):28,28,240
 PPS(min,max,std): 28,36,1.59
 Prof: 394 to 326207, NumProf(t/r): 325813/12802
 ProcTime/Recs: 15:45:45-15:51:52/89614-102415
 MxACQtime: 33ms; DRate: 146.9KB/s; Flags: 0, 0, 0
 Pulse: 275ns, IFilt: 5.0MHz; ppPol: HH HV VV
 TxPol: HHVV, PRF: 20 10 20 10 kHz
 Range: Delay 75m, Spacing 15m, Gates 75
 Ave. Pulses: 84, Rng/Prof Aspect@90m/s: 5.8

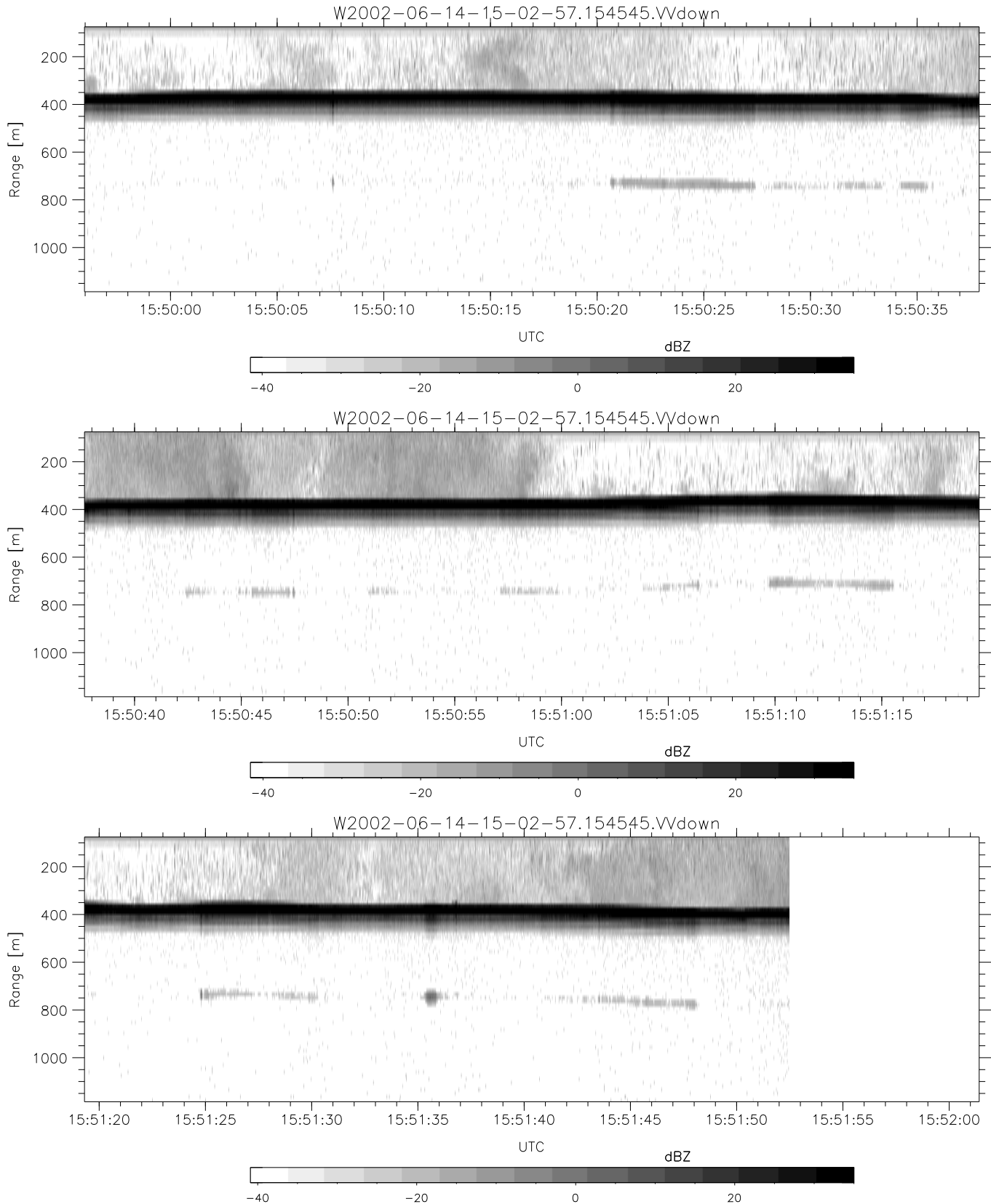
	Min	Max	Mean	Std	Varc%
hhN(dB)	-67.20	-63.66	-65.39	-75.43	9.9
vvN(dB)	-67.50	-64.18	-65.68	-75.73	9.9
hhL(dB)	-11.53	-4.42	-8.88	-17.17	14.8
vvL(dB)	-4.16	-0.18	-2.08	-11.59	11.2
ppN(m/s)	-12.52	12.29	0.03	4.15	
ppT(m/s)	-98.88	97.07	0.22	32.79	
hh/vv(dB)	-NaN	45.49	10.71	29.36	7320
vh/hh(dB)	-NaN	-30.63	-34.59	-35.84	75.1
hv/vv(dB)	-NaN	-31.69	-49.93	-45.86	255.
hnjmp(dB)	-2.42	2.30	-0.08	-8.59	14.1
vnjmp(dB)	-2.27	2.19	-0.07	-8.57	14.1



IHOP 2002 (dual-antenna config, modes 1,3,4,7) Data (cal: 49.0,50.0)

W2002-06-14-15-02-57 - PPMAG4
 IRIG:1,UTC: 15:02:52.11 to 17:39:16.80, Dur: 9384s
 TimeLngth: 9384.69s, TimeInt: 28ms (34.7pps)
 TimeCor=-13.0s, DSPDif(mn,min,mx):28,28,240
 PPS(min,max,std): 28,36,1.59
 Prof: 394 to 326207, NumProf(t/r): 325813/12802
 ProcTime/Recs: 15:45:45-15:51:52/89614-102415
 MxAcQtime: 33ms; DRate: 146.9KB/s; Flags: 0, 0, 0
 Pulse: 275ns, IFilt: 5.0MHz; ppPol: HH HV VV
 TxPol: HHVV, PRF: 20 10 20 10 kHz
 Range: Delay 75m, Spacing 15m, Gates 75
 Ave. Pulses: 84, Rng/Prof Aspect@90m/s: 5.8

	Min	Max	Mean	Std	Varc%
hhN(dB)	-67.20	-63.66	-65.39	-75.43	9.9
vvN(dB)	-67.50	-64.18	-65.68	-75.73	9.9
hhL(dB)	-11.53	-4.42	-8.88	-17.17	14.8
vvL(dB)	-4.16	-0.18	-2.08	-11.59	11.2
ppN(m/s)	-12.52	12.29	0.03	4.15	
ppT(m/s)	-98.88	97.07	0.22	32.79	
hh/vv(dB)	-NaN	45.49	10.71	29.36	7320
vh/hh(dB)	-NaN	-30.63	-34.59	-35.84	75.1
hv/vv(dB)	-NaN	-31.69	-49.93	-45.86	255.1
hnjmp(dB)	-2.42	2.30	-0.08	-8.59	14.1
vnjmp(dB)	-2.27	2.19	-0.07	-8.57	14.1



IHOP 2002 (dual-antenna config, modes 1,3,4,7) Data (cal: 49.0,50.0)

W2002-06-14-15-02-57 - PPMAG4
 IRIG:1,UTC: 15:02:52.11 to 17:39:16.80, Dur: 9384s
 TimeLngth: 9384.69s, TimeInt: 28ms (34.7pps)
 TimeCor=-13.0s, DSPDif(mn,min,mx):28,28,240
 PPS(min,max,std): 28,36,1.59
 Prof: 394 to 326207, NumProf(t/r): 325813/12802
 ProcTime/Recs: 15:45:45-15:51:52/89614-102415
 MxACQtime: 33ms; DRate: 146.9KB/s; Flags: 0, 0, 0
 Pulse: 275ns, IFilt: 5.0MHz; ppPol: HH HV VV
 TxPol: HHVV, PRF: 20 10 20 10 kHz
 Range: Delay 75m, Spacing 15m, Gates 75
 Ave. Pulses: 84, Rng/Prof Aspect@90m/s: 5.8

	Min	Max	Mean	Std	Varc%
hhN (dB)	-67.20	-63.66	-65.39	-75.43	9.9
vvN (dB)	-67.50	-64.18	-65.68	-75.73	9.9
hhL (dB)	-11.53	-4.42	-8.88	-17.17	14.8
vvL (dB)	-4.16	-0.18	-2.08	-11.59	11.2
ppN (m/s)	-12.52	12.29	0.03	4.15	
ppT (m/s)	-98.88	97.07	0.22	32.79	
hh/vv (dB)	-NaN	45.49	10.71	29.36	7320
vh/hh (dB)	-NaN	-30.63	-34.59	-35.84	75.1
hv/vv (dB)	-NaN	-31.69	-49.93	-45.86	255.
hnjmp (dB)	-2.42	2.30	-0.08	-8.59	14.1
vnjmp (dB)	-2.27	2.19	-0.07	-8.57	14.1