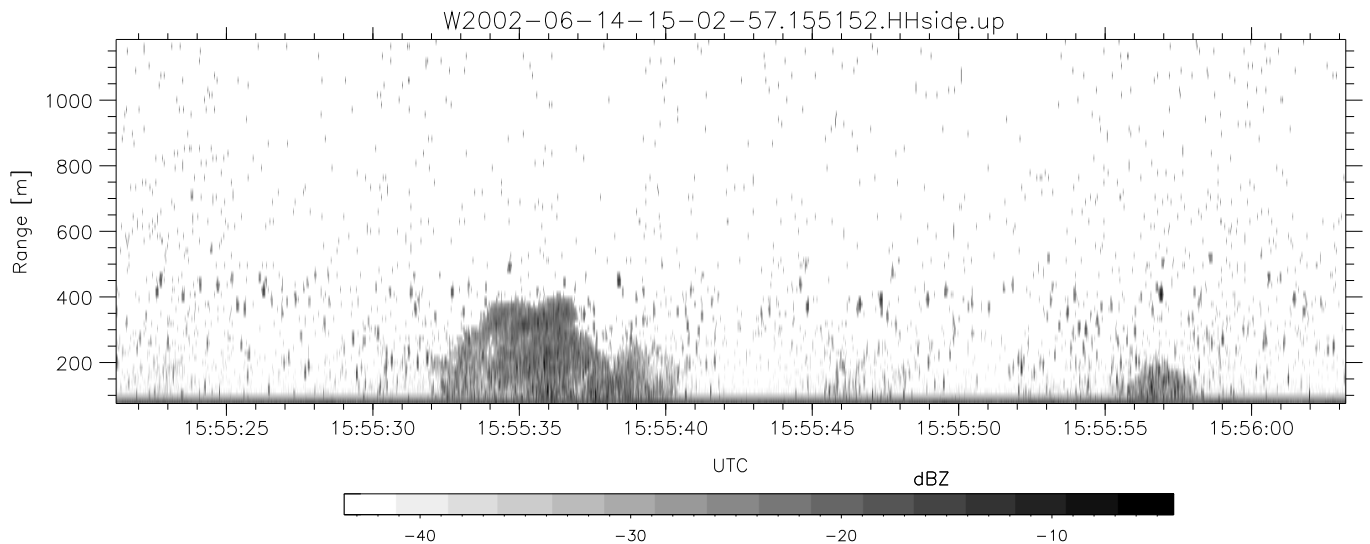
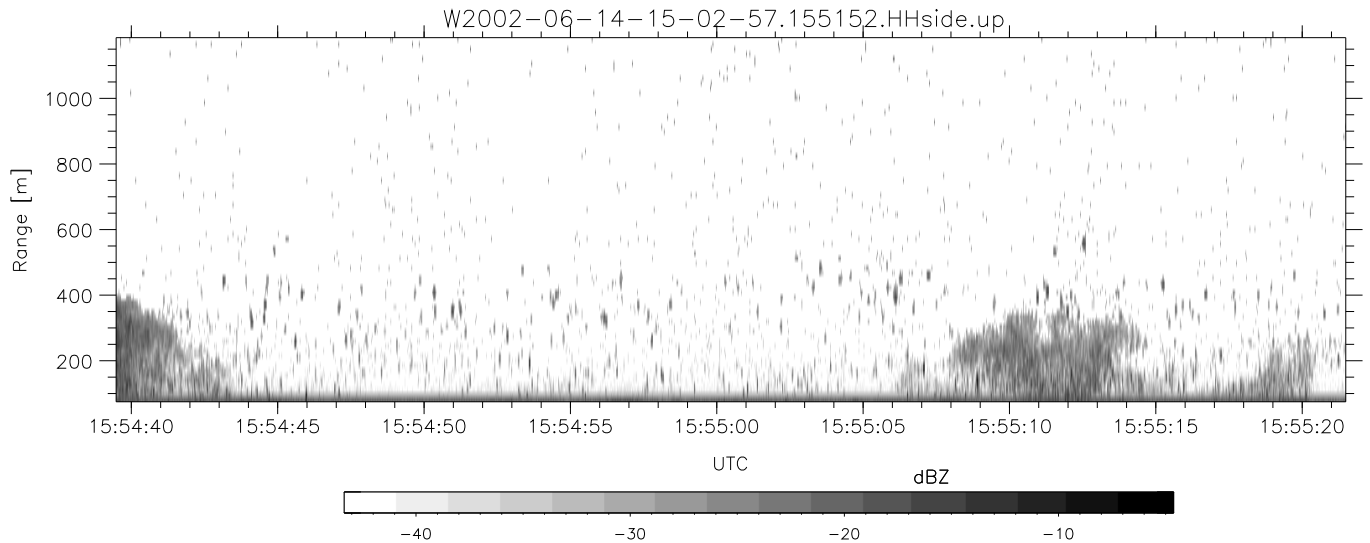
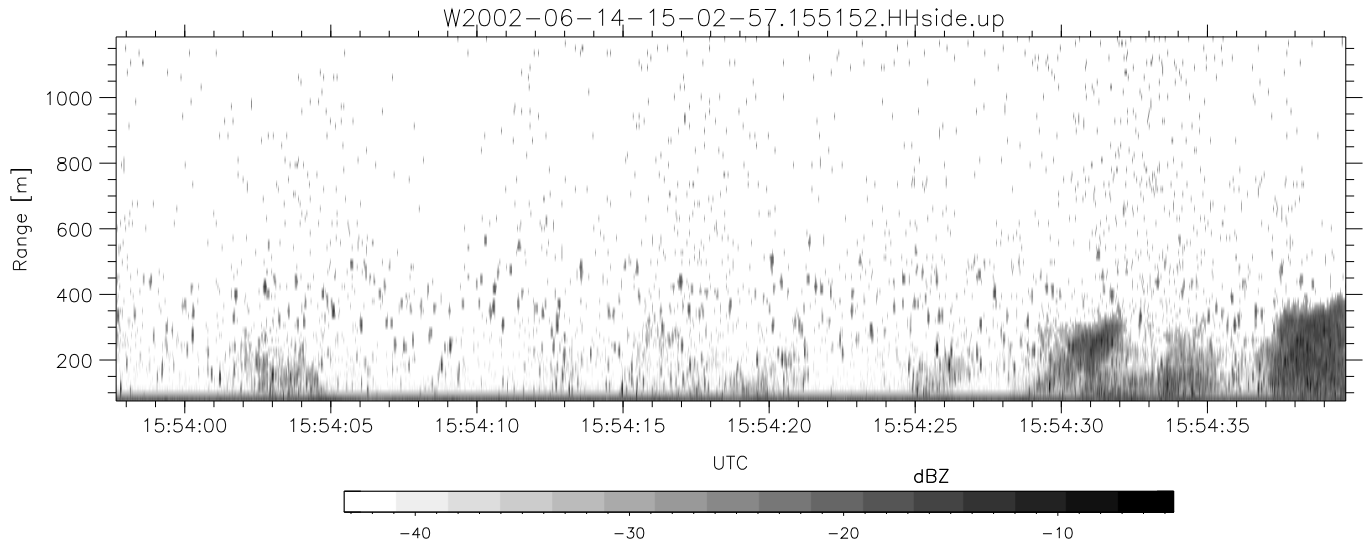


IHOP 2002 (dual-antenna config, modes 1,3,4,7) Data (cal: 49.0,50.0)

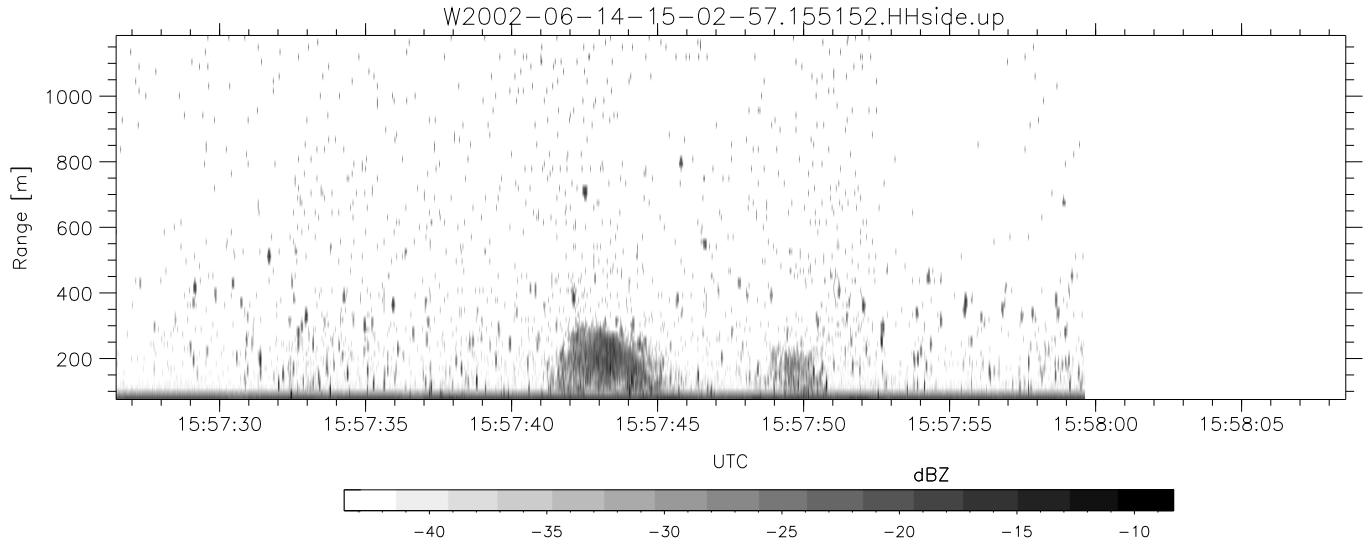
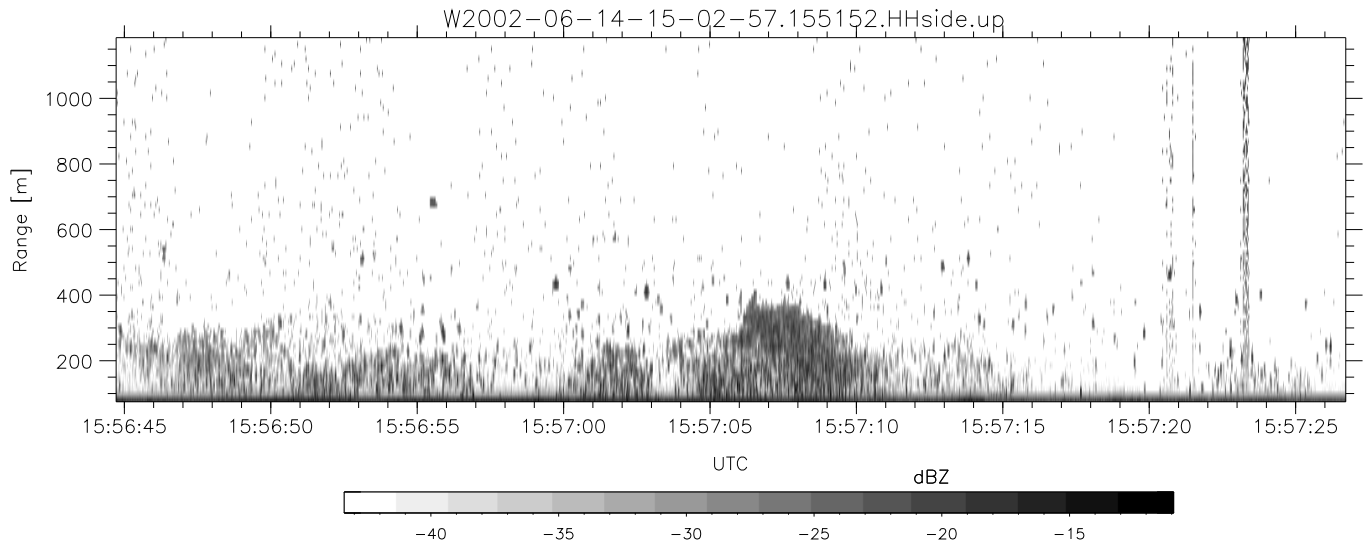
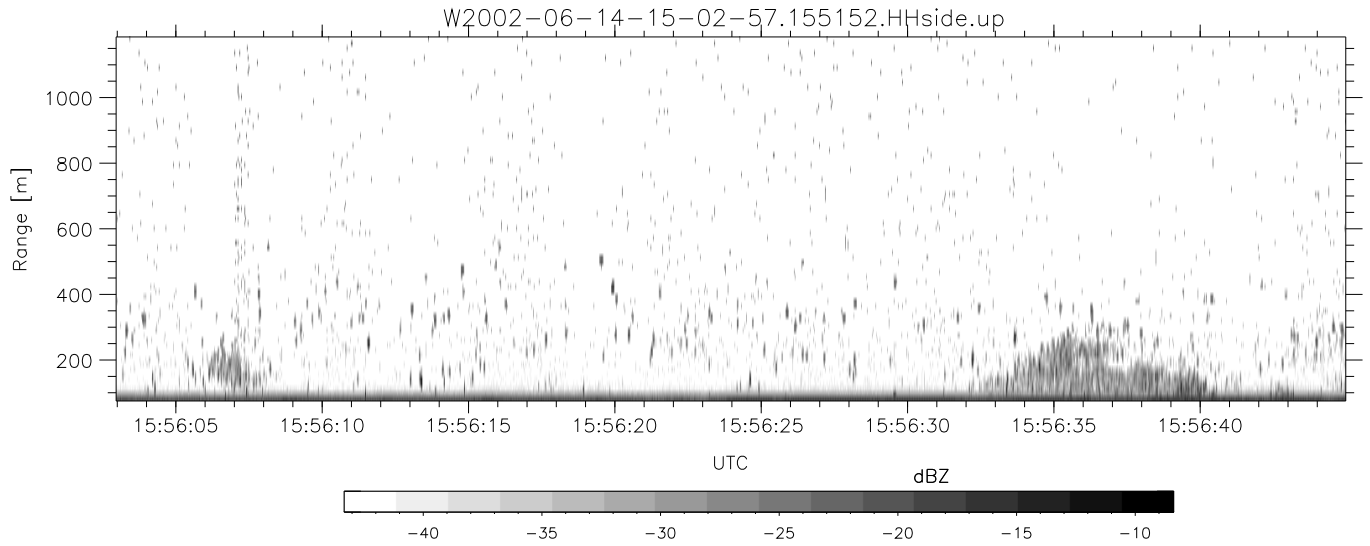
W2002-06-14-15-02-57 - PPMAG4
 IRIG:1,UTC: 15:02:52.11 to 17:39:16.80, Dur: 9384s
 TimeLngth: 9384.69s, TimeInt: 28ms (34.7pps)
 TimeCor=-13.0s, DSPDif(mn,min,mx):28,28,234
 PPS(min,max,std): 28,36,1.62
 Prof: 394 to 326207, NumProf(t/r): 325813/12802
 ProcTime/Recs: 15:51:52-15:57:59/102416-115217
 MxACQtime: 33ms; DRate: 146.9KB/s; Flags: 0, 0, 0
 Pulse: 275ns, IFilt: 5.0MHz; ppPol: HH HV VV
 TxPol: HHVV, PRF: 20 10 20 10 kHz
 Range: Delay 75m, Spacing 15m, Gates 75
 Ave. Pulses: 84, Rng/Prof Aspect@90m/s: 5.8

	Min	Max	Mean	Std	Varc%
hhN(dB)	-67.17	-62.61	-65.40	-75.21	10.5
vvN(dB)	-67.37	-61.98	-65.65	-75.21	11.1
hhL(dB)	-11.90	-4.49	-8.80	-16.57	16.7
vvL(dB)	-4.40	-0.44	-2.16	-11.16	12.6
ppN(m/s)	-12.56	12.00	0.07	4.19	
ppT(m/s)	-99.20	94.82	0.54	33.10	
hh/vv(dB)	-NaN	43.98	11.58	23.79	1661
vh/hh(dB)	-NaN	-29.54	-35.80	-36.10	93.2
hv/vv(dB)	-NaN	-31.11	-50.45	-45.76	294.
hnjmp(dB)	-2.14	2.38	-0.08	-8.68	13.8
vnjmp(dB)	-2.49	2.17	-0.07	-8.65	13.9



IHOP 2002 (dual-antenna config, modes 1,3,4,7) Data (cal: 49.0,50.0)

	Min	Max	Mean	Std	Varc%
W2002-06-14-15-02-57 - PPMAG4					
IRIG:1,UTC: 15:02:52.11 to 17:39:16.80, Dur: 9384s					
TimeLngth: 9384.69s, TimeInt: 28ms (34.7pps)					
TimeCor=-13.0s, DSPDif(mn,min,mx):28,28,234					
PPS(min,max,std): 28,36,1.62					
Prof: 394 to 326207, NumProf(t/r): 325813/12802					
ProcTime/Recs: 15:51:52-15:57:59/102416-115217					
MxACQtime: 33ms; DRate: 146.9KB/s; Flags: 0, 0, 0					
Pulse: 275ns, IFfilt: 5.0MHz; ppPol: HH HV VV					
TxPol: HHVV, PRF: 20 10 20 10 kHz					
Range: Delay 75m, Spacing 15m, Gates 75					
Ave. Pulses: 84, Rng/Prof Aspect@90m/s: 5.8					
hhN(dB)	-67.17	-62.61	-65.40	-75.21	10.5
vvN(dB)	-67.37	-61.98	-65.65	-75.21	11.1
hhL(dB)	-11.90	-4.49	-8.80	-16.57	16.7
vvL(dB)	-4.40	-0.44	-2.16	-11.16	12.6
ppN(m/s)	-12.56	12.00	0.07	4.19	
ppT(m/s)	-99.20	94.82	0.54	33.10	
hh/vv(dB)	-NaN	43.98	11.58	23.79	1661
vh/hh(dB)	-NaN	-29.54	-35.80	-36.10	93.2
hv/vv(dB)	-NaN	-31.11	-50.45	-45.76	294.
hnjmp(dB)	-2.14	2.38	-0.08	-8.68	13.8
vnjmp(dB)	-2.49	2.17	-0.07	-8.65	13.9



IHOP 2002 (dual-antenna config, modes 1,3,4,7) Data (cal: 49.0,50.0)

	Min	Max	Mean	Std	Varc%
W2002-06-14-15-02-57 - PPMAG4					
IRIG:1,UTC: 15:02:52.11 to 17:39:16.80, Dur: 9384s					
TimeLngth: 9384.69s, TimeInt: 28ms (34.7pps)					
TimeCor=-13.0s, DSPDif(mn,min,mx):28,28,234					
PPS(min,max,std): 28,36,1.62					
Prof: 394 to 326207, NumProf(t/r): 325813/12802					
ProcTime/Recs: 15:51:52-15:57:59/102416-115217					
MxACQtime: 33ms; DRate: 146.9KB/s; Flags: 0, 0, 0					
Pulse: 275ns, IFfilt: 5.0MHz; ppPol: HH HV VV					
TxPol: HHVV, PRF: 20 10 20 10 kHz					
Range: Delay 75m, Spacing 15m, Gates 75					
Ave. Pulses: 84, Rng/Prof Aspect@90m/s: 5.8					
hhN(dB)	-67.17	-62.61	-65.40	-75.21	10.5
vvN(dB)	-67.37	-61.98	-65.65	-75.21	11.1
hhL(dB)	-11.90	-4.49	-8.80	-16.57	16.7
vvL(dB)	-4.40	-0.44	-2.16	-11.16	12.6
ppN(m/s)	-12.56	12.00	0.07	4.19	
ppT(m/s)	-99.20	94.82	0.54	33.10	
hh/vv(dB)	-NaN	43.98	11.58	23.79	1661
vh/hh(dB)	-NaN	-29.54	-35.80	-36.10	93.2
hv/vv(dB)	-NaN	-31.11	-50.45	-45.76	294.
hnjmp(dB)	-2.14	2.38	-0.08	-8.68	13.8
vnjmp(dB)	-2.49	2.17	-0.07	-8.65	13.9