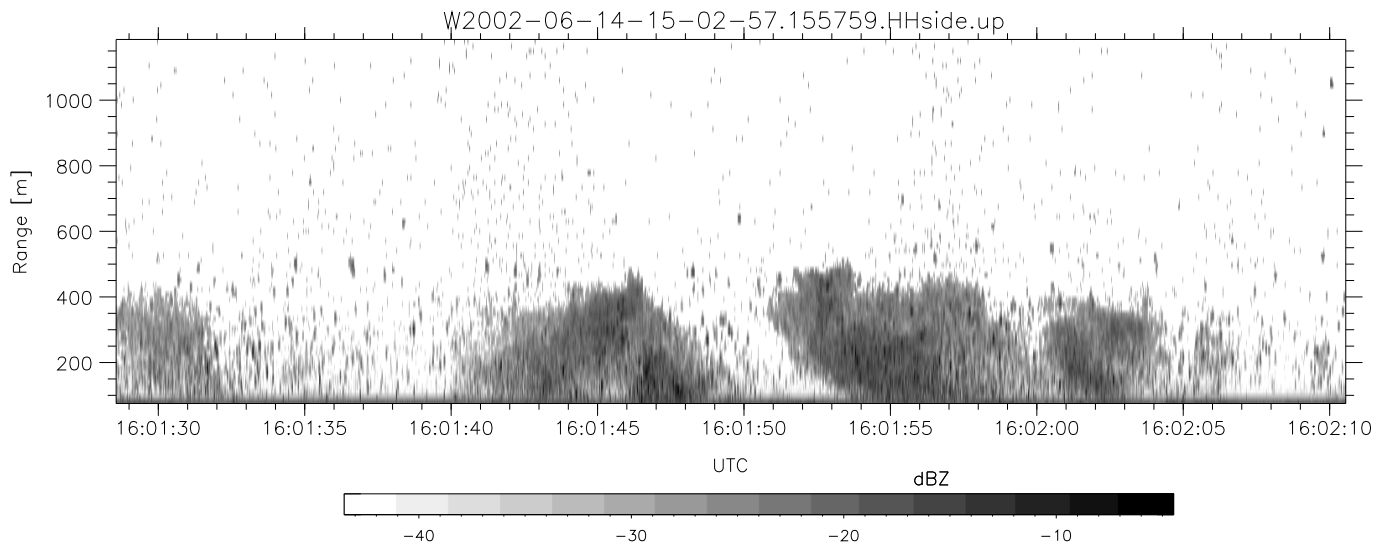
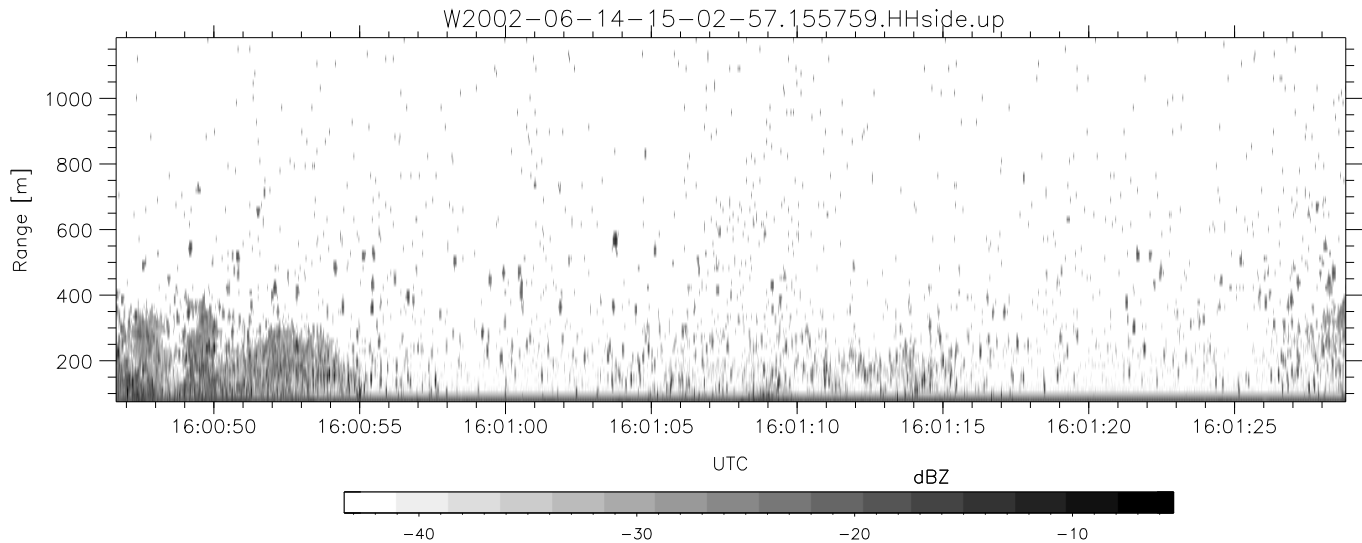
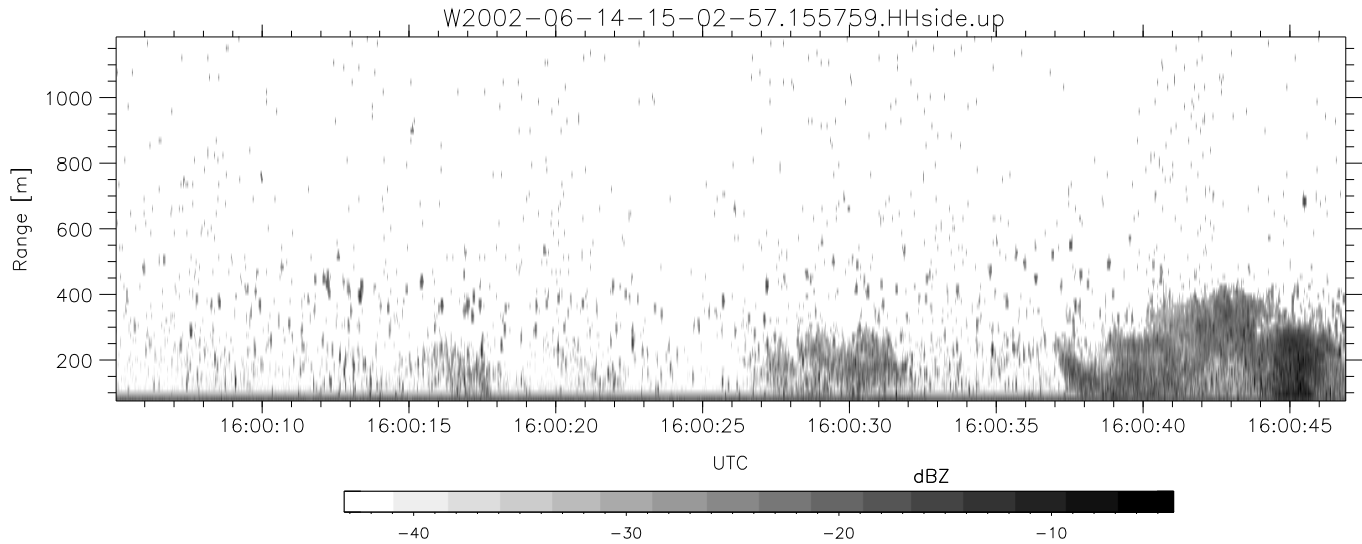


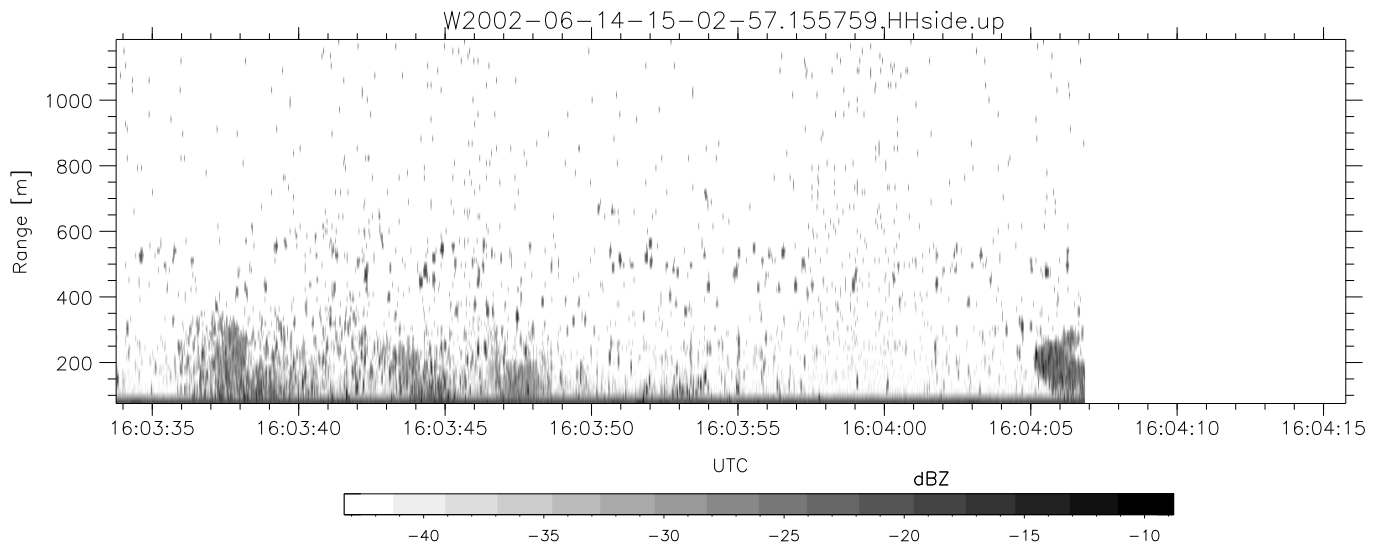
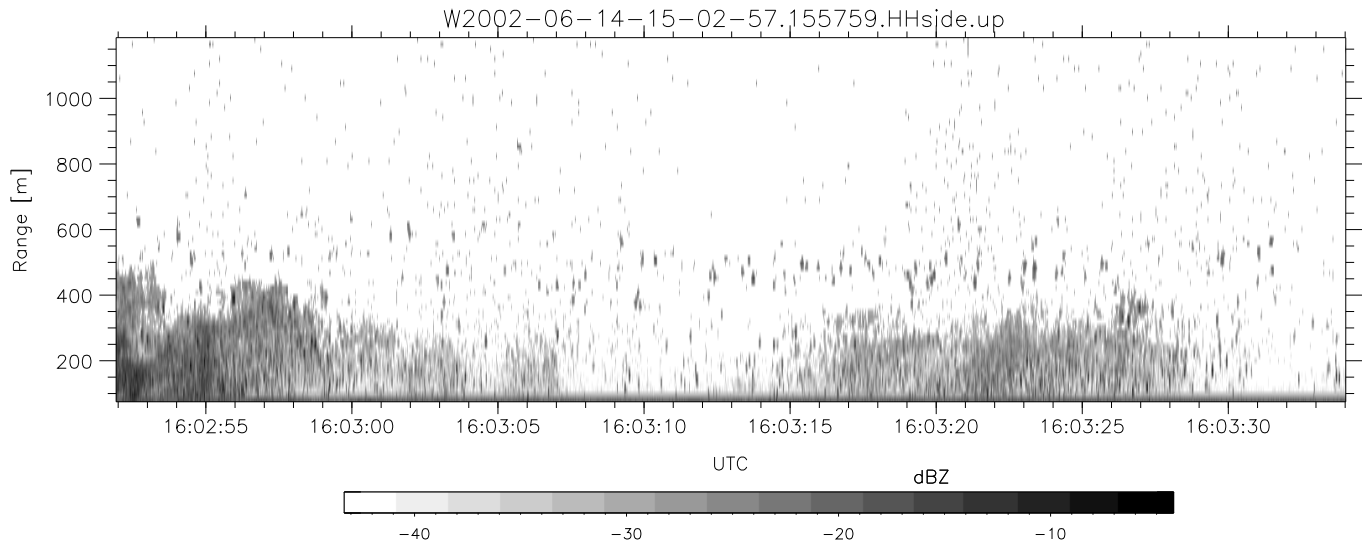
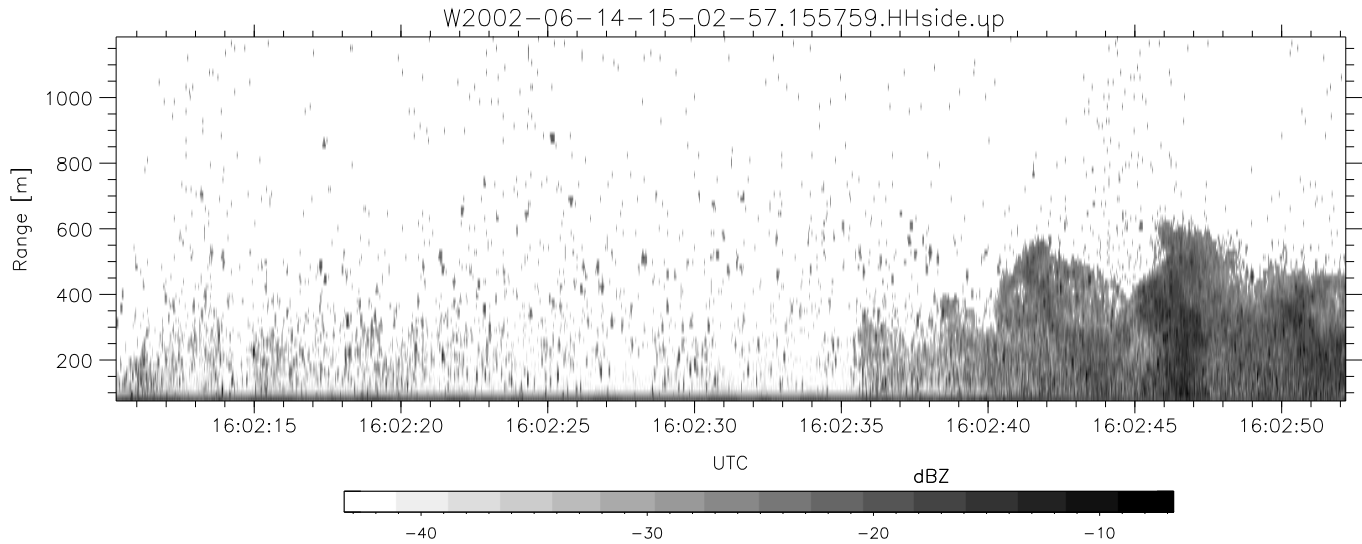
IHOP 2002 (dual-antenna config, modes 1,3,4,7) Data (cal: 49.0,50.0)

W2002-06-14-15-02-57 - PPMAG4	Min	Max	Mean	Std	Varc%
IRIG:1,UTC: 15:02:52.11 to 17:39:16.80, Dur: 9384s	-67.30	-63.90	-65.43	-75.49	9.9
TimeLngth: 9384.69s, TimeInt: 28ms (34.7pps)	-67.50	-64.06	-65.69	-75.72	9.9
TimeCor=-13.0s, DSPDif(mn,min,mx):28,28,240	-11.43	-5.29	-8.97	-17.52	14.0
PPS(min,max,std): 28,36,1.66	-4.51	-0.43	-2.25	-11.67	11.4
Prof: 394 to 326207, NumProf(t/r): 325813/12802	ppN(m/s)	-12.43	12.12	-0.02	4.16
ProcTime/Recs: 15:57:59-16:04:06/115218-128019	ppT(m/s)	-98.18	95.74	-0.17	32.87
MxACQtime: 33ms; DRate: 146.9KB/s; Flags: 0, 0, 0	hh/vv(dB)	-NaN	39.57	8.95	25.21 4221
Pulse: 275ns, IFfilt: 5.0MHz; ppPol: HH HV VV	vh/hh(dB)	-NaN	-30.08	-35.27	-35.87 87.2
TxPol: HHVV, PRF: 20 10 20 10 kHz	hv/vv(dB)	-NaN	-31.36	-50.84	-46.50 271.
Range: Delay 75m, Spacing 15m, Gates 75	hnjmp(dB)	-2.76	2.56	-0.07	-8.60 14.0
Ave. Pulses: 84, Rng/Prof Aspect@90m/s: 5.8	vnjmp(dB)	-2.25	2.03	-0.07	-8.61 14.0



IHOP 2002 (dual-antenna config, modes 1,3,4,7) Data (cal: 49.0,50.0)

	Min	Max	Mean	Std	Varc%
W2002-06-14-15-02-57 - PPMAG4					
IRIG:1,UTC: 15:02:52.11 to 17:39:16.80, Dur: 9384s	hhN (dB)	-67.30 -63.90	-65.43	-75.49	9.9
TimeLngth: 9384.69s, TimeInt: 28ms (34.7pps)	vvN (dB)	-67.50 -64.06	-65.69	-75.72	9.9
TimeCor=-13.0s, DSPDif(mn,min,mx):28,28,240	hhL (dB)	-11.43 -5.29	-8.97	-17.52	14.0
PPS(min,max,std): 28,36,1.66	vvL (dB)	-4.51 -0.43	-2.25	-11.67	11.4
Prof: 394 to 326207, NumProf(t/r): 325813/12802	ppN (m/s)	-12.43 12.12	-0.02	4.16	
ProcTime/Recs: 15:57:59-16:04:06/115218-128019	ppT (m/s)	-98.18 95.74	-0.17	32.87	
MxAcQtime: 33ms; DRate: 146.9KB/s; Flags: 0, 0, 0	hh/vv (dB)	-NaN 39.57	8.95	25.21	4221
Pulse: 275ns, IFilt: 5.0MHz; ppPol: HH HV VV	vh/hh (dB)	-NaN -30.08	-35.27	-35.87	87.2
TxPol: HHVV, PRF: 20 10 20 10 kHz	hv/vv (dB)	-NaN -31.36	-50.84	-46.50	271.
Range: Delay 75m, Spacing 15m, Gates 75	hnjmp (dB)	-2.76 2.56	-0.07	-8.60	14.0
Ave. Pulses: 84, Rng/Prof Aspect@90m/s: 5.8	vnjmp (dB)	-2.25 2.03	-0.07	-8.61	14.0



IHOP 2002 (dual-antenna config, modes 1,3,4,7) Data (cal: 49.0,50.0)

W2002-06-14-15-02-57 - PPMAG4  
 IRIG:1,UTC: 15:02:52.11 to 17:39:16.80, Dur: 9384s  
 TimeLngth: 9384.69s, TimeInt: 28ms (34.7pps)  
 TimeCor=-13.0s, DSPDif(mn,min,mx):28,28,240  
 PPS(min,max,std): 28,36,1.66  
 Prof: 394 to 326207, NumProf(t/r): 325813/12802  
 ProcTime/Recs: 15:57:59-16:04:06/115218-128019  
 MxACQtime: 33ms; DRate: 146.9KB/s; Flags: 0, 0, 0  
 Pulse: 275ns, IFfilt: 5.0MHz; ppPol: HH HV VV  
 TxPol: HHVV, PRF: 20 10 20 10 kHz  
 Range: Delay 75m, Spacing 15m, Gates 75  
 Ave. Pulses: 84, Rng/Prof Aspect@90m/s: 5.8

	Min	Max	Mean	Std	Varc%
hhN(dB)	-67.30	-63.90	-65.43	-75.49	9.9
vvN(dB)	-67.50	-64.06	-65.69	-75.72	9.9
hhL(dB)	-11.43	-5.29	-8.97	-17.52	14.0
vvL(dB)	-4.51	-0.43	-2.25	-11.67	11.4
ppN(m/s)	-12.43	12.12	-0.02	4.16	
ppT(m/s)	-98.18	95.74	-0.17	32.87	
hh/vv(dB)	-NaN	39.57	8.95	25.21	4221
vh/hh(dB)	-NaN	-30.08	-35.27	-35.87	87.2
hv/vv(dB)	-NaN	-31.36	-50.84	-46.50	271.
hnjmp(dB)	-2.76	2.56	-0.07	-8.60	14.0
vnjmp(dB)	-2.25	2.03	-0.07	-8.61	14.0