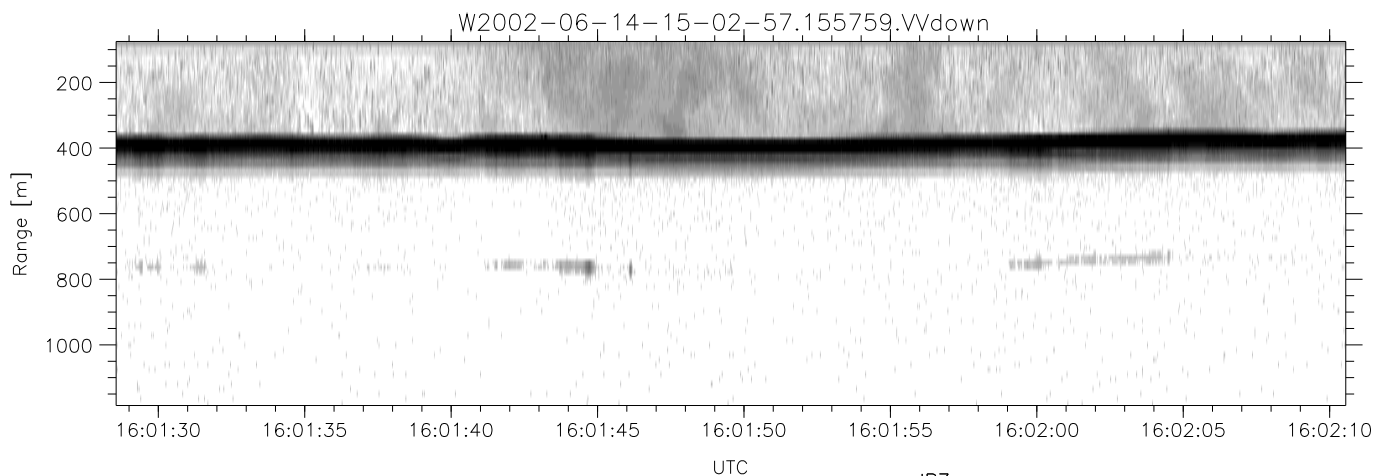
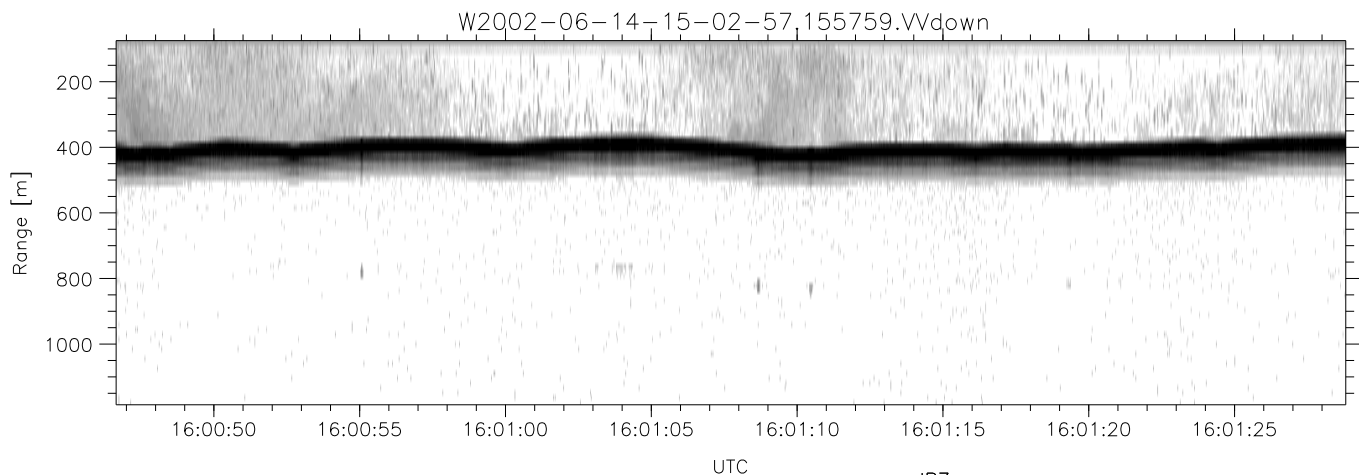
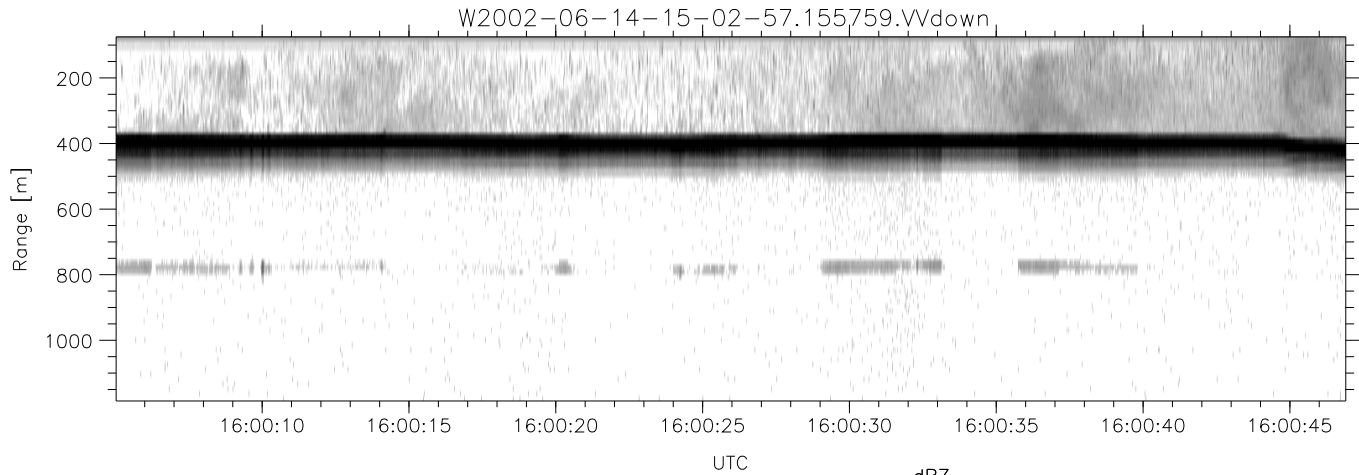


IHOP 2002 (dual-antenna config, modes 1,3,4,7) Data (cal: 49.0,50.0)

W2002-06-14-15-02-57 - PPMAG4
 IRIG:1,UTC: 15:02:52.11 to 17:39:16.80, Dur: 9384s
 TimeLngth: 9384.69s, TimeInt: 28ms (34.7pps)
 TimeCor=-13.0s, DSPDif(mn,min,mx):28,28,240
 PPS(min,max,std): 28,36,1.66
 Prof: 394 to 326207, NumProf(t/r): 325813/12802
 ProcTime/Recs: 15:57:59-16:04:06/115218-128019
 MxACQtime: 33ms; DRate: 146.9KB/s; Flags: 0, 0, 0
 Pulse: 275ns, IFfilt: 5.0MHz; ppPol: HH HV VV
 TxPol: HHVV, PRF: 20 10 20 10 kHz
 Range: Delay 75m, Spacing 15m, Gates 75
 Ave. Pulses: 84, Rng/Prof Aspect@90m/s: 5.8

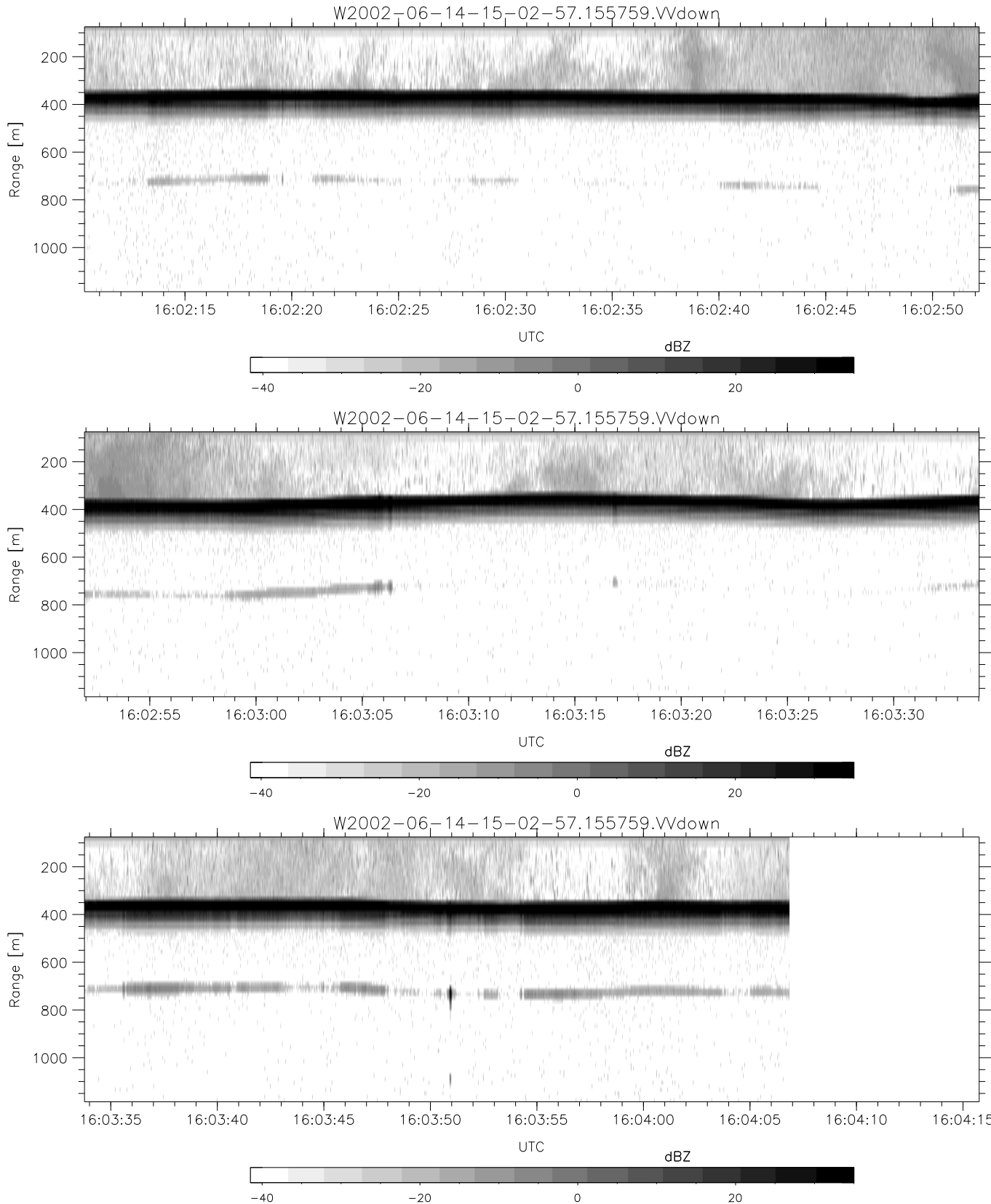
	Min	Max	Mean	Std	Varc%
hhN(dB)	-67.30	-63.90	-65.43	-75.49	9.9
vvN(dB)	-67.50	-64.06	-65.69	-75.72	9.9
hhL(dB)	-11.43	-5.29	-8.97	-17.52	14.0
vvL(dB)	-4.51	-0.43	-2.25	-11.67	11.4
ppN(m/s)	-12.43	12.12	-0.02	4.16	
ppT(m/s)	-98.18	95.74	-0.17	32.87	
hh/vv(dB)	-NaN	39.57	8.95	25.21	4221
vh/hh(dB)	-NaN	-30.08	-35.27	-35.87	87.2
hv/vv(dB)	-NaN	-31.36	-50.84	-46.50	271.
hnjmp(dB)	-2.76	2.56	-0.07	-8.60	14.0
vnjmp(dB)	-2.25	2.03	-0.07	-8.61	14.0



IHOP 2002 (dual-antenna config, modes 1,3,4,7) Data (cal: 49.0,50.0)

W2002-06-14-15-02-57 - PPMAG4
 IRIG:1,UTC: 15:02:52.11 to 17:39:16.80, Dur: 9384s
 TimeLngth: 9384.69s, TimeInt: 28ms (34.7pps)
 ProcTime/Recs: 15:57:59-16:04:06/115218-128019
 TimeCor=-13.0s, DSPDif(mn,min,mx):28,28,240
 PPS(min,max,std): 28,36,1.66
 Prof: 394 to 326207, NumProf(t/r): 325813/12802
 MxAcQtime: 33ms; DRate: 146.9KB/s; Flags: 0, 0, 0
 Pulse: 275ns, IFilt: 5.0MHz; ppPol: HH HV VV
 TxPol: HHVV, PRF: 20 10 20 10 kHz
 Range: Delay 75m, Spacing 15m, Gates 75
 Ave. Pulses: 84, Rng/Prof Aspect@90m/s: 5.8

	Min	Max	Mean	Std	Varc%
hhN(dB)	-67.30	-63.90	-65.43	-75.49	9.9
vvN(dB)	-67.50	-64.06	-65.69	-75.72	9.9
hhL(dB)	-11.43	-5.29	-8.97	-17.52	14.0
vvL(dB)	-4.51	-0.43	-2.25	-11.67	11.4
ppN(m/s)	-12.43	12.12	-0.02	4.16	
ppT(m/s)	-98.18	95.74	-0.17	32.87	
hh/vv(dB)	-NaN	39.57	8.95	25.21	4221
vh/hh(dB)	-NaN	-30.08	-35.27	-35.87	87.2
hv/vv(dB)	-NaN	-31.36	-50.84	-46.50	271.
hnjmp(dB)	-2.76	2.56	-0.07	-8.60	14.0
vnjmp(dB)	-2.25	2.03	-0.07	-8.61	14.0



IHOP 2002 (dual-antenna config, modes 1,3,4,7) Data (cal: 49.0,50.0)

W2002-06-14-15-02-57 - PPMAG4
 IRIG:1,UTC: 15:02:52.11 to 17:39:16.80, Dur: 9384s
 TimeLngth: 9384.69s, TimeInt: 28ms (34.7pps)
 TimeCor=-13.0s, DSPDif(mn,min,mx):28,28,240
 PPS(min,max,std): 28,36,1.66
 Prof: 394 to 326207, NumProf(t/r): 325813/12802
 ProcTime/Recs: 15:57:59-16:04:06/115218-128019
 MxACQtime: 33ms; DRate: 146.9KB/s; Flags: 0, 0, 0
 Pulse: 275ns, IFfilt: 5.0MHz; ppPol: HH HV VV
 TxPol: HHVV, PRF: 20 10 20 10 kHz
 Range: Delay 75m, Spacing 15m, Gates 75
 Ave. Pulses: 84, Rng/Prof Aspect@90m/s: 5.8

	Min	Max	Mean	Std	Varc%
hhN(dB)	-67.30	-63.90	-65.43	-75.49	9.9
vvN(dB)	-67.50	-64.06	-65.69	-75.72	9.9
hhL(dB)	-11.43	-5.29	-8.97	-17.52	14.0
vvL(dB)	-4.51	-0.43	-2.25	-11.67	11.4
ppN(m/s)	-12.43	12.12	-0.02	4.16	
ppT(m/s)	-98.18	95.74	-0.17	32.87	
hh/vv(dB)	-NaN	39.57	8.95	25.21	4221
vh/hh(dB)	-NaN	-30.08	-35.27	-35.87	87.2
hv/vv(dB)	-NaN	-31.36	-50.84	-46.50	271.
hnjmp(dB)	-2.76	2.56	-0.07	-8.60	14.0
vnjmp(dB)	-2.25	2.03	-0.07	-8.61	14.0