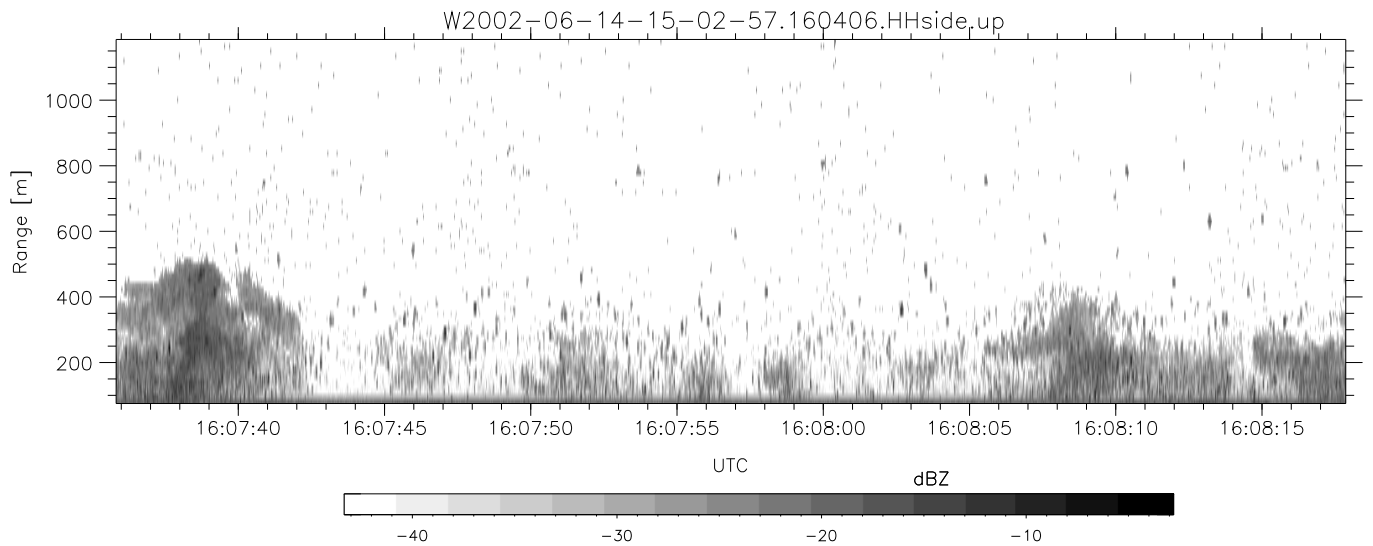
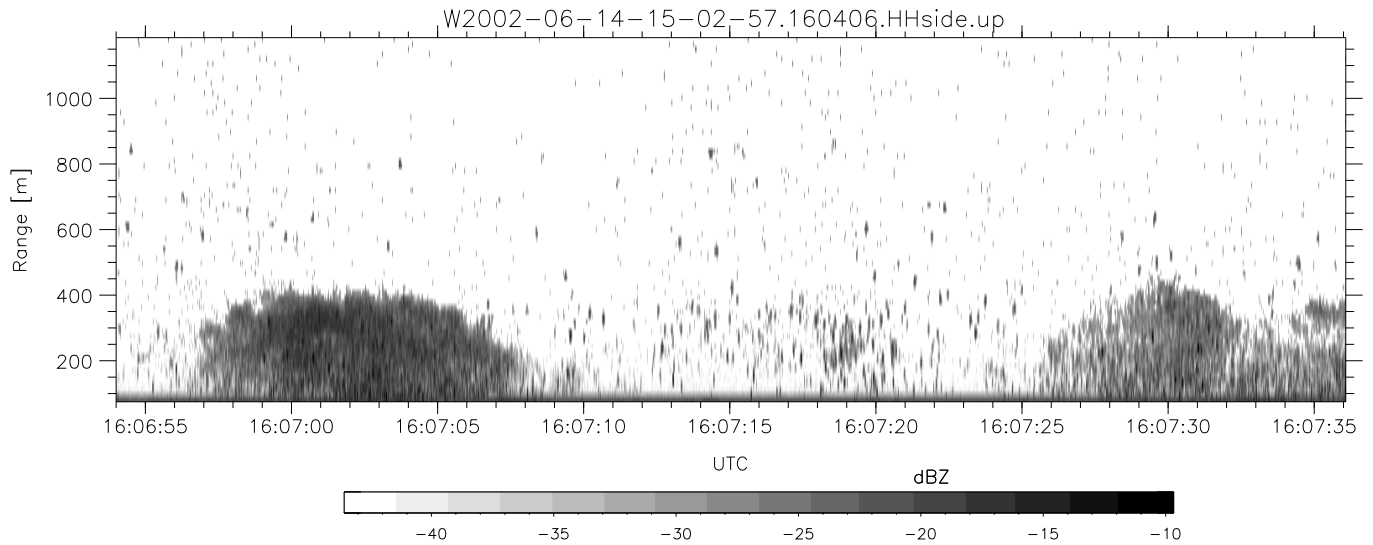
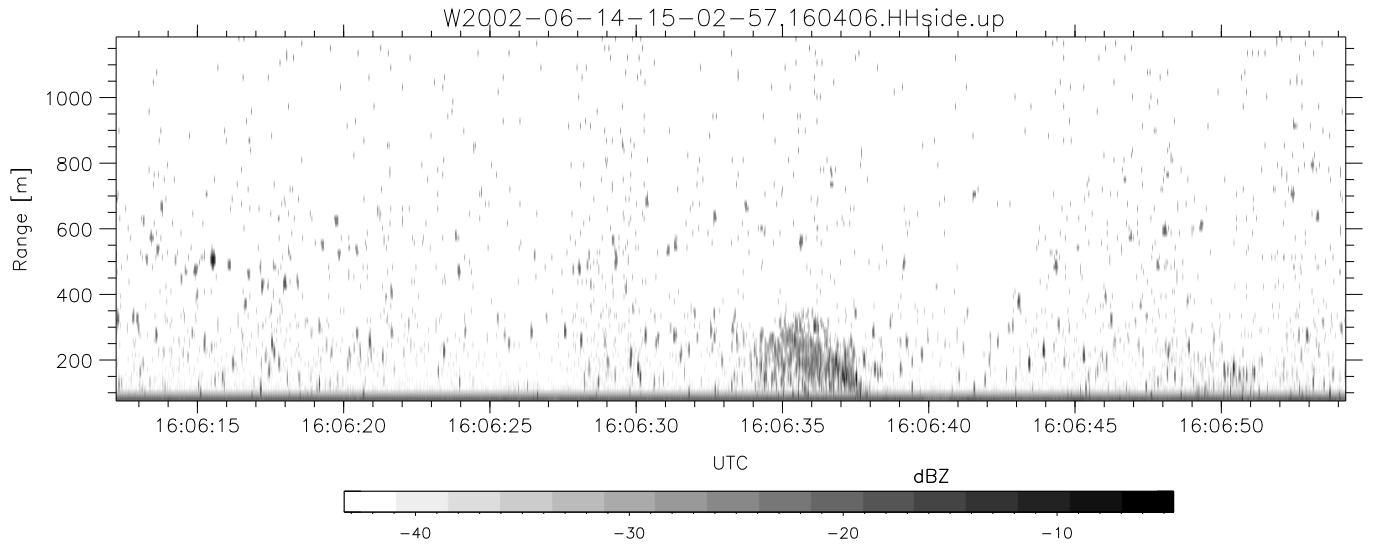


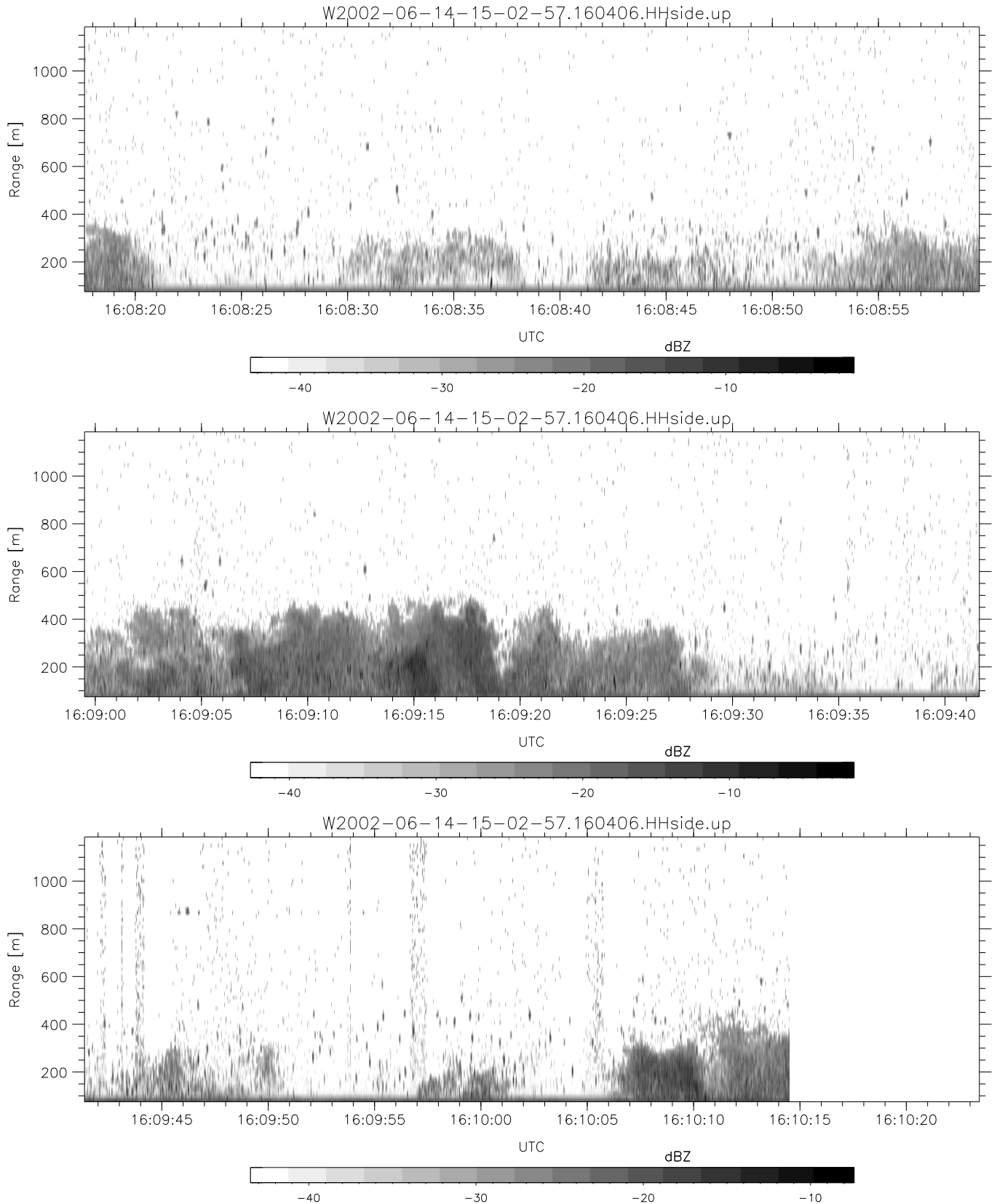
IHOP 2002 (dual-antenna config, modes 1,3,4,7) Data (cal: 49.0,50.0)

	Min	Max	Mean	Std	Varc%
W2002-06-14-15-02-57 - PPMAG4					
IRIG:1,UTC: 15:02:52.11 to 17:39:16.80, Dur: 9384s	hhN (dB)	-67.25 -63.61	-65.44	-75.42	10.1
TimeLngth: 9384.69s, TimeInt: 28ms (34.7pps)	vvN (dB)	-67.56 -63.15	-65.69	-75.37	10.8
TimeCor=-13.0s, DSPDif(mn,min,mx):28,28,235	hhL (dB)	-11.86 -5.34	-9.10	-17.78	13.6
PPS(min,max,std): 28,36,1.61	vvL (dB)	-4.77 -0.42	-2.48	-11.77	11.8
Prof: 394 to 326207, NumProf(t/r): 325813/12802	ppN (m/s)	-12.38 12.42	0.19	4.15	
ProcTime/Recs: 16:04:06-16:10:14/128020-140821	ppT (m/s)	-97.79 98.12	1.49	32.75	
MxACQtime: 33ms; DRate: 146.9KB/s; Flags: 0, 0, 0	hh/vv (dB)	-NaN 58.70	15.69	36.41	1180
Pulse: 275ns, IFilt: 5.0MHz; ppPol: HH HV VV	vh/hh (dB)	-NaN -30.95	-36.22	-36.12	102.
TxPol: HHVV, PRF: 20 10 20 10 kHz	hv/vv (dB)	-NaN -31.69	-50.35	-45.90	278.
Range: Delay 75m, Spacing 15m, Gates 75	hn/jmp (dB)	-2.31 2.21	-0.07	-8.72	13.6
Ave. Pulses: 84, Rng/Prof Aspect@90m/s: 5.8	vn/jmp (dB)	-2.64 2.06	-0.07	-8.72	13.7



IHOP 2002 (dual-antenna config, modes 1,3,4,7) Data (cal: 49.0,50.0)

W2002-06-14-15-02-57 - PPMAG4	Min	Max	Mean	Std	Varc%
IRIG:1,UTC: 15:02:52.11 to 17:39:16.80, Dur: 9384s	-67.25	-63.61	-65.44	-75.42	10.1
TimeLngth: 9384.69s, TimeInt: 28ms (34.7pps)	-67.56	-63.15	-65.69	-75.37	10.8
TimeCor=-13.0s, DSPDif(mn,min,mx):28,28,235	-11.86	-5.34	-9.10	-17.78	13.6
PPS(min,max,std): 28,36,1.61	-4.77	-0.42	-2.48	-11.77	11.8
Prof: 394 to 326207, NumProf(t/r): 325813/12802	ppN(m/s)	-12.38	12.42	0.19	4.15
ProcTime/Recs: 16:04:06-16:10:14/128020-140821	ppT(m/s)	-97.79	98.12	1.49	32.75
MxACQtime: 33ms; DRate: 146.9KB/s; Flags: 0, 0, 0	hh/vv(dB)	-NaN	58.70	15.69	36.41 1180
Pulse: 275ns, IFfilt: 5.0MHz; ppPol: HH HV VV	vh/hh(dB)	-NaN	-30.95	-36.22	-36.12 102.
TxPol: HHVV, PRF: 20 10 20 10 kHz	hv/vv(dB)	-NaN	-31.69	-50.35	-45.90 278.
Range: Delay 75m, Spacing 15m, Gates 75	hn/jmp(dB)	-2.31	2.21	-0.07	-8.72 13.6
Ave. Pulses: 84, Rng/Prof Aspect@90m/s: 5.8	vn/jmp(dB)	-2.64	2.06	-0.07	-8.72 13.7



IHOP 2002 (dual-antenna config, modes 1,3,4,7) Data (cal: 49.0,50.0)

W2002-06-14-15-02-57 - PPMAG4
 IRIG:1,UTC: 15:02:52.11 to 17:39:16.80, Dur: 9384s
 TimeLngth: 9384.69s, TimeInt: 28ms (34.7pps)
 TimeCor=-13.0s, DSPDif(mn,min,mx):28,28,235
 PPS(min,max,std): 28,36,1.61
 Prof: 394 to 326207, NumProf(t/r): 325813/12802
 ProcTime/Recs: 16:04:06-16:10:14/128020-140821
 MxACQtime: 33ms; DRate: 146.9KB/s; Flags: 0, 0, 0
 Pulse: 275ns, IFfilt: 5.0MHz; ppPol: HH HV VV
 TxPol: HHVV, PRF: 20 10 20 10 kHz
 Range: Delay 75m, Spacing 15m, Gates 75
 Ave. Pulses: 84, Rng/Prof Aspect@90m/s: 5.8

	Min	Max	Mean	Std	Varc%
hhN(dB)	-67.25	-63.61	-65.44	-75.42	10.1
vvN(dB)	-67.56	-63.15	-65.69	-75.37	10.8
hhL(dB)	-11.86	-5.34	-9.10	-17.78	13.6
vvL(dB)	-4.77	-0.42	-2.48	-11.77	11.8
ppN(m/s)	-12.38	12.42	0.19	4.15	
ppT(m/s)	-97.79	98.12	1.49	32.75	
hh/vv(dB)	-NaN	58.70	15.69	36.41	1180
vh/hh(dB)	-NaN	-30.95	-36.22	-36.12	102.
hv/vv(dB)	-NaN	-31.69	-50.35	-45.90	278.
hnjmp(dB)	-2.31	2.21	-0.07	-8.72	13.6
vnjmp(dB)	-2.64	2.06	-0.07	-8.72	13.7