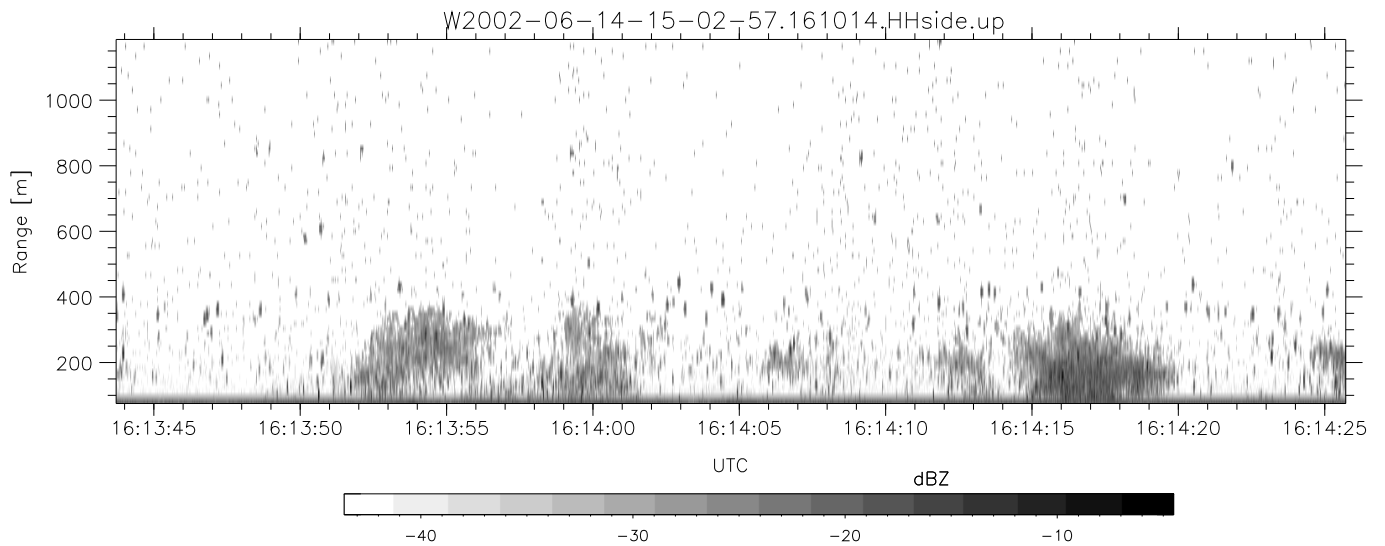
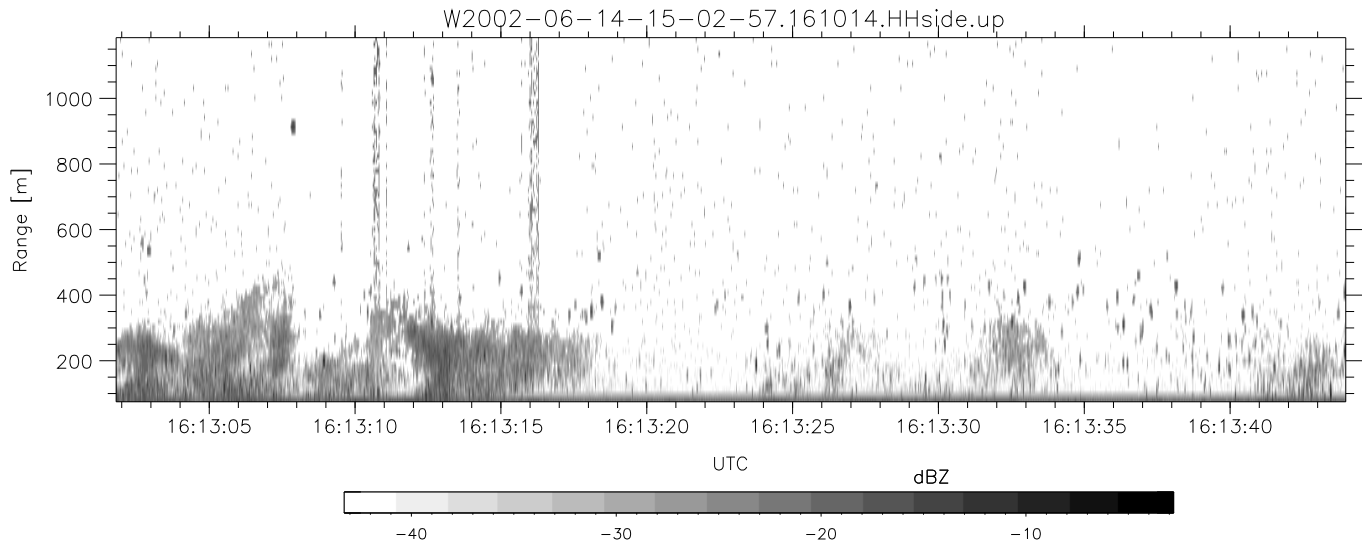
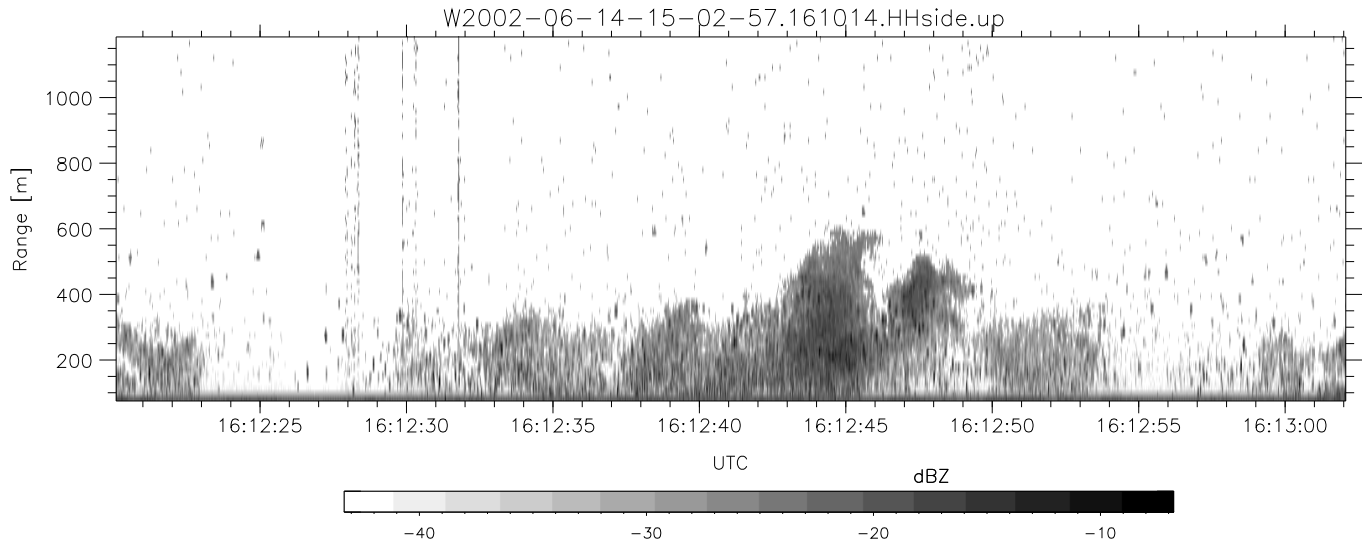


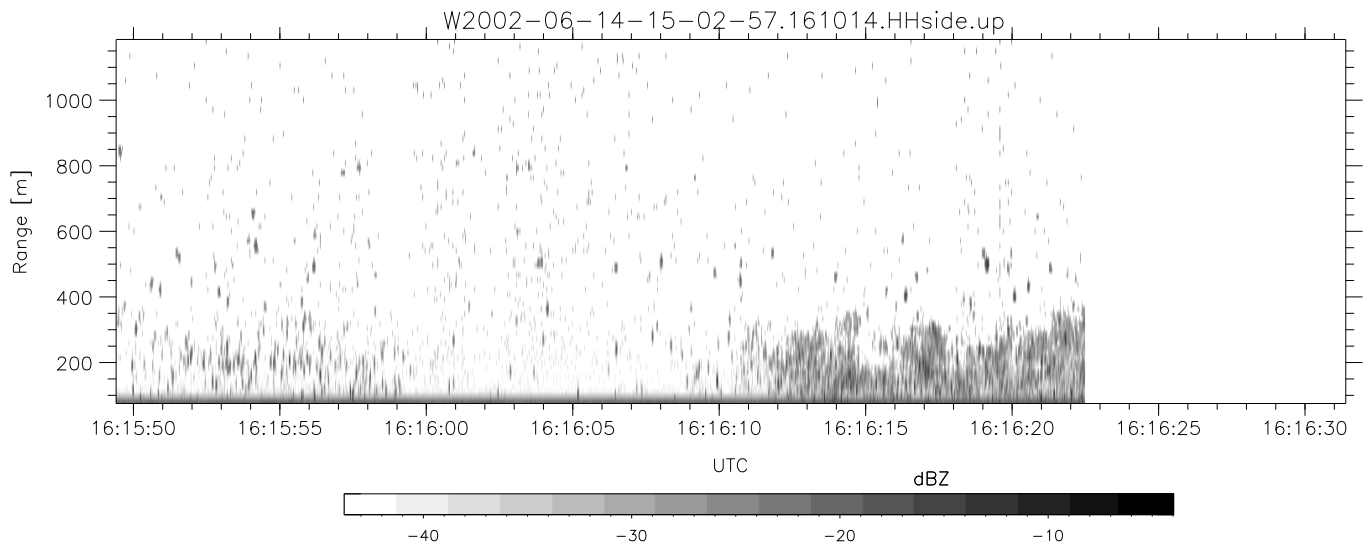
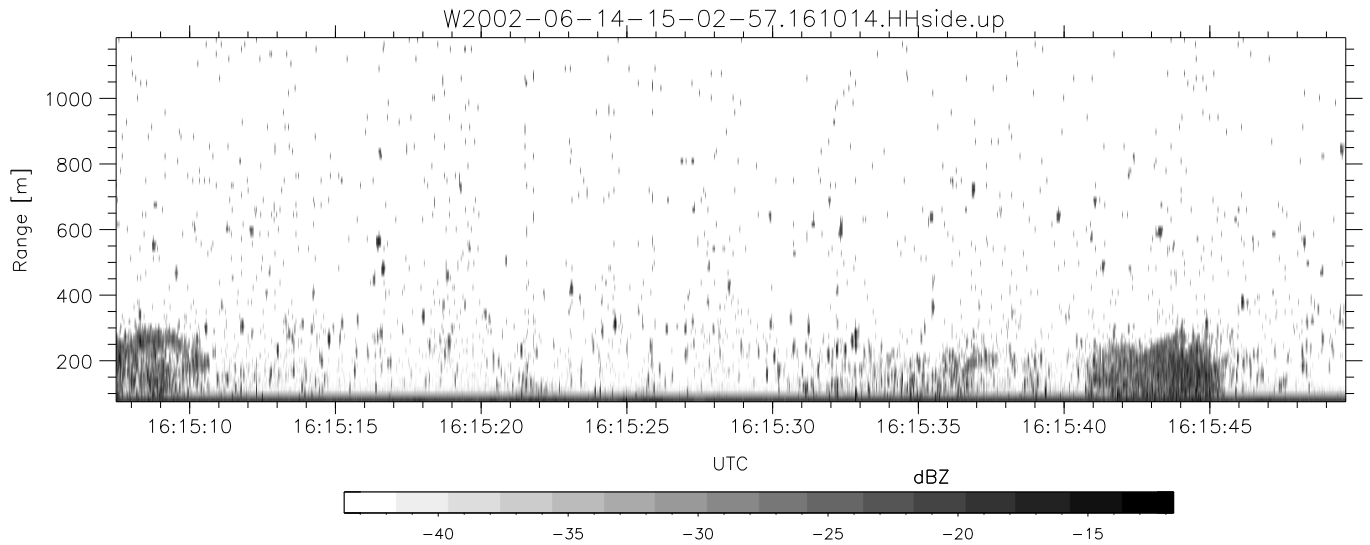
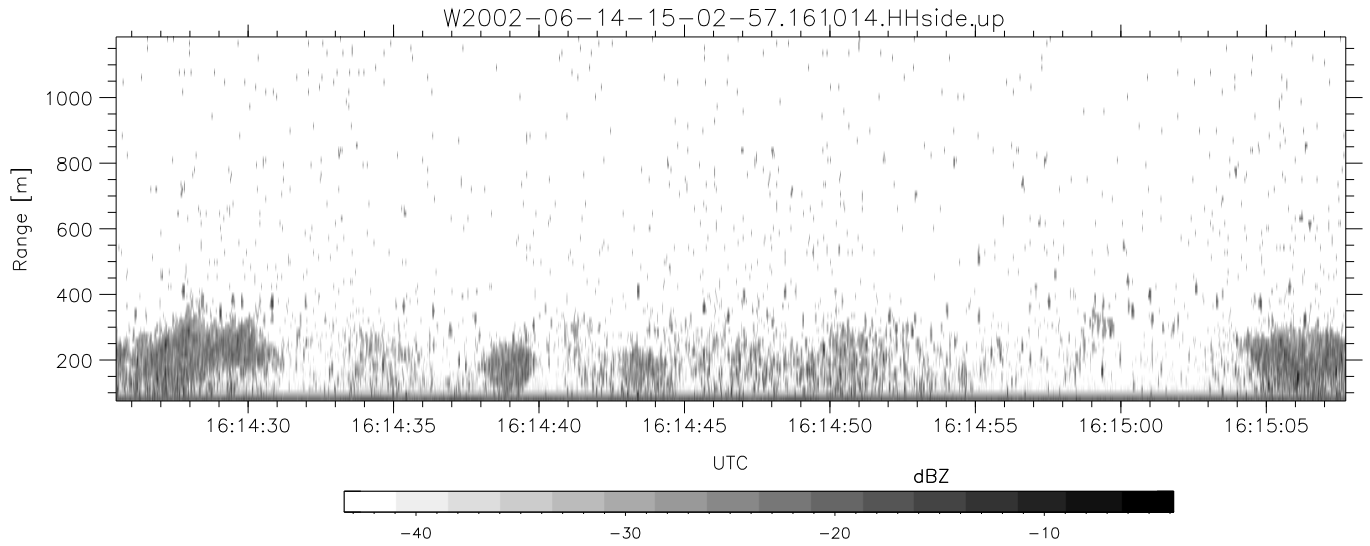
IHOP 2002 (dual-antenna config, modes 1,3,4,7) Data (cal: 49.0,50.0)

	Min	Max	Mean	Std	Varc%
W2002-06-14-15-02-57 - PPMAG4					
IRIG:1,UTC: 15:02:52.11 to 17:39:16.80, Dur: 9384s					
TimeLngth: 9384.69s, TimeInt: 28ms (34.7pps)					
TimeCor=-13.0s, DSPDif(mn,min,mx):28,28,247					
PPS(min,max,std): 28,36,1.63					
Prof: 394 to 326207, NumProf(t/r): 325813/12802					
ProcTime/Recs: 16:10:14-16:16:22/140822-153623					
MxACQtime: 33ms; DRate: 146.9KB/s; Flags: 0, 0, 0					
Pulse: 275ns, IFfilt: 5.0MHz; ppPol: HH HV VV					
TxPol: HHVV, PRF: 20 10 20 10 kHz					
Range: Delay 75m, Spacing 15m, Gates 75					
Ave. Pulses: 84, Rng/Prof Aspect@90m/s: 5.8					
hhN(dB)	-67.15	-61.98	-65.41	-74.74	11.7
vvN(dB)	-67.58	-62.60	-65.63	-74.63	12.6
hhL(dB)	-11.90	-2.99	-8.91	-14.49	27.7
vvL(dB)	-5.08	-0.77	-2.48	-11.00	14.1
ppN(m/s)	-12.38	12.15	0.30	4.17	
ppT(m/s)	-97.76	95.96	2.38	32.94	
hh/vv(dB)	-NaN	53.36	13.75	31.46	5909
vh/hh(dB)	-NaN	-29.18	-34.30	-35.19	81.6
hv/vv(dB)	-NaN	-30.58	-49.68	-45.38	269.1
hnjmp(dB)	-2.50	2.16	-0.08	-8.66	13.9
vnjmp(dB)	-2.39	2.12	-0.07	-8.56	14.2



IHOP 2002 (dual-antenna config, modes 1,3,4,7) Data (cal: 49.0,50.0)

W2002-06-14-15-02-57 - PPMAG4	Min	Max	Mean	Std	Varc%
IRIG:1,UTC: 15:02:52.11 to 17:39:16.80, Dur: 9384s	-67.15	-61.98	-65.41	-74.74	11.7
TimeLngth: 9384.69s, TimeInt: 28ms (34.7pps)	-67.58	-62.60	-65.63	-74.63	12.6
TimeCor=-13.0s, DSPDif(mn,min,mx):28,28,247	-11.90	-2.99	-8.91	-14.49	27.7
PPS(min,max,std): 28,36,1.63	-5.08	-0.77	-2.48	-11.00	14.1
Prof: 394 to 326207, NumProf(t/r): 325813/12802	ppN(m/s)	-12.38	12.15	0.30	4.17
ProcTime/Recs: 16:10:14-16:16:22/140822-153623	ppT(m/s)	-97.76	95.96	2.38	32.94
MxAcQtime: 33ms; DRate: 146.9KB/s; Flags: 0, 0, 0	hh/vv(dB)	-NaN	53.36	13.75	31.46 5909
Pulse: 275ns, IFilt: 5.0MHz; ppPol: HH HV VV	vh/hh(dB)	-NaN	-29.18	-34.30	-35.19 81.6
TxPol: HHVV, PRF: 20 10 20 10 kHz	hv/vv(dB)	-NaN	-30.58	-49.68	-45.38 269.
Range: Delay 75m, Spacing 15m, Gates 75	hn/jmp(dB)	-2.50	2.16	-0.08	-8.66 13.9
Ave. Pulses: 84, Rng/Prof Aspect@90m/s: 5.8	vn/jmp(dB)	-2.39	2.12	-0.07	-8.56 14.2



IHOP 2002 (dual-antenna config, modes 1,3,4,7) Data (cal: 49.0,50.0)

	Min	Max	Mean	Std	Varc%	
W2002-06-14-15-02-57 - PPMAG4						
IRIG:1,UTC: 15:02:52.11 to 17:39:16.80, Dur: 9384s	hhN (dB)	-67.15	-61.98	-65.41	-74.74	11.7
TimeLngth: 9384.69s, TimeInt: 28ms (34.7pps)	vvN (dB)	-67.58	-62.60	-65.63	-74.63	12.6
TimeCor=-13.0s, DSPDif(mn,min,mx):28,28,247	hhL (dB)	-11.90	-2.99	-8.91	-14.49	27.7
PPS(min,max,std): 28,36,1.63	vvL (dB)	-5.08	-0.77	-2.48	-11.00	14.1
Prof: 394 to 326207, NumProf(t/r): 325813/12802	ppN (m/s)	-12.38	12.15	0.30	4.17	
ProcTime/Recs: 16:10:14-16:16:22/140822-153623	ppT (m/s)	-97.76	95.96	2.38	32.94	
MxACQtime: 33ms; DRate: 146.9KB/s; Flags: 0, 0, 0	hh/vv (dB)	-NaN	53.36	13.75	31.46	5909
Pulse: 275ns, IFilt: 5.0MHz; ppPol: HH HV VV	vh/hh (dB)	-NaN	-29.18	-34.30	-35.19	81.6
TxPol: HHVV, PRF: 20 10 20 10 kHz	hv/vv (dB)	-NaN	-30.58	-49.68	-45.38	269.
Range: Delay 75m, Spacing 15m, Gates 75	hn_jmp (dB)	-2.50	2.16	-0.08	-8.66	13.9
Ave. Pulses: 84, Rng/Prof Aspect@90m/s: 5.8	vn_jmp (dB)	-2.39	2.12	-0.07	-8.56	14.2