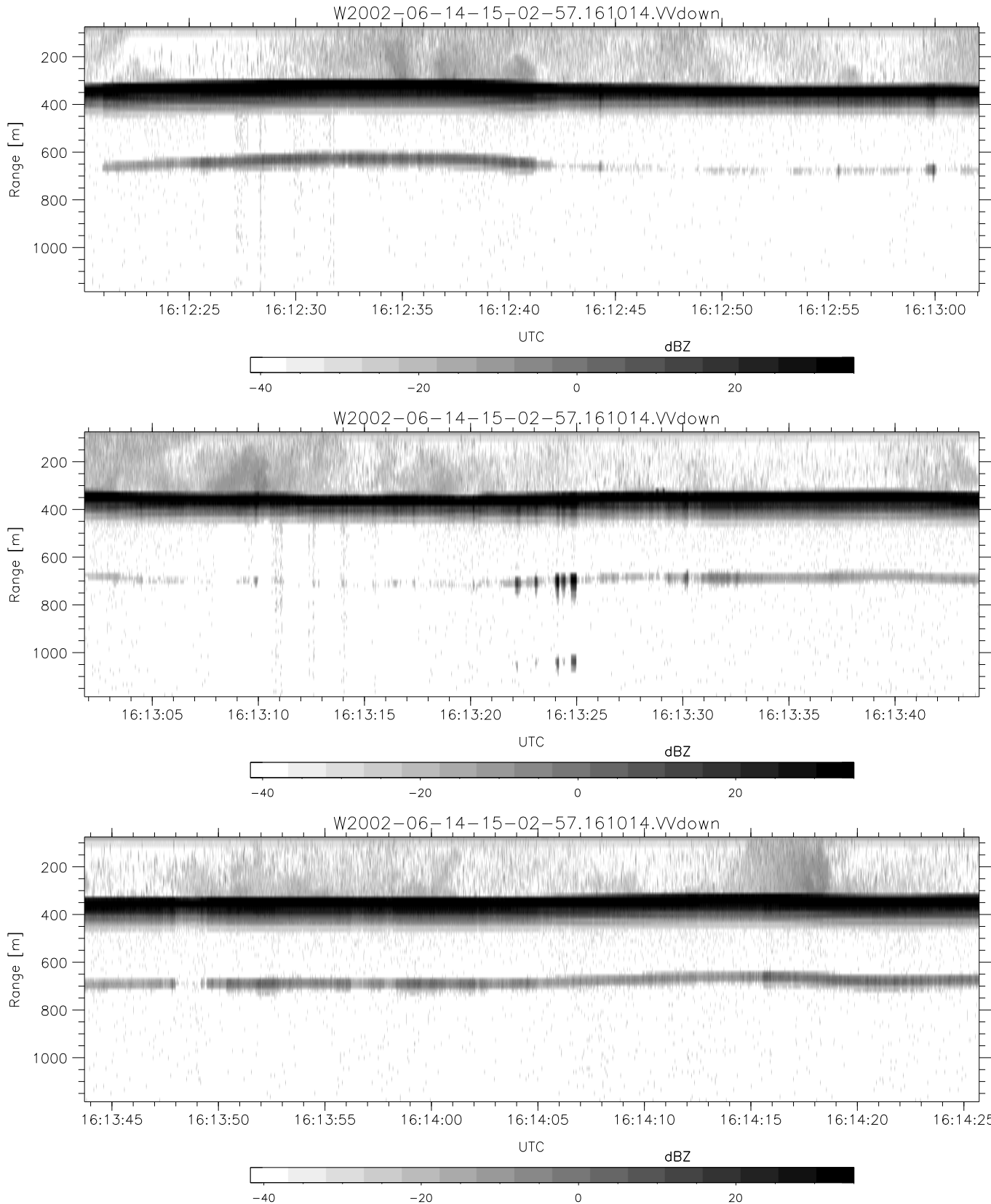


IHOP 2002 (dual-antenna config, modes 1,3,4,7) Data (cal: 49.0,50.0)

W2002-06-14-15-02-57 - PPMAG4  
 IRIG:1,UTC: 15:02:52.11 to 17:39:16.80, Dur: 9384s  
 TimeLngth: 9384.69s, TimeInt: 28ms (34.7pps)  
 TimeCor=-13.0s, DSPDif(mn,min,mx):28,28,247  
 PPS(min,max,std): 28,36,1.63  
 Prof: 394 to 326207, NumProf(t/r): 325813/12802  
 ProcTime/Recs: 16:10:14-16:16:22/140822-153623  
 MxAcQtime: 33ms; DRate: 146.9KB/s; Flags: 0, 0, 0  
 Pulse: 275ns, IFilt: 5.0MHz; ppPol: HH HV VV  
 TxPol: HHVV, PRF: 20 10 20 10 kHz  
 Range: Delay 75m, Spacing 15m, Gates 75  
 Ave. Pulses: 84, Rng/Prof Aspect@90m/s: 5.8

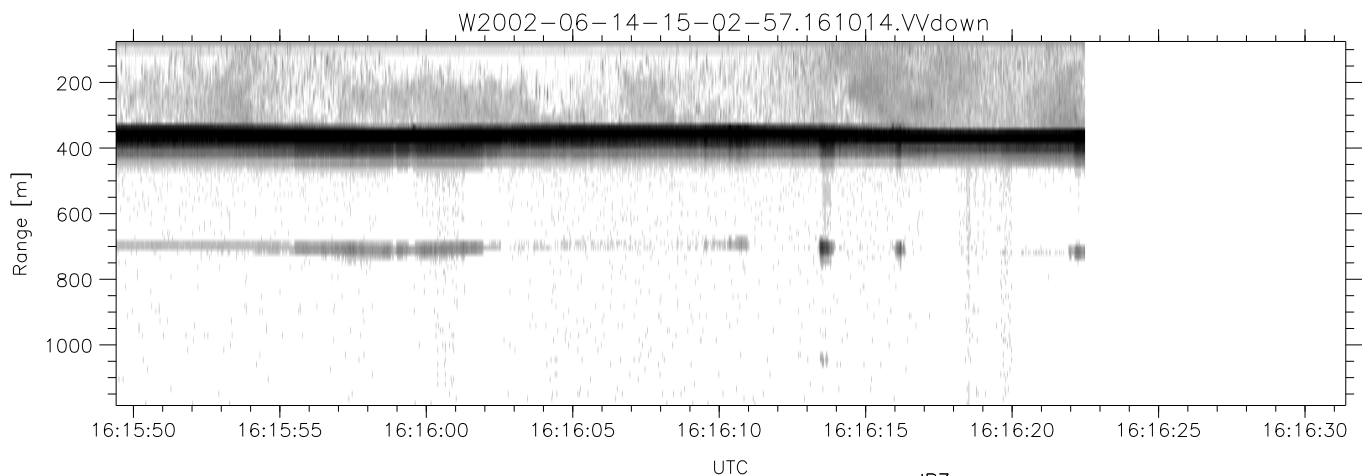
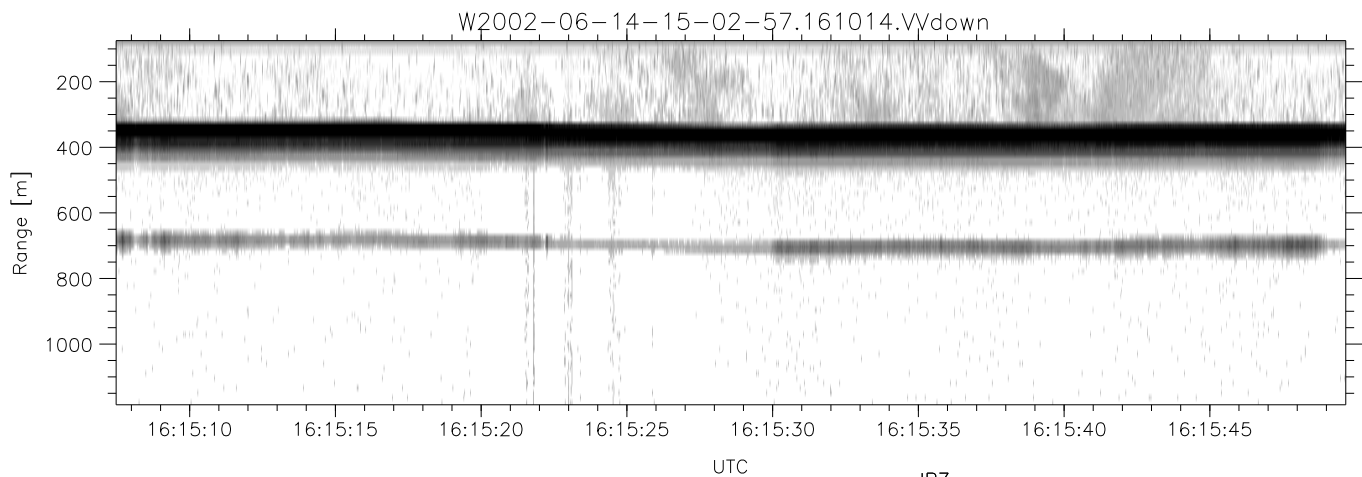
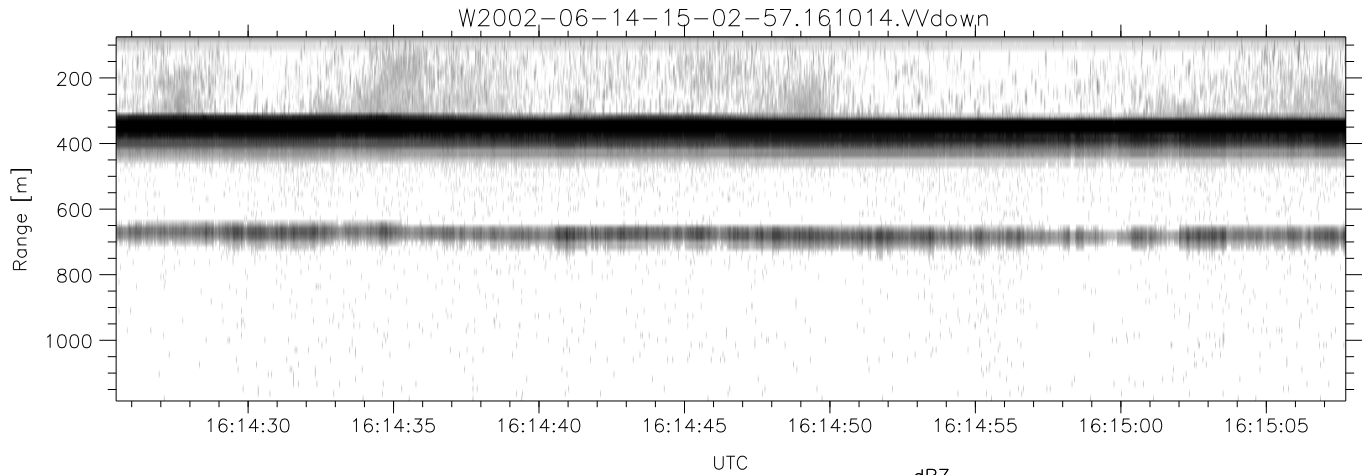
	Min	Max	Mean	Std	Varc%
hhN(dB)	-67.15	-61.98	-65.41	-74.74	11.7
vvN(dB)	-67.58	-62.60	-65.63	-74.63	12.6
hhL(dB)	-11.90	-2.99	-8.91	-14.49	27.7
vvL(dB)	-5.08	-0.77	-2.48	-11.00	14.1
ppN(m/s)	-12.38	12.15	0.30	4.17	
ppT(m/s)	-97.76	95.96	2.38	32.94	
hh/vv(dB)	-NaN	53.36	13.75	31.46	5909
vh/hh(dB)	-NaN	-29.18	-34.30	-35.19	81.6
hv/vv(dB)	-NaN	-30.58	-49.68	-45.38	269.
hnjmp(dB)	-2.50	2.16	-0.08	-8.66	13.9
vnjmp(dB)	-2.39	2.12	-0.07	-8.56	14.2



IHOP 2002 (dual-antenna config, modes 1,3,4,7) Data (cal: 49.0,50.0)

W2002-06-14-15-02-57 - PPMAG4  
 IRIG:1,UTC: 15:02:52.11 to 17:39:16.80, Dur: 9384s  
 TimeLngth: 9384.69s, TimeInt: 28ms (34.7pps)  
 TimeCor=-13.0s, DSPDif(mn,min,mx):28,28,247  
 PPS(min,max,std): 28,36,1.63  
 Prof: 394 to 326207, NumProf(t/r): 325813/12802  
 ProcTime/Recs: 16:10:14-16:16:22/140822-153623  
 MxACQtime: 33ms; DRate: 146.9KB/s; Flags: 0, 0, 0  
 Pulse: 275ns, IFfilt: 5.0MHz; ppPol: HH HV VV  
 TxPol: HHVV, PRF: 20 10 20 10 kHz  
 Range: Delay 75m, Spacing 15m, Gates 75  
 Ave. Pulses: 84, Rng/Prof Aspect@90m/s: 5.8

	Min	Max	Mean	Std	Varc%
hhN(dB)	-67.15	-61.98	-65.41	-74.74	11.7
vvN(dB)	-67.58	-62.60	-65.63	-74.63	12.6
hhL(dB)	-11.90	-2.99	-8.91	-14.49	27.7
vvL(dB)	-5.08	-0.77	-2.48	-11.00	14.1
ppN(m/s)	-12.38	12.15	0.30	4.17	
ppT(m/s)	-97.76	95.96	2.38	32.94	
hh/vv(dB)	-NaN	53.36	13.75	31.46	5909
vh/hh(dB)	-NaN	-29.18	-34.30	-35.19	81.6
hv/vv(dB)	-NaN	-30.58	-49.68	-45.38	269.
hnjmp(dB)	-2.50	2.16	-0.08	-8.66	13.9
vnjmp(dB)	-2.39	2.12	-0.07	-8.56	14.2



IHOP 2002 (dual-antenna config, modes 1,3,4,7) Data (cal: 49.0,50.0)

W2002-06-14-15-02-57 - PPMAG4  
 IRIG:1,UTC: 15:02:52.11 to 17:39:16.80, Dur: 9384s  
 TimeLngth: 9384.69s, TimeInt: 28ms (34.7pps)  
 TimeCor=-13.0s, DSPDif(mn,min,mx):28,28,247  
 PPS(min,max,std): 28,36,1.63  
 Prof: 394 to 326207, NumProf(t/r): 325813/12802  
 ProcTime/Recs: 16:10:14-16:16:22/140822-153623  
 MxACQtime: 33ms; DRate: 146.9KB/s; Flags: 0, 0, 0  
 Pulse: 275ns, IFfilt: 5.0MHz; ppPol: HH HV VV  
 TxPol: HHVV, PRF: 20 10 20 10 kHz  
 Range: Delay 75m, Spacing 15m, Gates 75  
 Ave. Pulses: 84, Rng/Prof Aspect@90m/s: 5.8

	Min	Max	Mean	Std	Varc%
hhN(dB)	-67.15	-61.98	-65.41	-74.74	11.7
vvN(dB)	-67.58	-62.60	-65.63	-74.63	12.6
hhL(dB)	-11.90	-2.99	-8.91	-14.49	27.7
vvL(dB)	-5.08	-0.77	-2.48	-11.00	14.1
ppN(m/s)	-12.38	12.15	0.30	4.17	
ppT(m/s)	-97.76	95.96	2.38	32.94	
hh/vv(dB)	-NaN	53.36	13.75	31.46	5909
vh/hh(dB)	-NaN	-29.18	-34.30	-35.19	81.6
hv/vv(dB)	-NaN	-30.58	-49.68	-45.38	269.
hnjmp(dB)	-2.50	2.16	-0.08	-8.66	13.9
vnjmp(dB)	-2.39	2.12	-0.07	-8.56	14.2