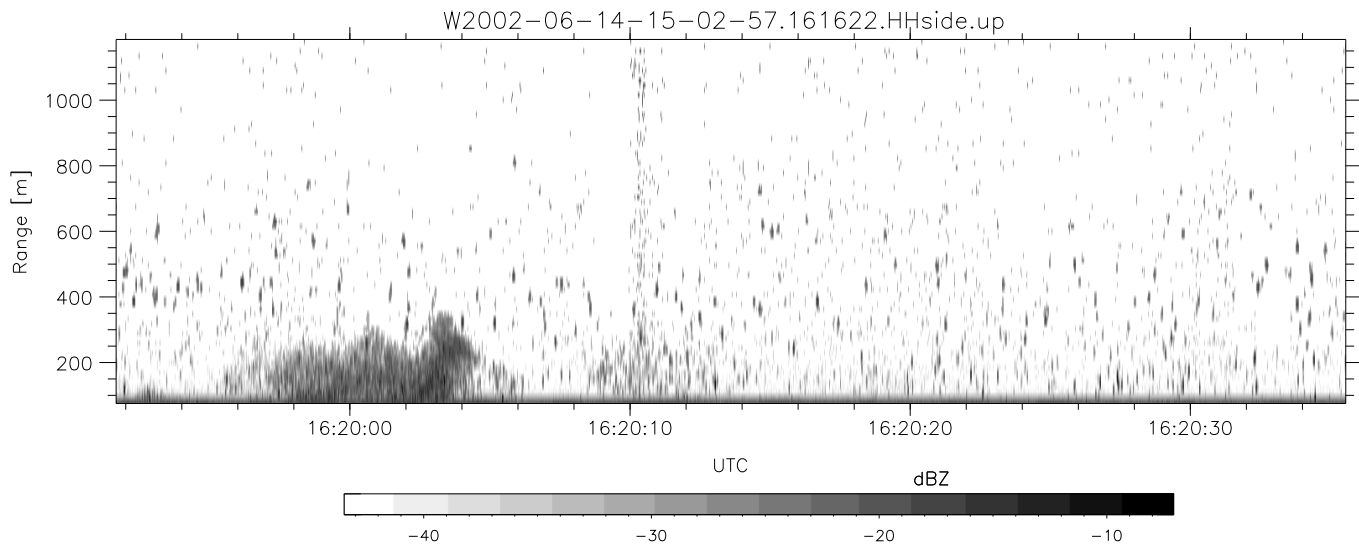
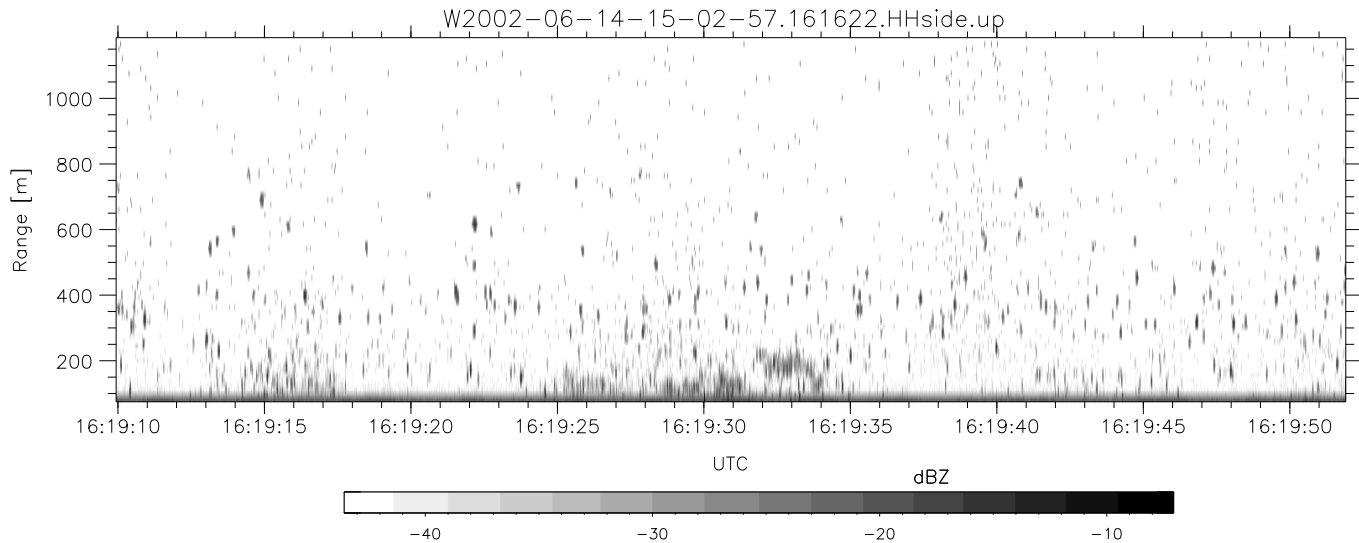
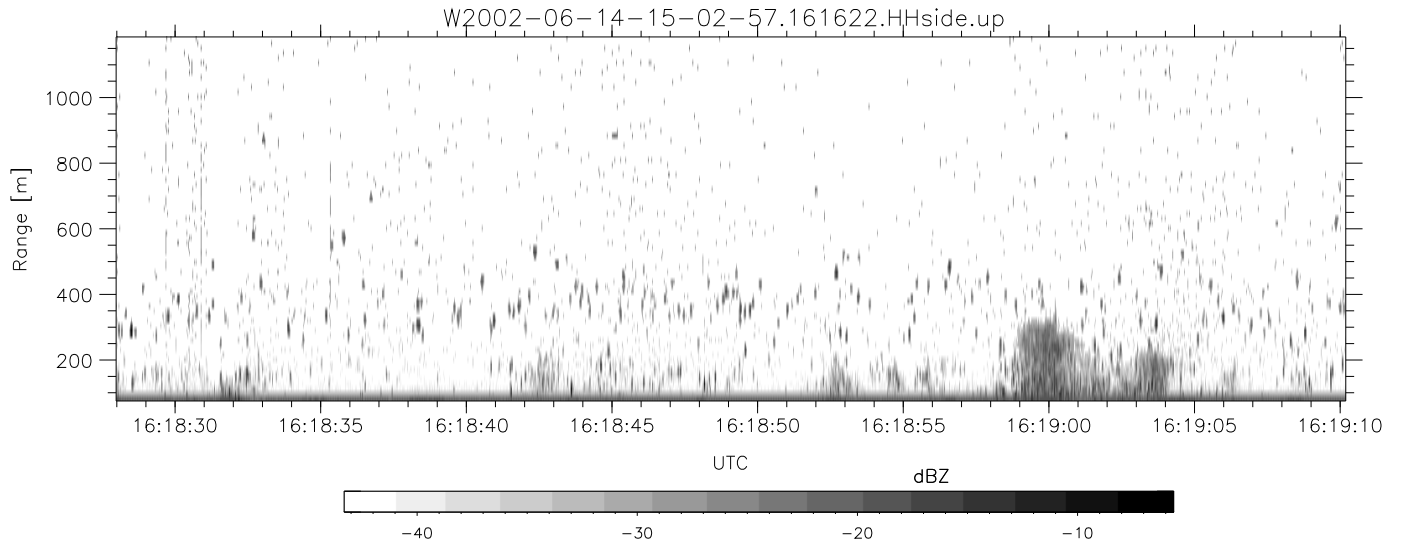


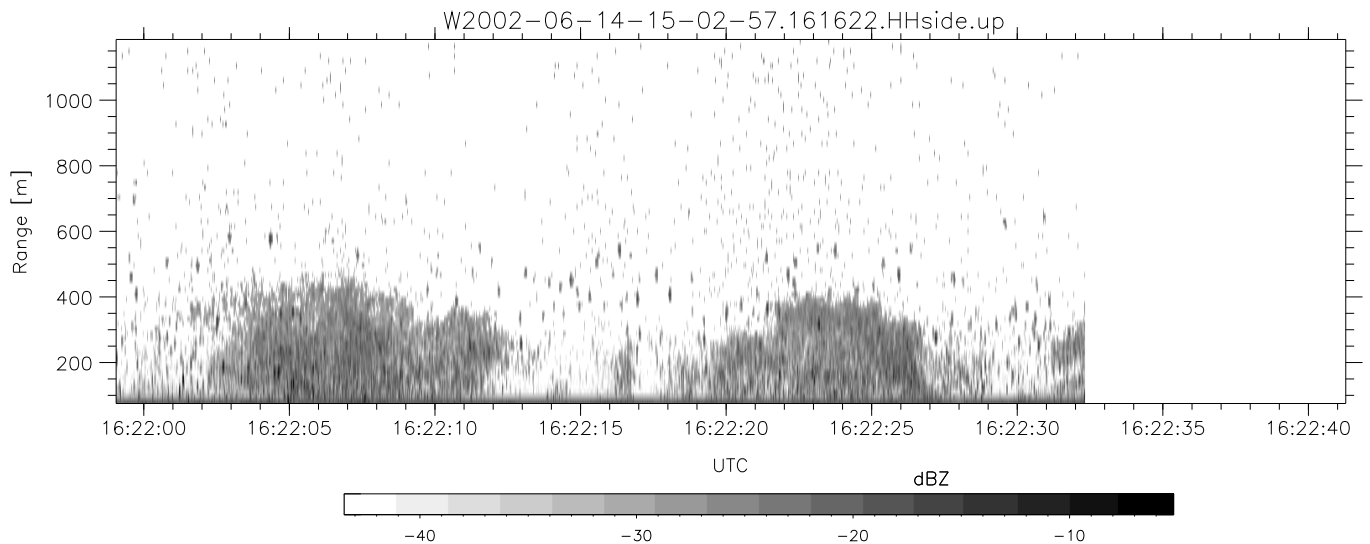
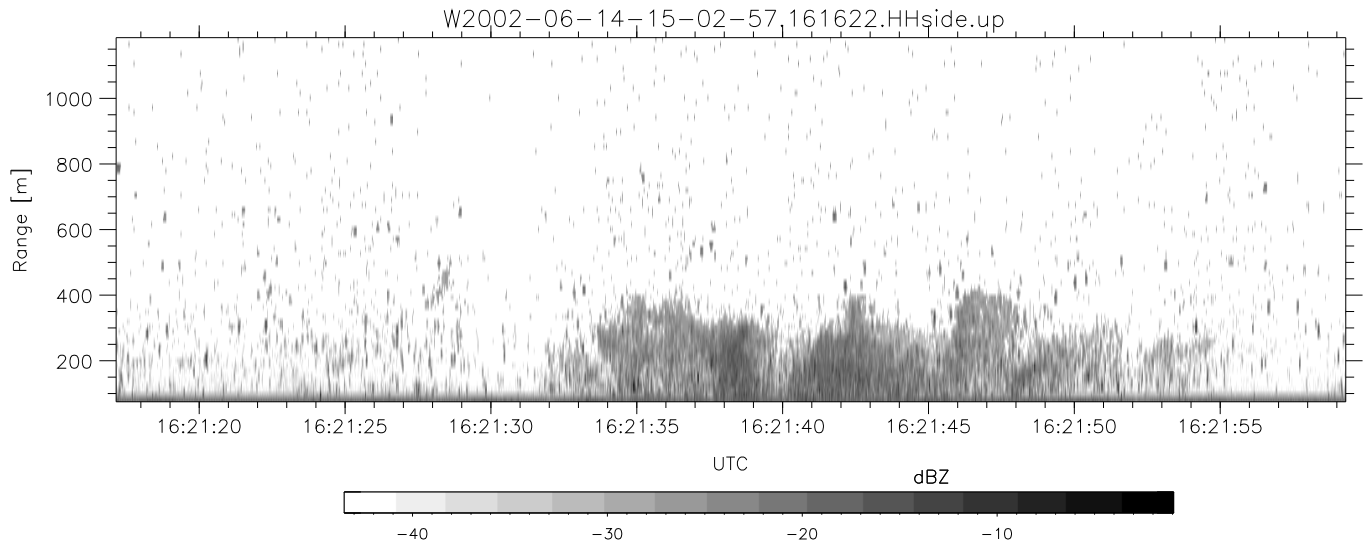
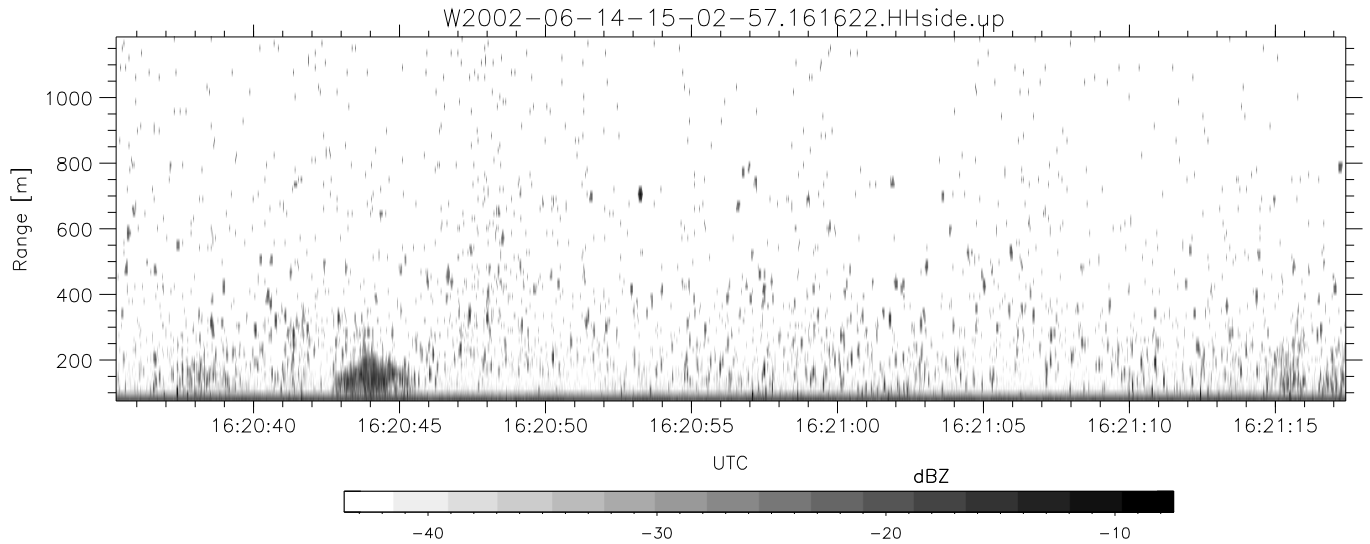
IHOP 2002 (dual-antenna config, modes 1,3,4,7) Data (cal: 49.0,50.0)

W2002-06-14-15-02-57 - PPMAG4					
IRIG:1,UTC: 15:02:52.11 to 17:39:16.80, Dur: 9384s	hhN (dB)	Min	Max	Mean	Std
TimeLngth: 9384.69s, TimeInt: 28ms (34.7pps)	vvN (dB)	-67.30	-63.82	-65.48	-75.34
TimeCor=-13.0s, DSPDif(mn,min,mx):28,28,322	hhL (dB)	-67.56	-63.51	-65.73	-75.14
PPS(min,max,std): 15,36,2.32	vvL (dB)	-11.87	-5.97	-9.15	-18.21
Prof: 394 to 326207, NumProf(t/r): 325813/12802	ppN (m/s)	-4.68	-0.84	-2.46	-12.08
ProcTime/Recs: 16:16:22-16:22:32/153624-166425	ppT (m/s)	-12.52	12.21	0.18	4.16
MxACQtime: 33ms; DRate: 146.9KB/s; Flags: 0, 0, 0	hh/vv (dB)	-98.94	96.47	1.45	32.88
Pulse: 275ns, IFfilt: 5.0MHz; ppPol: HH HV VV	vh/vh (dB)	-NaN	43.55	11.58	26.95
TxPol: HHVV, PRF: 20 10 20 10 kHz	hv/vv (dB)	-NaN	-29.62	-35.59	-35.92
Range: Delay 75m, Spacing 15m, Gates 75	hn/vv (dB)	-NaN	-29.84	-49.57	-45.44
Ave. Pulses: 84, Rng/Prof Aspect@90m/s: 5.8	hn/jmp (dB)	-2.17	2.05	-0.09	-8.69
	vn/jmp (dB)	-2.68	2.24	-0.08	-8.60
					10.3
					11.5
					12.4
					10.9
					3438
					92.9
					258.
					13.8
					14.0



IHOP 2002 (dual-antenna config, modes 1,3,4,7) Data (cal: 49.0,50.0)

W2002-06-14-15-02-57 - PPMAG4	Min	Max	Mean	Std	Varc%	
IRIG:1,UTC: 15:02:52.11 to 17:39:16.80, Dur: 9384s	-67.30	-63.82	-65.48	-75.34	10.3	
TimeLngth: 9384.69s, TimeInt: 28ms (34.7pps)	vvN (dB)	-67.56	-63.51	-65.73	-75.14	11.5
TimeCor=-13.0s, DSPDif(mn,min,mx):28,28,322	hhL (dB)	-11.87	-5.97	-9.15	-18.21	12.4
PPS(min,max,std): 15,36,2.32	vvL (dB)	-4.68	-0.84	-2.46	-12.08	10.9
Prof: 394 to 326207, NumProf(t/r): 325813/12802	ppN(m/s)	-12.52	12.21	0.18	4.16	
ProcTime/Recs: 16:16:22-16:22:32/153624-166425	ppT(m/s)	-98.94	96.47	1.45	32.88	
MxACQtime: 33ms; DRate: 146.9KB/s; Flags: 0, 0, 0	hh/vv (dB)	-NaN	43.55	11.58	26.95	3438
Pulse: 275ns, IFfilt: 5.0MHz; ppPol: HH HV VV	vh/hh (dB)	-NaN	-29.62	-35.59	-35.92	92.9
TxPol: HHVV, PRF: 20 10 20 10 kHz	hv/vv (dB)	-NaN	-29.84	-49.57	-45.44	258.
Range: Delay 75m, Spacing 15m, Gates 75	hn/jmp (dB)	-2.17	2.05	-0.09	-8.69	13.8
Ave. Pulses: 84, Rng/Prof Aspect@90m/s: 5.8	vn/jmp (dB)	-2.68	2.24	-0.08	-8.60	14.0



IHOP 2002 (dual-antenna config, modes 1,3,4,7) Data (cal: 49.0,50.0)

W2002-06-14-15-02-57 - PPMAG4	Min	Max	Mean	Std	Varc%	
IRIG:1,UTC: 15:02:52.11 to 17:39:16.80, Dur: 9384s	hhN(dB)	-67.30	-63.82	-65.48	-75.34	10.3
TimeLngth: 9384.69s, TimeInt: 28ms (34.7pps)	vvN(dB)	-67.56	-63.51	-65.73	-75.14	11.5
TimeCor=-13.0s, DSPDif(mn,min,mx):28,28,322	hhL(dB)	-11.87	-5.97	-9.15	-18.21	12.4
PPS(min,max,std): 15,36,2.32	vvL(dB)	-4.68	-0.84	-2.46	-12.08	10.9
Prof: 394 to 326207, NumProf(t/r): 325813/12802	ppN(m/s)	-12.52	12.21	0.18	4.16	
ProcTime/Recs: 16:16:22-16:22:32/153624-166425	ppT(m/s)	-98.94	96.47	1.45	32.88	
MxACQtime: 33ms; DRate: 146.9KB/s; Flags: 0, 0, 0	hh/vv(dB)	-NaN	43.55	11.58	26.95	3438
Pulse: 275ns, IFfilt: 5.0MHz; ppPol: HH HV VV	vh/hh(dB)	-NaN	-29.62	-35.59	-35.92	92.9
TxPol: HHVV, PRF: 20 10 20 10 kHz	hv/vv(dB)	-NaN	-29.84	-49.57	-45.44	258.
Range: Delay 75m, Spacing 15m, Gates 75	hn_jmp(dB)	-2.17	2.05	-0.09	-8.69	13.8
Ave. Pulses: 84, Rng/Prof Aspect@90m/s: 5.8	vn_jmp(dB)	-2.68	2.24	-0.08	-8.60	14.0