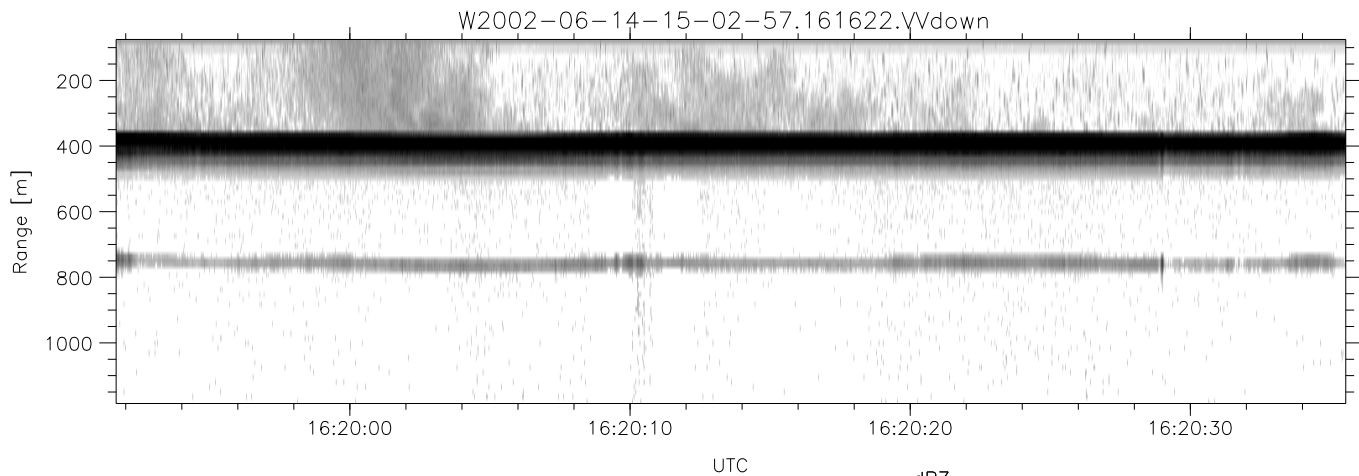
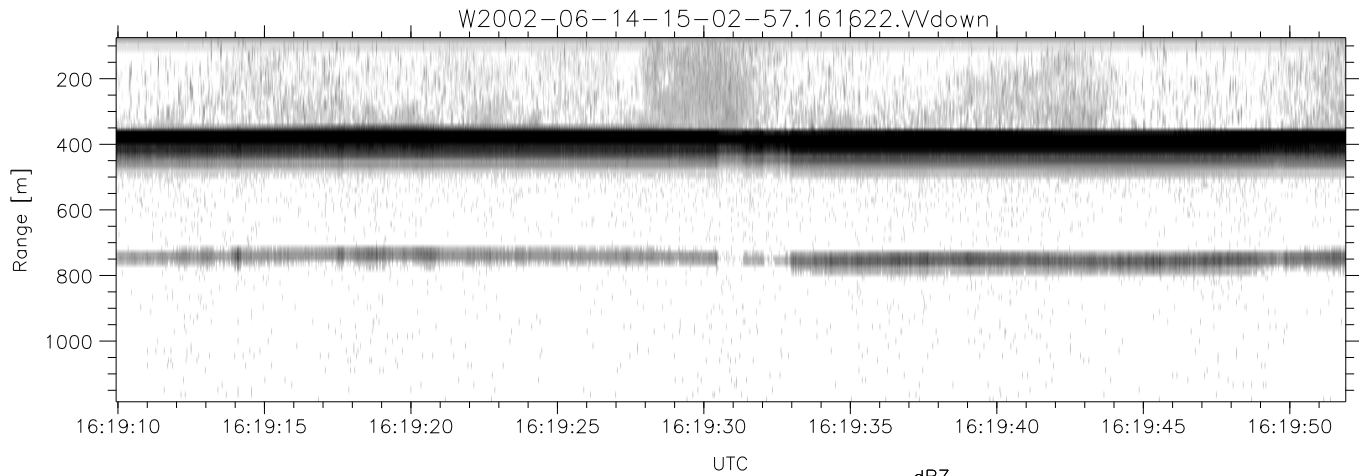
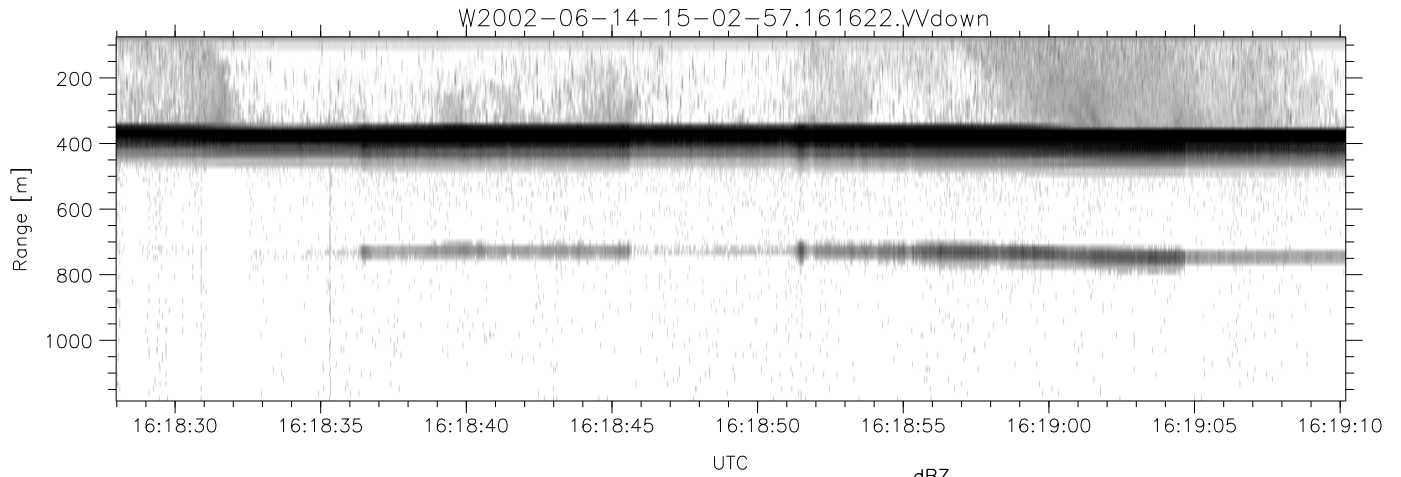


IHOP 2002 (dual-antenna config, modes 1,3,4,7) Data (cal: 49.0,50.0)

W2002-06-14-15-02-57 - PPMAG4
 IRIG:1,UTC: 15:02:52.11 to 17:39:16.80, Dur: 9384s
 TimeLngth: 9384.69s, TimeInt: 28ms (34.7pps)
 TimeCor=-13.0s, DSPDif(mn,min,mx):28,28,322
 PPS(min,max,std): 15,36,2.32
 Prof: 394 to 326207, NumProf(t/r): 325813/12802
 ProcTime/Recs: 16:16:22-16:22:32/153624-166425
 MxACQtime: 33ms; DRate: 146.9KB/s; Flags: 0, 0, 0
 Pulse: 275ns, IFfilt: 5.0MHz; ppPol: HH HV VV
 TxPol: HHVV, PRF: 20 10 20 10 kHz
 Range: Delay 75m, Spacing 15m, Gates 75
 Ave. Pulses: 84, Rng/Prof Aspect@90m/s: 5.8

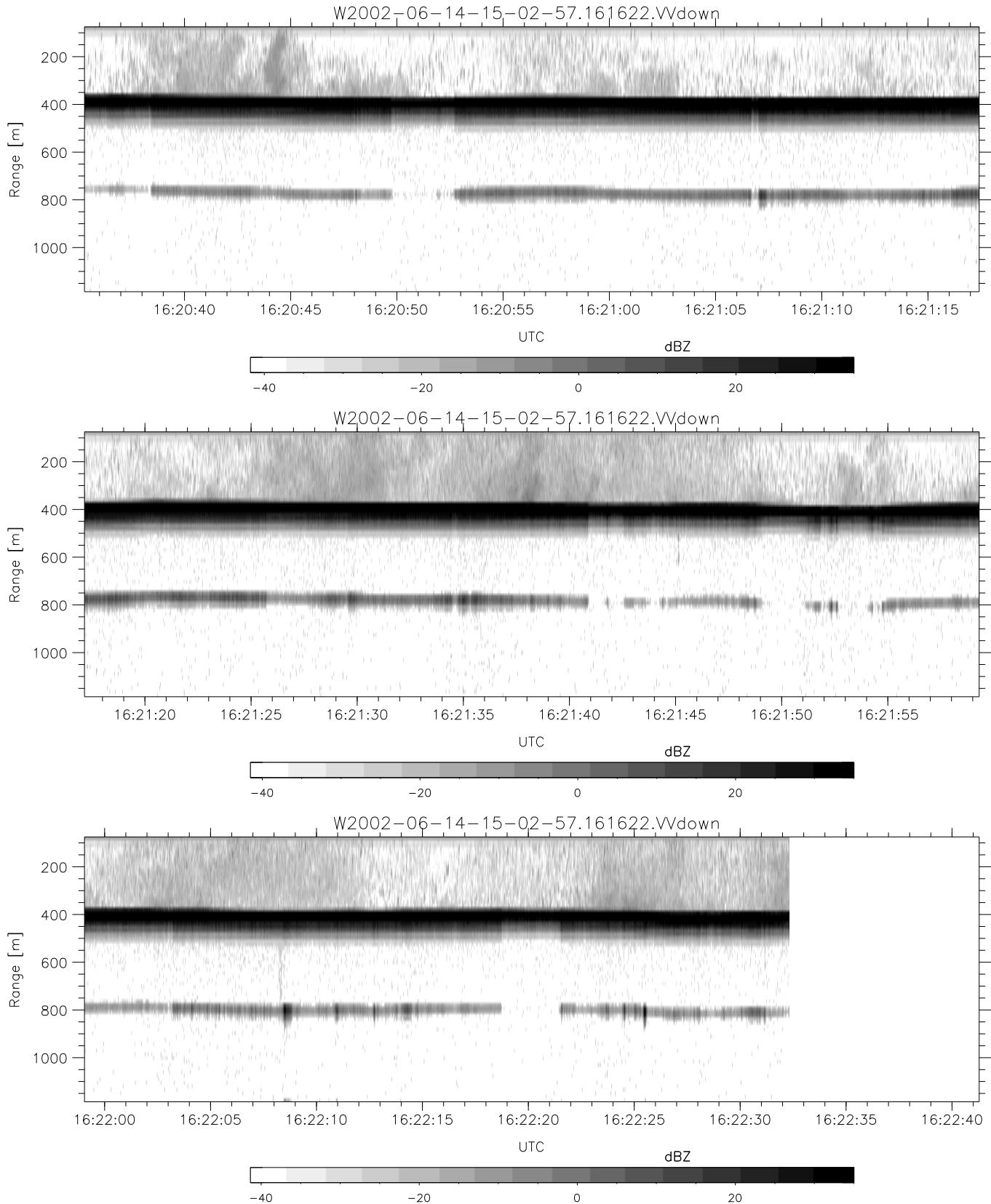
	Min	Max	Mean	Std	Varc%
hhN(dB)	-67.30	-63.82	-65.48	-75.34	10.3
vvN(dB)	-67.56	-63.51	-65.73	-75.14	11.5
hhL(dB)	-11.87	-5.97	-9.15	-18.21	12.4
vvL(dB)	-4.68	-0.84	-2.46	-12.08	10.9
ppN(m/s)	-12.52	12.21	0.18	4.16	
ppT(m/s)	-98.94	96.47	1.45	32.88	
hh/vv(dB)	-NaN	43.55	11.58	26.95	3438
vh/hh(dB)	-NaN	-29.62	-35.59	-35.92	92.9
hv/vv(dB)	-NaN	-29.84	-49.57	-45.44	258.
hnjmp(dB)	-2.17	2.05	-0.09	-8.69	13.8
vnjmp(dB)	-2.68	2.24	-0.08	-8.60	14.0



IHOP 2002 (dual-antenna config, modes 1,3,4,7) Data (cal: 49.0,50.0)

W2002-06-14-15-02-57 - PPMAG4
 IRIG:1,UTC: 15:02:52.11 to 17:39:16.80, Dur: 9384s
 TimeLngth: 9384.69s, TimeInt: 28ms (34.7pps)
 TimeCor=-13.0s, DSPDif(mn,min,mx):28,28,322
 PPS(min,max,std): 15,36,2.32
 Prof: 394 to 326207, NumProf(t/r): 325813/12802
 ProcTime/Recs: 16:16:22-16:22:32/153624-166425
 MxACQtime: 33ms; DRate: 146.9KB/s; Flags: 0, 0, 0
 Pulse: 275ns, IFfilt: 5.0MHz; ppPol: HH HV VV
 TxPol: HHVV, PRF: 20 10 20 10 kHz
 Range: Delay 75m, Spacing 15m, Gates 75
 Ave. Pulses: 84, Rng/Prof Aspect@90m/s: 5.8

	Min	Max	Mean	Std	Varc%
hhN(dB)	-67.30	-63.82	-65.48	-75.34	10.3
vvN(dB)	-67.56	-63.51	-65.73	-75.14	11.5
hhL(dB)	-11.87	-5.97	-9.15	-18.21	12.4
vvL(dB)	-4.68	-0.84	-2.46	-12.08	10.9
ppN(m/s)	-12.52	12.21	0.18	4.16	
ppT(m/s)	-98.94	96.47	1.45	32.88	
hh/vv(dB)	-NaN	43.55	11.58	26.95	3438
vh/hh(dB)	-NaN	-29.62	-35.59	-35.92	92.9
hv/vv(dB)	-NaN	-29.84	-49.57	-45.44	258.
hnjmp(dB)	-2.17	2.05	-0.09	-8.69	13.8
vnjmp(dB)	-2.68	2.24	-0.08	-8.60	14.0



IHOP 2002 (dual-antenna config, modes 1,3,4,7) Data (cal: 49.0,50.0)

W2002-06-14-15-02-57 - PPMAG4
 IRIG:1,UTC: 15:02:52.11 to 17:39:16.80, Dur: 9384s
 TimeLngth: 9384.69s, TimeInt: 28ms (34.7pps)
 TimeCor=-13.0s, DSPDif(mn,min,mx):28,28,322
 PPS(min,max,std): 15,36,2.32
 Prof: 394 to 326207, NumProf(t/r): 325813/12802
 ProcTime/Recs: 16:16:22-16:22:32/153624-166425
 MxACQtime: 33ms; DRate: 146.9KB/s; Flags: 0, 0, 0
 Pulse: 275ns, IFilt: 5.0MHz; ppPol: HH HV VV
 TxPol: HHVV, PRF: 20 10 20 10 kHz
 Range: Delay 75m, Spacing 15m, Gates 75
 Ave. Pulses: 84, Rng/Prof Aspect@90m/s: 5.8

	Min	Max	Mean	Std	Varc%
hhN(dB)	-67.30	-63.82	-65.48	-75.34	10.3
vvN(dB)	-67.56	-63.51	-65.73	-75.14	11.5
hhL(dB)	-11.87	-5.97	-9.15	-18.21	12.4
vvL(dB)	-4.68	-0.84	-2.46	-12.08	10.9
ppN(m/s)	-12.52	12.21	0.18	4.16	
ppT(m/s)	-98.94	96.47	1.45	32.88	
hh/vv(dB)	-NaN	43.55	11.58	26.95	3438
vh/hh(dB)	-NaN	-29.62	-35.59	-35.92	92.9
hv/vv(dB)	-NaN	-29.84	-49.57	-45.44	258.
hnjmp(dB)	-2.17	2.05	-0.09	-8.69	13.8
vnjmp(dB)	-2.68	2.24	-0.08	-8.60	14.0