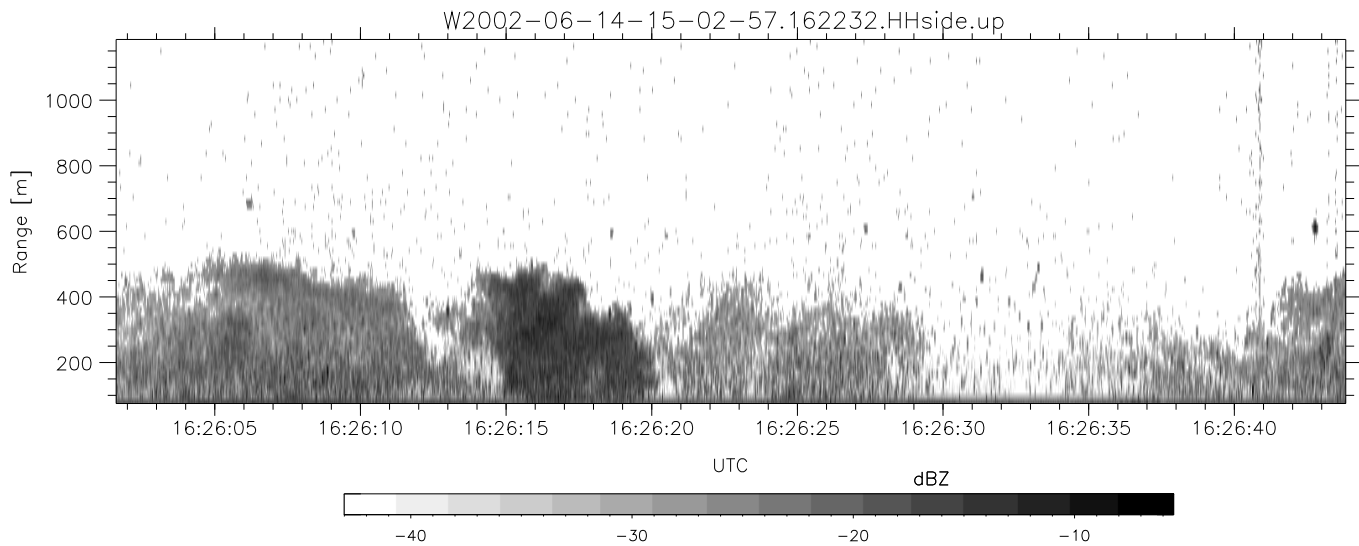
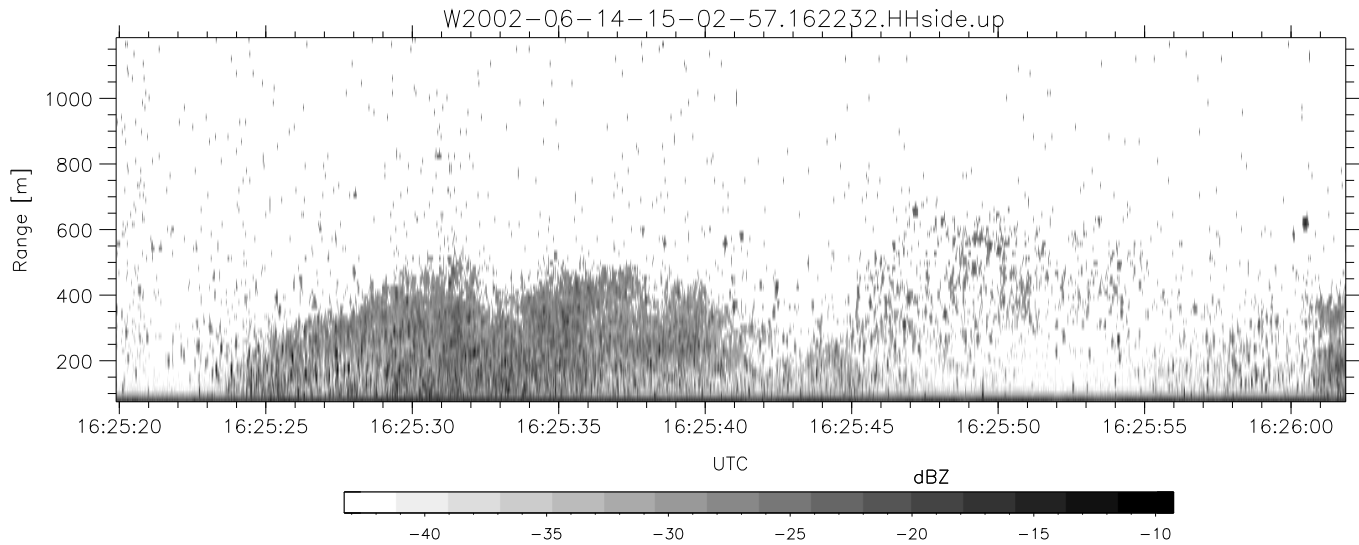
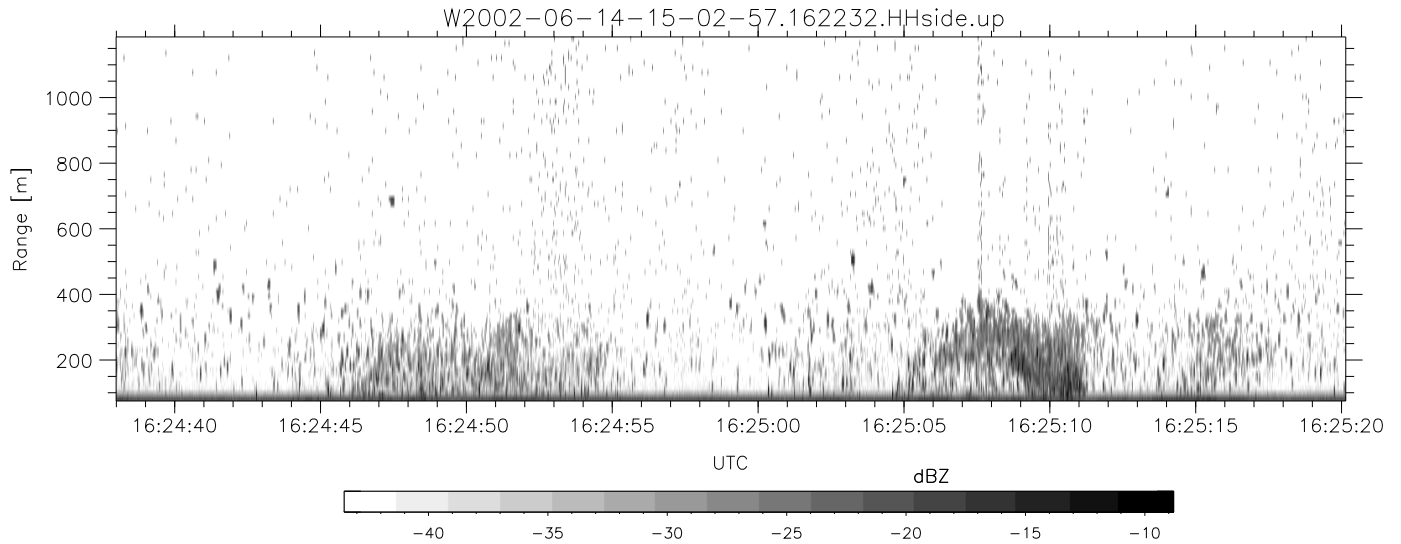


IHOP 2002 (dual-antenna config, modes 1,3,4,7) Data (cal: 49.0,50.0)

W2002-06-14-15-02-57 - PPMAG4
 IRIG:1,UTC: 15:02:52.11 to 17:39:16.80, Dur: 9384s
 TimeLngth: 9384.69s, TimeInt: 28ms (34.7pps)
 TimeCor=-13.0s, DSPDif(mn,min,mx):28,28,279
 PPS(min,max,std): 26,36,1.71
 Prof: 394 to 326207, NumProf(t/r): 325813/12802
 ProcTime/Recs: 16:22:32-16:28:40/166426-179227
 MxACQtime: 33ms; DRate: 146.9KB/s; Flags: 0, 0, 0
 Pulse: 275ns, IFfilt: 5.0MHz; ppPol: HH HV VV
 TxPol: HHVV, PRF: 20 10 20 10 kHz
 Range: Delay 75m, Spacing 15m, Gates 75
 Ave. Pulses: 84, Rng/Prof Aspect@90m/s: 5.8

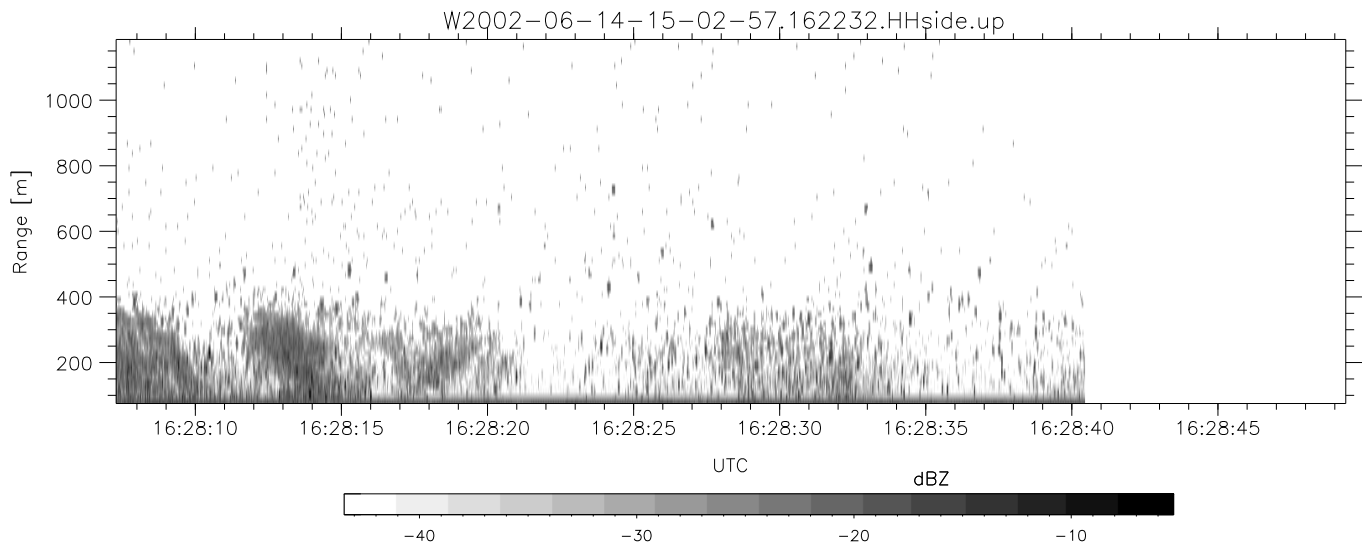
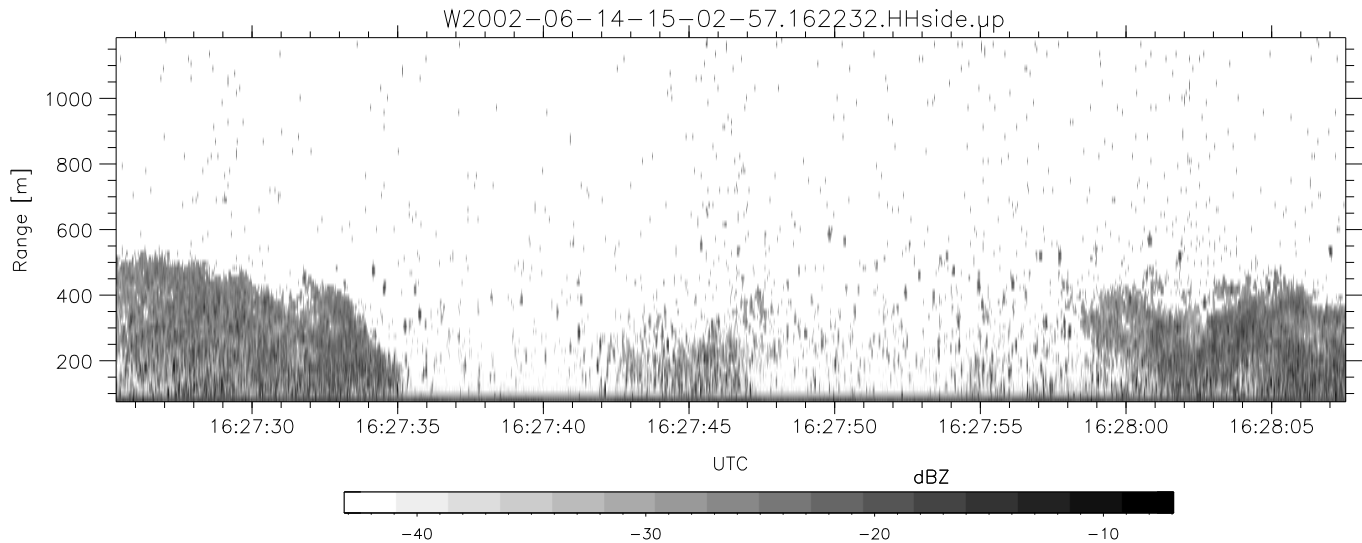
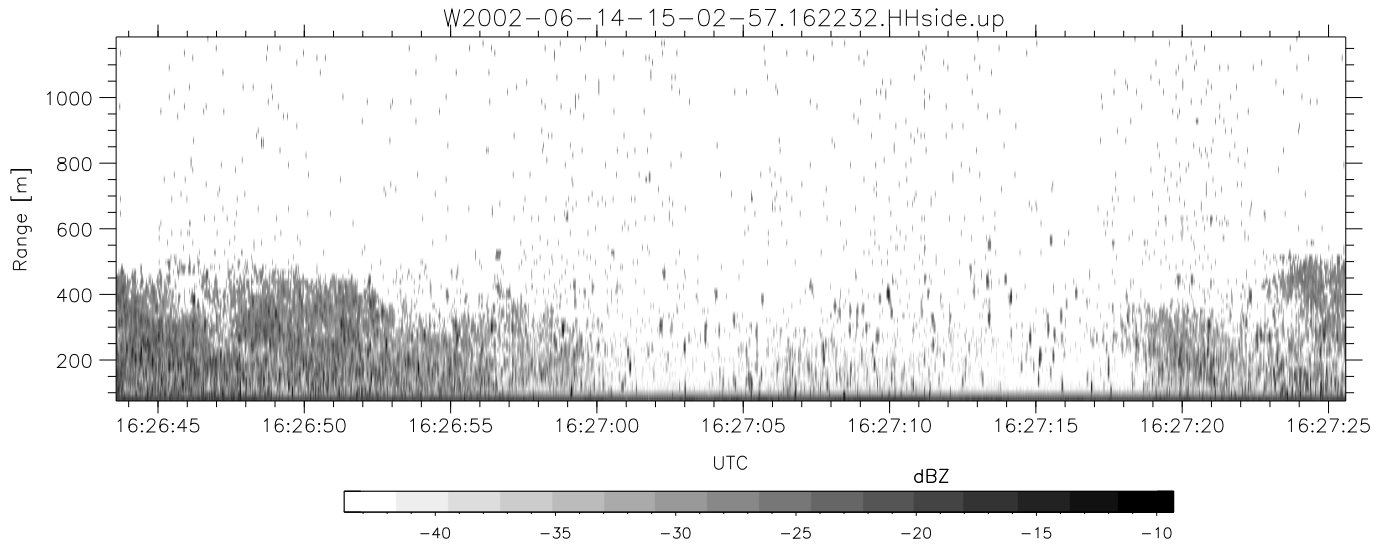
	Min	Max	Mean	Std	Varc%
hhN(dB)	-67.43	-63.67	-65.53	-75.51	10.0
vvN(dB)	-67.32	-63.16	-65.73	-75.48	10.6
hhL(dB)	-11.26	-4.77	-9.04	-17.48	14.3
vvL(dB)	-4.78	-0.74	-2.45	-11.34	12.9
ppN(m/s)	-12.46	12.48	0.08	4.19	
ppT(m/s)	-98.46	98.59	0.63	33.09	
hh/vv(dB)	-NaN	48.63	11.90	27.09	3305
vh/hh(dB)	-NaN	-26.52	-32.64	-33.29	86.1
hv/vv(dB)	-NaN	-31.01	-51.01	-45.87	327.
hnjmp(dB)	-2.32	1.98	-0.07	-8.66	13.8
vnjmp(dB)	-2.37	2.38	-0.08	-8.62	14.0



IHOP 2002 (dual-antenna config, modes 1,3,4,7) Data (cal: 49.0,50.0)

W2002-06-14-15-02-57 - PPMAG4
 IRIG:1,UTC: 15:02:52.11 to 17:39:16.80, Dur: 9384s
 TimeLngth: 9384.69s, TimeInt: 28ms (34.7pps)
 TimeCor=-13.0s, DSPDif(mn,min,mx):28,28,279
 PPS(min,max,std): 26,36,1.71
 Prof: 394 to 326207, NumProf(t/r): 325813/12802
 ProcTime/Recs: 16:22:32-16:28:40/166426-179227
 MxACQtime: 33ms; DRate: 146.9KB/s; Flags: 0, 0, 0
 Pulse: 275ns, IFilt: 5.0MHz; ppPol: HH HV VV
 TxPol: HHVV, PRF: 20 10 20 10 kHz
 Range: Delay 75m, Spacing 15m, Gates 75
 Ave. Pulses: 84, Rng/Prof Aspect@90m/s: 5.8

	Min	Max	Mean	Std	Varc%
hhN(dB)	-67.43	-63.67	-65.53	-75.51	10.0
vvN(dB)	-67.32	-63.16	-65.73	-75.48	10.6
hhL(dB)	-11.26	-4.77	-9.04	-17.48	14.3
vvL(dB)	-4.78	-0.74	-2.45	-11.34	12.9
ppN(m/s)	-12.46	12.48	0.08	4.19	
ppT(m/s)	-98.46	98.59	0.63	33.09	
hh/vv(dB)	-NaN	48.63	11.90	27.09	3305
vh/hh(dB)	-NaN	-26.52	-32.64	-33.29	86.1
hv/vv(dB)	-NaN	-31.01	-51.01	-45.87	327.
hnjmp(dB)	-2.32	1.98	-0.07	-8.66	13.8
vnjmp(dB)	-2.37	2.38	-0.08	-8.62	14.0



IHOP 2002 (dual-antenna config, modes 1,3,4,7) Data (cal: 49.0,50.0)

W2002-06-14-15-02-57 - PPMAG4
 IRIG:1,UTC: 15:02:52.11 to 17:39:16.80, Dur: 9384s
 TimeLngth: 9384.69s, TimeInt: 28ms (34.7pps)
 TimeCor=-13.0s, DSPDif(mn,min,mx):28,28,279
 PPS(min,max,std): 26,36,1.71
 Prof: 394 to 326207, NumProf(t/r): 325813/12802
 ProcTime/Recs: 16:22:32-16:28:40/166426-179227
 MxACQtime: 33ms; DRate: 146.9KB/s; Flags: 0, 0, 0
 Pulse: 275ns, IFfilt: 5.0MHz; ppPol: HH HV VV
 TxPol: HHVV, PRF: 20 10 20 10 kHz
 Range: Delay 75m, Spacing 15m, Gates 75
 Ave. Pulses: 84, Rng/Prof Aspect@90m/s: 5.8

	Min	Max	Mean	Std	Varc%
hhN(dB)	-67.43	-63.67	-65.53	-75.51	10.0
vvN(dB)	-67.32	-63.16	-65.73	-75.48	10.6
hhL(dB)	-11.26	-4.77	-9.04	-17.48	14.3
vvL(dB)	-4.78	-0.74	-2.45	-11.34	12.9
ppN(m/s)	-12.46	12.48	0.08	4.19	
ppT(m/s)	-98.46	98.59	0.63	33.09	
hh/vv(dB)	-NaN	48.63	11.90	27.09	3305
vh/hh(dB)	-NaN	-26.52	-32.64	-33.29	86.1
hv/vv(dB)	-NaN	-31.01	-51.01	-45.87	327.
hnjmp(dB)	-2.32	1.98	-0.07	-8.66	13.8
vnjmp(dB)	-2.37	2.38	-0.08	-8.62	14.0