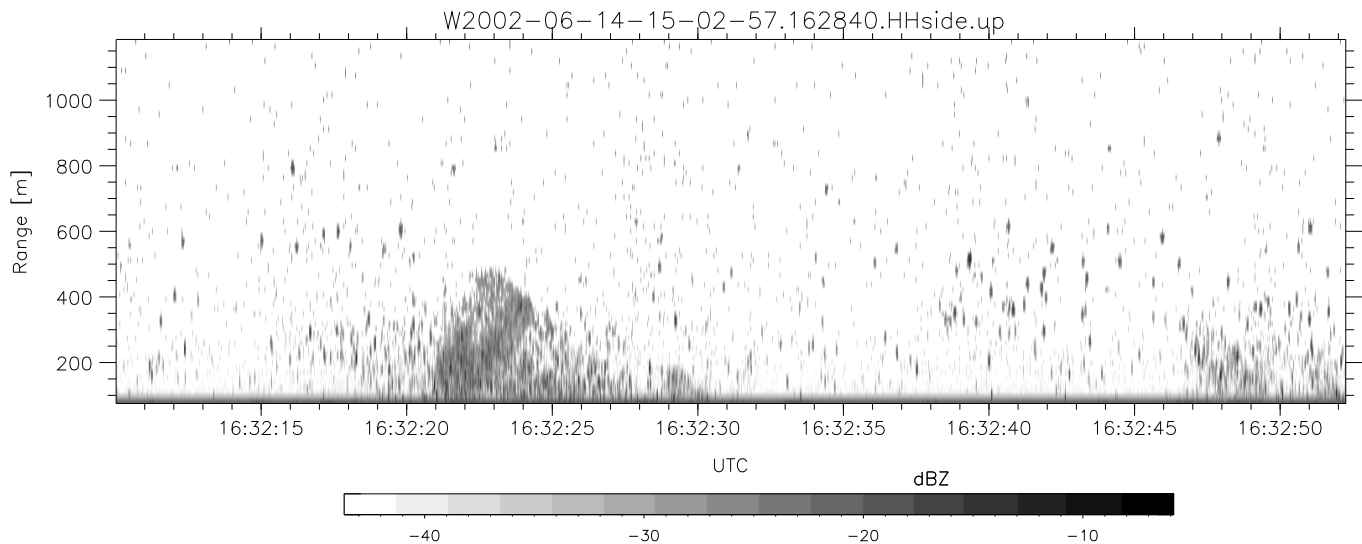
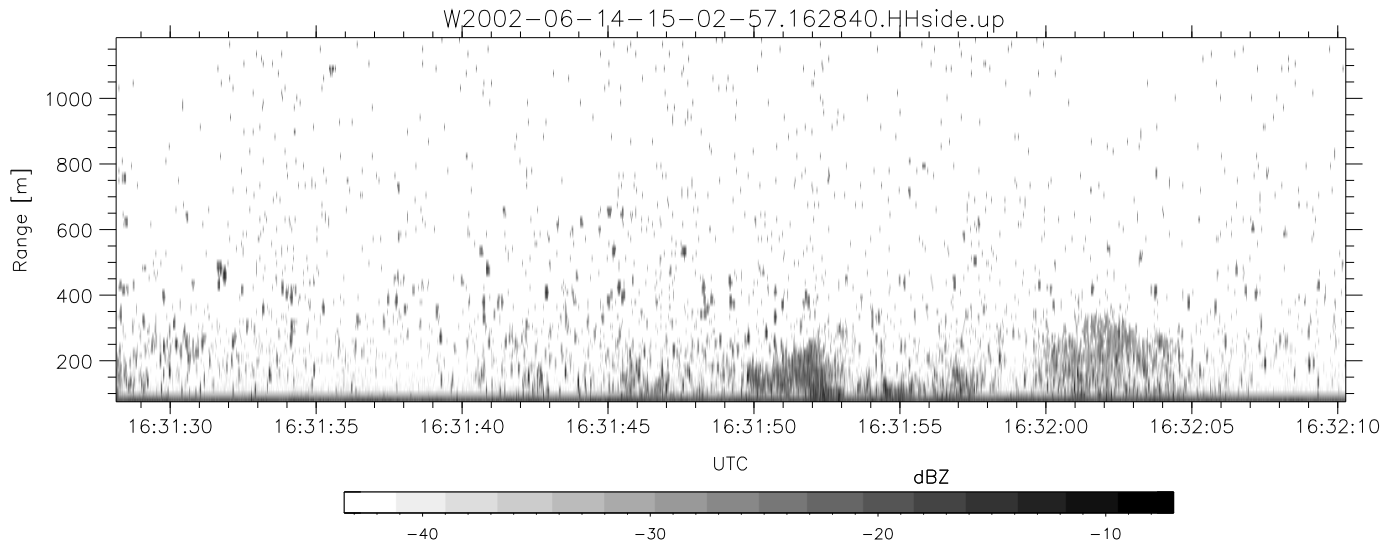
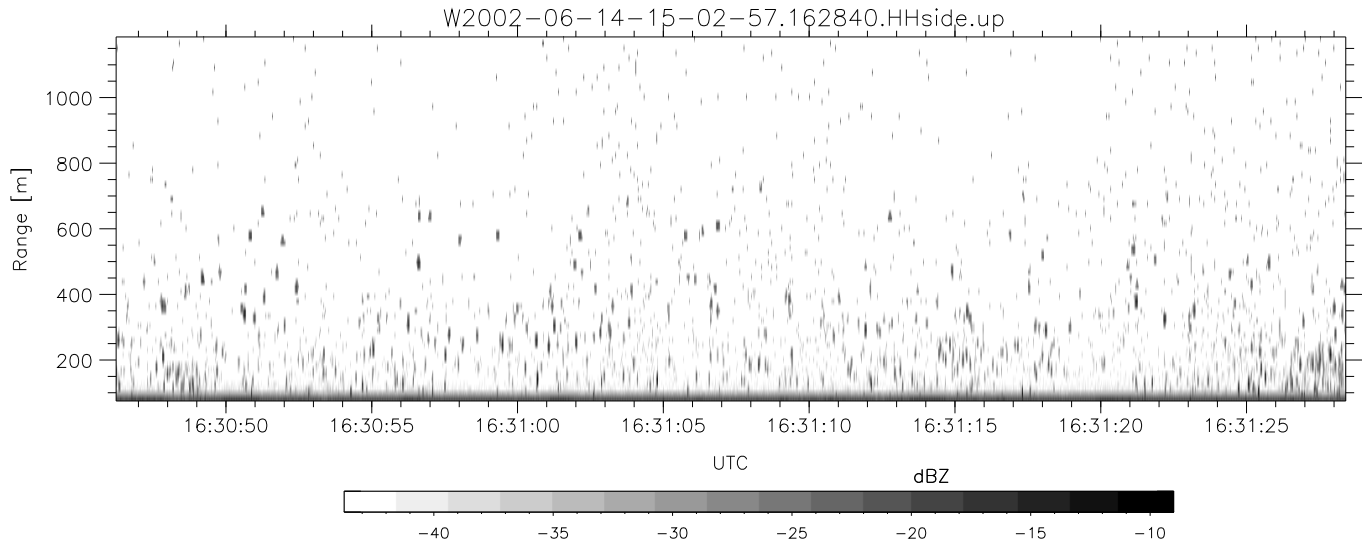


IHOP 2002 (dual-antenna config, modes 1,3,4,7) Data (cal: 49.0,50.0)

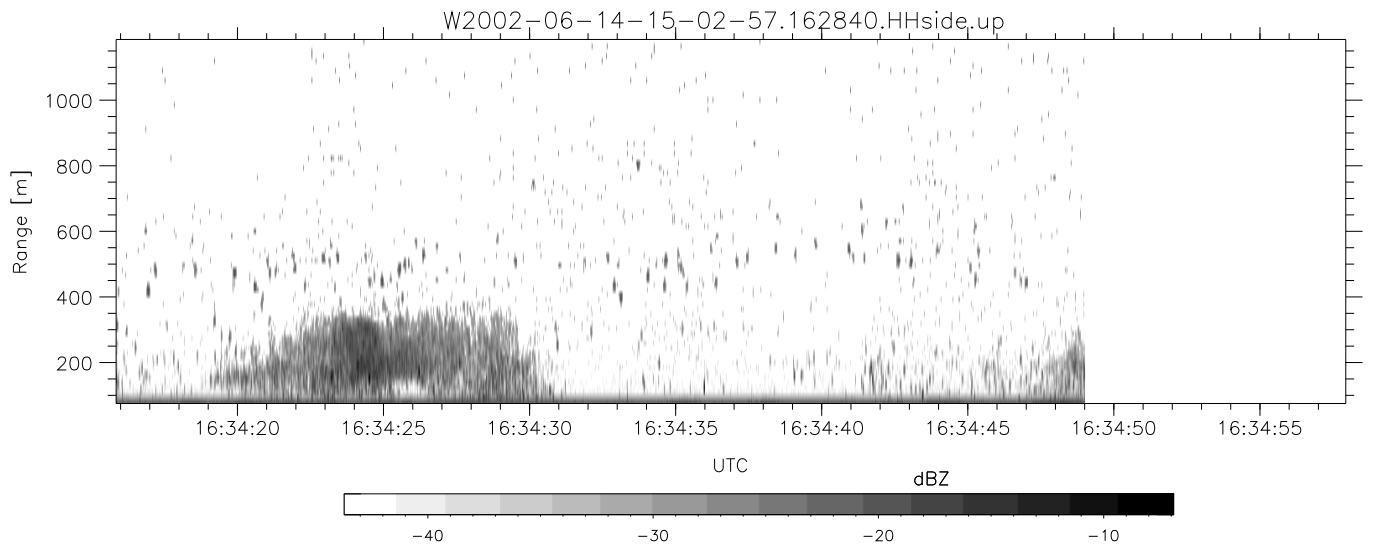
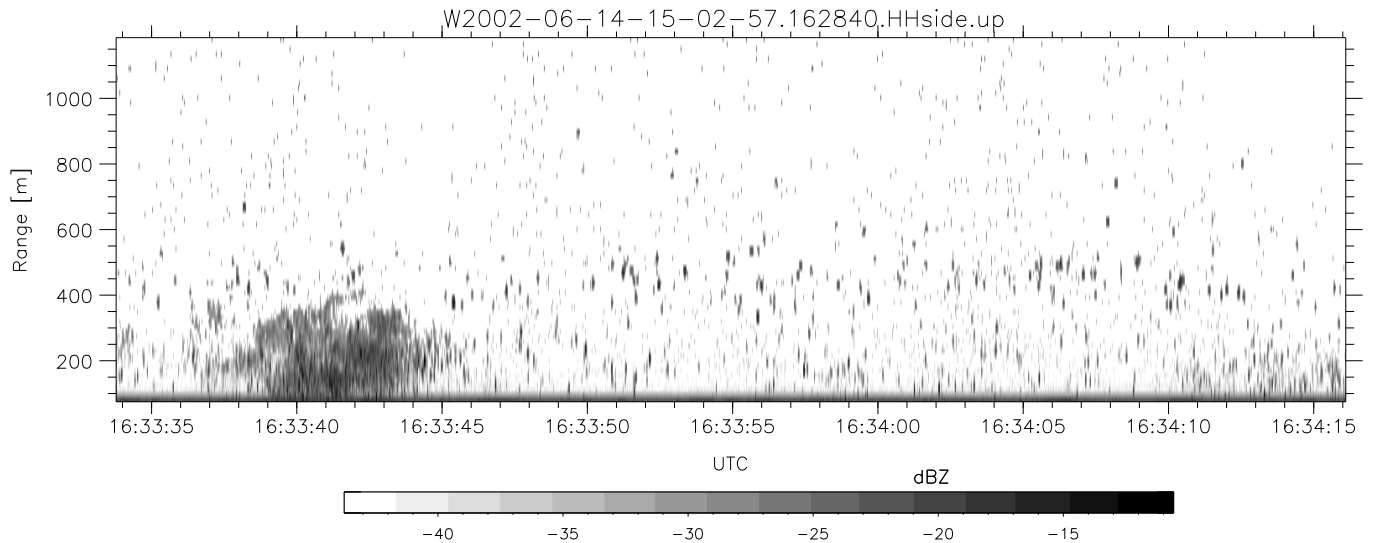
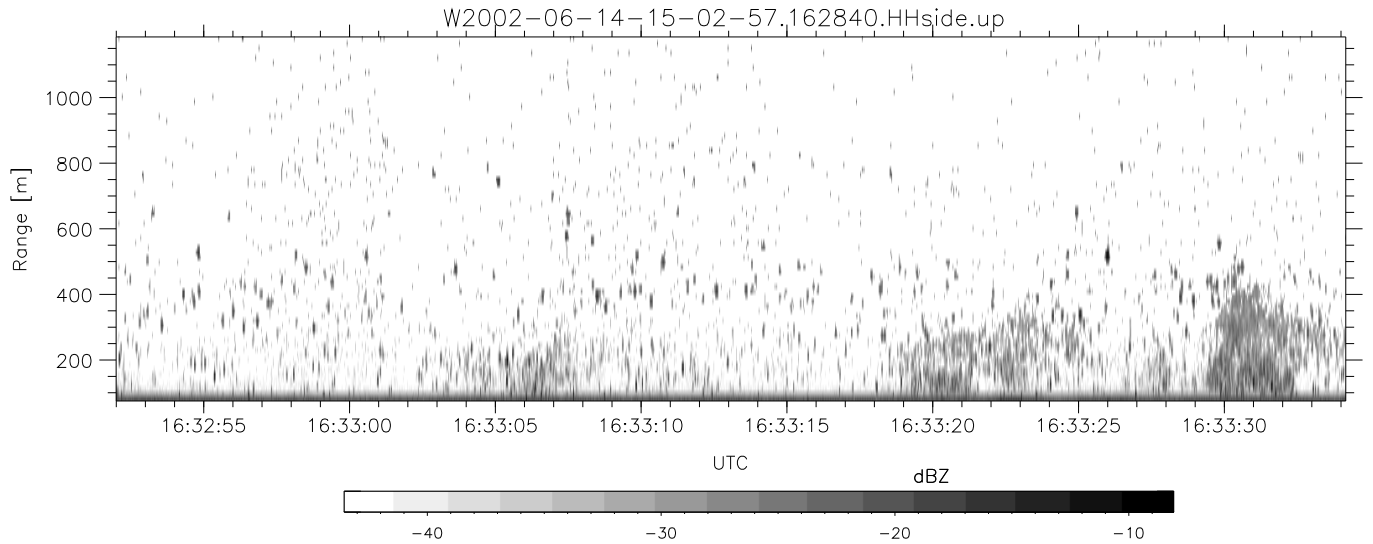
	Min	Max	Mean	Std	Varc%
W2002-06-14-15-02-57 - PPMAG4					
IRIG:1,UTC: 15:02:52.11 to 17:39:16.80, Dur: 9384s					
TimeLngth: 9384.69s, TimeInt: 28ms (34.7pps)					
TimeCor=-13.0s, DSPDif(mn,min,mx):28,28,263					
PPS(min,max,std): 27,36,1.71					
Prof: 394 to 326207, NumProf(t/r): 325813/12802					
ProcTime/Recs: 16:28:40-16:34:49/179228-192029					
MxACQtime: 33ms; DRate: 146.9KB/s; Flags: 0, 0, 0					
Pulse: 275ns, IFfilt: 5.0MHz; ppPol: HH HV VV					
TxPol: HHVV, PRF: 20 10 20 10 kHz					
Range: Delay 75m, Spacing 15m, Gates 75					
Ave. Pulses: 84, Rng/Prof Aspect@90m/s: 5.8					
hhN(dB)	-67.16	-63.98	-65.56	-75.61	9.9
vvN(dB)	-67.53	-64.44	-65.83	-75.86	9.9
hhL(dB)	-11.55	-5.92	-9.25	-18.14	12.9
vvL(dB)	-4.85	-0.85	-2.67	-12.11	11.4
ppN(m/s)	-12.81	12.84	0.07	4.17	
ppT(m/s)	-101.1	101.45	0.56	32.94	
hh/vv(dB)	-NaN	45.38	12.82	25.53	1868
vh/hh(dB)	-NaN	-32.08	-35.25	-37.41	60.9
hv/vv(dB)	-NaN	-32.07	-49.45	-45.68	238.
hnjmp(dB)	-2.30	2.05	-0.08	-8.68	13.8
vnjmp(dB)	-2.33	1.97	-0.07	-8.57	14.1



IHOP 2002 (dual-antenna config, modes 1,3,4,7) Data (cal: 49.0,50.0)

W2002-06-14-15-02-57 - PPMAG4
 IRIG:1,UTC: 15:02:52.11 to 17:39:16.80, Dur: 9384s
 TimeLngth: 9384.69s, TimeInt: 28ms (34.7pps)
 TimeCor=-13.0s, DSPDif(mn,min,mx):28,28,263
 PPS(min,max,std): 27,36,1.71
 Prof: 394 to 326207, NumProf(t/r): 325813/12802
 ProcTime/Recs: 16:28:40-16:34:49/179228-192029
 MxACQtime: 33ms; DRate: 146.9KB/s; Flags: 0, 0, 0
 Pulse: 275ns, IFilt: 5.0MHz; ppPol: HH HV VV
 TxPol: HHVV, PRF: 20 10 20 10 kHz
 Range: Delay 75m, Spacing 15m, Gates 75
 Ave. Pulses: 84, Rng/Prof Aspect@90m/s: 5.8

	Min	Max	Mean	Std	Varc%
hhN(dB)	-67.16	-63.98	-65.56	-75.61	9.9
vvN(dB)	-67.53	-64.44	-65.83	-75.86	9.9
hhL(dB)	-11.55	-5.92	-9.25	-18.14	12.9
vvL(dB)	-4.85	-0.85	-2.67	-12.11	11.4
ppN(m/s)	-12.81	12.84	0.07	4.17	
ppT(m/s)	-101.1	101.45	0.56	32.94	
hh/vv(dB)	-NaN	45.38	12.82	25.53	1868
vh/hh(dB)	-NaN	-32.08	-35.25	-37.41	60.9
hv/vv(dB)	-NaN	-32.07	-49.45	-45.68	238.
hnjmp(dB)	-2.30	2.05	-0.08	-8.68	13.8
vnjmp(dB)	-2.33	1.97	-0.07	-8.57	14.1



IHOP 2002 (dual-antenna config, modes 1,3,4,7) Data (cal: 49.0,50.0)

W2002-06-14-15-02-57 - PPMAG4
 IRIG:1,UTC: 15:02:52.11 to 17:39:16.80, Dur: 9384s
 TimeLngth: 9384.69s, TimeInt: 28ms (34.7pps)
 TimeCor=-13.0s, DSPDif(mn,min,mx):28,28,263
 PPS(min,max,std): 27,36,1.71
 Prof: 394 to 326207, NumProf(t/r): 325813/12802
 ProcTime/Recs: 16:28:40-16:34:49/179228-192029
 MxACQtime: 33ms; DRate: 146.9KB/s; Flags: 0, 0, 0
 Pulse: 275ns, IFfilt: 5.0MHz; ppPol: HH HV VV
 TxPol: HHVV, PRF: 20 10 20 10 kHz
 Range: Delay 75m, Spacing 15m, Gates 75
 Ave. Pulses: 84, Rng/Prof Aspect@90m/s: 5.8

	Min	Max	Mean	Std	Varc%
hhN(dB)	-67.16	-63.98	-65.56	-75.61	9.9
vvN(dB)	-67.53	-64.44	-65.83	-75.86	9.9
hhL(dB)	-11.55	-5.92	-9.25	-18.14	12.9
vvL(dB)	-4.85	-0.85	-2.67	-12.11	11.4
ppN(m/s)	-12.81	12.84	0.07	4.17	
ppT(m/s)	-101.1	101.45	0.56	32.94	
hh/vv(dB)	-NaN	45.38	12.82	25.53	1868
vh/hh(dB)	-NaN	-32.08	-35.25	-37.41	60.9
hv/vv(dB)	-NaN	-32.07	-49.45	-45.68	238.
hh_jmp(dB)	-2.30	2.05	-0.08	-8.68	13.8
vv_jmp(dB)	-2.33	1.97	-0.07	-8.57	14.1