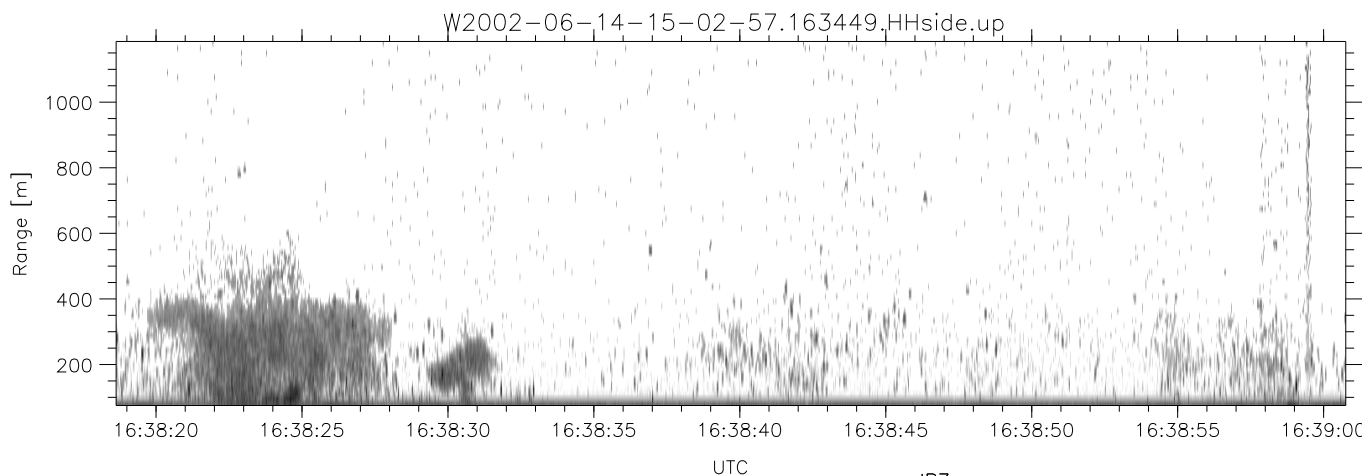
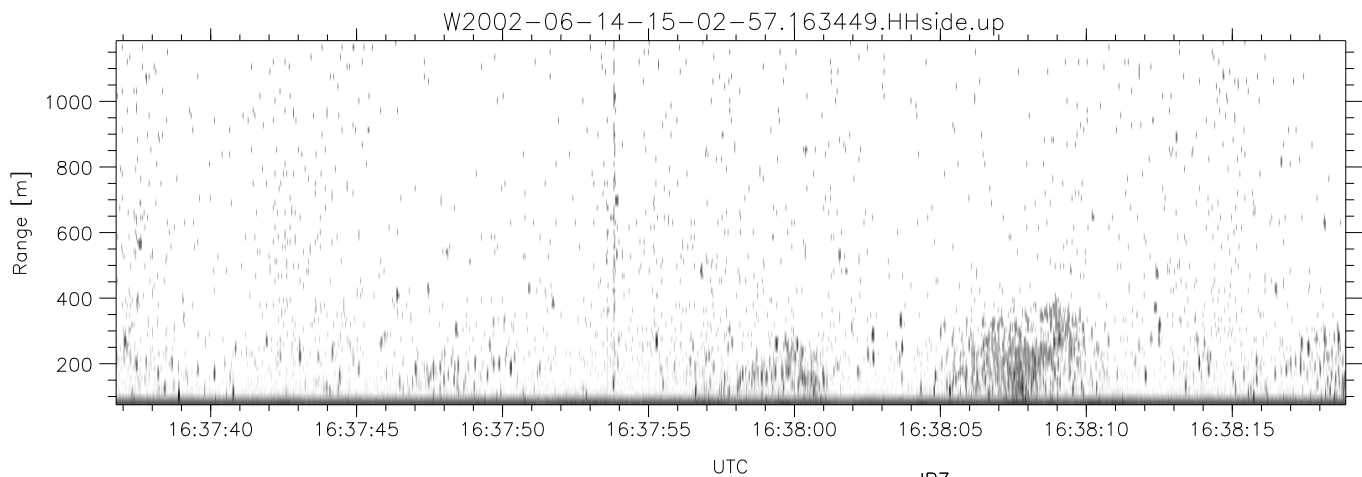
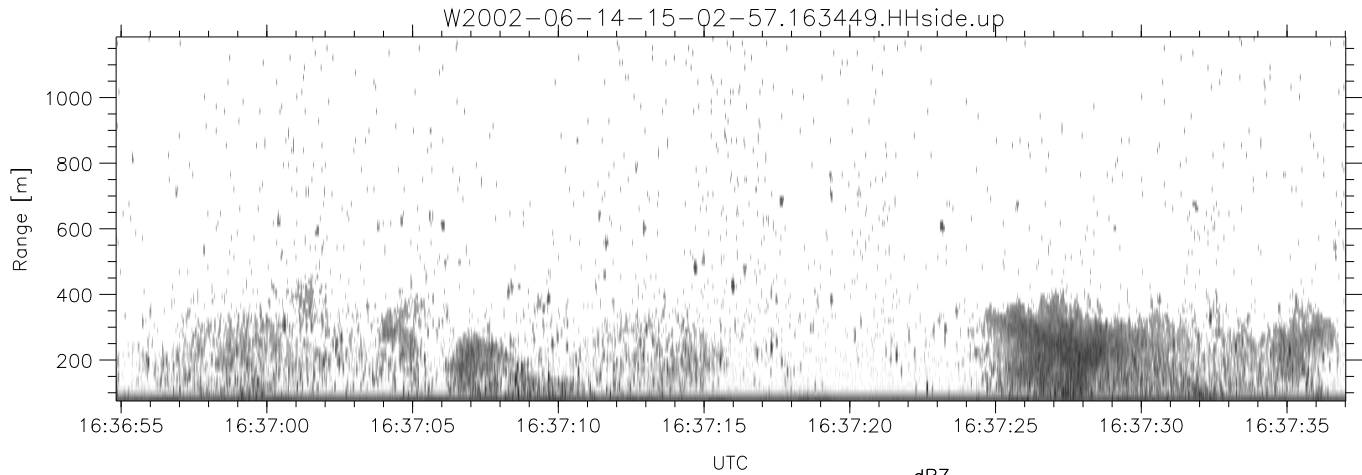


IHOP 2002 (dual-antenna config, modes 1,3,4,7) Data (cal: 49.0,50.0)

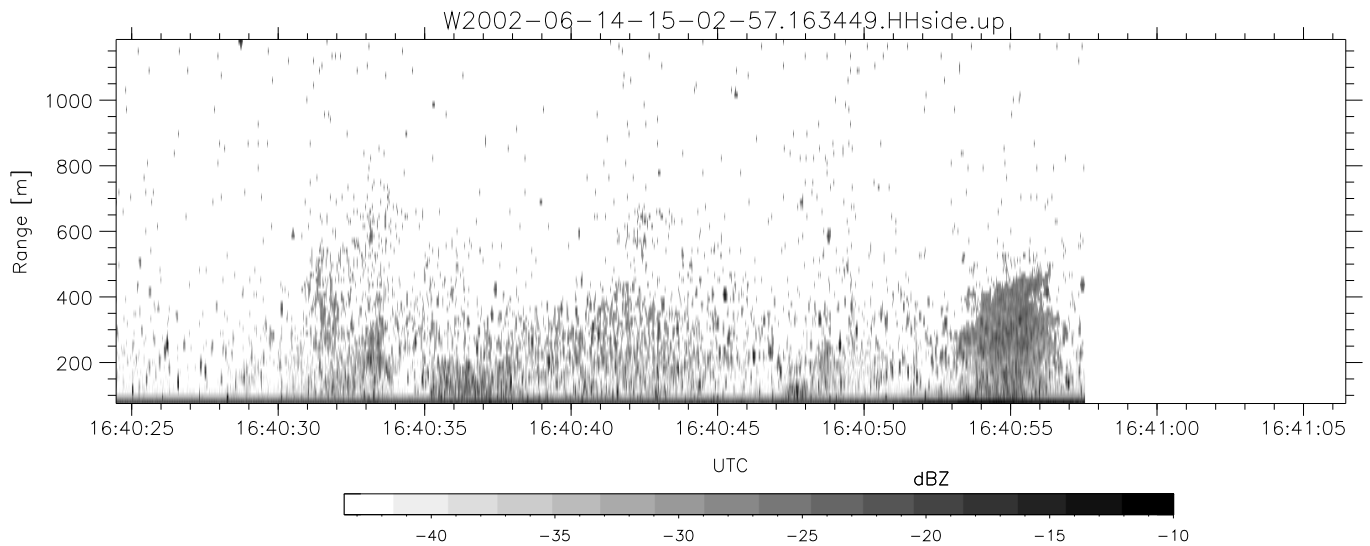
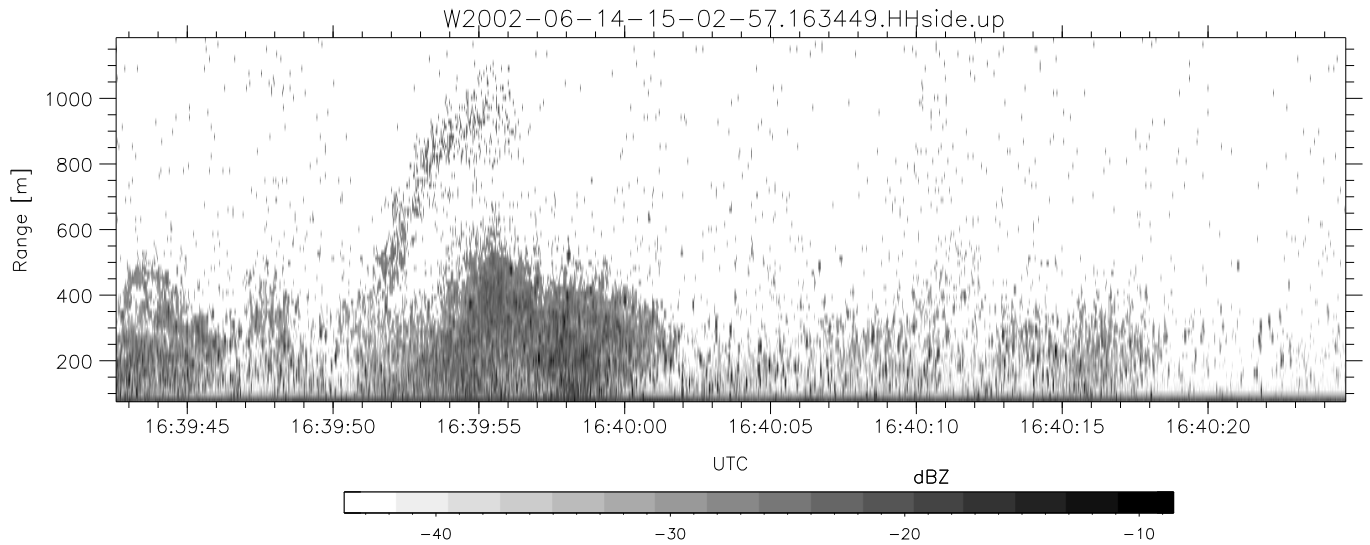
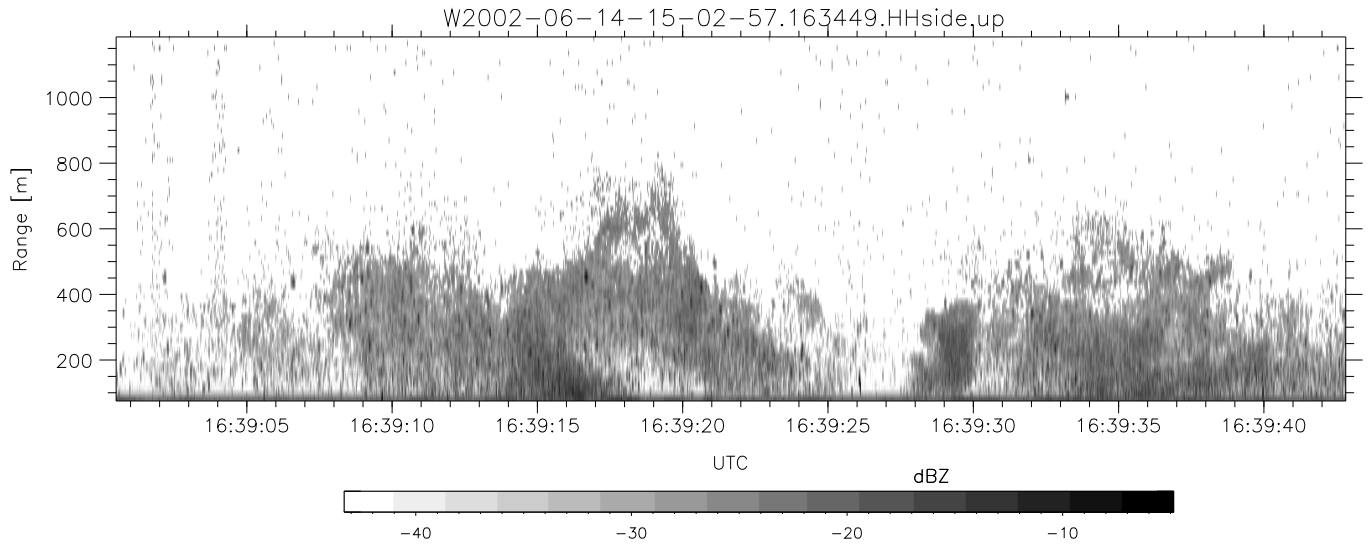
W2002-06-14-15-02-57 - PPMAG4	Min	Max	Mean	Std	Varc%
IRIG:1,UTC: 15:02:52.11 to 17:39:16.80, Dur: 9384s	-67.48	-63.57	-65.55	-75.57	10.0
TimeLngth: 9384.69s, TimeInt: 28ms (34.7pps)	-67.72	-63.76	-65.80	-75.73	10.2
TimeCor=-13.0s, DSPDif(mn,min,mx):28,28,226	-11.80	-3.23	-9.21	-14.92	26.8
PPS(min,max,std): 28,36,1.63	-5.17	-0.71	-2.77	-11.28	14.1
Prof: 394 to 326207, NumProf(t/r): 325813/12802	ppN(m/s)	-12.28	12.15	0.10	4.18
ProcTime/Recs: 16:34:49-16:40:57/192030-204831	ppT(m/s)	-97.00	95.95	0.82	33.01
MxACQtime: 33ms; DRate: 146.9KB/s; Flags: 0, 0, 0	hh/vv(dB)	-NaN	52.29	14.27	30.96 4664
Pulse: 275ns, IFfilt: 5.0MHz; ppPol: HH HV VV	vh/hh(dB)	-NaN	-32.38	-37.04	-36.83 104.
TxPol: HHVV, PRF: 20 10 20 10 kHz	hv/vv(dB)	-NaN	-31.50	-49.22	-45.86 217.
Range: Delay 75m, Spacing 15m, Gates 75	hn/jmp(dB)	-2.73	2.12	-0.09	-8.74 13.6
Ave. Pulses: 84, Rng/Prof Aspect@90m/s: 5.8	vn/jmp(dB)	-2.50	2.04	-0.05	-8.64 13.8



IHOP 2002 (dual-antenna config, modes 1,3,4,7) Data (cal: 49.0,50.0)

W2002-06-14-15-02-57 - PPMAG4  
 IRIG:1,UTC: 15:02:52.11 to 17:39:16.80, Dur: 9384s  
 TimeLngth: 9384.69s, TimeInt: 28ms (34.7pps)  
 TimeCor=-13.0s, DSPDif(mn,min,mx):28,28,226  
 PPS(min,max,std): 28,36,1.63  
 Prof: 394 to 326207, NumProf(t/r): 325813/12802  
 ProcTime/Recs: 16:34:49-16:40:57/192030-204831  
 MxACQtime: 33ms; DRate: 146.9KB/s; Flags: 0, 0, 0  
 Pulse: 275ns, IFfilt: 5.0MHz; ppPol: HH HV VV  
 TxPol: HHVV, PRF: 20 10 20 10 kHz  
 Range: Delay 75m, Spacing 15m, Gates 75  
 Ave. Pulses: 84, Rng/Prof Aspect@90m/s: 5.8

	Min	Max	Mean	Std	Varc%
hhN(dB)	-67.48	-63.57	-65.55	-75.57	10.0
vvN(dB)	-67.72	-63.76	-65.80	-75.73	10.2
hhL(dB)	-11.80	-3.23	-9.21	-14.92	26.8
vvL(dB)	-5.17	-0.71	-2.77	-11.28	14.1
ppN(m/s)	-12.28	12.15	0.10	4.18	
ppT(m/s)	-97.00	95.95	0.82	33.01	
hh/vv(dB)	-NaN	52.29	14.27	30.96	4664
vh/hh(dB)	-NaN	-32.38	-37.04	-36.83	104.
hv/vv(dB)	-NaN	-31.50	-49.22	-45.86	217.
hnjmp(dB)	-2.73	2.12	-0.09	-8.74	13.6
vnjmp(dB)	-2.50	2.04	-0.05	-8.64	13.8



IHOP 2002 (dual-antenna config, modes 1,3,4,7) Data (cal: 49.0,50.0)

	Min	Max	Mean	Std	Varc%
W2002-06-14-15-02-57 - PPMAG4					
IRIG:1,UTC: 15:02:52.11 to 17:39:16.80, Dur: 9384s					
TimeLngth: 9384.69s, TimeInt: 28ms (34.7pps)					
TimeCor=-13.0s, DSPDif(mn,min,mx):28,28,226					
PPS(min,max,std): 28,36,1.63					
Prof: 394 to 326207, NumProf(t/r): 325813/12802	hhN(dB)	-67.48 -63.57	-65.55	-75.57	10.0
MxACQtime: 33ms; DRate: 146.9KB/s; Flags: 0, 0, 0	vvN(dB)	-67.72 -63.76	-65.80	-75.73	10.2
Pulse: 275ns, IFfilt: 5.0MHz; ppPol: HH HV VV	hhL(dB)	-11.80 -3.23	-9.21	-14.92	26.8
TxPol: HHVV, PRF: 20 10 20 10 kHz	vvL(dB)	-5.17 -0.71	-2.77	-11.28	14.1
Range: Delay 75m, Spacing 15m, Gates 75	ppN(m/s)	-12.28 12.15	0.10	4.18	
Ave. Pulses: 84, Rng/Prof Aspect@90m/s: 5.8	ppT(m/s)	-97.00 95.95	0.82	33.01	
	hh/vv(dB)	-NaN 52.29	14.27	30.96	4664
	vh/hh(dB)	-NaN -32.38	-37.04	-36.83	104.
	hv/vv(dB)	-NaN -31.50	-49.22	-45.86	217.
	hn/jmp(dB)	-2.73 2.12	-0.09	-8.74	13.6
	vn/jmp(dB)	-2.50 2.04	-0.05	-8.64	13.8