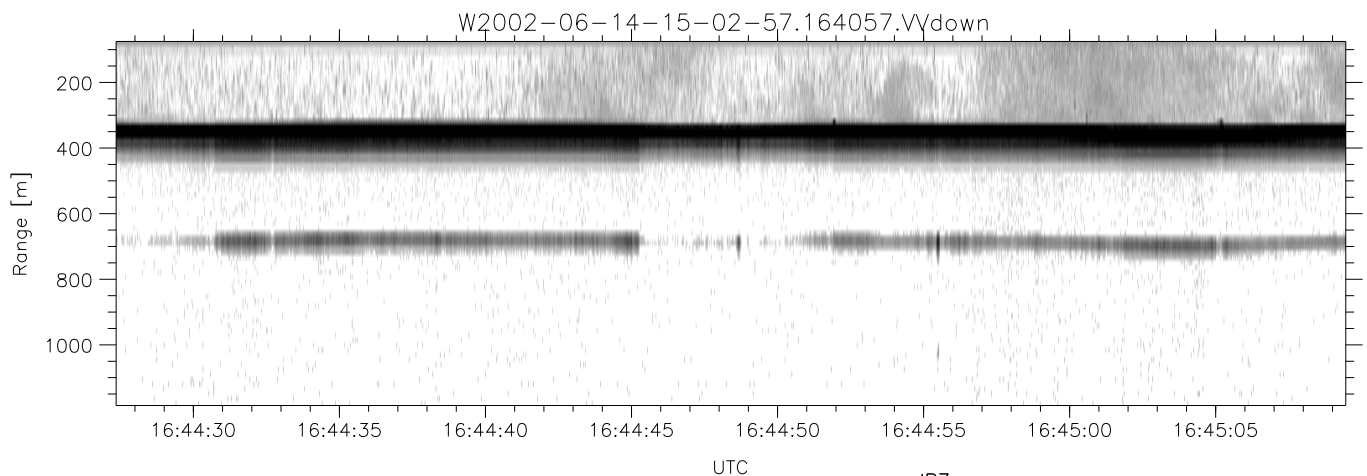
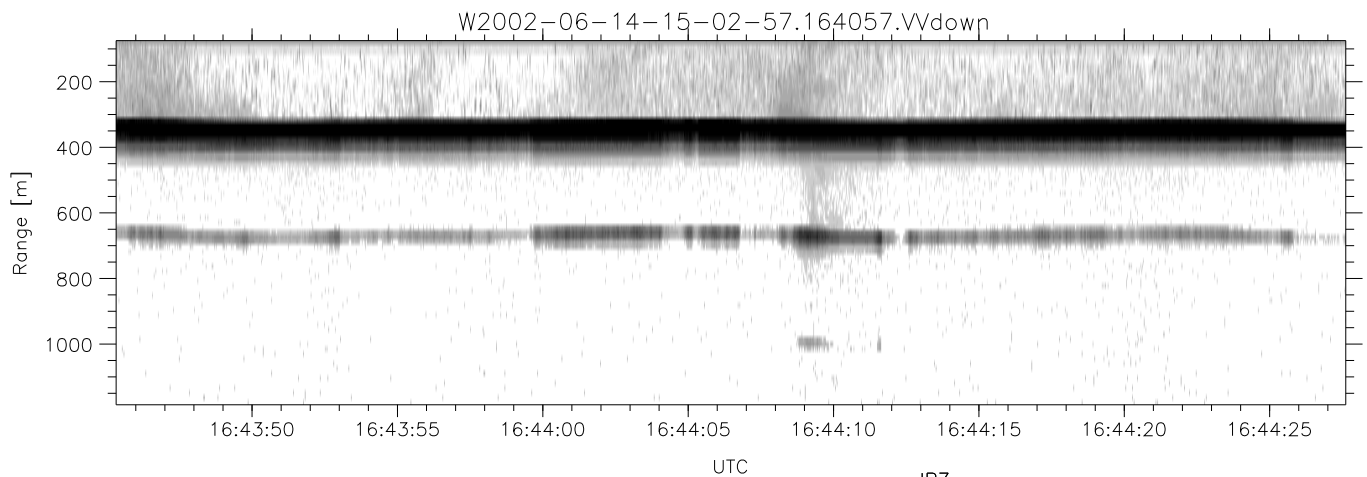
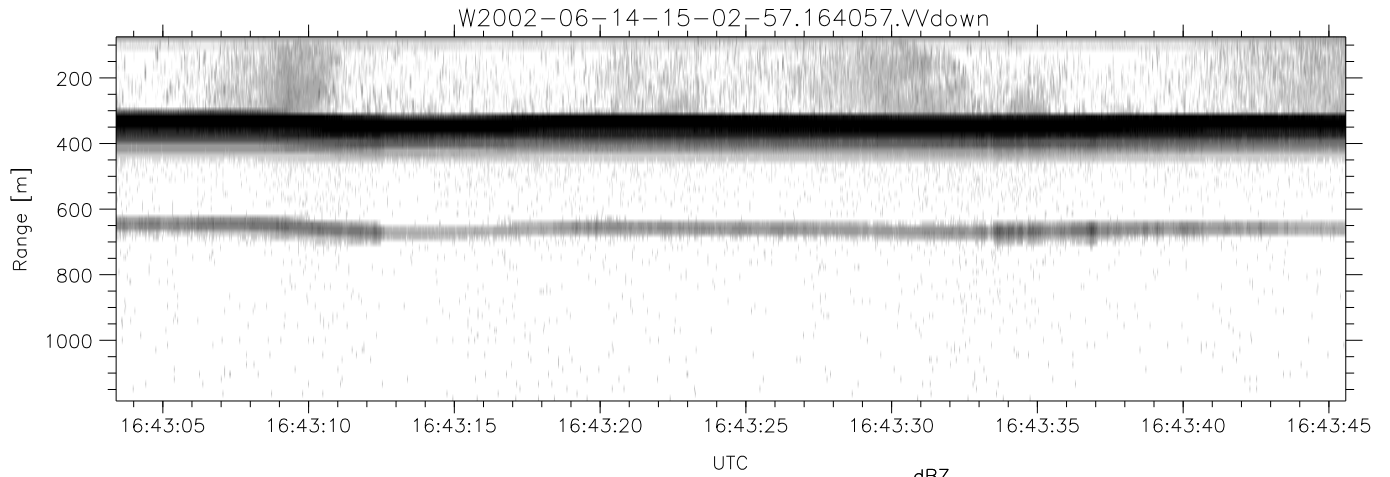


IHOP 2002 (dual-antenna config, modes 1,3,4,7) Data (cal: 49.0,50.0)

W2002-06-14-15-02-57 - PPMAG4
 IRIG:1,UTC: 15:02:52.11 to 17:39:16.80, Dur: 9384s
 TimeLngth: 9384.69s, TimeInt: 28ms (34.7pps)
 TimeCor=-13.0s, DSPDif(mn,min,mx):28,28,231
 PPS(min,max,std): 26,36,1.74
 Prof: 394 to 326207, NumProf(t/r): 325813/12802
 ProcTime/Recs: 16:40:57-16:47:06/204832-217633
 MxACQtime: 33ms; DRate: 146.9KB/s; Flags: 0, 0, 0
 Pulse: 275ns, IFfilt: 5.0MHz; ppPol: HH HV VV
 TxPol: HHVV, PRF: 20 10 20 10 kHz
 Range: Delay 75m, Spacing 15m, Gates 75
 Ave. Pulses: 84, Rng/Prof Aspect@90m/s: 5.8

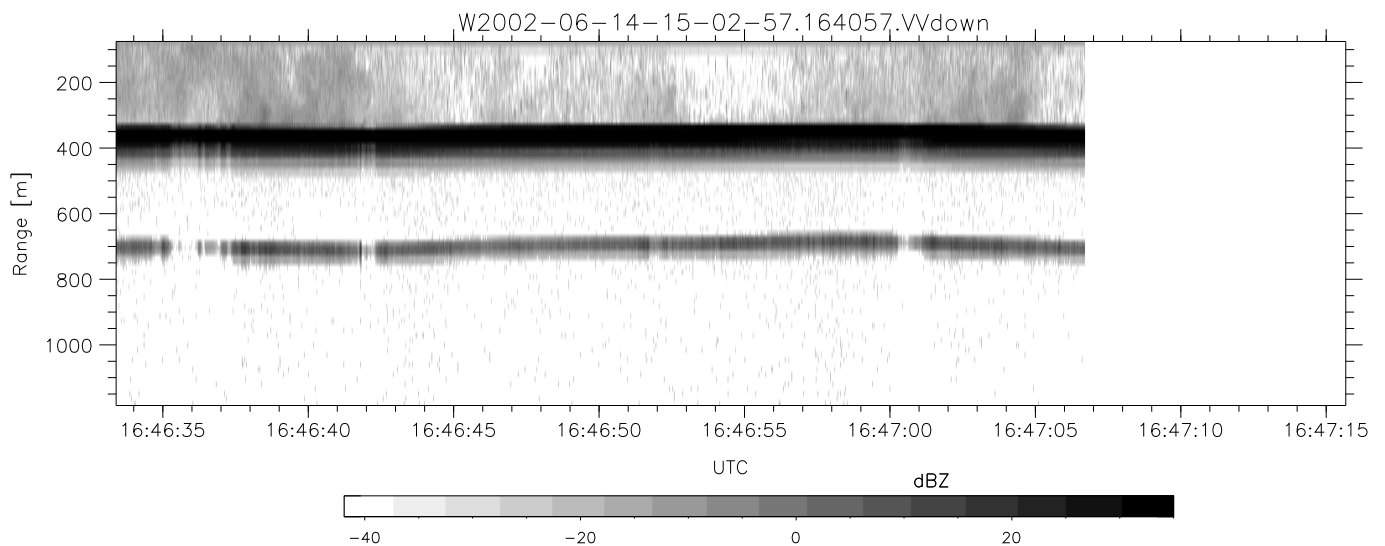
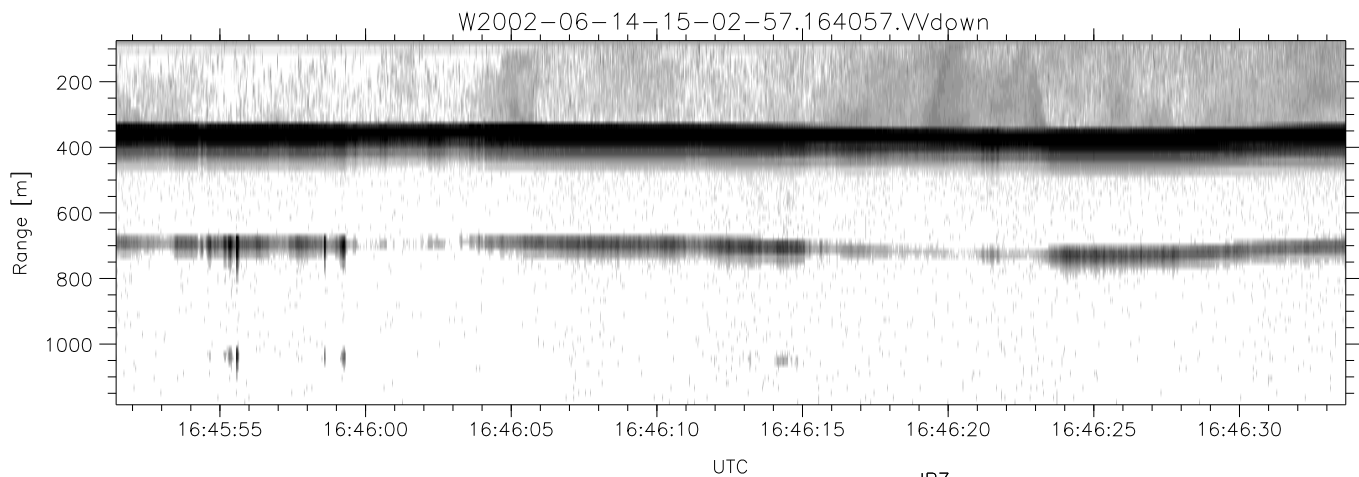
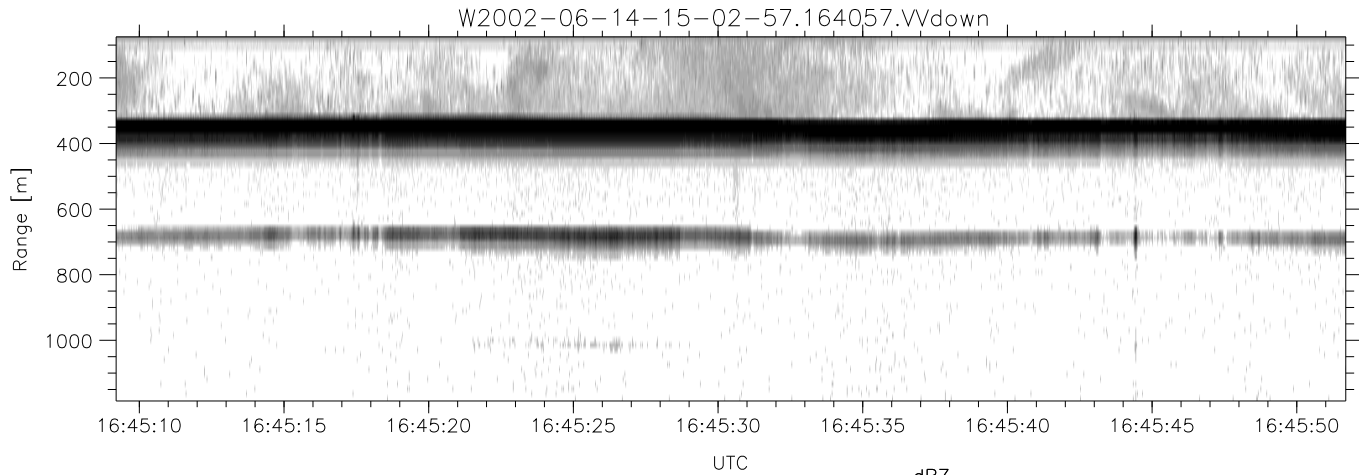
	Min	Max	Mean	Std	Varc%
hhN(dB)	-67.66	-63.93	-65.57	-75.63	9.9
vvN(dB)	-67.44	-63.14	-65.83	-75.72	10.3
hhL(dB)	-11.50	-3.23	-9.19	-15.93	21.2
vvL(dB)	-5.02	-0.71	-2.68	-11.61	12.8
ppN(m/s)	-12.63	12.23	0.07	4.19	
ppT(m/s)	-99.78	96.58	0.59	33.06	
hh/vv(dB)	-NaN	44.69	9.85	30.17	1075
vh/hh(dB)	-NaN	-31.29	-35.35	-36.30	80.4
hv/vv(dB)	-NaN	-30.80	-48.94	-45.74	208.
hnjmp(dB)	-2.46	2.06	-0.07	-8.70	13.7
vnjmp(dB)	-2.94	2.18	-0.07	-8.68	13.8



IHOP 2002 (dual-antenna config, modes 1,3,4,7) Data (cal: 49.0,50.0)

W2002-06-14-15-02-57 - PPMAG4
 IRIG:1,UTC: 15:02:52.11 to 17:39:16.80, Dur: 9384s
 TimeLngth: 9384.69s, TimeInt: 28ms (34.7pps)
 TimeCor=-13.0s, DSPDif(mn,min,mx):28,28,231
 PPS(min,max,std): 26,36,1.74
 Prof: 394 to 326207, NumProf(t/r): 325813/12802
 ProcTime/Recs: 16:40:57-16:47:06/204832-217633
 MxACQtime: 33ms; DRate: 146.9KB/s; Flags: 0, 0, 0
 Pulse: 275ns, IFfilt: 5.0MHz; ppPol: HH HV VV
 TxPol: HHVV, PRF: 20 10 20 10 kHz
 Range: Delay 75m, Spacing 15m, Gates 75
 Ave. Pulses: 84, Rng/Prof Aspect@90m/s: 5.8

	Min	Max	Mean	Std	Varc%
hhN(dB)	-67.66	-63.93	-65.57	-75.63	9.9
vvN(dB)	-67.44	-63.14	-65.83	-75.72	10.3
hhL(dB)	-11.50	-3.23	-9.19	-15.93	21.2
vvL(dB)	-5.02	-0.71	-2.68	-11.61	12.8
ppN(m/s)	-12.63	12.23	0.07	4.19	
ppT(m/s)	-99.78	96.58	0.59	33.06	
hh/vv(dB)	-NaN	44.69	9.85	30.17	1075
vh/hh(dB)	-NaN	-31.29	-35.35	-36.30	80.4
hv/vv(dB)	-NaN	-30.80	-48.94	-45.74	208.
hnjmp(dB)	-2.46	2.06	-0.07	-8.70	13.7
vnjmp(dB)	-2.94	2.18	-0.07	-8.68	13.8



IHOP 2002 (dual-antenna config, modes 1,3,4,7) Data (cal: 49.0,50.0)

W2002-06-14-15-02-57 - PPMAG4
 IRIG:1,UTC: 15:02:52.11 to 17:39:16.80, Dur: 9384s
 TimeLngth: 9384.69s, TimeInt: 28ms (34.7pps)
 TimeCor=-13.0s, DSPDif(mn,min,mx):28,28,231
 PPS(min,max,std): 26,36,1.74
 Prof: 394 to 326207, NumProf(t/r): 325813/12802
 ProcTime/Recs: 16:40:57-16:47:06/204832-217633
 MxACQtime: 33ms; DRate: 146.9KB/s; Flags: 0, 0, 0
 Pulse: 275ns, IFfilt: 5.0MHz; ppPol: HH HV VV
 TxPol: HHVV, PRF: 20 10 20 10 kHz
 Range: Delay 75m, Spacing 15m, Gates 75
 Ave. Pulses: 84, Rng/Prof Aspect@90m/s: 5.8

	Min	Max	Mean	Std	Varc%
hhN(dB)	-67.66	-63.93	-65.57	-75.63	9.9
vvN(dB)	-67.44	-63.14	-65.83	-75.72	10.3
hhL(dB)	-11.50	-3.23	-9.19	-15.93	21.2
vvL(dB)	-5.02	-0.71	-2.68	-11.61	12.8
ppN(m/s)	-12.63	12.23	0.07	4.19	
ppT(m/s)	-99.78	96.58	0.59	33.06	
hh/vv(dB)	-NaN	44.69	9.85	30.17	1075
vh/hh(dB)	-NaN	-31.29	-35.35	-36.30	80.4
hv/vv(dB)	-NaN	-30.80	-48.94	-45.74	208.
hnjmp(dB)	-2.46	2.06	-0.07	-8.70	13.7
vnjmp(dB)	-2.94	2.18	-0.07	-8.68	13.8