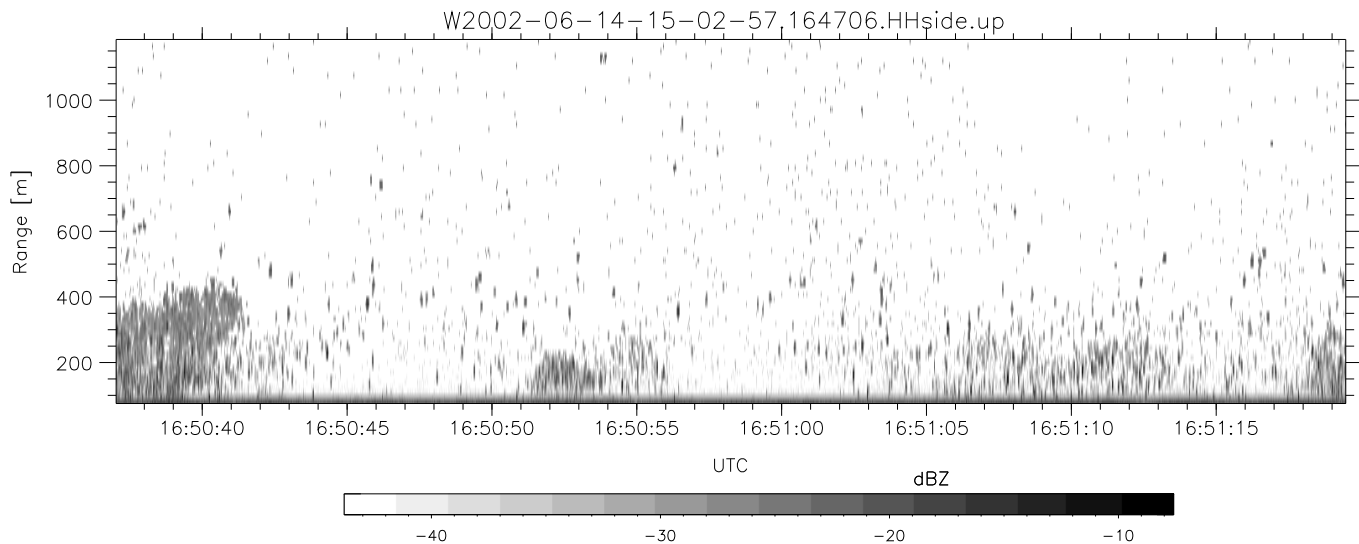
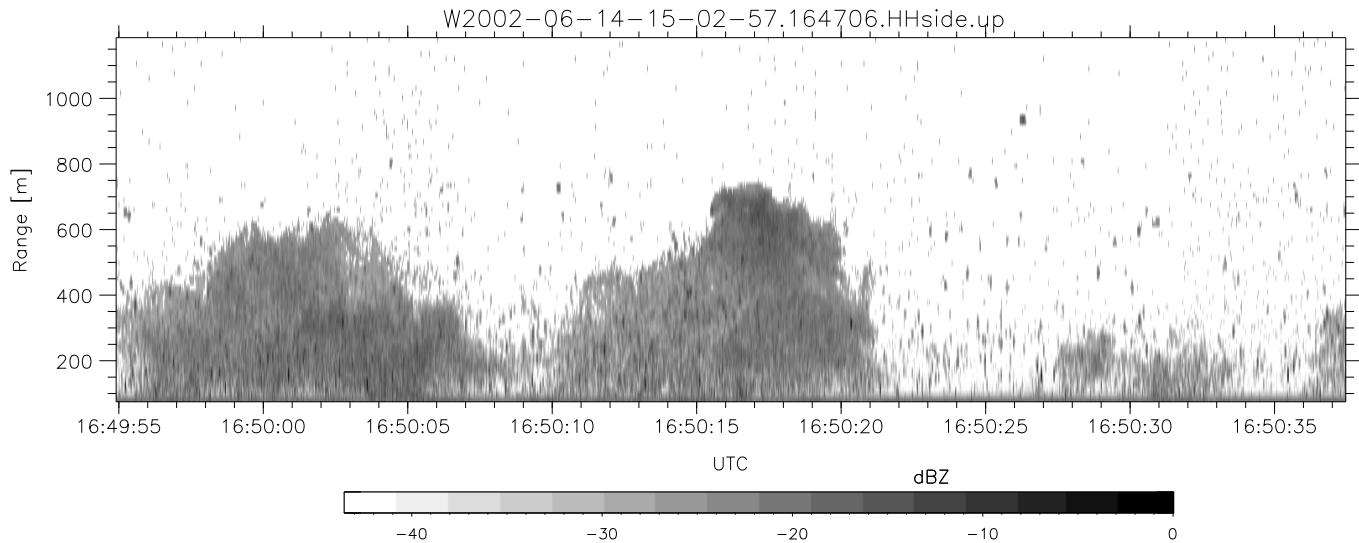
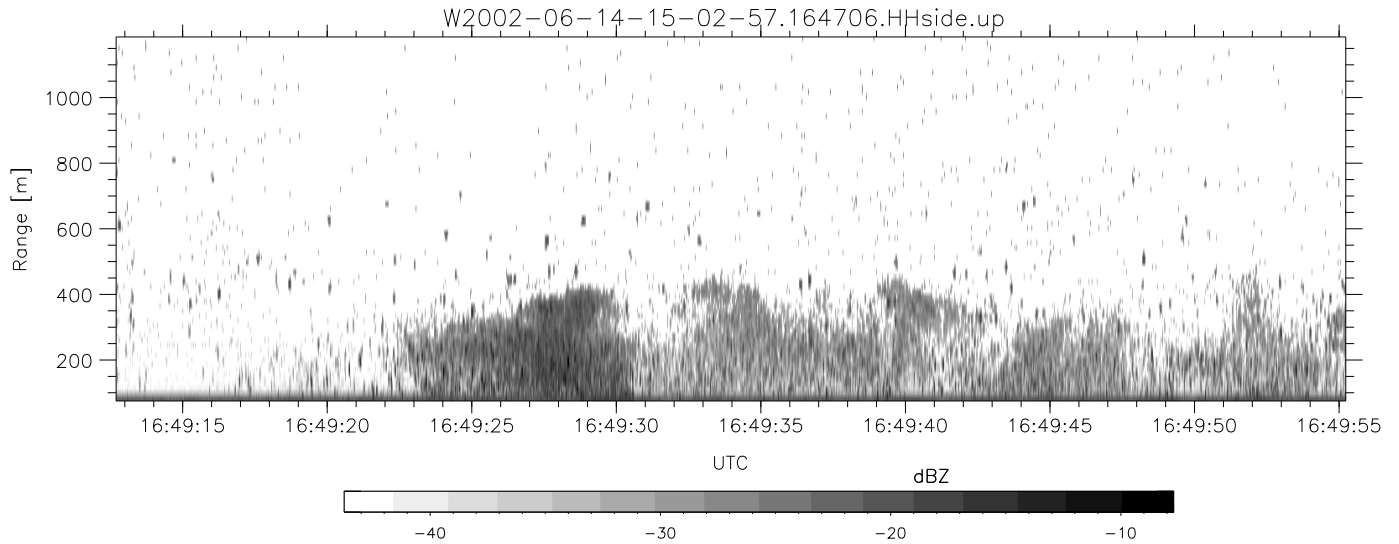


IHOP 2002 (dual-antenna config, modes 1,3,4,7) Data (cal: 49.0,50.0)

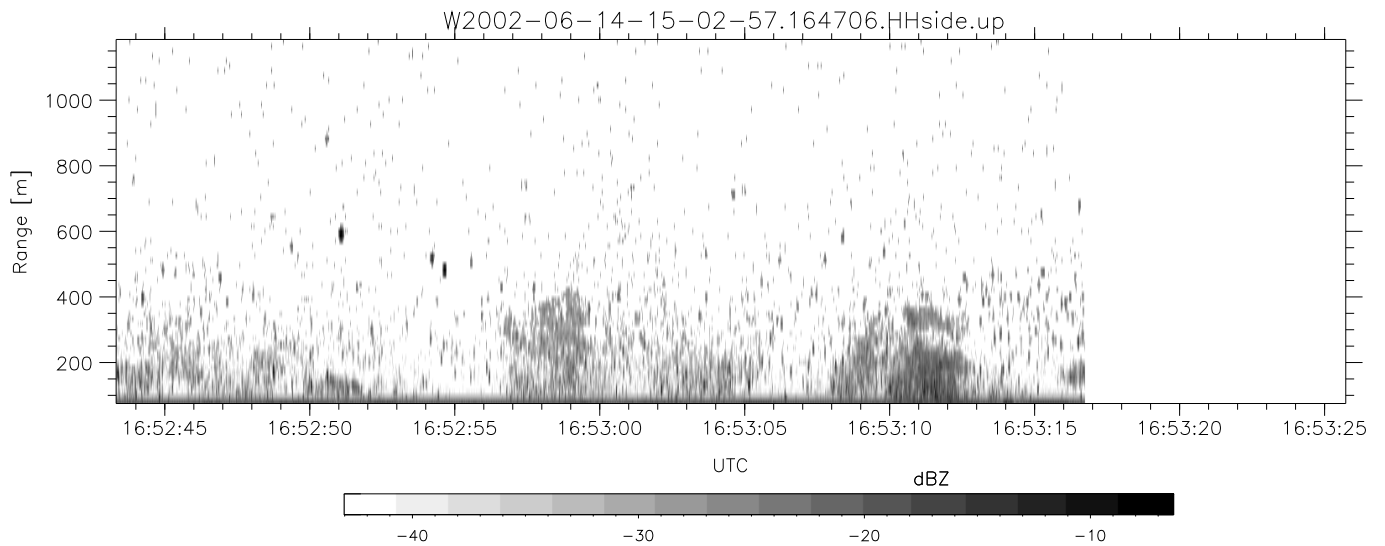
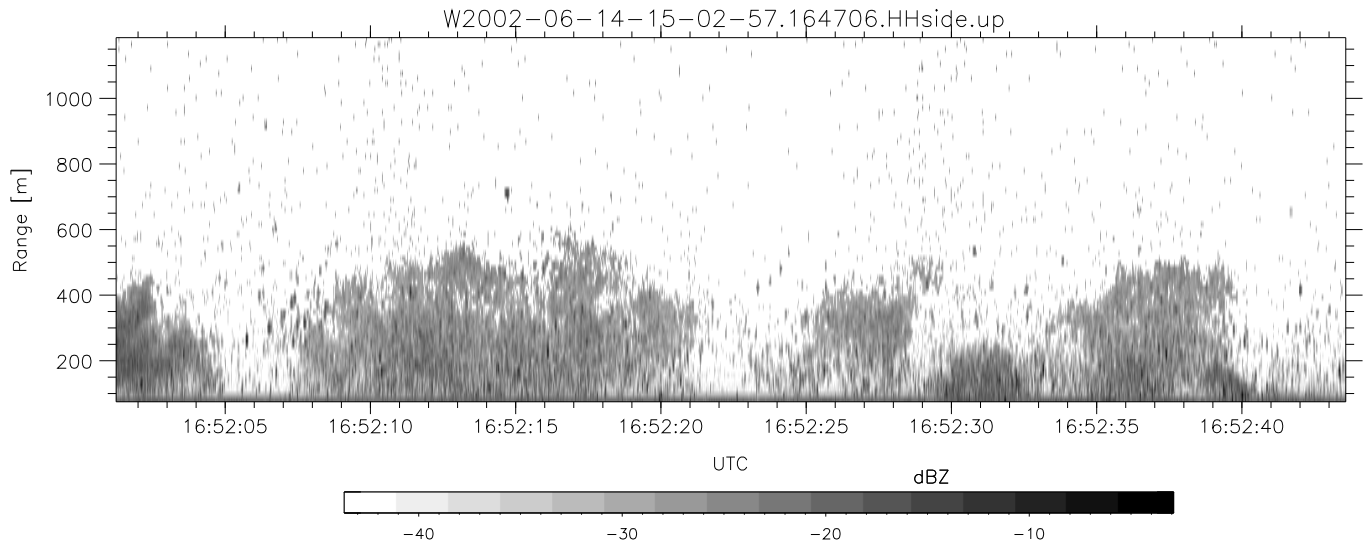
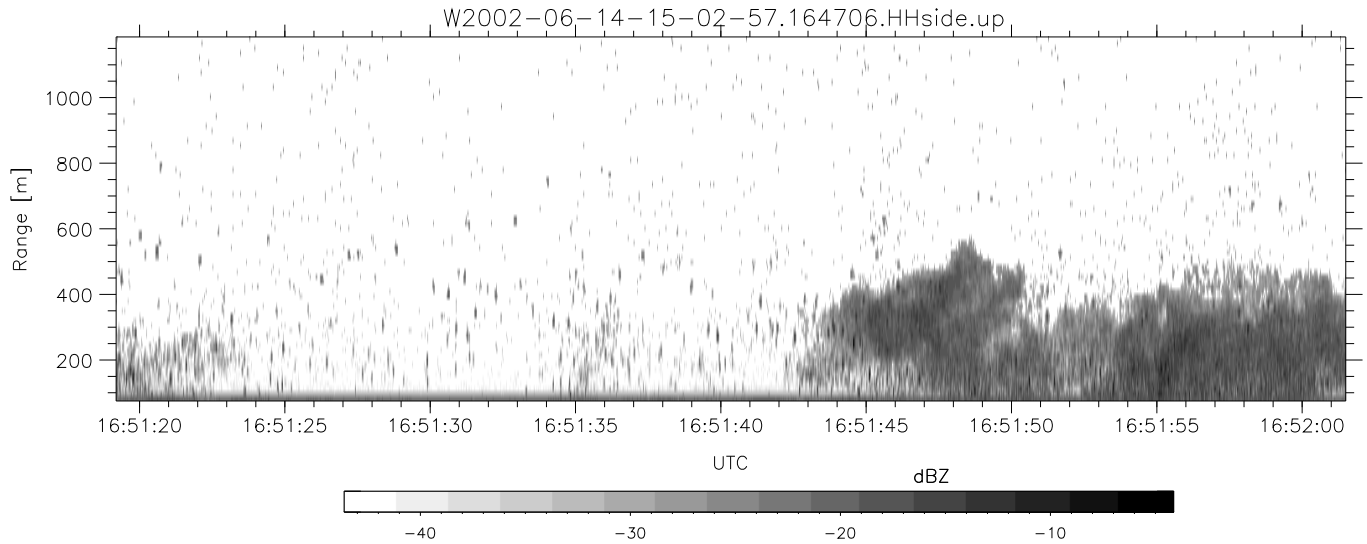
W2002-06-14-15-02-57 - PPMAG4
 IRIG:1,UTC: 15:02:52.11 to 17:39:16.80, Dur: 9384s
 TimeLngth: 9384.69s, TimeInt: 28ms (34.7pps)
 TimeCor=-13.0s, DSPDif(mn,min,mx):28,28,237
 PPS(min,max,std): 27,36,1.76
 Prof: 394 to 326207, NumProf(t/r): 325813/12802
 ProcTime/Recs: 16:47:06-16:53:16/217634-230435
 MxACQtime: 33ms; DRate: 146.9KB/s; Flags: 0, 0, 0
 Pulse: 275ns, IFfilt: 5.0MHz; ppPol: HH HV VV
 TxPol: HHVV, PRF: 20 10 20 10 kHz
 Range: Delay 75m, Spacing 15m, Gates 75
 Ave. Pulses: 84, Rng/Prof Aspect@90m/s: 5.8

	Min	Max	Mean	Std	Varc%
hhN(dB)	-67.45	-64.01	-65.60	-75.65	9.9
vvN(dB)	-67.81	-64.32	-65.87	-75.92	9.9
hhL(dB)	-12.55	-3.97	-9.36	-17.94	13.9
vvL(dB)	-5.10	-0.73	-2.76	-12.04	11.8
ppN(m/s)	-12.27	12.17	-0.01	4.16	
ppT(m/s)	-96.90	96.16	-0.08	32.82	
hh/vv(dB)	-NaN	48.36	11.06	27.70	4608
vh/hh(dB)	-NaN	-30.48	-35.54	-36.65	77.6
hv/vv(dB)	-NaN	-30.67	-49.36	-45.90	221.
hnjmp(dB)	-2.34	2.33	-0.08	-8.64	13.9
vnjmp(dB)	-2.47	2.26	-0.08	-8.65	13.9



IHOP 2002 (dual-antenna config, modes 1,3,4,7) Data (cal: 49.0,50.0)

W2002-06-14-15-02-57 - PPMAG4	Min	Max	Mean	Std	Varc%	
IRIG:1,UTC: 15:02:52.11 to 17:39:16.80, Dur: 9384s	hhN (dB)	-67.45	-64.01	-65.60	-75.65	9.9
TimeLngth: 9384.69s, TimeInt: 28ms (34.7pps)	vvN (dB)	-67.81	-64.32	-65.87	-75.92	9.9
TimeCor=-13.0s, DSPDif(mn,min,mx):28,28,237	hhL (dB)	-12.55	-3.97	-9.36	-17.94	13.9
PPS(min,max,std): 27,36,1.76	vvL (dB)	-5.10	-0.73	-2.76	-12.04	11.8
Prof: 394 to 326207, NumProf(t/r): 325813/12802	ppN (m/s)	-12.27	12.17	-0.01	4.16	
ProcTime/Recs: 16:47:06-16:53:16/217634-230435	ppT (m/s)	-96.90	96.16	-0.08	32.82	
MxACQtime: 33ms; DRate: 146.9KB/s; Flags: 0, 0, 0	hh/vv (dB)	-NaN	48.36	11.06	27.70	4608
Pulse: 275ns, IFilt: 5.0MHz; ppPol: HH HV VV	vh/hh (dB)	-NaN	-30.48	-35.54	-36.65	77.6
TxPol: HHVV, PRF: 20 10 20 10 kHz	hv/vv (dB)	-NaN	-30.67	-49.36	-45.90	221.
Range: Delay 75m, Spacing 15m, Gates 75	hn/jmp (dB)	-2.34	2.33	-0.08	-8.64	13.9
Ave. Pulses: 84, Rng/Prof Aspect@90m/s: 5.8	vn/jmp (dB)	-2.47	2.26	-0.08	-8.65	13.9



IHOP 2002 (dual-antenna config, modes 1,3,4,7) Data (cal: 49.0,50.0)

W2002-06-14-15-02-57 - PPMAG4
 IRIG:1,UTC: 15:02:52.11 to 17:39:16.80, Dur: 9384s
 TimeLngth: 9384.69s, TimeInt: 28ms (34.7pps)
 TimeCor=-13.0s, DSPDif(mn,min,mx):28,28,237
 PPS(min,max,std): 27,36,1.76
 Prof: 394 to 326207, NumProf(t/r): 325813/12802
 ProcTime/Recs: 16:47:06-16:53:16/217634-230435
 MxACQtime: 33ms; DRate: 146.9KB/s; Flags: 0, 0, 0
 Pulse: 275ns, IFfilt: 5.0MHz; ppPol: HH HV VV
 TxPol: HHVV, PRF: 20 10 20 10 kHz
 Range: Delay 75m, Spacing 15m, Gates 75
 Ave. Pulses: 84, Rng/Prof Aspect@90m/s: 5.8

	Min	Max	Mean	Std	Varc%
hhN (dB)	-67.45	-64.01	-65.60	-75.65	9.9
vvN (dB)	-67.81	-64.32	-65.87	-75.92	9.9
hhL (dB)	-12.55	-3.97	-9.36	-17.94	13.9
vvL (dB)	-5.10	-0.73	-2.76	-12.04	11.8
ppN (m/s)	-12.27	12.17	-0.01	4.16	
ppT (m/s)	-96.90	96.16	-0.08	32.82	
hh/vv (dB)	-NaN	48.36	11.06	27.70	4608
vh/hh (dB)	-NaN	-30.48	-35.54	-36.65	77.6
hv/vv (dB)	-NaN	-30.67	-49.36	-45.90	221.
hnjmp (dB)	-2.34	2.33	-0.08	-8.64	13.9
vnjmp (dB)	-2.47	2.26	-0.08	-8.65	13.9