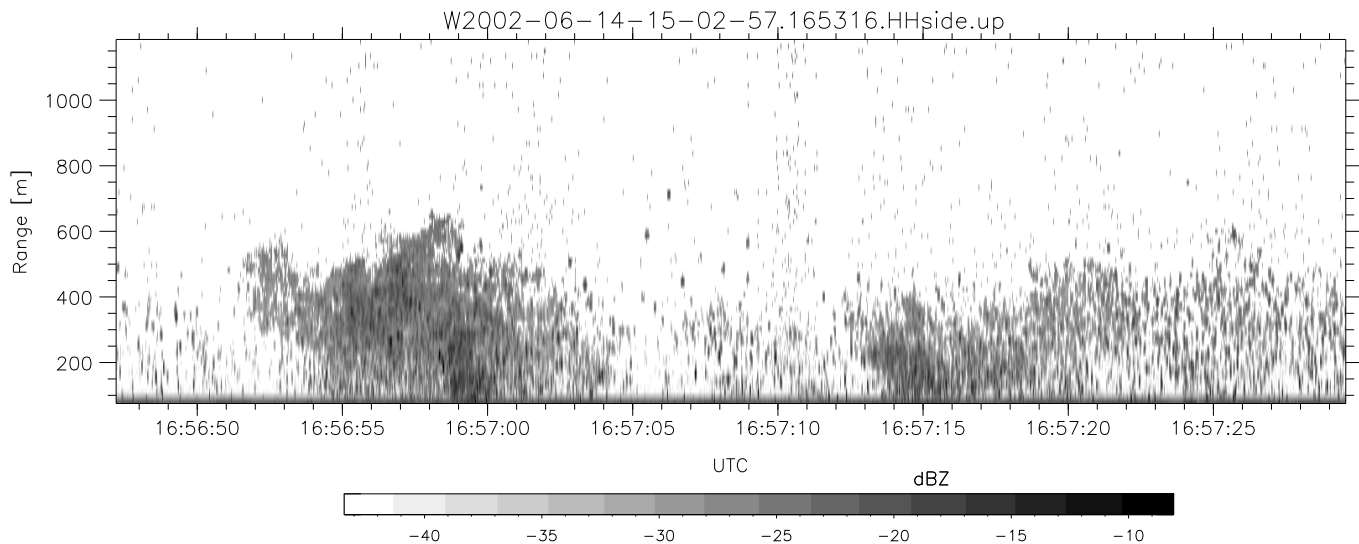
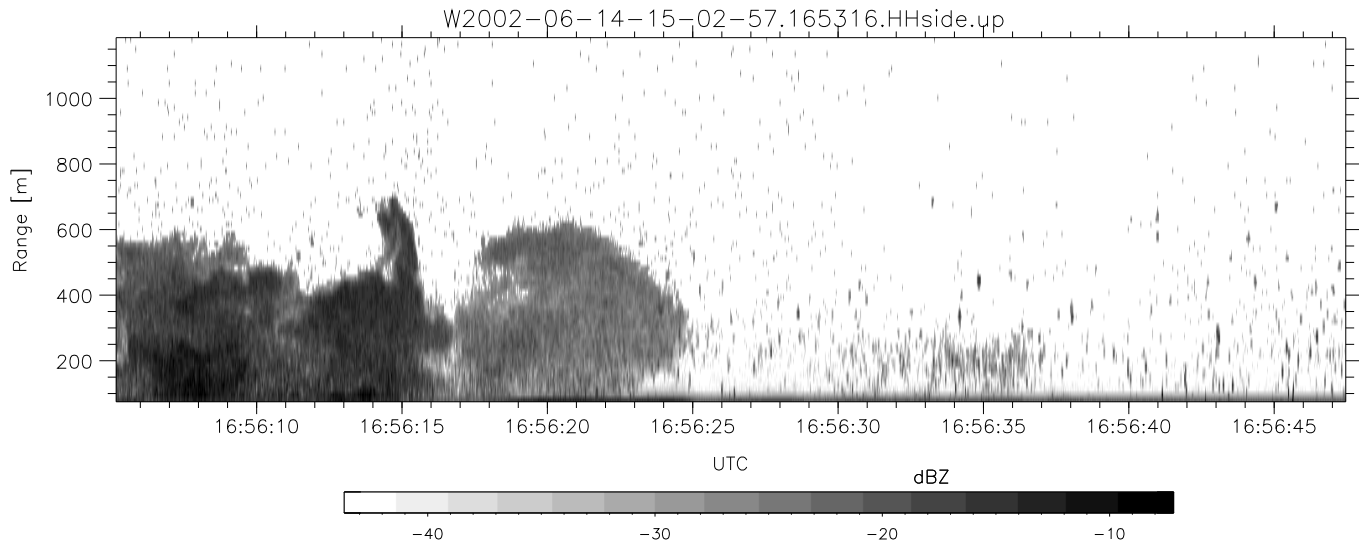
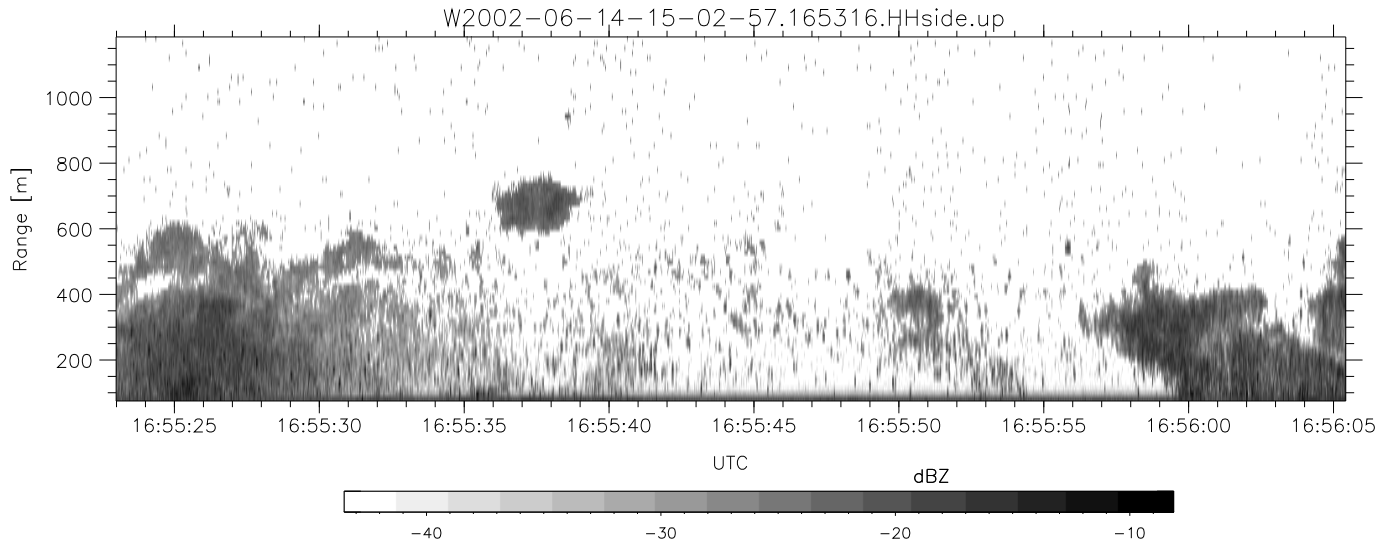


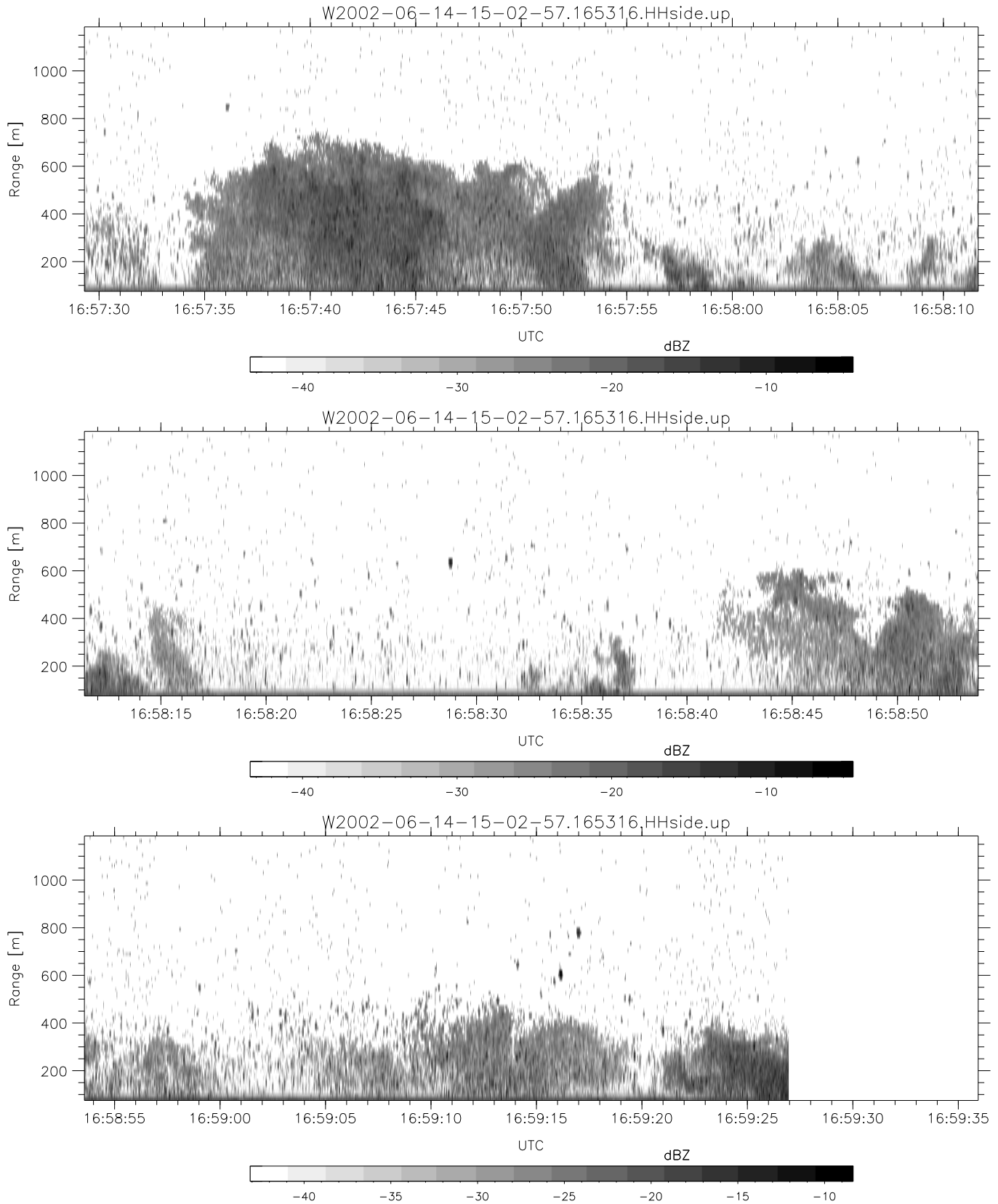
IHOP 2002 (dual-antenna config, modes 1,3,4,7) Data (cal: 49.0,50.0)

W2002-06-14-15-02-57 - PPMAG4	Min	Max	Mean	Std	Varc%	
IRIG:1,UTC: 15:02:52.11 to 17:39:16.80, Dur: 9384s	hhN(dB)	-67.30	-63.95	-65.62	-75.62	10.0
TimeLngth: 9384.69s, TimeInt: 28ms (34.7pps)	vvN(dB)	-67.69	-63.24	-65.85	-75.72	10.3
TimeCor=-13.0s, DSPDif(mn,min,mx):28,28,241	hhL(dB)	-11.85	-2.81	-9.03	-14.49	28.5
PPS(min,max,std): 27,36,1.70	vvL(dB)	-5.36	-0.71	-2.76	-11.29	14.0
Prof: 394 to 326207, NumProf(t/r): 325813/12802	ppN(m/s)	-12.51	12.37	0.06	4.13	
ProcTime/Recs: 16:53:16-16:59:26/230436-243237	ppT(m/s)	-98.80	97.76	0.50	32.62	
MxACQtime: 33ms; DRate: 146.9KB/s; Flags: 0, 0, 0	hh/vv(dB)	-NaN	51.22	12.12	29.32	5246
Pulse: 275ns, IFilt: 5.0MHz; ppPol: HH HV VV	vh/hh(dB)	-NaN	-28.39	-33.74	-35.35	69.1
TxPol: HHVV, PRF: 20 10 20 10 kHz	hv/vv(dB)	-NaN	-33.24	-50.82	-46.32	281.0
Range: Delay 75m, Spacing 15m, Gates 75	hnjmp(dB)	-2.33	2.23	-0.07	-8.68	13.8
Ave. Pulses: 84, Rng/Prof Aspect@90m/s: 5.8	vnjmp(dB)	-2.43	1.93	-0.08	-8.65	13.9



IHOP 2002 (dual-antenna config, modes 1,3,4,7) Data (cal: 49.0,50.0)

	Min	Max	Mean	Std	Varc%
W2002-06-14-15-02-57 - PPMAG4					
IRIG:1,UTC: 15:02:52.11 to 17:39:16.80, Dur: 9384s					
TimeLngth: 9384.69s, TimeInt: 28ms (34.7pps)					
TimeCor=-13.0s, DSPDif(mn,min,mx):28,28,241					
PPS(min,max,std): 27,36,1.70					
Prof: 394 to 326207, NumProf(t/r): 325813/12802					
ProcTime/Recs: 16:53:16-16:59:26/230436-243237					
MxACQtime: 33ms; DRate: 146.9KB/s; Flags: 0, 0, 0					
Pulse: 275ns, IFfilt: 5.0MHz; ppPol: HH HV VV					
TxPol: HHVV, PRF: 20 10 20 10 kHz					
Range: Delay 75m, Spacing 15m, Gates 75					
Ave. Pulses: 84, Rng/Prof Aspect@90m/s: 5.8					
hhN(dB)	-67.30	-63.95	-65.62	-75.62	10.0
vvN(dB)	-67.69	-63.24	-65.85	-75.72	10.3
hhL(dB)	-11.85	-2.81	-9.03	-14.49	28.5
vvL(dB)	-5.36	-0.71	-2.76	-11.29	14.0
ppN(m/s)	-12.51	12.37	0.06	4.13	
ppT(m/s)	-98.80	97.76	0.50	32.62	
hh/vv(dB)	-NaN	51.22	12.12	29.32	5246
vh/hh(dB)	-NaN	-28.39	-33.74	-35.35	69.1
hv/vv(dB)	-NaN	-33.24	-50.82	-46.32	281.
hnjmp(dB)	-2.33	2.23	-0.07	-8.68	13.8
vnjmp(dB)	-2.43	1.93	-0.08	-8.65	13.9



IHOP 2002 (dual-antenna config, modes 1,3,4,7) Data (cal: 49.0,50.0)

W2002-06-14-15-02-57 - PPMAG4  
 IRIG:1,UTC: 15:02:52.11 to 17:39:16.80, Dur: 9384s  
 TimeLngth: 9384.69s, TimeInt: 28ms (34.7pps)  
 TimeCor=-13.0s, DSPDif(mn,min,mx):28,28,241  
 PPS(min,max,std): 27,36,1.70  
 Prof: 394 to 326207, NumProf(t/r): 325813/12802  
 ProcTime/Recs: 16:53:16-16:59:26/230436-243237  
 MxAcQtime: 33ms; DRate: 146.9KB/s; Flags: 0, 0, 0  
 Pulse: 275ns, IFfilt: 5.0MHz; ppPol: HH HV VV  
 TxPol: HHVV, PRF: 20 10 20 10 kHz  
 Range: Delay 75m, Spacing 15m, Gates 75  
 Ave. Pulses: 84, Rng/Prof Aspect@90m/s: 5.8

	Min	Max	Mean	Std	Varc%
hhN(dB)	-67.30	-63.95	-65.62	-75.62	10.0
vvN(dB)	-67.69	-63.24	-65.85	-75.72	10.3
hhL(dB)	-11.85	-2.81	-9.03	-14.49	28.5
vvL(dB)	-5.36	-0.71	-2.76	-11.29	14.0
ppN(m/s)	-12.51	12.37	0.06	4.13	
ppT(m/s)	-98.80	97.76	0.50	32.62	
hh/vv(dB)	-NaN	51.22	12.12	29.32	5246
vh/hh(dB)	-NaN	-28.39	-33.74	-35.35	69.1
hv/vv(dB)	-NaN	-33.24	-50.82	-46.32	281.
hnjmp(dB)	-2.33	2.23	-0.07	-8.68	13.8
vnjmp(dB)	-2.43	1.93	-0.08	-8.65	13.9