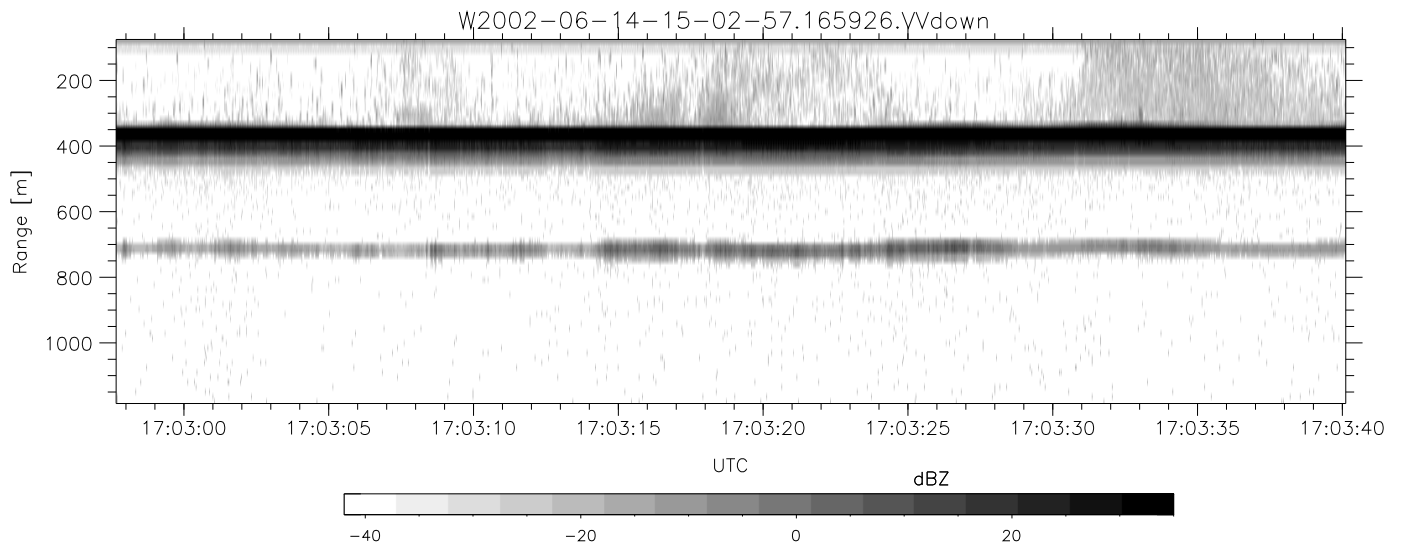
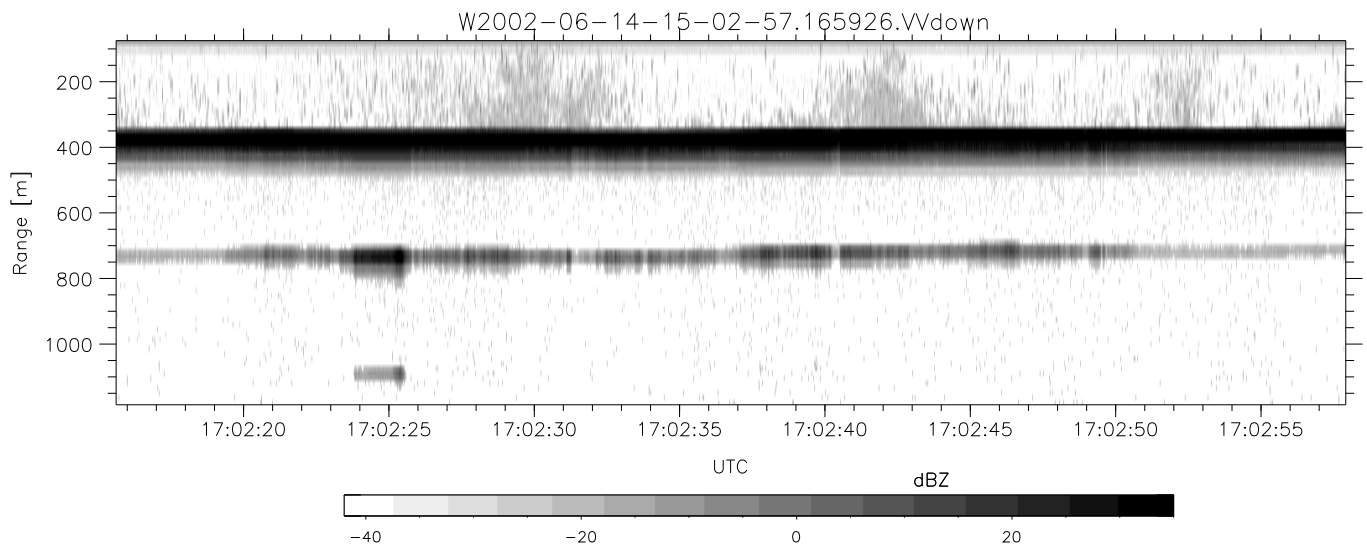
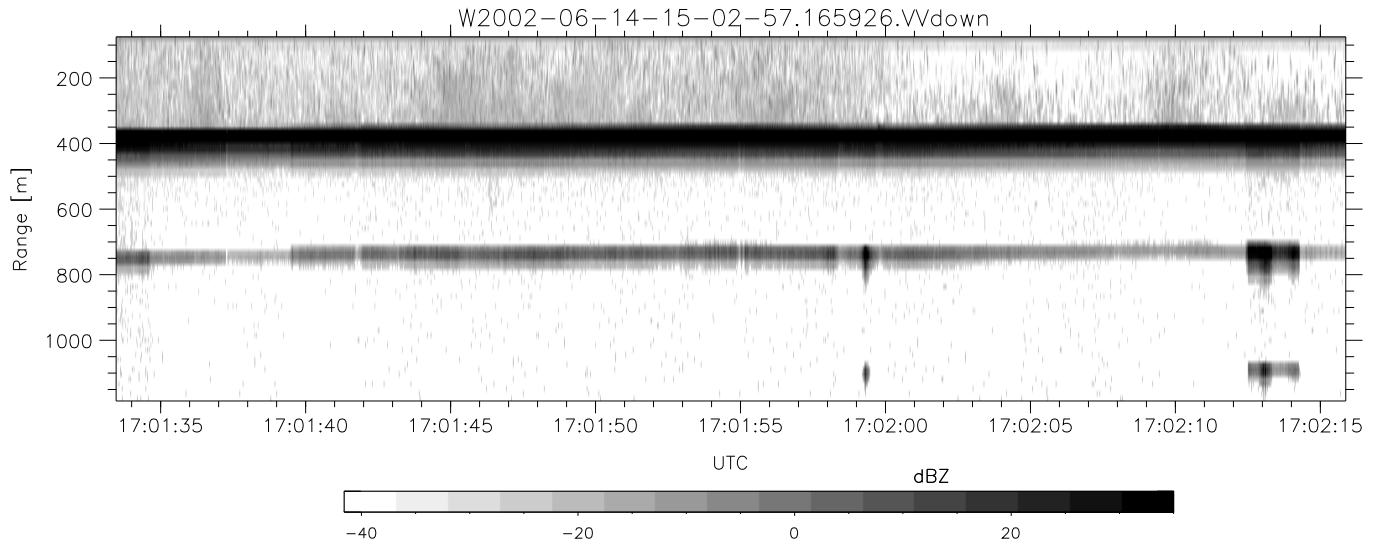


IHOP 2002 (dual-antenna config, modes 1,3,4,7) Data (cal: 49.0,50.0)

W2002-06-14-15-02-57 - PPMAG4  
 IRIG:1,UTC: 15:02:52.11 to 17:39:16.80, Dur: 9384s  
 TimeLngth: 9384.69s, TimeInt: 28ms (34.7pps)  
 TimeCor=-13.0s, DSPDif(mn,min,mx):28,28,304  
 PPS(min,max,std): 25,36,1.67  
 Prof: 394 to 326207, NumProf(t/r): 325813/12802  
 ProcTime/Recs: 16:59:26-17:05:37/243238-256039  
 MxACQtime: 33ms; DRate: 146.9KB/s; Flags: 0, 0, 0  
 Pulse: 275ns, IFfilt: 5.0MHz; ppPol: HH HV VV  
 TxPol: HHVV, PRF: 20 10 20 10 kHz  
 Range: Delay 75m, Spacing 15m, Gates 75  
 Ave. Pulses: 84, Rng/Prof Aspect@90m/s: 5.8

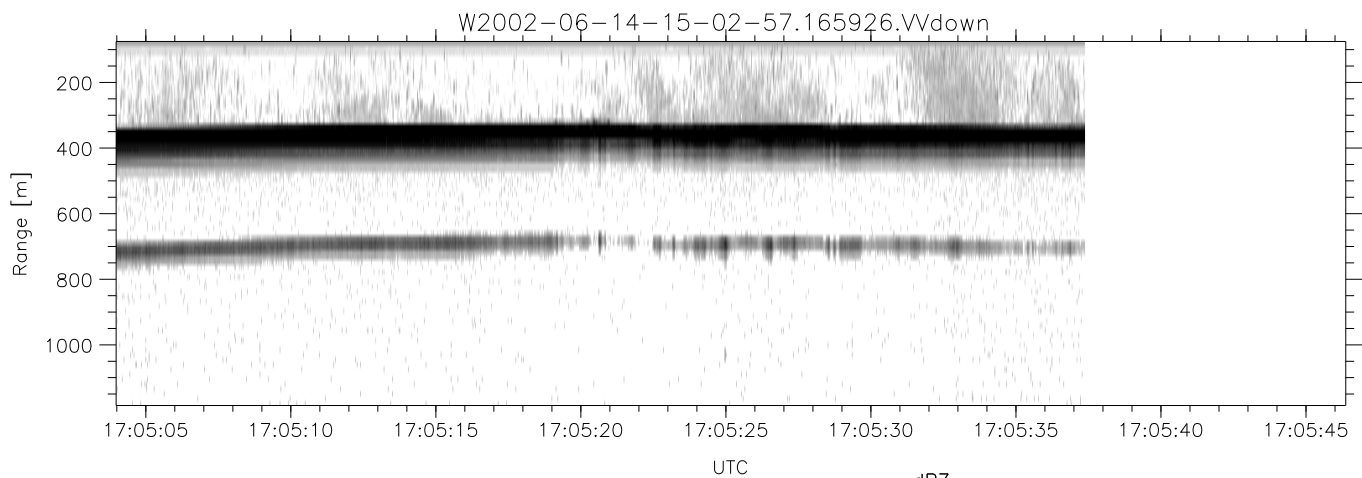
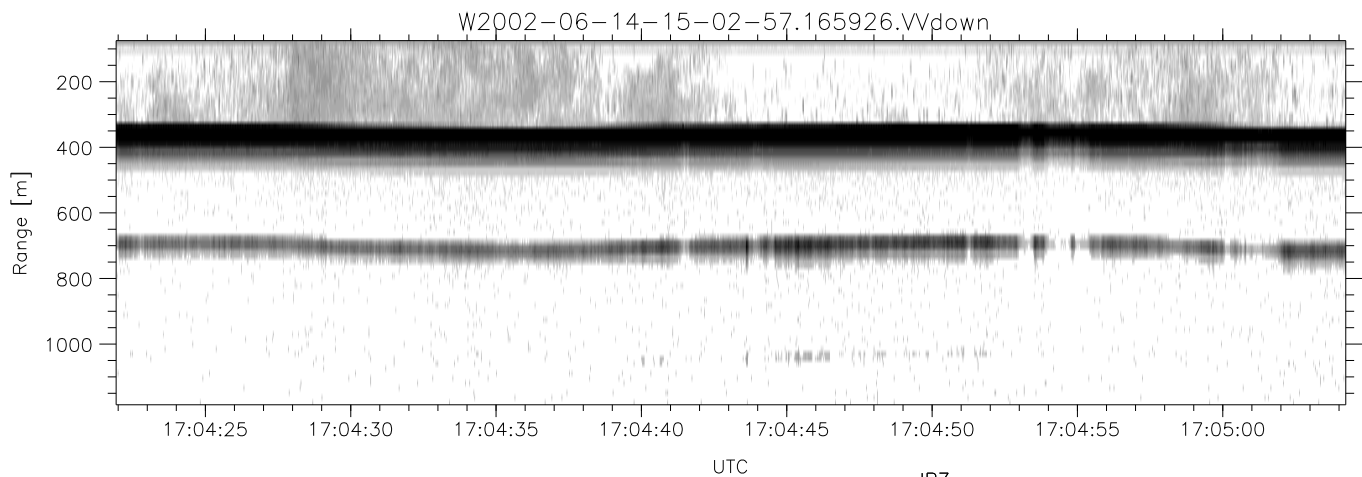
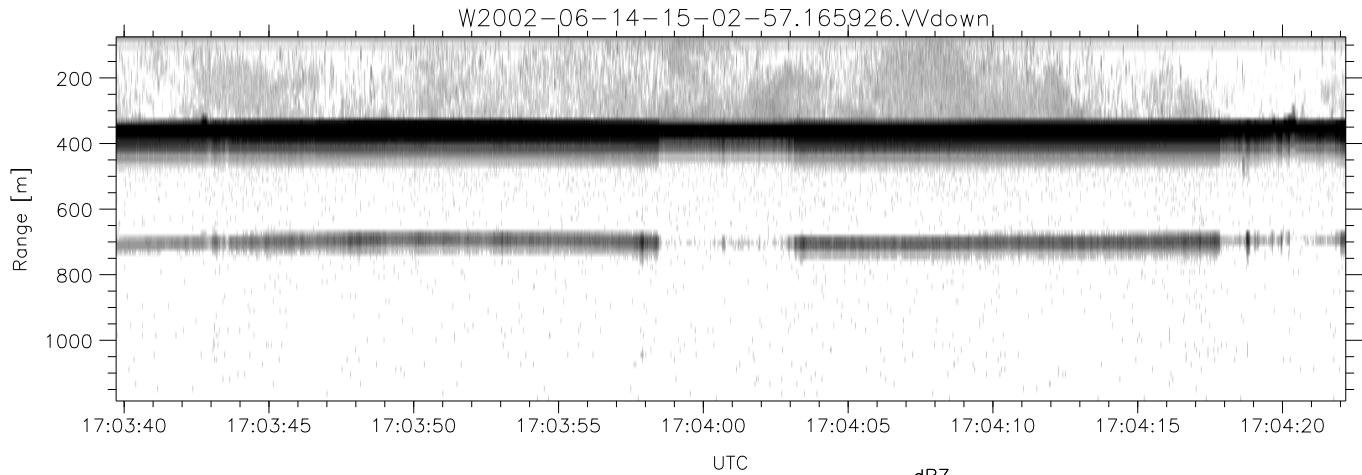
	Min	Max	Mean	Std	Varc%
hhN(dB)	-67.31	-64.13	-65.65	-75.71	9.8
vvN(dB)	-68.08	-64.56	-65.91	-75.94	9.9
hhL(dB)	-11.70	-3.82	-9.27	-18.51	11.9
vvL(dB)	-5.27	-1.09	-2.80	-12.33	11.1
ppN(m/s)	-11.90	12.42	-0.00	4.17	
ppT(m/s)	-93.99	98.14	-0.00	32.92	
hh/vv(dB)	-NaN	42.36	9.31	28.53	8347
vh/hh(dB)	-NaN	-29.10	-34.47	-35.63	76.5
hv/vv(dB)	-NaN	-31.27	-49.12	-45.60	225.
hnjmp(dB)	-2.14	2.09	-0.08	-8.65	13.9
vnjmp(dB)	-2.30	2.48	-0.07	-8.57	14.1



IHOP 2002 (dual-antenna config, modes 1,3,4,7) Data (cal: 49.0,50.0)

W2002-06-14-15-02-57 - PPMAG4  
 IRIG:1,UTC: 15:02:52.11 to 17:39:16.80, Dur: 9384s  
 TimeLngth: 9384.69s, TimeInt: 28ms (34.7pps)  
 TimeCor=-13.0s, DSPDif(mn,min,mx):28,28,304  
 PPS(min,max,std): 25,36,1.67  
 Prof: 394 to 326207, NumProf(t/r): 325813/12802  
 ProcTime/Recs: 16:59:26-17:05:37/243238-256039  
 MxACQtime: 33ms; DRate: 146.9KB/s; Flags: 0, 0, 0  
 Pulse: 275ns, IFfilt: 5.0MHz; ppPol: HH HV VV  
 TxPol: HHVV, PRF: 20 10 20 10 kHz  
 Range: Delay 75m, Spacing 15m, Gates 75  
 Ave. Pulses: 84, Rng/Prof Aspect@90m/s: 5.8

	Min	Max	Mean	Std	Varc%
hhN(dB)	-67.31	-64.13	-65.65	-75.71	9.8
vvN(dB)	-68.08	-64.56	-65.91	-75.94	9.9
hhL(dB)	-11.70	-3.82	-9.27	-18.51	11.9
vvL(dB)	-5.27	-1.09	-2.80	-12.33	11.1
ppN(m/s)	-11.90	12.42	-0.00	4.17	
ppT(m/s)	-93.99	98.14	-0.00	32.92	
hh/vv(dB)	-NaN	42.36	9.31	28.53	8347
vh/hh(dB)	-NaN	-29.10	-34.47	-35.63	76.5
hv/vv(dB)	-NaN	-31.27	-49.12	-45.60	225.
hnjmp(dB)	-2.14	2.09	-0.08	-8.65	13.9
vnjmp(dB)	-2.30	2.48	-0.07	-8.57	14.1



IHOP 2002 (dual-antenna config, modes 1,3,4,7) Data (cal: 49.0,50.0)

	Min	Max	Mean	Std	Varc%
W2002-06-14-15-02-57 - PPMAG4					
IRIG:1,UTC: 15:02:52.11 to 17:39:16.80, Dur: 9384s					
TimeLngth: 9384.69s, TimeInt: 28ms (34.7pps)					
TimeCor=-13.0s, DSPDif(mn,min,mx):28,28,304					
PPS(min,max,std): 25,36,1.67					
Prof: 394 to 326207, NumProf(t/r): 325813/12802					
ProcTime/Recs: 16:59:26-17:05:37/243238-256039					
MxAcQtime: 33ms; DRate: 146.9KB/s; Flags: 0, 0, 0					
Pulse: 275ns, IFilt: 5.0MHz; ppPol: HH HV VV					
TxPol: HHVV, PRF: 20 10 20 10 kHz					
Range: Delay 75m, Spacing 15m, Gates 75					
Ave. Pulses: 84, Rng/Prof Aspect@90m/s: 5.8					
hhN(dB)	-67.31	-64.13	-65.65	-75.71	9.8
vvN(dB)	-68.08	-64.56	-65.91	-75.94	9.9
hhL(dB)	-11.70	-3.82	-9.27	-18.51	11.9
vvL(dB)	-5.27	-1.09	-2.80	-12.33	11.1
ppN(m/s)	-11.90	12.42	-0.00	4.17	
ppT(m/s)	-93.99	98.14	-0.00	32.92	
hh/vv(dB)	-NaN	42.36	9.31	28.53	8347
vh/hh(dB)	-NaN	-29.10	-34.47	-35.63	76.5
hv/vv(dB)	-NaN	-31.27	-49.12	-45.60	225.
hnjmp(dB)	-2.14	2.09	-0.08	-8.65	13.9
vnjmp(dB)	-2.30	2.48	-0.07	-8.57	14.1