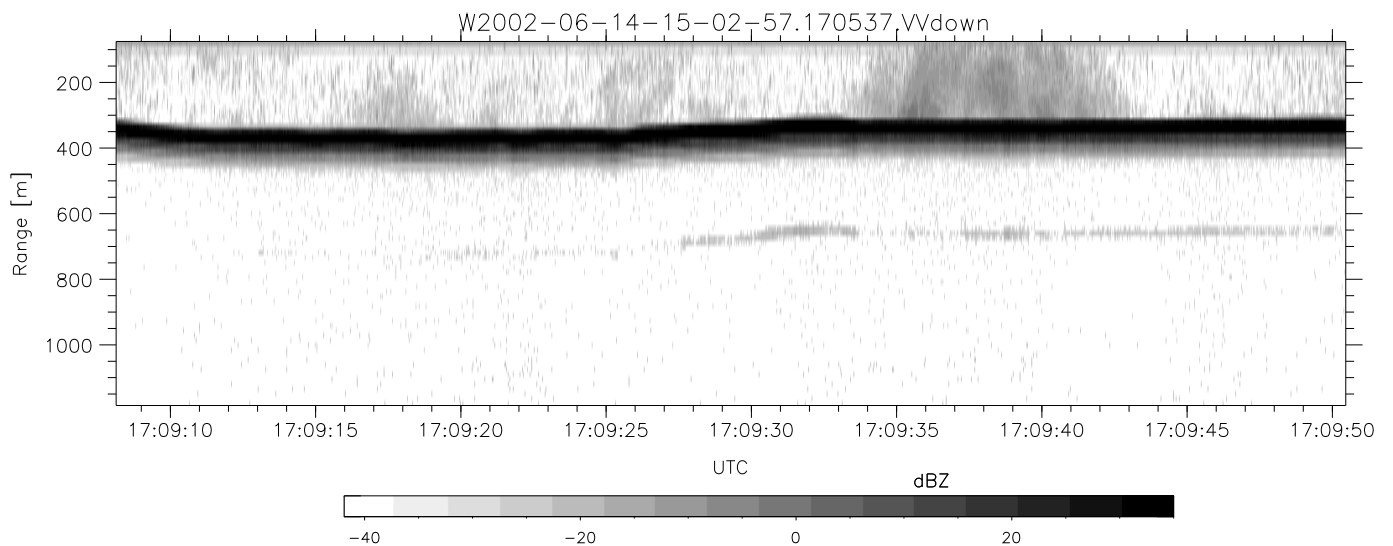
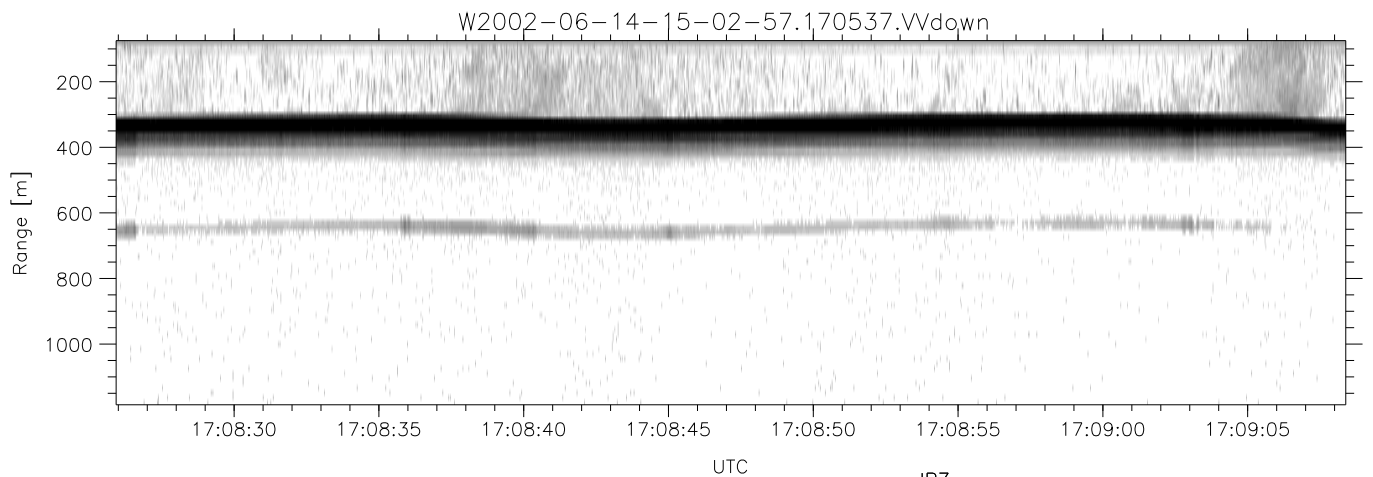
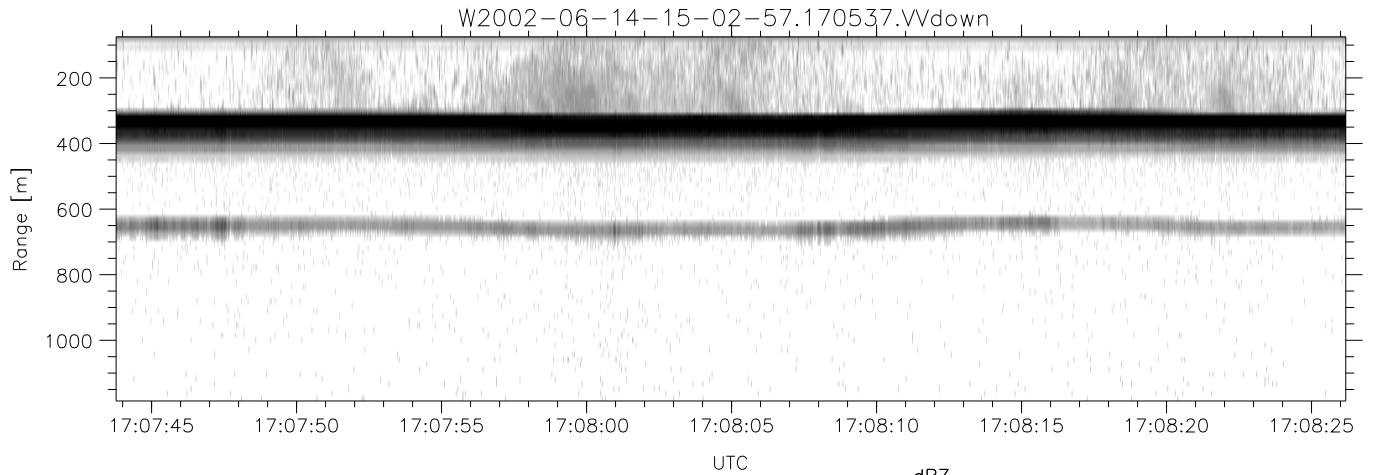


IHOP 2002 (dual-antenna config, modes 1,3,4,7) Data (cal: 49.0,50.0)

W2002-06-14-15-02-57 - PPMAG4  
 IRIG:1,UTC: 15:02:52.11 to 17:39:16.80, Dur: 9384s  
 TimeLngth: 9384.69s, TimeInt: 28ms (34.7pps)  
 TimeCor=-13.0s, DSPDif(mn,min,mx):29,28,246  
 PPS(min,max,std): 27,36,1.81  
 Prof: 394 to 326207, NumProf(t/r): 325813/12802  
 ProcTime/Recs: 17:05:37-17:11:47/256040-268841  
 MxACQtime: 33ms; DRate: 146.9KB/s; Flags: 0, 0, 0  
 Pulse: 275ns, IFilt: 5.0MHz; ppPol: HH HV VV  
 TxPol: HHVV, PRF: 20 10 20 10 kHz  
 Range: Delay 75m, Spacing 15m, Gates 75  
 Ave. Pulses: 84, Rng/Prof Aspect@90m/s: 5.8

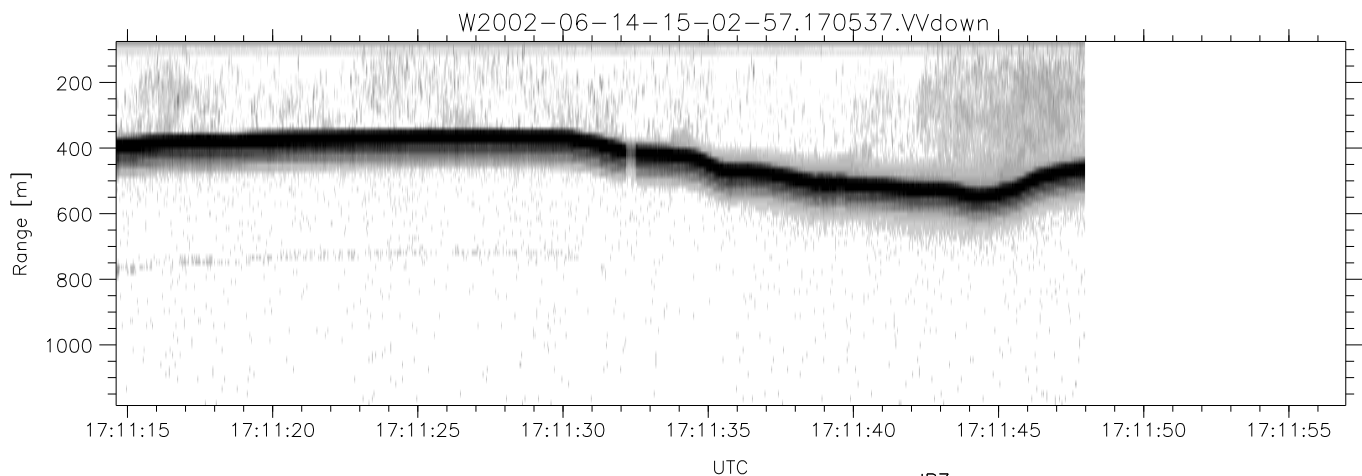
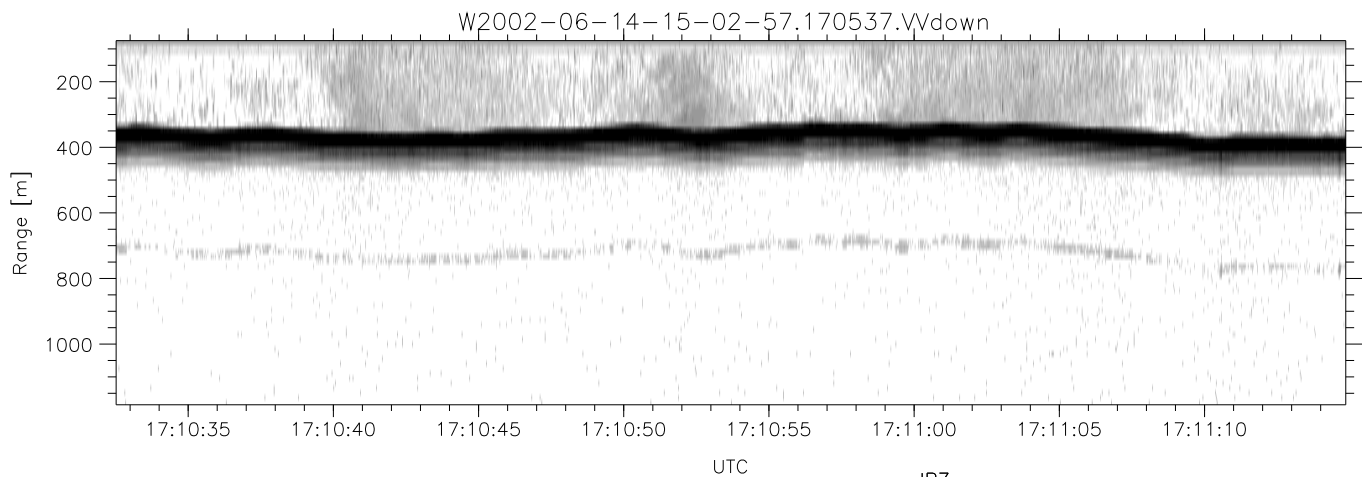
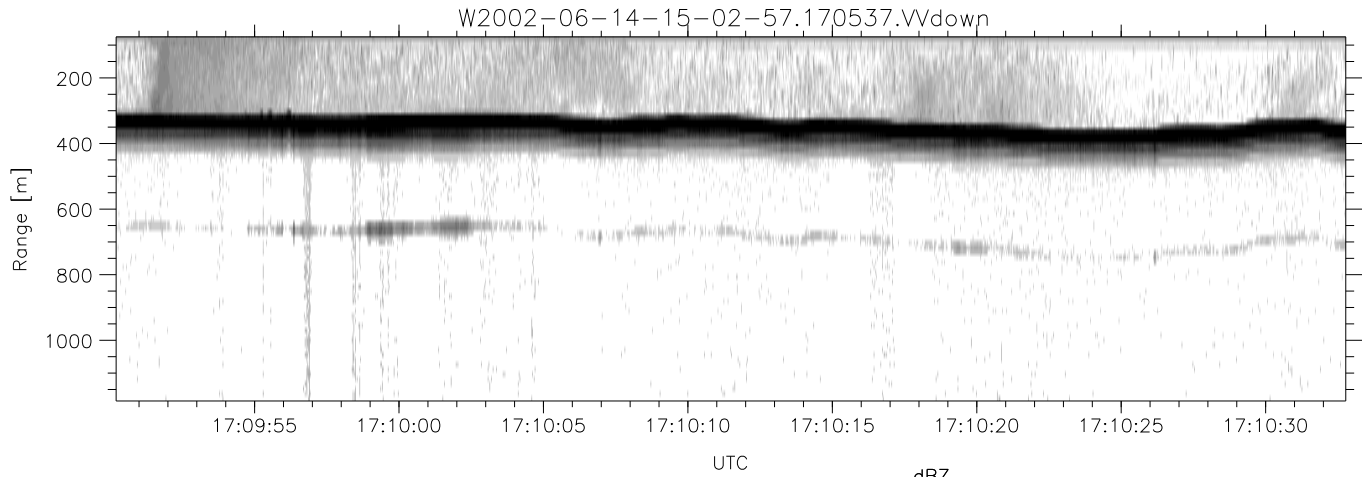
	Min	Max	Mean	Std	Varc%
hhN(dB)	-67.39	-63.75	-65.62	-75.45	10.4
vvN(dB)	-67.63	-63.09	-65.88	-75.52	10.9
hhL(dB)	-11.70	-4.83	-9.19	-17.69	14.1
vvL(dB)	-5.21	-0.85	-2.72	-11.77	12.4
ppN(m/s)	-12.12	12.17	0.13	4.16	
ppT(m/s)	-95.74	96.12	1.04	32.84	
hh/vv(dB)	-NaN	55.77	15.72	34.33	7260
vh/hh(dB)	-NaN	-29.25	-34.89	-34.00	122.
hv/vv(dB)	-NaN	-31.25	-50.71	-46.27	277.
hnjmp(dB)	-2.46	1.88	-0.08	-8.70	13.8
vnjmp(dB)	-2.31	1.86	-0.08	-8.62	14.0



IHOP 2002 (dual-antenna config, modes 1,3,4,7) Data (cal: 49.0,50.0)

W2002-06-14-15-02-57 - PPMAG4  
 IRIG:1,UTC: 15:02:52.11 to 17:39:16.80, Dur: 9384s  
 TimeLngth: 9384.69s, TimeInt: 28ms (34.7pps)  
 TimeCor=-13.0s, DSPDif(mn,min,mx):29,28,246  
 PPS(min,max,std): 27,36,1.81  
 Prof: 394 to 326207, NumProf(t/r): 325813/12802  
 ProcTime/Recs: 17:05:37-17:11:47/256040-268841  
 MxACQtime: 33ms; DRate: 146.9KB/s; Flags: 0, 0, 0  
 Pulse: 275ns, IFfilt: 5.0MHz; ppPol: HH HV VV  
 TxPol: HHVV, PRF: 20 10 20 10 kHz  
 Range: Delay 75m, Spacing 15m, Gates 75  
 Ave. Pulses: 84, Rng/Prof Aspect@90m/s: 5.8

	Min	Max	Mean	Std	Varc%
hhN(dB)	-67.39	-63.75	-65.62	-75.45	10.4
vvN(dB)	-67.63	-63.09	-65.88	-75.52	10.9
hhL(dB)	-11.70	-4.83	-9.19	-17.69	14.1
vvL(dB)	-5.21	-0.85	-2.72	-11.77	12.4
ppN(m/s)	-12.12	12.17	0.13	4.16	
ppT(m/s)	-95.74	96.12	1.04	32.84	
hh/vv(dB)	-NaN	55.77	15.72	34.33	7260
vh/hh(dB)	-NaN	-29.25	-34.89	-34.00	122.
hv/vv(dB)	-NaN	-31.25	-50.71	-46.27	277.
hnjmp(dB)	-2.46	1.88	-0.08	-8.70	13.8
vnjmp(dB)	-2.31	1.86	-0.08	-8.62	14.0



IHOP 2002 (dual-antenna config, modes 1,3,4,7) Data (cal: 49.0,50.0)

W2002-06-14-15-02-57 - PPMAG4  
 IRIG:1,UTC: 15:02:52.11 to 17:39:16.80, Dur: 9384s  
 TimeLngth: 9384.69s, TimeInt: 28ms (34.7pps)  
 TimeCor=-13.0s, DSPDif(mn,min,mx):29,28,246  
 PPS(min,max,std): 27,36,1.81  
 Prof: 394 to 326207, NumProf(t/r): 325813/12802  
 ProcTime/Recs: 17:05:37-17:11:47/256040-268841  
 MxACQtime: 33ms; DRate: 146.9KB/s; Flags: 0, 0, 0  
 Pulse: 275ns, IFfilt: 5.0MHz; ppPol: HH HV VV  
 TxPol: HHVV, PRF: 20 10 20 10 kHz  
 Range: Delay 75m, Spacing 15m, Gates 75  
 Ave. Pulses: 84, Rng/Prof Aspect@90m/s: 5.8

	Min	Max	Mean	Std	Varc%
hhN(dB)	-67.39	-63.75	-65.62	-75.45	10.4
vvN(dB)	-67.63	-63.09	-65.88	-75.52	10.9
hhL(dB)	-11.70	-4.83	-9.19	-17.69	14.1
vvL(dB)	-5.21	-0.85	-2.72	-11.77	12.4
ppN(m/s)	-12.12	12.17	0.13	4.16	
ppT(m/s)	-95.74	96.12	1.04	32.84	
hh/vv(dB)	-NaN	55.77	15.72	34.33	7260
vh/hh(dB)	-NaN	-29.25	-34.89	-34.00	122.
hv/vv(dB)	-NaN	-31.25	-50.71	-46.27	277.
hnjmp(dB)	-2.46	1.88	-0.08	-8.70	13.8
vnjmp(dB)	-2.31	1.86	-0.08	-8.62	14.0