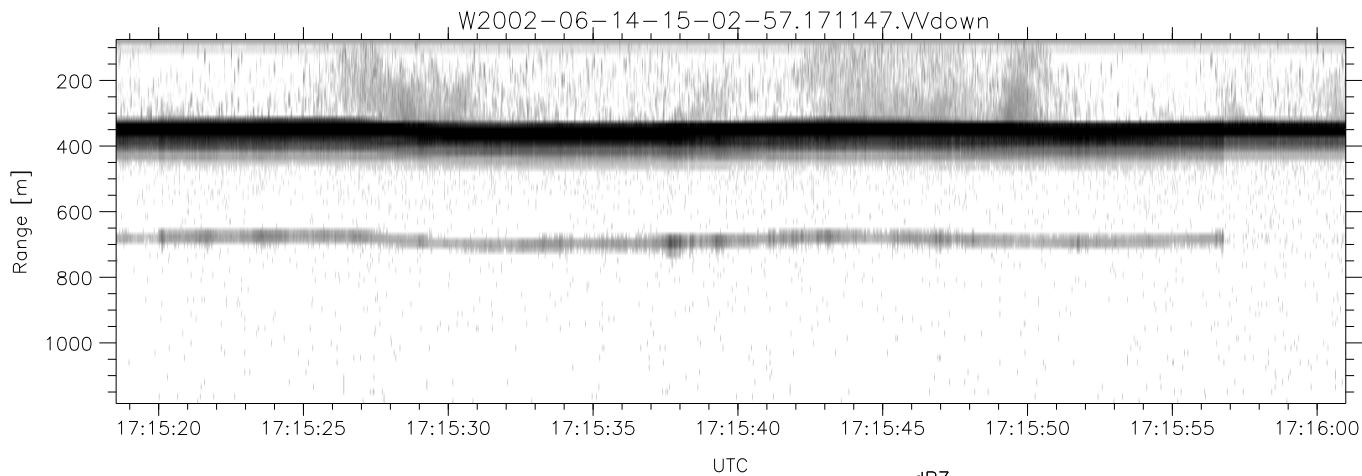
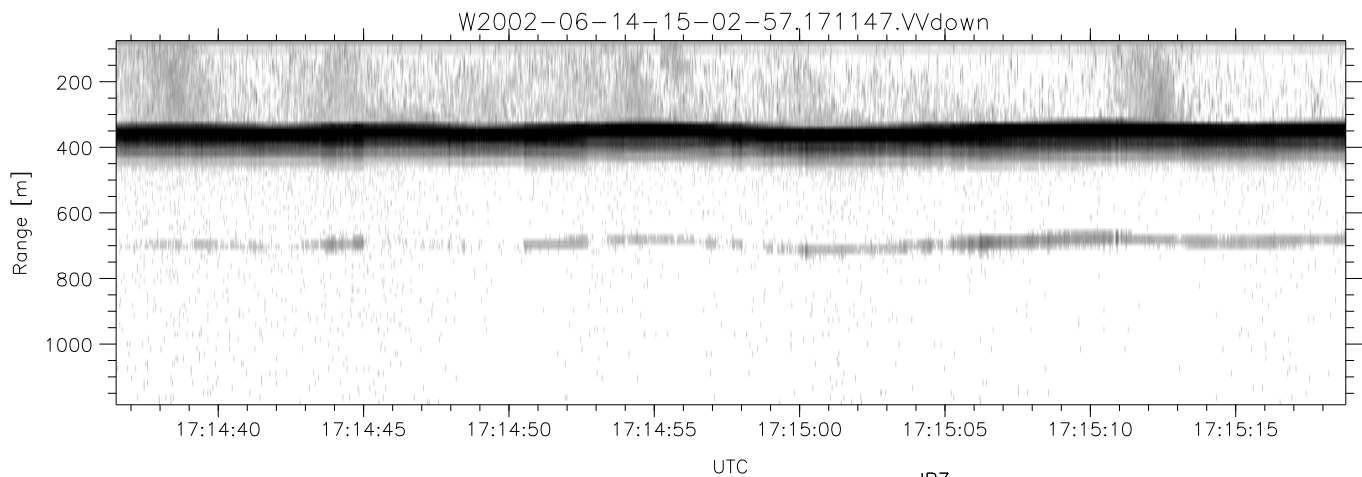
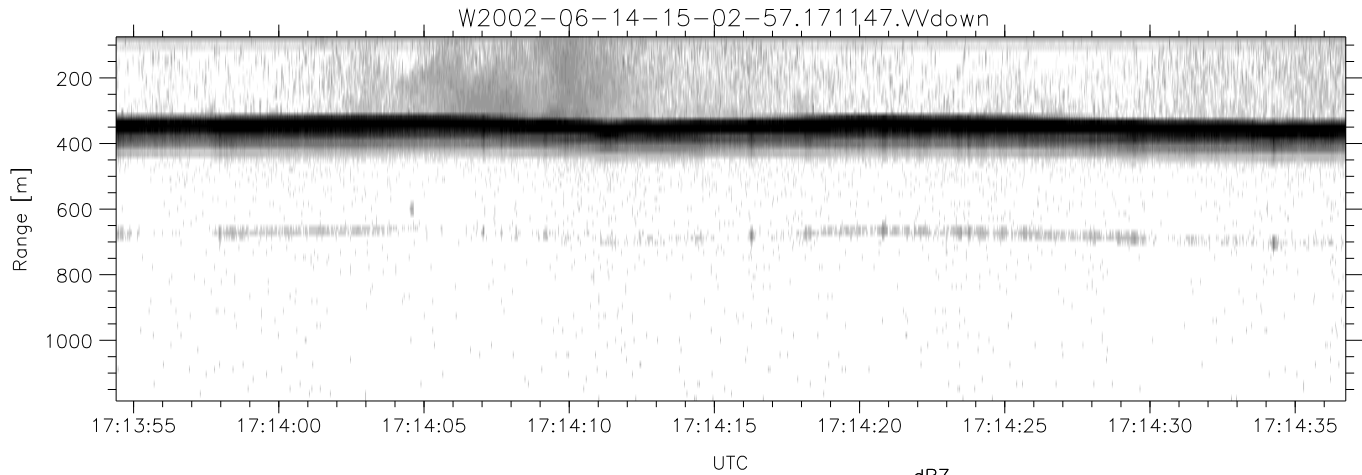


IHOP 2002 (dual-antenna config, modes 1,3,4,7) Data (cal: 49.0,50.0)

W2002-06-14-15-02-57 - PPMAG4
 IRIG:1,UTC: 15:02:52.11 to 17:39:16.80, Dur: 9384s
 TimeLngth: 9384.69s, TimeInt: 28ms (34.7pps)
 TimeCor=-13.0s, DSPDif(mn,min,mx):29,28,300
 PPS(min,max,std): 26,36,1.70
 Prof: 394 to 326207, NumProf(t/r): 325813/12802
 ProcTime/Recs: 17:11:47-17:17:58/268842-281643
 MxACQtime: 33ms; DRate: 146.9KB/s; Flags: 0, 0, 0
 Pulse: 275ns, IFfilt: 5.0MHz; ppPol: HH HV VV
 TxPol: HHVV, PRF: 20 10 20 10 kHz
 Range: Delay 75m, Spacing 15m, Gates 75
 Ave. Pulses: 84, Rng/Prof Aspect@90m/s: 5.8

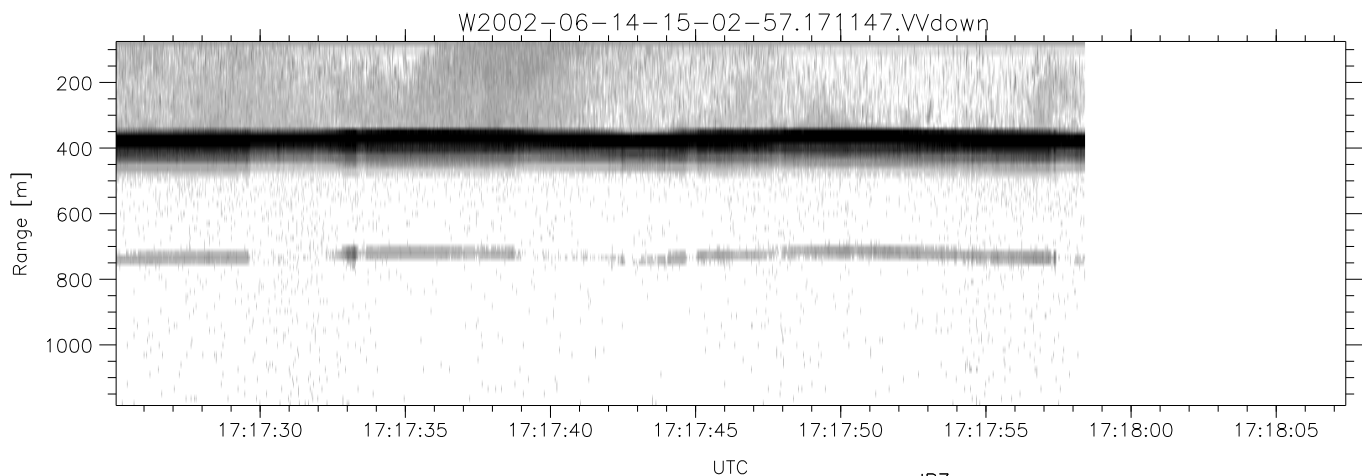
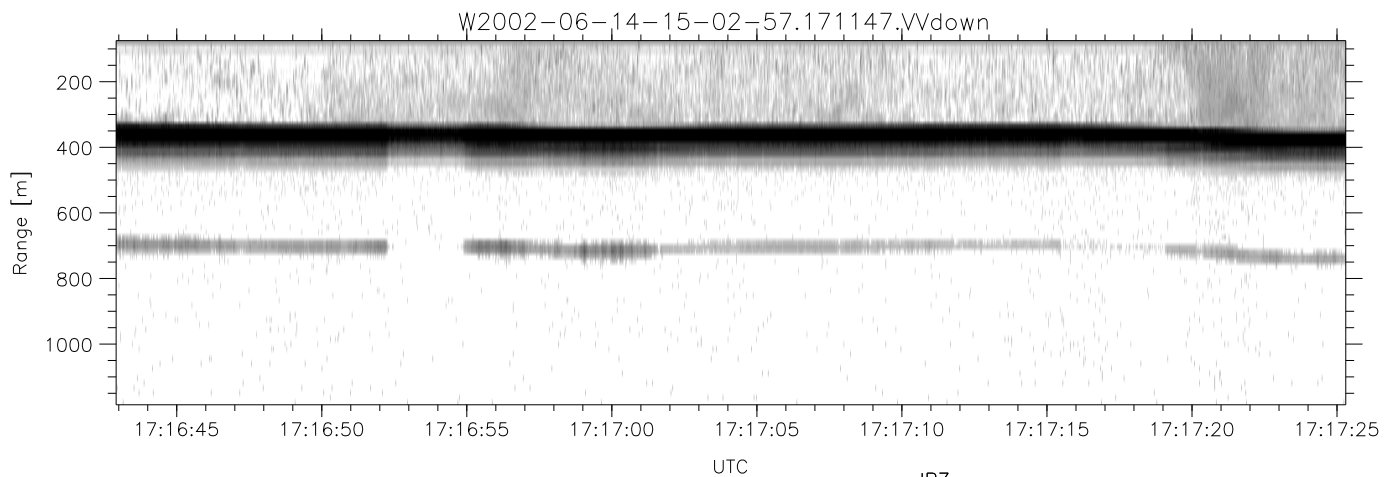
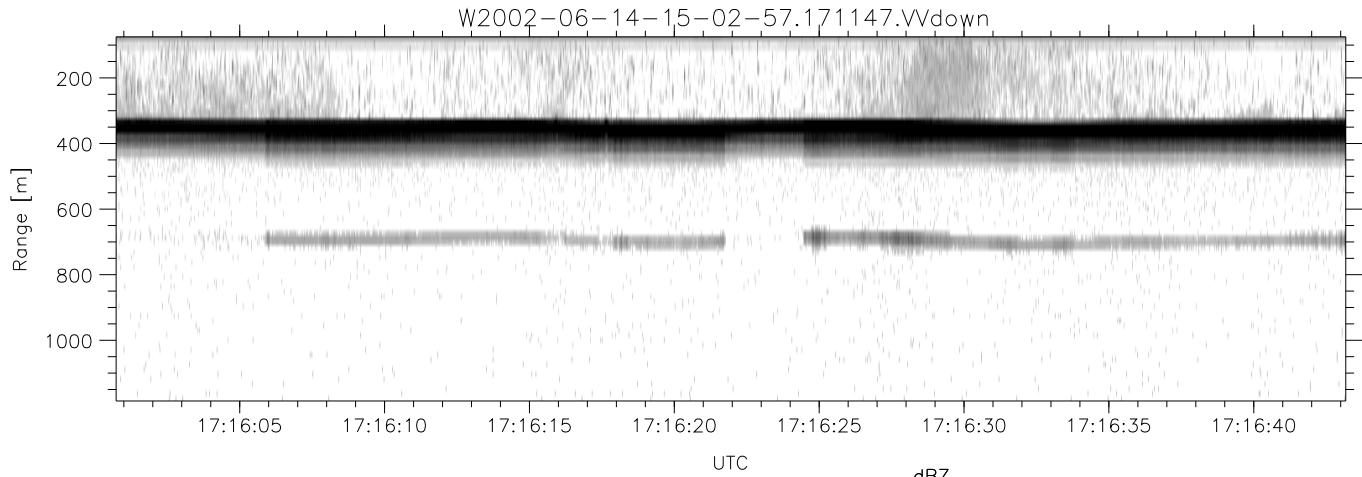
	Min	Max	Mean	Std	Varc%
hhN(dB)	-67.26	-64.11	-65.66	-75.67	10.0
vvN(dB)	-67.67	-62.67	-65.91	-75.66	10.6
hhL(dB)	-11.67	-4.31	-9.02	-17.30	14.9
vvL(dB)	-5.09	-0.80	-2.76	-11.48	13.5
ppN(m/s)	-12.29	12.58	0.11	4.11	
ppT(m/s)	-97.10	99.35	0.88	32.50	
hh/vv(dB)	-NaN	44.35	12.50	24.43	1559
vh/hh(dB)	-NaN	-31.12	-35.90	-36.54	86.3
hv/vv(dB)	-NaN	-30.64	-50.92	-46.04	307.
hnjmp(dB)	-2.44	1.96	-0.07	-8.69	13.7
vnjmp(dB)	-2.54	2.23	-0.07	-8.59	14.0



IHOP 2002 (dual-antenna config, modes 1,3,4,7) Data (cal: 49.0,50.0)

W2002-06-14-15-02-57 - PPMAG4
 IRIG:1,UTC: 15:02:52.11 to 17:39:16.80, Dur: 9384s
 TimeLngth: 9384.69s, TimeInt: 28ms (34.7pps)
 TimeCor=-13.0s, DSPDif(mn,min,mx):29,28,300
 PPS(min,max,std): 26,36,1.70
 Prof: 394 to 326207, NumProf(t/r): 325813/12802
 ProcTime/Recs: 17:11:47-17:17:58/268842-281643
 MxACQtime: 33ms; DRate: 146.9KB/s; Flags: 0, 0, 0
 Pulse: 275ns, IFfilt: 5.0MHz; ppPol: HH HV VV
 TxPol: HHVV, PRF: 20 10 20 10 kHz
 Range: Delay 75m, Spacing 15m, Gates 75
 Ave. Pulses: 84, Rng/Prof Aspect@90m/s: 5.8

	Min	Max	Mean	Std	Varc%
hhN (dB)	-67.26	-64.11	-65.66	-75.67	10.0
vvN (dB)	-67.67	-62.67	-65.91	-75.66	10.6
hhL (dB)	-11.67	-4.31	-9.02	-17.30	14.9
vvL (dB)	-5.09	-0.80	-2.76	-11.48	13.5
ppN (m/s)	-12.29	12.58	0.11	4.11	
ppT (m/s)	-97.10	99.35	0.88	32.50	
hh/vv (dB)	-NaN	44.35	12.50	24.43	1559
vh/hh (dB)	-NaN	-31.12	-35.90	-36.54	86.3
hv/vv (dB)	-NaN	-30.64	-50.92	-46.04	307.
hnjmp (dB)	-2.44	1.96	-0.07	-8.69	13.7
vnjmp (dB)	-2.54	2.23	-0.07	-8.59	14.0



IHOP 2002 (dual-antenna config, modes 1,3,4,7) Data (cal: 49.0,50.0)

W2002-06-14-15-02-57 - PPMAG4
 IRIG:1,UTC: 15:02:52.11 to 17:39:16.80, Dur: 9384s
 TimeLngth: 9384.69s, TimeInt: 28ms (34.7pps)
 TimeCor=-13.0s, DSPDif(mn,min,mx):29,28,300
 PPS(min,max,std): 26,36,1.70
 Prof: 394 to 326207, NumProf(t/r): 325813/12802
 ProcTime/Recs: 17:11:47-17:17:58/268842-281643
 MxACQtime: 33ms; DRate: 146.9KB/s; Flags: 0, 0, 0
 Pulse: 275ns, IFfilt: 5.0MHz; ppPol: HH HV VV
 TxPol: HHVV, PRF: 20 10 20 10 kHz
 Range: Delay 75m, Spacing 15m, Gates 75
 Ave. Pulses: 84, Rng/Prof Aspect@90m/s: 5.8

	Min	Max	Mean	Std	Varc%
hhN(dB)	-67.26	-64.11	-65.66	-75.67	10.0
vvN(dB)	-67.67	-62.67	-65.91	-75.66	10.6
hhL(dB)	-11.67	-4.31	-9.02	-17.30	14.9
vvL(dB)	-5.09	-0.80	-2.76	-11.48	13.5
ppN(m/s)	-12.29	12.58	0.11	4.11	
ppT(m/s)	-97.10	99.35	0.88	32.50	
hh/vv(dB)	-NaN	44.35	12.50	24.43	1559
vh/hh(dB)	-NaN	-31.12	-35.90	-36.54	86.3
hv/vv(dB)	-NaN	-30.64	-50.92	-46.04	307.
hnjmp(dB)	-2.44	1.96	-0.07	-8.69	13.7
vnjmp(dB)	-2.54	2.23	-0.07	-8.59	14.0