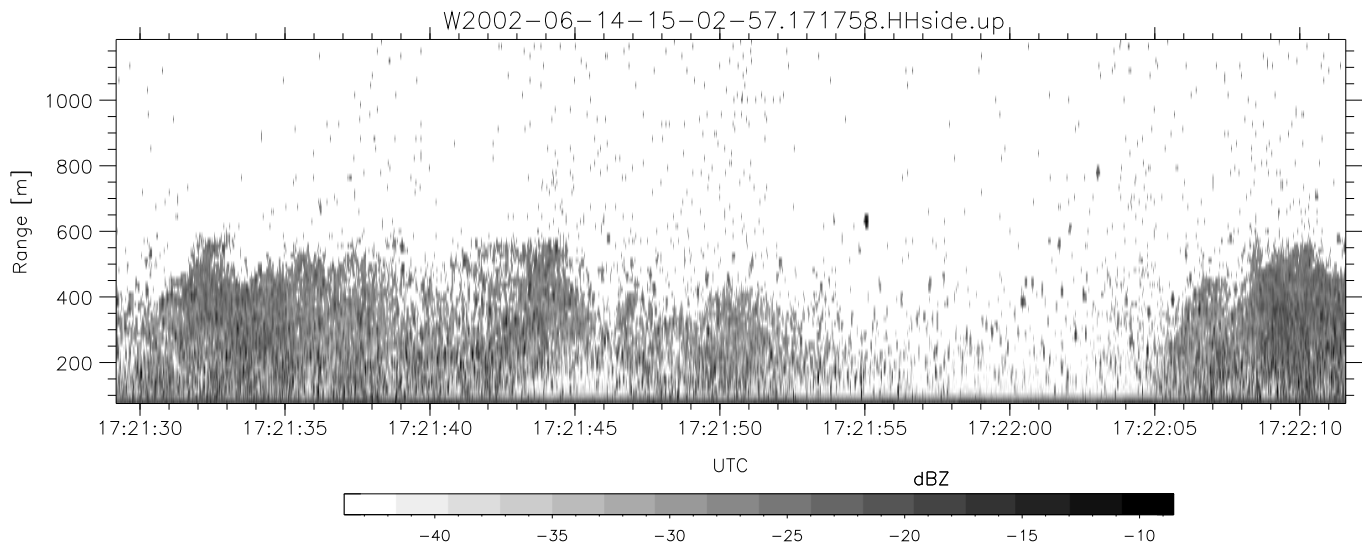
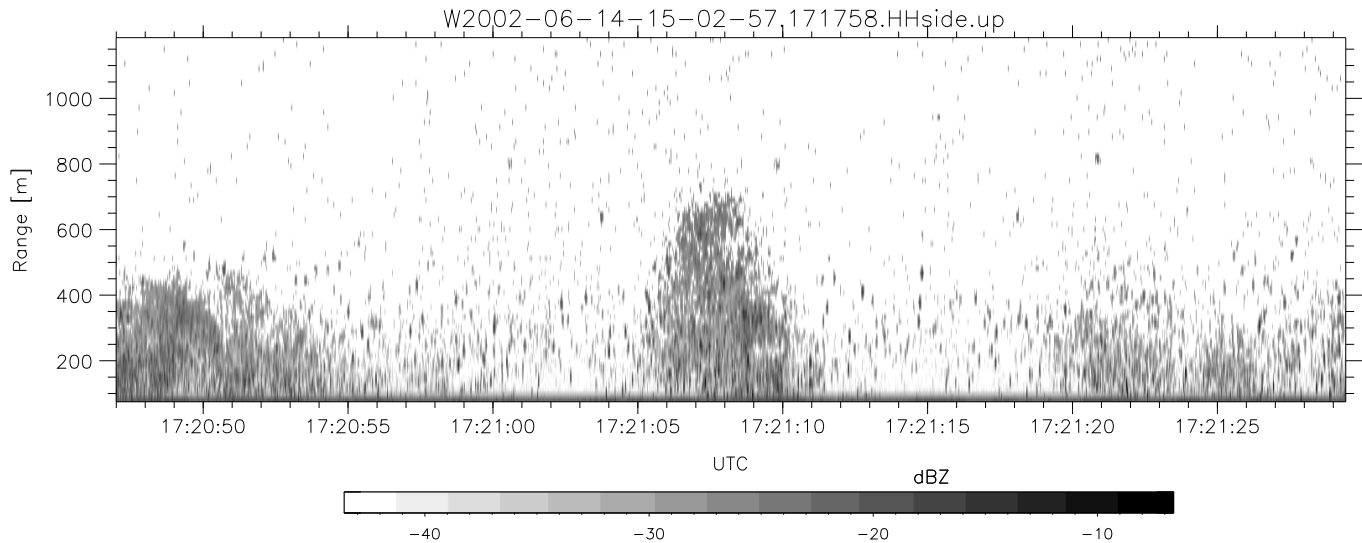
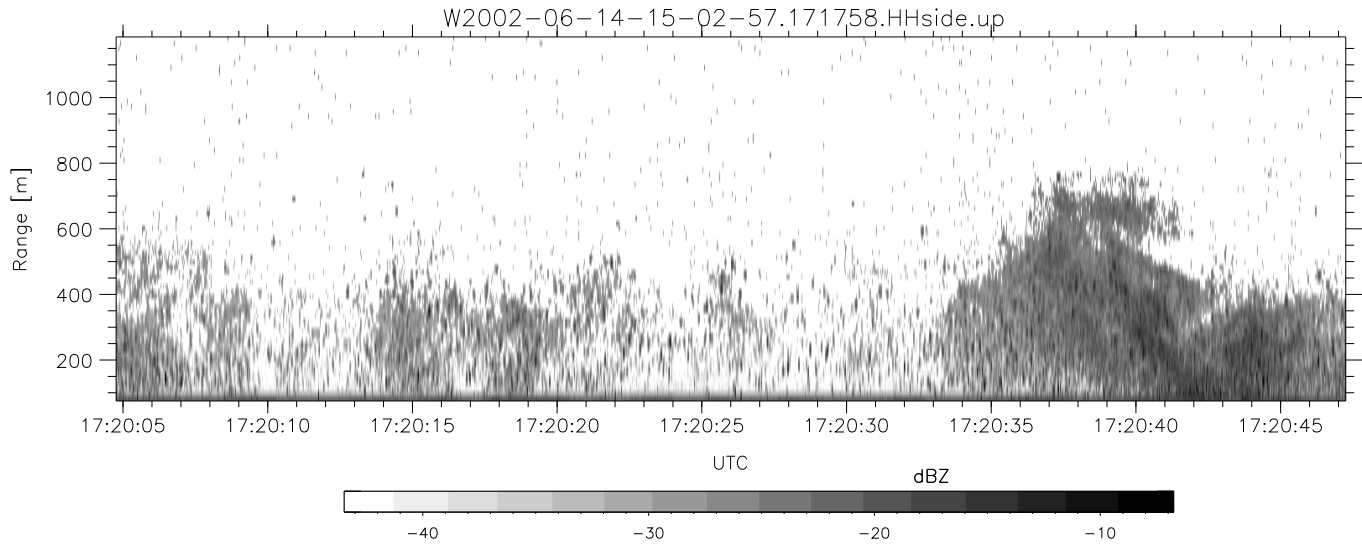


IHOP 2002 (dual-antenna config, modes 1,3,4,7) Data (cal: 49.0,50.0)

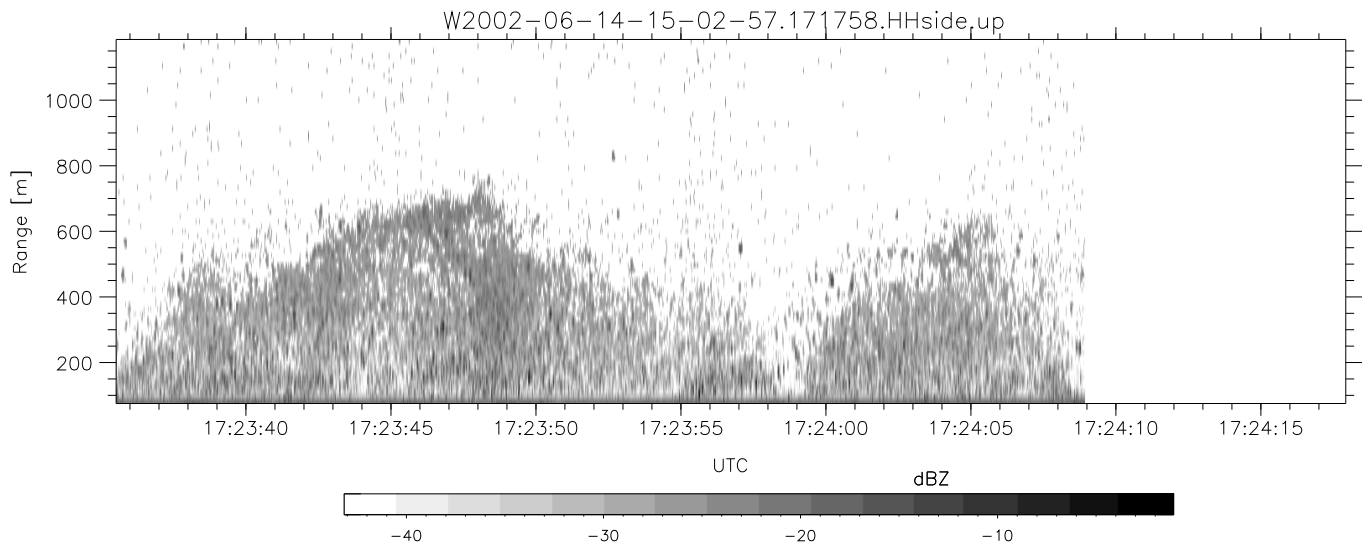
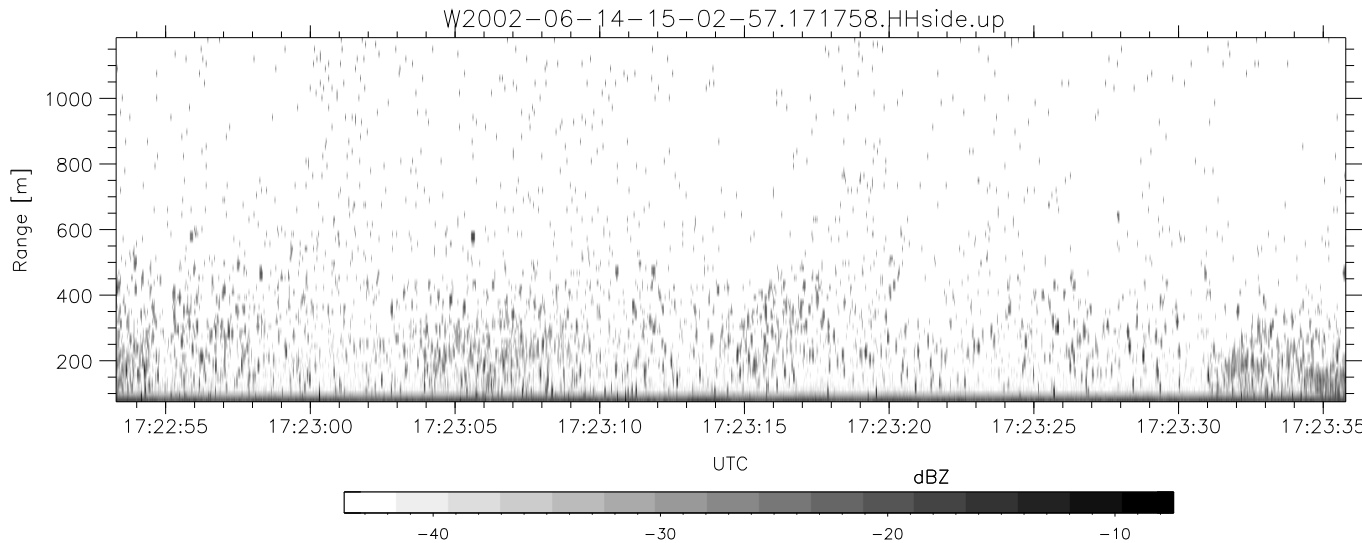
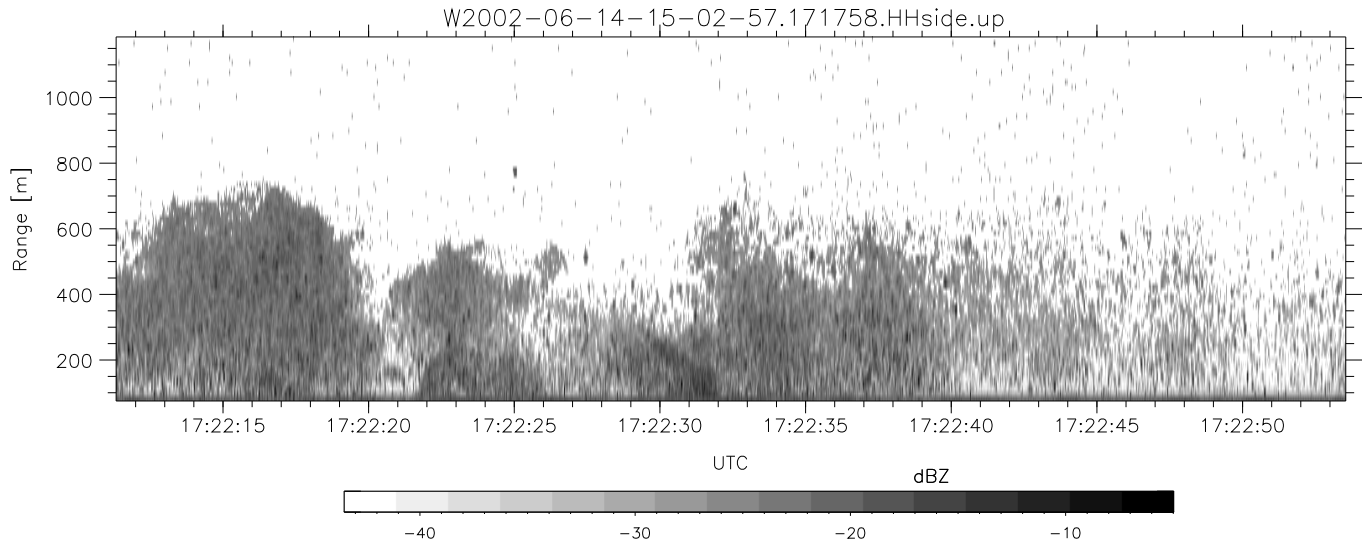
W2002-06-14-15-02-57 - PPMAG4
 IRIG:1,UTC: 15:02:52.11 to 17:39:16.80, Dur: 9384s
 TimeLngth: 9384.69s, TimeInt: 28ms (34.7pps)
 TimeCor=-13.0s, DSPDif(mn,min,mx):29,28,304
 PPS(min,max,std): 26,36,1.71
 Prof: 394 to 326207, NumProf(t/r): 325813/12802
 ProcTime/Recs: 17:17:58-17:24:08/281644-294445
 MxACQtime: 33ms; DRate: 146.9KB/s; Flags: 0, 0, 0
 Pulse: 275ns, IFfilt: 5.0MHz; ppPol: HH HV VV
 TxPol: HHVV, PRF: 20 10 20 10 kHz
 Range: Delay 75m, Spacing 15m, Gates 75
 Ave. Pulses: 84, Rng/Prof Aspect@90m/s: 5.8

	Min	Max	Mean	Std	Varc%
hhN(dB)	-67.39	-64.23	-65.68	-75.77	9.8
vvN(dB)	-67.94	-64.50	-65.91	-75.92	10.0
hhL(dB)	-11.88	-3.17	-9.18	-17.22	15.7
vvL(dB)	-5.11	-0.74	-2.71	-11.34	13.7
ppN(m/s)	-12.31	12.44	0.03	4.15	
ppT(m/s)	-97.28	98.27	0.26	32.82	
hh/vv(dB)	-NaN	41.38	3.00	32.53	8981
vh/hh(dB)	-NaN	-29.03	-35.59	-35.83	94.4
hv/vv(dB)	-NaN	-33.41	-51.37	-46.58	301.
hnjmp(dB)	-2.27	2.04	-0.06	-8.70	13.7
vnjmp(dB)	-2.79	2.15	-0.07	-8.60	14.0



IHOP 2002 (dual-antenna config, modes 1,3,4,7) Data (cal: 49.0,50.0)

W2002-06-14-15-02-57 - PPMAG4	Min	Max	Mean	Std	Varc%
IRIG:1,UTC: 15:02:52.11 to 17:39:16.80, Dur: 9384s	-67.39	-64.23	-65.68	-75.77	9.8
TimeLngth: 9384.69s, TimeInt: 28ms (34.7pps)	-67.94	-64.50	-65.91	-75.92	10.0
TimeCor=-13.0s, DSPDif(mn,min,mx):29,28,304	-11.88	-3.17	-9.18	-17.22	15.7
PPS(min,max,std): 26,36,1.71	-5.11	-0.74	-2.71	-11.34	13.7
Prof: 394 to 326207, NumProf(t/r): 325813/12802	ppN(m/s)	-12.31	12.44	0.03	4.15
ProcTime/Recs: 17:17:58-17:24:08/281644-294445	ppT(m/s)	-97.28	98.27	0.26	32.82
MxAcQtime: 33ms; DRate: 146.9KB/s; Flags: 0, 0, 0	hh/vv(dB)	-NaN	41.38	3.00	32.53 8981
Pulse: 275ns, IFilt: 5.0MHz; ppPol: HH HV VV	vh/hh(dB)	-NaN	-29.03	-35.59	-35.83 94.4
TxPol: HHVV, PRF: 20 10 20 10 kHz	hv/vv(dB)	-NaN	-33.41	-51.37	-46.58 301.
Range: Delay 75m, Spacing 15m, Gates 75	hnjmp(dB)	-2.27	2.04	-0.06	-8.70 13.7
Ave. Pulses: 84, Rng/Prof Aspect@90m/s: 5.8	vnjmp(dB)	-2.79	2.15	-0.07	-8.60 14.0



IHOP 2002 (dual-antenna config, modes 1,3,4,7) Data (cal: 49.0,50.0)

W2002-06-14-15-02-57 - PPMAG4
 IRIG:1,UTC: 15:02:52.11 to 17:39:16.80, Dur: 9384s
 TimeLngth: 9384.69s, TimeInt: 28ms (34.7pps)
 TimeCor=-13.0s, DSPDif(mn,min,mx):29,28,304
 PPS(min,max,std): 26,36,1.71
 Prof: 394 to 326207, NumProf(t/r): 325813/12802
 ProcTime/Recs: 17:17:58-17:24:08/281644-294445
 MxACQtime: 33ms; DRate: 146.9KB/s; Flags: 0, 0, 0
 Pulse: 275ns, IFilt: 5.0MHz; ppPol: HH HV VV
 TxPol: HHVV, PRF: 20 10 20 10 kHz
 Range: Delay 75m, Spacing 15m, Gates 75
 Ave. Pulses: 84, Rng/Prof Aspect@90m/s: 5.8

	Min	Max	Mean	Std	Varc%
hhN(dB)	-67.39	-64.23	-65.68	-75.77	9.8
vvN(dB)	-67.94	-64.50	-65.91	-75.92	10.0
hhL(dB)	-11.88	-3.17	-9.18	-17.22	15.7
vvL(dB)	-5.11	-0.74	-2.71	-11.34	13.7
ppN(m/s)	-12.31	12.44	0.03	4.15	
ppT(m/s)	-97.28	98.27	0.26	32.82	
hh/vv(dB)	-NaN	41.38	3.00	32.53	8981
vh/hh(dB)	-NaN	-29.03	-35.59	-35.83	94.4
hv/vv(dB)	-NaN	-33.41	-51.37	-46.58	301.
hnjmp(dB)	-2.27	2.04	-0.06	-8.70	13.7
vnjmp(dB)	-2.79	2.15	-0.07	-8.60	14.0