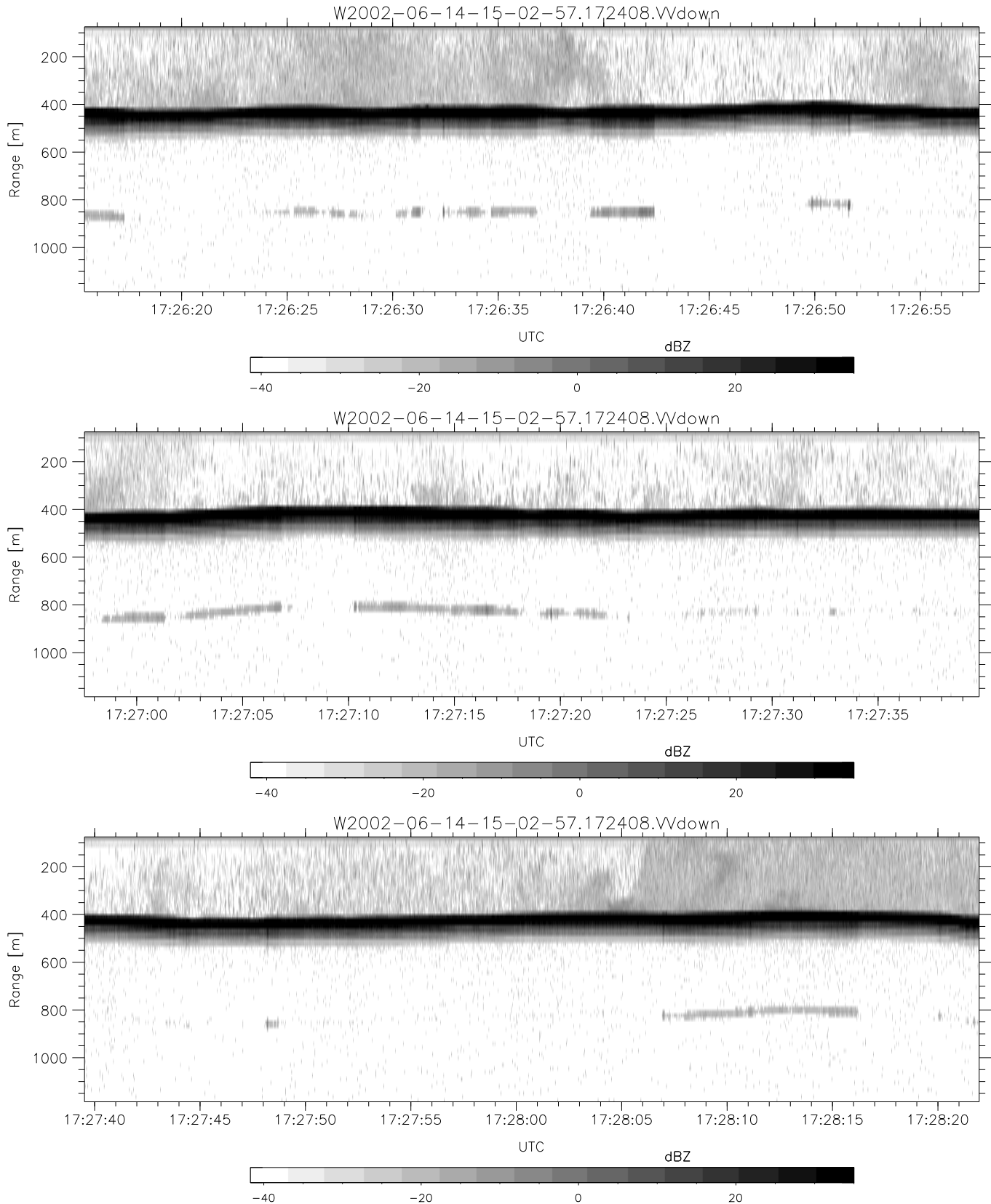


IHOP 2002 (dual-antenna config, modes 1,3,4,7) Data (cal: 49.0,50.0)

W2002-06-14-15-02-57 - PPMAG4
 IRIG:1,UTC: 15:02:52.11 to 17:39:16.80, Dur: 9384s
 TimeLngth: 9384.69s, TimeInt: 28ms (34.7pps)
 TimeCor=-13.0s, DSPDif(mn,min,mx):29,28,244
 PPS(min,max,std): 27,36,1.71
 Prof: 394 to 326207, NumProf(t/r): 325813/12802
 ProcTime/Recs: 17:24:08-17:30:19/294446-307247
 MxACQtime: 33ms; DRate: 146.9KB/s; Flags: 0, 0, 0
 Pulse: 275ns, IFfilt: 5.0MHz; ppPol: HH HV VV
 TxPol: HHVV, PRF: 20 10 20 10 kHz
 Range: Delay 75m, Spacing 15m, Gates 75
 Ave. Pulses: 84, Rng/Prof Aspect@90m/s: 5.8

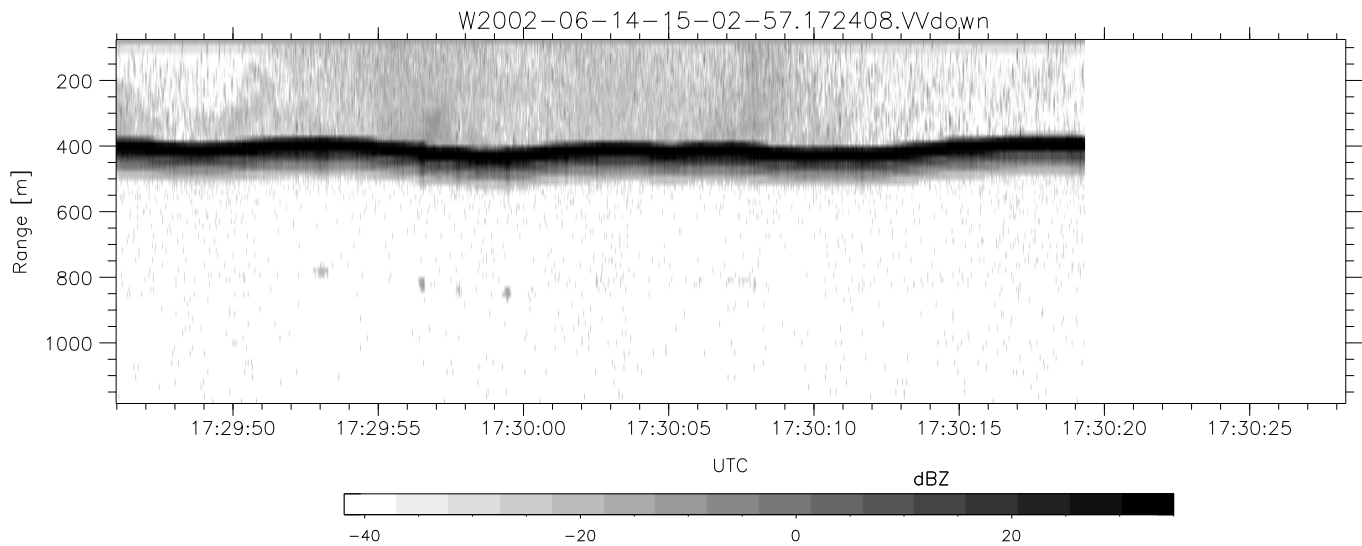
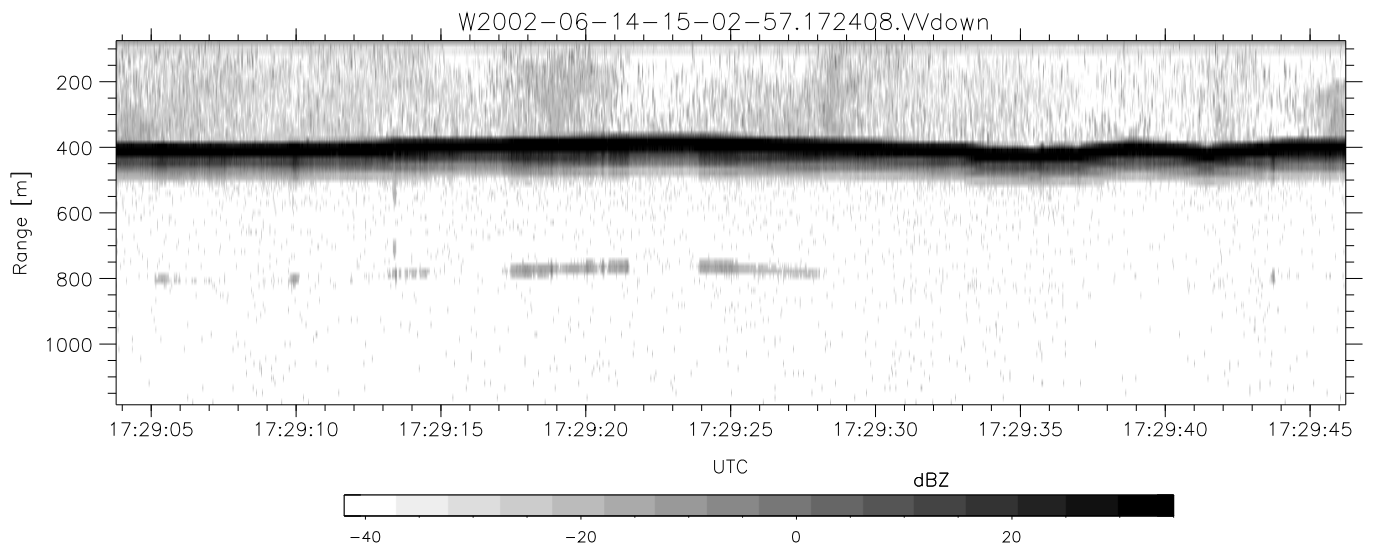
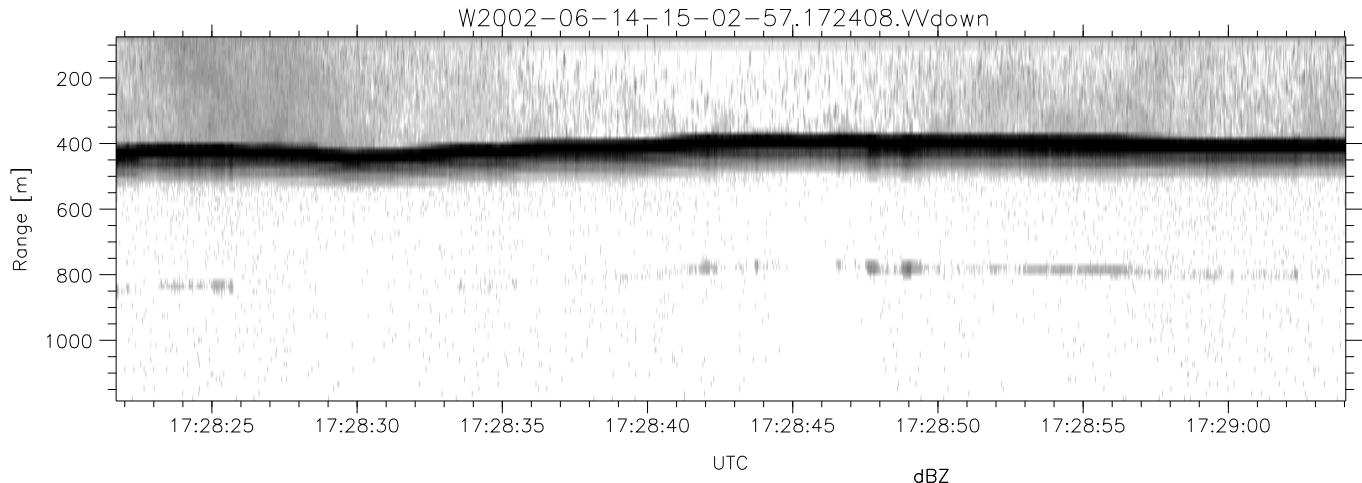
	Min	Max	Mean	Std	Varc%
hhN(dB)	-67.46	-64.21	-65.70	-75.73	9.9
vvN(dB)	-67.79	-63.99	-65.93	-75.91	10.0
hhL(dB)	-11.58	-5.02	-9.16	-17.70	14.0
vvL(dB)	-5.46	-1.10	-2.94	-11.62	13.6
ppN(m/s)	-12.33	12.73	0.10	4.19	
ppT(m/s)	-97.40	100.59	0.79	33.12	
hh/vv(dB)	-NaN	50.21	12.31	31.22	7791
vh/hh(dB)	-NaN	-31.07	-34.85	-35.93	78.0
hv/vv(dB)	-NaN	-32.92	-51.62	-46.42	331.
hnjmp(dB)	-2.42	1.88	-0.07	-8.70	13.7
vnjmp(dB)	-2.17	1.96	-0.08	-8.73	13.6



IHOP 2002 (dual-antenna config, modes 1,3,4,7) Data (cal: 49.0,50.0)

W2002-06-14-15-02-57 - PPMAG4
 IRIG:1,UTC: 15:02:52.11 to 17:39:16.80, Dur: 9384s
 TimeLngth: 9384.69s, TimeInt: 28ms (34.7pps)
 TimeCor=-13.0s, DSPDif(mn,min,mx):29,28,244
 PPS(min,max,std): 27,36,1.71
 Prof: 394 to 326207, NumProf(t/r): 325813/12802
 ProcTime/Recs: 17:24:08-17:30:19/294446-307247
 MxACQtime: 33ms; DRate: 146.9KB/s; Flags: 0, 0, 0
 Pulse: 275ns, IFfilt: 5.0MHz; ppPol: HH HV VV
 TxPol: HHVV, PRF: 20 10 20 10 kHz
 Range: Delay 75m, Spacing 15m, Gates 75
 Ave. Pulses: 84, Rng/Prof Aspect@90m/s: 5.8

	Min	Max	Mean	Std	Varc%
hhN(dB)	-67.46	-64.21	-65.70	-75.73	9.9
vvN(dB)	-67.79	-63.99	-65.93	-75.91	10.0
hhL(dB)	-11.58	-5.02	-9.16	-17.70	14.0
vvL(dB)	-5.46	-1.10	-2.94	-11.62	13.6
ppN(m/s)	-12.33	12.73	0.10	4.19	
ppT(m/s)	-97.40	100.59	0.79	33.12	
hh/vv(dB)	-NaN	50.21	12.31	31.22	7791
vh/hh(dB)	-NaN	-31.07	-34.85	-35.93	78.0
hv/vv(dB)	-NaN	-32.92	-51.62	-46.42	331.
hnjmp(dB)	-2.42	1.88	-0.07	-8.70	13.7
vnjmp(dB)	-2.17	1.96	-0.08	-8.73	13.6



IHOP 2002 (dual-antenna config, modes 1,3,4,7) Data (cal: 49.0,50.0)

W2002-06-14-15-02-57 - PPMAG4
 IRIG:1,UTC: 15:02:52.11 to 17:39:16.80, Dur: 9384s
 TimeLngth: 9384.69s, TimeInt: 28ms (34.7pps)
 TimeCor=-13.0s, DSPDif(mn,min,mx):29,28,244
 PPS(min,max,std): 27,36,1.71
 Prof: 394 to 326207, NumProf(t/r): 325813/12802
 ProcTime/Recs: 17:24:08-17:30:19/294446-307247
 MxACQtime: 33ms; DRate: 146.9KB/s; Flags: 0, 0, 0
 Pulse: 275ns, IFilt: 5.0MHz; ppPol: HH HV VV
 TxPol: HHVV, PRF: 20 10 20 10 kHz
 Range: Delay 75m, Spacing 15m, Gates 75
 Ave. Pulses: 84, Rng/Prof Aspect@90m/s: 5.8

	Min	Max	Mean	Std	Varc%
hhN(dB)	-67.46	-64.21	-65.70	-75.73	9.9
vvN(dB)	-67.79	-63.99	-65.93	-75.91	10.0
hhL(dB)	-11.58	-5.02	-9.16	-17.70	14.0
vvL(dB)	-5.46	-1.10	-2.94	-11.62	13.6
ppN(m/s)	-12.33	12.73	0.10	4.19	
ppT(m/s)	-97.40	100.59	0.79	33.12	
hh/vv(dB)	-NaN	50.21	12.31	31.22	7791
vh/hh(dB)	-NaN	-31.07	-34.85	-35.93	78.0
hv/vv(dB)	-NaN	-32.92	-51.62	-46.42	331.0
hnjmp(dB)	-2.42	1.88	-0.07	-8.70	13.7
vnjmp(dB)	-2.17	1.96	-0.08	-8.73	13.6