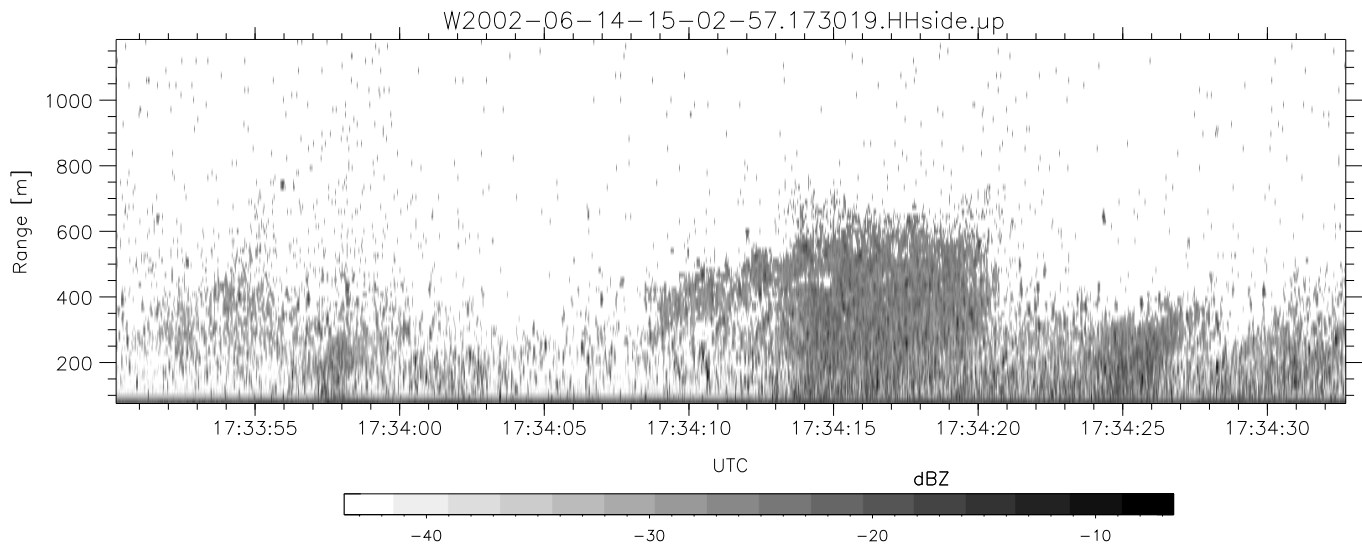
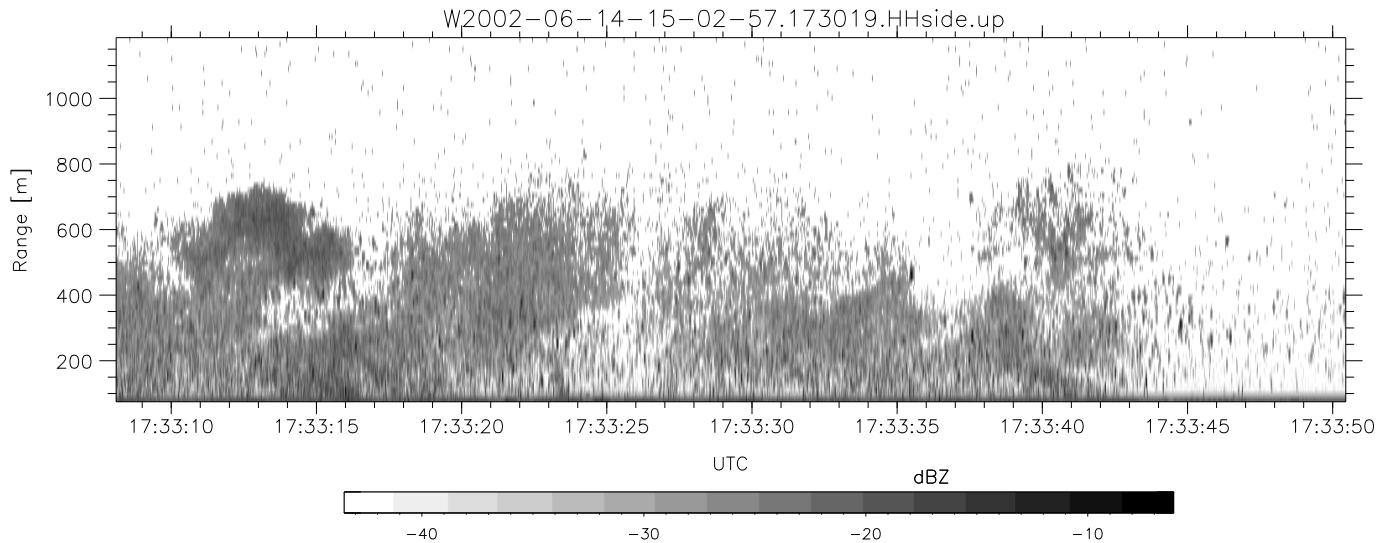
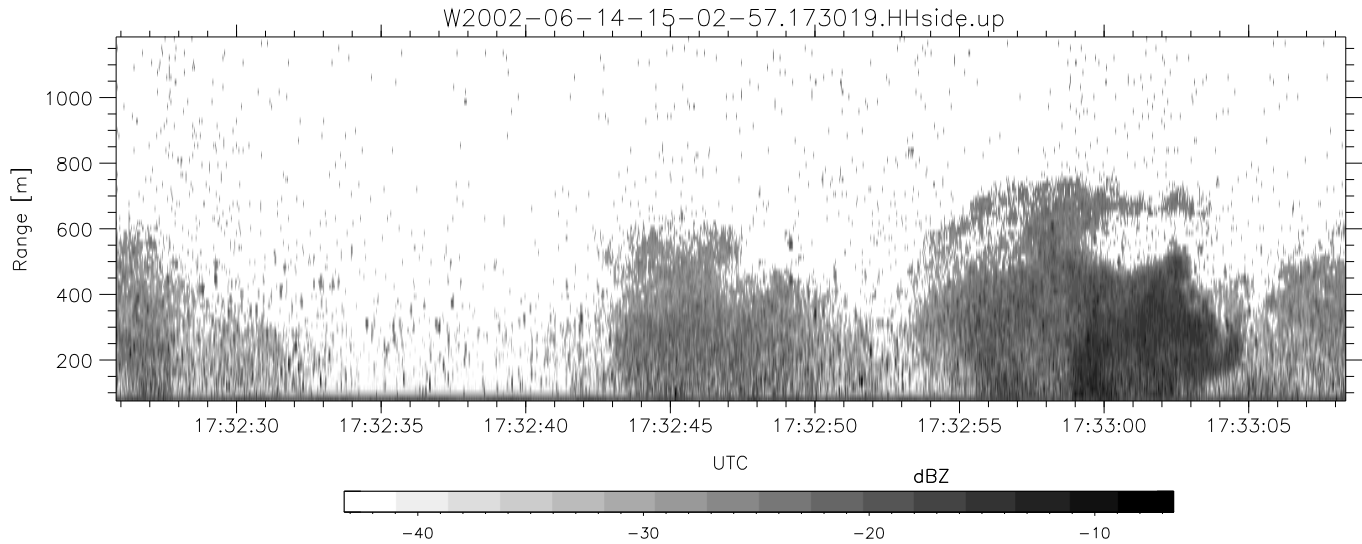


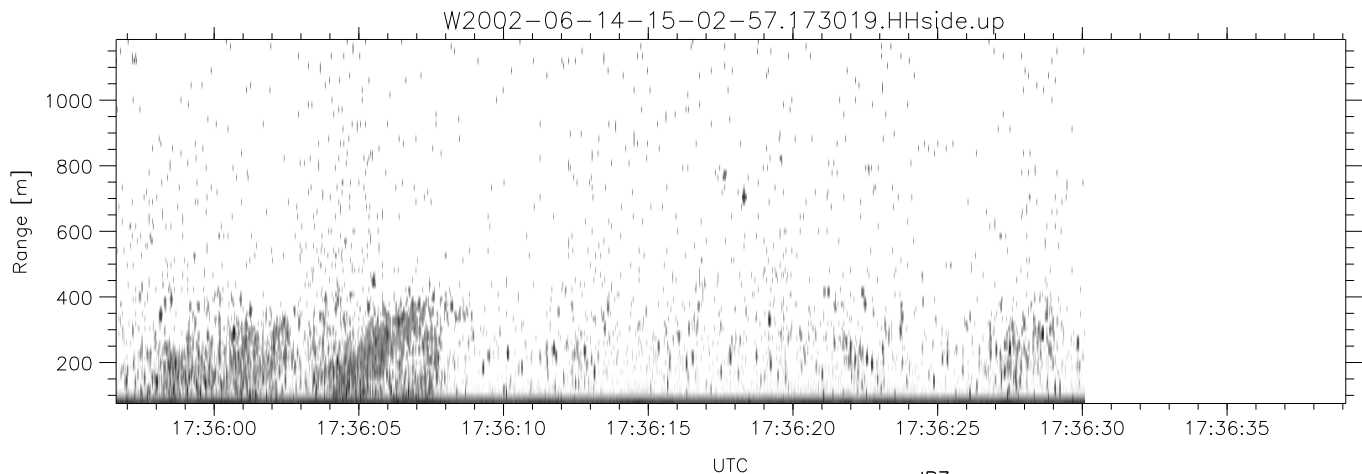
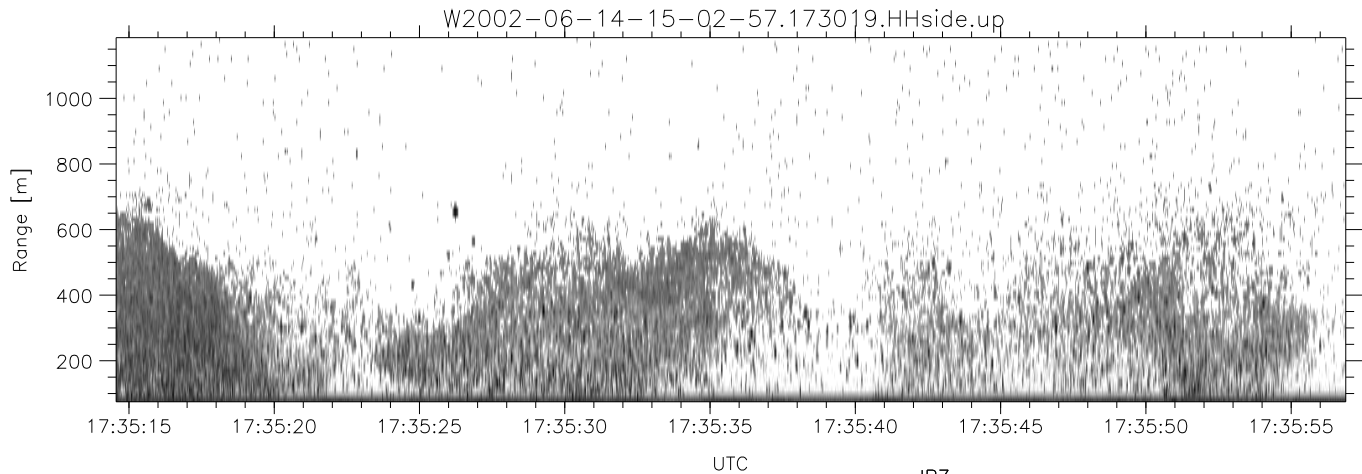
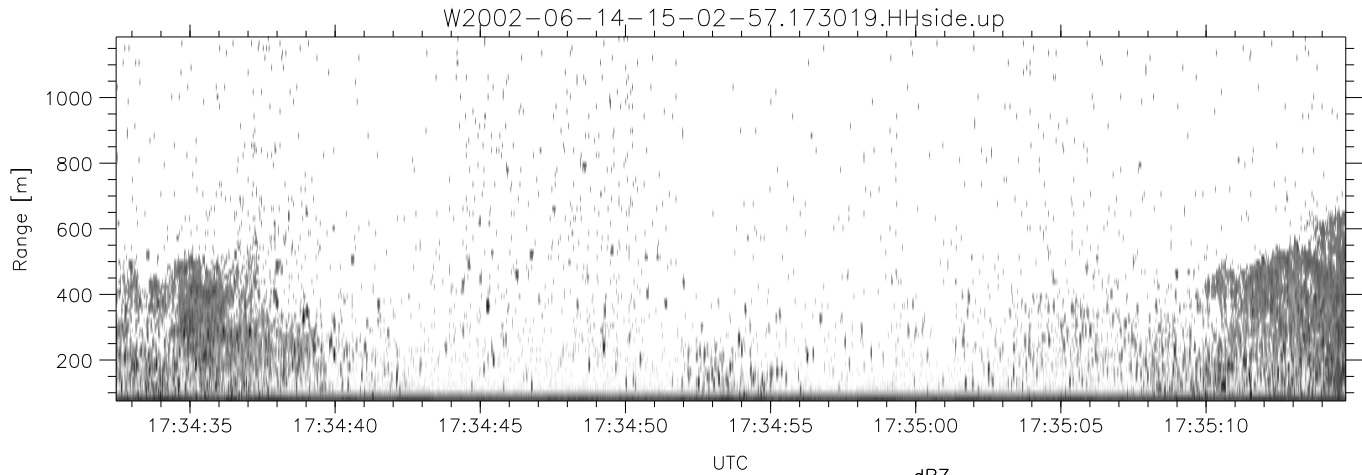
IHOP 2002 (dual-antenna config, modes 1,3,4,7) Data (cal: 49.0,50.0)

W2002-06-14-15-02-57 - PPMAG4	Min	Max	Mean	Std	Varc%	
IRIG:1,UTC: 15:02:52.11 to 17:39:16.80, Dur: 9384s	hhN (dB)	-67.31	-63.97	-65.71	-75.84	9.7
TimeLngth: 9384.69s, TimeInt: 28ms (34.7pps)	vvN (dB)	-67.67	-64.39	-65.95	-75.93	10.0
TimeCor=-13.0s, DSPDif(mn,min,mx):29,28,242	hhL (dB)	-11.71	-3.33	-9.06	-16.59	17.6
PPS(min,max,std): 27,36,1.72	vvL (dB)	-5.64	-0.97	-2.77	-11.06	14.8
Prof: 394 to 326207, NumProf(t/r): 325813/12802	ppN (m/s)	-12.59	12.26	0.03	4.13	
ProcTime/Recs: 17:30:19-17:36:30/307248-320049	ppT (m/s)	-99.44	96.86	0.23	32.63	
MxACQtime: 33ms; DRate: 146.9KB/s; Flags: 0, 0, 0	hh/vv (dB)	-NaN	48.33	10.04	28.06	6341
Pulse: 275ns, IFfilt: 5.0MHz; ppPol: HH HV VV	vh/hh (dB)	-NaN	-31.02	-35.33	-35.72	91.6
TxPol: HHVV, PRF: 20 10 20 10 kHz	hv/vv (dB)	-NaN	-32.50	-51.18	-46.52	292.
Range: Delay 75m, Spacing 15m, Gates 75	hnjmp (dB)	-2.60	2.21	-0.08	-8.74	13.6
Ave. Pulses: 84, Rng/Prof Aspect@90m/s: 5.8	vnjmp (dB)	-2.49	2.13	-0.08	-8.62	14.0



IHOP 2002 (dual-antenna config, modes 1,3,4,7) Data (cal: 49.0,50.0)

	Min	Max	Mean	Std	Varc%
W2002-06-14-15-02-57 - PPMAG4					
IRIG:1,UTC: 15:02:52.11 to 17:39:16.80, Dur: 9384s					
TimeLngth: 9384.69s, TimeInt: 28ms (34.7pps)					
TimeCor=-13.0s, DSPDif(mn,min,mx):29,28,242					
PPS(min,max,std): 27,36,1.72					
Prof: 394 to 326207, NumProf(t/r): 325813/12802					
ProcTime/Recs: 17:30:19-17:36:30/307248-320049					
MxACQtime: 33ms; DRate: 146.9KB/s; Flags: 0, 0, 0					
Pulse: 275ns, IFilt: 5.0MHz; ppPol: HH HV VV					
TxPol: HHVV, PRF: 20 10 20 10 kHz					
Range: Delay 75m, Spacing 15m, Gates 75					
Ave. Pulses: 84, Rng/Prof Aspect@90m/s: 5.8					
hhN(dB)	-67.31	-63.97	-65.71	-75.84	9.7
vvN(dB)	-67.67	-64.39	-65.95	-75.93	10.0
hhL(dB)	-11.71	-3.33	-9.06	-16.59	17.6
vvL(dB)	-5.64	-0.97	-2.77	-11.06	14.8
ppN(m/s)	-12.59	12.26	0.03	4.13	
ppT(m/s)	-99.44	96.86	0.23	32.63	
hh/vv(dB)	-NaN	48.33	10.04	28.06	6341
vh/hh(dB)	-NaN	-31.02	-35.33	-35.72	91.6
hv/vv(dB)	-NaN	-32.50	-51.18	-46.52	292.
hnjmp(dB)	-2.60	2.21	-0.08	-8.74	13.6
vnjmp(dB)	-2.49	2.13	-0.08	-8.62	14.0



IHOP 2002 (dual-antenna config, modes 1,3,4,7) Data (cal: 49.0,50.0)

W2002-06-14-15-02-57 - PPMAG4
 IRIG:1,UTC: 15:02:52.11 to 17:39:16.80, Dur: 9384s
 TimeLngth: 9384.69s, TimeInt: 28ms (34.7pps)
 TimeCor=-13.0s, DSPDif(mn,min,mx):29,28,242
 PPS(min,max,std): 27,36,1.72
 Prof: 394 to 326207, NumProf(t/r): 325813/12802
 ProcTime/Recs: 17:30:19-17:36:30/307248-320049
 MxACQtime: 33ms; DRate: 146.9KB/s; Flags: 0, 0, 0
 Pulse: 275ns, IFfilt: 5.0MHz; ppPol: HH HV VV
 TxPol: HHVV, PRF: 20 10 20 10 kHz
 Range: Delay 75m, Spacing 15m, Gates 75
 Ave. Pulses: 84, Rng/Prof Aspect@90m/s: 5.8

	Min	Max	Mean	Std	Varc%
hhN(dB)	-67.31	-63.97	-65.71	-75.84	9.7
vvN(dB)	-67.67	-64.39	-65.95	-75.93	10.0
hhL(dB)	-11.71	-3.33	-9.06	-16.59	17.6
vvL(dB)	-5.64	-0.97	-2.77	-11.06	14.8
ppN(m/s)	-12.59	12.26	0.03	4.13	
ppT(m/s)	-99.44	96.86	0.23	32.63	
hh/vv(dB)	-NaN	48.33	10.04	28.06	6341
vh/hh(dB)	-NaN	-31.02	-35.33	-35.72	91.6
hv/vv(dB)	-NaN	-32.50	-51.18	-46.52	292.
hnjmp(dB)	-2.60	2.21	-0.08	-8.74	13.6
vnjmp(dB)	-2.49	2.13	-0.08	-8.62	14.0