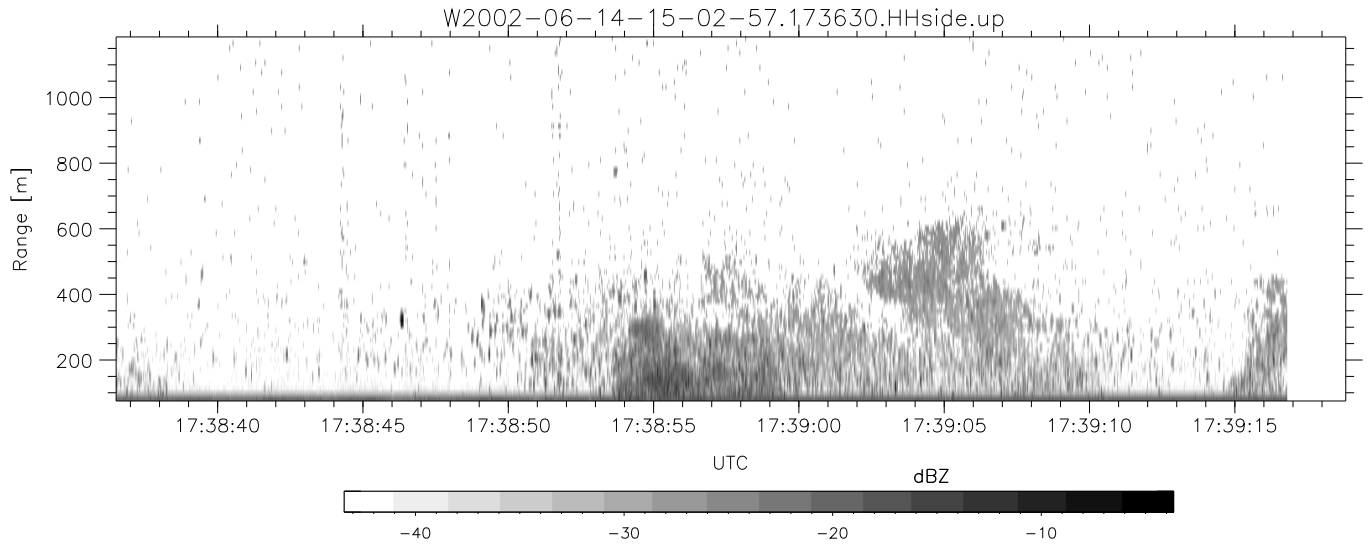


IHOP 2002 (dual-antenna config, modes 1,3,4,7) Data (cal: 49.0,50.0)

W2002-06-14-15-02-57 - PPMAG4	Min	Max	Mean	Std	Varc%	
IRIG:1,UTC: 15:02:52.11 to 17:39:16.80, Dur: 9384s	hhN (dB)	-67.35	-63.84	-65.68	-75.59	10.2
TimeLngth: 9384.69s, TimeInt: 28ms (34.7pps)	vvN (dB)	-67.92	-64.06	-65.93	-75.74	10.5
TimeCor=-13.0s, DSPDif(mn,min,mx):28,28,227	hhL (dB)	-12.03	-5.32	-9.09	-17.35	14.9
PPS(min,max,std): 28,36,1.65	vvL (dB)	-5.46	-0.93	-2.74	-10.94	15.2
Prof: 394 to 326207, NumProf(t/r): 325813/5763	ppN (m/s)	-11.97	12.12	0.21	4.16	
ProcTime/Recs: 17:36:30-17:39:16/320050-325812	ppT (m/s)	-94.56	95.72	1.63	32.84	
MxACQtime: 33ms; DRate: 146.9KB/s; Flags: 0, 0, 0	hh/vv (dB)	-NaN	52.61	14.95	32.38	5539
Pulse: 275ns, IFilt: 5.0MHz; ppPol: HH HV VV	vh/hh (dB)	-38.93	-29.43	-34.52	-35.42	81.3
TxPol: HHVV, PRF: 20 10 20 10 kHz	hv/vv (dB)	-NaN	-33.07	-51.52	-46.47	319.
Range: Delay 75m, Spacing 15m, Gates 75	hnjmp (dB)	-2.22	2.06	-0.07	-8.60	14.0
Ave. Pulses: 84, Rng/Prof Aspect@90m/s: 5.8	vnjmp (dB)	-2.58	2.13	-0.08	-8.65	13.9



IHOP 2002 (dual-antenna config, modes 1,3,4,7) Data (cal: 49.0,50.0)

W2002-06-14-15-02-57 - PPMAG4						
IRIG:1,UTC: 15:02:52.11 to 17:39:16.80, Dur: 9384s	hhN (dB)	Min	Max	Mean	Std	Varc%
TimeLngth: 9384.69s, TimeInt: 28ms (34.7pps)	vvN (dB)	-67.35	-63.84	-65.68	-75.59	10.2
TimeCor=-13.0s, DSPDif(mn,min,mx):28,28,227	hhL (dB)	-67.92	-64.06	-65.93	-75.74	10.5
PPS(min,max,std): 28,36,1.65	vvL (dB)	-12.03	-5.32	-9.09	-17.35	14.9
Prof: 394 to 326207, NumProf(t/r): 325813/5763	ppN (m/s)	-5.46	-0.93	-2.74	-10.94	15.2
ProcTime/Recs: 17:36:30-17:39:16/320050-325812	ppT (m/s)	-11.97	12.12	0.21	4.16	
MxACQtime: 33ms; DRate: 146.9KB/s; Flags: 0, 0, 0	hh/vv (dB)	-94.56	95.72	1.63	32.84	
Pulse: 275ns, IFfilt: 5.0MHz; ppPol: HH HV VV	vh/vh (dB)	-NaN	52.61	14.95	32.38	5539
TxPol: HHVV, PRF: 20 10 20 10 kHz	hv/hv (dB)	-38.93	-29.43	-34.52	-35.42	81.3
Range: Delay 75m, Spacing 15m, Gates 75	hn/hn (dB)	-NaN	-33.07	-51.52	-46.47	319.
Ave. Pulses: 84, Rng/Prof Aspect@90m/s: 5.8	hn/vv (dB)	-2.22	2.06	-0.07	-8.60	14.0
	vn/vn (dB)	-2.58	2.13	-0.08	-8.65	13.9