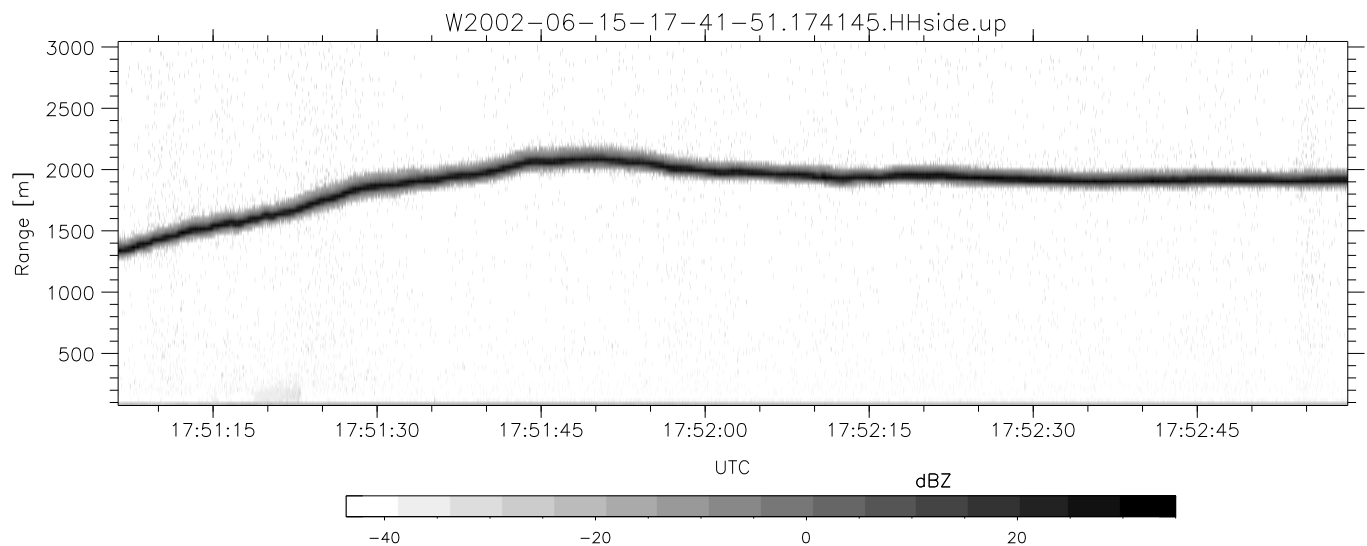
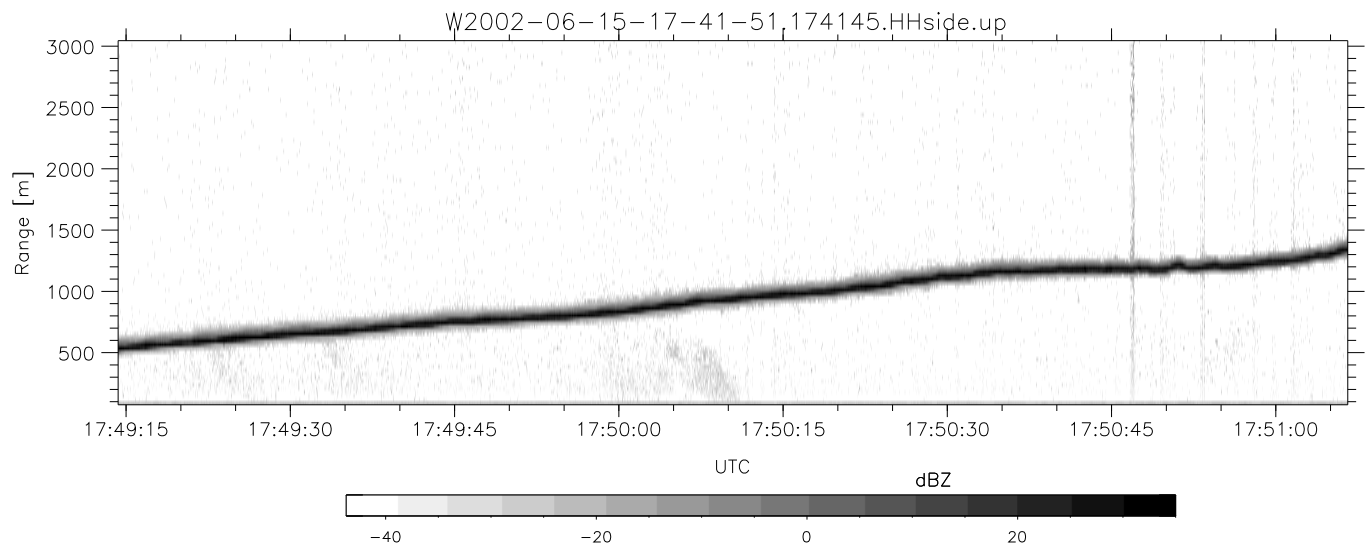
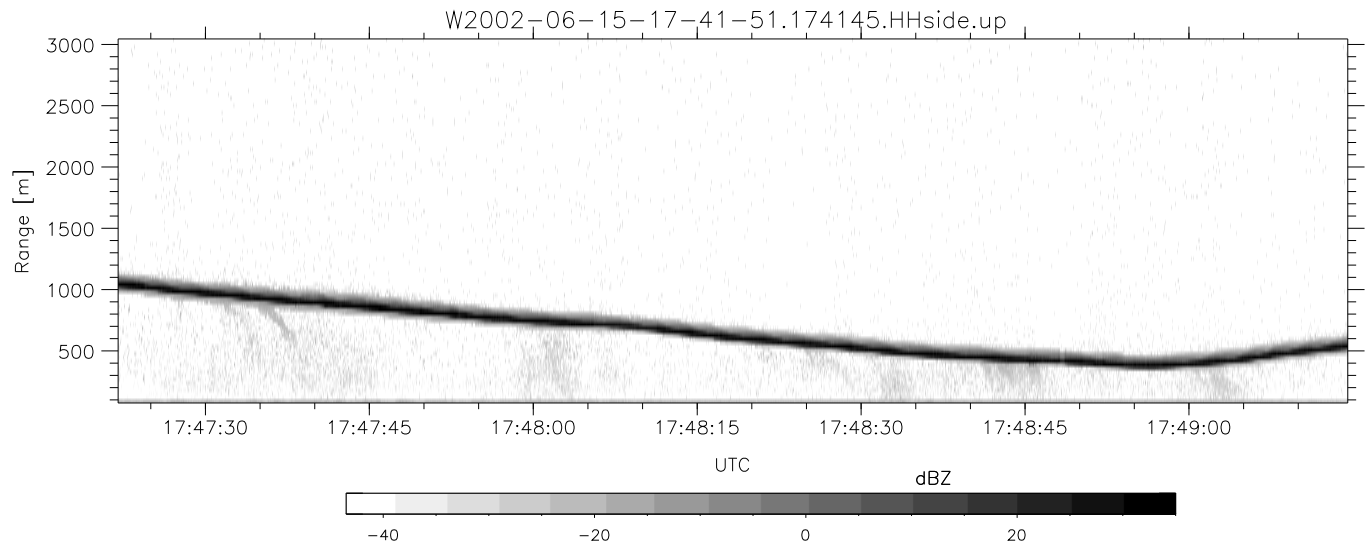


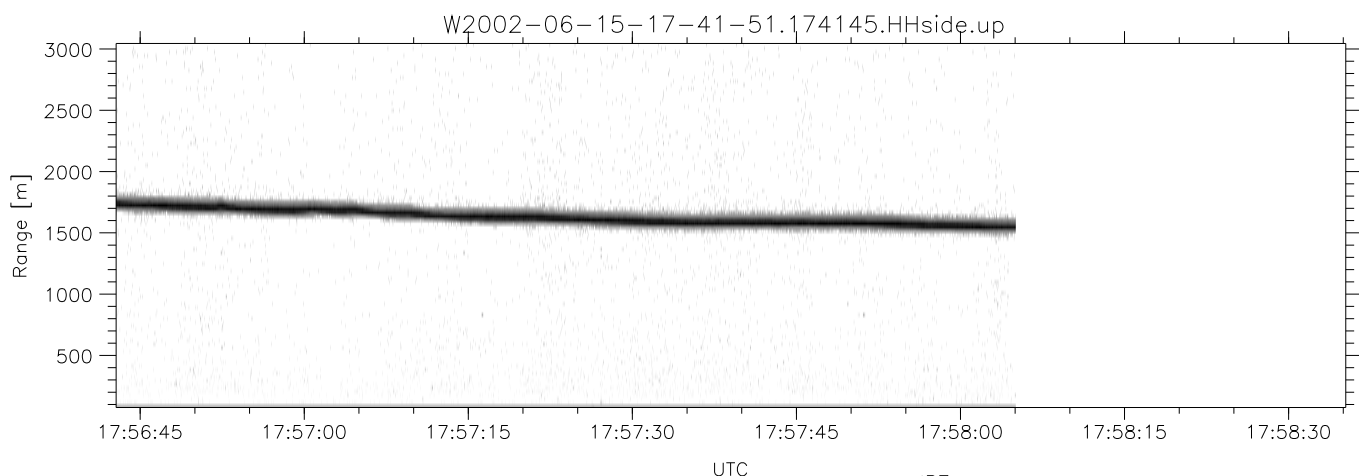
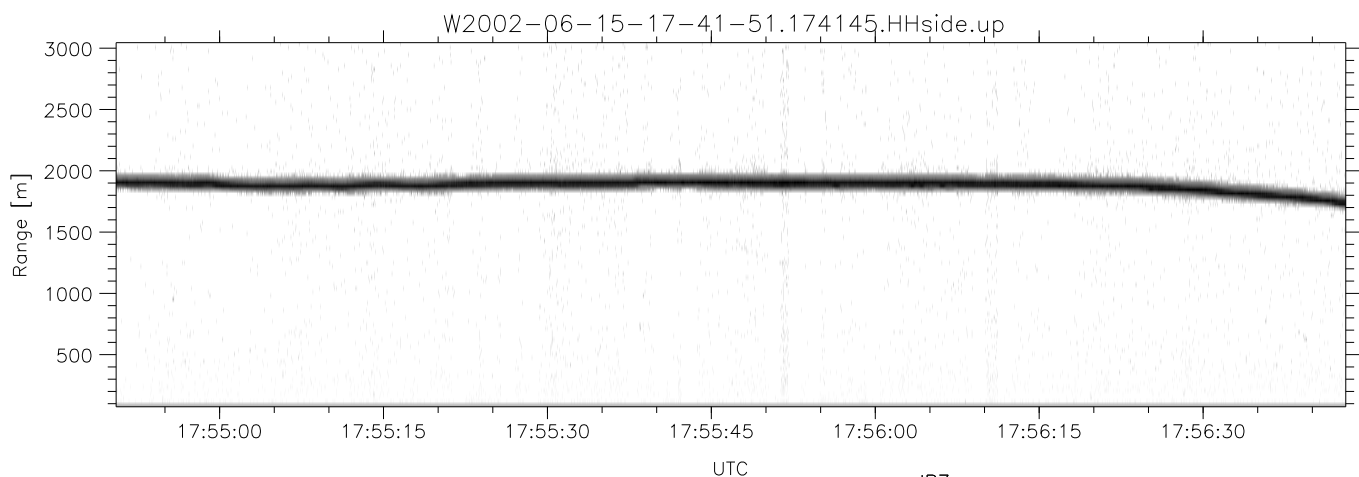
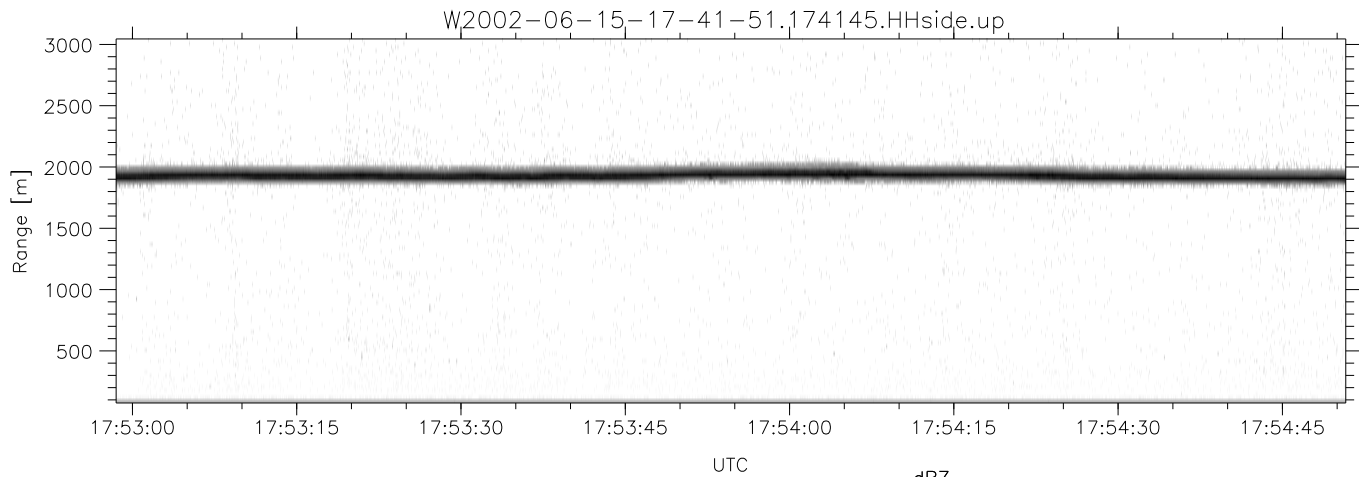
IHOP 2002 (dual-antenna config, modes 1,3,4,7) Data (cal: 49.0,50.0)

W2002-06-15-17-41-51 - PPMAG4	Min	Max	Mean	Std	Varc%	
IRIG:1,UTC: 17:41:45.67 to 18:35:04.23, Dur: 3199s	hhN(dB)	-67.10	-63.06	-65.18	-75.05	10.3
TimeLngth: 3198.56s, TimeInt: 28ms (34.8pps)	vvN(dB)	-67.42	-63.08	-65.67	-75.16	11.2
TimeCor=-13.0s, DSPDif(mn,min,mx):28,28,317	hhL(dB)	-16.51	-0.36	-5.31	-7.78	56.6
PPS(min,max,std): 22,36,2.20	vvL(dB)	-20.78	1.86	-4.51	-4.69	96.0
Prof: 505 to 111835, NumProf(t/r): 111330/34138	ppN(m/s)	-12.63	12.42	0.12	4.17	
ProcTime/Recs: 17:41:45-17:58:05/0-34137	ppT(m/s)	-99.77	98.15	0.96	32.96	
MxAcQtime: 33ms; DRate: 194.8KB/s; Flags: 0, 0, 0	hh/vv(dB)	-NaN	93.39	-NaN	77.04	-533
Pulse: 275ns, IFfilt: 5.0MHz; ppPol: HH HV VV	vh/hh(dB)	-NaN	3.15	-36.61	-18.98	5796
TxPol: HHVV, PRF: 20 10 20 10 kHz	hv/vv(dB)	-NaN	-18.68	-43.81	-36.10	590.
Range: Delay 75m, Spacing 30m, Gates 100	hnjmp(dB)	-2.46	2.27	0.16	-8.46	13.7
Ave. Pulses: 84, Rng/Prof Aspect@90m/s: 11.6	vnjmp(dB)	-2.43	2.26	0.17	-8.38	14.0



IHOP 2002 (dual-antenna config, modes 1,3,4,7) Data (cal: 49.0,50.0)

W2002-06-15-17-41-51 - PPMAG4	Min	Max	Mean	Std	Varc%	
IRIG:1,UTC: 17:41:45.67 to 18:35:04.23, Dur: 3199s	hhN(dB)	-67.10	-63.06	-65.18	-75.05	10.3
TimeLngth: 3198.56s, TimeInt: 28ms (34.8pps)	vvN(dB)	-67.42	-63.08	-65.67	-75.16	11.2
TimeCor=-13.0s, DSPDif(mn,min,mx):28,28,317	hhL(dB)	-16.51	-0.36	-5.31	-7.78	56.6
PPS(min,max,std): 22,36,2.20	vvL(dB)	-20.78	1.86	-4.51	-4.69	96.0
Prof: 505 to 111835, NumProf(t/r): 111330/34138	ppN(m/s)	-12.63	12.42	0.12	4.17	
ProcTime/Recs: 17:41:45-17:58:05/0-34137	ppT(m/s)	-99.77	98.15	0.96	32.96	
MxACQtime: 33ms; DRate: 194.8KB/s; Flags: 0, 0, 0	hh/vv(dB)	-NaN	93.39	-NaN	77.04	-533
Pulse: 275ns, IFilt: 5.0MHz; ppPol: HH HV VV	vh/hh(dB)	-NaN	3.15	-36.61	-18.98	5796
TxPol: HHVV, PRF: 20 10 20 10 kHz	hv/vv(dB)	-NaN	-18.68	-43.81	-36.10	590.
Range: Delay 75m, Spacing 30m, Gates 100	hn/jmp(dB)	-2.46	2.27	0.16	-8.46	13.7
Ave. Pulses: 84, Rng/Prof Aspect@90m/s: 11.6	vn/jmp(dB)	-2.43	2.26	0.17	-8.38	14.0



IHOP 2002 (dual-antenna config, modes 1,3,4,7) Data (cal: 49.0,50.0)

W2002-06-15-17-41-51 - PPMAG4
 IRIG:1,UTC: 17:41:45.67 to 18:35:04.23, Dur: 3199s
 TimeLngth: 3198.56s, TimeInt: 28ms (34.8pps)
 TimeCor=-13.0s, DSPDif(mn,min,mx):28,28,317
 PPS(min,max,std): 22,36,2.20
 Prof: 505 to 111835, NumProf(t/r): 111330/34138
 ProcTime/Recs: 17:41:45-17:58:05/0-34137
 MxACQtime: 33ms; DRate: 194.8KB/s; Flags: 0, 0, 0
 Pulse: 275ns, IFfilt: 5.0MHz; ppPol: HH HV VV
 TxPol: HHVV, PRF: 20 10 20 10 kHz
 Range: Delay 75m, Spacing 30m, Gates 100
 Ave. Pulses: 84, Rng/Prof Aspect@90m/s: 11.6

	Min	Max	Mean	Std	Varc%
hhN(dB)	-67.10	-63.06	-65.18	-75.05	10.3
vvN(dB)	-67.42	-63.08	-65.67	-75.16	11.2
hhL(dB)	-16.51	-0.36	-5.31	-7.78	56.6
vvL(dB)	-20.78	1.86	-4.51	-4.69	96.0
ppN(m/s)	-12.63	12.42	0.12	4.17	
ppT(m/s)	-99.77	98.15	0.96	32.96	
hh/vv(dB)	-NaN	93.39	-NaN	77.04	-533
vh/hh(dB)	-NaN	3.15	-36.61	-18.98	5796
hv/vv(dB)	-NaN	-18.68	-43.81	-36.10	590.
hnjmp(dB)	-2.46	2.27	0.16	-8.46	13.7
vnjmp(dB)	-2.43	2.26	0.17	-8.38	14.0