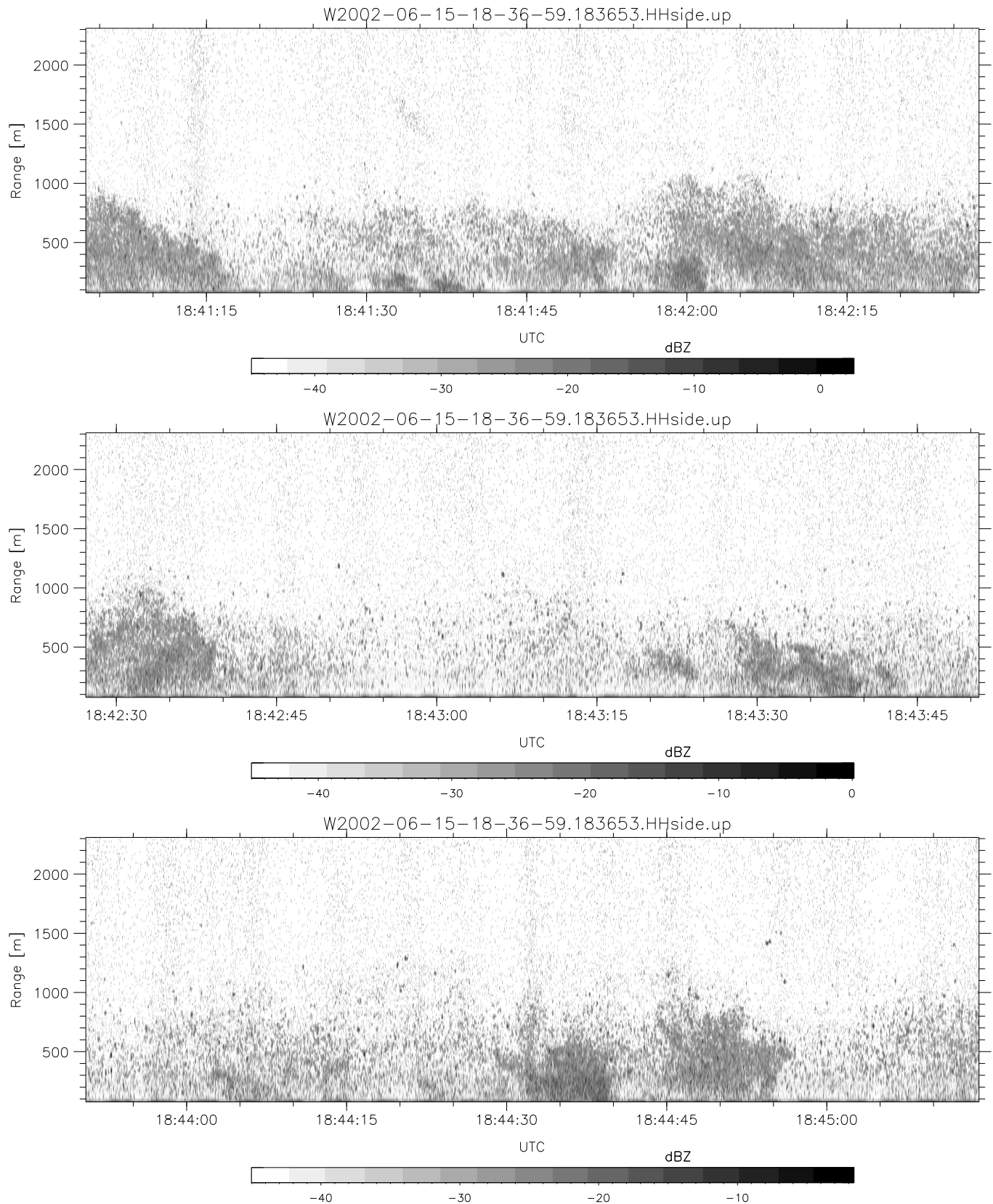


IHOP 2002 (dual-antenna config, modes 1,3,4,7) Data (cal: 49.0,50.0)

W2002-06-15-18-36-59 - SPPMAG
 IRIG:1,UTC: 18:36:53.75 to 19:12:47.58, Dur: 2154s
 TimeLngth: 2153.82s, TimeInt: 24ms (40.4pps)
 TimeCor=-13.0s, DSPDif(mn,min,mx):24,20,369
 PPS(min,max,std): 27,42,2.65
 Prof: 787 to 87898, NumProf(t/r): 87111/30122
 ProcTime/Recs: 18:36:53-18:49:11/0-30121
 MxAcQtime: 17ms; DRate: 96.8KB/s; Flags: 0, 0, 0
 Pulse: 275ns, IFfilt: 5.0MHz; ppPol: HH
 TxPol: H, PRF: 20 kHz
 Range: Delay 75m, Spacing 15m, Gates 150
 Ave. Pulses: 348, Rng/Prof Aspect@90m/s: 6.7

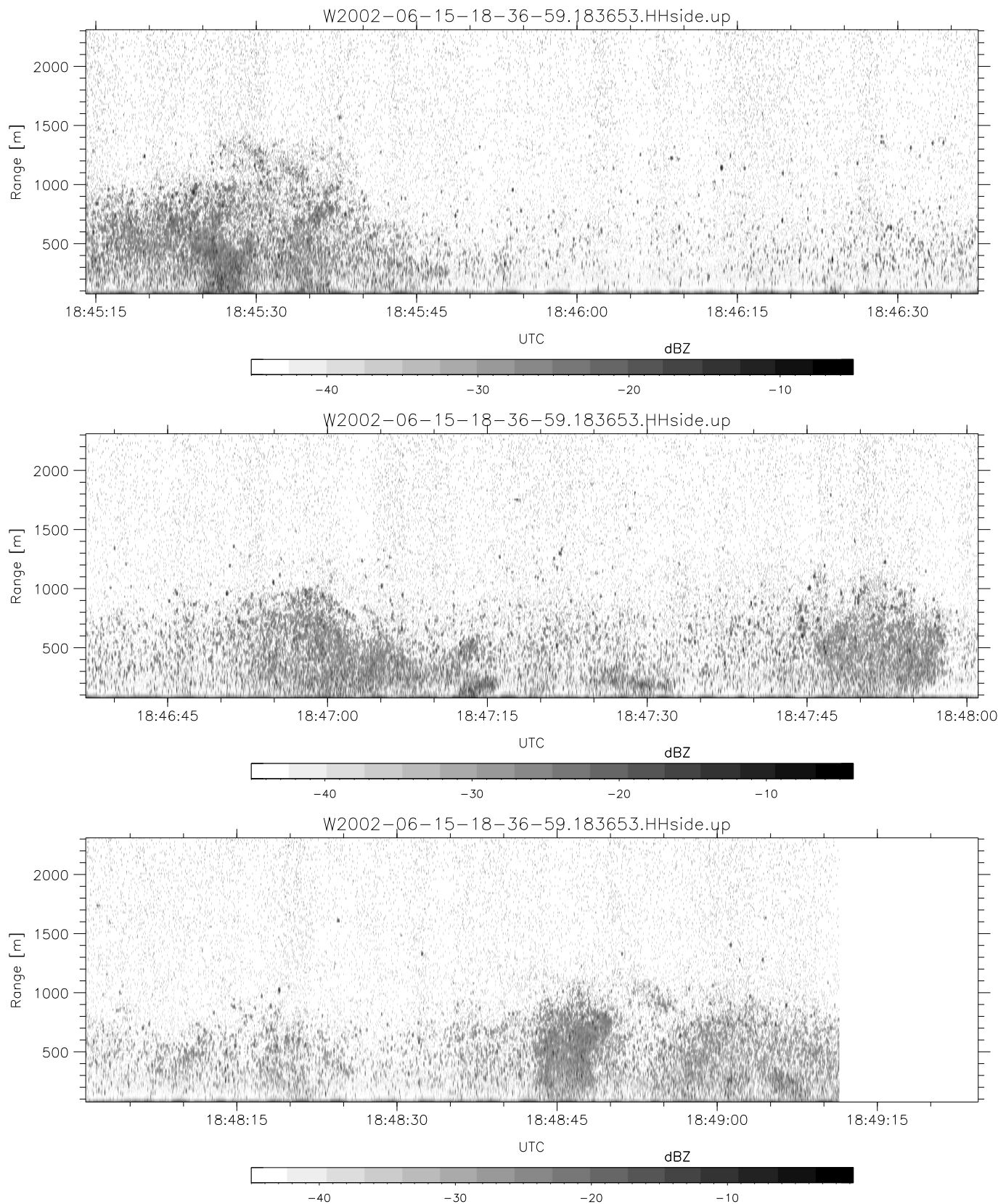
	Min	Max	Mean	Std	Varc%
hhN(dB)	-66.79	-61.91	-65.89	-77.25	7.3
vvN(dB)	-67.13	-61.84	-66.12	-77.24	7.7
hhL(dB)	-17.24	-2.04	-7.22	-9.18	63.7
vhL(dB)	-25.87	-3.84	-10.79	-11.13	92.4
ppN(m/s)	-15.80	15.80	0.14	9.11	
ppT(m/s)	-0.07	0.03	-0.00	0.01	
vh/hh(dB)	-NaN	-18.55	-33.59	-28.41	329.
hnjmp(dB)	-2.35	2.83	0.14	-11.47	6.9
vnjmp(dB)	-2.12	3.65	0.14	-11.41	7.0



IHOP 2002 (dual-antenna config, modes 1,3,4,7) Data (cal: 49.0,50.0)

W2002-06-15-18-36-59 - SPPMAG
 IRIG:1,UTC: 18:36:53.75 to 19:12:47.58, Dur: 2154s
 TimeLngth: 2153.82s, TimeInt: 24ms (40.4pps)
 TimeCor=-13.0s, DSPDif(mn,min,mx):24,20,369
 PPS(min,max,std): 27,42,2.65
 Prof: 787 to 87898, NumProf(t/r): 87111/30122
 ProcTime/Recs: 18:36:53-18:49:11/0-30121
 MxACQtime: 17ms; DRate: 96.8KB/s; Flags: 0, 0, 0
 Pulse: 275ns, IFfilt: 5.0MHz; ppPol: HH
 TxPol: H, PRF: 20 kHz
 Range: Delay 75m, Spacing 15m, Gates 150
 Ave. Pulses: 348, Rng/Prof Aspect@90m/s: 6.7

	Min	Max	Mean	Std	Var%
hhN(dB)	-66.79	-61.91	-65.89	-77.25	7.3
vvN(dB)	-67.13	-61.84	-66.12	-77.24	7.7
hhL(dB)	-17.24	-2.04	-7.22	-9.18	63.7
vhL(dB)	-25.87	-3.84	-10.79	-11.13	92.4
ppN(m/s)	-15.80	15.80	0.14	9.11	
ppT(m/s)	-0.07	0.03	-0.00	0.01	
vh/hh(dB)	-NaN	-18.55	-33.59	-28.41	329.
hnjmp(dB)	-2.35	2.83	0.14	-11.47	6.9
vnjmp(dB)	-2.12	3.65	0.14	-11.41	7.0



IHOP 2002 (dual-antenna config, modes 1,3,4,7) Data (cal: 49.0,50.0)

W2002-06-15-18-36-59 - SPPMAG
 IRIG:1,UTC: 18:36:53.75 to 19:12:47.58, Dur: 2154s
 TimeLngth: 2153.82s, TimeInt: 24ms (40.4pps)
 TimeCor=-13.0s, DSPDif(mn,min,mx):24,20,369
 PPS(min,max,std): 27,42,2.65
 Prof: 787 to 87898, NumProf(t/r): 87111/30122
 ProcTime/Recs: 18:36:53-18:49:11/0-30121
 MxAcQtime: 17ms; DRate: 96.8KB/s; Flags: 0, 0, 0
 Pulse: 275ns, IFilt: 5.0MHz; ppPol: HH
 TxPol: H, PRF: 20 kHz
 Range: Delay 75m, Spacing 15m, Gates 150
 Ave. Pulses: 348, Rng/Prof Aspect@90m/s: 6.7

	Min	Max	Mean	Std	Var%
hhN(dB)	-66.79	-61.91	-65.89	-77.25	7.3
vvN(dB)	-67.13	-61.84	-66.12	-77.24	7.7
hhL(dB)	-17.24	-2.04	-7.22	-9.18	63.7
vhL(dB)	-25.87	-3.84	-10.79	-11.13	92.4
ppN(m/s)	-15.80	15.80	0.14	9.11	
ppT(m/s)	-0.07	0.03	-0.00	0.01	
vh/hh(dB)	-NaN	-18.55	-33.59	-28.41	329.
hnjmp(dB)	-2.35	2.83	0.14	-11.47	6.9
vnjmp(dB)	-2.12	3.65	0.14	-11.41	7.0