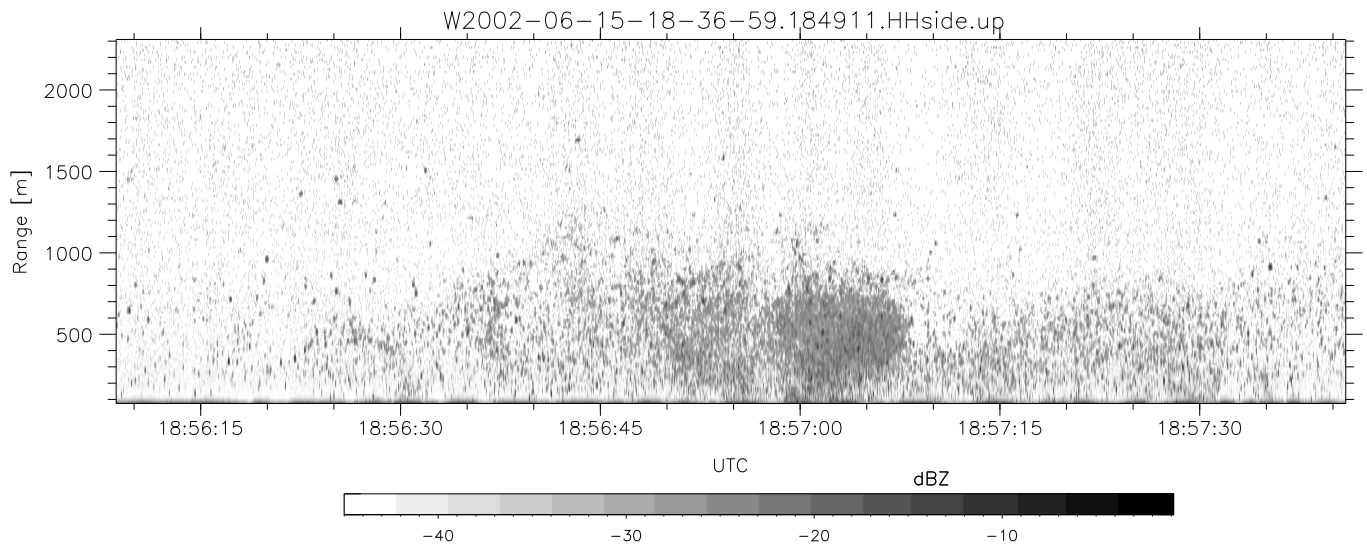
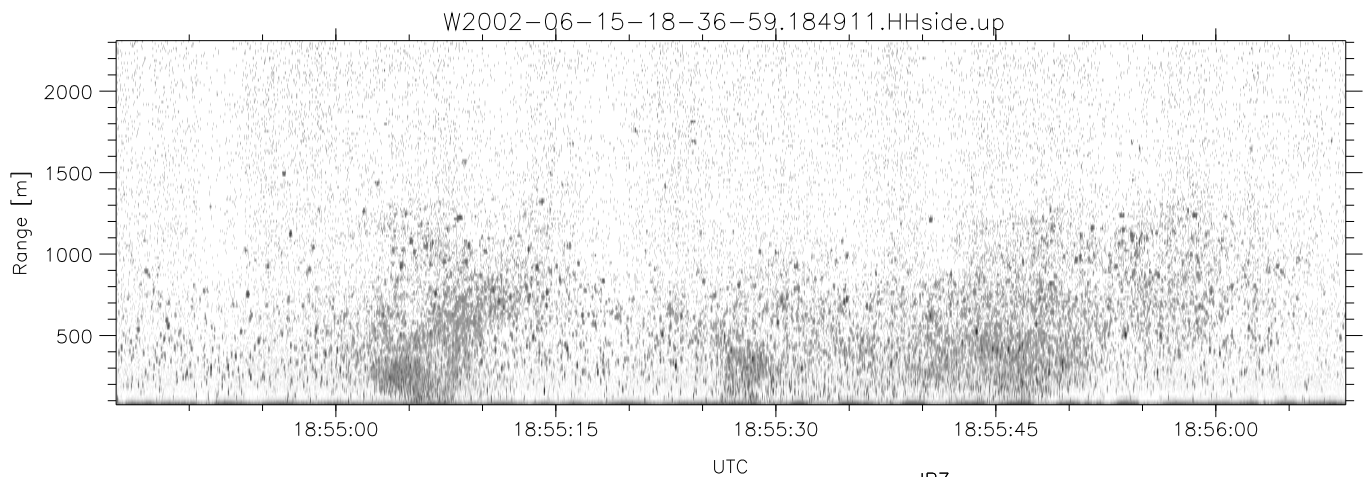
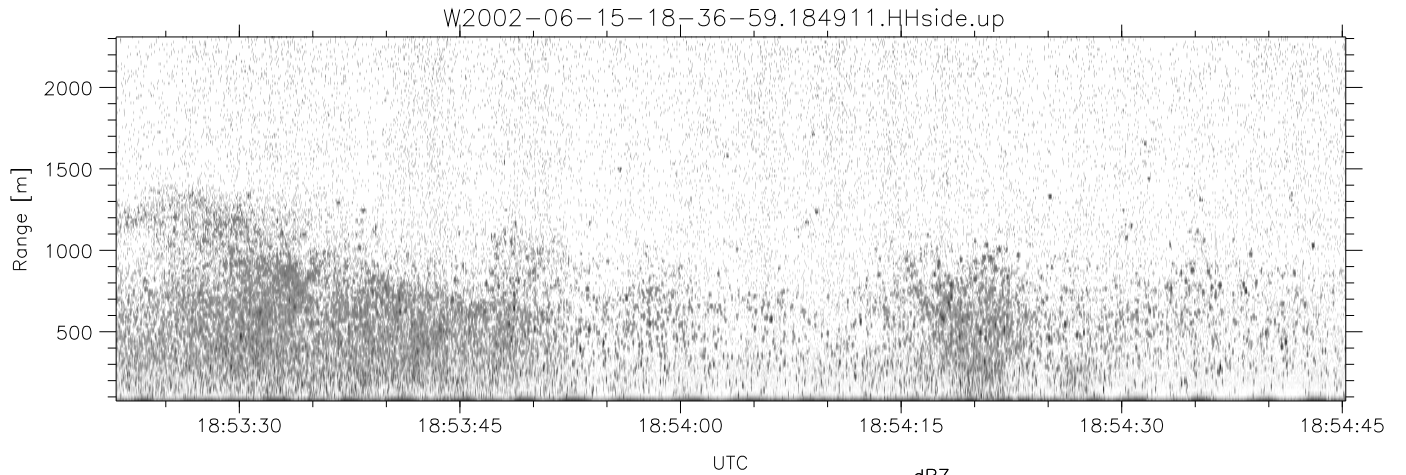


IHOP 2002 (dual-antenna config, modes 1,3,4,7) Data (cal: 49.0,50.0)

W2002-06-15-18-36-59 - SPPMAG
 IRIG:1,UTC: 18:36:53.75 to 19:12:47.58, Dur: 2154s
 TimeLngth: 2153.82s, TimeInt: 24ms (40.4pps)
 TimeCor=-13.0s, DSPDif(mn,min,mx):25,20,462
 PPS(min,max,std): 15,42,5.19
 Prof: 787 to 87898, NumProf(t/r): 87111/30122
 ProcTime/Recs: 18:49:11-19:01:48/30122-60243
 MxACQtime: 17ms; DRate: 96.8KB/s; Flags: 0, 0, 0
 Pulse: 275ns, IFfilt: 5.0MHz; ppPol: HH
 TxPol: H, PRF: 20 kHz
 Range: Delay 75m, Spacing 15m, Gates 150
 Ave. Pulses: 348, Rng/Prof Aspect@90m/s: 6.7

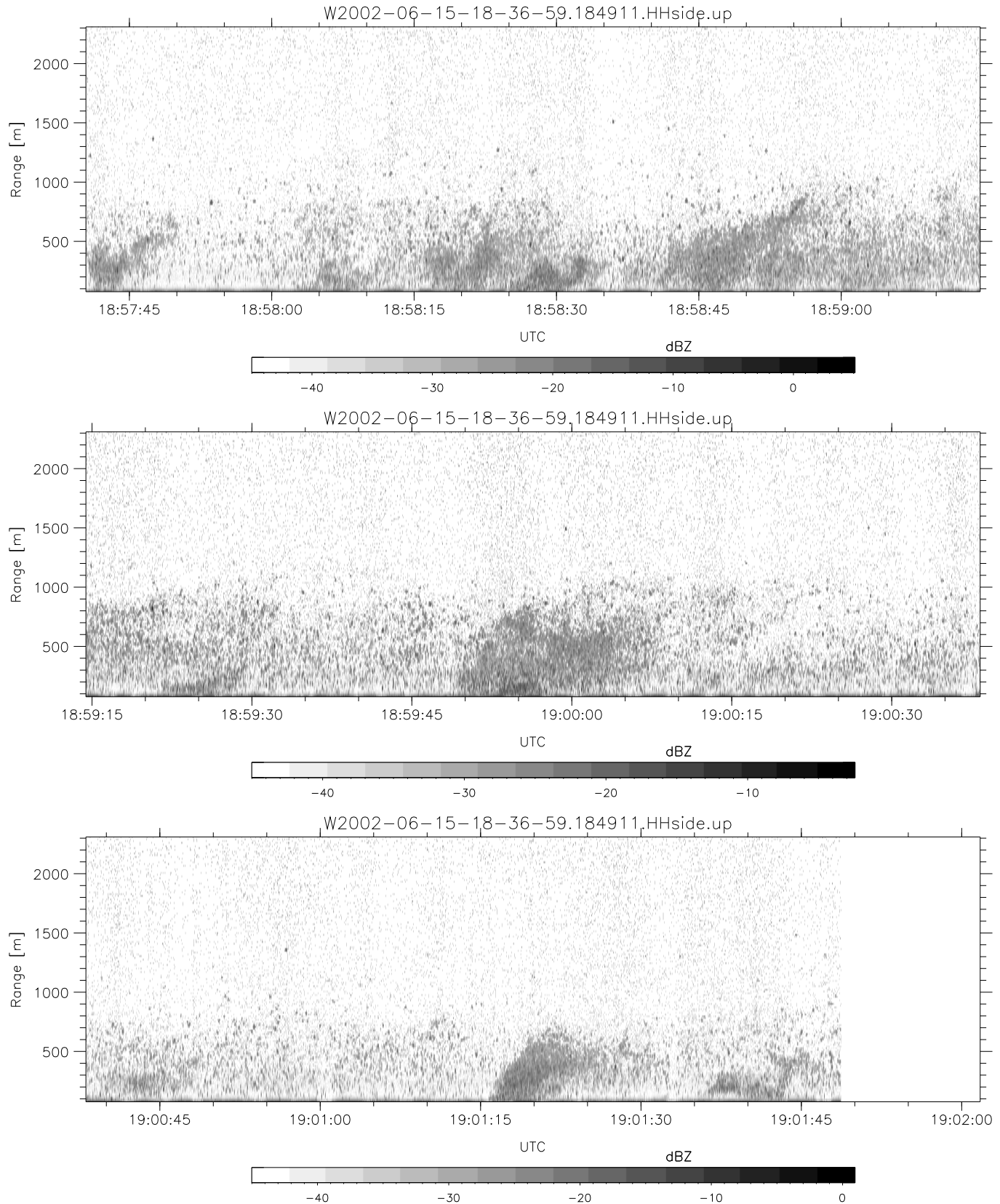
	Min	Max	Mean	Std	Varc%
hhN(dB)	-66.97	-65.13	-65.99	-78.93	5.1
vvN(dB)	-67.20	-65.07	-66.24	-78.97	5.3
hhL(dB)	-18.87	-1.73	-7.61	-8.80	76.0
vhL(dB)	-26.03	-3.32	-10.28	-10.77	89.4
ppN(m/s)	-15.80	15.80	-0.04	9.08	
ppT(m/s)	-0.11	0.03	-0.01	0.01	
vh/hh(dB)	-NaN	-10.78	-27.11	-20.32	477.
hnjmp(dB)	-1.01	1.34	0.14	-11.52	6.8
vnjmp(dB)	-1.04	1.21	0.14	-11.44	6.9



IHOP 2002 (dual-antenna config, modes 1,3,4,7) Data (cal: 49.0,50.0)

W2002-06-15-18-36-59 - SPPMAG
 IRIG:1,UTC: 18:36:53.75 to 19:12:47.58, Dur: 2154s
 TimeLngth: 2153.82s, TimeInt: 24ms (40.4pps)
 TimeCor=-13.0s, DSPDif(mn,min,mx):25,20,462
 PPS(min,max,std): 15,42,5.19
 Prof: 787 to 87898, NumProf(t/r): 87111/30122
 ProcTime/Recs: 18:49:11-19:01:48/30122-60243
 MxACQtime: 17ms; DRate: 96.8KB/s; Flags: 0, 0, 0
 Pulse: 275ns, IFfilt: 5.0MHz; ppPol: HH
 TxPol: H, PRF: 20 kHz
 Range: Delay 75m, Spacing 15m, Gates 150
 Ave. Pulses: 348, Rng/Prof Aspect@90m/s: 6.7

	Min	Max	Mean	Std	Varc%
hhN(dB)	-66.97	-65.13	-65.99	-78.93	5.1
vvN(dB)	-67.20	-65.07	-66.24	-78.97	5.3
hhL(dB)	-18.87	-1.73	-7.61	-8.80	76.0
vhL(dB)	-26.03	-3.32	-10.28	-10.77	89.4
ppN(m/s)	-15.80	15.80	-0.04	9.08	
ppT(m/s)	-0.11	0.03	-0.01	0.01	
vh/hh(dB)	-NaN	-10.78	-27.11	-20.32	477.
hnjmp(dB)	-1.01	1.34	0.14	-11.52	6.8
vnjmp(dB)	-1.04	1.21	0.14	-11.44	6.9



IHOP 2002 (dual-antenna config, modes 1,3,4,7) Data (cal: 49.0,50.0)

W2002-06-15-18-36-59 - SPPMAG
 IRIG:1,UTC: 18:36:53.75 to 19:12:47.58, Dur: 2154s
 TimeLngth: 2153.82s, TimeInt: 24ms (40.4pps)
 TimeCor=-13.0s, DSPDif(mn,min,mx):25,20,462
 PPS(min,max,std): 15,42,5.19
 Prof: 787 to 87898, NumProf(t/r): 87111/30122
 ProcTime/Recs: 18:49:11-19:01:48/30122-60243
 MxACQtime: 17ms; DRate: 96.8KB/s; Flags: 0, 0, 0
 Pulse: 275ns, IFfilt: 5.0MHz; ppPol: HH
 TxPol: H, PRF: 20 kHz
 Range: Delay 75m, Spacing 15m, Gates 150
 Ave. Pulses: 348, Rng/Prof Aspect@90m/s: 6.7

	Min	Max	Mean	Std	Varc%
hhN(dB)	-66.97	-65.13	-65.99	-78.93	5.1
vvN(dB)	-67.20	-65.07	-66.24	-78.97	5.3
hhL(dB)	-18.87	-1.73	-7.61	-8.80	76.0
vhL(dB)	-26.03	-3.32	-10.28	-10.77	89.4
ppN(m/s)	-15.80	15.80	-0.04	9.08	
ppT(m/s)	-0.11	0.03	-0.01	0.01	
vh/hh(dB)	-NaN	-10.78	-27.11	-20.32	477.
hnjmp(dB)	-1.01	1.34	0.14	-11.52	6.8
vnjmp(dB)	-1.04	1.21	0.14	-11.44	6.9