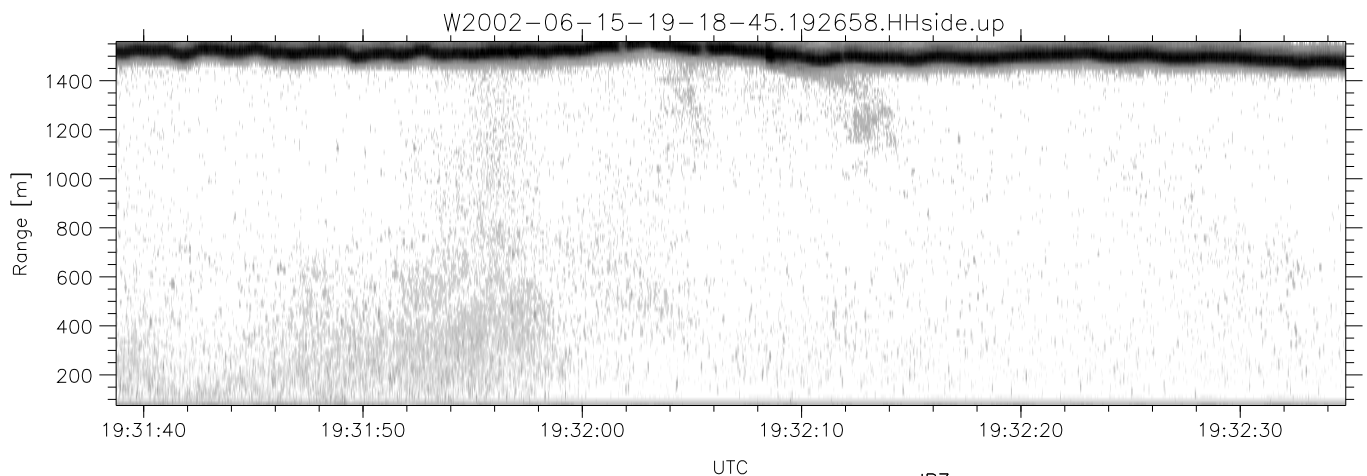
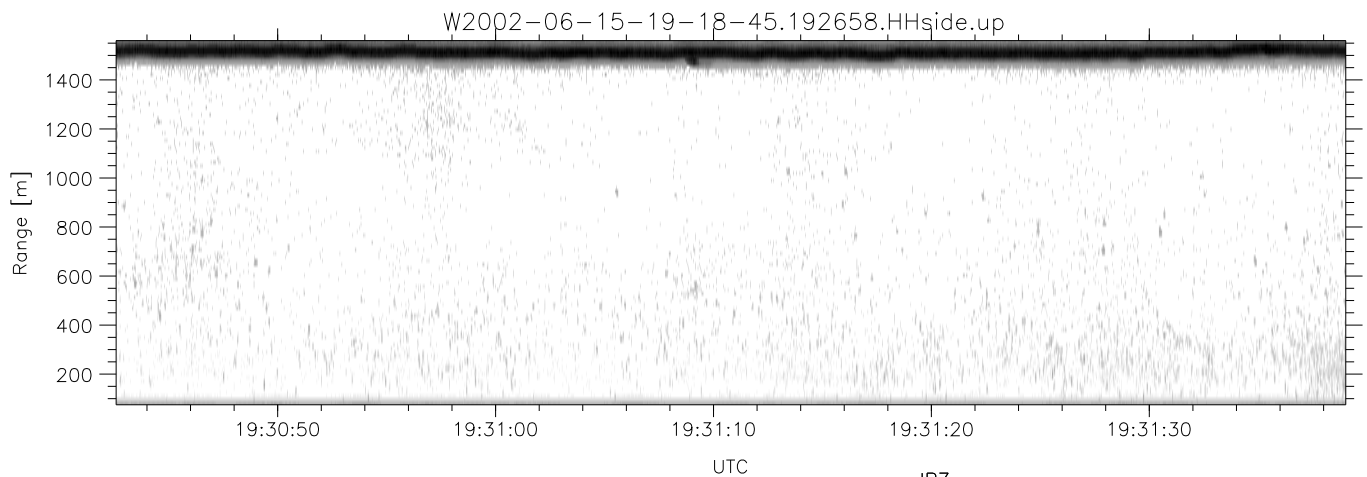
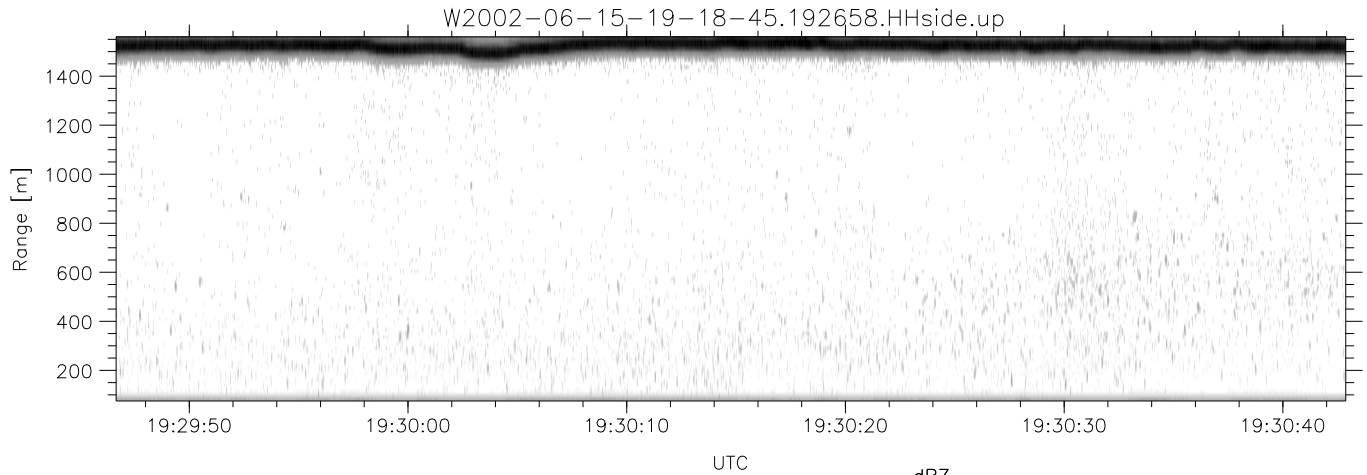


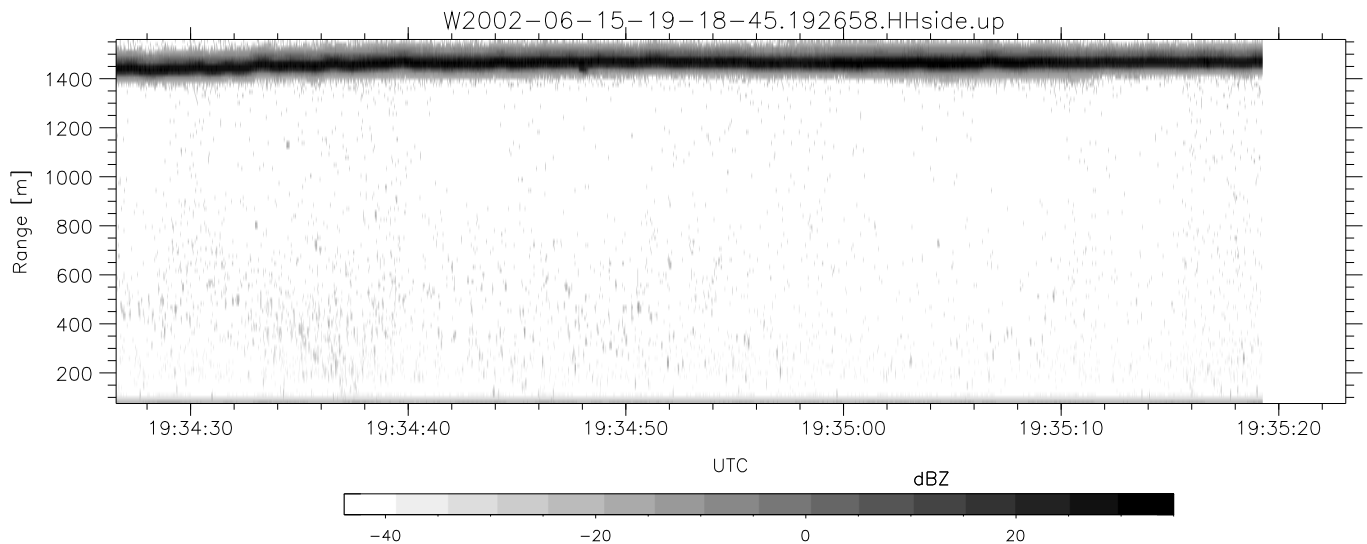
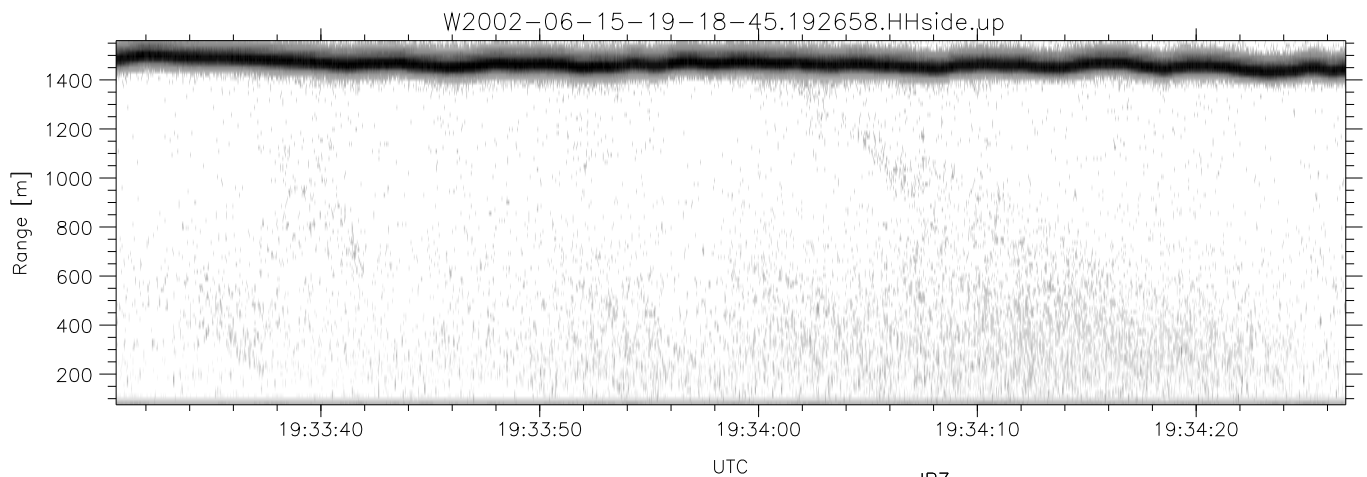
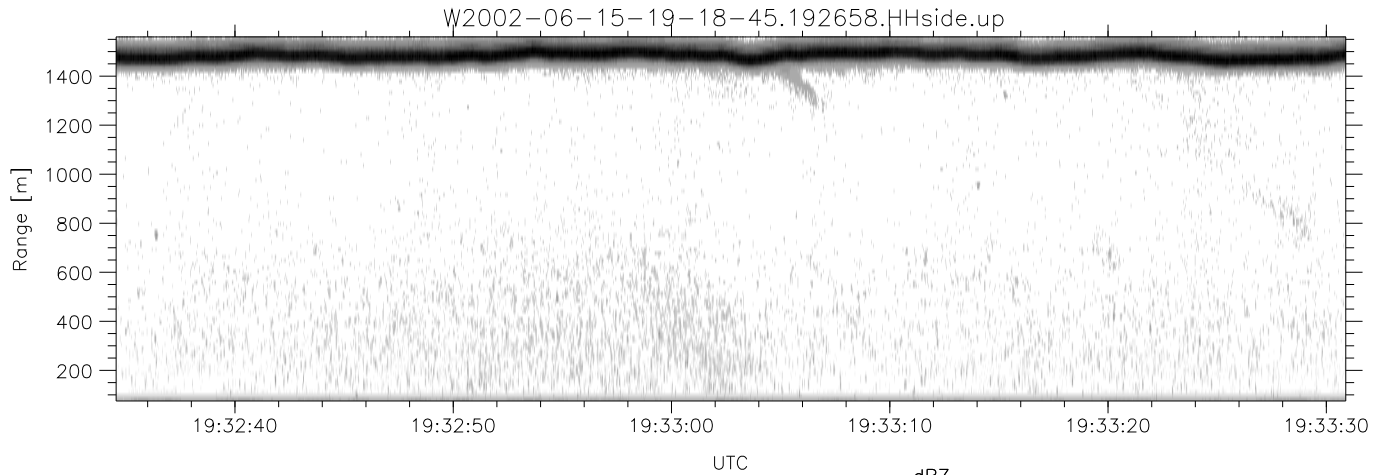
IHOP 2002 (dual-antenna config, modes 1,3,4,7) Data (cal: 49.0,50.0)

W2002-06-15-19-18-45 - PPMAG4	Min	Max	Mean	Std	Varc%	
IRIG:1,UTC: 19:18:39.52 to 19:51:37.07, Dur: 1978s	hhN(dB)	-68.20	-64.60	-66.14	-76.12	10.1
TimeLngth: 1977.55s, TimeInt: 29ms (34.1pps)	vvN(dB)	-68.52	-65.19	-66.62	-76.63	10.0
TimeCor=-13.0s, DSPDif(mn,min,mx):29,28,375	hhL(dB)	-12.97	-3.90	-7.06	-13.95	20.5
PPS(min,max,std): 24,36,2.36	vvL(dB)	-3.41	-0.27	-1.45	-11.63	9.6
Prof: 766 to 68226, NumProf(t/r): 67460/17069	ppN(m/s)	-12.78	12.59	-0.03	4.17	
ProcTime/Recs: 19:26:58-19:35:19/17069-34137	ppT(m/s)	-100.9	99.42	-0.27	32.97	
MxACQtime: 33ms; DRate: 191.0KB/s; Flags: 0, 0, 0	hh/vv(dB)	-NaN	92.02	49.20	72.34	2061
Pulse: 275ns, IFfilt: 5.0MHz; ppPol: HH HV VV	vh/hh(dB)	-NaN	-29.53	-50.24	-42.61	580.
TxPol: HHVV, PRF: 20 10 20 10 kHz	hv/vv(dB)	-NaN	-32.85	-52.70	-46.62	406.
Range: Delay 75m, Spacing 15m, Gates 100	hn_jmp(dB)	-2.55	2.53	0.19	-8.30	14.1
Ave. Pulses: 84, Rng/Prof Aspect@90m/s: 5.7	vn_jmp(dB)	-2.40	2.33	0.18	-8.33	14.1



IHOP 2002 (dual-antenna config, modes 1,3,4,7) Data (cal: 49.0,50.0)

W2002-06-15-19-18-45 - PPMAG4	Min	Max	Mean	Std	Varc%	
IRIG:1,UTC: 19:18:39.52 to 19:51:37.07, Dur: 1978s	hhN (dB)	-68.20	-64.60	-66.14	-76.12	10.1
TimeLngth: 1977.55s, TimeInt: 29ms (34.1pps)	vvN (dB)	-68.52	-65.19	-66.62	-76.63	10.0
TimeCor=-13.0s, DSPDif(mn,min,mx):29,28,375	hhL (dB)	-12.97	-3.90	-7.06	-13.95	20.5
PPS(min,max,std): 24,36,2.36	vvL (dB)	-3.41	-0.27	-1.45	-11.63	9.6
Prof: 766 to 68226, NumProf(t/r): 67460/17069	ppN (m/s)	-12.78	12.59	-0.03	4.17	
ProcTime/Recs: 19:26:58-19:35:19/17069-34137	ppT (m/s)	-100.9	99.42	-0.27	32.97	
MxAcQtime: 33ms; DRate: 191.0KB/s; Flags: 0, 0, 0	hh/vv (dB)	-NaN	92.02	49.20	72.34	2061
Pulse: 275ns, IFfilt: 5.0MHz; ppPol: HH HV VV	vh/hh (dB)	-NaN	-29.53	-50.24	-42.61	580.
TxPol: HHVV, PRF: 20 10 20 10 kHz	hv/vv (dB)	-NaN	-32.85	-52.70	-46.62	406.
Range: Delay 75m, Spacing 15m, Gates 100	hn_jmp (dB)	-2.55	2.53	0.19	-8.30	14.1
Ave. Pulses: 84, Rng/Prof Aspect@90m/s: 5.7	vn_jmp (dB)	-2.40	2.33	0.18	-8.33	14.1



IHOP 2002 (dual-antenna config, modes 1,3,4,7) Data (cal: 49.0,50.0)

W2002-06-15-19-18-45 - PPMAG4  
 IRIG:1,UTC: 19:18:39.52 to 19:51:37.07, Dur: 1978s  
 TimeLngth: 1977.55s, TimeInt: 29ms (34.1pps)  
 TimeCor=-13.0s, DSPDif(mn,min,mx):29,28,375  
 PPS(min,max,std): 24,36,2.36  
 Prof: 766 to 68226, NumProf(t/r): 67460/17069  
 ProcTime/Recs: 19:26:58-19:35:19/17069-34137  
 MxACQtime: 33ms; DRate: 191.0KB/s; Flags: 0, 0, 0  
 Pulse: 275ns, IFfilt: 5.0MHz; ppPol: HH HV VV  
 TxPol: HHVV, PRF: 20 10 20 10 kHz  
 Range: Delay 75m, Spacing 15m, Gates 100  
 Ave. Pulses: 84, Rng/Prof Aspect@90m/s: 5.7

	Min	Max	Mean	Std	Varc%
hhN(dB)	-68.20	-64.60	-66.14	-76.12	10.1
vvN(dB)	-68.52	-65.19	-66.62	-76.63	10.0
hhL(dB)	-12.97	-3.90	-7.06	-13.95	20.5
vvL(dB)	-3.41	-0.27	-1.45	-11.63	9.6
ppN(m/s)	-12.78	12.59	-0.03	4.17	
ppT(m/s)	-100.9	99.42	-0.27	32.97	
hh/vv(dB)	-NaN	92.02	49.20	72.34	2061
vh/hh(dB)	-NaN	-29.53	-50.24	-42.61	580.
hv/vv(dB)	-NaN	-32.85	-52.70	-46.62	406.
hnjmp(dB)	-2.55	2.53	0.19	-8.30	14.1
vnjmp(dB)	-2.40	2.33	0.18	-8.33	14.1