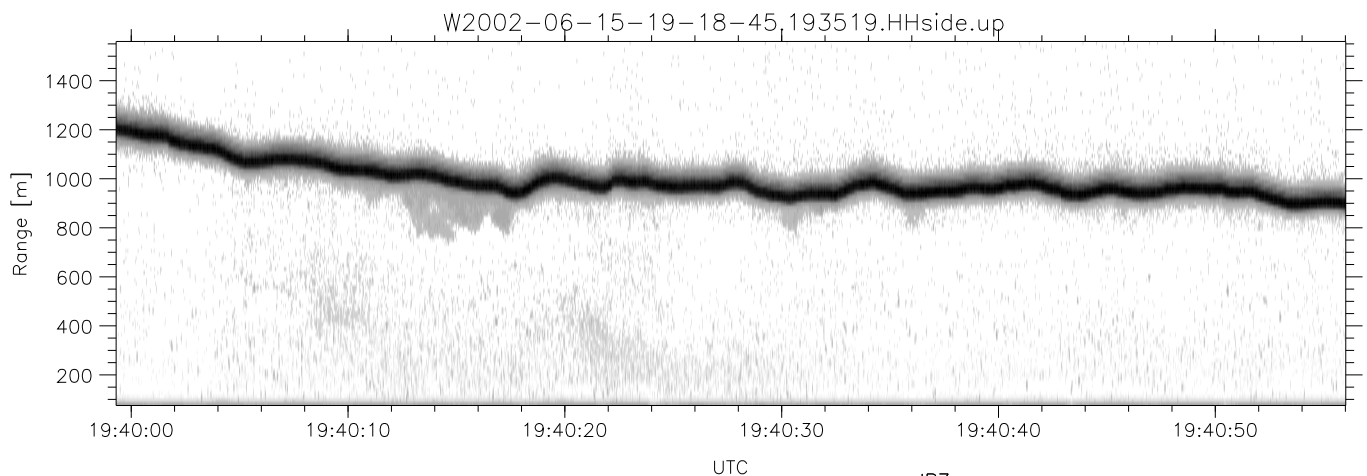
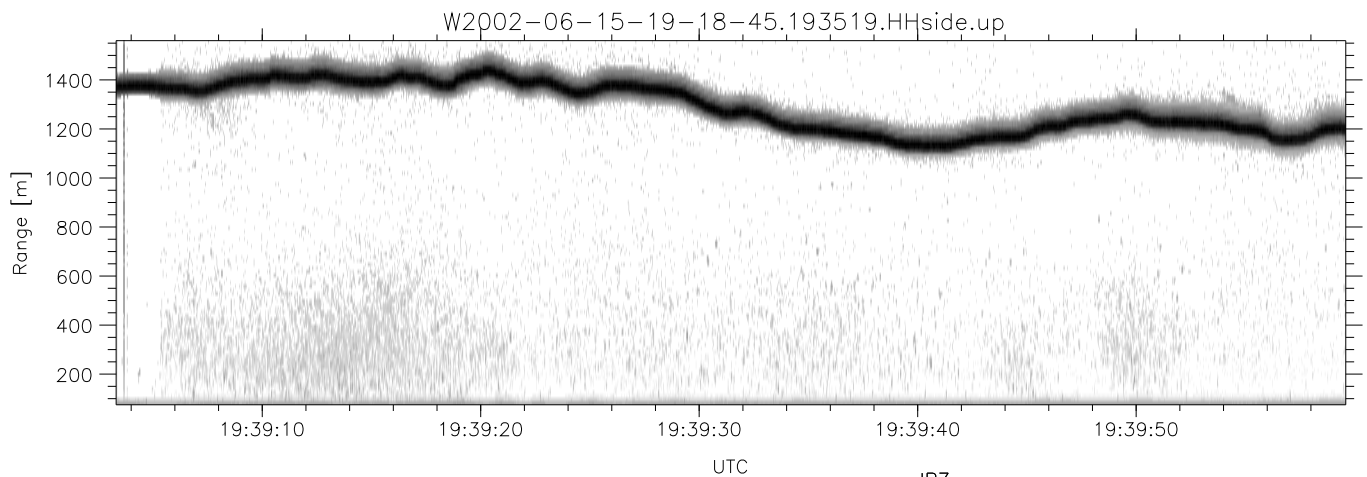
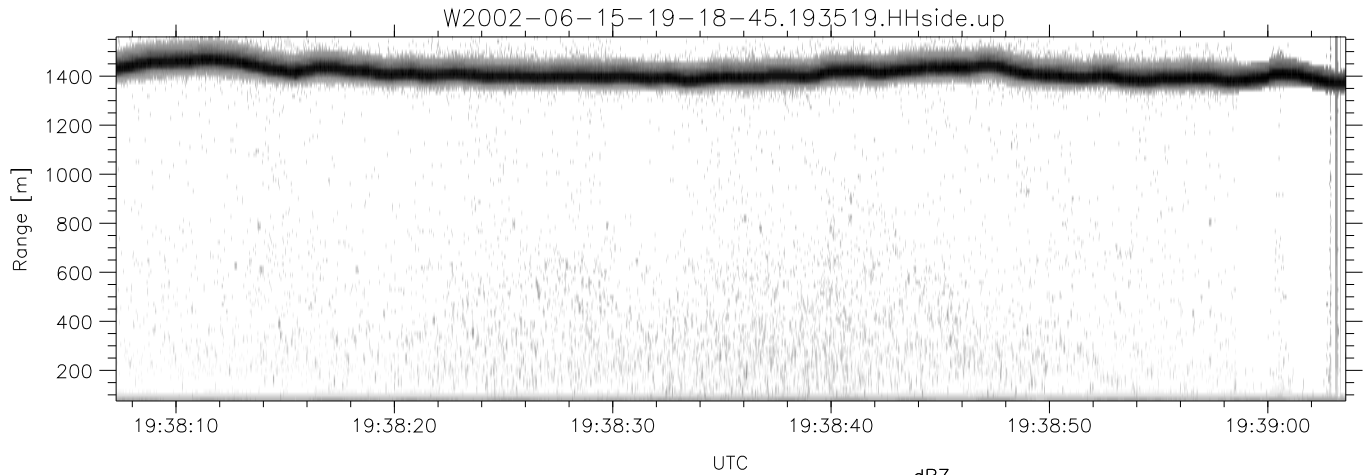


IHOP 2002 (dual-antenna config, modes 1,3,4,7) Data (cal: 49.0,50.0)

W2002-06-15-19-18-45 - PPMAG4  
 IRIG:1,UTC: 19:18:39.52 to 19:51:37.07, Dur: 1978s  
 TimeLngth: 1977.55s, TimeInt: 29ms (34.1pps)  
 TimeCor=-13.0s, DSPDif(mn,min,mx):29,28,373  
 PPS(min,max,std): 23,36,2.37  
 Prof: 766 to 68226, NumProf(t/r): 67460/17069  
 ProcTime/Recs: 19:35:19-19:43:40/34138-51206  
 MxACQtime: 33ms; DRate: 191.0KB/s; Flags: 0, 0, 0  
 Pulse: 275ns, IFfilt: 5.0MHz; ppPol: HH HV VV  
 TxPol: HHVV, PRF: 20 10 20 10 kHz  
 Range: Delay 75m, Spacing 15m, Gates 100  
 Ave. Pulses: 84, Rng/Prof Aspect@90m/s: 5.7

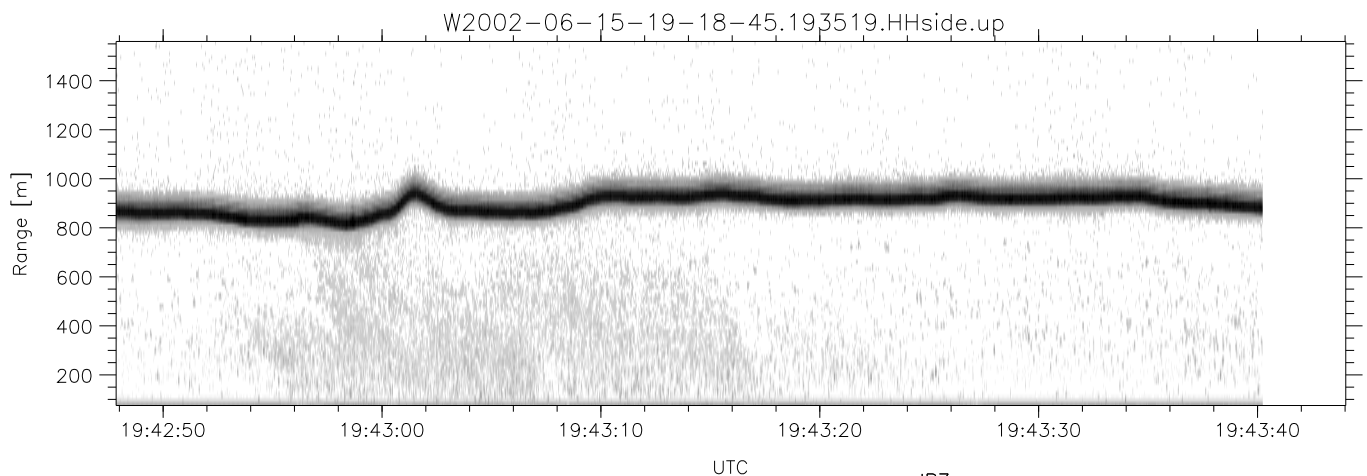
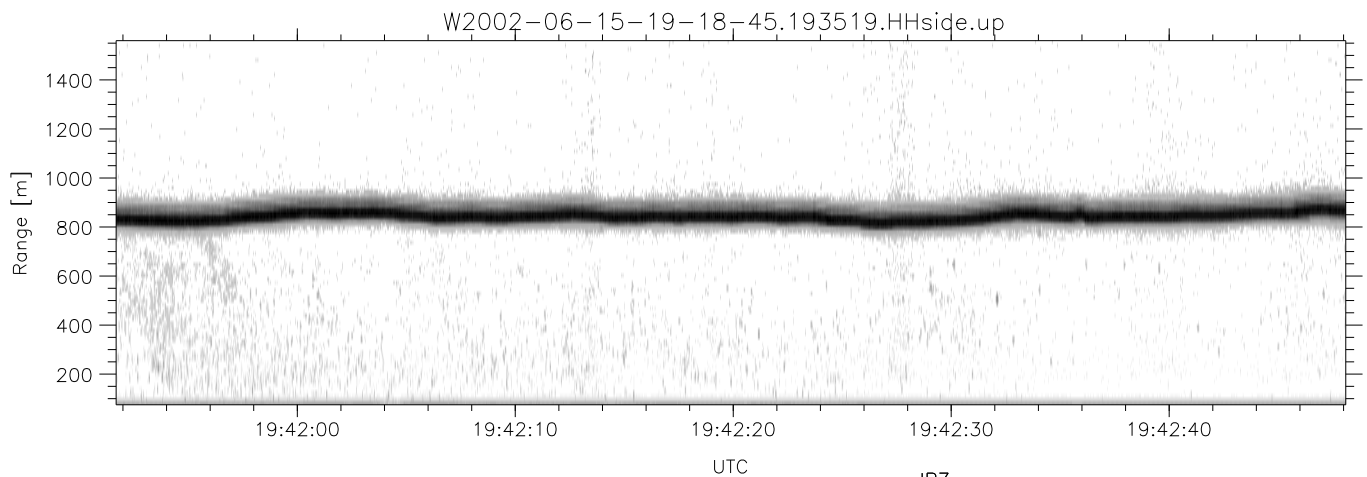
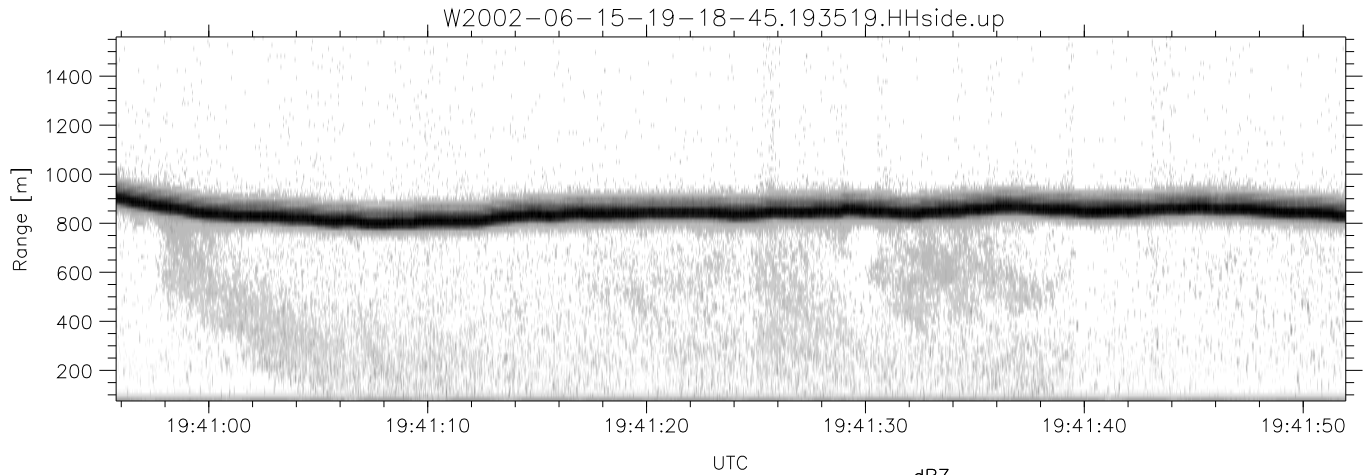
	Min	Max	Mean	Std	Varc%
hhN(dB)	-68.03	-58.00	-66.12	-73.29	19.2
vvN(dB)	-68.51	-58.65	-66.60	-74.14	17.6
hhL(dB)	-16.23	-2.94	-6.76	-12.52	26.6
vvL(dB)	-8.30	-0.56	-2.33	-8.33	25.1
ppN(m/s)	-12.22	12.44	0.20	4.14	
ppT(m/s)	-96.52	98.24	1.61	32.68	
hh/vv(dB)	-NaN	93.23	48.41	71.69	2129
vh/hh(dB)	-NaN	-18.56	-49.51	-38.58	1237
hv/vv(dB)	-NaN	-22.48	-50.68	-43.28	549.
hnjmp(dB)	-6.66	3.41	-0.10	-8.57	14.2
vnjmp(dB)	-5.22	2.68	-0.10	-8.52	14.4



IHOP 2002 (dual-antenna config, modes 1,3,4,7) Data (cal: 49.0,50.0)

W2002-06-15-19-18-45 - PPMAG4  
 IRIG:1,UTC: 19:18:39.52 to 19:51:37.07, Dur: 1978s  
 TimeLngth: 1977.55s, TimeInt: 29ms (34.1pps)  
 TimeCor=-13.0s, DSPDif(mn,min,mx):29,28,373  
 PPS(min,max,std): 23,36,2.37  
 Prof: 766 to 68226, NumProf(t/r): 67460/17069  
 ProcTime/Recs: 19:35:19-19:43:40/34138-51206  
 MxAcQtime: 33ms; DRate: 191.0KB/s; Flags: 0, 0, 0  
 Pulse: 275ns, IFilt: 5.0MHz; ppPol: HH HV VV  
 TxPol: HHVV, PRF: 20 10 20 10 kHz  
 Range: Delay 75m, Spacing 15m, Gates 100  
 Ave. Pulses: 84, Rng/Prof Aspect@90m/s: 5.7

	Min	Max	Mean	Std	Varc%
hhN(dB)	-68.03	-58.00	-66.12	-73.29	19.2
vvN(dB)	-68.51	-58.65	-66.60	-74.14	17.6
hhL(dB)	-16.23	-2.94	-6.76	-12.52	26.6
vvL(dB)	-8.30	-0.56	-2.33	-8.33	25.1
ppN(m/s)	-12.22	12.44	0.20	4.14	
ppT(m/s)	-96.52	98.24	1.61	32.68	
hh/vv(dB)	-NaN	93.23	48.41	71.69	2129
vh/hh(dB)	-NaN	-18.56	-49.51	-38.58	1237
hv/vv(dB)	-NaN	-22.48	-50.68	-43.28	549.
hn_jmp(dB)	-6.66	3.41	-0.10	-8.57	14.2
vn_jmp(dB)	-5.22	2.68	-0.10	-8.52	14.4



IHOP 2002 (dual-antenna config, modes 1,3,4,7) Data (cal: 49.0,50.0)

W2002-06-15-19-18-45 - PPMAG4  
 IRIG:1,UTC: 19:18:39.52 to 19:51:37.07, Dur: 1978s  
 TimeLngth: 1977.55s, TimeInt: 29ms (34.1pps)  
 TimeCor=-13.0s, DSPDif(mn,min,mx):29,28,373  
 PPS(min,max,std): 23,36,2.37  
 Prof: 766 to 68226, NumProf(t/r): 67460/17069  
 ProcTime/Recs: 19:35:19-19:43:40/34138-51206  
 MxAcQtime: 33ms; DRate: 191.0KB/s; Flags: 0, 0, 0  
 Pulse: 275ns, IFilt: 5.0MHz; ppPol: HH HV VV  
 TxPol: HHVV, PRF: 20 10 20 10 kHz  
 Range: Delay 75m, Spacing 15m, Gates 100  
 Ave. Pulses: 84, Rng/Prof Aspect@90m/s: 5.7

	Min	Max	Mean	Std	Varc%
hhN(dB)	-68.03	-58.00	-66.12	-73.29	19.2
vvN(dB)	-68.51	-58.65	-66.60	-74.14	17.6
hhL(dB)	-16.23	-2.94	-6.76	-12.52	26.6
vvL(dB)	-8.30	-0.56	-2.33	-8.33	25.1
ppN(m/s)	-12.22	12.44	0.20	4.14	
ppT(m/s)	-96.52	98.24	1.61	32.68	
hh/vv(dB)	-NaN	93.23	48.41	71.69	2129
vh/hh(dB)	-NaN	-18.56	-49.51	-38.58	1237
hv/vv(dB)	-NaN	-22.48	-50.68	-43.28	549.
hn_jmp(dB)	-6.66	3.41	-0.10	-8.57	14.2
vn_jmp(dB)	-5.22	2.68	-0.10	-8.52	14.4