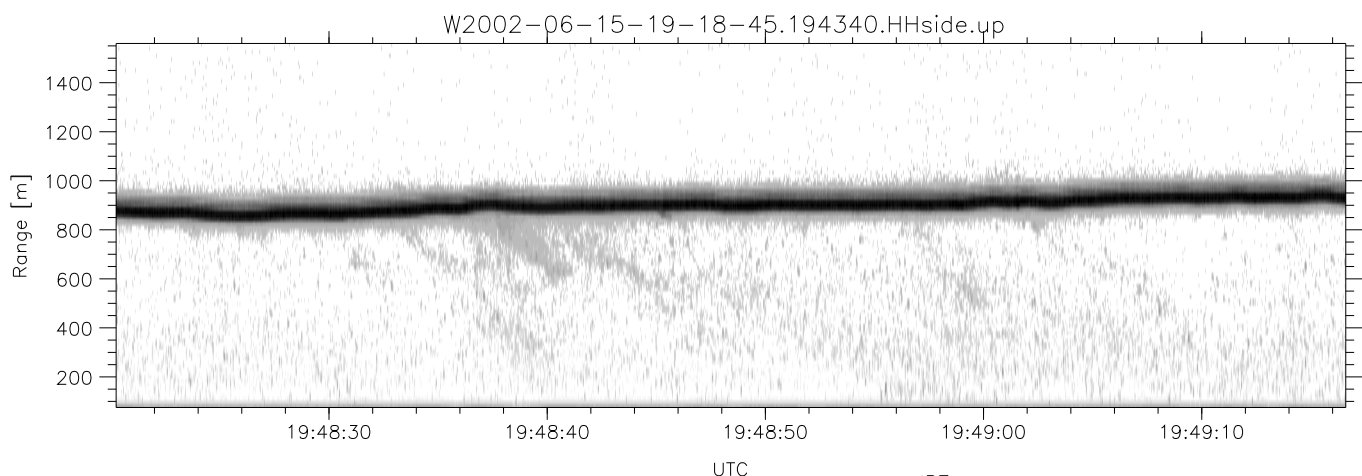
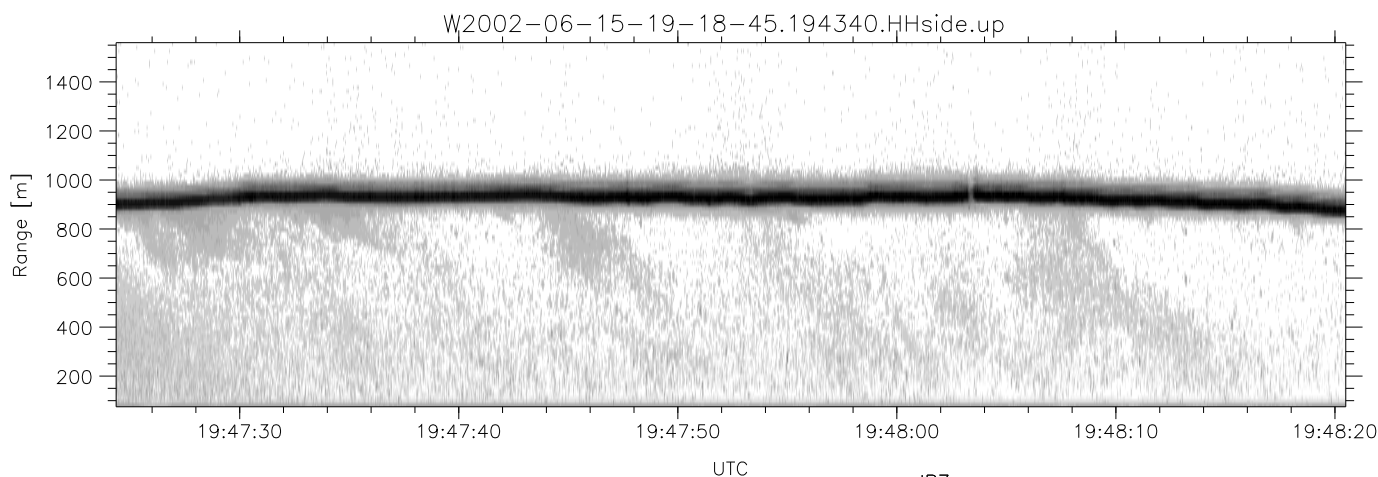
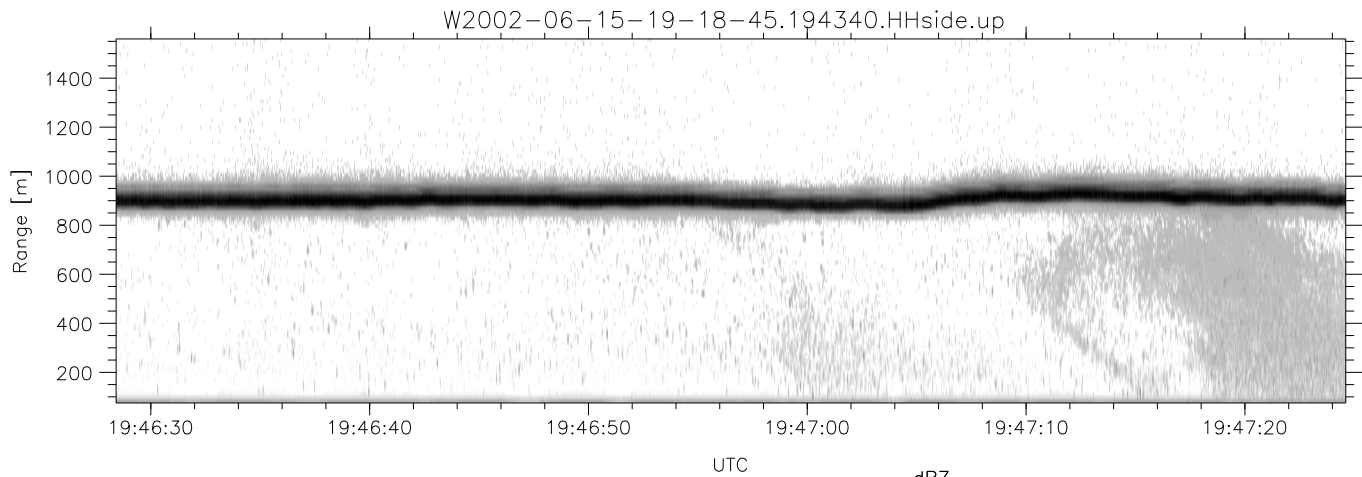


IHOP 2002 (dual-antenna config, modes 1,3,4,7) Data (cal: 49.0,50.0)

W2002-06-15-19-18-45 - PPMAG4  
 IRIG:1,UTC: 19:18:39.52 to 19:51:37.07, Dur: 1978s  
 TimeLngth: 1977.55s, TimeInt: 29ms (34.1pps)  
 TimeCor=-13.0s, DSPDif(mn,min,mx):29,28,384  
 PPS(min,max,std): 23,36,2.32  
 Prof: 766 to 68226, NumProf(t/r): 67460/16253  
 ProcTime/Recs: 19:43:40-19:51:37/51207-67459  
 MxACQtime: 33ms; DRate: 191.0KB/s; Flags: 0, 0, 0  
 Pulse: 275ns, IFilt: 5.0MHz; ppPol: HH HV VV  
 TxPol: HHVV, PRF: 20 10 20 10 kHz  
 Range: Delay 75m, Spacing 15m, Gates 100  
 Ave. Pulses: 84, Rng/Prof Aspect@90m/s: 5.7

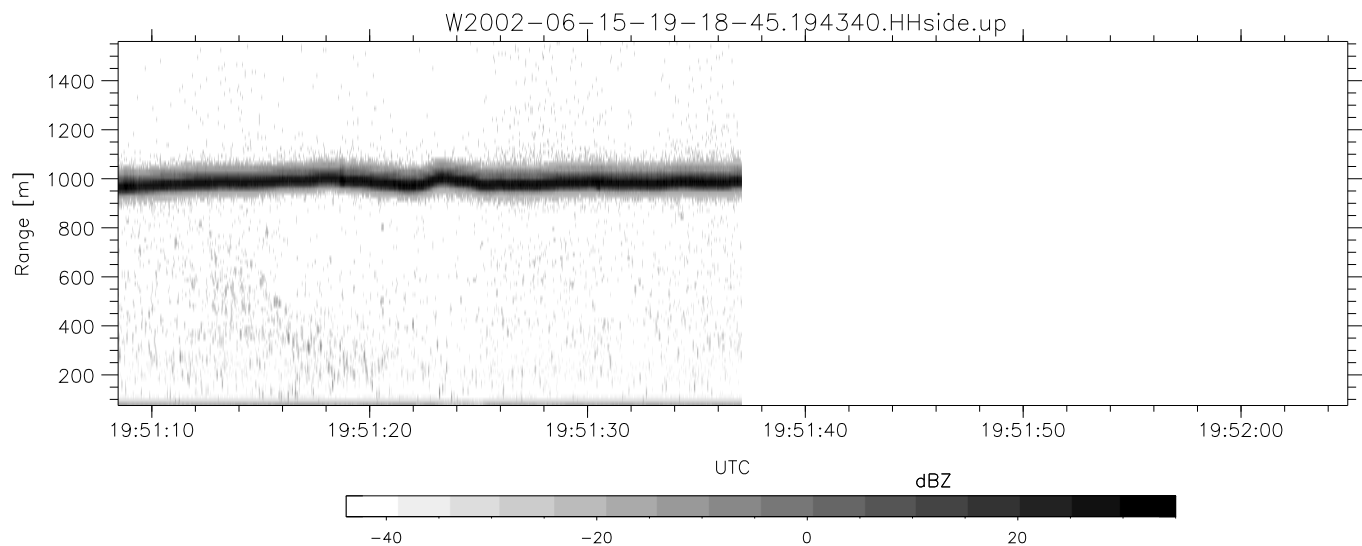
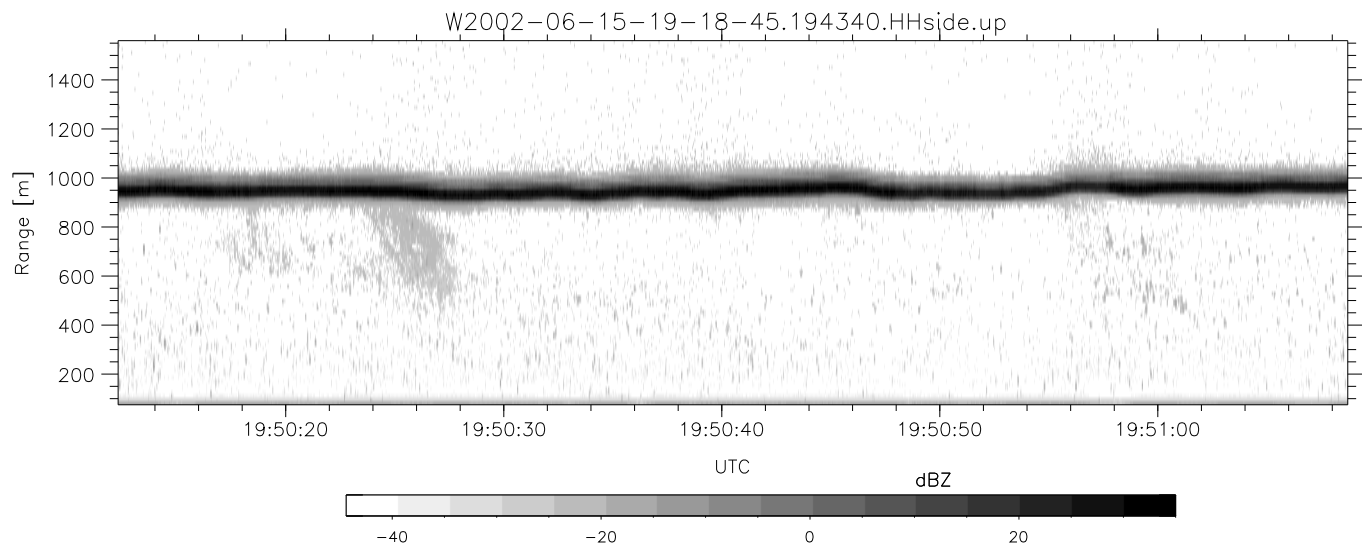
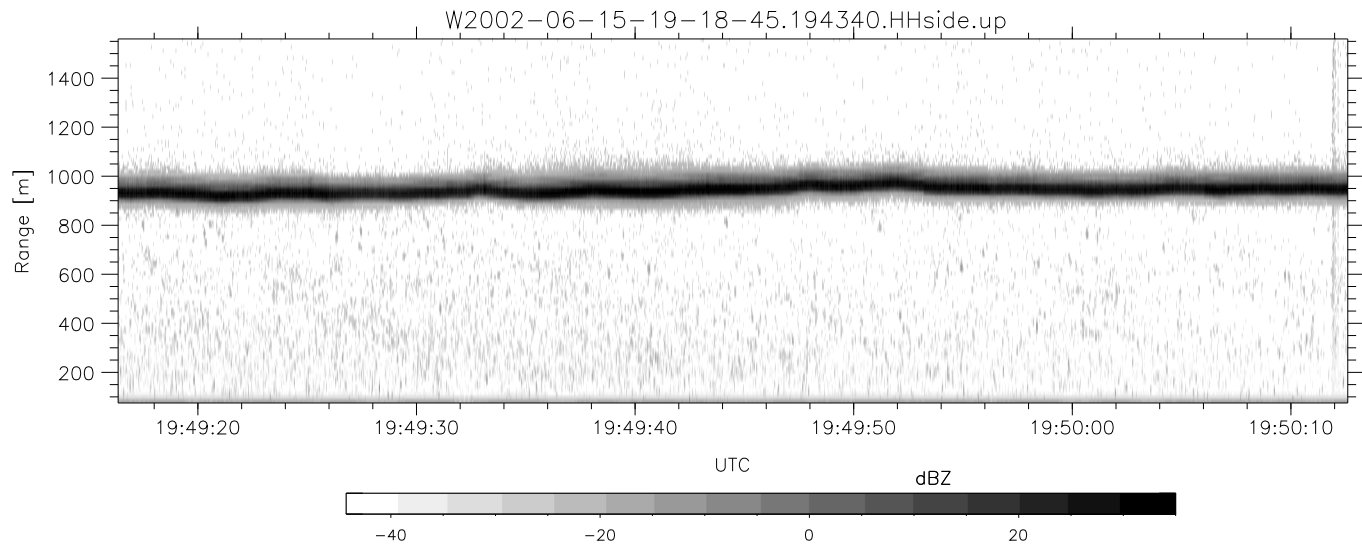
	Min	Max	Mean	Std	Varc%
hhN(dB)	-67.81	-64.63	-66.22	-76.22	10.0
vvN(dB)	-68.46	-65.12	-66.71	-76.64	10.2
hhL(dB)	-13.34	-4.85	-7.02	-13.48	22.6
vvL(dB)	-8.38	-1.67	-4.39	-10.50	24.5
ppN(m/s)	-12.86	12.53	-0.05	4.12	
ppT(m/s)	-101.6	99.02	-0.37	32.56	
hh/vv(dB)	-NaN	96.00	-NaN	79.33	-101
vh/hh(dB)	-NaN	-30.06	-48.90	-41.60	537.
hv/vv(dB)	-NaN	-31.94	-49.04	-44.85	262.
hnjmp(dB)	-2.32	2.17	0.17	-8.36	14.0
vnjmp(dB)	-1.90	2.26	0.19	-8.27	14.3



IHOP 2002 (dual-antenna config, modes 1,3,4,7) Data (cal: 49.0,50.0)

W2002-06-15-19-18-45 - PPMAG4  
 IRIG:1,UTC: 19:18:39.52 to 19:51:37.07, Dur: 1978s  
 TimeLngth: 1977.55s, TimeInt: 29ms (34.1pps)  
 TimeCor=-13.0s, DSPDif(mn,min,mx):29,28,384  
 PPS(min,max,std): 23,36,2.32  
 Prof: 766 to 68226, NumProf(t/r): 67460/16253  
 ProcTime/Recs: 19:43:40-19:51:37/51207-67459  
 MxACQtime: 33ms; DRate: 191.0KB/s; Flags: 0, 0, 0  
 Pulse: 275ns, IFfilt: 5.0MHz; ppPol: HH HV VV  
 TxPol: HHVV, PRF: 20 10 20 10 kHz  
 Range: Delay 75m, Spacing 15m, Gates 100  
 Ave. Pulses: 84, Rng/Prof Aspect@90m/s: 5.7

	Min	Max	Mean	Std	Varc%
hhN(dB)	-67.81	-64.63	-66.22	-76.22	10.0
vvN(dB)	-68.46	-65.12	-66.71	-76.64	10.2
hhL(dB)	-13.34	-4.85	-7.02	-13.48	22.6
vvL(dB)	-8.38	-1.67	-4.39	-10.50	24.5
ppN(m/s)	-12.86	12.53	-0.05	4.12	
ppT(m/s)	-101.6	99.02	-0.37	32.56	
hh/vv(dB)	-NaN	96.00	-NaN	79.33	-101
vh/hh(dB)	-NaN	-30.06	-48.90	-41.60	537.
hv/vv(dB)	-NaN	-31.94	-49.04	-44.85	262.
hnjmp(dB)	-2.32	2.17	0.17	-8.36	14.0
vnjmp(dB)	-1.90	2.26	0.19	-8.27	14.3



IHOP 2002 (dual-antenna config, modes 1,3,4,7) Data (cal: 49.0,50.0)

W2002-06-15-19-18-45 - PPMAG4	Min	Max	Mean	Std	Varc%	
IRIG:1,UTC: 19:18:39.52 to 19:51:37.07, Dur: 1978s	hhN(dB)	-67.81	-64.63	-66.22	-76.22	10.0
TimeLngth: 1977.55s, TimeInt: 29ms (34.1pps)	vvN(dB)	-68.46	-65.12	-66.71	-76.64	10.2
TimeCor=-13.0s, DSPDif(mn,min,mx):29,28,384	hhL(dB)	-13.34	-4.85	-7.02	-13.48	22.6
PPS(min,max,std): 23,36,2.32	vvL(dB)	-8.38	-1.67	-4.39	-10.50	24.5
Prof: 766 to 68226, NumProf(t/r): 67460/16253	ppN(m/s)	-12.86	12.53	-0.05	4.12	
ProcTime/Recs: 19:43:40-19:51:37/51207-67459	ppT(m/s)	-101.6	99.02	-0.37	32.56	
MxACQtime: 33ms; DRate: 191.0KB/s; Flags: 0, 0, 0	hh/vv(dB)	-NaN	96.00	-NaN	79.33	-101
Pulse: 275ns, IFfilt: 5.0MHz; ppPol: HH HV VV	vh/hh(dB)	-NaN	-30.06	-48.90	-41.60	537.
TxPol: HHVV, PRF: 20 10 20 10 kHz	hv/vv(dB)	-NaN	-31.94	-49.04	-44.85	262.
Range: Delay 75m, Spacing 15m, Gates 100	hn/jmp(dB)	-2.32	2.17	0.17	-8.36	14.0
Ave. Pulses: 84, Rng/Prof Aspect@90m/s: 5.7	vn/jmp(dB)	-1.90	2.26	0.19	-8.27	14.3