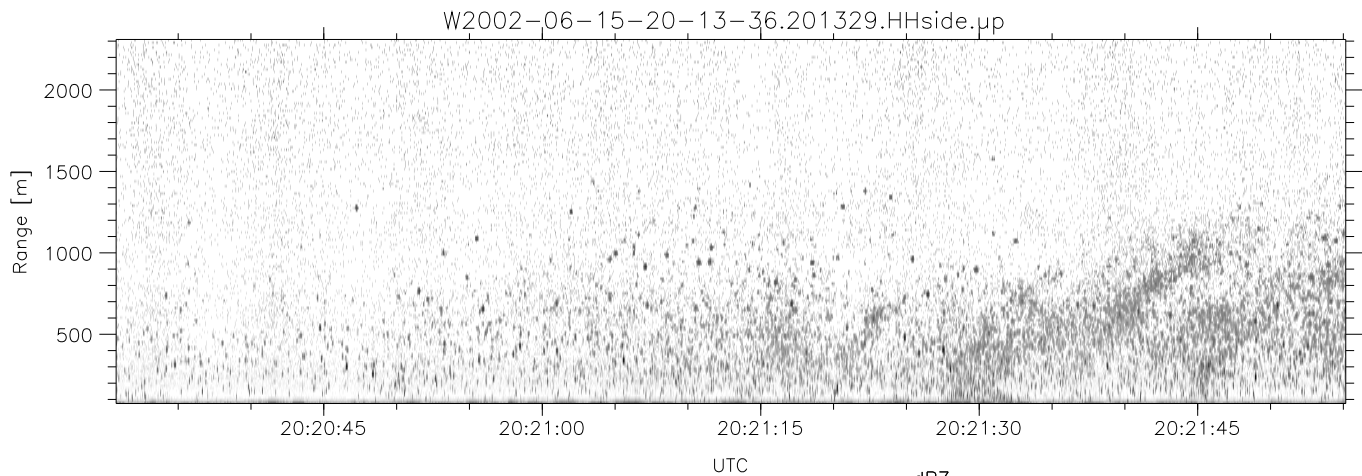
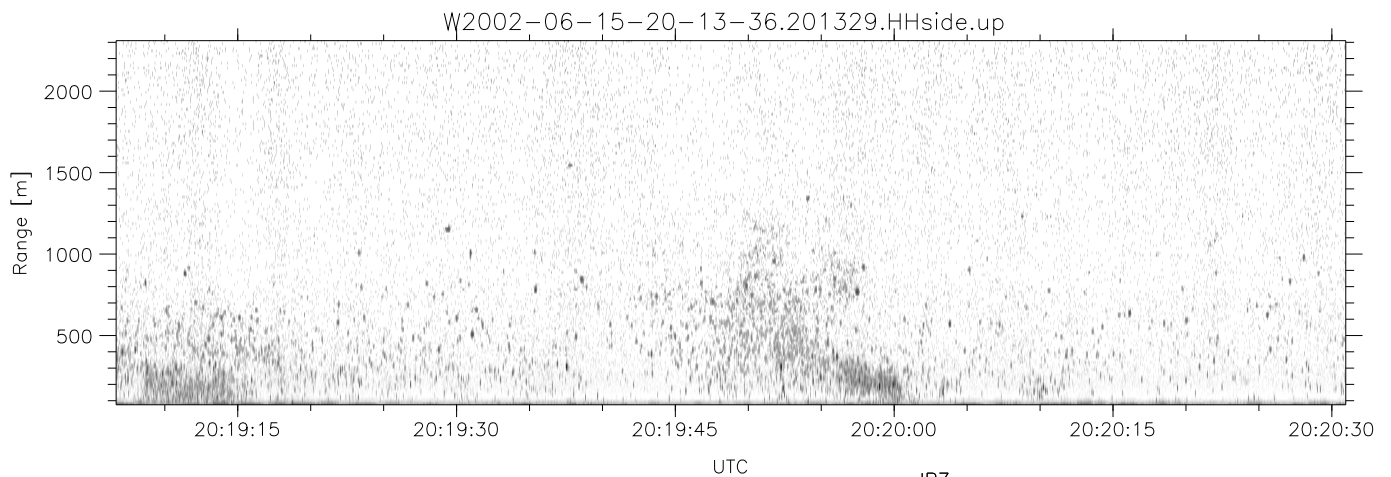
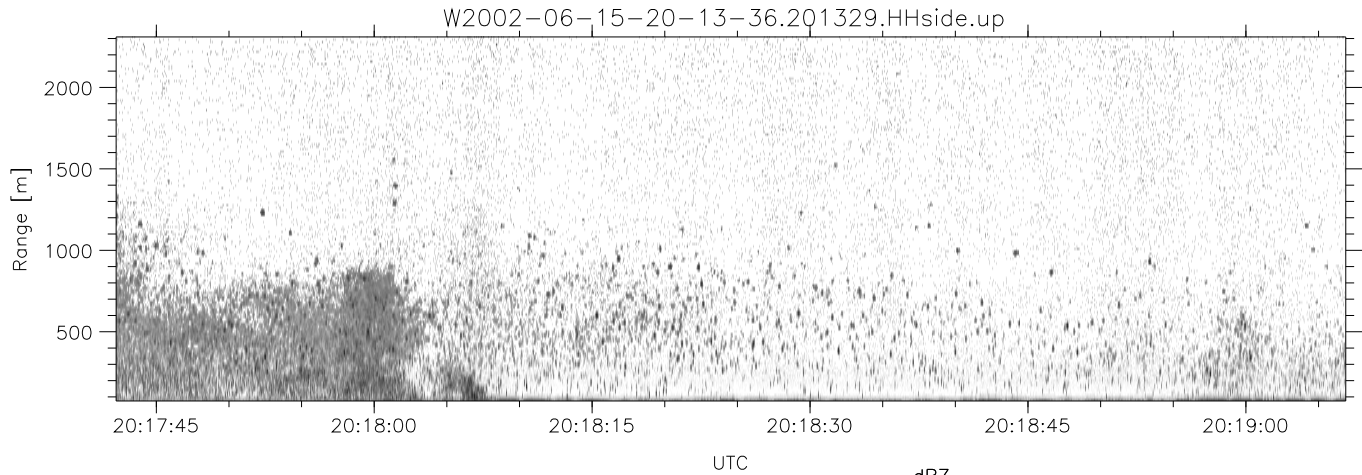


IHOP 2002 (dual-antenna config, modes 1,3,4,7) Data (cal: 49.0,50.0)

W2002-06-15-20-13-36 - SPPMAG  
 IRIG:1,UTC: 20:13:29.78 to 20:53:01.25, Dur: 2372s  
 TimeLngth: 2371.47s, TimeInt: 24ms (40.5pps)  
 TimeCor=-13.0s, DSPDif(mn,min,mx):25,20,332  
 PPS(min,max,std): 26,42,2.74  
 Prof: 636 to 96735, NumProf(t/r): 96099/30122  
 ProcTime/Recs: 20:13:29-20:25:53/0-30121  
 MxACQtime: 17ms; DRate: 97.0KB/s; Flags: 0, 0, 0  
 Pulse: 275ns, IFfilt: 5.0MHz; ppPol: HH  
 TxPol: H, PRF: 20 kHz  
 Range: Delay 75m, Spacing 15m, Gates 150  
 Ave. Pulses: 348, Rng/Prof Aspect@90m/s: 6.8

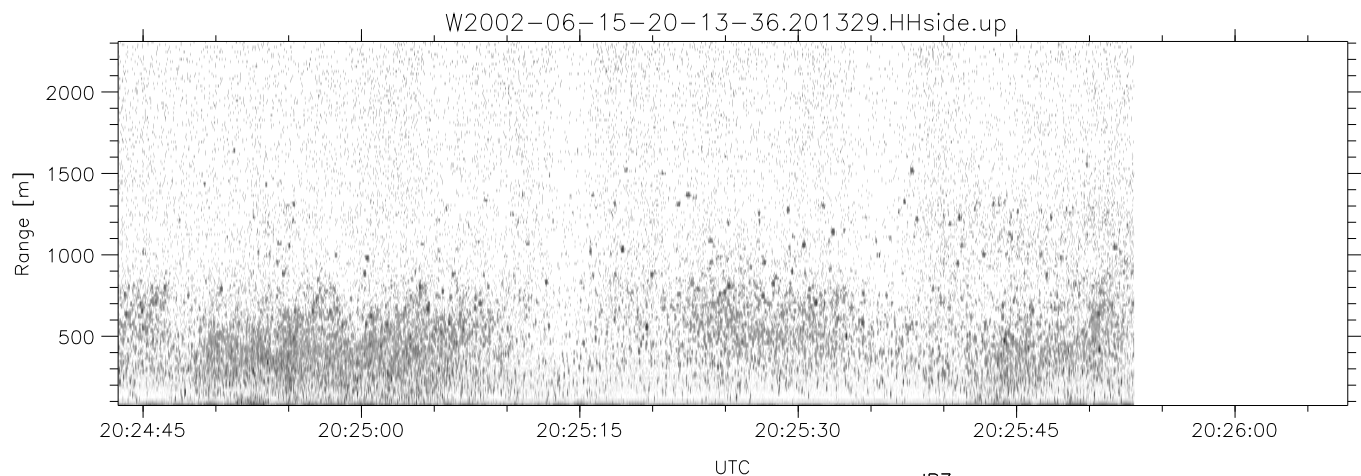
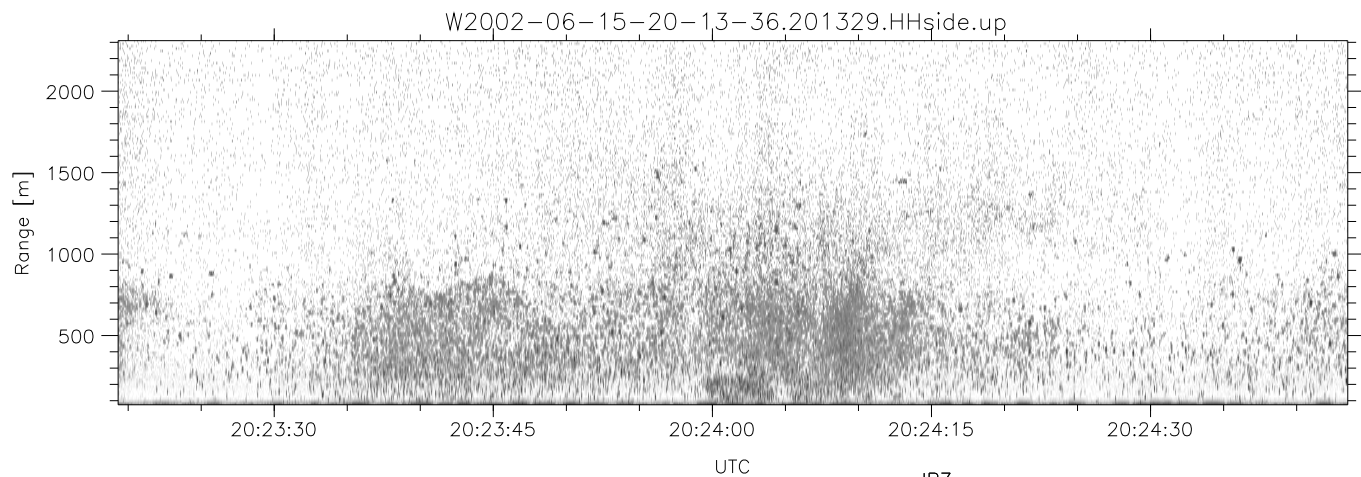
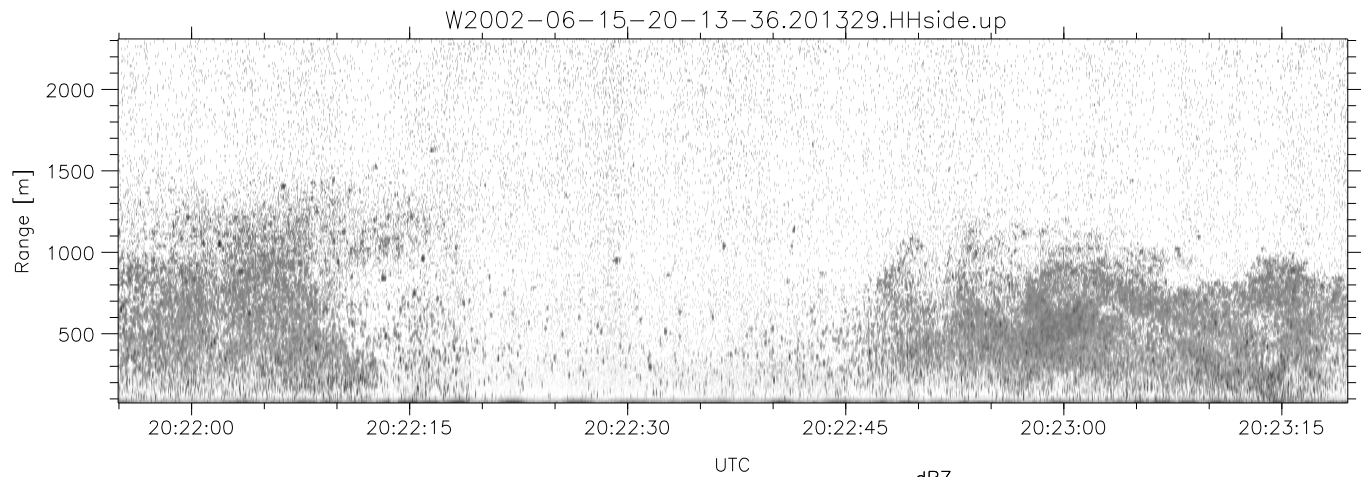
	Min	Max	Mean	Std	Varc%
hhN(dB)	-67.34	-65.55	-66.45	-79.42	5.0
vvN(dB)	-67.64	-65.91	-66.79	-79.66	5.2
hhL(dB)	-26.30	-3.71	-11.69	-12.43	84.4
vhL(dB)	-28.66	-4.06	-13.12	-13.61	89.3
ppN(m/s)	-15.80	15.80	0.09	8.97	
ppT(m/s)	-0.30	0.07	-0.01	0.02	
vh/hh(dB)	-NaN	-6.34	-21.56	-14.79	475.
hnjmp(dB)	-1.28	1.18	-0.12	-11.74	6.9
vnjmp(dB)	-1.36	1.01	-0.13	-11.75	6.9



IHOP 2002 (dual-antenna config, modes 1,3,4,7) Data (cal: 49.0,50.0)

W2002-06-15-20-13-36 - SPPMAG  
 IRIG:1,UTC: 20:13:29.78 to 20:53:01.25, Dur: 2372s  
 TimeLngth: 2371.47s, TimeInt: 24ms (40.5pps)  
 TimeCor=-13.0s, DSPDif(mn,min,mx):25,20,332  
 PPS(min,max,std): 26,42,2.74  
 Prof: 636 to 96735, NumProf(t/r): 96099/30122  
 ProcTime/Recs: 20:13:29-20:25:53/0-30121  
 MxACQtime: 17ms; DRate: 97.0KB/s; Flags: 0, 0, 0  
 Pulse: 275ns, IFfilt: 5.0MHz; ppPol: HH  
 TxPol: H, PRF: 20 kHz  
 Range: Delay 75m, Spacing 15m, Gates 150  
 Ave. Pulses: 348, Rng/Prof Aspect@90m/s: 6.8

	Min	Max	Mean	Std	Varc%
hhN(dB)	-67.34	-65.55	-66.45	-79.42	5.0
vvN(dB)	-67.64	-65.91	-66.79	-79.66	5.2
hhL(dB)	-26.30	-3.71	-11.69	-12.43	84.4
vhL(dB)	-28.66	-4.06	-13.12	-13.61	89.3
ppN(m/s)	-15.80	15.80	0.09	8.97	
ppT(m/s)	-0.30	0.07	-0.01	0.02	
vh/hh(dB)	-NaN	-6.34	-21.56	-14.79	475.
hnjmp(dB)	-1.28	1.18	-0.12	-11.74	6.9
vnjmp(dB)	-1.36	1.01	-0.13	-11.75	6.9



IHOP 2002 (dual-antenna config, modes 1,3,4,7) Data (cal: 49.0,50.0)

W2002-06-15-20-13-36 - SPPMAG  
 IRIG:1,UTC: 20:13:29.78 to 20:53:01.25, Dur: 2372s  
 TimeLngth: 2371.47s, TimeInt: 24ms (40.5pps)  
 TimeCor=-13.0s, DSPDif(mn,min,mx):25,20,332  
 PPS(min,max,std): 26,42,2.74  
 Prof: 636 to 96735, NumProf(t/r): 96099/30122  
 ProcTime/Recs: 20:13:29-20:25:53/0-30121  
 MxACQtime: 17ms; DRate: 97.0KB/s; Flags: 0, 0, 0  
 Pulse: 275ns, IFfilt: 5.0MHz; ppPol: HH  
 TxPol: H, PRF: 20 kHz  
 Range: Delay 75m, Spacing 15m, Gates 150  
 Ave. Pulses: 348, Rng/Prof Aspect@90m/s: 6.8

	Min	Max	Mean	Std	Varc%
hhN(dB)	-67.34	-65.55	-66.45	-79.42	5.0
vvN(dB)	-67.64	-65.91	-66.79	-79.66	5.2
hhL(dB)	-26.30	-3.71	-11.69	-12.43	84.4
vhL(dB)	-28.66	-4.06	-13.12	-13.61	89.3
ppN(m/s)	-15.80	15.80	0.09	8.97	
ppT(m/s)	-0.30	0.07	-0.01	0.02	
vh/hh(dB)	-NaN	-6.34	-21.56	-14.79	475.
hnjmp(dB)	-1.28	1.18	-0.12	-11.74	6.9
vnjmp(dB)	-1.36	1.01	-0.13	-11.75	6.9