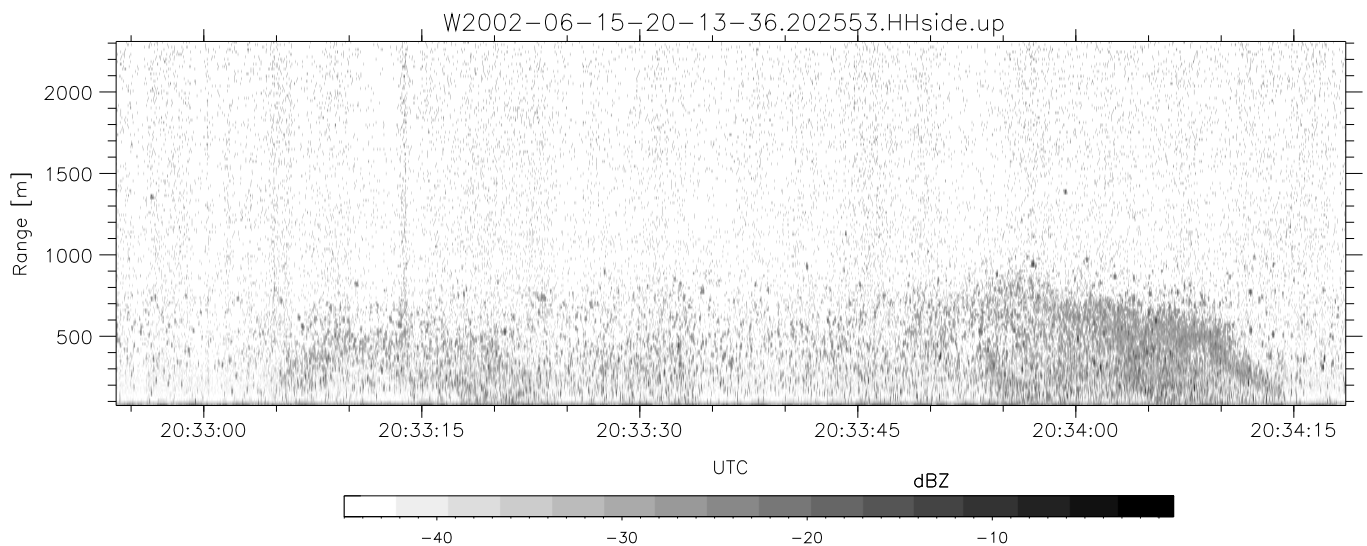
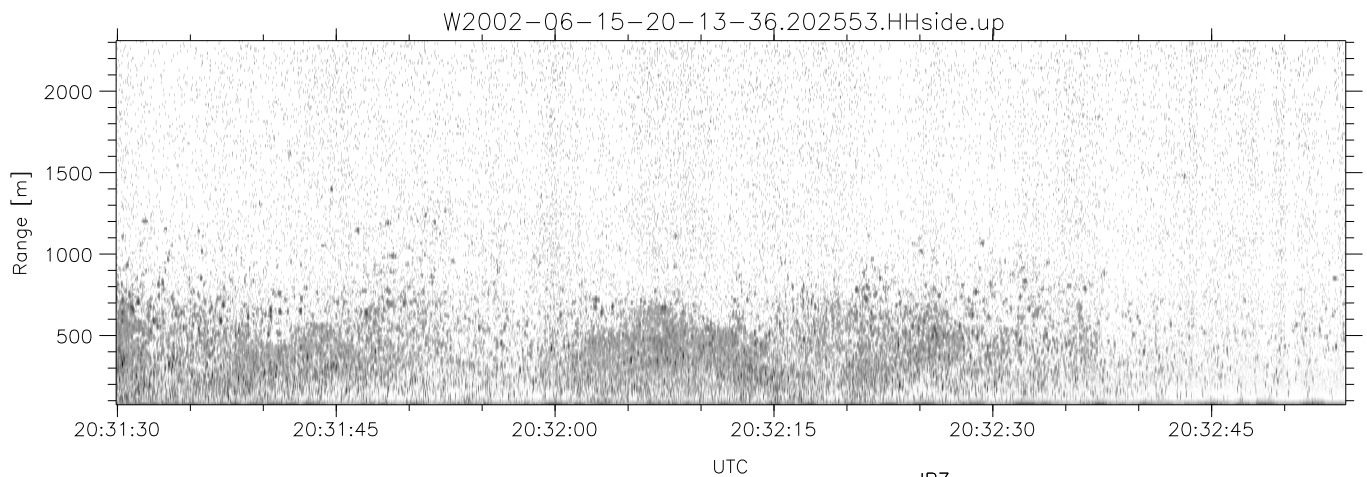
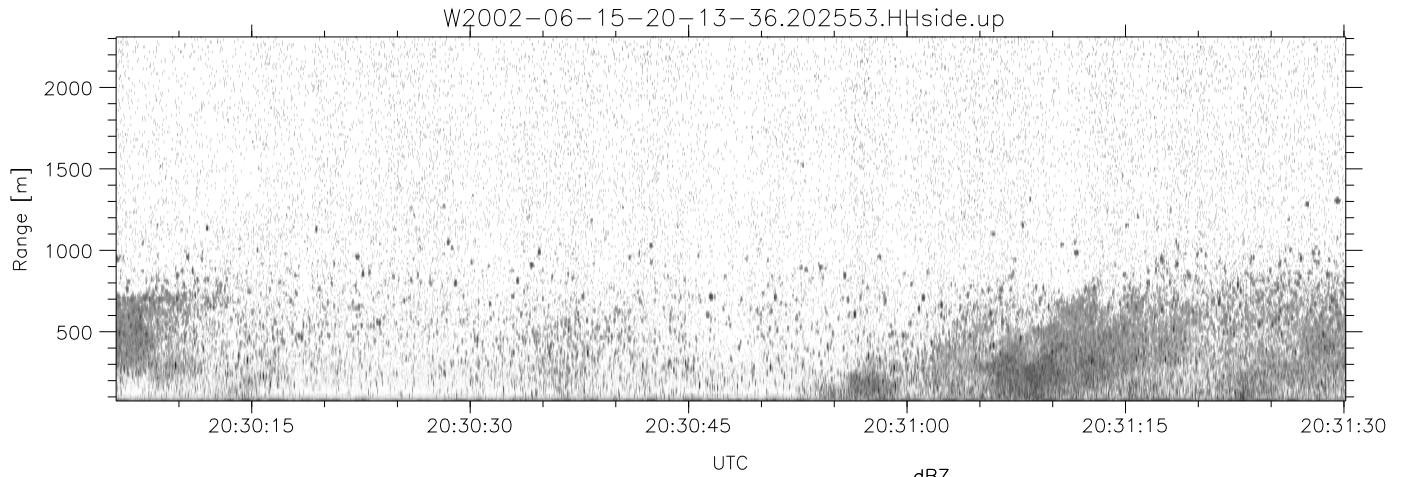


IHOP 2002 (dual-antenna config, modes 1,3,4,7) Data (cal: 49.0,50.0)

W2002-06-15-20-13-36 - SPPMAG
 IRIG:1,UTC: 20:13:29.78 to 20:53:01.25, Dur: 2372s
 TimeLngth: 2371.47s, TimeInt: 24ms (40.5pps)
 TimeCor=-13.0s, DSPDif(mn,min,mx):24,20,393
 PPS(min,max,std): 27,42,2.71
 Prof: 636 to 96735, NumProf(t/r): 96099/30122
 ProcTime/Recs: 20:25:53-20:38:16/30122-60243
 MxACQtime: 17ms; DRate: 97.0KB/s; Flags: 0, 0, 0
 Pulse: 275ns, IFfilt: 5.0MHz; ppPol: HH
 TxPol: H, PRF: 20 kHz
 Range: Delay 75m, Spacing 15m, Gates 150
 Ave. Pulses: 348, Rng/Prof Aspect@90m/s: 6.8

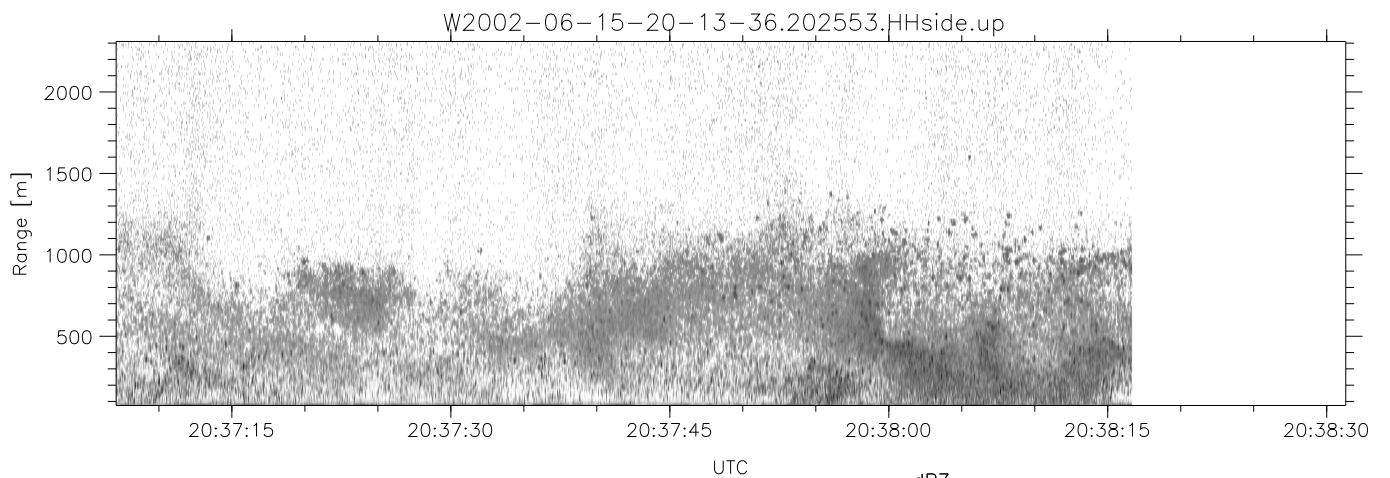
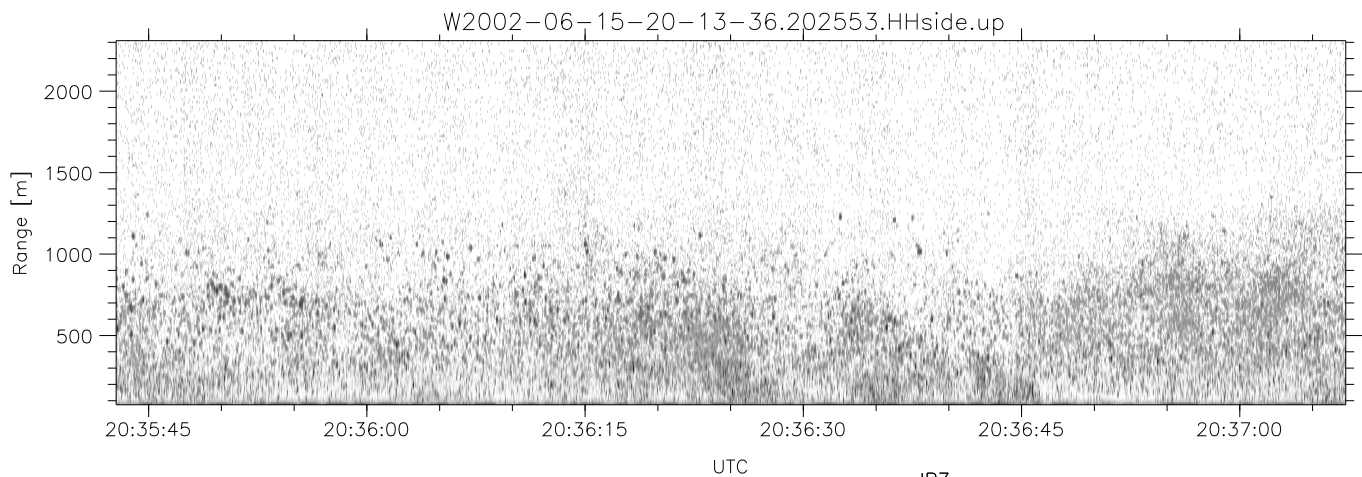
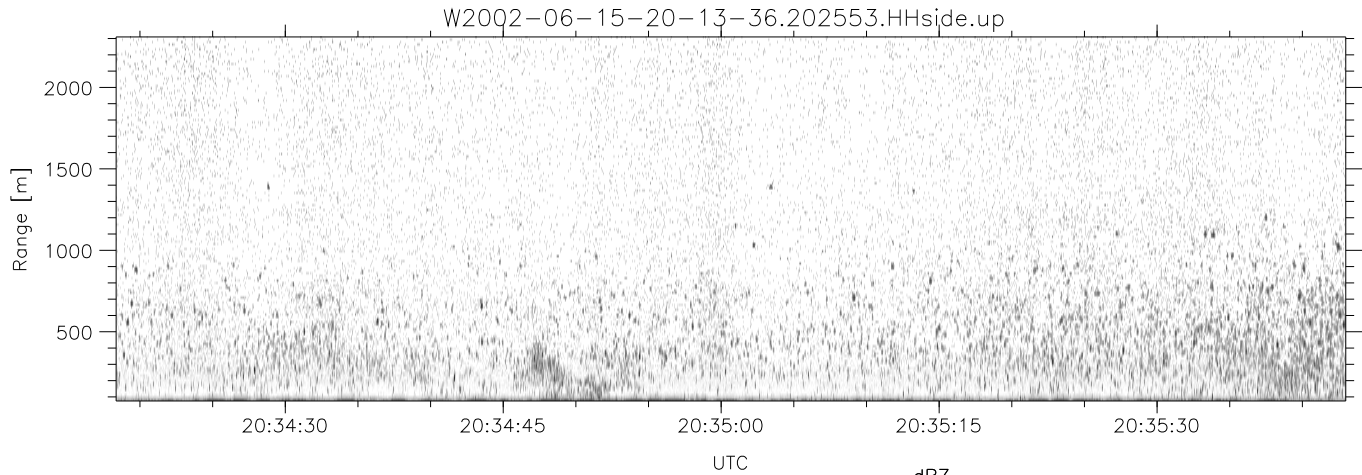
| | Min | Max | Mean | Std | Varc% |
|-----------|--------|--------|--------|--------|-------|
| hhN(dB) | -67.38 | -65.62 | -66.49 | -79.38 | 5.1 |
| vvN(dB) | -67.75 | -65.72 | -66.81 | -79.51 | 5.4 |
| hhL(dB) | -26.47 | -6.15 | -13.38 | -14.07 | 85.3 |
| vhL(dB) | -29.66 | -7.08 | -15.23 | -14.95 | 106. |
| ppN(m/s) | -15.80 | 15.80 | 0.09 | 8.99 | |
| ppT(m/s) | -0.39 | 0.11 | -0.02 | 0.03 | |
| vh/hh(dB) | -NaN | -4.86 | -19.57 | -13.81 | 376. |
| hnjmp(dB) | -1.13 | 1.00 | -0.12 | -11.73 | 6.9 |
| vnjmp(dB) | -1.35 | 1.20 | -0.14 | -11.75 | 6.9 |



IHOP 2002 (dual-antenna config, modes 1,3,4,7) Data (cal: 49.0,50.0)

W2002-06-15-20-13-36 - SPPMAG
 IRIG:1,UTC: 20:13:29.78 to 20:53:01.25, Dur: 2372s
 TimeLngth: 2371.47s, TimeInt: 24ms (40.5pps)
 TimeCor=-13.0s, DSPDif(mn,min,mx):24,20,393
 PPS(min,max,std): 27,42,2.71
 Prof: 636 to 96735, NumProf(t/r): 96099/30122
 ProcTime/Recs: 20:25:53-20:38:16/30122-60243
 MxACQtime: 17ms; DRate: 97.0KB/s; Flags: 0, 0, 0
 Pulse: 275ns, IFfilt: 5.0MHz; ppPol: HH
 TxPol: H, PRF: 20 kHz
 Range: Delay 75m, Spacing 15m, Gates 150
 Ave. Pulses: 348, Rng/Prof Aspect@90m/s: 6.8

| | Min | Max | Mean | Std | Varc% |
|------------|--------|--------|--------|--------|-------|
| hhN(dB) | -67.38 | -65.62 | -66.49 | -79.38 | 5.1 |
| vvN(dB) | -67.75 | -65.72 | -66.81 | -79.51 | 5.4 |
| hhL(dB) | -26.47 | -6.15 | -13.38 | -14.07 | 85.3 |
| vhL(dB) | -29.66 | -7.08 | -15.23 | -14.95 | 106. |
| ppN(m/s) | -15.80 | 15.80 | 0.09 | 8.99 | |
| ppT(m/s) | -0.39 | 0.11 | -0.02 | 0.03 | |
| vh/hh(dB) | -NaN | -4.86 | -19.57 | -13.81 | 376. |
| hn/jmp(dB) | -1.13 | 1.00 | -0.12 | -11.73 | 6.9 |
| vn/jmp(dB) | -1.35 | 1.20 | -0.14 | -11.75 | 6.9 |



IHOP 2002 (dual-antenna config, modes 1,3,4,7) Data (cal: 49.0,50.0)

W2002-06-15-20-13-36 - SPPMAG
 IRIG:1,UTC: 20:13:29.78 to 20:53:01.25, Dur: 2372s
 TimeLngth: 2371.47s, TimeInt: 24ms (40.5pps)
 TimeCor=-13.0s, DSPDif(mn,min,mx):24,20,393
 PPS(min,max,std): 27,42,2.71
 Prof: 636 to 96735, NumProf(t/r): 96099/30122
 ProcTime/Recs: 20:25:53-20:38:16/30122-60243
 MxACQtime: 17ms; DRate: 97.0KB/s; Flags: 0, 0, 0
 Pulse: 275ns, IFfilt: 5.0MHz; ppPol: HH
 TxPol: H, PRF: 20 kHz
 Range: Delay 75m, Spacing 15m, Gates 150
 Ave. Pulses: 348, Rng/Prof Aspect@90m/s: 6.8

| | Min | Max | Mean | Std | Varc% |
|------------|--------|--------|--------|--------|-------|
| hhN(dB) | -67.38 | -65.62 | -66.49 | -79.38 | 5.1 |
| vvN(dB) | -67.75 | -65.72 | -66.81 | -79.51 | 5.4 |
| hhL(dB) | -26.47 | -6.15 | -13.38 | -14.07 | 85.3 |
| vhL(dB) | -29.66 | -7.08 | -15.23 | -14.95 | 106. |
| ppN(m/s) | -15.80 | 15.80 | 0.09 | 8.99 | |
| ppT(m/s) | -0.39 | 0.11 | -0.02 | 0.03 | |
| vh/hh(dB) | -NaN | -4.86 | -19.57 | -13.81 | 376. |
| hn_jmp(dB) | -1.13 | 1.00 | -0.12 | -11.73 | 6.9 |
| vn_jmp(dB) | -1.35 | 1.20 | -0.14 | -11.75 | 6.9 |