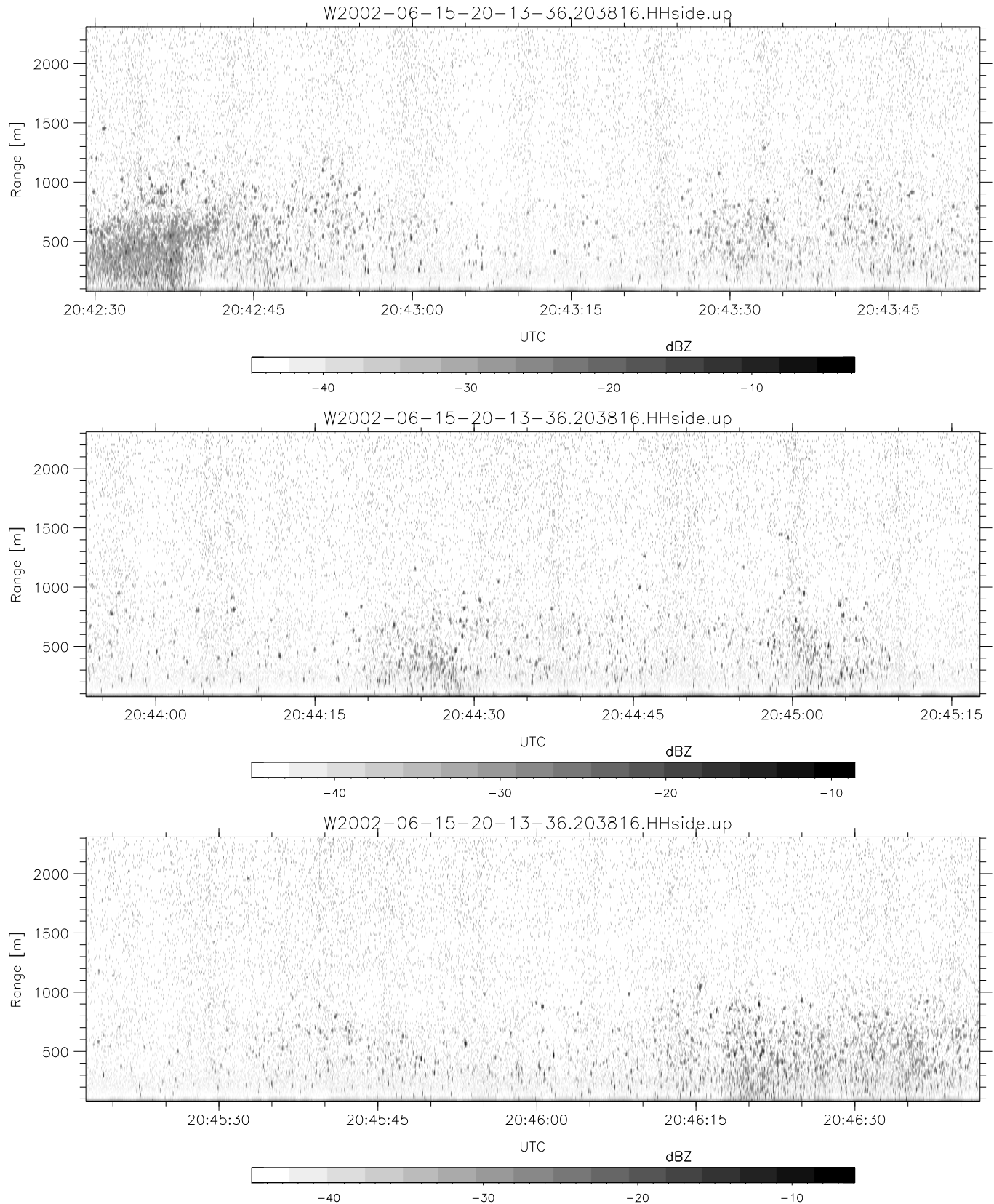


IHOP 2002 (dual-antenna config, modes 1,3,4,7) Data (cal: 49.0,50.0)

W2002-06-15-20-13-36 - SPPMAG
 IRIG:1,UTC: 20:13:29.78 to 20:53:01.25, Dur: 2372s
 TimeLngth: 2371.47s, TimeInt: 24ms (40.5pps)
 TimeCor=-13.0s, DSPDif(mn,min,mx):25,20,330
 PPS(min,max,std): 29,42,2.67
 Prof: 636 to 96735, NumProf(t/r): 96099/30122
 ProcTime/Recs: 20:38:16-20:50:39/60244-90365
 MxACQtime: 17ms; DRate: 97.0KB/s; Flags: 0, 0, 0
 Pulse: 275ns, IFfilt: 5.0MHz; ppPol: HH
 TxPol: H, PRF: 20 kHz
 Range: Delay 75m, Spacing 15m, Gates 150
 Ave. Pulses: 348, Rng/Prof Aspect@90m/s: 6.8

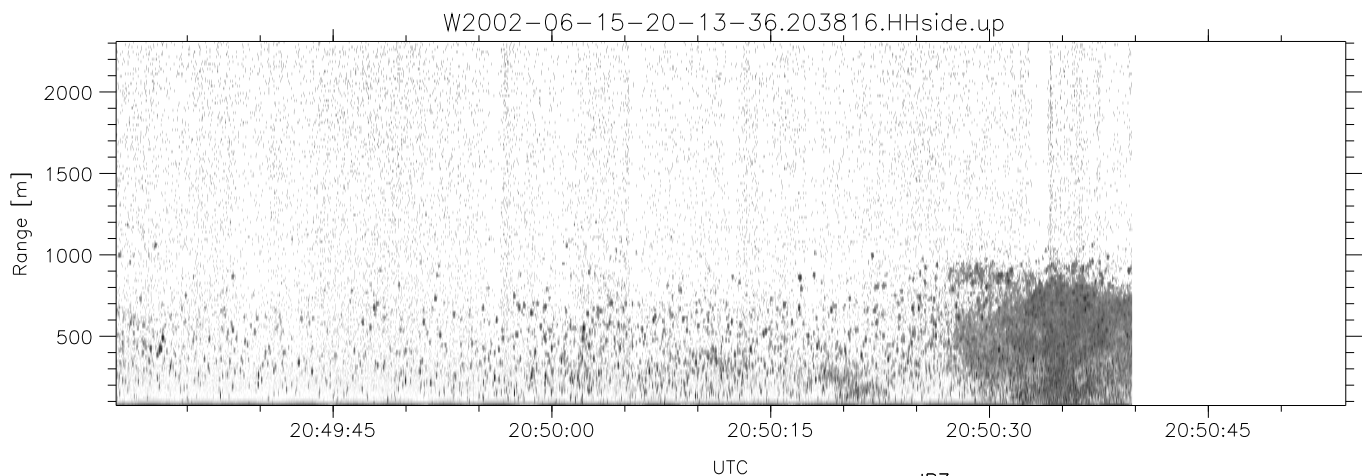
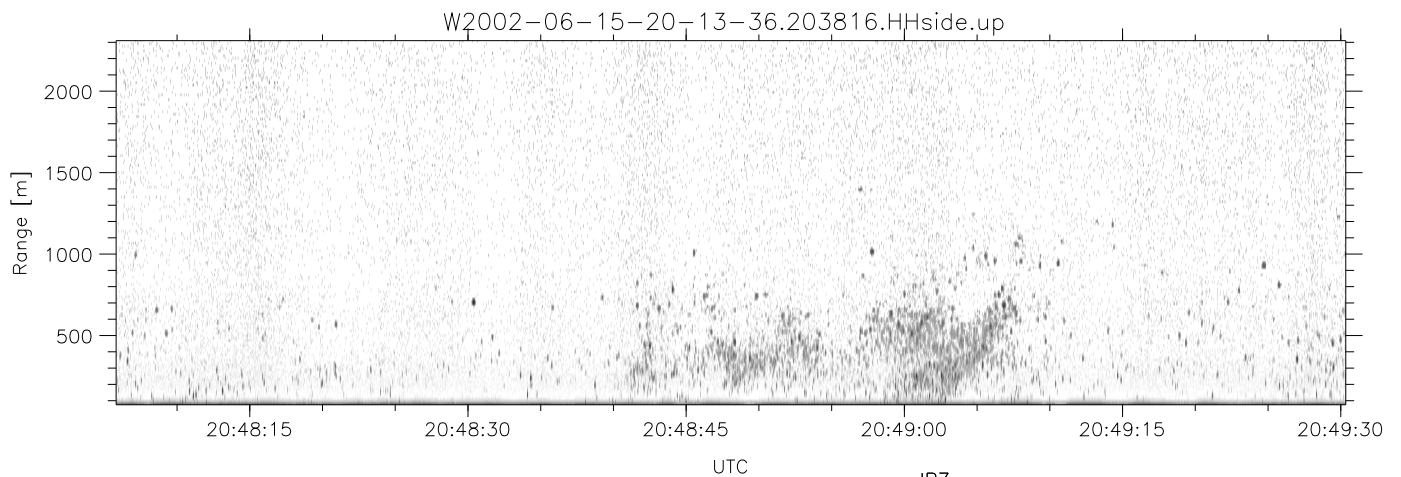
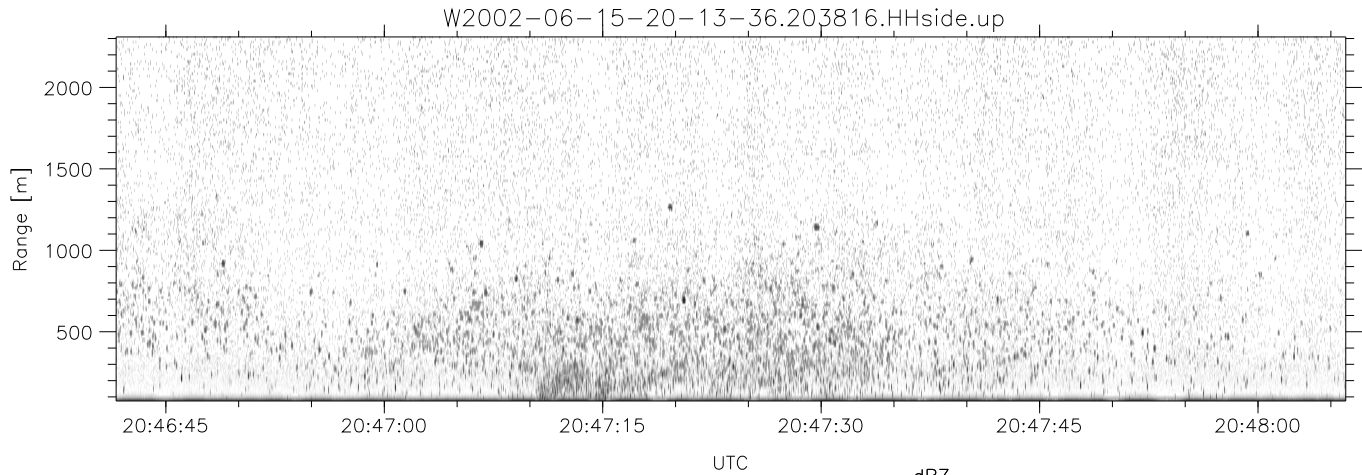
	Min	Max	Mean	Std	Varc%
hhN(dB)	-67.58	-65.59	-66.58	-79.43	5.2
vvN(dB)	-67.78	-65.78	-66.88	-79.55	5.4
hhL(dB)	-20.03	-7.10	-12.05	-14.44	57.6
vhL(dB)	-30.61	-8.71	-18.98	-18.41	114.
ppN(m/s)	-15.80	15.80	0.06	8.90	
ppT(m/s)	-0.10	0.05	-0.01	0.01	
vh/hh(dB)	-NaN	-31.29	-37.48	-38.02	88.4
hnjmp(dB)	-1.25	0.95	-0.12	-11.77	6.8
vnjmp(dB)	-1.39	1.16	-0.13	-11.71	7.0



IHOP 2002 (dual-antenna config, modes 1,3,4,7) Data (cal: 49.0,50.0)

W2002-06-15-20-13-36 - SPPMAG
 IRIG:1,UTC: 20:13:29.78 to 20:53:01.25, Dur: 2372s
 TimeLngth: 2371.47s, TimeInt: 24ms (40.5pps)
 TimeCor=-13.0s, DSPDif(mn,min,mx):25,20,330
 PPS(min,max,std): 29,42,2.67
 Prof: 636 to 96735, NumProf(t/r): 96099/30122
 ProcTime/Recs: 20:38:16-20:50:39/60244-90365
 MxACQtime: 17ms; DRate: 97.0KB/s; Flags: 0, 0, 0
 Pulse: 275ns, IFfilt: 5.0MHz; ppPol: HH
 TxPol: H, PRF: 20 kHz
 Range: Delay 75m, Spacing 15m, Gates 150
 Ave. Pulses: 348, Rng/Prof Aspect@90m/s: 6.8

	Min	Max	Mean	Std	Varc%
hhN(dB)	-67.58	-65.59	-66.58	-79.43	5.2
vvN(dB)	-67.78	-65.78	-66.88	-79.55	5.4
hhL(dB)	-20.03	-7.10	-12.05	-14.44	57.6
vhL(dB)	-30.61	-8.71	-18.98	-18.41	114.
ppN(m/s)	-15.80	15.80	0.06	8.90	
ppT(m/s)	-0.10	0.05	-0.01	0.01	
vh/hh(dB)	-NaN	-31.29	-37.48	-38.02	88.4
hnjmp(dB)	-1.25	0.95	-0.12	-11.77	6.8
vnjmp(dB)	-1.39	1.16	-0.13	-11.71	7.0



IHOP 2002 (dual-antenna config, modes 1,3,4,7) Data (cal: 49.0,50.0)

W2002-06-15-20-13-36 - SPPMAG
 IRIG:1,UTC: 20:13:29.78 to 20:53:01.25, Dur: 2372s
 TimeLngth: 2371.47s, TimeInt: 24ms (40.5pps)
 TimeCor=-13.0s, DSPDif(mn,min,mx):25,20,330
 PPS(min,max,std): 29,42,2.67
 Prof: 636 to 96735, NumProf(t/r): 96099/30122
 ProcTime/Recs: 20:38:16-20:50:39/60244-90365
 MxACQtime: 17ms; DRate: 97.0KB/s; Flags: 0, 0, 0
 Pulse: 275ns, IFfilt: 5.0MHz; ppPol: HH
 TxPol: H, PRF: 20 kHz
 Range: Delay 75m, Spacing 15m, Gates 150
 Ave. Pulses: 348, Rng/Prof Aspect@90m/s: 6.8

	Min	Max	Mean	Std	Varc%
hhN (dB)	-67.58	-65.59	-66.58	-79.43	5.2
vvN (dB)	-67.78	-65.78	-66.88	-79.55	5.4
hhL (dB)	-20.03	-7.10	-12.05	-14.44	57.6
vhL (dB)	-30.61	-8.71	-18.98	-18.41	114.
ppN (m/s)	-15.80	15.80	0.06	8.90	
ppT (m/s)	-0.10	0.05	-0.01	0.01	
vh/hh (dB)	-NaN	-31.29	-37.48	-38.02	88.4
hn_jmp (dB)	-1.25	0.95	-0.12	-11.77	6.8
vn_jmp (dB)	-1.39	1.16	-0.13	-11.71	7.0