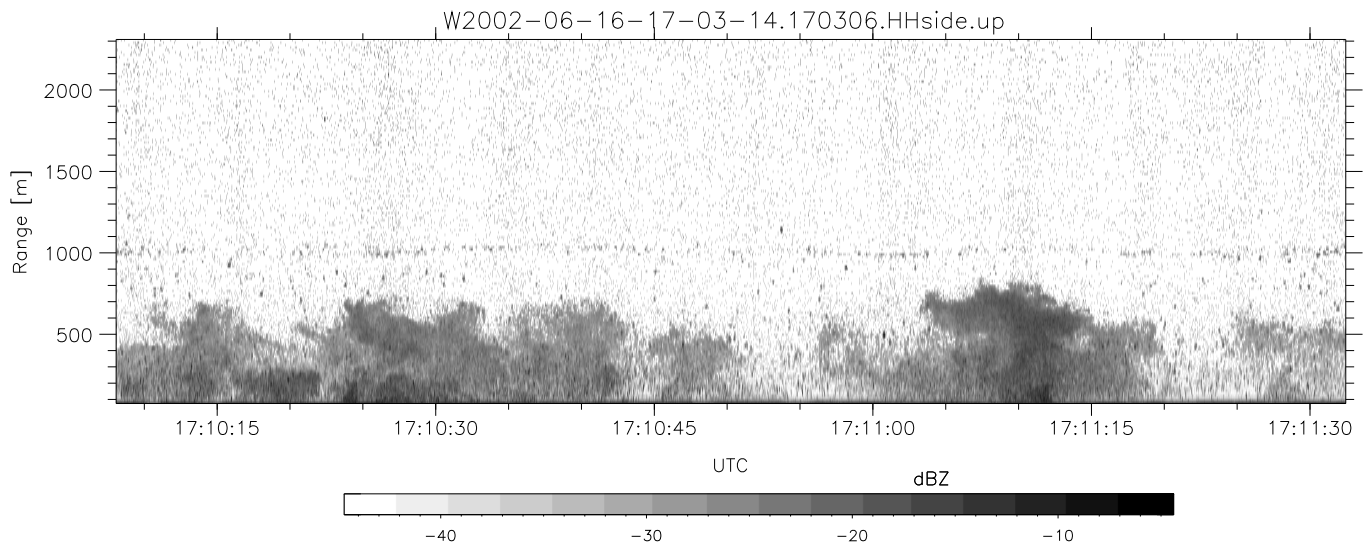
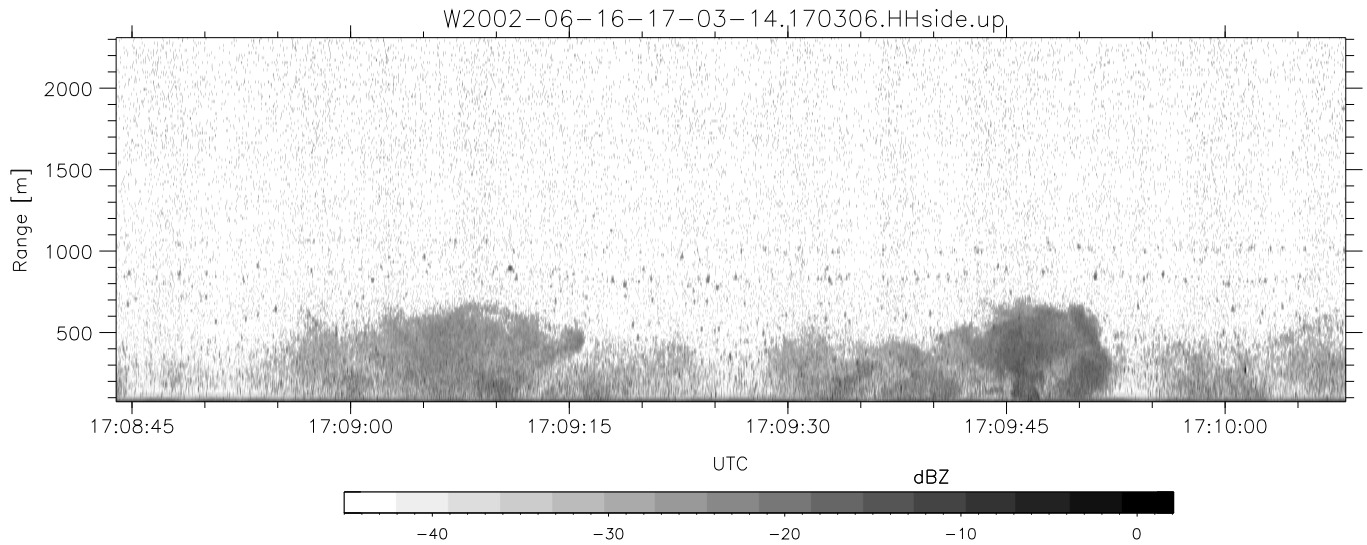
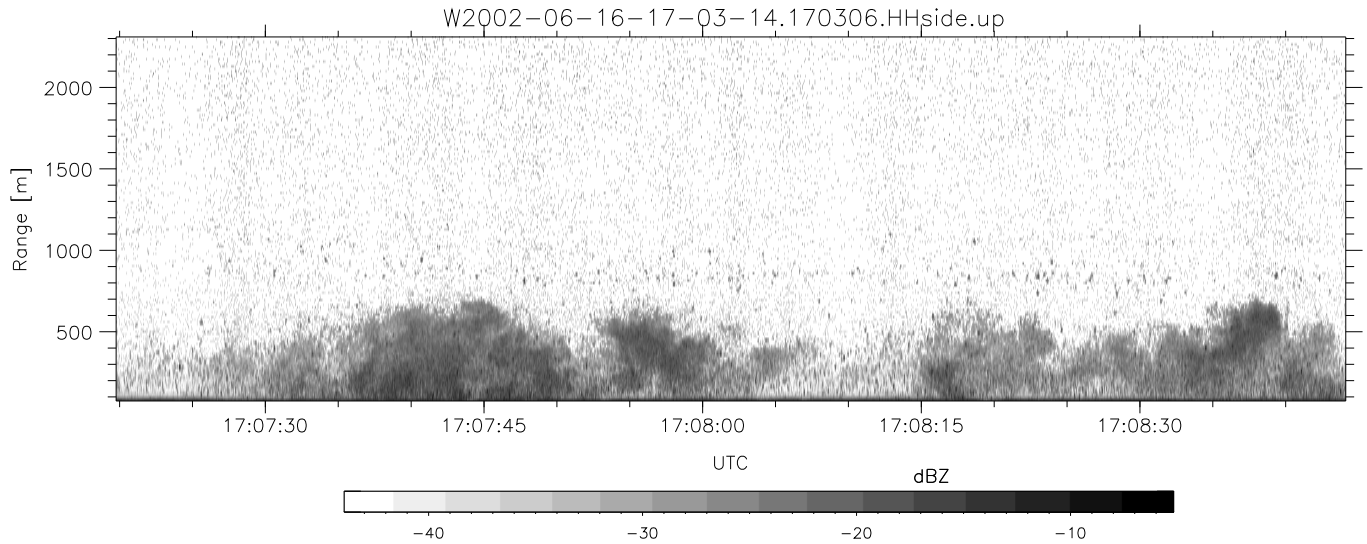


IHOP 2002 (dual-antenna config, modes 1,3,4,7) Data (cal: 49.0,50.0)

W2002-06-16-17-03-14 - SPPMAG
 IRIG:1,UTC: 17:03:06.65 to 17:21:13.96, Dur: 1087s
 TimeLngth: 1087.31s, TimeInt: 24ms (41.0pps)
 TimeCor=-13.0s, DSPDif(mn,min,mx):27,-974,3027
 PPS(min,max,std): 0,168,14.05
 Prof: 485 to 45093, NumProf(t/r): 44608/30875
 ProcTime/Recs: 17:03:06-17:15:39/0-30874
 MxACQtime: 17ms; DRate: 98.2KB/s; Flags: 0, 0, 0
 Pulse: 275ns, IFfilt: 5.0MHz; ppPol: HH
 TxPol: H, PRF: 20 kHz
 Range: Delay 75m, Spacing 15m, Gates 150
 Ave. Pulses: 348, Rng/Prof Aspect@90m/s: 6.8

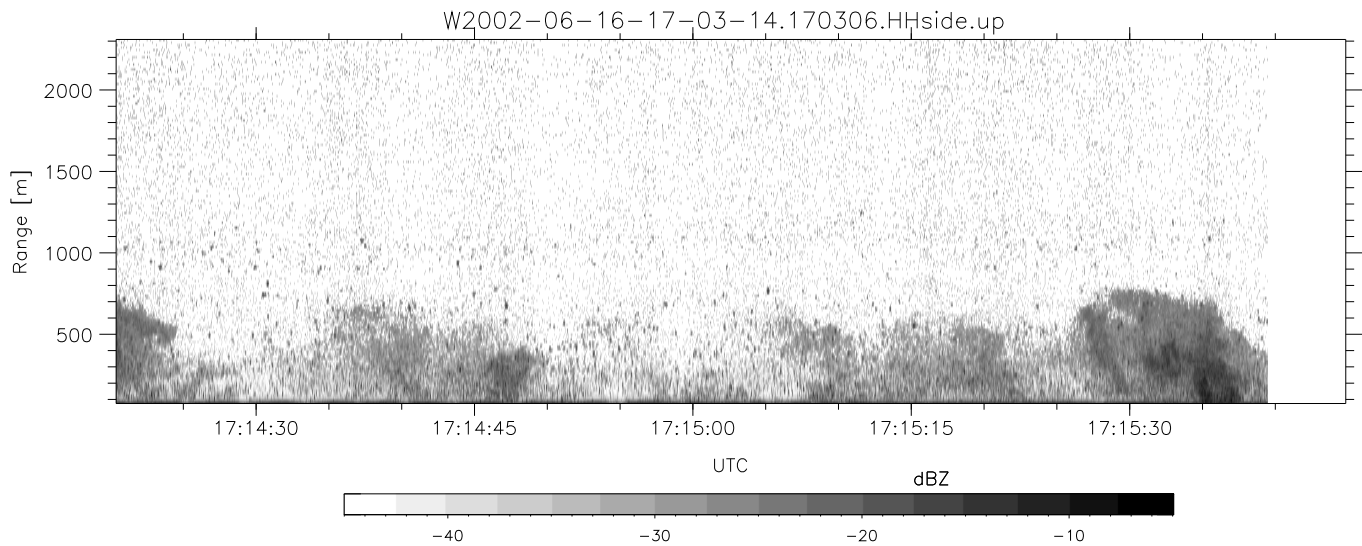
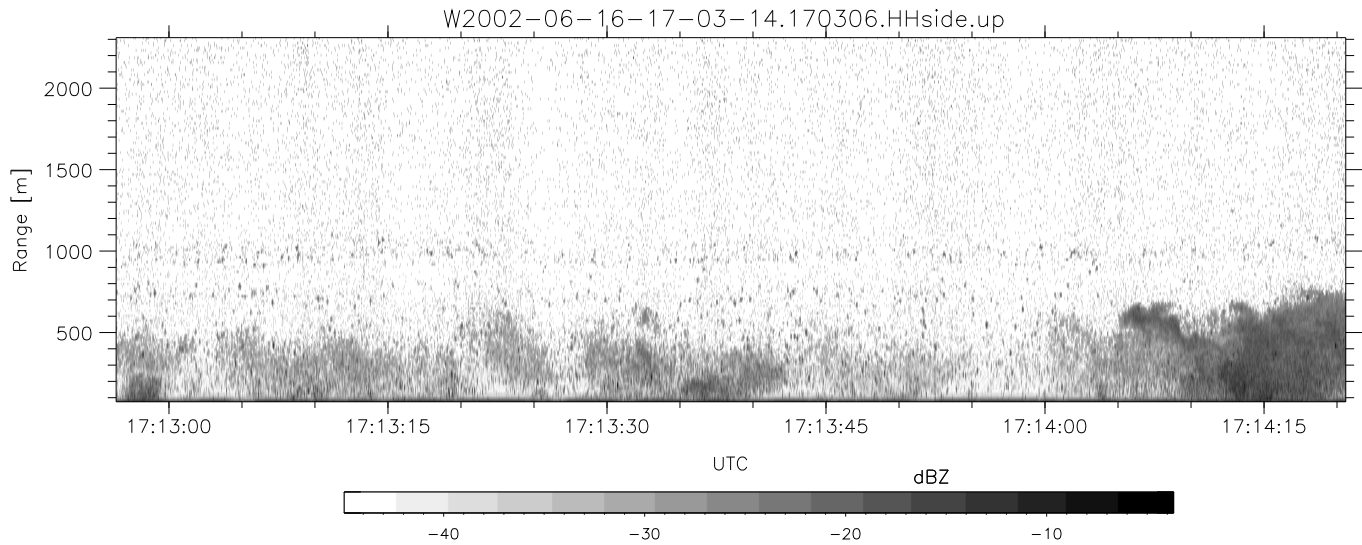
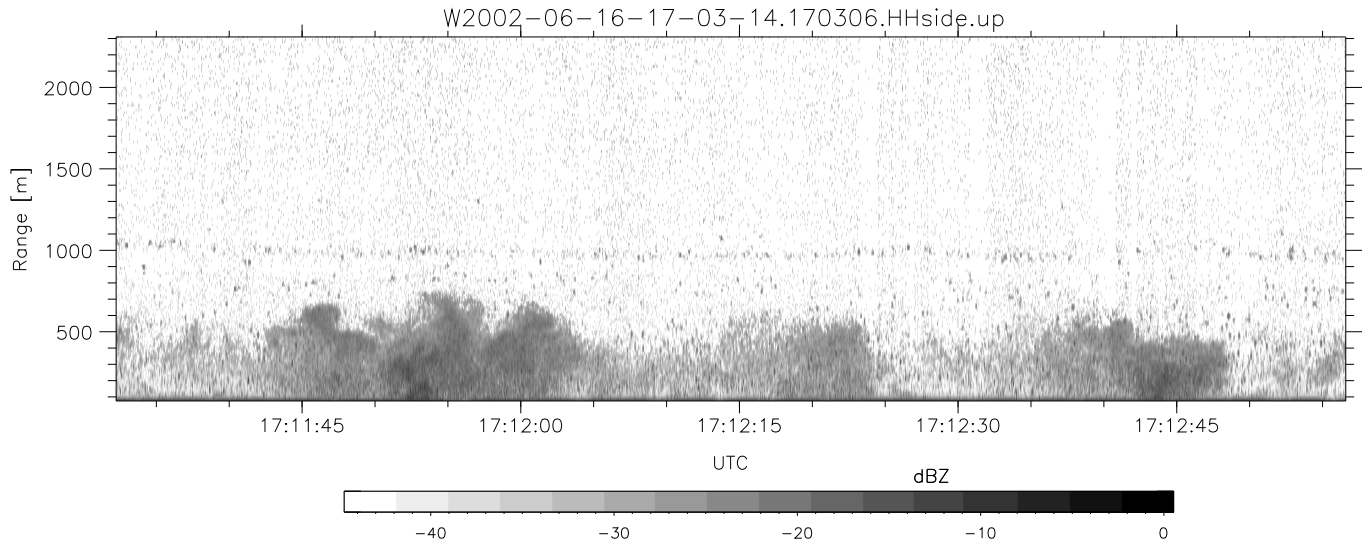
	Min	Max	Mean	Std	Varc%
hhN(dB)	-66.51	-64.82	-65.68	-78.60	5.1
vvN(dB)	-66.87	-64.91	-65.99	-78.83	5.2
hhL(dB)	-13.74	-1.56	-3.45	-8.38	32.1
vhL(dB)	-24.72	-3.52	-5.95	-10.06	38.8
ppN(m/s)	-15.80	15.80	0.11	9.04	
ppT(m/s)	-0.04	0.02	-0.00	0.01	
vh/hh(dB)	-NaN	-1.87	-17.82	-11.18	461.
hnjmp(dB)	-1.01	1.21	0.15	-11.59	6.7
vnjmp(dB)	-0.95	1.19	0.13	-11.53	6.8



IHOP 2002 (dual-antenna config, modes 1,3,4,7) Data (cal: 49.0,50.0)

W2002-06-16-17-03-14 - SPPMAG
 IRIG:1,UTC: 17:03:06.65 to 17:21:13.96, Dur: 1087s
 TimeLngth: 1087.31s, TimeInt: 24ms (41.0pps)
 TimeCor=-13.0s, DSPDif(mn,min,mx):27,-974,3027
 PPS(min,max,std): 0,168,14.05
 Prof: 485 to 45093, NumProf(t/r): 44608/30875
 ProcTime/Recs: 17:03:06-17:15:39/0-30874
 MxACQtime: 17ms; DRate: 98.2KB/s; Flags: 0, 0, 0
 Pulse: 275ns, IFfilt: 5.0MHz; ppPol: HH
 TxPol: H, PRF: 20 kHz
 Range: Delay 75m, Spacing 15m, Gates 150
 Ave. Pulses: 348, Rng/Prof Aspect@90m/s: 6.8

	Min	Max	Mean	Std	Varc%
hhN(dB)	-66.51	-64.82	-65.68	-78.60	5.1
vvN(dB)	-66.87	-64.91	-65.99	-78.83	5.2
hhL(dB)	-13.74	-1.56	-3.45	-8.38	32.1
vhL(dB)	-24.72	-3.52	-5.95	-10.06	38.8
ppN(m/s)	-15.80	15.80	0.11	9.04	
ppT(m/s)	-0.04	0.02	-0.00	0.01	
vh/hh(dB)	-NaN	-1.87	-17.82	-11.18	461.
hnjmp(dB)	-1.01	1.21	0.15	-11.59	6.7
vnjmp(dB)	-0.95	1.19	0.13	-11.53	6.8



IHOP 2002 (dual-antenna config, modes 1,3,4,7) Data (cal: 49.0,50.0)

W2002-06-16-17-03-14 - SPPMAG
 IRIG:1,UTC: 17:03:06.65 to 17:21:13.96, Dur: 1087s
 TimeLngth: 1087.31s, TimeInt: 24ms (41.0pps)
 TimeCor=-13.0s, DSPDif(mn,min,mx):27,-974,3027
 PPS(min,max,std): 0,168,14.05
 Prof: 485 to 45093, NumProf(t/r): 44608/30875
 ProcTime/Recs: 17:03:06-17:15:39/0-30874
 MxACQtime: 17ms; DRate: 98.2KB/s; Flags: 0, 0, 0
 Pulse: 275ns, IFfilt: 5.0MHz; ppPol: HH
 TxPol: H, PRF: 20 kHz
 Range: Delay 75m, Spacing 15m, Gates 150
 Ave. Pulses: 348, Rng/Prof Aspect@90m/s: 6.8

	Min	Max	Mean	Std	Varc%
hhN(dB)	-66.51	-64.82	-65.68	-78.60	5.1
vvN(dB)	-66.87	-64.91	-65.99	-78.83	5.2
hhL(dB)	-13.74	-1.56	-3.45	-8.38	32.1
vhL(dB)	-24.72	-3.52	-5.95	-10.06	38.8
ppN(m/s)	-15.80	15.80	0.11	9.04	
ppT(m/s)	-0.04	0.02	-0.00	0.01	
vh/hh(dB)	-NaN	-1.87	-17.82	-11.18	461.
hnjmp(dB)	-1.01	1.21	0.15	-11.59	6.7
vnjmp(dB)	-0.95	1.19	0.13	-11.53	6.8